



SAFE lux

office@ourSAFEhouse.io

Index

03 Who we are

04 Benefits

06 Furnished Modules

13 Design with us

18 Internal Finishings

27 Contact Info



Who we are

SAFElux is an innovative corporate extension of SAFEhouse, designed to provide customized off-grid, sustainable highly innovative and engineered prefabricated and modular building systems that integrate the best of cutting edge proprietary manufacturing and process with NetZero net carbon capable buildings as well as hardened structures capable withstanding any hurricane fires or natural disaster.

A modern, multi-story building with large glass windows and balconies. The balconies and the building's facade are covered in lush green plants, creating a vertical garden effect. The building is set against a clear sky, and there are trees and bushes in the foreground.

Sustainable Products Information

BENEFITS

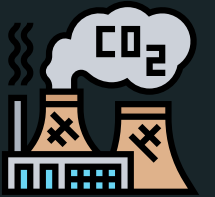
BENEFITS



**Saves >45% on
mains water**



**Reduce >45% on
sewage emission**



**Reduce carbon foot
print**



**Save money on
water and energy
bills**



**Recycled water is clean,
clear, safe & certified,
and complied with
internacional standards**



**No filters,
membranes or
chemicals**



**Fully automatic,
self cleaning, low
maintenance**



**No compromise on
hygiene and living
comfort**



**Be a part of leading
edge sustainable
living**



FURNISHED MODULES

SAFElux integrates renewable energy, water recycling systems, solar-powered infrastructure, and rapid modular units from 200 sqft tiny homes to multi story 2000 sqft projects.

The sky is the limit.

**SafeLux
Empowering
Buildings**

Single and two story available

\$TBD



ourSAFEhouse.io
SAFElux
office@ourSAFEhouse.io

For More



Single and two story available

Starting at \$148 a sqft

For More



ourSAFEhouse.io
SAFElux
office@ourSAFEhouse.io



200-1000 sqft floor plans available

Single and two story available

\$TBD



ourSAFEhouse.io
SAFElux
office@ourSAFEhouse.io

For More



Single and two story available

\$TBD



ourSAFEhouse.io
SAFElux
office@ourSAFEhouse.io

For More



Connect many to scale to your needs

Single and two story available

\$TBD



ourSAFEhouse.io
SAFElux
office@ourSAFEhouse.io

For More



Single and two story available

\$TBD



ourSAFEhouse.io
SAFElux
office@ourSAFEhouse.io

For More

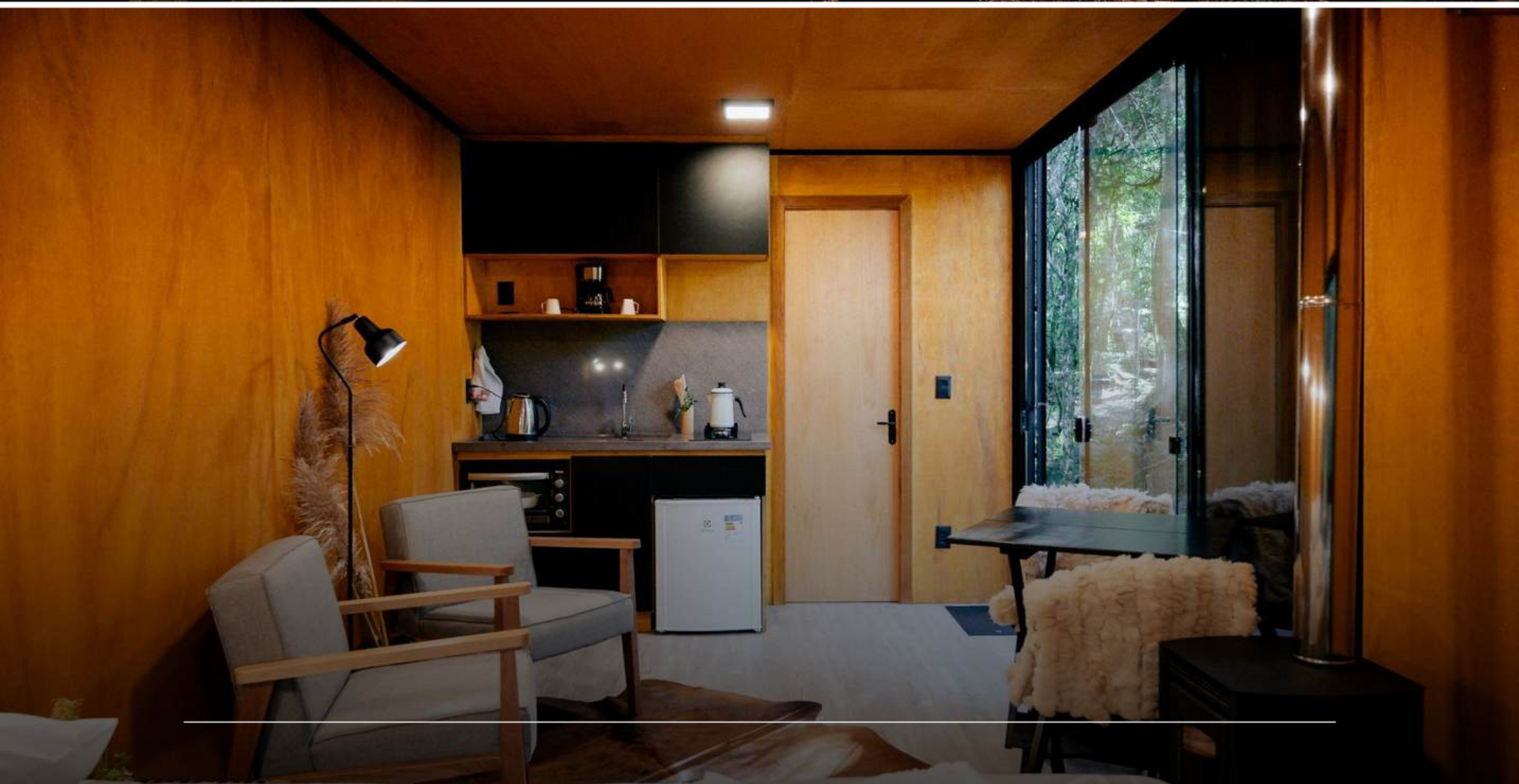
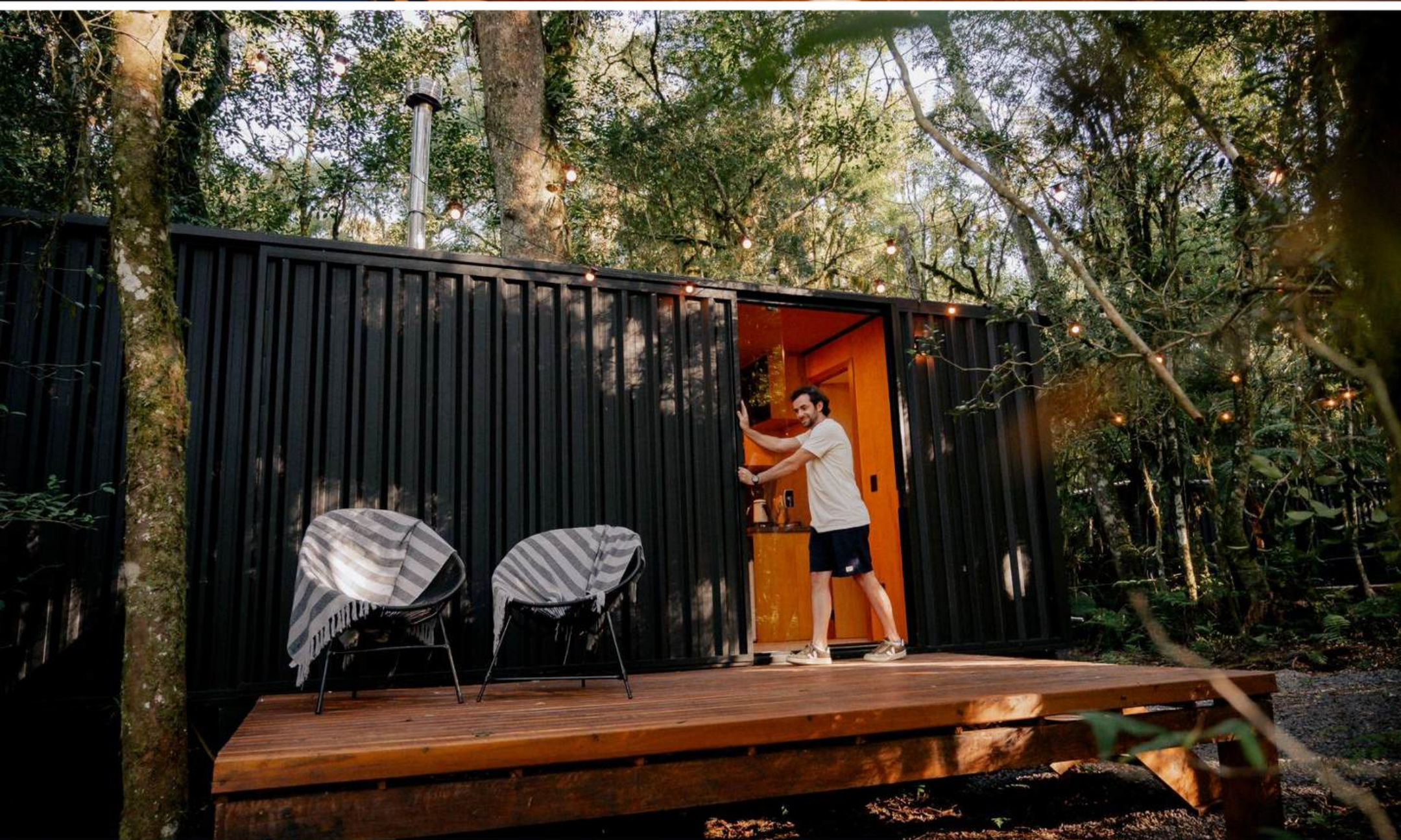


First Floor Plan

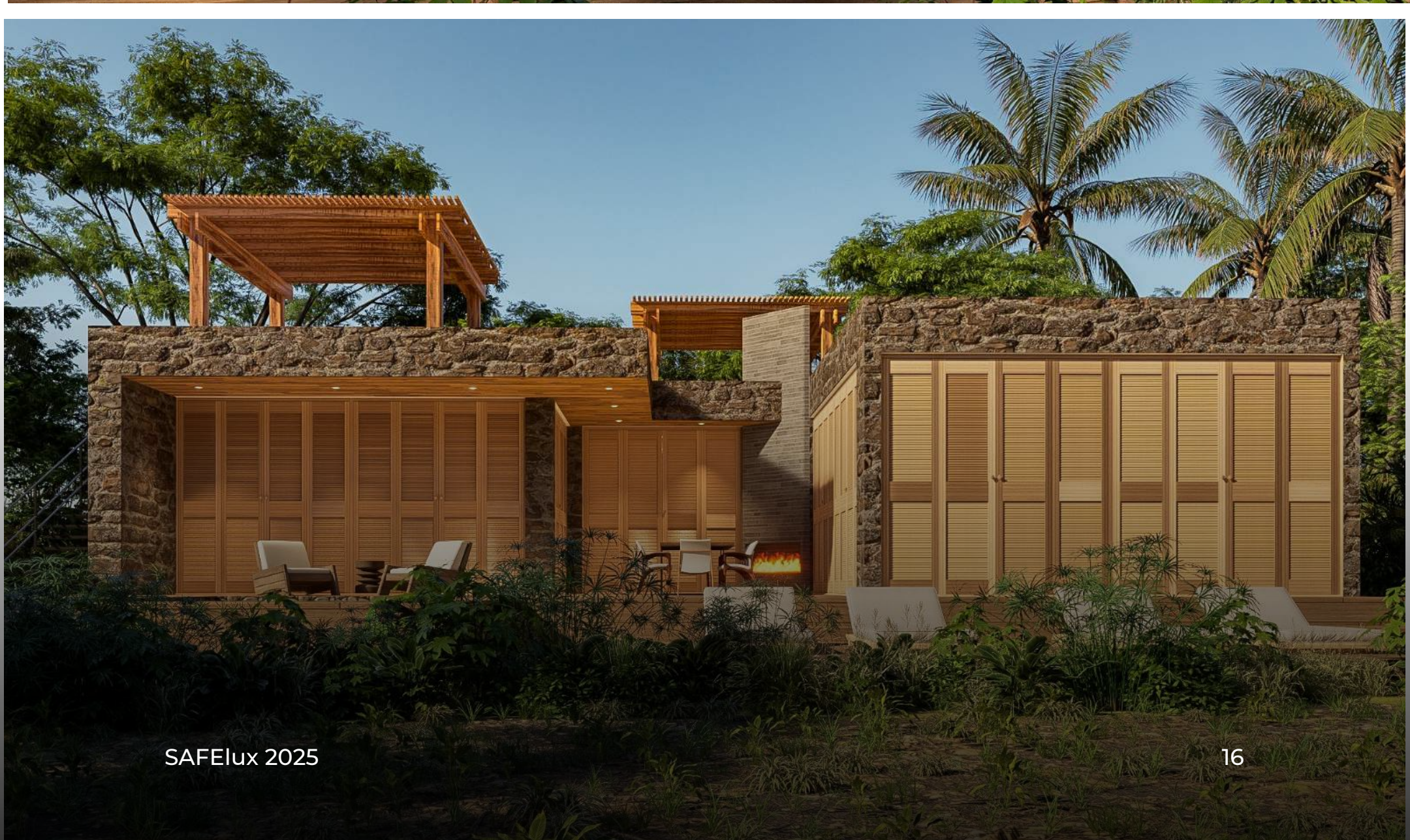


Ground Floor Plan

**Design
with us**



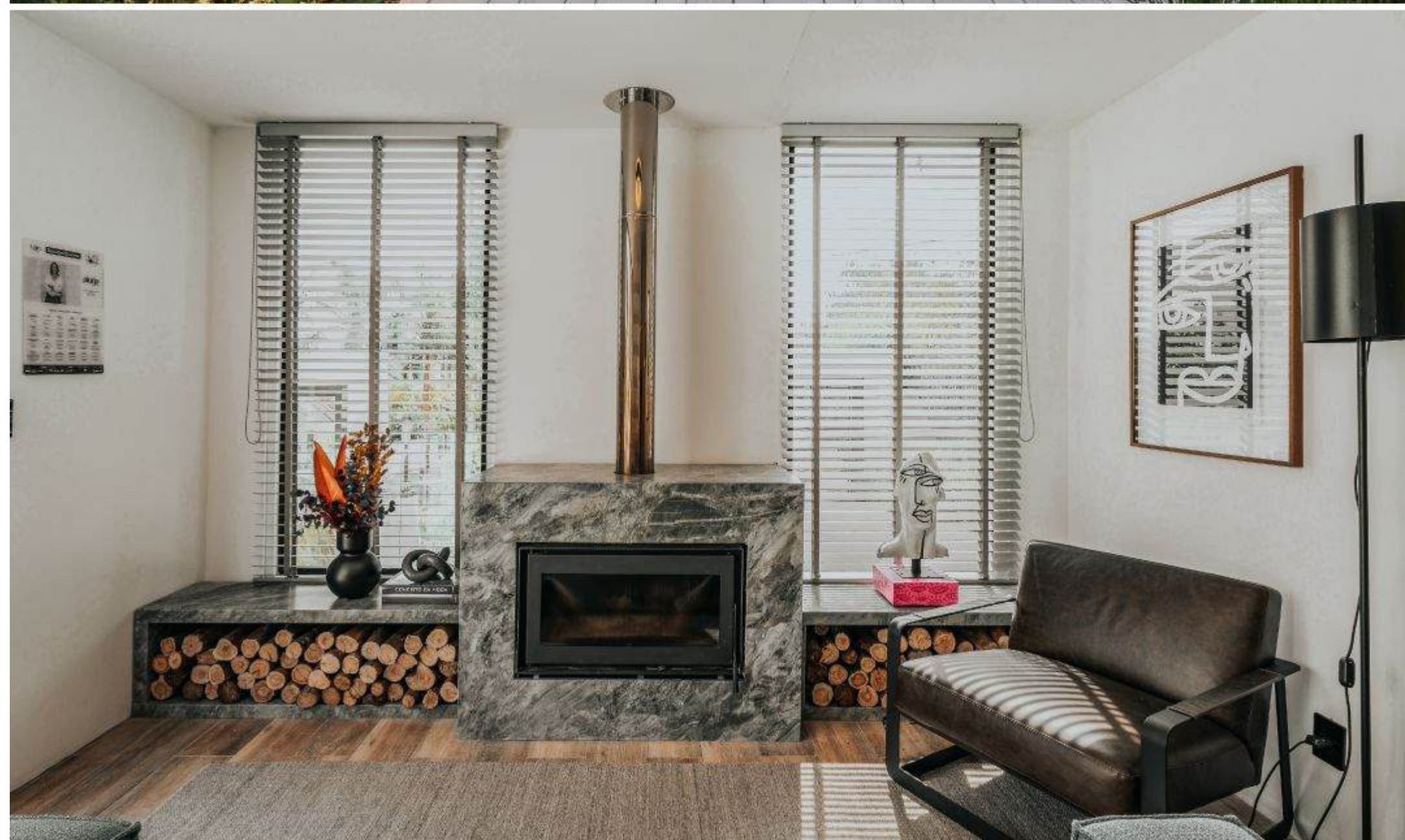








INTERNAL FINISHINGS



CLADDING

And Exterior Finishes



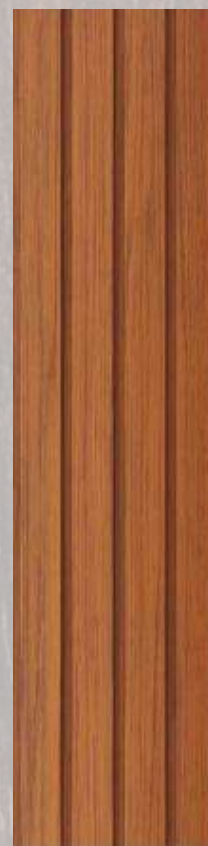
OAK



HONEY OAK



WINCHESTER OAK



GOLDEN OAK



WALNUT

The background of the image is a close-up, vertical view of a wooden floor. It features several vertical wooden planks of varying widths and shades of brown, from light tan to dark, weathered grey. The wood grain is prominent, showing natural textures, knots, and some minor damage or wear. Two small, light-colored screws are visible, one near the top center and one near the bottom center, securing the planks. The lighting is even, highlighting the natural variations in the wood.

FLOORING



LIGHT GREY



OAK GREY



**CASUAL CLASSIC
CHERRY**



BROWN



OAK SILVER



CASUAL MAPLE



OAK NATURE



OAK SILVER



KITCHEN & COUNTERTOP



SILESTONE AMAZON



SILESTONE ARIEL



SILESTONE BAMBOO



SILESTONE BEIGE DAPHNE



SILESTONE BLANCO CAPRI



SILESTONE BLANCO CITY



**TENERIFE QUARTZ BLACK
NIGHT PLACA X**



**TENERIFE QUARTZ
GREYSHELL PLACA X**



QUARTZ ABSOLUTE BLACK



QUARTZ ABSOLUTE WHITE



QUARTZ ARTIC WHITE



QUARTZ BIANCO GIOIA



QUARTZ BLANCO SANTORINI



QUARTZ BIANCO VENATO



QUARTZ BLACK DIAMOND



QUARTZ BLACK STAR



QUARTZ BLANCO MONTECARLO



**QUARTZ BROWN
SHADOW**

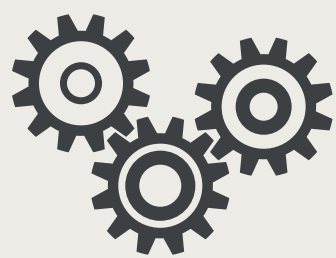


Clean Tech Off-Grid Water and Power

PRODUCTS



Our company Offers a wide range of, grid-independent, disaster- resistant, modular building systems with full suite clean tech



Steel Chassis



Advanced Greywater Recycling



Advanced Prefab Foundation



CA building code compliant



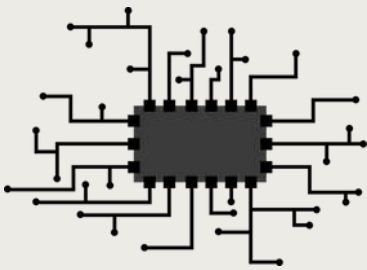
Advanced Clean Water System



Grid Independent Power System



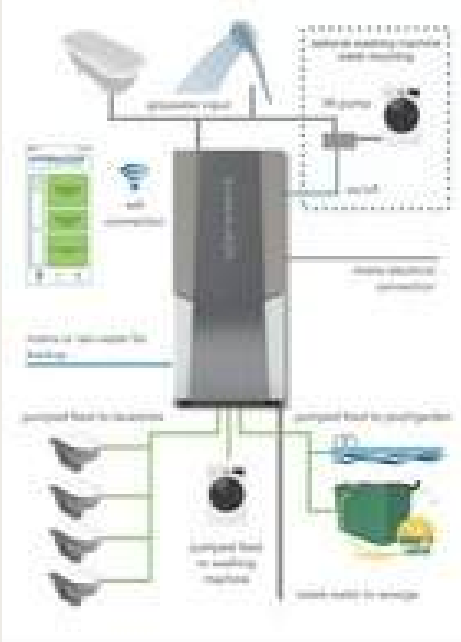
Advanced Wastewater System



Full Suite Cleantech Systems



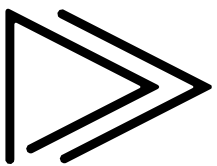
Clean Tech



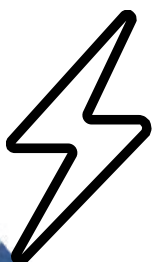
FULL SUITE OF INNOVATIVE SOLUTIONS



**BLACK WATER TREATMENT
TO AGRICULTURE**



AWARD WINNING GREY WATER SYSTEM



PATENTED SOLAR INNOVATION



**ATMOSPHERIC
WATER CREATION**



**RAIN WATER
PURIFICATION**

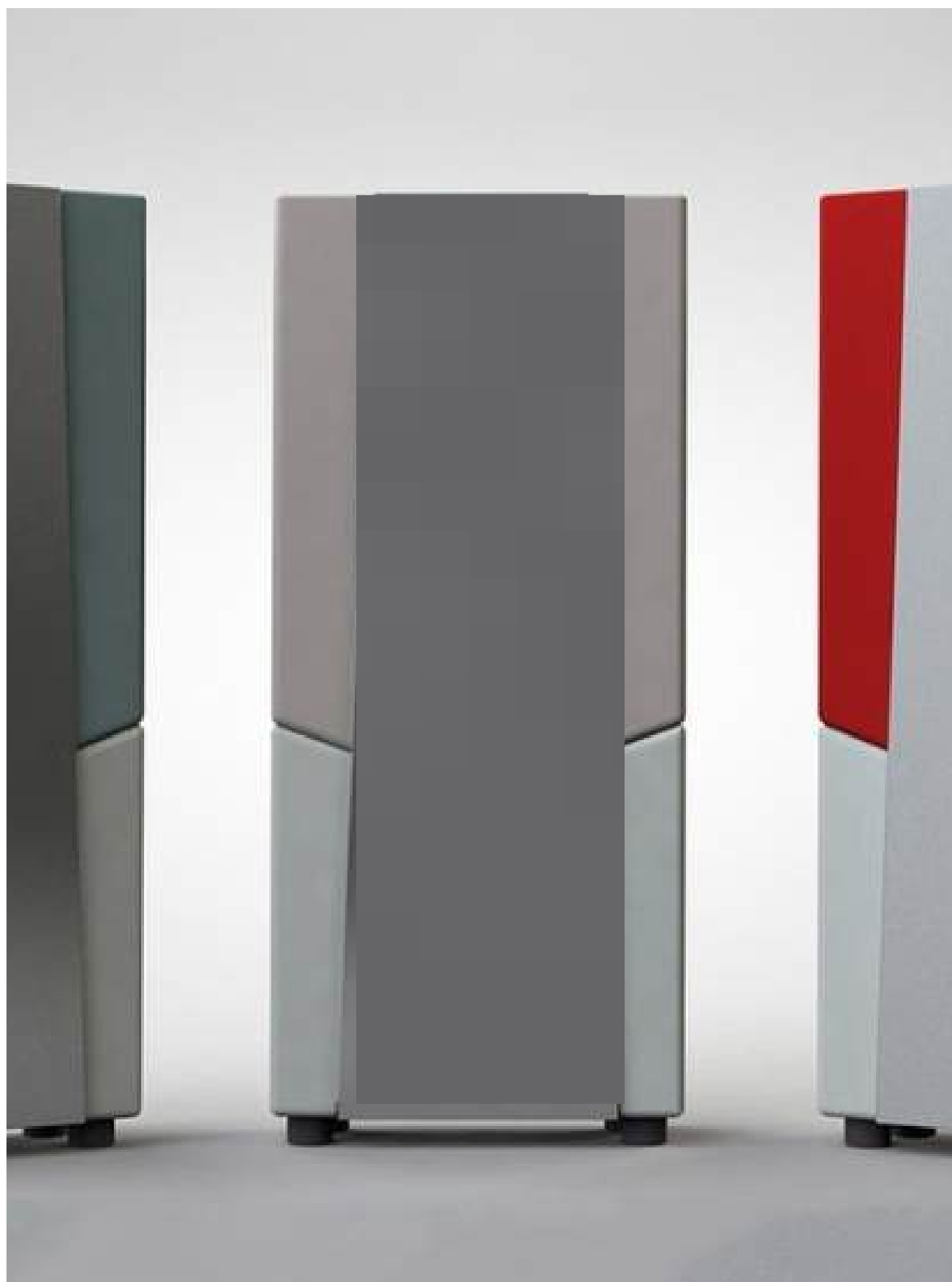


NET ZERO



SMART HOME

GREY WATER TECH



WATER RECYCLING SYSTEMS SHOULD BECOME A STANDARD ITEM IN EVERY SINGLE HOME AND BUILDING, JUST LIKE CLIMATE CONTROL, SOLAR PANELS, OR HEAT PUMPS

At CES 2020, Launched globally and had its worldwide breakthrough. Our technology partner was awarded as ‘Best of Innovation’ in the category ‘Sustainability, Eco-design, and Smart Energy’ – and also won ‘Best Start-Up’, ‘Best Sustainable Product’, and the overall award ‘Best of the Best’, beating more than 4000 competitors in different categories.

Today, We has extended its partner network over all continents. In the documentary Brave Blue World, the company is featured as one of the solutions to solve the worldwide water crisis. We are based on the Water Campus in Leeuwarden, the Netherlands and at the Global Water Center in Milwaukee, United States.

Within three years, we installed hundreds of its innovative systems in countries throughout Europe, the Middle East and Africa and gained international recognition for its sustainable approach.

FOUNDATION



The SafeHouse Foundation consists of engineered steel or aluminum rigid platforms which sit on the top of the soil itself and keeps the building level and straight regardless of soil heaving and settling due to frost or sinking.

GROUNDBREAKING PRE-FAB FOUNDATION

Our company installed the first state-approved foundation in America.

Why use this for our project?

A flat and level platform is the key to setting up modular units. This innovation provides a perfect base to rest modular buildings on and with the quick assembly the crews can build the foundation just the home being delivered. A typical modular unit foundation of 1,500 sq ft to 2,000 sq ft before can be assembled by 3 workers in one day, using simple hand tools. The frame is delivered to the site as a compact kit for easy hand assembly.



WATER FROM AIR #2



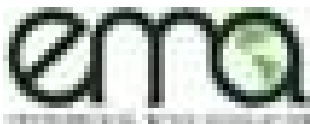
This innovation is completely off grid and self contained, creating drinking water from just sunlight and air. Using advanced water capture technology, a standard panel array replaces more than a 12-pack and up to a 20-pack of bottled water on a sunny day.

Why use this for our project?

The panels utilize solar power and a small battery to enable water production when the sun shines and water delivery on cloudy days or nights. A standard array contains two hydro panels, which hold 30 liters each in a reservoir where the water is mineralized with calcium and kept clean for optimal taste and health.

Our partner created the world’s first 100% clean energy, technologically advanced, eco-luxury line of mobile assets

Extensive Proprietary Eco-Technology
Title of Invention
Solar-Thermal Powered Mobile Asset



POWER AND HVAC



Our partner created the world's first 100% clean energy, technologically advanced, eco power innovation. We adapted it into our units.

100% Clean Power

- Maybe the most innovative technology on the market to run 100% on clean energy, provided by solar and thermal technologies. Hybrid backup generators for emergencies are approved to utilize B20 biodiesel or ultra-clean, renewable synthetic diesel, or any standard fuel if needed.

Extensive Proprietary Eco-Technology

Title of Invention

- **Solar-Thermal Powered Mobile Asset**

• **Utility under 35 USC 111(a)**

The units features the world's most advanced heating and cooling systems, commercial grade solar invertors, and ultra advanced 51V Lithium ion batteries. 24-7 remote real time monitoring and troubleshooting abilities.

TRA Certification, Inc. established an entirely new upgraded classification of environmental standards exclusively for the Ecoluxe Line called "Emerald Off Grid."

A solar-thermal powered mobile asset featuring a solar-thermal air conditioning system with a solar clean energy system to provide a R.V. having improved energy efficiency



Ultra Low VOC components and energy efficient technologies utilized throughout including HVAC, heating, lighting and water, offering a unique value proposition to the environmentally Inventor

- U. S Patent # 9,505,307 B2 Issued. All 13 Claims filed have been approved

CLEAN RAIN



Rainwater Harvesting

With a rainwater harvesting system, a family can benefit by having a sustainable source of water during part, or all, of the year.

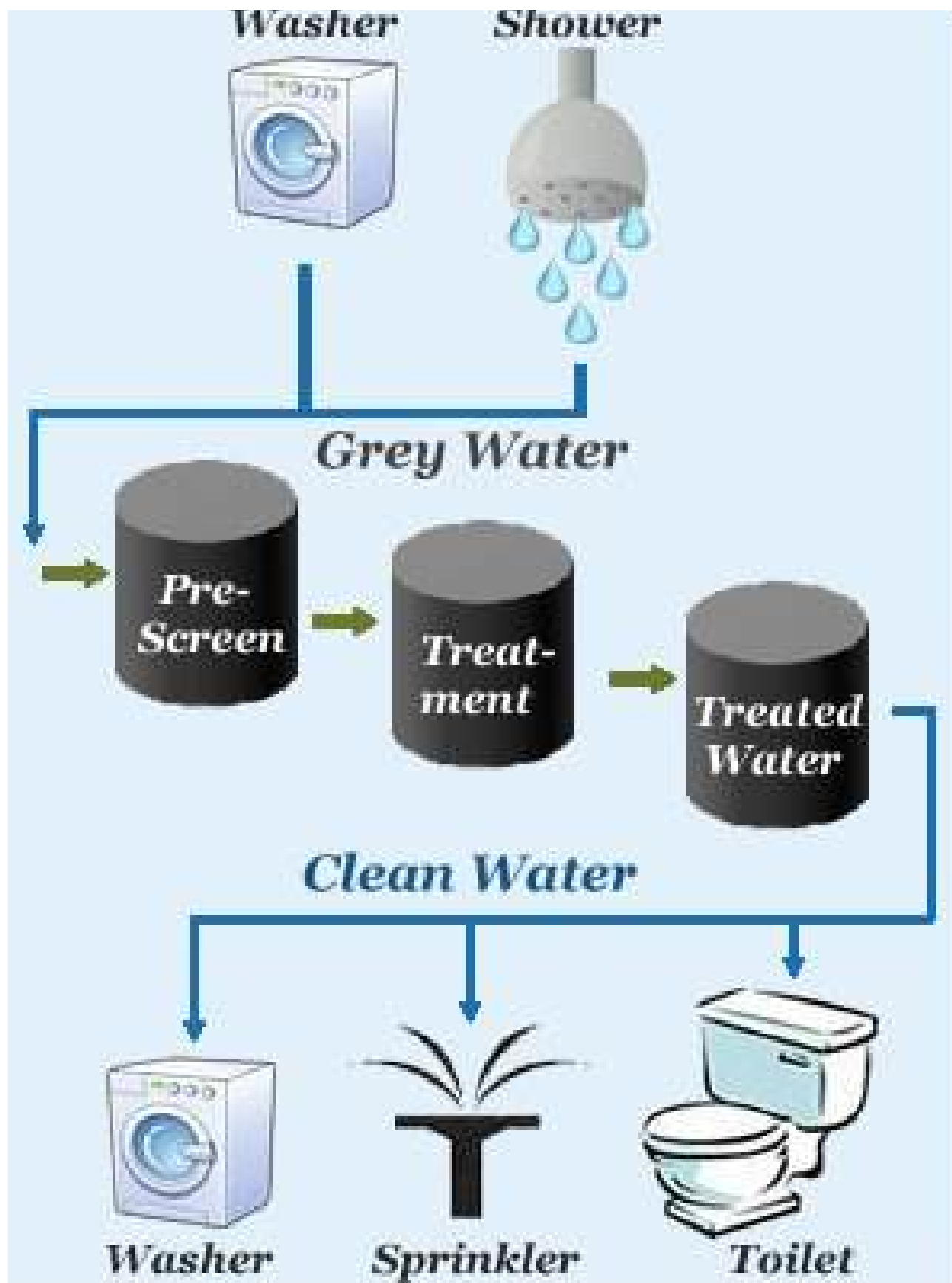
Major Need

We are dedicated to designing and installing systems to harvest the rain... particularly in communities where people lack access to water.

Looking for solutions

To achieve sustainability, we need to develop a water supply and use model that is in a healthy relationship with natural cycles and availability. We require solutions that can supply the population more equitably without destroying aquifers, rivers, or the ecosystems that depend on them. To achieve a rational, ecological and sustainable use of water, it is essential that we learn to take advantage of the largest and most accessible water resource that is currently wasted: Rain.

BLACK WATER



Specializes in wastewater treatment and recycling and manufactures compact units that produce a treated effluent that can be reused in infigation. It's packaged solutions depend on a biological process that removes organic load and nutrients, excess sludge can be composted producing organic fertilizer as a result

Instead of wasting energy and water contained in black water in a septic system, We compact wastewater treatment plants generate resources for off-grid living. A low energy blower provides the necessary oxygen to produce a high-quality effluent that does not do any harm to people or the environment, biological denitrification assures that water bodies are never affected by runoffs.

The product has a track record of more than 15 years, has been evaluated by UC Davis and more than 2000 units are sold annually in Europe, Mexico and the Caribbean mainly.





SAFElux

+1 (310) 880-1200

office@ourSAFEhouse.io

www.ourSAFEhouse.io