

Press Auto—Control Equipment **KS-2000 II**[®]



Kesai[™] KS-2000 II[®] Color Register Control System

Capability

- Available printing speed: Max 300m/s
- Working temperature: 0–40°C
- Video camera moving speed: 37mm/s

System specialties

- Multi-display mode: either full screen or half screen
- Image capture mode: automatically and manually
- System has self-study ability
- Patrolling video camera can be operated either automatically and manually.
- Width parameter setting range, suitable for more type press machine using.



 **SHAFIQ SONS**

www.shafiqsons.net

info@shafiqsons.net

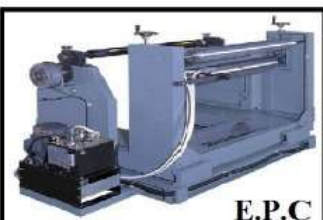
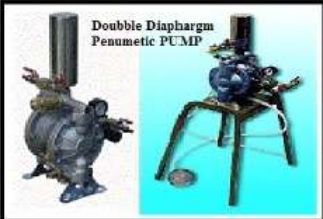
Add : 6-C, Lane 12, Nishat Commercial Area, Defence Housing Authority, Phase - 6, Karachi - PASKISTAN

Mobile : +92-300-202-1096 & +92-332-379-2201

Office : +92-21-3585-4890

Email : info@shafiqsons.net

EVERY KIND & TYPE OF SPARE PARTS

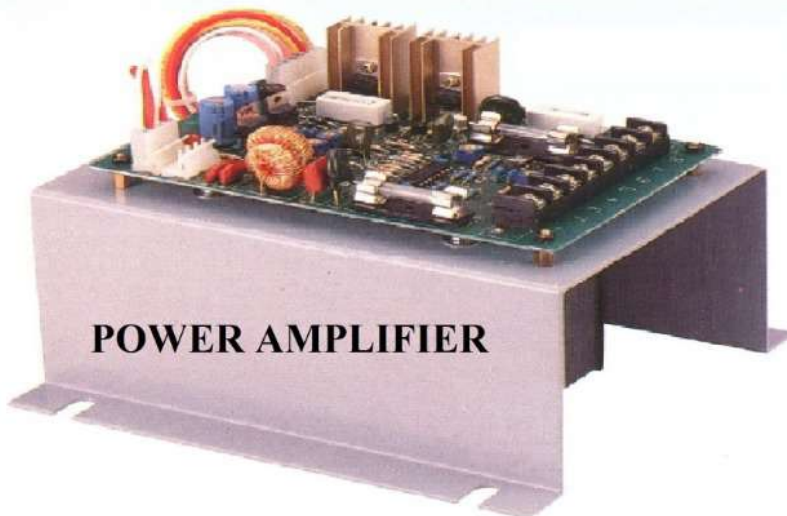


Automatic Tension Controllers



Micro-Computer Tension Controller MTC - 2000

- (1) Tension Indicator :
Indicates the present tension.
- (2) Output Meter :
Displays output voltage signal as a percentage of the maximum 10 Volts.
- (3) RUN light :
RUN Light is lit whenever automatic tension control is active.
- (4) STOP light :
STOP light comes on at stop time, when tension is several times the set operating tension.
- (5) AUTO light :
When automatic tension control has been selected, AUTO light is on.
- (6) Power Switch.
- (7) Power Indicator.
- (8) Auto/Manual Selector.
- (9) Set manual Output.
- (10) Set Auto Output.



TENSION SENSOR





**Kesai™ KS-2000 III®
Color Register Control System**

Capability

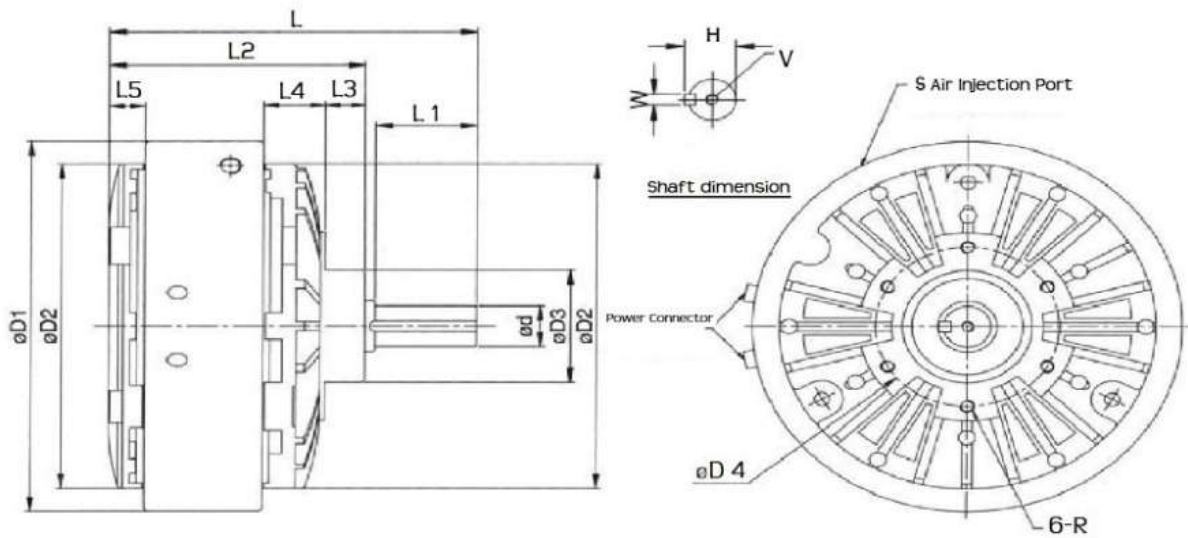
- Available printing speed: Max 300m/s
- Working temperature: 0-40°C

System specialties

- High resolution digital CCD camera, horizontal resolution up to 800 lines.
- Clear image close to the actual, high color reducibility.
- Latest electronic and image processing technology, ensure the system stabilization and credibility.
- Multi-display model, full and half screen.
- Manual and automatically picture capture, picture synchronization with the printing film.
- Camera movement with manual and motorized.
- Freely Parameter setting to match all the press machine requirement.



POWDER BRAKES

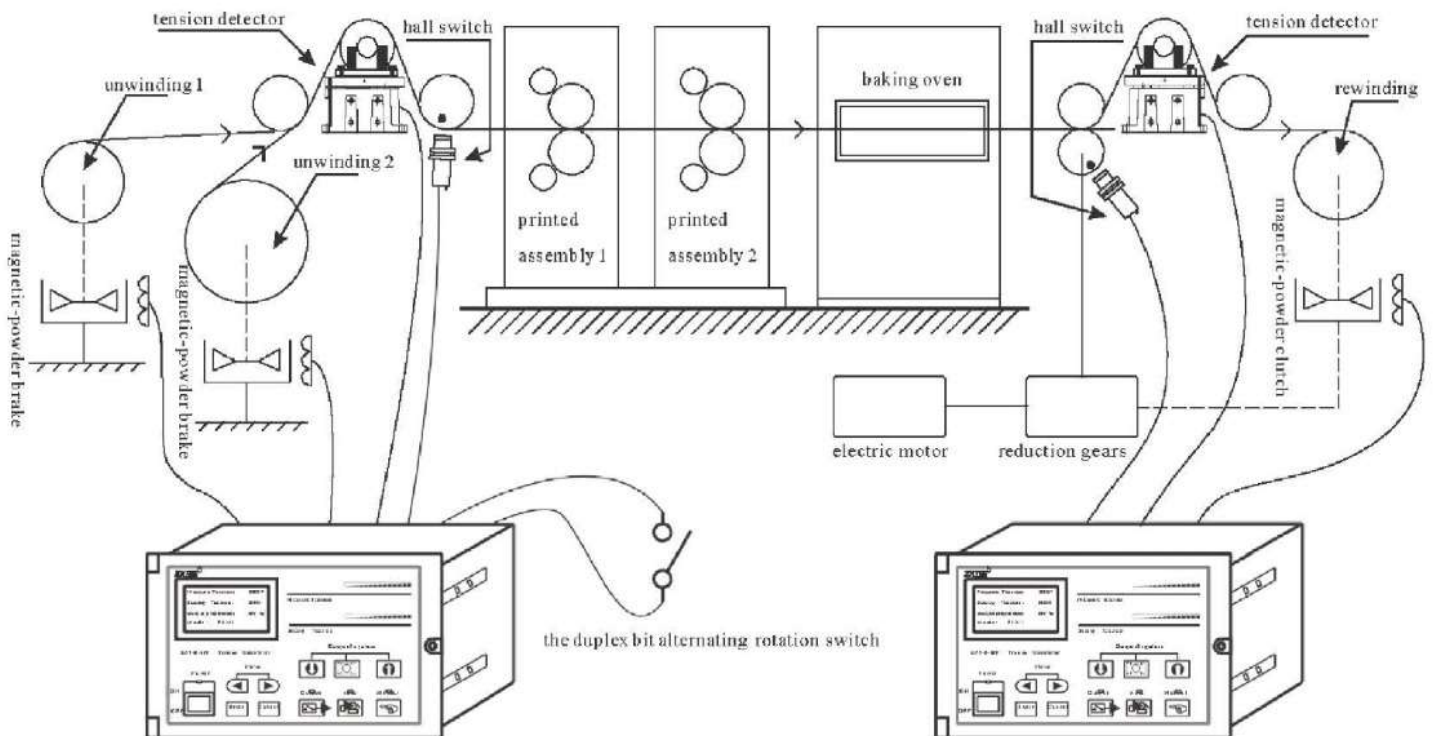


MODEL	M-B-1.2	M-B-2.5	M-B-5	M-B-10	M-B-20	M-B-40	
{ Kg-f.m } { N-m } Rated Turning Distance	1.2 (12)	2.5(25)	5(50)	10(100)	20(200)	40(400)	
Capacity DC 24 V (75°C)	{ A } Current	0.94	1.24	2.15	2.4	3.5	
	{ w } Power	22.5	30	51.5	57.6	84	
	{ s } Number of Hours Set	0.1	0.12	0.13	0.25	0.37	0.4
Moment of Inertia (KGm ²)	1.34*10 ⁻³	3.8*10 ⁻³	9.5*10 ⁻³	3.5*10 ⁻²	9.15*10 ⁻²	2.4*10 ⁻¹	
Allowable slippage rate with forced-air cooling	{ Pa } Air pressure	3*10 ⁴	5*10 ⁴	1*10 ⁵	6*10 ⁴	2*10 ⁵	
	{ m ³ /min } Air volume	0.2	0.4	0.6	1.1	2.0	
	{ W } Power	250	380	700	1100	1900	2800
Weight (kg)	5.2	9	14.5	34	53	100	
Maximum number of turns (r/min)	1800						
Weight of powder	20	33	60	140	225	370	
Exterior dimension	D1	152	182	219	278	327	395
	D2	126	160	196	260	301	365
	D3 (g7)	42	55	74	100	110	130
	D4	64	78	100	140	150	200
	L	132	155	193	239	278	338
	L1	29	43	55	65	69	92
	L2	98	108	132	167	199	234
	L3	15	17	30	28	30	35
	L4	25.5	26	28	46	56	70
	L5	14.5	15	18	21.5	32	40
	d (h7)	15	20	25	30	35	45
	H (+0 -0.2)	17	22	28	33	38.5	48.5
	W(p7)	5		7		10	12
	V	M4*0.7P*8L	M5*0.8P*10L	M6*1P*12L	M10*1.5P*20L		
R	M6*1P*10L			6-M10*1.5P*15L		8-M10*1.5P*15L	
S	1/8		1/4		3/8		

Automatic Tension Controllers



Call : +92 (0) 300 202 1096
+92 (0) 332 379 2201



the diagrammatic sketch of typical constant tension working

Microprocessor Based

STROBOSCOPE

Keyboard Operating, Wide Range, High Accuracy

IDEAL FOR INSPECTION OF FAST MOVING OBJECTS

SPECIALLY PRINTING, SLITTING, RE-WINDING FILLING & PACKING PROCESS

APPLICATION

Stroboscope / Tachometer that is ideal for inspecting and measuring the speed of moving objects and virtually all processing equipment used in general industrial maintenance, production, quality control, laboratories and as well as for school and colleges for demonstrating strobe action.

SPECIFICATION



Model	DS-3200	DS-2200	DS-1000
Setup Range	60.0 - 30,000 rpm	60.0 - 18,000 rpm	60.0 - 10,000 rpm
Resolution	0.1 rpm/fpm below 2,000 rpm 1 rpm/fpm above 2,000 rpm		
Display	5 digits LED, 10mm High		
Setup Accuracy	± 0.01%		
Temp. Drift	± 0.01%		
Lamp	Xenon flash lamp		
Special Function	Multiplier (× 2) flashes, Divider (÷ 2) flashes Three complete setup memory (M1, M2, M3) Four speeds (Fast, Middle, Slow, Fine) adjustment for quick setting stability.	Rotary RPM/FPM adjustment. Fine adjustment. External trigger.	
Power Supply	AC 110V or 220V± 10%, 50/60 Hz (Please specify voltage when placing orders.) AC100V, AC110V, AC220V, AC240V.		
Power Consumption	Approximately 25 watts. (Full range)		
Operating Temp./Humidity	0°C to 50°C (32°F to 122°F), Below 85% RH.		
Dimension	115 x 115 x 200 mm. without handle (removable)		
Weight	Approximately 1.5 Kg (3.3 Lb.)		
Standard Accessories	AC power cord, Xenon Lamp, Operation Manual		
Optional Accessories	Carrying case (DS-CASE) Xenon Lamp DS-FT-01 (DS-FT-03 for DS-1000)		



* Appearance and specifications listed in this brochure are subject to change without notice.



A complete digital design for speed measuring and View stop motion for fast moving object

Three complete setup memory

Auto store the last RPM / FPM before power off

SHAFIQ SONS

www.shafiqsons.net

info@shafiqsons.net

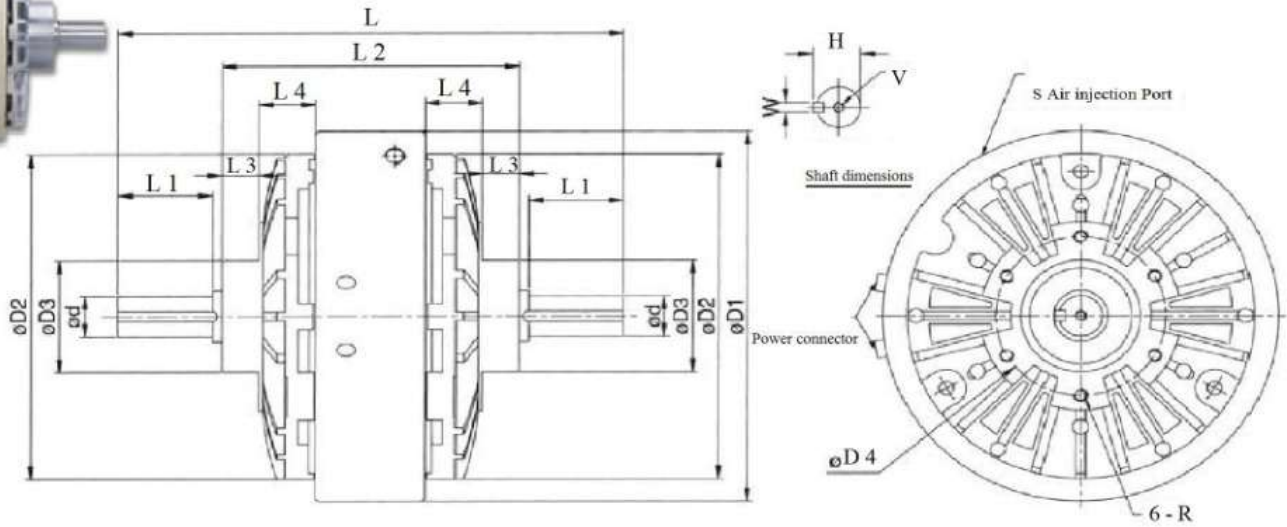
Add : 6-C, Lane 12, Nishat Commercial Area, Defence Housing Authority, Phase - 6, Karachi - PAKISTAN

Mobile : +92-300-202-1096 & +92-332-379-2201

Office : +92-321-585-4890

Skype : mudassirpakistan

POWDER CLUTCHES



MODEL	M-C-1.2	M-C-2.5	M-C-5	M-C-10	M-C-20	M-C-40	
(kgf - m) (N-m) Rated turning distance	1.2 (12)	2.5 (25)	5 (50)	10 (100)	20 (200)	40 (400)	
Capacity DC 24 V (75 C)	(A) Current	0.94	1.24	2.15	2.4	3.5	
	(W) Power	22.5	30	51.5	57.6	84	
	(S) Number of hours set	0.1	0.12	0.13	0.25	0.37	0.4
Moment of inertia (KGcm)	Power input side	1.34×10^{-3}	3.8×10^{-3}	9.5×10^{-3}	3.5×10^{-2}	9.15×10^{-2}	2.4×10^{-1}
	Power output side	4.90×10^{-4}	1.49×10^{-3}	4.8×10^{-3}	2.5×10^{-2}	6.89×10^{-2}	2.2×10^{-1}
Allowable slippage rate with forced air cooling	(Pa) Air pressure	3×10^4	5×10^4	1×10^5	6×10^4	5×10^4	2×10^5
	(m ³ /min) Air volume	0.2	0.4	0.6	1.1	1.6	2.0
	(W) Power	250	380	700	1100	1900	2800
Weight (kg)	5.2	9	14.5	34	53	100	
Maximum number of turns (r/min)	1800						
Weight of powder (g)	20	33	60	140	225	370	
Exterior dimensions	D1	152	182	219	278	327	395
	D2	126	160	196	260	301	365
	D3 (g7)	42	55	74	100	110	130
	D4	64	78	100	140	150	200
	L	192	230	294	360	408	500
	L1	29	43	55	65	69	92
	L2	124	136	172	216	250	291
	L3	15	17	30	28	30	35
	L4	25.5	26	28	46	56	70
	d (h7)	15	20	25	30	35	45
	H (h ₂)	17	22	28	33	38.5	48.5
	W(p7)	5		7		10	12
	V	M4*0.7P*8L	M5*0.8P*10L	M6*1P*12L	M10*1.5P*20L		
R	M6*1P*10L			6-M10*1.5P*15L		8-M10*1.5P*15L	
S	1/8		1/4		3/8		

Applications

Printing
MachineWinding
MachineSlitting
MachineFolding
Machine

Laminator

Coating
MachineExtrusion
Laminator

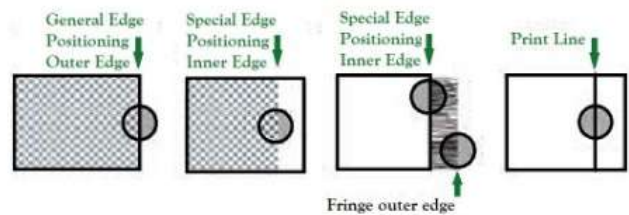
System Component



Features

1. 40 servo control with automatic speed adjusting tracking, powerful thrust and fast response.
2. Internal systems have contact less semiconductor control that provides reliability and durability.
3. Three type of intallations, insertion, external, or desktop.
4. Detects and controls all types of color including transperent film, reflective foil, low color difference, etc.
5. High precision, clean, no operating noise, easy to install and maintain.
6. EPC-81 very sensitive infrared sensors with 0.05mm accuracy. Can detect double layered films and do special edge sensing.
7. LPC-81 can choose among edge, color difference, or print line sensing for best results.
8. LPC-81 can detect print lines of widths from 0.5mm to 5mm, Broken and dotted lines are also detectable.

Detection



Model	EPC-81	LPC-81
Operation	Auto / Manual / Center Positioning	
Response Time	<0.01s	
Detection	Edge	Picture (Color Difference), Print line, Edge
Sensor	DS model	DLP model
Tracking Speed	24mm/s Auto Adjustment	
Actuator	AD-24V Max.load 2000Kg	
Stroke	70 • 140 • 280mm	
Line Speed	MAX.250m/min	
Power Source	1Φ220V 3A	
Ambient Temperature	60°C	

* Please use EPC-57S or LPC-68S if the line speed is above 250m/min or if the load is greater than 2000kg

Microprocessor Based

STROBOSCOPE

Keyboard Operating, Wide Range, High Accuracy

OPERATION :

The DS-180 series are capable of both internally and externally triggered modes of operation.

In the internal mode :

- Press the Power Switch to "ON"
- Press the Function Switch to "INT."
- Turn the Flash Rate Control from high speed to low speed, until the first stationary image of the moving object appears.

In the external mode :

- Fix the sensor, for example Sick NT-6, over a mark of a printing material at a distance of 9mm
- Connect the signal produced by the above mentioned sensor into the Input Jack on the panel of the stroboscope.
- Press the Power Switch to "ON".
- Press the Function Switch to "EXT".
Whenever the printing material moves, the stationary images appears clearly all the time.

The DS-180L is the first stroboscope in the world to illuminate a 40-by-120cm. super-wide area, 20cm. away, with super-bright light.

An excellent choice to assure perfect printing!

- * Capable of both internally and externally triggered modes of operation.
- * External triggering for stable synchronization.
- * The power source of pickoffs equipped.
- * Easy to mount on a steel pipe of 25cm.φ

**BEST FOR BIG
RE-WINDERS AND
PRINTING PROCESS**



SHAFIQ SONS

www.shafiqsons.net

info@shafiqsons.net

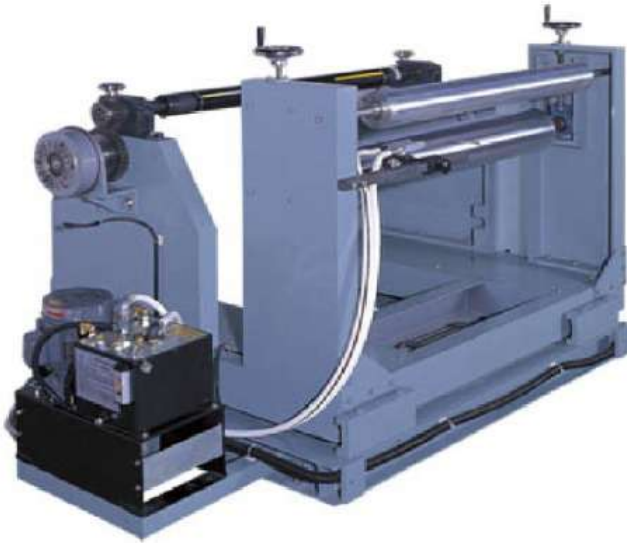
Add : 6-C, Lane 12, Nishat Commercial Area, Defence Housing Authority, Phase - 6, Karachi - PAKISTAN

Mobile : +92-300-202-1096 & +92-332-379-2201

Office : +92-321-585-4890

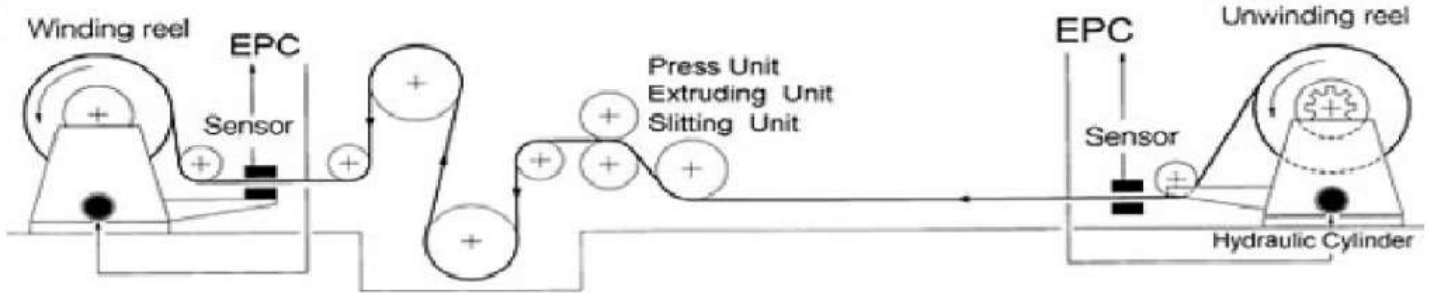
Skype : mudassirpakistan

EDGE POSITION CONTROLLER



- **Sensor**
- **Auxiliary**

Sensing Nozzle
Hydraulic Cylinder



*Model	Type**	Description	Rated Pressure kgf/c ² (mPa)	Pump Capacity (l/min)	Cylinder Bore(mm) Force(kgf)/Rated Speed(mm/s)					Output Power (HP)
					40mm	50mm	63mm	80mm	100mm	
C202	A	Heavy Duty	20	3	212/40	330/25	/	/	/	1/2
	AM									
	AC									
	AMC									
C204	A	Heavy Duty	20	5.2	/	330/44	560/27	/	/	1/2
	AM									
	AC									
	AMC									
C210	A	Heavy Duty	20	13.1	/	/	/	906/43	1428/27	1
	AM									
	AC									
	AMC									

How to order (ordering information)

C202 → **T623** → **A** → **φ50** X **200st**
 Model Model Type Cylinder Bore Stroke
 5: 50 Hz 6: 60Hz
 23: 220/380V
 A: Automation
 AM: Manual-Automation
 AC: Automation-Center
 AMC: Manual-Automation-Center

WEB INSPECTION SYSTEM



► Desigend for 120DC Demanding Applications

The Ultra 120DC is the workhorse providing the user with a high specification web inspection system and incredible value for money.

With a large 120mm *90mm view a massive 38 times zoom providing magnification of print defects up to 95 times and a built in high-torque stepper motor drive the 120DC is a robust system suitable for both narrow and wide web installations and will give maximum benefit to the most demanding printers.

► Split Screen Imaging as standard

As a standard feature we've included split screen. This allows the printer to store an image on one side of the screen for comparison with real time image on the other side. This useful for reel to reel colour compariosn and maintaining colour consistency throughtout a job.

► Automatic Constant Scan and Label Checking as Standard

Automatic Constant Scanning and Lable Checking programs are included as standard. Both of these waste saving features help to spot print errors quickly and to maximise efficiency.

► Graphical On Screen Display

To enable the printer to take maximum advantage of the Ultra's rich feature set, the system is controlled via remote keypad and full color Graphical On Screen Display, and as with all Ultra's Series System, Simplicity is a key ingredient of the design

► Superior Image

Image quality of the Ultra is also superb,. The system uses the lates Sony Super-HAD CCD. In simple terms the means superior crisper colours reproduction and coupled with a motorised 14 x optical zoom lens the Ultra can magnify your print defects over 40times on a standard 17" monitor

► Manual Traverse Or Fully Motorised

The Ultra 120DC can be supplied either with a manual traverse or with an optional high torque stepper motor drive to maximize its effectiveness in helping you to achieve superb print quality.

► Choice of Maximum Viewing Areas

As standard the Ultra is supplied with a maximum viewing area of 120mm x 90mm, and a 'Tiny' Camera case for installation where space is at a minimum. But for those who need to see more and space is not such a problem this can be upgraded to 110mm x 75mm or 150mm x 120mm.

► Flexible Installation

And if all that isn't enough we've packed the design into a console footprint not much larger than a sheet of A 4 paper, that can be easily mounted onto the smallest of print machine. The console is big enough to sit on monitor on, but also small enough that it can be mounted on its side out of the way.

Specification	Features	Standard Cable Sizes	Optional Equipment
Sony Super-HAD CCD sensor 460 TV Lines 30 x Zoom Ratio 95 x magnification on 17" monitor Camera size - 320 (H)x130(W)x90mm(D) Console size - 65(H)x300(W)x230mm(D) Power input 110 / 2300 vac Remote keypad control Magnetic Gear Sensor Internal surge protection 4 Updates per second	Automatic Constant Scan Label Checking Split Screen comes as Standard 180 degree Image Flip Full Colour Graphical On Screen Display Non-volatile program settings Standby mode with Remote Power Up / Down Simple DIY Installation	Camera to console Umbilical - 3m Console to keypad - 3m Console to gear sensor 3M Manual or motorised tranverse Upto 500mm Traverse as standard	Backstrobe Multi Monitor Output UV security ink viewing Strobe Larger Viewing Area



SHAFIQ SONS

HYDRAULIC WEB GUIDE CONTROL SYSTEMS



Shafiq Sons EPC is a major web control product that automatically aligns the edges of web. They have been adopted by hundreds of companies and have very been successful in reducing personnel costs, accurate streamlining production operations, fast response, high durability, stability, heavy load, and tranquility etc. As to the sensor, sensing nozzle which is easily available and sensitive fast detects various web lines for EPC control system. So far, general type C-202,C-204 and special type C-210 in **Shafiq Sons** can be used for the EPC system on various customer's winding specifications. Moreover, **Shafiq Sons** customized (OEM and ODM) EPCs are our custom manufactured and designed to your special load specifications.

■ C202A



■ C202AM

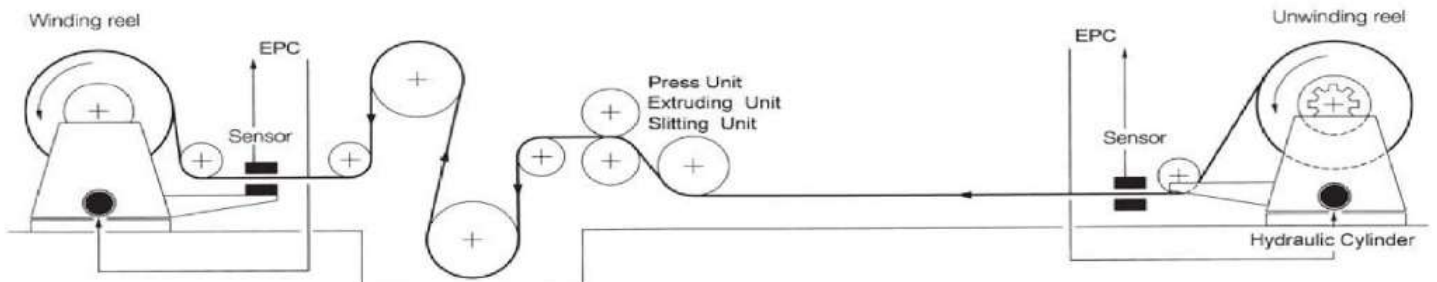


- **Sensor**
- **Auxiliary**

Applications

Those three types C-202,C-204 and C210 in **Shafiq Sons** are adopted and are to correct where the edge of an irregularly wound roll feeds to a slitting, printing or laminating processes, meandering of the web occurs in the intermediate guide roll and winding reel systems. The controller operates the work cylinder to move the reel in the direction to return the edge to its established path.

Sensing Nozzle Hydraulic Cylinder





Automatic iNK Viscosity Controller :

The SCS-550 viscosity controller is designed to control a stable ink concentration, the concentration of solvents during printing and is built for best ink / solvent concentration during operation.

Reliable operation can result in substantial reduction of material cost.

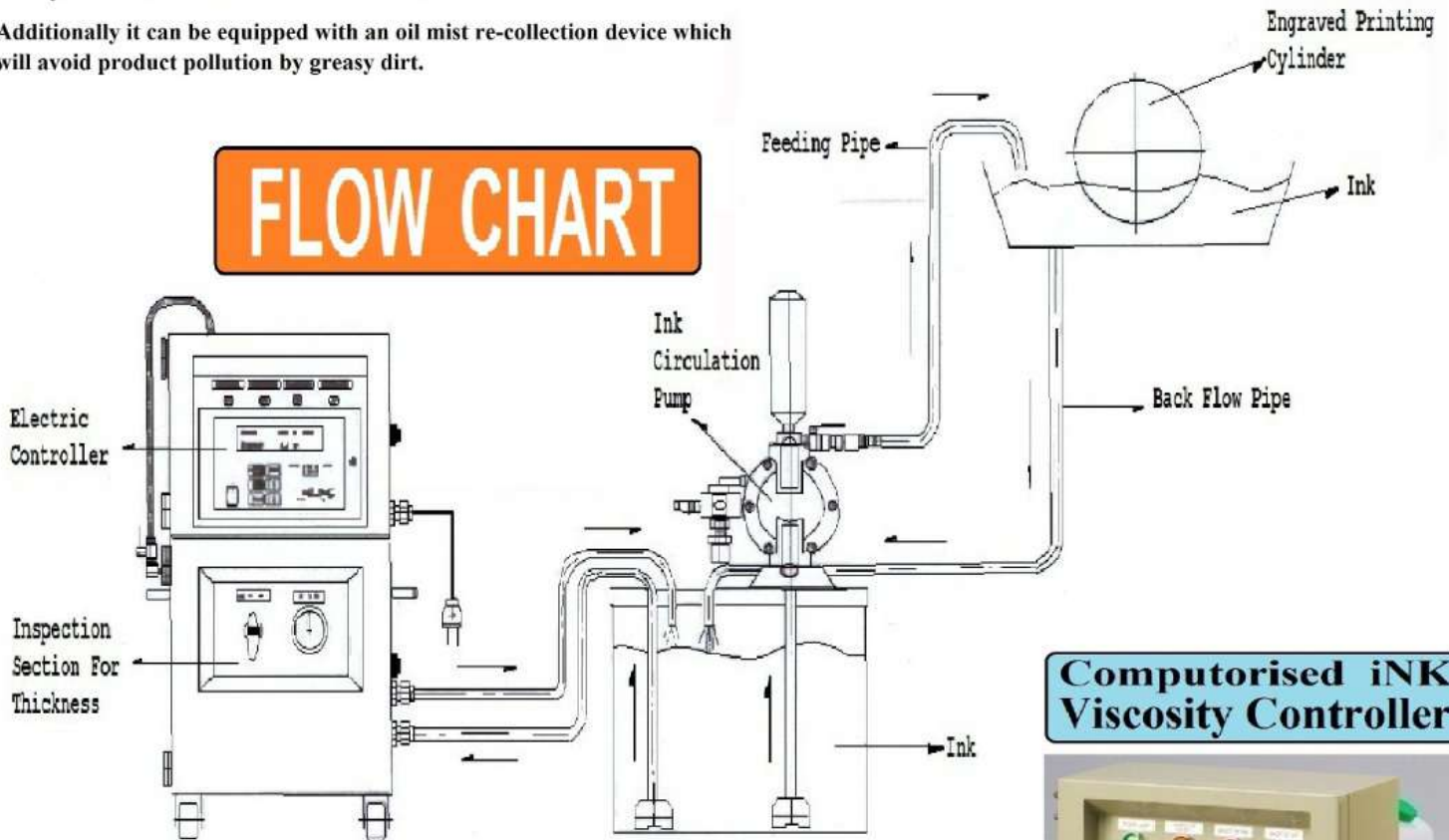
The unit can be employed as an auto blending device in ink blending.

When controlling the ink solvent concentration, the unit provides different sound alarm modes (continuous or intermittent) for various statuses.

Designed as an explosion proof system, the electric controls and flow line of solvent are separated completely and uses pneumatic valves.

The system allows direct measurement of the fluid materials.

Additionally it can be equipped with an oil mist re-collection device which will avoid product pollution by greasy dirt.



Computerised iNK Viscosity Controller



This product is perfect for printing machine and laminating machine, which can reduce consumption and the labor intensity, improving the printing and laminating quantity.

Main technical parameters:

Viscosity measure range: 10-50S

Volum of solvent container: 17L

Overall dimension: 30*30*75

Control precision: < 0.5S

Power voltage: 180-240V

Pneumatic Diaphragm Pump



This product is perfect for printing machine and laminating machine, which can reduce consumption and the labor intensity, improving the printing and laminating quantity.

Key Features :

Air Inlet: 1/4"

Port : 3/8" (10mm)

Liquid Outlet: 3/8"

Exhaust: 3/8" (with silencer)

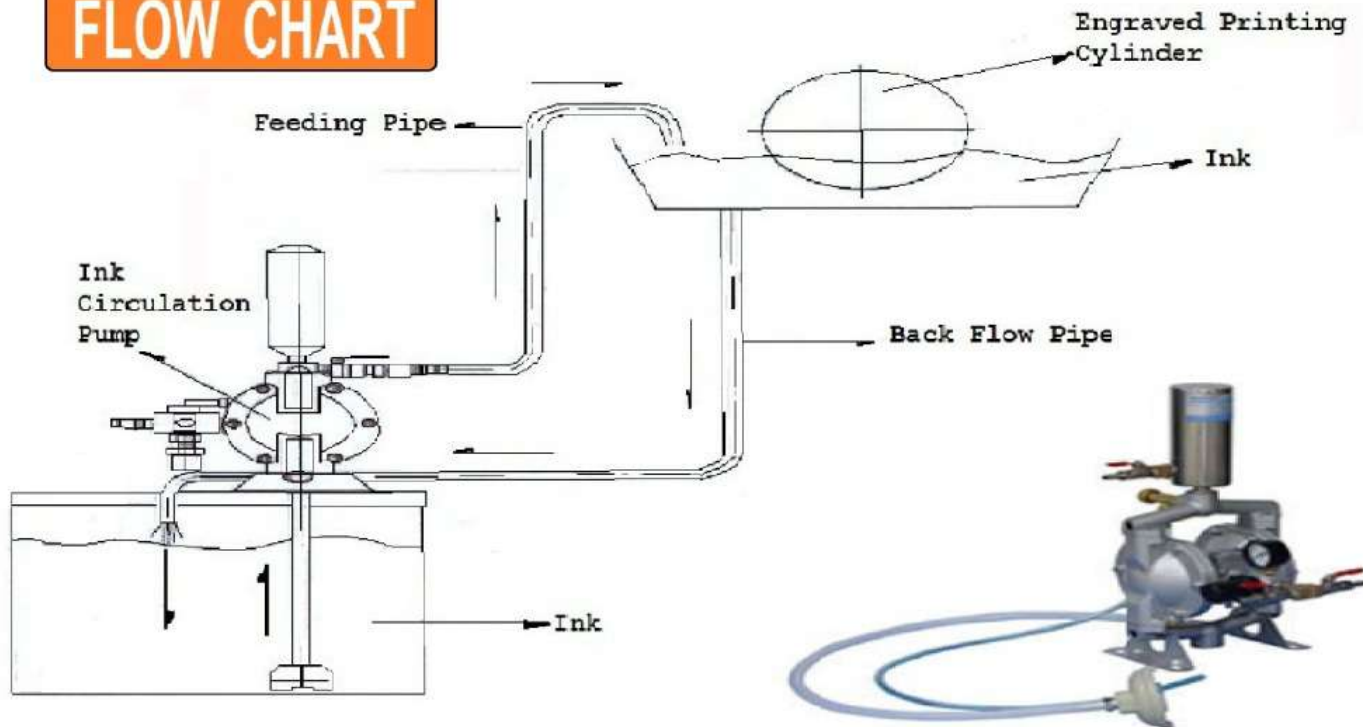
Port Dimensions Liquid Inlet: 3/8"

Diaphragm: 52 cc Operating Pressure: 2 - 6 kg/cm²

Discharge volume per cycle Rubber Diaphragm: 52 cc PTFE



FLOW CHART



INK PUMP



INK MIXING PUMPING SOLUTION

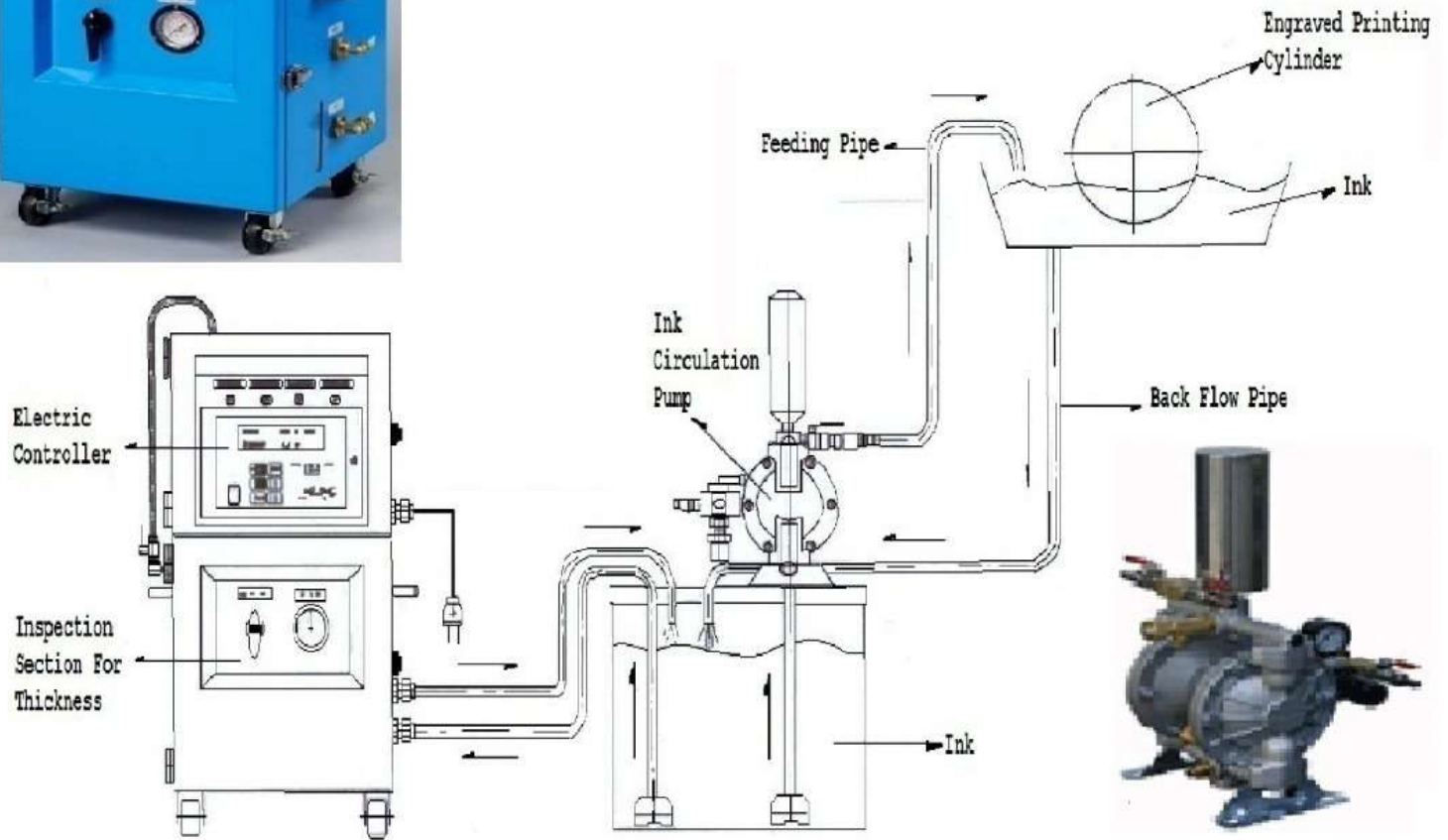
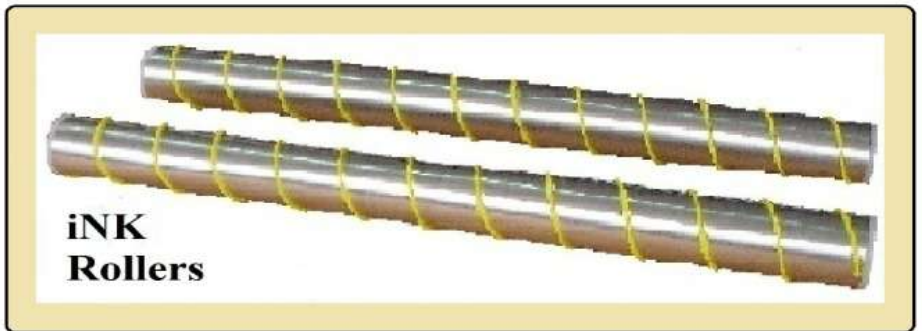


iNK MIXER

iNK SHADE MATCHING SOLUTION



Computerised iNK Viscosity Controller





iNK PUMP



iNK MIXING PUMPING SOLUTION



iNK MIXER

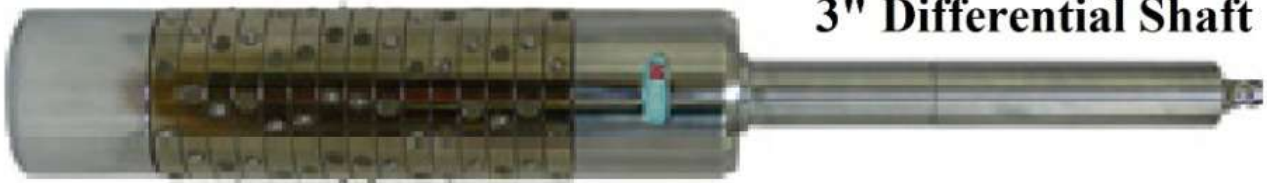
DIFFERENTIAL SHAFT



6" Differential Shaft



3" Differential Shaft



Differential Shaft
Spare Part 1



Differential Shaft
Spare Part 2



Differential Shaft
Spare Part 3



Differential Shaft
Spare Part 4



Differential Shaft
Spare Part 5



Differential Shaft
Spare Part 6



Differential Shaft
Spare Part 7



Differential Shaft
Spare Part 8

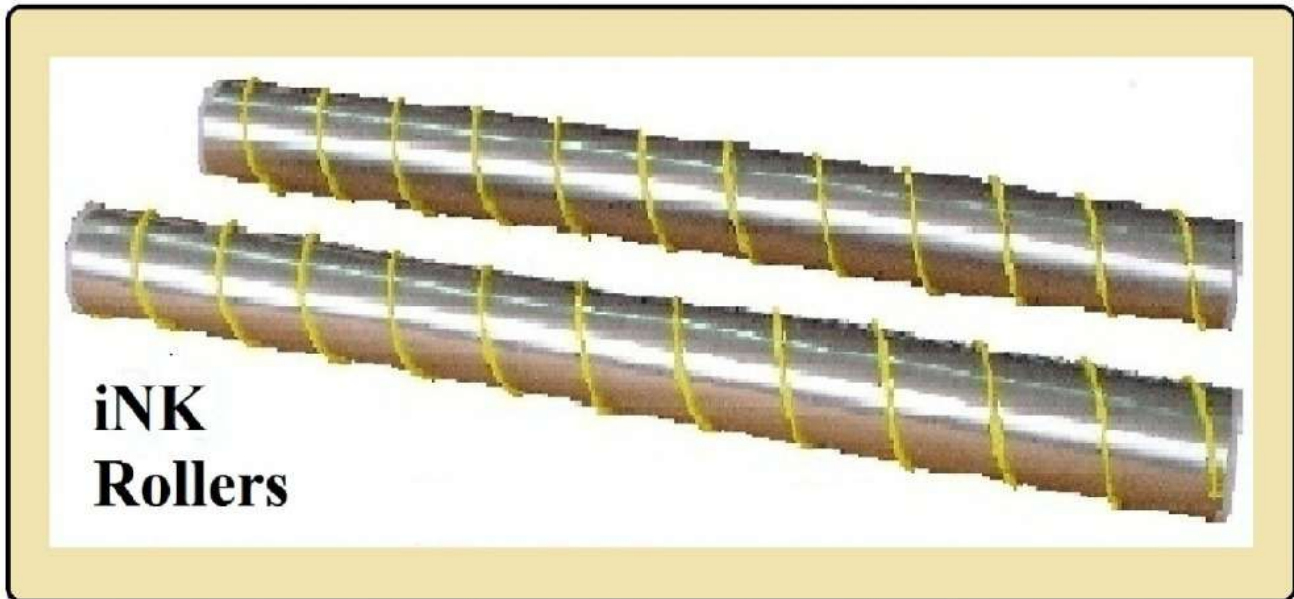




Rope wrapped magnetic ink mixing roller :

Mix ink in printing process, isolate bubble, and prevent crusting.

We choose high quality aluminum tubing and corrosion resistant, quality assurance, long life and beautiful appearance, easy to clean, fast eliminating air bubbles, increasing ink flow circulation, isolating impurities, to prevent the ink dried, to improve printing quality.



Specifications

1. Rope wrapped magnetic ink mixing roller
2. Floating on the ink surface
3. We can make any length according to clients' need

Rope wrapped magnetic ink mixing roller

This rope wrapped magnetic ink mixing roller has good stirring performance, floating on the ink surface.

When roller rolling, the rope wrapped magnetic ink mixing roller rotates the opposite direction by the adsorption of magnetism.

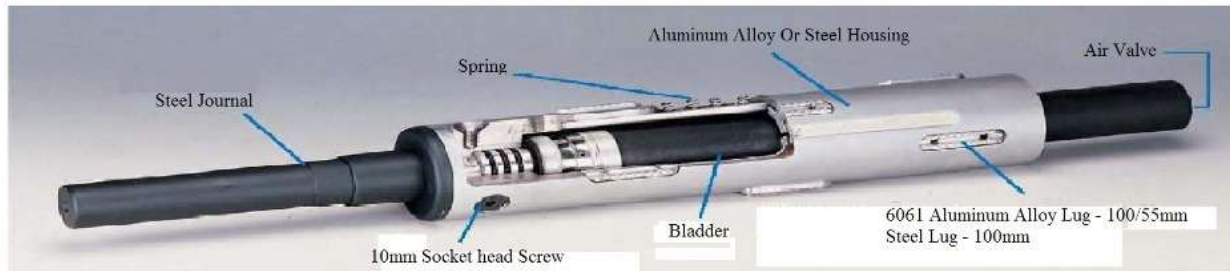
The surface layer ink will turn around bringing along with the ripple, so it makes ink mixed equably to avoid the quality problem.

AIR (PNEUMATIC)SHAFTS

Shafiq Sons Air(pneumatic) Shafts

Lowest Cost, Highest Reliability, Steel Housing-heaviest duty, Aluminum Alloy Housing-light weight, One Year Comprehensive Warranty, Custom specification are available, Automated roduction, Professional design and evaluation, O.D. 8mm~400mm or more, Length 50mm~7000mm or more.

Diagram of An Air Shaft



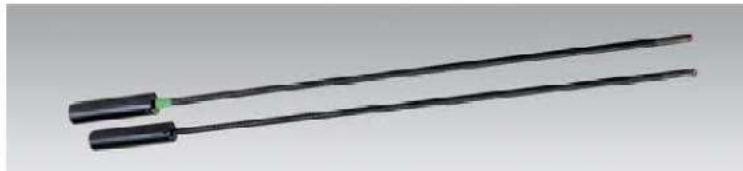
● Accessories - Various Feature Air Filling Gun / Air Hose



Applications: For Printing, Paper, Laminating, Rewinding, Slitting Industries etc.
Type: Lug or Leaf Type
Diameter Length: To your specifications



Applications: For Chemical Fiber or Textile Industry
Type: Leaf Type
O.D.Length: To your specifications



Applications: For Pharmaceutical Industry
Type: O.D. 12mm
Length: To your specifications



Applications: For Clean Room
Type: Lug or key Type
O.D. Length: To your specifications



Applications: For Adhesive Tape Industry
Type: Lug or key Type, leaf Type
O.D. Length: To your specifications



Applications: For Shrink Film Making, Labeling, Bag Making Industries
Type: Leaf Type
O.D. Length: To your specifications

SHAFIQ SONS

www.shafiqsons.net

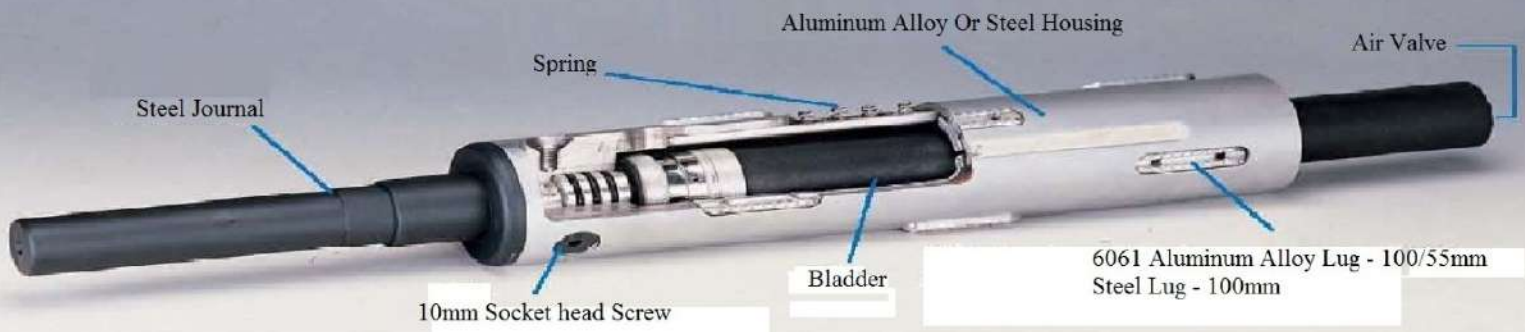
info@shafiqsons.net

Add : 6-C, Lane 12, Nishat Commercial Area, Defence Housing Authority, Phase - 6, Karachi - PASKISTAN

Mobile : +92-300-202-1096 & +92-332-379-2201

Office : +92-321-585-4890

Skype : mudassirpakistan



AIR CHUCKS SAFETY CHUCKS MACHINERY CHUCKS



Shafiq Sons air chucks are economical and light weight.

They have established a good reputation in the industry for reliable non-slip grip that affords maximum roll control and permits the running of machines at maximum speed.

Shafiq Sons air chucks are available in diameters to fit 3",4",5"...ID core to 12"(300mm) and they can be used both with shafts or in shaftless applications.

Please take a look at the following benefits of **Shafiq Sons** Air Chucks:

Lowest Cost, Highest Reliability (Bladder Inside Aluminum Alloy Housing), Heaviest Duty Longest Life and Lowest Maintenance, All Aluminum Alloy, Insert Easily, Highest Torque Grip

TWO YEAR COMPREHENSIVE WARRANTY of Bladder, Various gripping Lengths (FL)

1"x3"x80(FL)x130mm(TL)



11.5x300(FL)x366mm(TL)



3"x5"x300(FL)x410mm(TL)



Machinery Chuck :



Safety Chucks :



SHAFIQ SONS

www.shafiqsons.net

info@shafiqsons.net

Add : 6-C, Lane 12, Nishat Commercial Area, Defence Housing Authority, Phase - 6, Karachi - PASKISTAN

Mobile : +92-300-202-1096 & +92-332-379-2201

Office : +92-321-585-4890

Skype : mudassirpakistan

Press Auto—Control Equipment **ST-2000B[®]**



Kesai™ ST-2000B[®] Color Register Control System

Capability

- Roller perimeter: 250–1500mm
- Printing speed: 10–500m/min
- Printing precision: ± 0.1 mm
- Correction precision: ± 0.01 mm



System specialties

- Distributive LAN control configuration, strong expanding ability. Currently error display, error correction and error affirm.
- Color LCD display with Chinese English operation menu, automatic registration, automatically and manually operation mode.
- Line mark and wedge mark types used. Automatic addressing, tracing the ahead color. One way in length direction control.
- Fast response speed, register at lower speed, this greatly reduces wastage at the speed elevating of the press running.
- Suitable to print PE, OPP, BOPP, PET, PVC, thin paper, Aluminum foil, cellophane etc.
- Width parameter setting range, suitable for more type press machine using.



Press Auto—Control Equipment **ST-2000C[®]**



Kesai™ ST-2000C[®] Color Register Control System

Capability

- Roller perimeter: 250–1500mm
- Printing speed: 10–500m/min
- Printing precision: ± 0.1 mm
- Correction precision: ± 0.01 mm



System specialties

- Distributive LAN control configuration, strong expanding ability. Currently error display, error correction and error affirm.
- W/B LCD display with Chinese English operation menu, automatic registration, automatically and manually operation mode.
- Line mark and wedge mark types used. Automatic addressing, tracing the ahead color. One way in length direction control.
- Fast response speed, register at lower speed, this greatly reduces wastage at the speed elevating of the press running.
- Suitable to print PE, OPP, BOPP, PET, PVC, thin paper, Aluminum foil, cellophane etc.
- Width parameter setting range, suitable for more type press machine using.



Lamella Doctor Blades

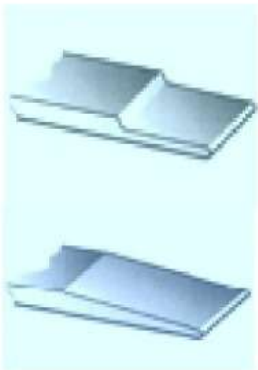


Sharpe Edge, Lamella Doctor Blades help maintain your printing quality Protection of your investment

“**Sharpe Edge**” is the covering brand name for the doctor blade delivery programme of SHAFIQ SONS.

The close cooperation between **SHAFIQ SONS** and the material supplier guarantees a doctor blade quality of perfect evenness and highest purity. The continuous exchange of information leads to innovations, which are to the benefit of the end users, For example: The long service life, of **Sharpe Edge** Quality Doctor Blades. Their availability is a contribution to the protection of your investment in cylinders and printing presses.

Our continuous quality assurance - the key to perfect printing results Your requirement for maximum precision, long service life and reliable delivery will be fulfilled at 100% this stands the name of SHAFIQ SONS for our product quality is assured by stringent raw material and end product control.



DOCTOR BLADE LAMELLA EDGE

with rounded and polished lamella-edge*
Available materials: Type 20C, Type 18C, Gold Longlife, Chromflex

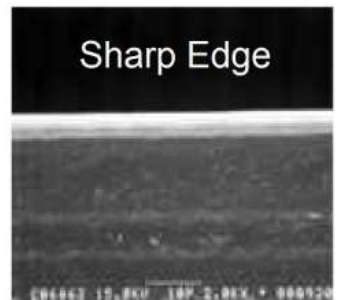
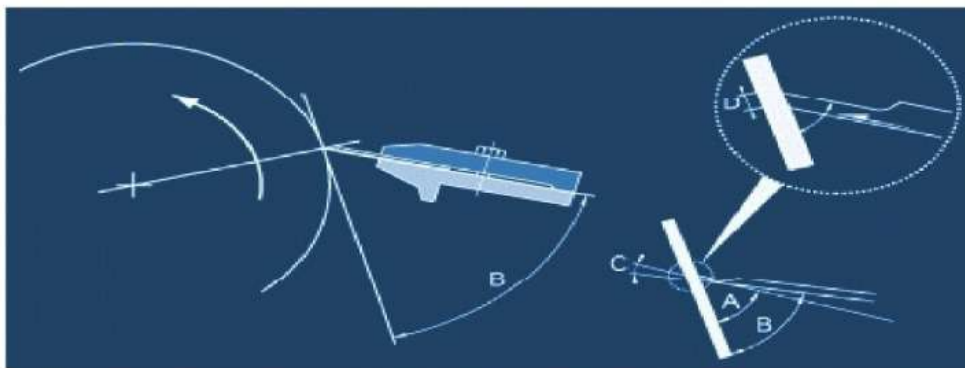


STRIP BLADE

with rounded and polished edge Available materials,
Type 20C, Type 18C, Gold Longlife, Chromflex

DOCTOR BLADE BEVEL EDGE

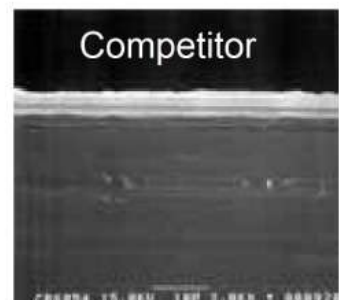
Bevels: Angles 1.5° - 45°
Available materials: Type 20C, Type 18C, Gold Longlife, Chromflex



Individual solutions according to requirement We keep stock of various different sizes at your disposal.

We deliver exactly the Sharp Edge Doctor Blades specification required your printing order:

Blade thickness, blade width, lamella width and lamella thickness with by accuracy.





Kesai™ ST-2000E+ Color Register Control System

Capability

- Roller perimeter: 250–2500mm
- Printing speed: 10–1000m/min
- Printing precision:
 - Top/bottom register ± 0.01 mm;
 - Right/left register ± 0.02 mm
- Correction precision: ± 0.01 mm



System specialties

- CAN-bus communication technology, strong expanding ability. Easy for installation.
- Both direction register function, color mark horizontal array, single mark register, presetting and double heads printing function, re-printing, transversely cut, die cut, impress function all that pressroom technique are suitable.
- Individual error indicator, simple and easy to operate the error amendment and confirmation.
- Multi-register mode, match the forward color mark and random appoint color mark.
- Self-motion tracing address function, individual control of both direction register, easy for operation.
- High integration technology, strong anti-jamming ability.
- Achieve the shaft-less driven machine control through the servo system.
- Suitable to control the PE, OPP, BOPP, PET, PVC, yew paper, paper and aluminum foil.
- Fast response speed, register at lower speed, this greatly reducing the wastage at the print speed increase.
- Freely Parameter setting to match different press machine requirement.



Press Auto—Control Equipment **ST-2000F[®]**



Kesai™ ST-2000F[®] Color Register Control System

Capability

- Roller perimeter: 250–1500mm
- Printing speed: 10–500m/min
- Printing precision: ± 0.1 mm
- Correction precision: ± 0.01 mm



System specialties

- Conglomerate the color register and the video inspection system into one control station, Have the full functions of video inspection system.
- Distributive LAN control configuration, strong expanding ability. Currently error display, error correction and error affirm.
- Color CRT display with Chinese English operation menu, automatic registration, automatically and manually operation mode.
- Line mark and wedge mark types used. Automatic addressing, tracing the ahead color. One way in length direction control.
- Fast response speed, register at lower speed, this greatly reduces wastage at the speed elevating of the press running.
- Suitable to print PE, OPP, BOPP, PET, PVC, thin paper, Aluminum foil, cellophane etc.
- Width parameter setting range, suitable for more type press machine using.



Press Auto—Control Equipment **ST-2000E[®]**



Kesai[™] ST-2000E[®] Color Register Control System

Capability

- Roller perimeter: 250–2500mm
- Printing speed: 10–1000m/min
- Printing precision: ± 0.1 mm
- Correction precision: ± 0.01 mm



System specialties

- Distributive LAN control configuration, strong expanding ability. Currently error display, error correction and error affirm.
- Color LCD(Touch Screen) display with Chinese English operation menu automatic registration, automatically and manually operation mode.
- Line mark and wedge mark types used. Mark ahead and mark across order. Two way in length and side direction control
- Fast response speed, register at lower speed, this greatly reduces wastage at the speed elevating of the press running.
- Suitable to print PE, OPP, BOPP, PET, PVC, thin paper, Aluminum foil, cellophane etc.
- Automatic addressing, multi-trace methods such like tracing the ahead color and tracing the appoint color.
- Width parameter setting range, suitable for more type press machine using.
- Motor pre-alignment (MPA) function at the start of the press run. Two different jobs



Press Auto—Control Equipment **ST-3000®**



Kesai™ ST-3000® Color Register Control System

Capability

- Roller perimeter: 250–2500mm
- Printing speed: 10–1000m/min
- Detection accuracy:
Top/bottom register ± 0.01 mm
Right/left register ± 0.02 mm
- Correction precision: ± 0.01 mm



System specialties

- CAN-bus communication technology, 2 in one system by color registers and web video inspection.
- The Individual remotely controller with 5.7" true color LCD, simple and easy to display the real time of the printing situation to lead the operator to adjust the mark sensor as quickly as possible.
- This remotely controller can work Individual without the main control cabinet.
- Multi-register mode, match the forward color mark and random appoint color mark.
- Both direction register function, single mark register, presetting and double heads printing function, re-printing, transversely cut, die cut, impress function all that pressroom technique are suitable. Achieve the shaft-less driven machine control through the servo system.
- Fast response speed, register at lower speed, this greatly reducing the wastage at the print speed increase.
- Freely Parameter setting to match different press machine requirement.
- Strong expanding ability.
- Suitable to control the PE, OPP, BOPP, PET, PVC, yew paper, paper and aluminum foil.
- Self-motion tracing address function, simple and easy to operate the error amendment and confirmation.

