



PROJECT MANAGEMENT TERMS

- GANTT CHART
- CRITICAL PATH
- MILESTONE
- TIMEBOXING
- SCHEDULE VARIANCE





www.erdemevren.com

Gantt Chart

A visual timeline for project tasks and milestones.



PROJECT MANAGEMENT TERMS





www.erdemevren.com

Critical Path

The sequence of tasks that determine the minimum project duration.



PROJECT MANAGEMENT TERMS

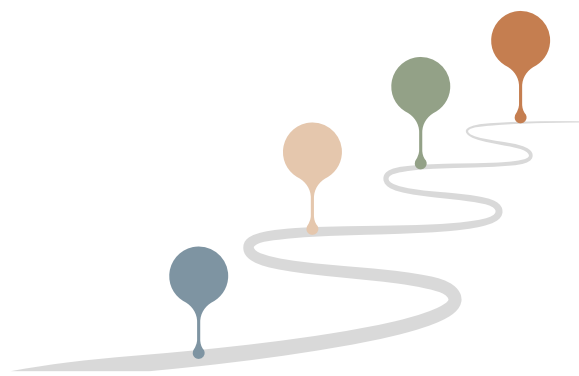




www.erdemevren.com

Milestone

A significant point or event in a project.



PROJECT MANAGEMENT TERMS



www.erdemevren.com

Timeboxing

Allocating a fixed time period for each project task.



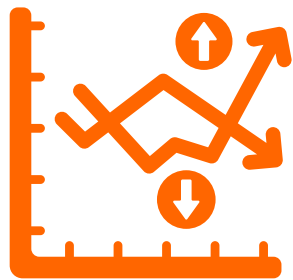
PROJECT MANAGEMENT TERMS



www.erdemevren.com

Schedule Variance

The difference between planned and actual schedule performance.



PROJECT MANAGEMENT TERMS



www.erdemevren.com

 **Follow me**

**DON'T FORGET TO
LIKE, SHARE & SAVE
IF YOU LIKE THIS POST**



PROJECT MANAGEMENT TERMS

