



PROJECT MANAGEMENT TERMS

- RESOURCE ALLOCATION
- RACI MATRIX
- STAKEHOLDER ANALYSIS
- TEAM CHARTER
- CAPACITY PLANNING





www.erdemevren.com

Resource Allocation

Assigning available resources to various tasks and activities.



PROJECT MANAGEMENT TERMS





www.erdemevren.com

RACI Matrix

A tool for defining
roles and
responsibilities within
a project.



PROJECT MANAGEMENT TERMS





www.erdemevren.com

Stakeholder Analysis

Identifying and
assessing
stakeholders and their
influence.



PROJECT MANAGEMENT TERMS





www.erdemevren.com

Team Charter

A document that defines team norms, values, and roles.



PROJECT MANAGEMENT TERMS

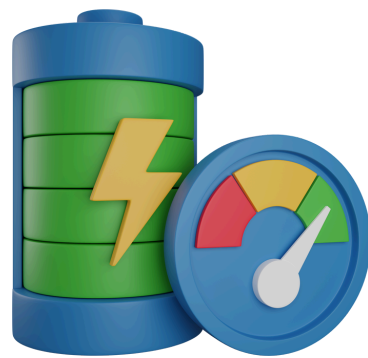




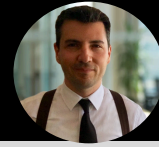
www.erdemevren.com

Capacity Planning

Ensuring resources have the necessary skills and availability.



PROJECT MANAGEMENT TERMS



www.erdemevren.com

 [Follow me](#)

DON'T FORGET TO
LIKE, SHARE & SAVE
IF YOU LIKE THIS POST



PROJECT MANAGEMENT TERMS

