

Bruton & District Horticultural Society



Show Schedule

Saturday 22nd August 2026

Sports Hall, King's School, Bruton

Staging Exhibits starts at 8:30am

Staging finishes at 10:30am

Doors open 2:30pm

Presentation of prizes at 4:30pm

Admission £2 - Children and members free

www.brutonhorticultural.org.uk



**AWARD-WINNING
GARDEN CENTRES,
RESTAURANTS
AND FARM SHOP**

Two year hardy plant guarantee

Tree planting

Garden advice and design

Plant loan

Hanging basket planting

Container planting

Free eco-friendly gift wrapping
Free delivery within 25 miles


**THE
GARDENS
GROUP**

CASTLE | BRISMORE | POUNDBURY

BRISMORE GARDENS

Tintinhull Road, Yeovil BA21 3NU

Tel: 01935 411000

CASTLE GARDENS

New Road, Sherborne DT9 5NR

Tel: 01935 814633

POUNDBURY GARDENS

Peverell Avenue, Poundbury DT1 3RT

Tel: 01305 257250

OPEN 7 DAYS A WEEK

www.thegardensgroup.co.uk



PRESIDENT'S PREFACE

I'm always amazed at the quality of the summer produce at the show. This preface is written in the spring: snowdrops finished, daffodils everywhere, tomato seedlings just coming up, perennials just starting to move, garden centres filling up with plants with frost warnings on, gardeners checking through the seed packets and full of optimism for the veg and fruit this year. Then at the show, there it all is – a profusion of amazing produce.

Of course the show is not just about fruit, vegetables and flowers. Many of us huddled inside during this long, wet winter have been knitting, sewing, crocheting, crafting, painting and drawing, producing the wonderful exhibits at the show. The photographers among us have had to wait for the Spring Newsletter to read the list of photography show classes. I'm particularly looking forward to seeing the entries for 'Nature's Patterns' to include spirals, textures and so on. Ripple marks on sand? Young fern tops unfurling? So much to choose from.

Do share with the rest of us what you have produced in the seasons leading up to the show. Don't be the one (there's always one) who looks at the displays and says they have one just as good at home.

I hope the weather is not too hot/cold/wet/windy and that we all have a good growing season. See you at our hundred and first show.

Alison Bleasdale, President Bruton Horticultural Society

ACKNOWLEDGEMENTS

The Society is most grateful for the support and help received throughout the year. A special mention is appropriate for those who make this show possible. We thank the Headmaster and Governors of King's School for allowing the hire of the Hall and use of the equipment not only on the day of the Show, but for the two days before it. We are indebted to the local businesses advertising in this schedule; we hope that these businesses in turn benefit. We are also indebted to Sexey's School for printing this show schedule and special thanks go to Battens Solicitors who have once-again sponsored our show.

Guidance for exhibitors

Classes in bold print are new classes for 2026

FLOWERS

Preparation before cutting

Decide what you will show 2 or 3 weeks beforehand and in dry weather keep the soil moist by generous watering. The main flowers of a stem can be aided by removing weak side shoots. Protect from heavy rain and splashing of soil. Check that the staking of tall plants is secure. If pot plants are growing strongly, give them plenty of room, turning the pots often to avoid lop-sided growth.

Cutting

Check how many blooms are required and allow one or two extra in case of damage. Select flowers that are fresh, free from damage due to weather, pests or disease, undeveloped blooms and ones past their peak. On branched stems or sprays a good proportion of flowers (say two thirds) should be 'out'.

Cut on the evening before the show when the flowers/foilage are cool. Stems should be cut long and placed in a bucket of water at once. Slanting cuts aid the uptake of water. Remove unwanted side shoots and lower leaves. Leave overnight plunged in clean water up to their necks in a cool position.

Staging

Remove any florets or foliage damaged on the way to the show. To assist continued uptake of water, recut the base of all stems, making sure that the length retained is right for the size of vase. Exhibits in these classes are not 'arrangements' as such but the judge will be influenced by attractive presentation and the exhibit that displays flowers to the best advantage will make the more favourable impression.

Strive for a balanced exhibit, with your flowers of even size and quality, and in containers of the right proportion. There is nothing against wedging stems in a vase to give stability, providing it is done inconspicuously. Do not allow foliage to show if it is from plants not being exhibited. It adds to the interest if you can label the entry neatly with the name of the variety.

Finally, before you leave

Ensure pot plants have enough water to see them fresh through the show and home again.

Check vases have enough water and are stable, and the entries accord with the schedule (numbers of blooms especially). Make sure you leave the correct entry card against the exhibit.

SECTION A - FLOWERS

Where possible, please state the variety of flower

Class

- | | | |
|----|-----------------------------|--|
| 1. | “Shades of Lavender” | Anything ranging within the blue or purple spectrum |
| 2. | Vase of hardy perennials | At least 4 kinds, 50cm wide max. may include shrubs |
| 3. | Vase of annual flowers | Any varieties, 50cm wide max |
| 4. | Phlox | 3 stems, any varieties |
| 5. | Clematis | 1 specimen bloom in small container |
| 6. | Dahlias | 3 cactus, any varieties |
| 7. | Dahlias | 3 any one variety other than cactus |
| 8. | Dahlia | 1 specimen bloom, 15cm dia max |
| 9. | Dahlia | 1 specimen bloom, over 15cm dia |

Section A (Flowers) continues on page 9





Battens
SOLICITORS

Proud to sponsor the Bruton & District Horticultural Society Show



 Your local office is Castle Cary

 www.battens.co.uk  0800 652 8373



Battens
CHARITABLE TRUST

40 YEAR
ANNIVERSARY

Supporting the local community since 1985



YOUR LOCAL WINE SHOP

Mixed case discounts & free delivery available.

Find us next to Station Road car park in Bruton.

OPEN Tuesday - Saturday from 10am - 6pm

— THE —
CELLARHAND

thecellarhand.co.uk | info@thecellarhand.co.uk
01749 684767 | BA10 0EH



BRUTON MOTOR SERVICE LTD

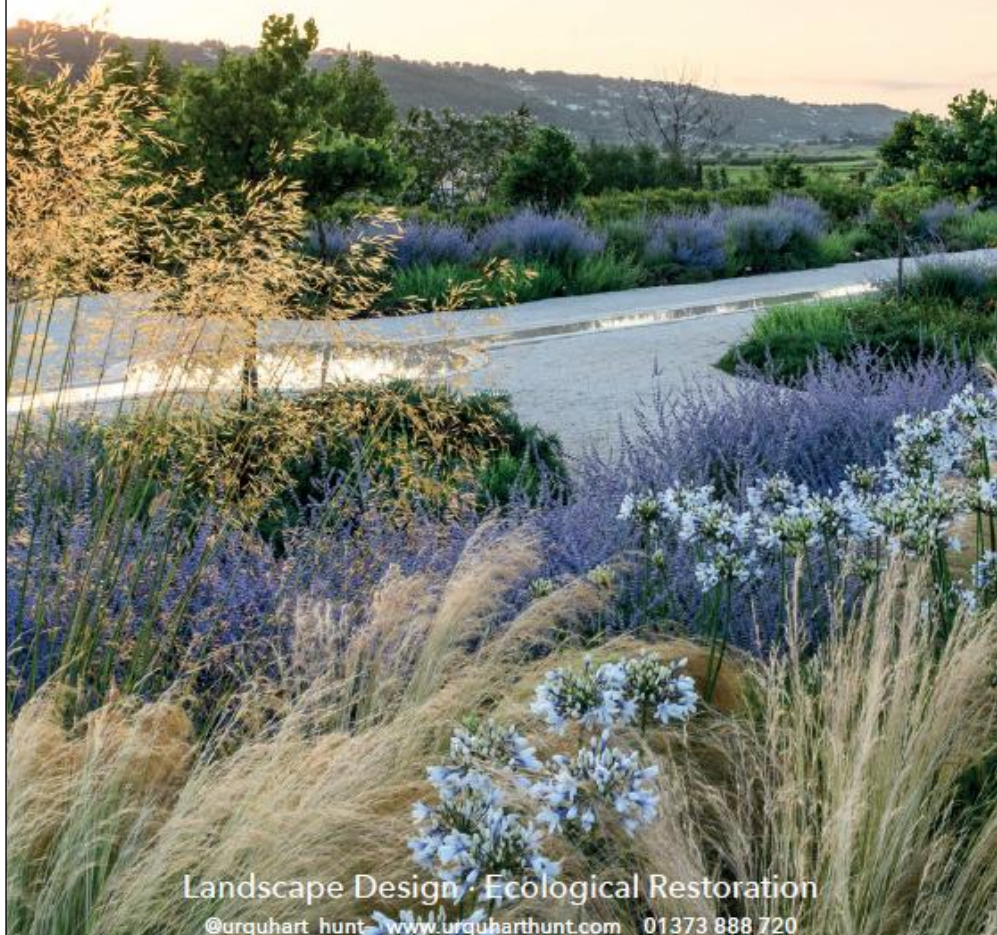
**Bruton Industrial Estate
Station Road
Bruton BA10 0EH**

- **MOT's for all Vehicle Makes & Models**
- **Servicing & Repairs of all Makes & Models**
- **Tyres - Exhausts - Brakes - Suspension**
- **Breakdown & Recovery**
- **Local Collection & Delivery Service**



Rob Mahoney
Tel: 01749 812992
Mob: 07976 401432

URQUHART & HUNT



Landscape Design · Ecological Restoration

@urquhart_hunt · www.urquarthunt.com 01373 888 720

SECTION A - FLOWERS (continued)

Where possible, please state the variety of flower

Class

- | | | |
|-----|--|---|
| 10. | Roses | 3 specimen blooms, any varieties |
| 11. | Rose | 1 single bloom |
| 12. | Rose | 1 stem, multiple blooms |
| 13. | Crocoshmia | 3 stems, any varieties |
| 14. | Penstemons | 3 stems, any varieties |
| 15. | Gladiolus | 1 spike |
| 16. | Sweet Peas | 5 stems |
| 17. | Collection of dried seed heads | |
| 18. | Fuchsia | 6 flower heads, any mix, displayed in a flat container |
| 19. | Pansies or violas | 6 flower heads displayed in a bowl of water, 20cm max |
| 20. | Vase of 5 stems of 1 kind of flower not previously mentioned | |
| 21. | Collection of cut miniature flowers in an egg cup | |
| 22. | Collection of mixed ornamental grasses / sedges | 5 stems |
| 23. | Orchid | Flowering, in a container |
| 24. | One pot plant | Flowering, 20cm pot max, on a saucer |
| 25. | One pot plant | Foliage, 20cm pot max, on a saucer |
| 26. | Petunia "French Kiss" |) Grown from a plug plant,
) kindly donated by
) The Gardens Group,
) 20cm pot max on a saucer |
| 27. | Most fragrant rose * | 1 single bloom |
| 28. | Most fragrant sweet peas * | 3 stems |

* To be judged by the public on the afternoon of the show

VEGETABLES

Water thoroughly all vegetables you intend to show; leaf vegetables will retain freshness, and roots are less likely to be damaged when lifting. Wash root vegetables using a soft cloth or sponge. Select specimens for condition, size, shape, colour, tenderness and uniformity with each other. Display should be one variety in single dishes. These are all assessed by the judge. Size is meritorious, but only if accompanied by quality. Trim the tops of carrots, beetroot, and the like, leaving about 7.5cm of leaf stalk which should then be tied neatly. Remove coloured outside leaves but avoid overdoing it. Stage attractively.

Notes on popular classes

Beans, dwarf or climbing: Straight, fresh snap pods of even length with a stalk and good colour.

Beans, runner: Long, slender, straight pods; condition as above.

Beetroot: Globe type should be spherical, no bigger than tennis ball size, with smooth clear skins and uniform, dark colour, small tap root; long type has broad, clean shoulders tapering evenly.

Cabbage: Solid heart with surrounding leaves and bloom intact; approximately 5cm of stalk.

Carrots: Tender roots of good shape and colour, good size and variety, free from side roots, skins clean and bright.

Courgettes: Young, tender, well matched fruits, colour immaterial but approximately 15cm in length, with or without flowers.

Cucumber: Fresh, young, green, tender and straight fruit of uniform thickness with short 'handle' and flower if possible.

Garlic: Clean off all soil, dry completely. Reduce stem to about 2.5cm. Stage bulbs as complete specimens, do not divide into cloves.

Lettuce: Firm, tender and unbroken hearts of good colour.

Leeks: All parts should be washed. Avoid excessive stripping of outer leaves. Uniform

length, firm and compact. Uniform blanch and no bulbousness at base.

Onions: Firm, thin-necked bulbs, uniform; remove leaves and tie necks neatly.

Peas: Large, well-filled pods, tender seeds; retain 1.5cm stalk and handle by this to keep bloom, hold up to strong light to show any internal damage and reveal number of peas in the pod.

Peas-mangetout: Pods flat with seeds present but undeveloped.

Potatoes: Select well-matched tubers, not more than 175-225g each, clear skins free from blemish, eyes few and shallow, wash carefully.

Peppers and Chillis: Should be of good shape, size and colour with no blemishes

Radishes: Roots should be fresh, firm, medium sized, young and brightly coloured. Foliage should be trimmed to approximately 4cm.

Rhubarb: Take from the garden as grown, not forced. Aim for straight, long, tender stalks with good red colouring. Trim leaves to 7.5cm.

Shallots: Show as separate bulbs not as cluster, dried off and free from staining; cut off root, tie tops neatly; stage on dry sand on a plate and slightly raised in the centre.

Tomatoes: Medium-sized (approximately 6cm diameter) ripe but firm, with stalk (calyx) attached. For small fruited or 'cherry' types, fruit should not be more than 3.5cm diameter. Stage on plates, stalks uppermost.

Sweet Corn: Cobs should be cylindrical with green husks and 'silks' retained. Keep 2.5cm stalk. One or two husks should be pulled down and neatly tucked under the cob. This enables the judge to see the colour and

condition of the grain which should be fully set and in straight rows.

Collections: Stage within the space allowed. Judges will look at the condition and uniformity of all exhibits.

Finally: Check your entries accord with the schedule and ensure you leave the correct entry card against the exhibit

SECTION B - VEGETABLES

Where possible, please state the variety of vegetable

Place exhibit on a plate or similar.

Class

- | | | |
|-----|--------------|--|
| 29. | Potatoes | 3 of one white variety |
| 30. | Potatoes | 3 of one coloured variety |
| 31. | Runner Beans | 6 |
| 32. | French Beans | 6 - dwarf |
| 33. | French Beans | 6 - climbing |
| 34. | Onions | 3 - trimmed to pass through 7.5cm ring |
| 35. | Onions | 3 - large, trimmed |
| 36. | Garlic | 2 - matching bulbs, any variety other than elephant garlic, 2.5cm stem |
| 37. | Carrots | 3 - long tapering, foliage trimmed |
| 38. | Carrots | 3 - other than long, foliage trimmed |
| 39. | Beetroots | 3 - foliage trimmed |
| 40. | Rhubarb | 3 stalks, leaf trimmed to 7.5cm |
| 41. | Courgettes | 2 - matching pair, approximately 15cm long with or without flowers |

SECTION B – VEGETABLES (continued)

Where possible, please state the variety of vegetable

Place exhibit on a plate or similar.

Class

- | | | |
|-----|--|--|
| 42. | Cucumber | 1 fruit, outdoor grown |
| 43. | Cucumber | 1 fruit, greenhouse or polytunnel grown |
| 44. | A pot of “cut and come again” lettuce | 30 cm pot max |
| 45. | Chilli peppers | 2 - matching pair |
| 46. | Sweet pepper | 1 |
| 47. | Tomato | 1 large (e.g. beefsteak) |
| 48. | Tomatoes | 3 - of a standard variety |
| 49. | Tomatoes | 9 - small fruited, not plum |
| 50. | Tomatoes | 9 - small fruited, plum |
| 51. | A complete truss of tomatoes | |
| 52. | Any vegetable not previously mentioned | Exhibitors are encouraged to show lesser-known kinds |
| 53. | Collection of vegetables | 3 kinds, displayed, can include any of the above. Exhibit may be staged on bench or board 60cm width max |
| 54. | Collection of culinary herbs | At least 4 kinds in a vase, named (no flowers) |
| 55. | Herb growing in a pot | 20 cm pot max |

The Antiques Shop

Enquiries: Tel. 01749 813264

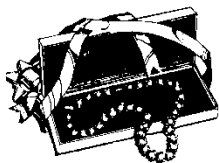
5 High Street, Bruton, BA10 0AB

Open - Thu Fri Sat - 10am to 5:30pm

Dealing in: furniture, jewellery,
collectables and decorative art

Established 1976

Michael Wren & David Gwilliam



Otter Garden Centres

Proud to work in partnership
with gardeners, nature & the community



Credit: Samuel North

Enjoy the very best of gardening, home and leisure at
one of our eight family-run garden centres.

Find top quality home-grown plants from our nurseries,
shop our wide range of products and relax in one of our coffee shops.

Your local Otter Garden Centres:

WINCANTON Bruton Road, Wincanton, BA9 8HA

OTTERY ST MARY Gosford Road, Ottery St Mary, EX11 1LZ

Also find us at **JACK'S PATCH, PLYMOUTH,**
TORBAY, TAUNTON, WHITCHURCH & LYMINGTON



www.ottergardencentres.com


otter
your garden. your home.



Mugs, jugs and more available from Richard Pomeroy Porcelain

Visits by appointment to the Pottery in Patwell Lane, Bruton,
are welcome.

www.richardpomeroyporcelain.com
richardpomeroy100@gmail.com



Home To Wanstrow's Independent Shop & Café

Rare Breeds Farm Park

Monday-Saturday 9am-6pm

Sunday 10am-4pm

Now also home to Frome Weavers Spinners & Dyers workshop
www.fromeweavers.org.uk

Station Road | Wanstrow | Between Bruton and Frome | BA4 4SZ
01749 850 361 | www.redwoodrarebreeds.co.uk



PIPPINS

Luxury self-catering accommodation
½ mile from Bruton

Find us on Airbnb or message Helen
on 0779 175 5626

SECTION B – VEGETABLES (continued)

Where possible, please state the variety of vegetable

NOVELTY CLASSES

Class

56. Most unusual, shaped fruit or vegetable
57. Heaviest Potato
58. Longest Runner Bean
59. Heaviest Onion
60. Heaviest Marrow / Courgette
61. Tallest weed (not a climber)
62. Smallest ripe tomato



**Summer
Holiday
Fun!**

 **MILL ON THE BRUE**
outdoor activity centre

Bruton, Somerset BA10 0BA
01749 812307
www.millonthebrue.co.uk

FRUIT

Preparation

The specialist would say that preparation begins at planting with choice of variety, but most people are probably blessed with gnarled old apple trees and unpredictable plums, which are likely to be beyond spraying and pruning in a small garden.

If there has been a good set of fruit, thinning is the most useful thing to improve quality. Start thinning apples and pears in early July after the 'June drop' and aim for final spacings of dessert apples one fruit per cluster, 10-15cm apart, and cooking apples one fruit per cluster, 15-22.5cm apart. Pears need less thinning, to not more than two per cluster. For plums, thin first when the size of hazel nuts, and again when twice this size, aiming for fruits 7.5cm apart. Use scissors or secateurs.

Protection against birds and wasps is important. The best solution is to put perforated polythene bags over selected fruits. Avoidance of over-shading by removing or tying back foliage will let in sunshine and aid even colouring.

Many kinds of soft fruit have finished by the Show date, but there are some fine varieties of later raspberries and strawberries well worth growing for quality and showing. Protect with netting. In dry seasons these later soft fruits will require regular watering.

Picking

Pick as near to show time as possible. Currants should be picked with the strings intact, choosing the longest strings with the largest fruits. Melons, and grapes in the bunch should be picked and shown with the stalk intact. It is easier to use scissors rather than fingers. When handling, try to avoid spoiling the bloom. All fruit, except apples, pears and gooseberries should be just ripe. Apples, pears and gooseberries may be shown under-ripe, but the judge should give preference to varieties in season rather than others. The general expectation is that fruits shown, except dessert apples, should be slightly above average size; enormous specimens are not wanted. For dessert apples, fruits may be a little above or a little below the ideal size of 7cm.

Staging

Aim to present a neat attractive, exhibit, symmetrical if possible. Do not polish the fruits; keep the bloom. Stage apples with the eye uppermost, and pears and similarly shaped fruits (e.g. figs) around the plate with the stalk to the centre. Arrange other, smaller fruits in rows across the plate with stalks pointing away from the front.

Finally, before you leave

Check the entries accord with the schedule and ensure you leave the correct entry card against the exhibit.

SECTION C - FRUIT

Where possible, please state the variety of fruit

Place exhibit on a plate or similar.

Class

- | | | |
|-----|-------------------------|--|
| 63. | Apples | 5 dessert |
| 64. | Apples | 5 cooking |
| 65. | Pears | 3 |
| 66. | Blackberries | 20 in a dish |
| 67. | Plums | 6 |
| 68. | A dish of stone fruit | Not plums. A reasonable quantity e.g. damsons - 9, apricots - 3 |
| 69. | Raspberries | 20 in a dish |
| 70. | Dish of any other fruit | A reasonable quantity e.g. figs - 3 |
| 71. | Collection of fruit | A presentation of 3 kinds of fruit, can include any of the above |

Note: Except for class 71, a fruit exhibit should be of one variety. Removal of stalks will disqualify.

BRUTON COUNTRY CENTRE

www.bruton-country-centre.co.uk
01749 812743
Outdoor Aquatics • Pet Foods and Accessories •
Plants • Composts • Tools • Fencing • Aggregates

**Large selection of seasonal goods
for the garden and home**

Household Fuels • Plumbing and Electrical Items
Hardware and Ironmongery •
Decorating and Cleaning Supplies • Wild Bird Seed and Feeders



Members of Bruton & District Horticultural Society receive a 10% discount on any gardening products, plants, compost etc at Bruton Country Centre on production of their 2026 membership card prior to purchase.

**BRUTON & DISTRICT
HORTICULTURAL SOCIETY
2026**

ENTRY FORM

(Pull out this form from your schedule)

Your Mini Saga Entry

(Note: only one entry per person; do not give your name below)

Title:

Saga:

ENTRY FORM
BRUTON & DISTRICT HORTICULTURAL SOCIETY
101st ANNUAL SHOW – 22nd AUGUST 2026

Complete this form and place it in an entry box at either:
The Community Office, Dovecot Buildings, High Street, Bruton or
Bruton Country Stores, Wisteria Yard, Bruton

Entry boxes will be in place from Monday 27th July and
close at **12.00 noon** on Wed 19th August.

**ENTRIES MUST BE PLACED IN THE BOXES PROVIDED OR SCANNED AND
EMAILED TO info@BrutonHorticultural.org.uk ****

Photocopies are accepted. Additional entry forms can be downloaded
from www.brutonhorticultural.org.uk

Name: (BLOCK CAPITALS)	
Age: (if under 12)	
Address:	
Tel. No:	
E-mail:	

I agree to abide by the Show Rules set out in this Schedule.

Signed:

Are you a member of Bruton Horticultural Society?

[] Yes [] No

*** Mini Sagas (class 80) can be emailed directly ensuring that you include the above contact details.*

Class 80 - MINI SAGAS

A mini saga must be a complete fictional tale with a beginning, middle and end, and something happening - not simply description or rumination. Its length must be exactly 50 words, plus a title of up to 15 words. Hyphenated words count as one. Several examples are shown below. You'll see that each is exactly 50 words long.

There is no theme for the sagas, so indulge your imagination.

To give us more time to judge them, please write your mini saga in the space on the front page of the entry form (page 19) and hand it in by the Wednesday deadline before the Show. **(Note: only one Mini Saga per entrant.)**

2025 winners:

FIRST: The Dragon Awakens - A Saturday Morning Saga

An eyelid drags open, pupil fixating on the intrusion. From deep within, a sulphur-infused exhale engulfs the bite-sized visitors.

They tentatively step toward the slumbering beast.

"Is it...breakfast time?" they stammer. A pause follows, more deadly than the question itself.

Then... the growl.

Grins celebrate their completed mission: Mum's awake.

SECOND: Travelling Home in Time for Tea

She wakes and smiles as I arrive. Where has she been since last time? America? With a return ticket in her shoe, used when they gave all her clothes away. Four years of waiting alongside the dreaming others, as the care home door snaps open and shut, open and shut.

THIRD: The Prickly Pair

It was a moonlit August night when I heard a hissing noise coming from the garden. I opened the back door quietly, curiously, walking towards the sound. Something I had not seen before, two creatures' nose-to-nose, shuffling side-to-side, advancing, retreating, as if in a Mexican stand-off. The prickly pair. Hedgehogs!

Next year?

SECTION D - FLOWER DECORATION

Class

72. **Pollinators Picnic** An exhibit of mixed flowers and foliage celebrating pollinators. Max 60cm width, and depth unlimited height, accessories allowed
73. "Nature's delights" An exhibit to include flowers and foliage from gardens or hedgerows. Max 45cm width and depth, unlimited height
74. "Supermarket challenge" The best arrangement you can make from a supermarket / petrol station bunch of flowers , maximum spend £7.50. Accessories and foliage. allowed. Max 60cm width, and depth, unlimited height
75. Table centre piece An exhibit of flowers and foliage, accessories allowed. Max 30cm diameter
76. **A floral arrangement in a recycled container** Max 25cm width & depth, 37cm high

Exhibits will be staged on tabling covered in black cloth. The exhibits will be judged according to the NAFAS Competitions Manual 4th Edition 2023.



A warm welcome awaits you at

The Sun Inn Bruton

Home cooked Sunday roast
Served with seasonal veg and locally sourced produce
Lunch 12 noon – 2.30pm; Dinner 6.00 – 9:30pm
Authentic Persian cuisine, all home made by our Persian chef (evenings only)

01749 813493 thesuninnbruton@yahoo.co.uk

TROPHIES AND PRIZES TO BE AWARDED		WINNER 2025
Section A - Flowers		
Rosemarie Paul Memorial Cup	Best exhibit of annual flowers (class 3)	Janet Jones
A S Windmill Cup	Best exhibit in the pot plant classes (classes 24-25)	Diana Clothier
Gardens Group Voucher	Best Fuchsia (class 26)	Penny Mitchell
		<i>Best Geranium - Lin Handley</i>
Idwal and Elsie Roberts Bowl	Best exhibit (classes 1-2, 4-23)	Celia Jennings
Peggy Shingler Memorial Cup	Exhibitor gaining most points in the Rose classes (classes 10-12)	Ellen Styles
Society Cup	Exhibitor gaining most points (classes 1-26)	Neil Parfitt
Section B - Vegetables		
Jonathan Hatcher Cup	Best exhibit (Classes 29-52, 54-62)	Martin Jennings
Goodland Rose Bowl	Best collection of vegetables (class 53)	Neil Parfitt
Johnny Neugasser Cup	Exhibitor gaining most points (Classes 29-62)	Marcus Giles
Section C – Fruit		
Davis Cottagers' Cup	Best exhibit (classes 63-71)	Flora Rawlingson Plant
John Windmill Cup	Exhibitor gaining most points (classes 63-71)	Flora Rawlingson Plant
Banksian Medal - Exhibitor gaining most points in sections A, B and C (classes 1-27, 30-71)		Susan Marlow
Section D - Floral Decoration		
Bill Chidgey Shield	Best exhibit (classes 72-76)	Heather Sanders
Olivia Sale Cup	Exhibitor gaining most points (classes 72-76)	Diana Clothier

TROPHIES AND PRIZES TO BE AWARDED		WINNER 2025
Section E - Handicrafts and Hobbies		
Chidgey Cup	Best exhibit (classes 77-91)	Mary Aston
Challenge Cup	Exhibitor gaining most points (classes 77-91)	Ellen Styles
Section F - Photography		
Diamond Jubilee Cup	Best exhibit (classes 92-99)	Colin Dewsbury
Cash prize - £10	Best exhibit (class 99)	Colin Dewsbury
Henry Fair Trophy	Exhibitor gaining most points (classes 92-99)	Colin Dewsbury
Section G - The Kitchen		
Otter Nurseries Voucher	Best exhibit (classes 100-119)	Helen Parker
Leslie Challenge Cup	Exhibitor gaining most points (classes 100-119)	Eleanor Yeoman
Section H – Children		
The Jubilee Shield	Best exhibit in children's classes 120- 122	India Goodland
John Staite Cup	Best exhibit in children's classes 123- 125	Dylan Hogarty
L J Viney Challenge Cup	Best exhibit in children's classes 126- 128	Cleo Henry
Cash prize - £10	Best exhibit in children's classes 129- 132	Islay Rawlingson Plant
RHS Junior Competitors Award	Best overall effort (classes 120-132)	Amelie Hogarty
The President's Cup - An exhibit of special merit selected by the President from all sections		Martin Jennings

England's Cheddar makers



Proud to support
Bruton Horticultural Society



ELLISCOMBE HOUSE

LUXURY RESIDENTIAL & NURSING CARE
IN AN ELEGANT COUNTRY SETTING

01963 32746

www.elliscombehouse.com

Higher Holton | Wincanton | BA9 8EA



Committee and Judges 2025

Galhampton Shop & Country Store

Animal Feeds and Bedding
Timber Supplies | Tools | Hardware
Gardening | Workwear | Logs and Gas
Local Food | Home Essentials

Open 7 days a week
Mon-Sat 7.30am – 5.30pm | Sun 10am – 4pm
01963 440464



*Family-run, rural country store on A359
between Castle Cary and Sparkford*

Fir Tree Business Park, High Road,
Galhampton, Somerset, BA22 7BH
sales@galhamptoncountrystore.co.uk



SECTION E - HANDICRAFTS and HOBBIES

Where appropriate, please state the medium / media used

Class

77. **An edible insect** **Made from any vegetable or plant material, may include cocktail sticks max height 45cm, max depth and width 30cm**
78. An invitation or greetings card Hand made
79. **A limerick** **'We thought the rain would never stop'**
A5 size paper
- Limericks to be submitted on show morning; your name should not be shown*
80. A mini saga See back page of entry form (page 19) for details; Your name should not be shown against your saga
81. A knitted or crocheted article
82. A tapestry or cross-stitch item from a kit
83. An article of patchwork, needlepoint, tapestry, weaving, collage, lace or hand produced felt
- For any items larger than 45cm, please indicate size on entry form.
84. **Hand-made bag** **Must be usable**
85. New from old A new item made from an old one
Please state the item's previous use
86. **A furry friend** **Max height 45cm, max depth and width 30cm**
87. **A decorated tealight holder** **Can hold 1 – 4 tealights**
88. A miniature garden 30cm x 30cm max.
89. **A decorative tee shirt** **Any size, any medium**
90. An original painting In any medium, max 60cm x 60cm, so able to be hung on display
91. An original drawing In charcoal, pen and ink, or pencil, max 60cm x 60cm, so able to be hung on display

SECTION F - PHOTOGRAPHY

Class

92. **Natures Patterns (eg. Spirals, textures etc)**
93. **Sport anything from cricket on the beach to Wimbledon**
94. **Trees (living or dead)**
95. **Visitors to your garden**
96. **Out in the sun**
97. **Seeing red**
98. **At work**
99. Front cover for “The Dove” a black and white photo suitable for using as a cover for The Dove magazine, this needs to be of high resolution and a strong image linked to one of the monthly editions.

Note: Photographs must be no larger than 20.5cm x 15cm, mounted on backing board 25cm x 20cm max for display, with entry card attached. Coloured backing board looks attractive.

 <p>POST OFFICE</p> <p>Premier</p> <p>Bruton Convenience Store</p> <p>23 High Street, Bruton, BA10 0AH</p> <p>Shop 01749 812308 Cafe 07300 868555</p>	<p>Your one-stop shop for Groceries, Organic treats and Post Office</p>  <p>वेहडो कर्फे</p> <p>Enjoy authentic Indian cuisine at Desi Café, serving delicious taste of India right here in Bruton</p> <p>Visit us today Quality, Convenience and Great Food!</p>
--	---

SECTION G - THE KITCHEN

Class

100. **Hand-made wholemeal loaf made with 400g flour**
101. **5 plain scones - using a 5cm cutter**
102. **A cake containing any vegetable**
103. **A Victoria Sponge**
104. **A lemon tart**
105. 5 sweet muffins
106. **5 pieces of shortbread**
107. **5 cheese savouries**
108. **5 mini pizzas – 10cm/4” each**
109. **5 mini meringues – 6cm each approximately**
110. 5 brownies

ALL THE ABOVE FOOD EXHIBITS MUST BE COVERED WITH CLING FILM

Section G (The Kitchen) continues on page 32



BAILEY HILL BOOKSHOP

We value customers of all ages and well-behaved dogs


Making the perfect match between book and customer since 1980

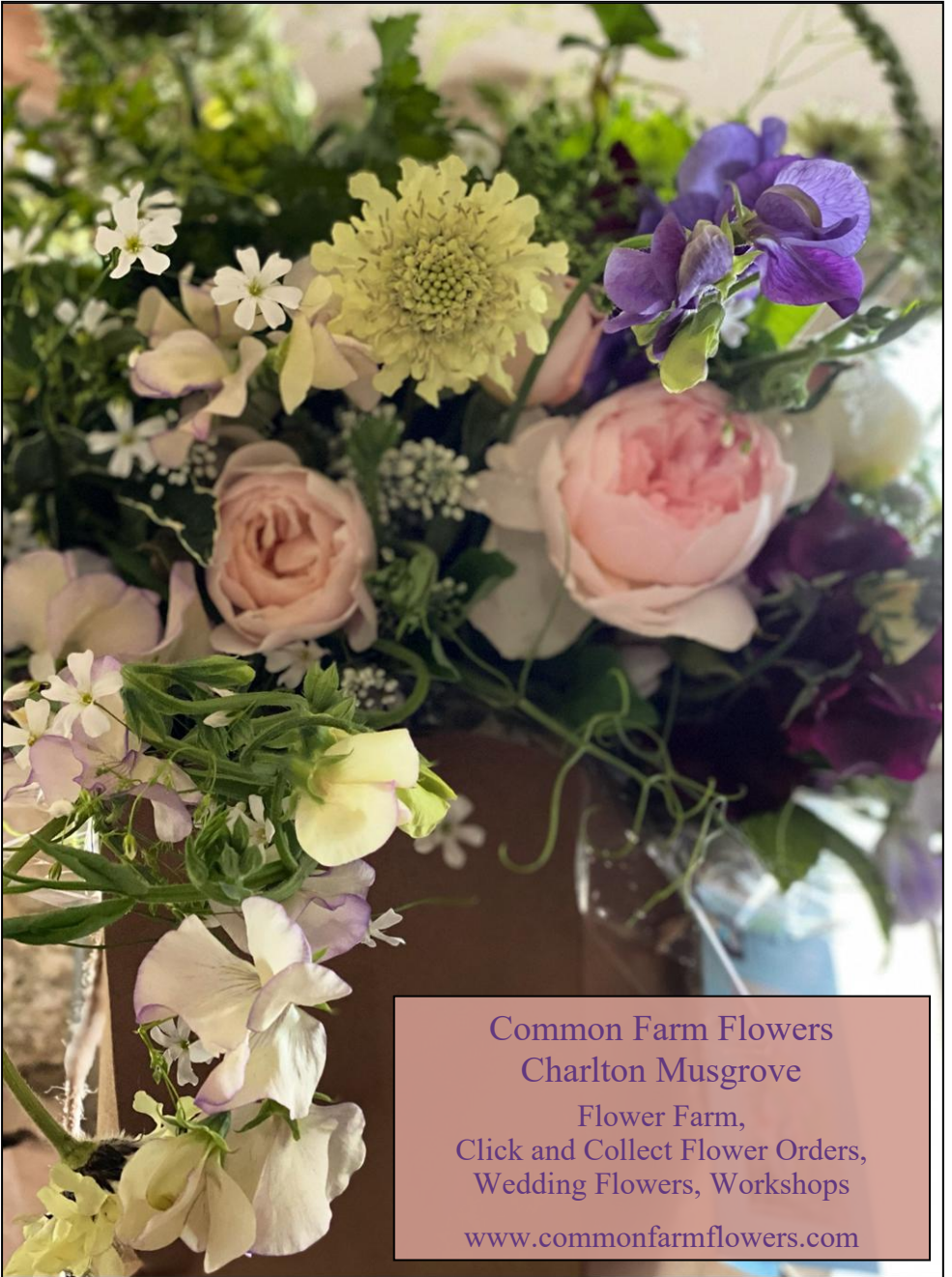
Fore Street Castle Cary BA7 7BG
01963 350917 ~ bhbsnews@gmail.com ~ baileyhillbookshop.com

SECTION G - THE KITCHEN - CONTINUED

Class

111. **A jar of blackberry jam**
112. **A jar of jam (not blackberry)**
113. A jar of Seville orange marmalade
114. A jar of chutney
115. A jar of honey
116. A small bottle of salad dressing
117. 5 hen or duck eggs
118. Home-made cordial - one 75cl bottle (clear glass)
119. Home-made fruit spirit (e.g. sloe gin, plum brandy, etc)

	STRIPY DUCK cafe & bookshop	Delicious Gluten free cake Eclectic collection of books & book talks Games Easy atmosphere 35 High Street BRUTON Monday to Sunday 10-5 (7 days a week) @stripyduckbookshopcafe 01749 814814
--	---	---



Common Farm Flowers
Charlton Musgrove
Flower Farm,
Click and Collect Flower Orders,
Wedding Flowers, Workshops
www.commonfarmflowers.com

SECTION H - CHILDREN

Class

Group 1: open to all children under 7 on Show Day

- 120. Anything I have painted / drawn (A3 size max)
- 121. Anything I have made – e.g. a Lego model, a handicraft item, a cake / edible item
- 122. Anything I have grown – flowers, vegetables or fruit

Group 2: open to all children under 10 on Show Day

- 123. Anything I have painted / drawn (A3 size max)
- 124. Anything I have made – e.g. a Lego model, a handicraft item, a cake / edible item
- 125. Anything I have grown – flowers, vegetables or fruit

Group 3: open to all children under 12 on Show Day

- 126. Anything I have painted / drawn (A3 size max)
- 127. Anything I have made – e.g. a Lego model, a handicraft item, a cake / edible item
- 128. Anything I have grown – flowers, vegetables or fruit

Group 4: open to all children under 16 on Show Day

- 129. An arrangement of flowers or foliage in a 454gm jam jar
- 130. A handicraft item e.g. an article of patchwork, needlepoint, tapestry, weaving, collage, lace or hand produced felt
- 131. 3 decorated cup cakes
- 132. A photograph I have taken with a caption*

* Photographs must be no larger than 20.5cm x 15cm, mounted on backing board 25cm x 20cm max for display, with entry card attached. Coloured backing board looks attractive.

SAVOUR ^{the} SPIRIT of SOMERSET



GODMINSTER FARM

GLASTONBURY TOWER



BRUTON DOVECOTE

the GODMINSTER OAK

Explore the range in our Bruton Shop
or visit www.godminster.com



KING ALBERTS TOWER

RIVER BRUE

PROGRAMME FOR 2026

Wednesday, 13 th May, 2.30pm	Longstock Park Water Garden, Stockbridge Hampshire SO20 6EH
Wednesday, 10 th June, 2.30pm	Karmacations, Buckland Newton
Monday, 22 nd June, 6pm	Members' Garden Social, Wellspring Cottage BA7 7LL (Alternative bad weather date – Thursday, 25 th June)
Friday, 15 th July 2.30pm	Stoberry House, Stoberry Park, Wells BA5 3LD
August	Ad hoc garden visit to be arranged near the time according to weather, via WhatsApp or phone/email
Saturday, 15 th August, 2.30pm	Annual Show, Fitzjames Hall, Kings School, Bruton
Wednesday, 16 th September, 2.30pm	Empire Farm, Throop Road, Templecombe, Somerset BA8 0HR
Monday, 21 st September	Castle Gardens Gold Club talk on 'Putting your garden to bed for the winter'
Monday, 19 th October	Chris Smith of Pennard Plants talk on 'Growing unusual edibles'
Monday, 16 th November	Myra Cox's talk on 'Plants and flowers for Christmas'
Monday, 18 th January 2027	AGM and talk/Saturday, January 23 rd Winter Lunch – both TBC

Talks are held at Bruton Community Hall (opposite the Church). Free tea / coffee and biscuits from 7.15pm for a 7.30pm start. Reminder details will be issued prior to each event.

For just £8 a year you can become a member of the Bruton & District Horticultural Society and enjoy a full programme of talks and visits. Full details at: www.brutonhorticultural.org.uk

COMMITTEE

President	Alison Bleasdale
Chair, membership, visits admin and website	Janet Jones
Vice Chair, visits, seed orders	Deborah Gibson
Secretary and publicity	Jane Hodges
Treasurer	Hugh Wauton
Speakers	Caroline Rathbone
Raffle	Felicity Smith
Refreshments	Sarah Waller
Show team	Anne Jelliffe
Show team	Helen Parker
Show team	Deborah Duffy
Vacancy	x2

JUDGES

Flowers and Novelty Vegetables	Aizel Finch, Taunton
Vegetables and Fruit	Mr Sidney Painter, Broadway
Flower Decoration	Dr Francis Burroughes, Alvington, Yeovil
Handicrafts and Hobbies	Ms Chrys Henning, Alhampton
Mini Sagas and Limericks	Mr Peter Sheldon, Batcombe
Photography	Mr Lachlan Fraser, Cucklington
The Kitchen	Mr Ian Forbes, Bruton
Cordial and Spirits	Mr Colin Juneman, Bruton
Children	Mrs Mary Aston, Bruton

RULES

1. The Show will be governed in the main by the R.H.S. Show Handbook, which can be examined on application to the Secretary.
2. Entries will be taken as detailed on entry forms. No entry fees to exhibit are payable. No entries will be accepted after the times shown on the entry form.
3. The number of entries an exhibitor may make in any one class is restricted to two (the first entry will have a suffix a and the second, suffix b) except one for the Mini Saga. Only one prize will be awarded per exhibitor per class.
4. All exhibits must be the bona fide property of, cultivated or made (except section D) by the exhibitor and not previously exhibited at this show.
5. Class cards are issued when exhibits are staged and must be placed with each exhibit (name hidden). Exhibitors are encouraged to label horticultural exhibits with the name of the variety.

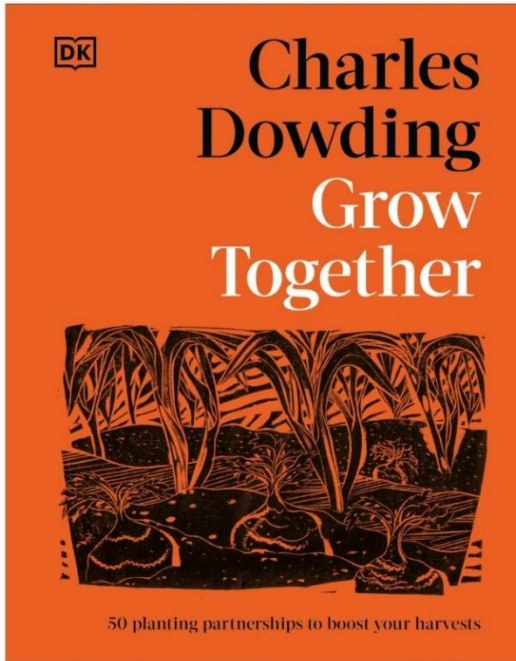
RULES CONTINUED

6. Exhibits, including limericks, may only be submitted at the times shown. The exception is Mini Sagas, which must be submitted with the entry form.
7. Staging of exhibits may commence at 8.30am and must be completed by 10.30am on the day of the show, when all but the judges and officials must leave the hall. Exhibits and prize cards must remain on display until the Show closes at 5.00pm. The Committee will dispose of any exhibits not collected.
8. The Committee will not be responsible for any loss or damage to exhibits before, during or after the Show, but all reasonable care will be taken.
9. Judges may withhold prizes where the standard is too low, or where there are insufficient entries.
10. Notice of any objection to an exhibitor or exhibit is to be made in writing and handed to the Secretary before 3.00pm on the day of the Show.
11. The Committee shall have the power to decide all matters not provided for in these rules and on all matters on which there is any question, and their decision shall be final.
12. Points for Challenge Cups are awarded as follows:

3 points	-	1 st prize
2 points	-	2 nd prize
1 point	-	3 rd prize

except for Classes 1, 53 and 71 which are awarded double points. Classes 56-62 are only awarded a 1st prize (3 points).
13. All cups and trophies shall remain the property of the Society and will be held by the winners for one year only, to be handed back clean and in sound condition by 31st July 2026.
14. In the event of a tie for a cup, the number of 1st, 2nd and 3rd places will be considered to determine an overall winner.
15. The Banksian Medal will be awarded to the winner of the highest number of place points in sections A, B and C. The competitor who won the medal in 2024 or 2025 will not be eligible for the Medal this year. Similarly, the winners in 2025 of the Society Cup, the John Windmill Cup or the Johnny Neugasser cup will not be eligible this year.

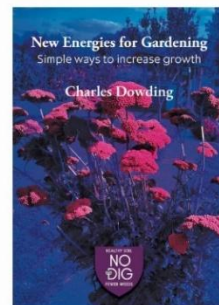
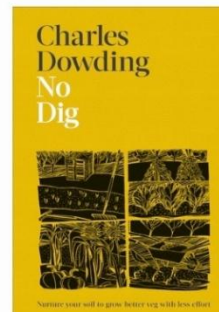
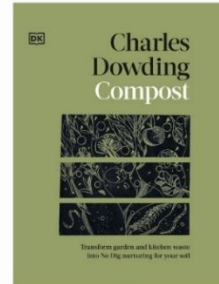
New title by Charles Dowding



Getting the most from a veg patch is what all gardeners want. With a little forethought and planning, an approach that places different crops together, and in closer proximity than you might imagine, means you can grow more plants in the same area while creating healthy and beneficial plant communities.

See Charles's website for details about these methods, and the books and courses he sells.

www.charlesdowding.co.uk



HAUSER & WIRTH
SOMERSET

**HOME TO EXHIBITIONS,
EVENTS, LEARNING, FOOD
AND ARTIST RESIDENCIES**

DURSLADE FARM, BRUTON
SOMERSET BA10 0NL

Oudolf Field, Hauser & Wirth Somerset. Courtesy: Hauser & Wirth. Photo: Jason Ingram