

Bruton & District Horticultural Society



**Celebrating 100 years of
Bruton & District Horticultural Society's
Annual Show in 2025**

Show Schedule

Saturday 16th August 2025

Sports Hall, King's School, Bruton

Staging Exhibits starts at 8:30am

Staging finishes at 10:30am

Doors open 2:30pm

Presentation of prizes at 4:30pm

Admission £2 - Children and members free

www.brutonhorticultural.org.uk



**AWARD-WINNING
GARDEN CENTRES,
RESTAURANTS
AND FARM SHOP**

Two year hardy plant guarantee
Tree planting
Garden advice and design
Plant loan
Hanging basket planting
Container planting

Free eco-friendly gift wrapping
Free delivery within 25 miles


**THE
GARDENS
GROUP**

CASTLE | BRIMSORE | POUNDBURY

BRIMSORE GARDENS

Tintinhull Road, Yeovil BA21 3NU
Tel: 01935 411000

CASTLE GARDENS

New Road, Sherborne DT9 5NR
Tel: 01935 814633

POUNDBURY GARDENS

Peverell Avenue, Poundbury DT1 3RT
Tel: 01305 257250

OPEN 7 DAYS A WEEK

www.thegardensgroup.co.uk



PRESIDENT'S PREFACE

For the 100th time, people in Bruton and round about have been checking out their flowerbeds and vegetable plots to see what would be at its best at showtime. For the 100th time cooks have been baking, crafters and artists have been busy, writers have been chewing their pencils awaiting inspiration, smartphones and cameras have been put to use, all to make a fine display at the Bruton show.

We know that this is our 100th show but the Society is a little older as some years were missed in wartime. The show has changed over the years. 75 years ago it included a gymkhana, a fair, musical chairs, cycle and motorcycle events, children's races, and a skittles competition. The show classes included fruit, flowers, vegetables, eggs, dead poultry, handicrafts, handwriting, honey and budgerigars.

We have a proud tradition to look back on and hope to make this year's show once again an event to remember. It would be wonderful to have a record number of entries in this special year (if the weather is kind to us). Every year folk come to the show, look at the exhibits and realise they have at home something just as good, or even better. Do please bring them in this year. It is so easy to enter. You have the show schedule. Just have a guess at what will be looking good at showtime, then complete the entry form and drop it off in good time. You will be contributing to a fine display for everyone else to look at. It is real thrill if you get one of the coveted prize cards, after the judging. I still use my red first prize card from last year as a book mark.

Alison Bleasdale, President Bruton Horticultural Society

ACKNOWLEDGEMENTS

The Society is most grateful for the support and help received throughout the year. A special mention is appropriate for those who make this show possible. We thank the Headmaster and Governors of King's School for allowing the use of the Hall, not only on the day of the Show but for the two days before it. We are indebted to the local businesses advertising in this schedule, we hope that these businesses in turn benefit. We are also indebted to Sexey's School for printing this show schedule and special thanks go to Battens Solicitors who have once-again sponsored the printing of the schedule.

Guidance for exhibitors
Classes in bold print are new classes for 2025

FLOWERS

Preparation before cutting

Decide what you will show 2 or 3 weeks beforehand and in dry weather keep the soil moist by generous watering. The main flowers of a stem can be aided by removing weak side shoots. Protect from heavy rain and splashing of soil. Check that the staking of tall plants is secure. If pot plants are growing strongly, give them plenty of room, turning the pots often to avoid lopsided growth.

Cutting

Check how many blooms are required, and allow one or two extra in case of damage. Select flowers that are fresh, free from damage due to weather, pests or disease, undeveloped blooms and ones past their peak. On branched stems or sprays a good proportion of flowers (say two thirds) should be 'out'.

Cut on the evening before the show when the flowers/foilage are cool. Stems should be cut long and placed in a bucket of water at once. Slanting cuts aid the uptake of water. Remove unwanted side shoots and lower leaves. Leave overnight plunged in clean water up to their necks in a cool position.

Staging

Remove any florets or foliage damaged on the way to the show. To assist continued uptake of water, recut the base of all stems, making sure that the length retained is right for the size of vase. Exhibits in these classes are not 'arrangements' as such but the judge will be influenced by attractive presentation and the exhibit that displays flowers to the best advantage will make the more favourable impression.

Strive for a balanced exhibit, with your flowers of even size and quality, and in containers of the right proportion. There is nothing against wedging stems in a vase to give stability, providing it is done inconspicuously. Do not allow foliage to show if it is from plants not being exhibited. It adds to the interest if you can label the entry neatly with the name of the variety.

Finally before you leave

Ensure pot plants have enough water to see them fresh through the show and home again.

Check vases have enough water and are stable, and the entries accord with the schedule (numbers of blooms especially). Make sure you leave the correct entry card against the exhibit.

SECTION A - FLOWERS

Where possible, please state the variety of flower

Class

- | | | |
|----|--------------------------|--|
| 1. | “Milk to butter” | Collection - 4 or more kinds of white and pale yellow flowers |
| 2. | Vase of hardy perennials | At least 4 kinds, 50cm wide max. may include shrubs |
| 3. | Vase of annual flowers | Any varieties, 50cm wide max |
| 4. | Phlox | 3 stems, any varieties |
| 5. | Clematis | 1 specimen bloom in small container |
| 6. | Dahlias | 3 cactus, any varieties |
| 7. | Dahlias | 3 any one variety other than cactus |
| 8. | Dahlia | 1 specimen bloom, 15cm dia max |
| 9. | Dahlia | 1 specimen bloom, over 15cm dia |

Section A continues on page 9





Battens
SOLICITORS

Proud to sponsor the Bruton & District Horticultural Society Show

 Your local office is Castle Cary

 www.battens.co.uk  0800 652 8373



Battens
CHARITABLE TRUST

40 YEAR
ANNIVERSARY

Supporting the local community since 1985



YOUR LOCAL WINE SHOP

Mixed case discounts & free delivery available.

Find us next to Station Road car park in Bruton.

OPEN Tuesday - Saturday from 10am - 6pm

— THE —
CELLARHAND

thecellarhand.co.uk | info@thecellarhand.co.uk
01749 684767 | BA10 0EH



BRUTON MOTOR SERVICE LTD

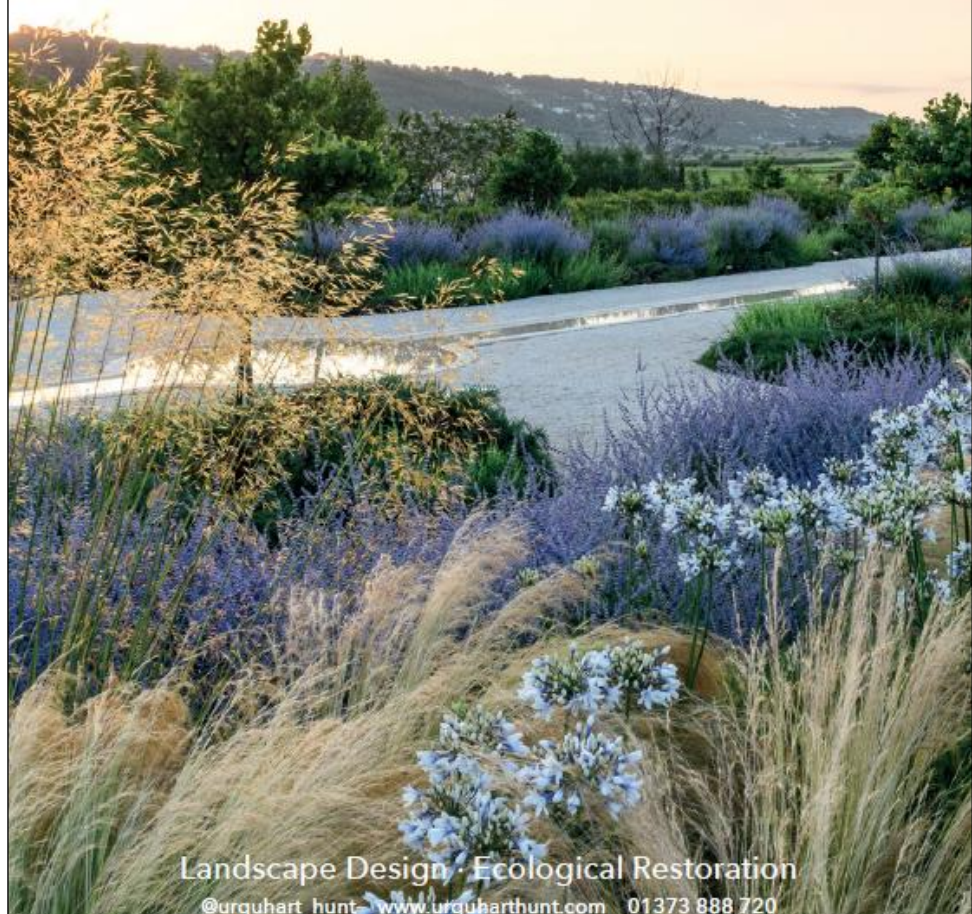
**Bruton Industrial Estate
Station Road
Bruton BA10 0EH**

- **MOT's for all Vehicle Makes & Models**
- **Servicing & Repairs of all Makes & Models**
- **Tyres - Exhausts - Brakes - Suspension**
- **Breakdown & Recovery**
- **Local Collection & Delivery Service**



Rob Mahoney
Tel: 01749 812992
Mob: 07976 401432

URQUHART & HUNT



Landscape Design · Ecological Restoration

@urquhart_hunt www.urquarthunt.com 01373 888 720

SECTION A - FLOWERS (continued)

Where possible, please state the variety of flower

Class

- | | | |
|-----|--|--|
| 10. | Roses | 3 specimen blooms, any varieties |
| 11. | Rose | 1 single bloom |
| 12. | Rose | 1 stem, multiple blooms |
| 13. | Crocsmia | 3 stems, any varieties |
| 14. | Penstemons | 3 stems, any varieties |
| 15. | Gladiolus | 1 spike |
| 16. | Sweet Peas | 5 stems |
| 17. | Collection of dried seed heads | |
| 18. | Fuchsia | 6 flower heads, any mix, displayed in a flat container |
| 19. | Pansies or violas | 6 flower heads displayed in a bowl of water, 20cm max |
| 20. | Vase of 5 stems of 1 kind of flower not previously mentioned | |
| 21. | Collection of cut miniature flowers in an egg cup | |
| 22. | Collection of mixed ornamental grasses / sedges | 5 stems |
| 23. | Orchid | Flowering, in a container |
| 24. | One pot plant | Flowering, 20cm pot max, on a saucer |
| 25. | One pot plant | Foliage, 20cm pot max, on a saucer |
| 26. | Fuchsia Dark Eyes |) Grown from a plug plant,
) kindly donated by
) The Gardens Group, |
| 27. | Geranium New Century White |) 20cm pot max
) on a saucer |
| 28. | Most fragrant rose * | 1 single bloom |
| 29. | Most fragrant sweet peas * | 3 stems |

* To be judged by the public on the afternoon of the show

VEGETABLES

Water thoroughly all vegetables you intend to show; leaf vegetables will retain freshness and roots are less likely to be damaged when lifting. Wash root vegetables using a soft cloth or sponge. Select specimens for condition, size, shape, colour, tenderness and uniformity with each other. Display should be one variety in single dishes. These are all assessed by the judge. Size is meritorious, but only if accompanied by quality. Trim the tops of carrots, beetroot, and the like, leaving about 7.5cm of leaf stalk which should then be tied neatly. Remove coloured outside leaves but avoid overdoing it. Stage attractively.

Notes on popular classes

Beans, dwarf or climbing: Straight, fresh snap pods of even length with a stalk and good colour.

Beans, runner: Long, slender, straight pods; condition as above.

Beetroot: Globe type should be spherical, no bigger than tennis ball size, with smooth clear skins and uniform, dark colour, small tap root; long type has broad, clean shoulders tapering evenly.

Cabbage: Solid heart with surrounding leaves and bloom intact; approximately 5cm of stalk.

Carrots: Tender roots of good shape and colour, good size and variety, free from side roots, skins clean and bright.

Courgettes: Young, tender, well matched fruits, colour immaterial but approximately 15cm in length, with or without flowers.

Cucumber: Fresh, young, green, tender and straight fruit of uniform thickness with short 'handle' and flower if possible.

Garlic: Clean off all soil, dry completely. Reduce stem to about 2.5cm. Stage bulbs as complete specimens, do not divide into cloves.

Lettuce: Firm, tender and unbroken hearts of good colour.

Leeks: All parts should be washed. Avoid

excessive stripping of outer leaves. Uniform length, firm and compact. Uniform blanch and no bulbousness at base.

Onions: Firm, thin-necked bulbs, uniform; remove leaves and tie necks neatly.

Peas: Large, well-filled pods, tender seeds; retain 1.5cm stalk and handle by this to keep bloom, hold up to strong light to show any internal damage and reveal number of peas in the pod.

Peas-mangetout: Pods flat with seeds present but undeveloped.

Potatoes: Select well-matched tubers, not more than 175-225g each, clear skins free from blemish, eyes few and shallow, wash carefully.

Peppers and Chillis: Should be of good shape, size and colour with no blemishes

Radishes: Roots should be fresh, firm, medium sized, young and brightly coloured. Foliage should be trimmed to approximately 4cm.

Rhubarb: Take from the garden as grown, not forced. Aim for straight, long, tender stalks with good red colouring. Trim leaves to 7.5cm.

Shallots: Show as separate bulbs not as cluster, dried off and free from staining; cut off root, tie tops neatly; stage on dry sand on a plate and slightly raised in the centre.

Tomatoes: Medium-sized (approximately 6cm diameter) ripe but firm, with stalk (calyx) attached. For small fruited or 'cherry' types, fruit should not be more than 3.5cm diameter. Stage on plates, stalks uppermost.

Sweet Corn: Cobs should be cylindrical with green husks and 'silks' retained. Keep 2.5cm stalk. One or two husks should be pulled down and neatly tucked under the cob. This

enables the judge to see the colour and condition of the grain which should be fully set and in straight rows.

Collections: Stage within the space allowed. Judges will look at the condition and uniformity of all exhibits.

Finally: Check your entries accord with the schedule and ensure you leave the correct entry card against the exhibit.

SECTION B - VEGETABLES

Where possible, please state the variety of vegetable

Place exhibit on a plate or similar.

Class

- | | | |
|-----|--------------|--|
| 30. | Potatoes | 3 of one white variety |
| 31. | Potatoes | 3 of one coloured variety |
| 32. | Runner Beans | 6 |
| 33. | French Beans | 6 - dwarf |
| 34. | French Beans | 6 - climbing |
| 35. | Onions | 3 - trimmed to pass through 7.5cm ring |
| 36. | Onions | 3 - large, trimmed |
| 37. | Garlic | 2 - matching bulbs, any variety other than elephant garlic, 2.5cm stem |
| 38. | Carrots | 3 - long tapering, foliage trimmed |
| 39. | Carrots | 3 - other than long, foliage trimmed |
| 40. | Beetroots | 3 - foliage trimmed |
| 41. | Rhubarb | 3 stalks, leaf trimmed to 7.5cm |
| 42. | Courgettes | 2 - matching pair, approximately 15cm long with or without flowers |

SECTION B – VEGETABLES (continued)

Where possible, please state the variety of vegetable

Place exhibit on a plate or similar.

Class

- | | | |
|-----|--|--|
| 43. | Cucumber | 1 fruit, outdoor grown |
| 44. | Cucumber | 1 fruit, greenhouse or polytunnel grown |
| 45. | A pot of "cut and come again" lettuce | 30 cm pot max |
| 46. | Chilli peppers | 2 - matching pair |
| 47. | Sweet pepper | 1 |
| 48. | Tomato | 1 large (e.g. beefsteak) |
| 49. | Tomatoes | 3 - of a standard variety |
| 50. | Tomatoes | 9 - small fruited, not plum |
| 51. | Tomatoes | 9 - small fruited, plum |
| 52. | A complete truss of tomatoes | |
| 53. | Any vegetable not previously mentioned | Exhibitors are encouraged to show lesser-known kinds |
| 54. | Collection of vegetables | 3 kinds, displayed, can include any of the above. Exhibit may be staged on bench or board 60cm width max |
| 55. | Collection of culinary herbs | At least 4 kinds in a vase, named (no flowers) |
| 56. | Herb growing in a pot | 20 cm pot max |

The Antiques Shop

Enquiries: Tel. 01749 813264

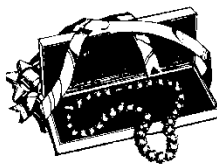
5 High Street, Bruton, BA10 0AB

Open - Thu Fri Sat - 10am to 5:30pm

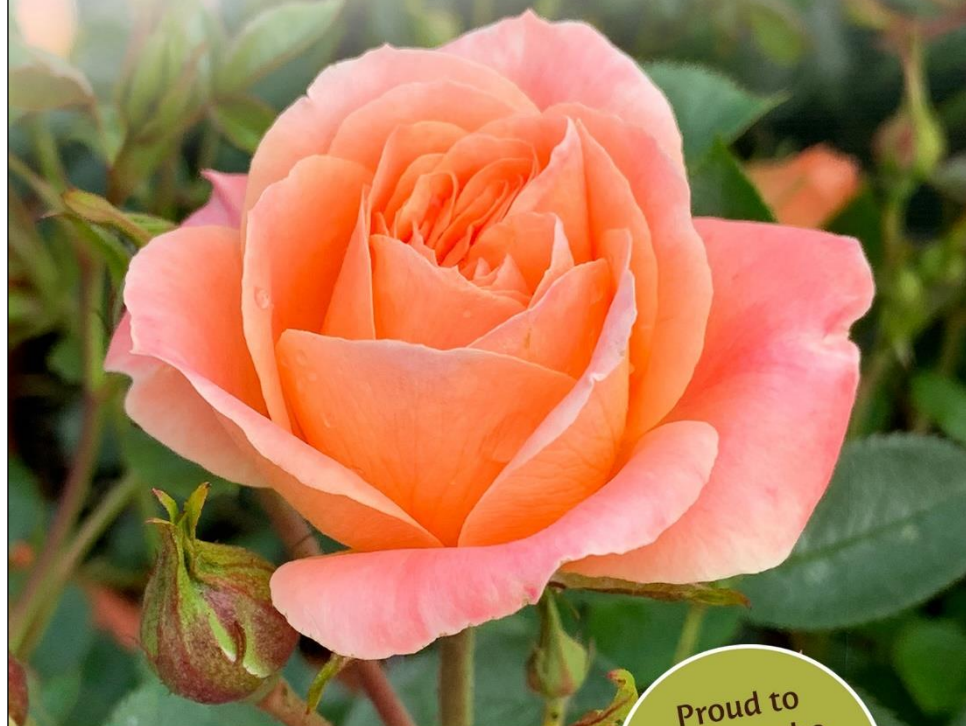
Dealing in: furniture, jewellery,
collectables and decorative art

Established 1976

Michael Wren & David Gwilliam



Find everything on your garden wish list at **Otter Garden Centres**



Enjoy the very best of gardening,
home and leisure at one of our
7 family-run garden centres.

Find top quality home-grown plants from
our nurseries, shop our wide range of
products and relax in one of our coffee shops.

Ottery St Mary - Wincanton

Plymouth - Torbay - Bishopsteignton - Lymington - Taunton

www.ottergardencentres.com

Proud to
support the
Bruton & District
Horticultural
Society Show



otter
your garden. your home.



Mugs, jugs and more available from Richard Pomeroy Porcelain

Visits by appointment to the Pottery in Patwell Lane, Bruton,
are welcome.

www.richardpomeroyporcelain.com
richardpomeroy100@gmail.com



Home To Wanstrow's Independent Shop & Café

Rare Breeds Farm Park

Monday-Saturday 9am-6pm

Sunday 10am-4pm

Now also home to Frome Weavers Spinners & Dyers workshop
www.fromeweavers.org.uk

Station Road | Wanstrow | Between Bruton and Frome | BA4 4SZ
01749 850 361 | www.redwoodrarebreeds.co.uk



PIPPINS

Luxury self-catering accommodation
½ mile from Bruton

Find us on Airbnb or message Helen
on 0779 175 5626



SECTION B – VEGETABLES (continued)

Where possible, please state the variety of vegetable

NOVELTY CLASSES

Class

- 57. Most unusual shaped fruit or vegetable
- 58. Heaviest Potato
- 59. Longest Runner Bean
- 60. Heaviest Onion
- 61. Heaviest Marrow / Courgette
- 62. Tallest weed (not a climber)
- 63. Smallest ripe tomato



Summer Camps
or Day Visits
2025

**fun
freedom
friends**

Bruton
Somerset BA10 0BA
01749 812 307
millonthebrue.co.uk

 **MILL ON THE BRUE**
outdoor activity centre

FRUIT

Preparation

The specialist would say that preparation begins at planting with choice of variety, but most people are probably blessed with gnarled old apple trees and unpredictable plums, which are likely to be beyond spraying and pruning in a small garden.

If there has been a good set of fruit, thinning is the most useful thing to improve quality. Start thinning apples and pears in early July after the 'June drop' and aim for final spacings of dessert apples one fruit per cluster, 10-15cm apart, and cooking apples one fruit per cluster, 15-22.5cm apart. Pears need less thinning, to not more than two per cluster. For plums, thin first when the size of hazel nuts, and again when twice this size, aiming for fruits 7.5cm apart. Use scissors or secateurs.

Protection against birds and wasps is important. The best solution is to put perforated polythene bags over selected fruits. Avoidance of over-shading by removing or tying back foliage will let in sunshine and aid even colouring.

Many kinds of soft fruit have finished by the Show date, but there are some fine varieties of later raspberries and strawberries well worth growing for quality and showing. Protect with netting. In dry seasons these later soft fruits will require regular watering.

Picking

Pick as near to show time as possible. Currants should be picked with the strings intact, choosing the longest strings with the largest fruits. Melons, and grapes in the bunch should be picked and shown with the stalk intact. It is easier to use scissors rather than fingers. When handling, try to avoid spoiling the bloom. All fruit, except apples, pears and gooseberries should be just ripe. Apples, pears and gooseberries may be shown under-ripe, but the judge should give preference to varieties in season rather than others. The general expectation is that fruits shown, except dessert apples, should be slightly above average size; enormous specimens are not wanted. For dessert apples, fruits may be a little above or a little below the ideal size of 7cm.

Staging

Aim to present a neat attractive, exhibit, symmetrical if possible. Do not polish the fruits; keep the bloom. Stage apples with the eye uppermost, and pears and similarly shaped fruits (e.g. figs) around the plate with the stalk to the centre. Arrange other, smaller fruits in rows across the plate with stalks pointing away from the front.

Finally, before you leave

Check the entries accord with the schedule and ensure you leave the correct entry card against the exhibit.

SECTION C - FRUIT

Where possible, please state the variety of fruit

Place exhibit on a plate or similar.

Class

- | | | |
|-----|-------------------------|--|
| 64. | Apples | 5 dessert |
| 65. | Apples | 5 cooking |
| 66. | Pears | 3 |
| 67. | Blackberries | 20 in a dish |
| 68. | Plums | 6 |
| 69. | A dish of stone fruit | Not plums. A reasonable quantity e.g. damsons - 9, apricots - 3 |
| 70. | Raspberries | 20 in a dish |
| 71. | Dish of any other fruit | A reasonable quantity e.g. figs - 3 |
| 72. | Collection of fruit | A presentation of 3 kinds of fruit, can include any of the above |

Note: Except for class 72, a fruit exhibit should be of one variety. Removal of stalks will disqualify.

BRUTON COUNTRY CENTRE

www.bruton-country-centre.co.uk

01749 812743

Outdoor Aquatics • Pet Foods and Accessories •
 Plants • Composts • Tools • Fencing • Aggregates

Large selection of seasonal goods for the garden and home

Household Fuels • Plumbing and Electrical Items
 Hardware and Ironmongery •
 Decorating and Cleaning Supplies • Wild Bird Seed and Feeders









Members of Bruton & District Horticultural Society receive a 5% discount on any gardening products, plants, compost etc at Bruton Country Centre on production of their 2025 membership card prior to purchase.

BRUTON & DISTRICT HORTICULTURAL SOCIETY 2025

ENTRY FORM

(Pull out this form from your schedule)

Your Mini Saga Entry

(Note: only one entry per person; do not give your name below)

Title:

Saga:

ENTRY FORM
BRUTON & DISTRICT HORTICULTURAL SOCIETY
100th ANNUAL SHOW – 16th AUGUST 2025

Complete this form and place it in an entry box at either:
The Community Office, Dovecot Buildings, High Street, Bruton or
Bruton Country Stores, Wisteria Yard, Bruton

Entry boxes will be in place from Monday 28th July and
close at **12.00 noon** on Wed 13th August.

**ENTRIES MUST BE PLACED IN THE BOXES PROVIDED OR SCANNED AND
EMAILED TO info@BrutonHorticultural.org.uk ****

Photocopies are accepted. Additional entry forms can be downloaded
from www.brutonhorticultural.org.uk

Name: (BLOCK CAPITALS)	
Age: (if under 12)	
Address:	
Tel. No:	
E-mail:	

I agree to abide by the Show Rules set out in this Schedule.

Signed:

Are you a member of Bruton Horticultural Society?

[] Yes [] No

*** Mini Sagas (class 81) can be emailed directly ensuring that you include the above contact details.*

[illegible]

Class 81- MINI SAGAS

A mini saga must be a complete fictional tale with a beginning, middle and end, and something happening - not simply description or rumination. Its length must be exactly 50 words, plus a title of up to 15 words. Hyphenated words count as one. Several examples are shown below. You'll see that each is exactly 50 words long.

There is no theme for the sagas, so indulge your imagination.

To give us more time to judge them, please write your mini saga in the space on the front page of the entry form (page 19) and hand it in by the Wednesday deadline before the Show. **(Note: only one Mini Saga per entrant.)**

2024 winners:

FIRST: A matter of Life or Death by Sue Trevellyan

The children are crying out with hunger. Most of us take turns for the food. Rats scuttle below for scraps. Suddenly the bully boys arrive and we all take flight.

The house door opens.

"Shoo jackdaws!"

The man tops up the sunflower feeder, retreats inside. Peace restored, we continue feeding.

SECOND: Two walks on the same day in August by Tricia Rawlingson Plant

A tiny wild space, hedgerows tumbling with wildflowers, bindweed and brambles. Black cap, robin, gold finch, blue tit, wren, insects, bees, grasshoppers, dragonflies darting over the abundance.

Another place: huge, dank fields, dark green, a monoculture, hedgerows clipped back bare, nothing moving except two flies. Not even a slug.

THIRD: Gardening is good for your mental health, but the slugs don't seem to know this by Ruth Forbes

The date was set, diaries marked, seeds were sown, packet instructions followed to a 't'.

Carefully labelled, watered, pricked out and potted on. Days went by, looking good, growing well.

But the slugs had other plans, dawn raids, leaves chomped, so be blowed, no entries for the show.

Next year?

SECTION D - FLOWER DECORATION

Class

73. **Centenary arrangement** An exhibit of mixed flowers and foliage celebrating the centenary of the Show. Max 60cm width, and, depth unlimited height, accessories allowed
74. **"Nature's delights"** An exhibit to include flowers and foliage from gardens or hedgerows. Max 45cm width and depth, unlimited height
75. **"Supermarket challenge"** The best arrangement you can make from a supermarket / petrol station bunch of flowers , maximum spend £7.50. Accessories and foliage. allowed. Max 60cm width, and depth, unlimited height
76. **Table centre piece** An exhibit of flowers and foliage, accessories allowed. Max 30cm diameter
77. **A floral arrangement in a box** Max 25cm width and depth, 37cm height

Exhibits will be staged on tabling covered in black cloth. The exhibits will be judged according to the NAFAS Competitions Manual 4th Edition 2023.

	<p>A warm welcome awaits you at</p> <h2>The Sun Inn Bruton</h2> <p>Home cooked Sunday roast</p> <p>Served with seasonal veg and locally sourced produce</p> <p>Lunch 12 noon – 2.30pm; Dinner 6.00 – 9:30pm</p> <p>Authentic Persian cuisine, all home made by our Persian chef (evenings only)</p> <p>01749 813493 thesuninnbruton@yahoo.co.uk</p>
---	---

TROPHIES AND PRIZES TO BE AWARDED		WINNER 2024
Section A - Flowers		
Rosemarie Paul Memorial Cup	Best exhibit of annual flowers (class 3)	Heather Sanders
A S Windmill Cup	Best exhibit in the pot plant classes (classes 24-25)	Stella Kinread
Gardens Group Voucher	Best Fuchsia (class 26)	Janet Jones
	Best Geranium (class 27)	Janet Jones
Idwal and Elsie Roberts Bowl	Best exhibit (classes 1-2, 4-23)	Neil Parfitt
Peggy Shingler Memorial Cup	Exhibitor gaining most points in the Rose classes (classes 10-12)	Deborah Gibson
Society Cup	Exhibitor gaining most points (classes 1-27)	Janet Jones
Section B - Vegetables		
Jonathan Hatcher Cup	Best exhibit (Classes 30-53, 55-63)	Neil Parfitt
Goodland Rose Bowl	Best collection of vegetables (class 54)	Neil Parfitt
Johnny Neugasser Cup	Exhibitor gaining most points (Classes 30-63)	Neil Parfitt
Section C - Fruit		
Davis Cottagers' Cup	Best exhibit (classes 64-72)	Ken Dominey
John Windmill Cup	Exhibitor gaining most points (classes 64-72)	Patience Thom
Banksian Medal - Exhibitor gaining most points in sections A, B and C (classes 1-27, 30-72)		Neil Parfitt
Section D - Floral Decoration		
Bill Chidgey Shield	Best exhibit (classes 73-77)	Heather Sanders
Olivia Sale Cup	Exhibitor gaining most points (classes 73-77)	Di Clothier

TROPHIES AND PRIZES TO BE AWARDED		WINNER 2024
Section E - Handicrafts and Hobbies		
Chidgey Cup	Best exhibit (classes 78-92)	Flora Rawlingson Plant
Challenge Cup	Exhibitor gaining most points (classes 78-92)	Ellen Styles
Section F - Photography		
Diamond Jubilee Cup	Best exhibit (classes 93-100)	Ellen Styles
Henry Fair Trophy	Exhibitor gaining most points (classes 93-100)	Ellen Styles
Section G - The Kitchen		
Otter Nurseries Voucher	Best exhibit (classes 101-120)	Helen Parker
Leslie Challenge Cup	Exhibitor gaining most points (classes 101-120)	Nick Jones
Section H - Children		
The Jubilee Shield	Best exhibit in children's classes 121 - 123	(None)
John Staite Cup	Best exhibit in children's classes 124 - 127	Autumn Branson
L J Viney Challenge Cup	Best exhibit in children's classes 128 - 130	Louis
Cash prize - £10	Best exhibit in children's classes 131 - 136	Theo Gibson
RHS Junior Competitors Award	Best overall effort (classes 121- 136)	Florey Hawkins
The President's Cup - An exhibit of special merit selected by the President from all sections		Ken Dominey

England's Cheddar makers



Proud to support
Bruton Horticultural Society



Bruton

Dental and Implant Centre

At Bruton Dental and Implant Centre, we offer a full range of dental services designed to meet all your oral health needs. Our welcoming and modern facilities are equipped with state-of-the-art equipment, ensuring you receive the highest level of care.

♥ Dental Implants for just £2750

♥ Braces starting at £1950 per arch

♥ Aligners starting at £2250 per arch

Our goal was to be able to accommodate under the same roof, a complete range of dental treatments delivered by a highly qualified clinical team in a relaxed and friendly atmosphere.

We are constantly looking to improve our facilities, equipment and our staff training in order to deliver a high level of dental care and service to our patients.



Visit us at www.brutondental.co.uk or call 01749 812461 to schedule your appointment today!

Galhampton

Shop & Country Store

Animal Feeds and Bedding
Timber Supplies | Tools | Hardware
Gardening | Workwear | Logs and Gas
Local Food | Home Essentials

Open 7 days a week
Mon-Sat 7.30am – 5.30pm | Sun 10am – 4pm
01963 440464



*Family-run, rural country store on A359
between Castle Cary and Sparkford*

Fir Tree Business Park, High Road,
Galhampton, Somerset, BA22 7BH
sales@galhamptoncountrystore.co.uk



SECTION E - HANDICRAFTS and HOBBIES

Where appropriate, please state the medium / media used

Class

- | | | |
|-----|---------------------------------|---|
| 78. | An edible farm animal | Made from any vegetable or plant material, may include cocktail sticks max height 45cm, max depth and width 30cm |
| 79. | An invitation or greetings card | Hand made |
| 80. | A limerick | "It's the 100 th year of the show ..."
A5 size paper |
- Limericks to be submitted on show morning; your name should not be shown*
- | | | |
|-----|--|--|
| 81. | A mini saga | See back page of entry form (page 19) for details; Your name should not be shown against your saga |
| 82. | A knitted or crocheted article | |
| 83. | A tapestry or cross-stitch item from a kit | |
| 84. | An article of patchwork, needlepoint, tapestry, weaving, collage, lace or hand produced felt | |
- For any items larger than 45cm, please indicate size on entry form.
- | | | |
|-----|------------------------------|---|
| 85. | Hand-made flowers | 1-5 stems |
| 86. | New from old | A new item made from an old one
Please state the item's previous use |
| 87. | A bird in any medium | Max height 45cm, max depth and width 30cm |
| 88. | A decorated flowerpot | 1 litre max. |
| 89. | A miniature garden | 30cm x 30cm max. |
| 90. | An apron | Any medium |
| 91. | An original painting | In any medium, max 60cm x 60cm, so able to be hung on display |
| 92. | An original drawing | In charcoal, pen and ink, or pencil, max 60cm x 60cm, so able to be hung on display |

SECTION F - PHOTOGRAPHY

Class

- 93. **Centenary celebrated**
- 94. **"Gone to seed"**
- 95. **My shed**
- 96. **Chocolate**
- 97. **Winter wonderland**
- 98. **Glasses**
- 99. **Fire and smoke**
- 100. **Front cover for "The Dove"** a black and white photo suitable for using as a cover for The Dove magazine, this needs to be of high resolution and a strong image linked to one of the monthly editions.

Note: Photographs must be no larger than 20.5cm x 15cm, mounted on backing board 25cm x 20cm max for display, with entry card attached. Coloured backing board looks attractive.

 <p>POST OFFICE</p> <p>Premier</p> <p>Bruton Convenience Store</p> <p>23 High Street, Bruton, BA10 0AH</p> <p>Shop 01749 812308 Cafe 07300 868555</p>	<p>Your one-stop shop for Groceries, Organic treats and Post Office</p>  <p>Enjoy authentic Indian cuisine at Desi Café, serving delicious taste of India right here in Bruton</p> <p>Visit us today Quality, Convenience and Great Food!</p>
--	--

SECTION G - THE KITCHEN

Class

- 101. **Hand-made seeded loaf - 25 x 35cm**
- 102. **5 fruit scones - using a 5cm cutter**
- 103. **Iced celebration cake, single tier**
- 104. **A chocolate cake**
- 105. **A fruit pie - 25cm dia max**
- 106. **5 sweet muffins**
- 107. **A shortbread round**
- 108. **5 cheese straws**
- 109. **5 sausage rolls**
- 110. **5 rocky road**
- 111. **5 brownies**

ALL THE ABOVE FOOD EXHIBITS MUST BE COVERED WITH CLING FILM

- 112. **A jar of strawberry jam**
- 113. **A jar of jam (not strawberry)**
- 114. **A jar of Seville orange marmalade**
- 115. **A jar of chutney**
- 116. **A jar of honey**
- 117. **A small bottle of salad dressing**
- 118. **5 hen or duck eggs**
- 119. **Home-made cordial - one 75cl bottle (clear glass)**
- 120. **Home-made fruit spirit (e.g. sloe gin, plum brandy, etc)**

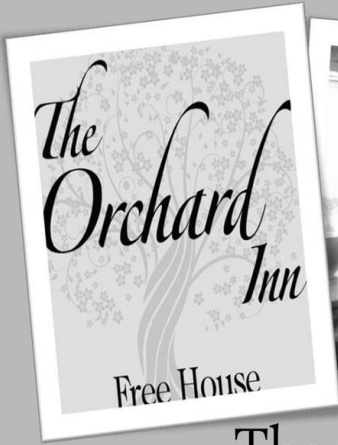


Elliscombe House

A LUXURY HOME PROVIDING RESIDENTIAL AND NURSING CARE
IN AN ELEGANT COUNTRY SETTING

24-hour Nursing care, led by nurses
Convalescence, Respite and Residential care

Higher Holton, Wincanton BA9 8EA
www.elliscombehouse.com, 01963 32746



The Orchard Inn



*A traditional English Pub, serving
good homemade food, sourced
locally, great real ales, and a warm
welcome.*

High Road, Galhampton

01963 440751

www.orchardinngalhampton.co.uk





Common Farm Flowers
Charlton Musgrove

Flower Farm,
Click and Collect Flower Orders,
Wedding Flowers, Workshops

www.commonfarmflowers.com

SECTION H - CHILDREN

Class

Group 1: open to all children under 7 on Show Day

- 121. Anything I have painted / drawn (A3 size max)
- 122. Anything I have made – e.g. a Lego model, a handicraft item, a cake / edible item
- 123. Anything I have grown – flowers, vegetables or fruit

Group 2: open to all children under 10 on Show Day

- 124. Anything I have painted / drawn (A3 size max)
- 125. Anything I have made – e.g. a Lego model, a handicraft item, a cake / edible item
- 126. Anything I have grown – flowers, vegetables or fruit

Group 3: open to all children under 12 on Show Day

- 127. Anything I have painted / drawn (A3 size max)
- 128. Anything I have made – e.g. a Lego model, a handicraft item, a cake / edible item
- 129. Anything I have grown – flowers, vegetables or fruit

Group 4: open to all children under 16 on Show Day

- 130. An arrangement of flowers or foliage in a 454gm jam jar
- 131. A handicraft item e.g. an article of patchwork, needlepoint, tapestry, weaving, collage, lace or hand produced felt
- 132. 3 decorated cup cakes
- 133. A photograph I have taken with a caption*

* Photographs must be no larger than 20.5cm x 15cm, mounted on backing board 25cm x 20cm max for display, with entry card attached. Coloured backing board looks attractive.

SAVOUR ^{the} SPIRIT of SOMERSET



Explore the range in our Bruton Shop
or visit www.godminster.com



the
GODMINSTER
OAK



BRUTON
DOVECOTE



GODMINSTER
FARM



GLASTONBURY
TOR



RIVER BRUE

PROGRAMME FOR 2025

Wednesday, 21 st May, 8:30am	Coach visit to Kew Gardens
Wednesday 4 th June, 2:30pm	Cadenham Manor, Foxham, Chippenham, SN15 4NH
Monday, 16 th June, 6pm	Members' Garden Social, Cooks Farm, North Brewham
Friday, 25 th July, 2:30pm	Gaspar Cottage, Stourton, BA12 6PY
Saturday, 16 th August, 2:30pm	Annual Show, Fitzjames Hall by kind permission of King's School
Wednesday, 10 th September, 2pm	Burrow Farm Gardens, Dalwood, Axminster, EX13 7ET
Monday, 15 th September	Gill Hazel's talk: 'Rare and unusual bulbs'
Monday, 20 th October	Castle Gardens Gold Club talk on 'Growing Your Own'
Monday, 17 th November	Arthur Cole's talk on 'The Newt - 6 years' On'
Monday, 19 th January 2026	AGM and talk / Saturday, January 24 th Winter Lunch - Both TBC

Talks are held at Bruton Community Hall (opposite the Church). Free tea / coffee and biscuits from 7.15pm for a 7.30pm start. Reminder details will be issued prior to each event.

For just £8 a year you can become a member of the Bruton & District Horticultural Society and enjoy a full programme of talks and visits. Full details at: www.brutonhorticultural.org.uk

COMMITTEE

President	Alison Bleasdale
Chair, publicity	Jan Juneman
Vice Chair, show team, visits admin, website	Janet Jones
Secretary	Jane Hodges
Treasurer	Hugh Wauton
Committee member	Caroline Rathbone
Plant sale organiser	Sue Bradder
Raffle	Felicity Smith
Refreshments	Sarah Waller
Show team	Anne Jelliffe
Show team	Helen Parker
Speakers	vacant
Visits, membership, seed order	Deborah Gibson

JUDGES

Flowers and Novelty Vegetables	Mr R T Carver, Frome
Vegetables and Fruit	Mr Sidney Painter, Broadway
Flower Decoration	Dr Francis Burroughes, Alvington, Yeovil
Handicrafts and Hobbies	Ms Chrys Henning, Alhampton
Mini Sagas	Mrs Katie Mills, Bruton
Limericks	Mrs Sue Bradder, Castle Cary
Photography	Mr Lachlan Fraser, Cucklington
The Kitchen	Mr Ian Forbes, Bruton
Cordial and Spirits	Mr Colin Juneman, Bruton
Children	Mrs Mary Aston, Bruton

RULES

1. The Show will be governed in the main by the R.H.S. Show Handbook, which can be examined on application to the Secretary.
2. Entries will be taken as detailed on entry forms. No entry fees to exhibit are payable. No entries will be accepted after the times shown on the entry form.
3. The number of entries an exhibitor may make in any one class is restricted to two (the first entry will have a suffix a and the second, suffix b) except one for the Mini Saga. Only one prize will be awarded per exhibitor per class.
4. All exhibits must be the bona fide property of, cultivated or made (except section D) by the exhibitor and not previously exhibited at this show.
5. Class cards are issued when exhibits are staged and must be placed with each exhibit (name hidden). Exhibitors are encouraged to label horticultural exhibits with the name of the variety.
6. Exhibits, including limericks, may only be submitted at the times shown. The exception is Mini Sagas, which must be submitted with the entry form.
7. Staging of exhibits may commence at 8.30am and must be completed by 10.30am on the day of the show, when all but the judges and officials must leave the hall. Exhibits and prize cards must remain on display until the Show closes at 5.00pm. The Committee will dispose of any exhibits not collected.
8. The Committee will not be responsible for any loss or damage to exhibits before, during or after the Show, but all reasonable care will be taken.
9. Judges may withhold prizes where the standard is too low, or where there are insufficient entries.

10. Notice of any objection to an exhibitor or exhibit is to be made in writing and handed to the Secretary before 3.00pm on the day of the Show.
11. The Committee shall have the power to decide all matters not provided for in these rules and on all matters on which there is any question, and their decision shall be final.
12. Points for Challenge Cups are awarded as follows:

3 points -	1 st prize
2 points -	2 nd prize
1 point -	3 rd prize

except for Classes 1, 54 and 72 which are awarded double points. Classes 57-63 are only awarded a 1st prize (3 points).
13. All cups and trophies shall remain the property of the Society and will be held by the winners for one year only, to be handed back clean and in sound condition by 31st July 2025.
14. In the event of a tie for a cup, the number of 1st, 2nd and 3rd places will be considered to determine an overall winner.
15. The Banksian Medal will be awarded to the winner of the highest number of place points in sections A, B and C. The competitor who won the medal in 2023 or 2024 will not be eligible for the Medal this year. Similarly, the winners in 2024 of the Society Cup, the John Windmill Cup or the Johnny Neugasser cup will not be eligible this year.



BAILEY HILL BOOKSHOP

We value customers of all ages and
well-behaved dogs

Making the perfect match between
book and customer since 1980

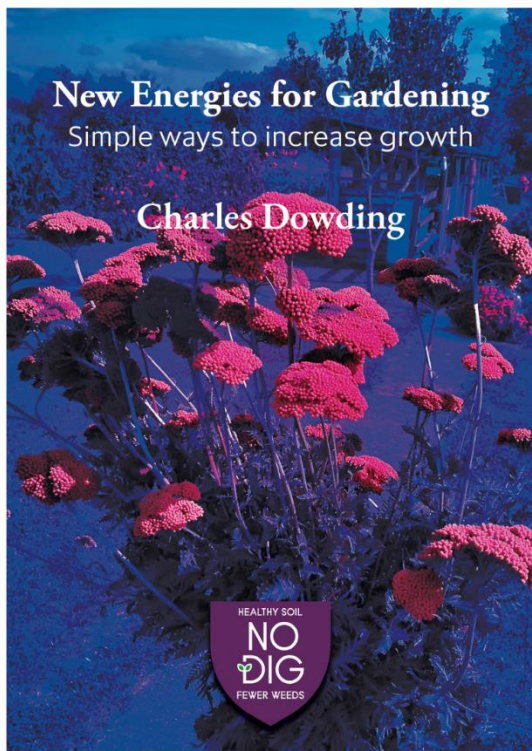
Fore Street Castle Cary BA7 7BG
01963 350917 ~ bhbsnews@gmail.com ~ baileyhillbookshop.com



**STRIPY
DUCK**
cafe & bookshop

Delicious Gluten free cake
Eclectic collection of
books & book talks
Games
Easy atmosphere
35 High Street BRUTON
Monday to Sunday 10-5
(7 days a week)
@stripyduckbookshopcafe
01749 814814

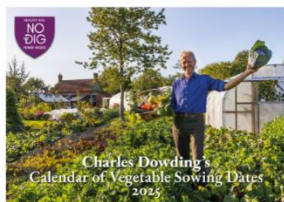
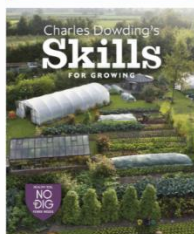
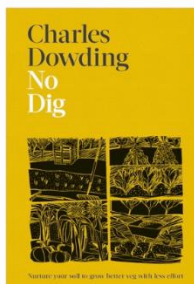
New title by Charles Dowding



This new book from Charles brings together a number of different techniques he is utilising in his garden to help his plants to be healthy and give abundant harvests. The materials needed can be cheap to buy or freely available.

Head to his website shop to buy books and book course days at Homeacres, just down the road in Alhampton.

www.charlesdowding.co.uk



HAUSER & WIRTH
SOMERSET

**HOME TO EXHIBITIONS,
EVENTS, LEARNING, FOOD
AND ARTIST RESIDENCIES**

DURSLADE FARM, BRUTON
SOMERSET BA10 0NL

Oudolf Field, Hauser & Wirth Somerset. Courtesy Hauser & Wirth Photo: Jason Ingram