



ABM WATER CORPORATION

Your Happiness is our Success

TRADING

Your Happiness is our Success



- Dosing System and Agitators
- Motorized Pumps & Motors
- Chemical Dosing Pump
- Filter Press & Diffuser
- MBBR & Tube Settler Media
- Root, Gas & Ring Blower
- Mechanical Vacuum Booster
- Sludge Dewatering Machine
- Acoustic Enclosure
- WTP,ETP & STP Components



AB-305 Direct Drive with 0.75 HP Motor

Model	IN./OUT.	MOTOR	SPEED	1000 MMWG	2000 MMWG	3000 MMWG
	(MM)	HP	RPM	M3/HR	M3/HR	M3/HR
AB-305	19	0.75	1440	19	17	15



AB-315 Direct Drive with 1 HP Motor

Model	IN./OUT.	SPEED	1000 MMWG	2000 MMWG	3000 MMWG	4000 MMWG	5000 MMWG
	(MM)	RPM	M3/HR	M3/HR BHP	M3/HR BHP	M3/HR BHP	M3/HR BHP
AB-315	25	940	25 0.54	24 0.60	22 0.69	19 0.81	16 0.95
	40	1440	50 0.61	46 0.74	42 0.91	39 1.04	



Tri-Lobe Roots Blowers

It employs two Tri-Lobe impellers mounted on parallel shafts, rotating in opposite direction within a casing closed at the ends by side plates. A pair of accurately machined alloy steel, hardened and ground timing gears maintain clearances between the impellers, during rotation. The air, thus delivered, is 100% OILFREE.



Ring Blower

- 100% oil free air
- Low noise level due to internal silencer
- Less vibration
- External bearing increase life
- Suitable for Pressure & Vacuum application
- Fully Copper Winding

• Gas Blower

AKASH Blowers manufacture a standard range of cast iron air blowers.

The range covers capacities to 6931 cfm (11749 m³/h).

These blowers are designed and built to provide reliable, long life, oil free operation at a competitive price and can be supplied as bare shaft for OEMs or as complete packages.



STANDARD AIR BLOWER PACKAGES

AKASH Blowers also offers an extensive range of standard air blower packages for a wide variety of applications and industries. The main applications are water and sewage treatment and pneumatic conveying. AKASH air blower packages include all the standard accessories such as silencers, filters, valves, drives and acoustic enclosures, as required.

Each AKASH air blower package is tested before dispatch.

• Sludge Dewatering Machine

Innovative Solution for Sludge Dewatering Challenges

The sludge dewatering machine are widely used in solid-liquid separation to minimize the sludge disposal. The Sludge is pumped to the flocculation chamber where poly-electrolyte solution is added for formation of flocks and continuously mixed during operation with the help flocculation paddle to ensure the relative stability of the sludge concentration. Then treated sludge moves forward into the dewatering cylinder where liquid is drain from the gap between the rings under the gravity and dewater sludge cake discharge at the end of cylinder.

Applications

- Municipal Sewage Sludge
- Waste Water Treatment Plant
- Industrial Waste Water Treatment Plant
- Dairy Farming
- Chemical & Pharmaceutical Plants



- HCP Submersible Pumps -

AF Series



- **Specifications**

Frequency: 50 Hz & 60 Hz
Rated Power: 0.4 kW ~ 55 kW
Max. Head: 54 m
Max. Capacity: 31 m³/min

- **Applications**

Wastewater - Sewage - Industrial
Wastewater

F/FN Series



- **Specifications**

Frequency: 50 Hz & 60 Hz
Rated Power: 0.4kW ~ 3.7kW
Max. Head: 27.5 m
Max. Capacity: 1.4 m³ /min

- **Applications**

General wastewater - Sewage and
Industrial water

SF/SA Series



- **Specifications**

Frequency: 50 Hz & 60 Hz
Rated Power: 0.4 kW ~ 55 kW
Max. Head: 68.5 m
Max. Capacity: 2.3 m³/min

- **Applications**

Corrosive • Food • Processing
Liquids

L Series



- **Specifications**

Frequency: 50 Hz
Rated Power: 0.4 kW ~ 11 kW
Max. Capacity: 9m³/min

- **Applications**

Agriculture irrigation -
Agriculture water - River water

J Series



- **Specifications**

Frequency: 50 Hz
Rated Power: 0.4kW ~ 3.7kW
Max. Head: 27.5 m
Max. Capacity: 1.4 m³ /min

- **Applications**

Waste Water - Sewage -
Industrial Waste Water

GF Series



- **Specifications**

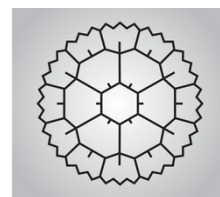
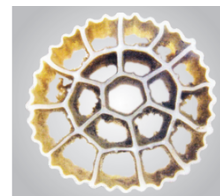
Frequency: 50 Hz
Rated Power: 1.0kW ~ 7.5kW
Max. Head: 53m
Max. Capacity: 0.55 m³ /min

- **Applications**

Residential Wastewater • Sewage

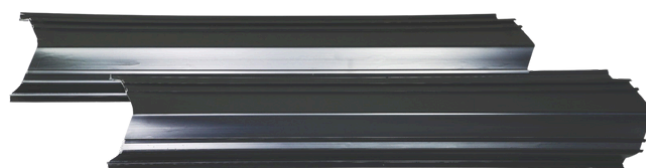
FAB / BIO / MBBR MEDIA

SIZE	12 X 25 mm
NO. OF HOLES	19
SURFACE AREA	>500 m²/m³
DENSITY	0.94 - 0.96 gm/cm³
POROSITY	>90%
DOSING RATIO	15 - 65%
MEMBRANE FORMING TIME	3 - 15 DAYS
BOD OXIDATION EFFICIENCY	2000 - 10000 gm/m³
COD OXIDATION EFFICIENCY	2000 - 15000 gm/m³
APPLICABLE TEMPERATURE	5 - 60° C
LIFE SPAN	>10 YEARS
MOC	VIRGIN HDPE



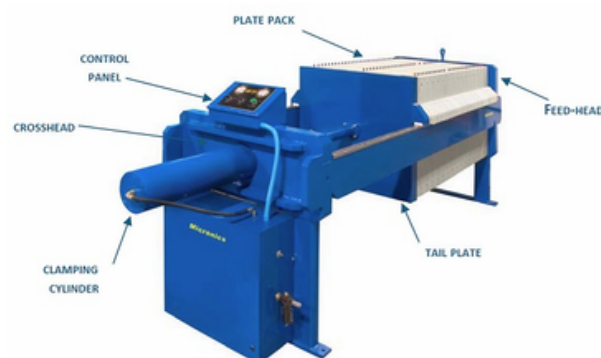
TUBEDEK MEDIA

PLAN SETTLING AREA	60° SLOPE : 11 m²/m³ 55° SLOPE : 13 m²/m³
HYDRAULIC RADIUS	15 mm
CROSS SECTIONAL AREA	120 mm X 44 mm
COLOUR	BLACK
MOC	PVC
THICKNESS	1 mm Approx.
FITTING ARRANGEMENT	TONGUE & GROOVE
MAX. CONTINUOUS OPERATING TEMP.	55° C



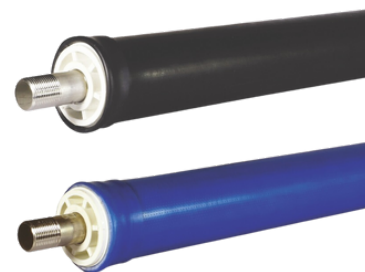
FILTER PRESS

STRUCTURE	CAST IRON / MILD STEEL
SIZES	12" TO 48"
NOZZLE	SS 304/PP
CLOSING DEVICE TYPE	MANUAL, RATCHED GEAR HAND HYDRAULIC AND POWER HYDRAULIC
FILTER PLATE	PP
DELIVERY	OPEN
WORKING PRESSURE	UPTO 7 kg/cm²
FILTER MEDIA	PP/NYLON/POLYSTER/COTTON
WORKING TEMP.	UPTO 60° C



FINE BUBBLE TUBULAR DIFFUSERS

SPECIFICATION & ITEM CODE	VPFBD 600	VPFBD 1000	VPFBD 1090
SIZE	63 x 620 mm	63 X 1020 mm	90 X 1020 mm
SUPPORT PIPE OD	63 mm	63 mm	90 mm
MEMBRANE ID	63 mm	63 mm	90 mm
MOC OF MEMBRANE	EPDM / SILICONE	EPDM / SILICONE	EPDM / SILICONE
AIR FLOW RANGE	2 - 7.5 m ³ /hr	2 - 10 m ³ /hr	3 - 15 m ³ /hr
MAX. PRESSURE ALLOWED	1.5 kg/cm ³	1.5 kg/cm ³	1.5 kg/cm ³
CONNECTION SIZE	3/4" BSP	3/4" BSP	1" BSP
BUBBLE SIZE	0.8 - 1.9 mm	0.8 - 1.9 mm	0.8 - 1.9 mm



COARSE BUBBLE DIFFUSERS

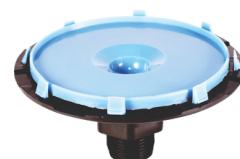
SPECIFICATION & ITEM CODE	VPCBD 80	VPCBD 150
SHAPE	DISC TYPE	DISC TYPE
DIA SIZE	80 mm	150mm
BUBBLE SIZE	4 - 5 mm	6 - 8 mm
MOC OF MEMBRANE	EPDM / SILICONE	EPDM / SILICONE
MOC OF BASE	PPCP	TOUGH ABS PLASTIC
MAX. OPERATING TEMP.	60° C	60° C
AIR DISCHARGE PORTS	10	8
AIR FLOW RANGE	1 - 5 m ³ /hr	4 - 10 m ³ /hr
END CONNECTION MALE THREAD	3/4" BSP	1" BSP
MAX. PRESSURE ALLOWED	1 kg/cm ²	1.5 kg/cm ²



VPCBD 80 EPDM



VPCBD 150 EPDM



VPCBD 150 SILICONE

FINE BUBBLE DISC DIFFUSERS

SPECIFICATION & ITEM CODE	VPDD 9	VPDD 12
MOC OF MEMBRANE	EPDM / SILICONE	EPDM / SILICONE
BASE AND RING	PP	PP
CONNECTION	3/4" BSP MALE THREAD	3/4" BSP MALE THREAD
AIR FLOW RANGE	0 - 12 m ³ /hr	0 - 20 m ³ /hr
PERFORATION SIZE	1 mm	1 mm
BUBBLE SIZE	0.8 - 1.9 mm	0.8 - 1.9 mm
MAX. PRESSURE ALLOWED	1.5 kg/cm ²	1.5 kg/cm ²
SIZE	9"	12"





Electronic Dosing Pump

Material Of Construction Of Wetted Parts

PP, PVDF, PTFE & SS316, Alloy20

- Technical Specification -

1. Power Supply	230v AC, 50Hz
2. Power consumption at max. speed	40 Watt
3. Fuse	500mA / 230v AC
4. Pump stroke per minute {adjustable}	120 Maximum
5. Negative Suction	1 Mtr
6. Environment temperature	40° C Maximum
7. Capacity Maximum	50 Lph
8. Pressure Maximum	17 Kg.



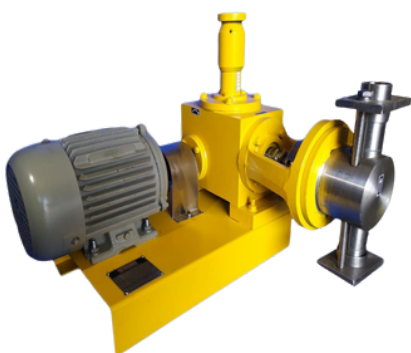
Mechanically Actuated Diaphragm Pump

Material Of Construction Of Wetted Parts

SS 304, SS 316, SS 316L, PP, PTFE(Teflon), PVC, Alloy-20 Haste Alloy

- Capacity

No.	Pump Model	Capacity (L.P.H.)	Max Pressure
1.	MD - 01	0 to 100	4 BAR
2.	MD - 02	0 to 200	4 BAR
3.	MD - 03	0 to 300	4 BAR



Standard of API - 675

Plunger Pump

Material Of Construction Of Wetted Parts

SS 316, SS 316L, SS 304, Haste alloy, Alloy-20 or other machinable material.

- Capacity

No.	Pump Model	Capacity (L.P.H.)	Max Pressure
1.	PL-01	0 to 152	80 BAR
2.	PL-02	0 to 761	99 BAR
3.	PL-03	3 to 3000	230 BAR
4.	PL-04	0 to 7000	400 BAR



Standard of API - 675

Hydraulically Operated Diaphragm Pump

Material Of Construction Of Wetted Parts

SS 316, SS 316L, SS 304, Haste alloy, PP, PTFE(Teflon), PVC, Alloy-20 or other machinable material.

- Capacity -

No.	Model	Capacity (L.P.H.)	Max Pressure
1.	HYD - 01	0 to 152	45 BAR
2.	HYD - 02	0 to 761	45 BAR
3.	HYD - 03	0 to 3000	45 BAR
4.	HYD - 04	0 to 6000	45 BAR



Standard of API - 676

Progressive Cavity Screw Pump

Material Of Construction Of Wetted Parts

Housing Parts Cast Iron, Cast Steel, Cf8 (AISI 304), CF8M (AISI 316) & AISI 316L, Fabricated finished as per Food Grade Standard

- Capacity

1.	Max. Flow	175m ³ /Hr.
2.	Max. Temp	250 C
3.	Max. Viscosity to be handled	500000 CP
4.	Discharge Pressure	Up to 36 bar



Lp and Hp Dosing Systems



Chemical Dosing System



Automatic Polyelectrolyte Dosing System Supplied to Africa



Lime Dosing cccSystem



Features :

- Compact design
- Easy to install
- Dimensionally accurate

Type

- Turbine
- Hydrofoil
- Propeller
- Paddle

MOC Of Wetted Parts

SS 316, SS 316L, SS 304, Hastelloy, MS+PVC, MSEP, MS+FRP, MS+PTFE, MS+PP Alloy-20 or other machinable material.

Agitators / Mixer



Dampner :

Use : To Reduce Pulsation

Material of construction :

SS 304, SS316, PP, MS + PTFE, MS + EP, MS, PTFE, PVC

Capacity : Up to 13 ltr.

Type : Volume bottle

End connection : Screwed, Flanged

Strainer :

Material of construction :

SS 304, SS316, PP, MS + PTFE,

Size : 1/2" to 10"

Type : "Y" types

End connection :

Up to 1 1/2" screwed end above 2" flanged end.



Pressure Safety Valve:

Use : For Safety of pump and pipe line damage due to excess pressure

Material of construction :

SS 304, SS316, PP, PTFE

Type : Spring loaded

End connection : Screwed, Flanged

Anti-Siphoning Valve :

Material of Construction :

SS 304, SS316, PP, PTFE, PVC

End Connection

Screwed, Flanged

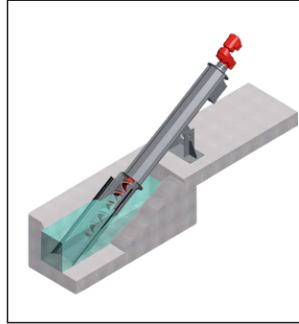


- Water & Wastewater Treatment Components -



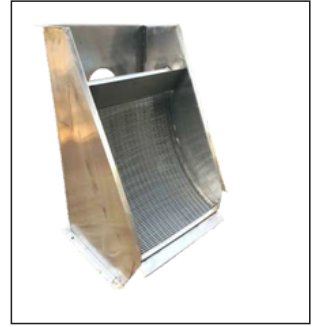
Oil Skimmer

- **Belt width** : 100 mm To 500 mm.
- **Oil Removing Capacity** : 5-75 LPH



Screw Screen

- Low cost solution.
- Use with acidic or basic liquids.
- Low Maintenance.
- Applicable for small width of water channels.
- Inclined Angle : 35 Degree.



Static Screen

- Filtration Range** : 0.25 - 2 mm
- No moving parts, no motor
- Very low installation cost
- Only need regular cleaning
- Use V-shaped wedge wire for long life



Rotary Drum Filter (internal)

- Nominal membrane surface area** : 27.9 m² (300 ft²)
- Membrane** : PVDF
- Nominal fiber** : OD: 1.9 mm (0.07 in)
ID: 0.8 mm (0.03 in)
- Flow path** : Outside-in



100Ltr Tank with Agitator

- Tank Capacity** : 100 Ltr
- Tank MOC** : LLDPE
- RPM** : 100
- Motor** : 0.25 HP



RO & UF Membrane,

- Length** : 40"
- Diameter** : 4" & 8"
- Brand** : Hydraunautics, LG, Suez, Dukan
- Flow Rate** : 250 LPH & 1000 LPH



MBR

- Nominal membrane surface area** : 27.9 m² (300 ft²)
- Max shipping weight** : 134 kg (75 lb)
- Lifting weight** : 262 kg (137 lb)
- Membrane material** : PVDF
- Nominal pore size** : 0.04 micron



FRP & Ms Vessels

- Size** : Available in multiple sizes as per customer requirement
- Design** : Easy design
- build** : good finishing
- Coating** : FRP and Rubber lining Coating



Ozonator

- Capacity** : 5 gm/hr. to 500 gm/hr.
- Water Source** : Industrial Effluent, Municipal Sewage, Commercial Waste Water.
- Automation Grade** : Semi-Automatic, Automatic.

- Water & Wastewater Treatment Components -



Flow Meter or Rotameter

Size : 500lph to 90,000lph

Connection : 1/2" to 3

Make : CWC and Aster



Carbon, Sand & Resin Media

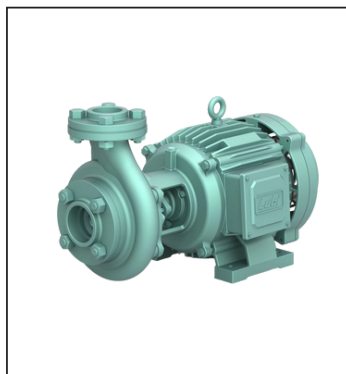
- Available in all sizes
- Wide IV range available with best rates
- Iodine value Assurance



Pressure Control Switch

Type : Low Pressure & High- Pressure Switches

Make : Danfoss & Indfoss



Monoblock Pumps

Flow range: up to 156 m³/h

Head range: up to 100 mtrs

Rating: 1 phase – 2.20 to 3.70 kW
& 3 phase – 1.50 to 22.0 kW

Rated speed: 2900 rpm



Pressure Gauge

Dial Size: 2.5 inch / 63 mm

Pressure Range: 25 mBar to 600mBar

Use: Process Industries

Display Type: Analog



PP & PP Wound Cartridge
& Cartridge Housing

Size : 2.5"x20", 2.5"x30",
2.5"x40", 4"x10", 4"x20"
and 4.5"x20"



Multi Cartridge , Bag Filter
Housing & SS MCF

Cartridge Size : 2.5"x30 & 2.5"x40"

Round : 5, 7, 9 and 11

MOC : UPVC and SS

Size : 4.5"x20" and 7"x32"

(Single, Double and
Triple bag)

MOC : PP, UPVC and SS



Control Valves

- All types of valves in SS and MS MOC with all sizes.



High Pressure Pump

- ADELINO - KIRLOSKER
- SHIMGE - CNP
- LUBI - CRI

TRUST TO OUR COMPANY !!!

- 1) Skilled Process Engineers
- 2) Excellent Products
- 3) Cutting-Edge Performance
- 4) Innovative Testing Methods
- 5) Eye-Catching Appearance
- 6) Budget-friendly Pricing
- 7) Fastest Delivery
- 8) Quick Responses from Team ABM WATER CORPORATION
- 9) Reliable Technical Help
- 10) Full Support
- 11) Dedicated Services
- 12) Valuing Relationships Above Business



ABM WATER
CORPORATION
Your Happiness is our Success



R/790 , mahalaxmi nagar,
near pioneer college,
Indore, Madhya Pradesh
452001



+91 8839604093



Sales.abmwater@gmail.com



www.abmwaters.com

