



CADESTEEL
ENGINEERING SERVICES LLC



**CADESTEEL
ENGINEERING
SERVICES LLC**

 support@cadesteel.com

 [+1 \(989\) 564-2060](tel:+19895642060)

 www.cadesteel.com

STRUCTURAL & MISCELLANEOUS STEEL DETAILING



WELCOME TO CADESTEEL

At Cadesteel Engineering Services LLC, we are proud to serve as a reliable partner in delivering high-quality Main and Miscellaneous Structural Steel Detailing solutions. With a dedicated U.S. base in Sheridan, Wyoming, and an experienced offshore production team in India, we support fabricators, contractors, architects, and construction firms across the United States and global markets.

Our leadership and technical team bring over 20 years of combined industry experience, including deep expertise in using SDS2 software. This allows us to produce fabrication-ready drawings and erection plans that meet international detailing standards and align with U.S. codes such as AISC, OSHA, and IBC.

From essential structural elements like beams, columns, and bracings to intricate miscellaneous components like stairs, handrails, ladders, and embeds — our drawings are built for accuracy, compliance, and constructibility.

What Sets Us Apart:

- ✓ Deep project experience across industrial, commercial, and infrastructure sectors
- ✓ Strong adherence to U.S. detailing codes and standards
- ✓ Focus on quality, clarity, and timely delivery
- ✓ Client-first approach with transparent communication and collaboration

At Cadesteel, we believe detailing is not just about drawings — it's about delivering confidence, precision, and efficiency that help our clients complete projects smoothly and successfully.

Let's build something great together.



WHAT WE OFFER

We provide tailored solutions designed to meet the unique needs of each project. With a comprehensive range of services and innovative technologies, Cadesteel delivers:-

- **Material Take-Offs (MTOs) & Advanced Bills of Material (ABMs):** Accurate material planning and cost estimation.
- **Detailed Shop Drawings:** For steel components such as columns, beams, bracings, trusses, stairs, ladders, handrails, guardrails, and more.
- **Erection Field Use Drawings:** Providing detailed erection and assembly drawings to guide construction and ensure smooth onsite implementation.
- **Anchor Bolt Arrangements, Concrete Embeds, Gratings, Floor Plates, and Grit Details:** Ensuring proper installation and functionality.
- **Unfolded Drawings & Single Part Drawings:** Streamlining pipe fabrication processes.
- **Pipe Rack, Monorail, and Crane Runway Supporting Structures:** Designed to meet all structural and weight capacity requirements.
- **Engineered Connection Design & Stamping:** Providing code-compliant connections that guarantee structural integrity.

Adherence to Industry Standards: We follow key standards and codes, including **AISC**, **BIS**, **OSHA**, **PIP**, and all applicable building codes, ensuring every project meets the highest levels of safety, quality, and regulatory compliance.

ABOUT US

Cadesteel Engineering Services LLC, a U.S. registered company based in Sheridan, Wyoming, was Established by experienced professionals in 2023, and formally incorporated in 2025, CADesteel continues to deliver U.S. standard structural steel detailing services, our leadership brings over 20 years of combined industry expertise in industrial, commercial, and infrastructure projects.

We specialize in fabrication-ready shop drawings, erection plans, and engineered connection details, strictly adhering to U.S. codes and standards such as AISC, OSHA, and IBC. Leveraging SDS2 software, we ensure precision, compliance, and timely delivery for every project.

OUR MISSION

To provide outstanding products and unsurpassed service that together deliver premium value to our customers.

OUR VISION

To develop relationships that make a positive difference in our customer's lives.

TEAM/LEADERSHIP

We are a team of highly experienced detailers, checkers, and project managers capable of handling projects of all sizes. Our team is familiar with leading structural detailing software such as SDS2, based on prior project involvement. We have 20+ team members with comprehensive knowledge of NISD, AISC, and OSHA standards. Our focus is on delivering quality shop and field drawings for structural steel framing on time and at competitive rates.

OUR EXPERIENCE & EXPERTISE

With over 20 years of extensive experience in structural steel detailing, our team at CADesteel Engineering Services LLC brings unmatched expertise and deep industry knowledge to every project. Throughout our careers, we have worked extensively with SDS2 software as well as other industry-leading tools, delivering precise, fabrication-ready shop drawings, erection plans, and engineered connection details.

Our hands-on experience spans a wide range of sectors including industrial, commercial, and infrastructure projects across the United States. This wealth of practical knowledge allows us to meet complex detailing requirements while strictly adhering to U.S. codes and standards such as AISC, OSHA, and IBC.

At CADesteel, we leverage this vast experience to ensure that every project we undertake is completed with the highest standards of accuracy, compliance, and constructibility—providing our clients with confidence and peace of mind.

OUR CORE VALUES



WHY CHOOSE CADESTEEL?

At CADesteel, we're more than a service provider—we're a reliable extension of your team. Our goal is to empower your projects with cost-effective, timely, and high-quality drafting, detailing, and engineering support, helping you scale operations without sacrificing quality or efficiency.

Cost Effectiveness

Focus on your core business—let us handle the rest. CADesteel operates on a pay-per-use model, providing expert support without the overhead of permanent staffing, expensive software, or infrastructure investment. You gain access to a skilled, scalable team while optimizing your budget and internal resources.

Fast Turnaround

Time is critical—and we deliver. CADesteel works in close coordination with your team, leveraging our extensive resources and structured workflows to meet even the most demanding deadlines. Our project planning and delivery model ensures you receive results quickly and accurately, without compromising on quality.

Industry Best Practices

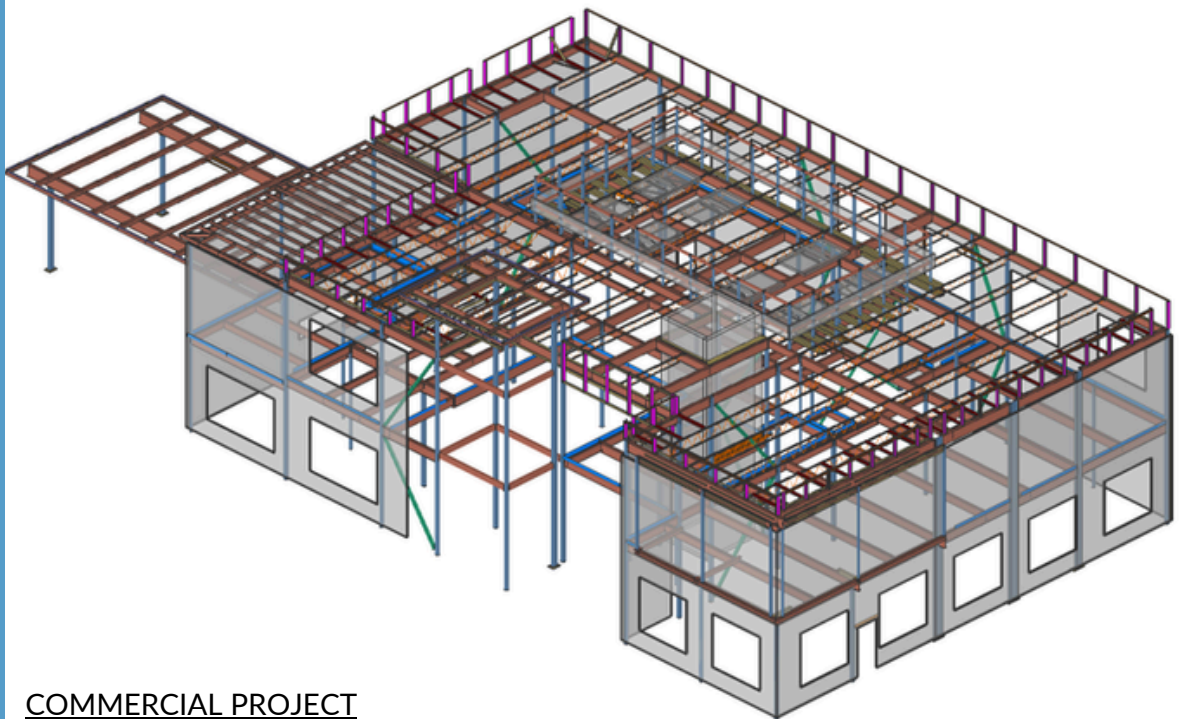
Stay ahead of the competition. CADesteel integrates global industry best practices with cutting-edge tools and deep technical expertise to deliver innovative, compliant, and highly efficient solutions. Our approach not only saves you time—it also gives you a distinct competitive edge in the market.

Proven Reliability

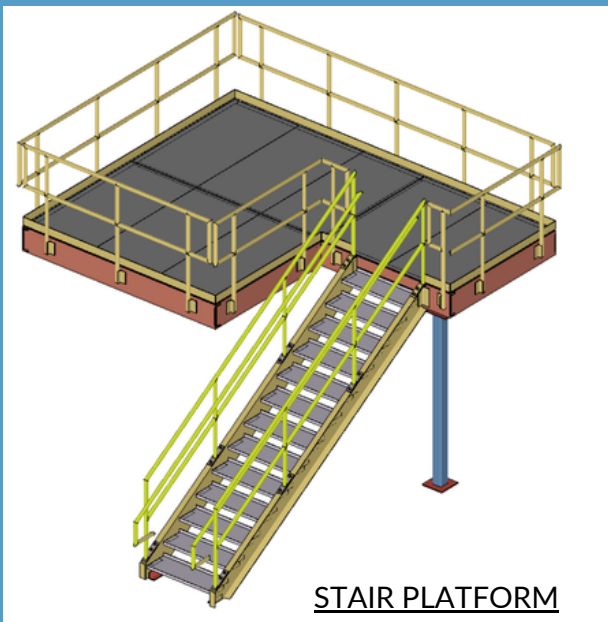
CADesteel stands for precision, reliability, and commitment. Our clients trust us for our attention to detail, timely delivery, and consistent results. We don't just meet expectations—we strive to exceed them, ensuring that every project runs smoothly from concept to completion.

PROJECTS PORTFOLIO

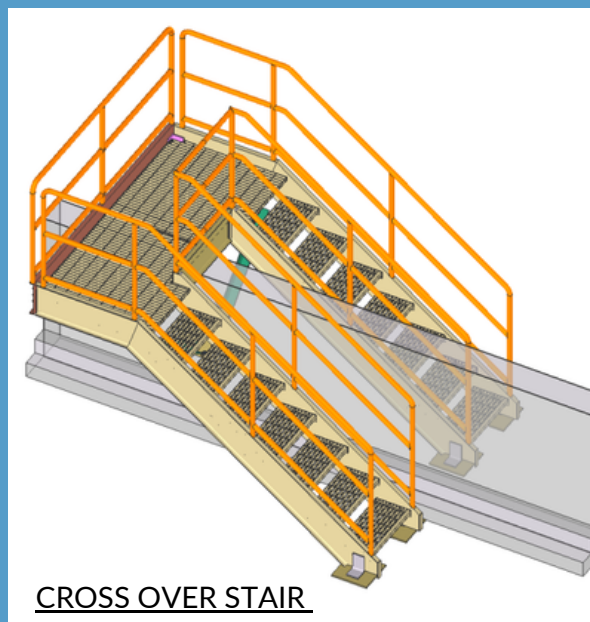
Our team has collective experience in detailing projects ranging from simple commercial to highly complex industrial structures. Below are a few sample projects executed by our team members:



COMMERCIAL PROJECT

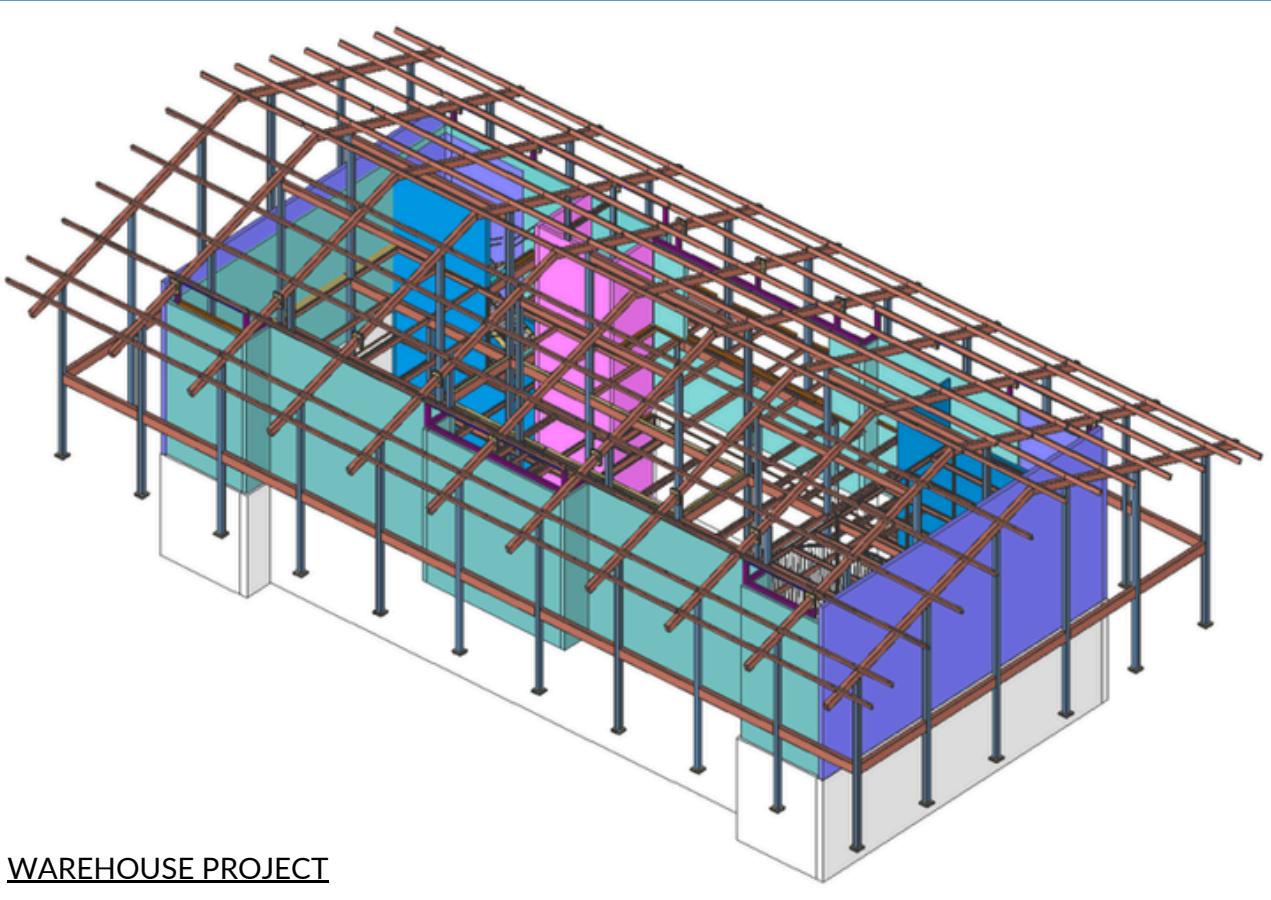


STAIR PLATFORM

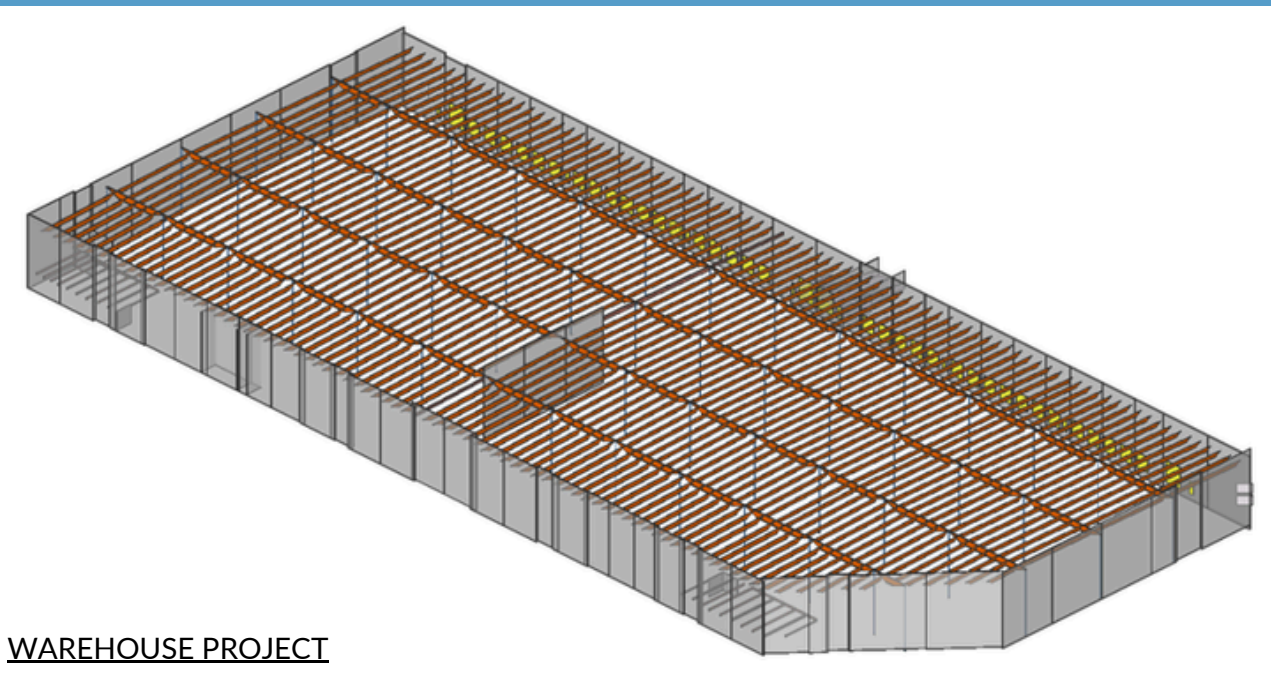


CROSS OVER STAIR

PROJECTS PORTFOLIO

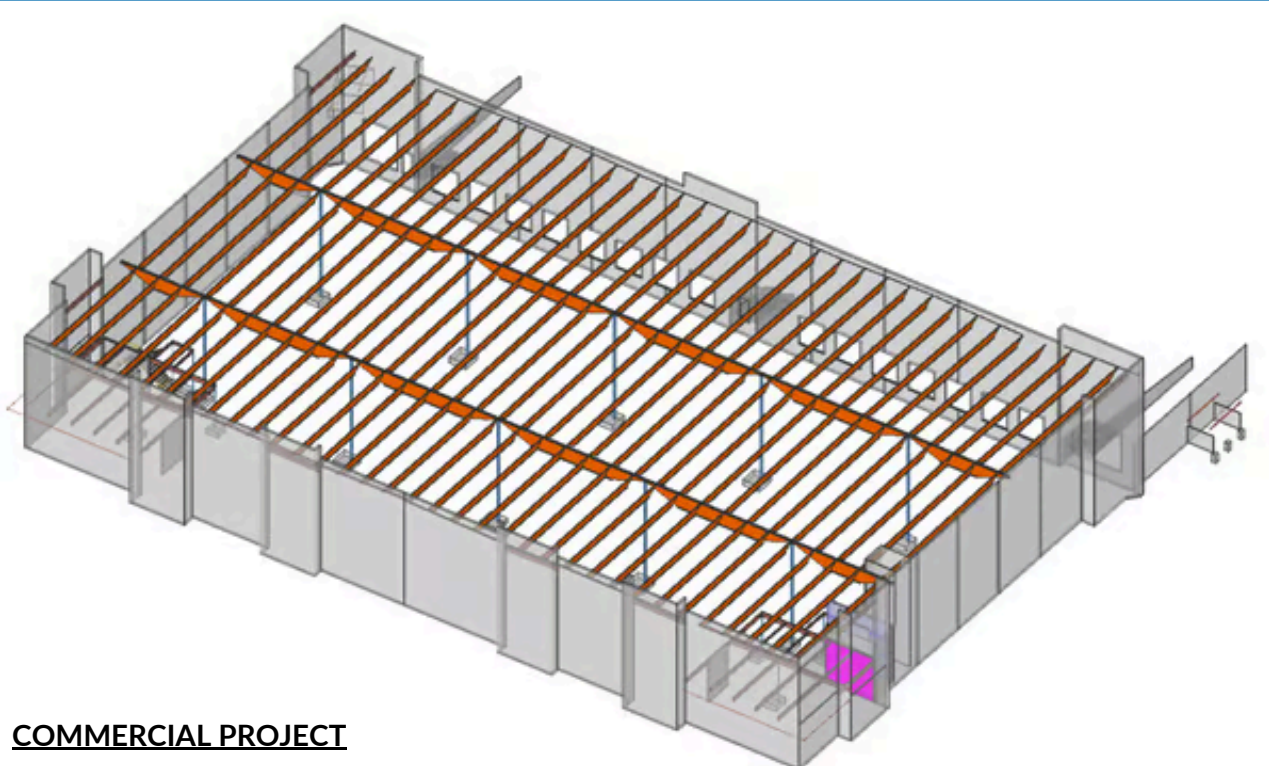


WAREHOUSE PROJECT

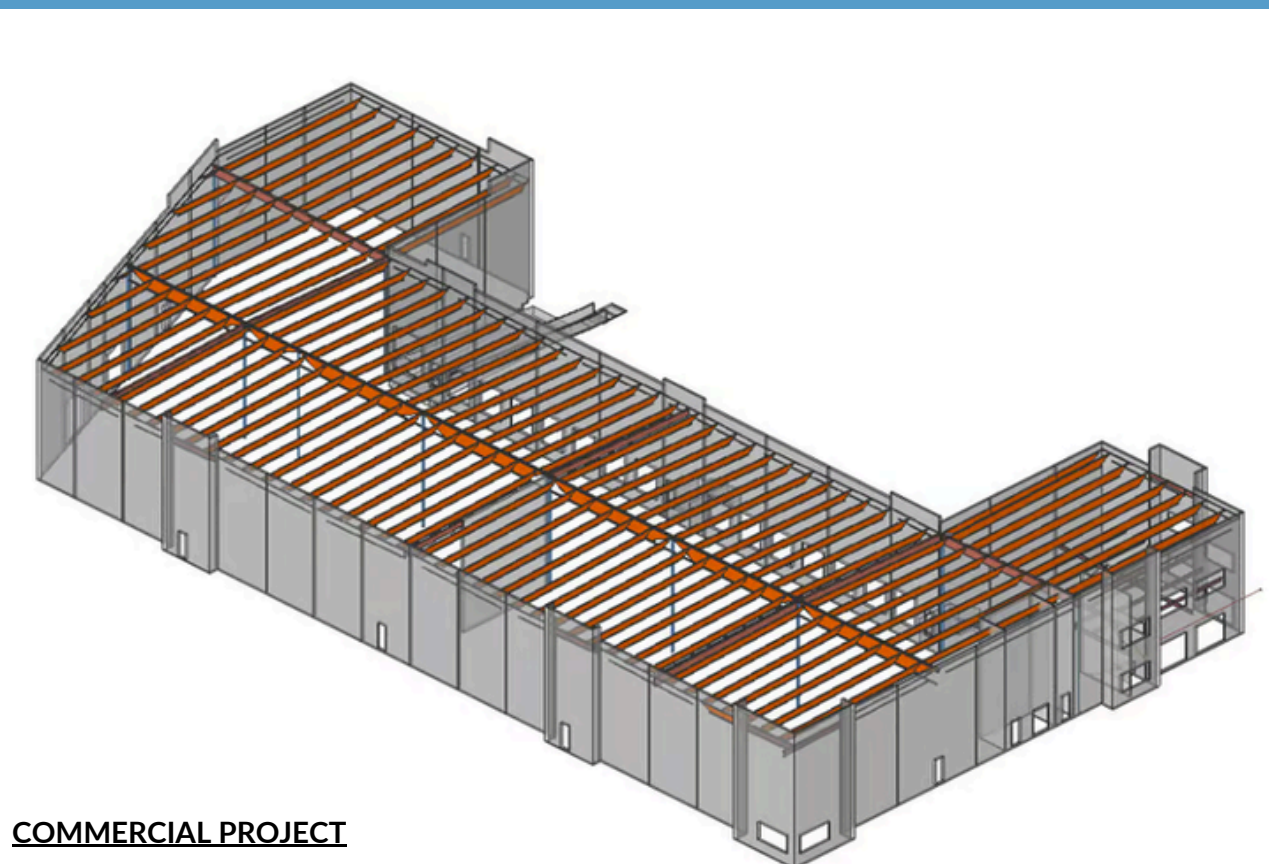


WAREHOUSE PROJECT

PROJECTS PORTFOLIO

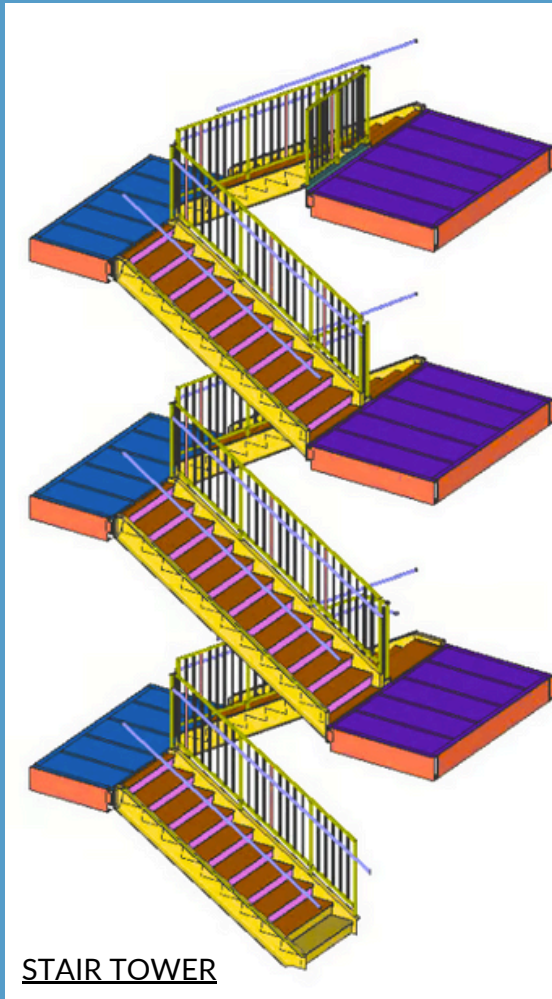


COMMERCIAL PROJECT

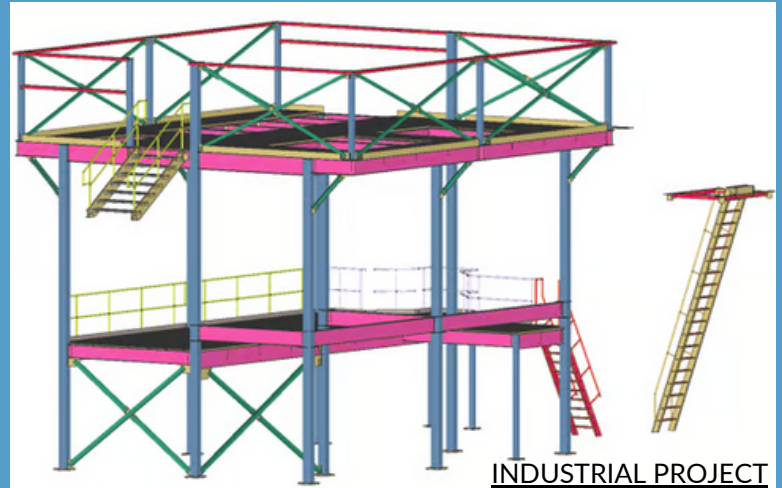


COMMERCIAL PROJECT

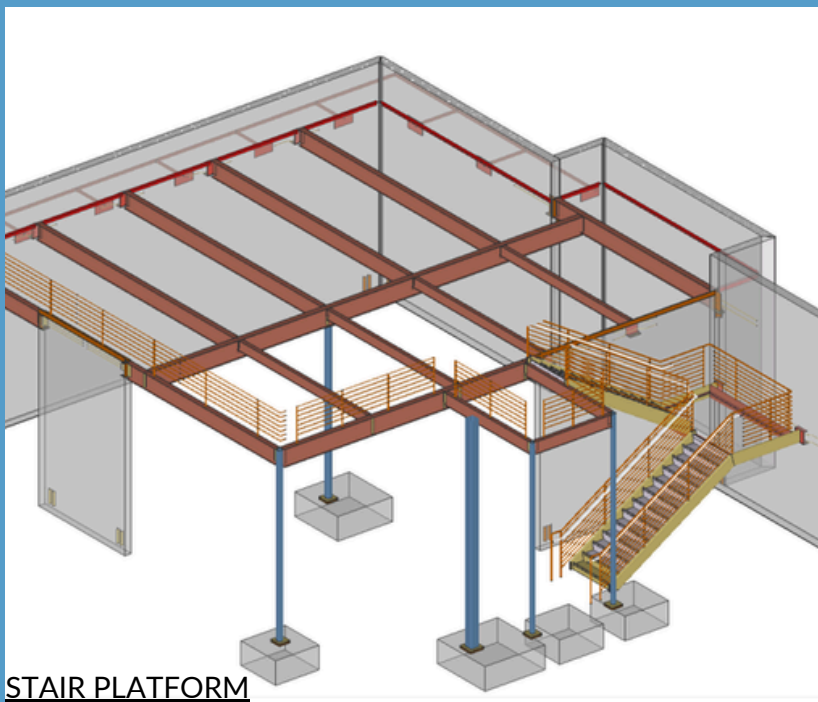
PROJECTS PORTFOLIO



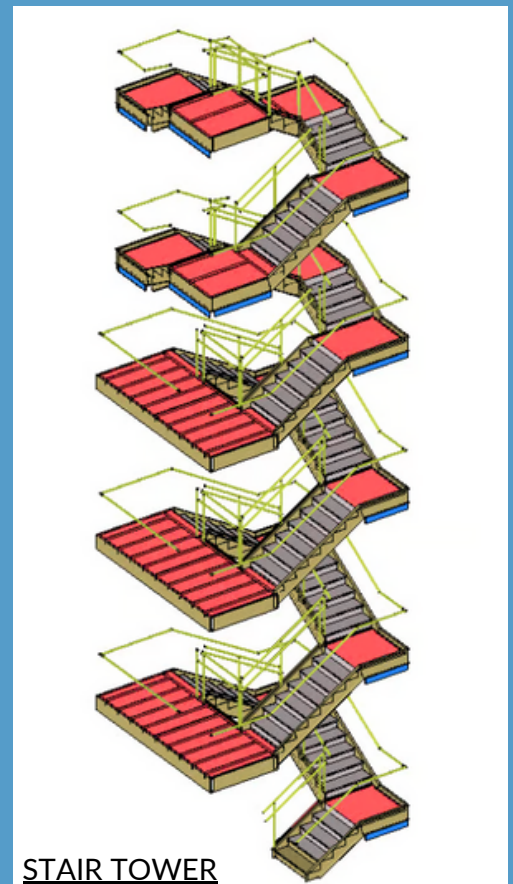
STAIR TOWER



INDUSTRIAL PROJECT

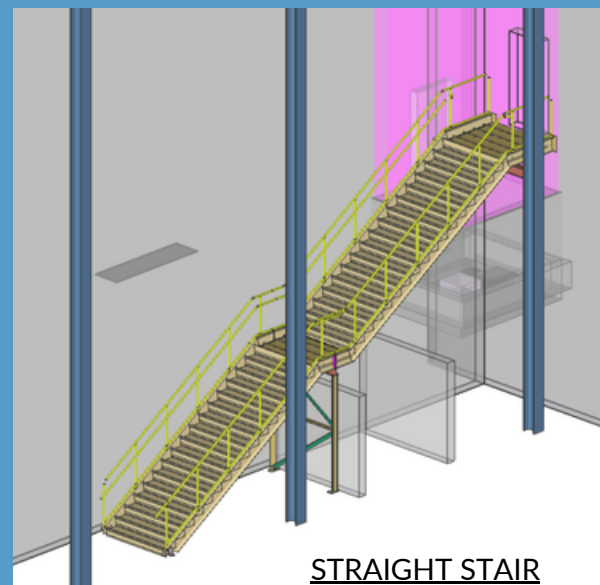
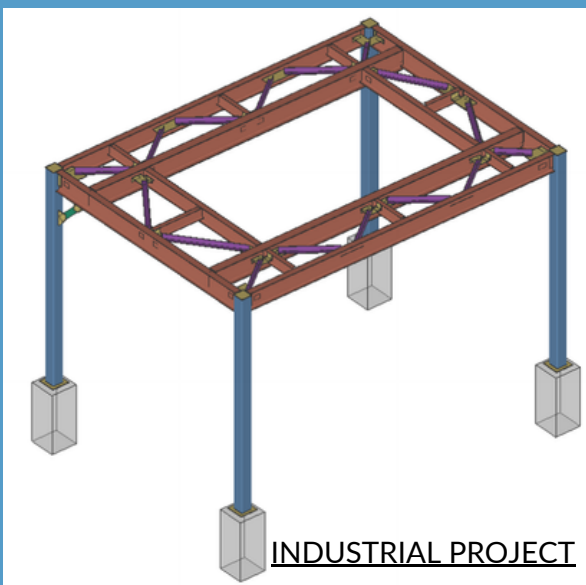
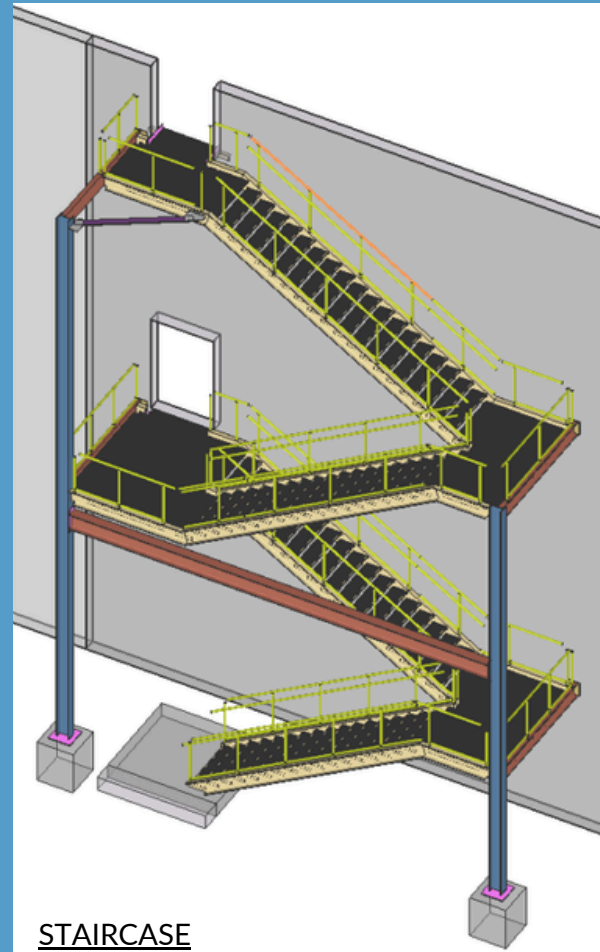
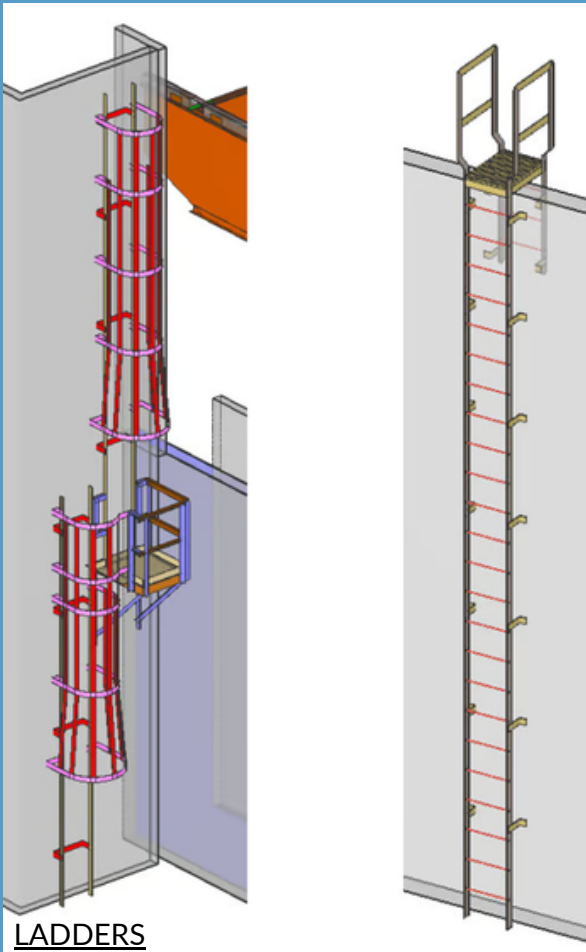


STAIR PLATFORM



STAIR TOWER

PROJECTS PORTFOLIO

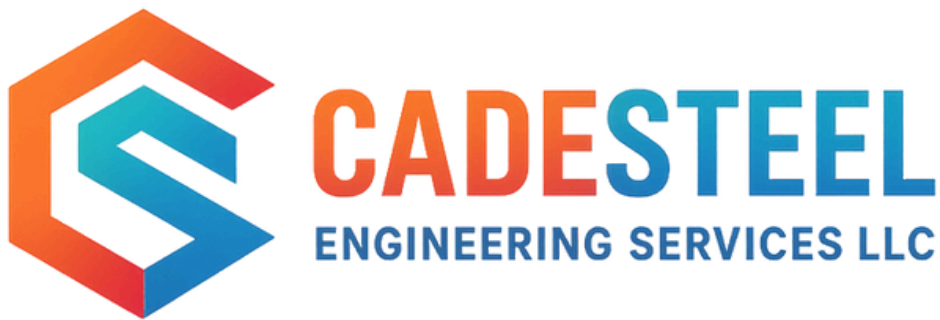


ENGAGEMENT MODELS

- Lump sum
- Tonnage of steel
- Hourly basis
- Resources model

DELIVERABLES

- DXF files (.dxf)
- DWG files (.dwg)
- PDF files (.pdf)
- CNC files (.nc1)
- KISS files (.kss)
- EJE files (.eje)
- IFC files (.ifc)



Contact Us

support@cadesteel.com

+1 (989) 564-2060

www.cadesteel.com

VISIT US AT

 USA Office

30 N Gould St, STE R,

Sheridan, WY 82801, USA