

TIMELESS TRANSCENDENCE

Showcased December '24

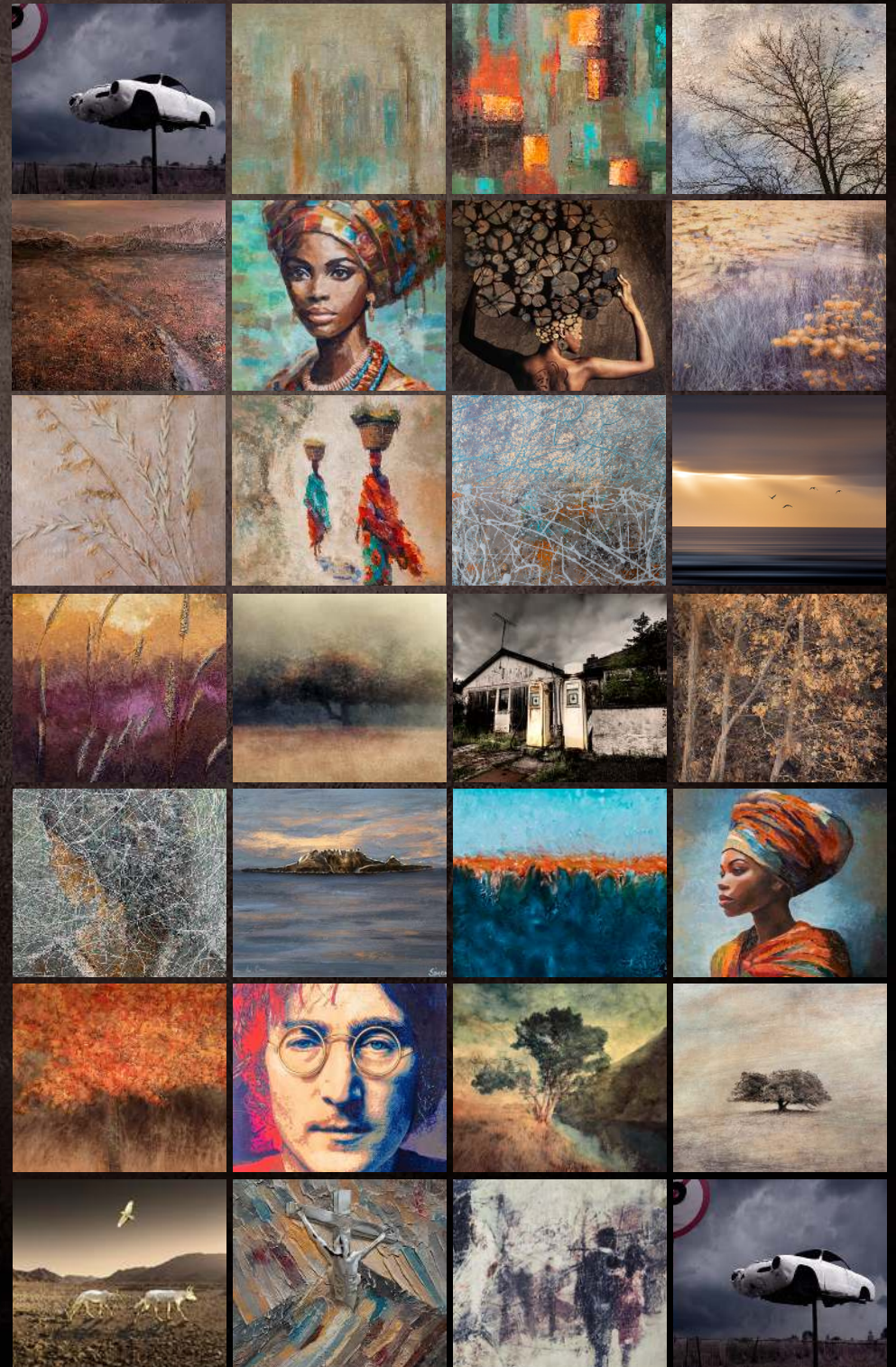


OSNER
GALLERY

HOUT BAY | CAPE TOWN

TIMELESS TRANSCENDENCE

Samantha Lee Osner
Simon Shone
Martin Osner





HARMONY IN BLOOM

Samantha Lee Osner

Limited Edition (3)

120 x 80cm

Mixed media - Acrylic and Ink
on Canvas



AUTUMN BLAZE



Samantha Lee Osner
Limited Edition (20) | 89cm x 58cm
Paint on Fine Art Paper

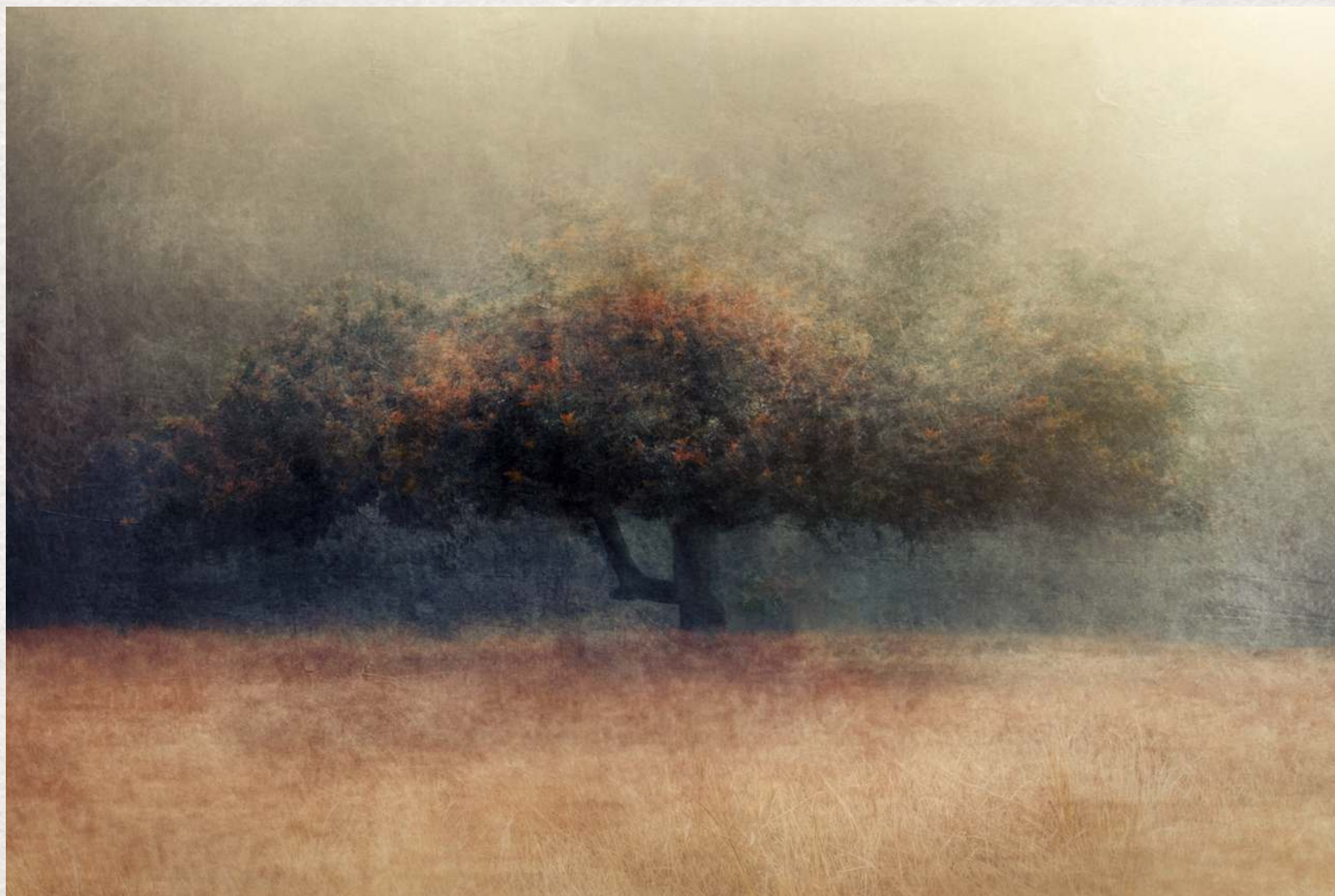




PATTERN OF THE UNSPOKEN

Martin Osner
Original Artwork
51cm x 38.5cm
Paint on Cotton Rag

HOLLOW WHISPER



Samantha Lee Osner
Limited Edition (7) | 94cm x 74cm
Ink and Paint on Fine Art Paper



THREADS OF ALCHEMY

Martin Osner
Original Artwork
64cm x 80cm
Paint on Metal (Aluminium)



GOLDEN GIRLS
AFRICAN QUEEN COLLECTION



Martin Osner
Original Artwork | 57cm x 65cm
Paint on Canvas



CITY OF GOLD

Martin Osner
Original Artwork
65cm x 65cm
Paint on Metal
(Aluminium)





GOLDEN TWILIGHT

Samantha Lee Osner

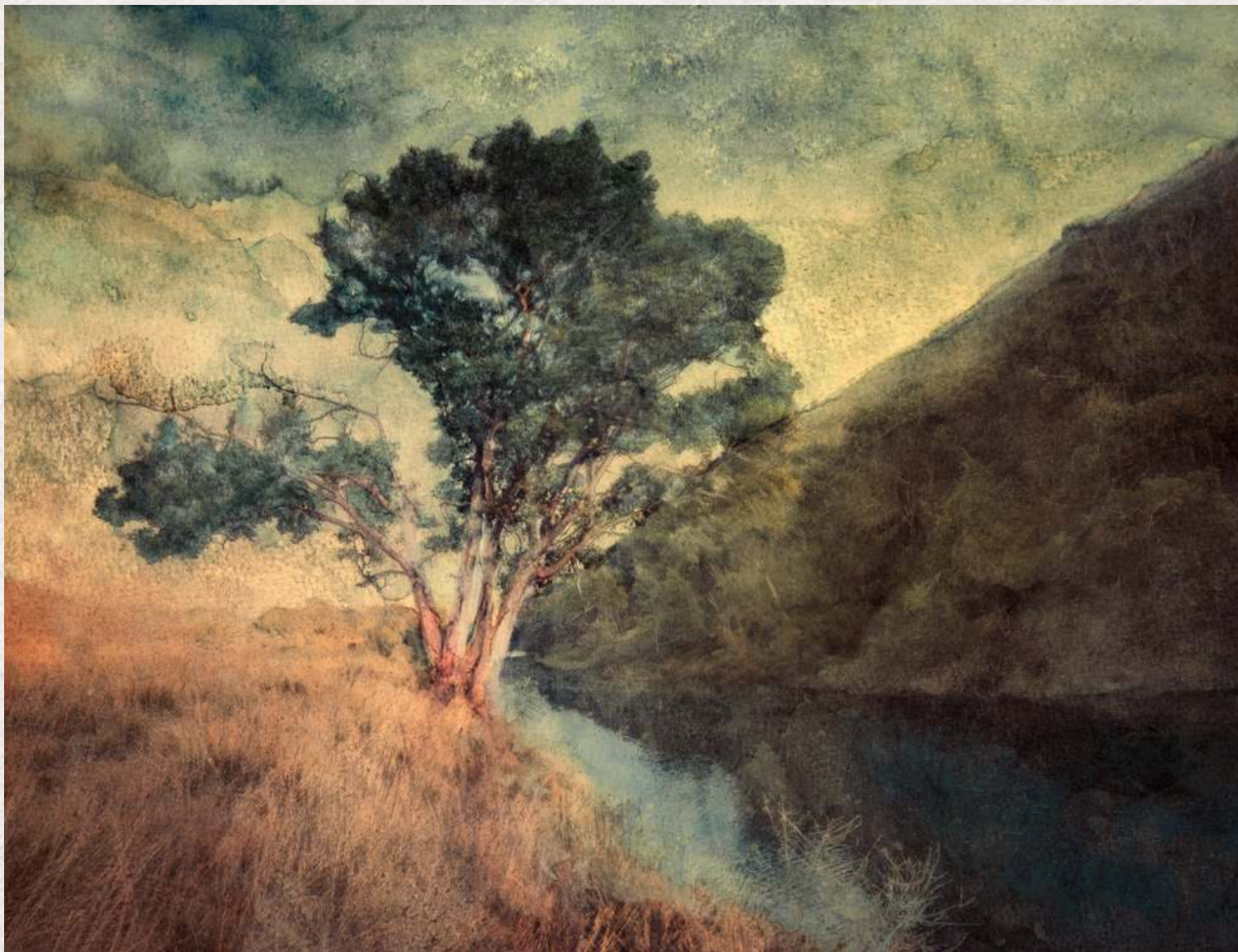
Original Artwork

41 X 54cm

Paint on Metal (Aluminium)



ECHOES OF THE VALLEY



Martin Osner
Edition (20) | 82 x 64cm
Watercolour technique on Fine Art Paper





SHADOWS OF SILENCE

Samantha Lee Osner
Limited Edition (12)

103 x 93cm

Paint on Fine Art Paper





TRANSCENDENCE

Samantha Lee Osner
Limited Edition (7)

95.5cm x 95.5cm

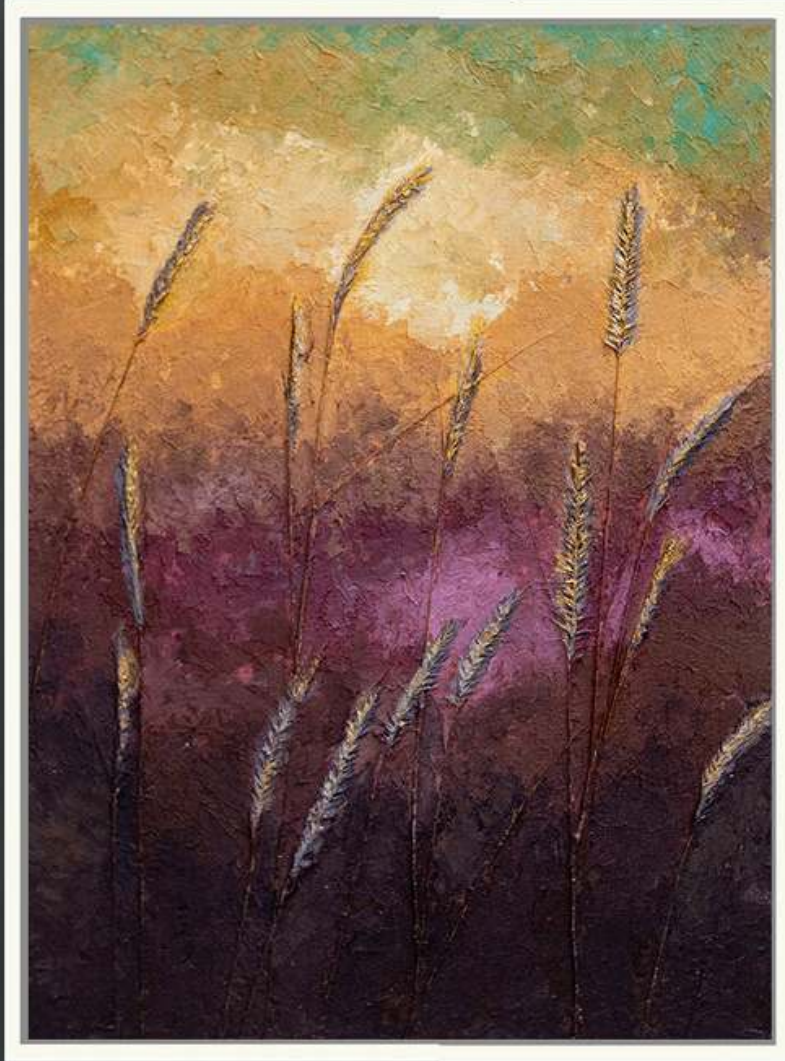
Paint & Ink on Canvas



TIMELESS

Martin Osner
Original Artwork
102.5cm x 82.5cm
Acrylic and ink on canvas





WHISPERS OF DAWN

Martin Osner
Original Artwork
75cm x 55cm
Paint on metal



NOBUHLE
AFRICAN QUEEN COLLECTION

Martin Osner
Original | 105cm x 87.5cm
Paint and ink on Canvas



BLOSSOM

Samantha Lee Osner
Original Artwork
30 x 20cm
Paint on Metal



SOPHIA



Martin Osner
Original Artwork | 54cm x 54cm
Paint on metal

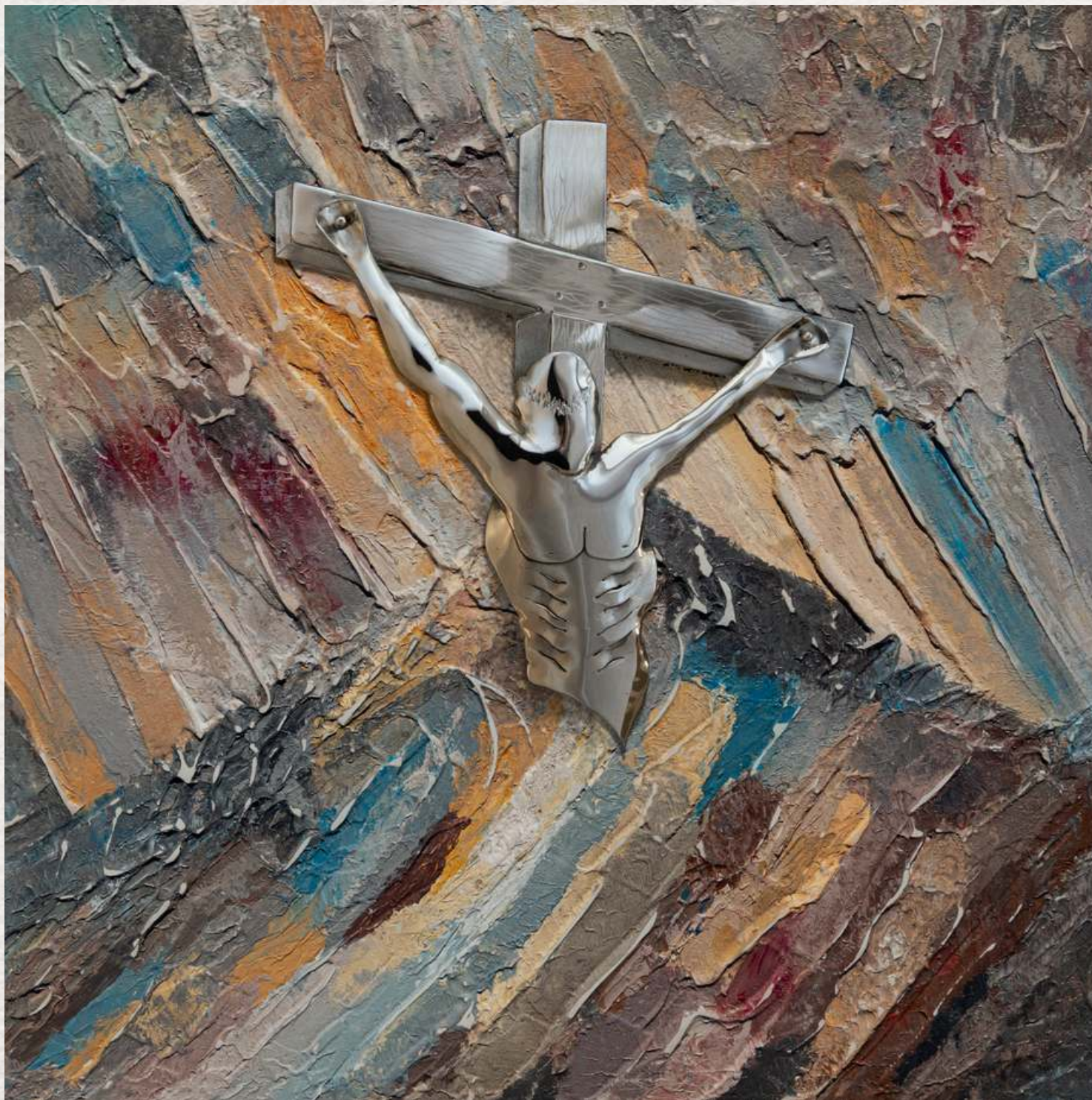


ABSTRACT ALCHEMY
COLLECTION

Martin Osner
Original Artworks
20cm x 14cm
Paint on Metal

email info@osnergallery.com
for details





HEAVENLY ASCENT

Simon Shone
& Martin Osner

Original Artwork

58cm x 58cm

Nickel plated brass
sculpture on a textured
acrylic mixed media
painting done on Metal
(Aluminium)





HEAVENLY AURA

Samantha Lee Osner
180cm x 66cm
Giclée Print on Fine Art Paper





SHADOWS OF MEMORY

Martin Osner
Original Artwork
18cm x 15.3cm
Transfer & Encaustic Medium

email info@osnergallery.com
for details



ABANDONED #1



Martin Osner
Limited Edition (35) | 100cm x 77cm
Giclée Print on Fine Art Paper

ABANDONED #17



Martin Osner
Limited Edition (35) | 100cm x 77cm
Giclée Print on Fine Art Paper

MOONLIGHT OVER TABLE BAY



Simon Shone & Samantha Lee Osner
Limited Edition (15) | 36cm x 27cm
Nickel plated sculpture on painted metal (Aluminium)



ECHOES OF THE GOLDEN LAND

Simon Shone & Martin Osner
Limited Edition | 10
61cm x 137cm

18-karat gold-plated sculptures on a giclée print





ADORN NO.2

Martin Osner
Limited Edition | 20
141cm x 110cm
Paint on Fine Art Paper





GOLDEN VISION

Simon Shone & Martin Osner

Limited Edition | 10

40cm x 60cm

18-karat Gold sculptured spectacles
on an ink and watercoloured
painting

Martin Osner

Simon Shone





THANDIWE
AFRICAN QUEEN COLLECTION

Martin Osner
Original Artwork
78cm X 60cm
Acrylic and Ink on Canvas





FORTITUDE
PRÈCIS COLLECTION

Samantha Lee Osner
Edition (3)

180cm x 150cm

Ink, Oil and Acrylic Paint on Canvas



As the daughter of a fine art photographer, Samantha grew up surrounded by; cameras, lenses, studios and darkrooms, so it seems her fate was a fait accompli.

To her, photography is about capturing the beauty of a moment that lasts forever, a moment in time that can never be repeated.

She is fortunate to have found her passion at an early age under the guidance and mentorship of her father, fine art photographer and artist Martin Osner.

After studying at his photography school for several years, she started experimenting with art photography and was offered her first exhibition in 2016.

Lights, camera, action and her career as an art photographer had begun.

Samantha's stunning portfolio includes landscapes, portraits and mixed media prints in both limited and open editions; she is an artist who portrays minimalism, femininity, and elegance throughout her work.



SAMANTHA LEE OSNER

*"SIMPLICITY IS THE ULTIMATE SOPHISTICATION."
— LEONARDO DA VINCI*



Simon Shone is a master goldsmith, craftsman, and sculptor whose career spans over three decades. Trained under a renowned German designer, he has developed a signature style that captures the essence of form and movement, often inspired by the beauty of wildlife and nature. Working with precious metals like gold, silver, and bronze, Simon transforms raw materials into captivating conversation pieces that transcend functionality and evoke deep

emotional responses. Since 1987, his exceptional artistry has earned him a distinguished reputation, with works commissioned by international icons, including sports legends Ernie Els and Lance Armstrong, as well as influential politicians and celebrities. Passionate about exploring the possibilities of form and material, Simon continually innovates within the traditions of goldsmithing and sculpture, crafting timeless works that celebrate the artistry of hand-crafted design. Simon's collaboration with Martin

Osner under "African Art Fusion" has opened new avenues for artistic exploration, blending Simon's sculptural expertise with Martin's conceptual photography and fine art. Together, they create works that celebrate the richness of African culture and landscapes, seamlessly integrating sculptural elements with visual storytelling. Their combined talents are showcased at their exclusive gallery in the Clock Tower at Cape Town's Waterfront district, offering a unique fusion of sculpture



SIMON SHONE

"THROUGH MY CRAFT, I AIM TO EVOKE EMOTION AND CELEBRATE TIMELESS DESIGN".

and fine art that honours the vibrant spirit of Africa and pushes the boundaries of creative expression. Through this partnership, Simon continues to craft art that resonates with the soul, merging the physical and poetic in profound and innovative ways.



My artistic journey has been a dynamic blend of traditional painting and fine art photography, evolving from limited editions to unique, original artworks. Photography entered my life unexpectedly in 1984, altering my path and becoming a medium that allowed me to embrace creativity while addressing my parents' concerns about the challenges of an art career. It became the foundation for an extraordinary

adventure, blending artistry with storytelling. Over the years, my approach has been shaped by simplicity, honesty, and self-discovery. Everyday life is my muse, and I see all subjects as potential compositions. While I view the world through a painter's eyes, my camera and lens are my tools, allowing me to transform light and composition into expressive works. My process is guided by emotion and experimentation, free from constraints, and often blending

photography with mixed media to create art that evolves organically. Today, I feel I have come full circle, equally at home behind the lens or holding a palette knife. I believe my path has been guided by a caring Creator, and my passion for art and photography is something I could never relinquish. It's not just what I do—it's who I am.



MARTIN OSNER

*"ART AND PHOTOGRAPHY ARE NOT
JUST WHAT I DO—THEY'RE WHO I
AM."*



THE OSNER GALLERY

14 Luisa Way, Hout Bay, Cape Town.

Landline +27 (0) 21 7906494 | Mobile +27 (0) 834721717 | info@osnergallery.com | www.osnergallery.com

