



SERENDIPITY

EXPERIMENTAL ART PHOTOGRAPHY SHOWCASE BY
MARTIN & SAMANTHA LEE OSNER

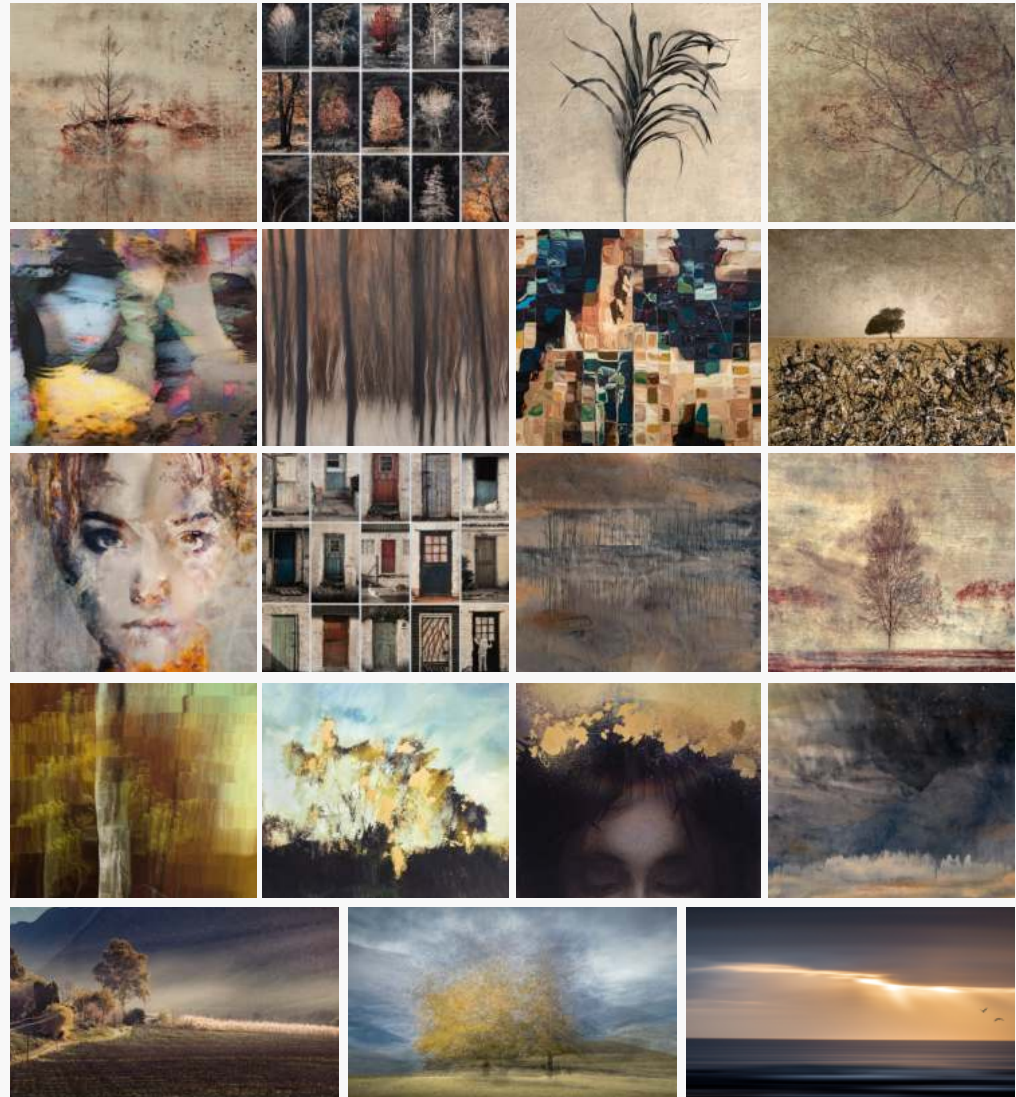


OSNER GALLERY

SERENDIPITY

10-30 OCTOBER 2021

An exhibition of experimental photography by Martin and Samantha Lee Osner, where the camera has been used as one instrument on the workbench of art. Combined with traditional art mediums like paint, transfers, overlays and gold leafing, photography has been utilised to create unique limited edition art pieces.



NATURAL DESIGN | MARTIN OSNER

124cm x 84cm
R 9900







BEHIND CLOSED DOORS | SAMANTHA LEE OSNER

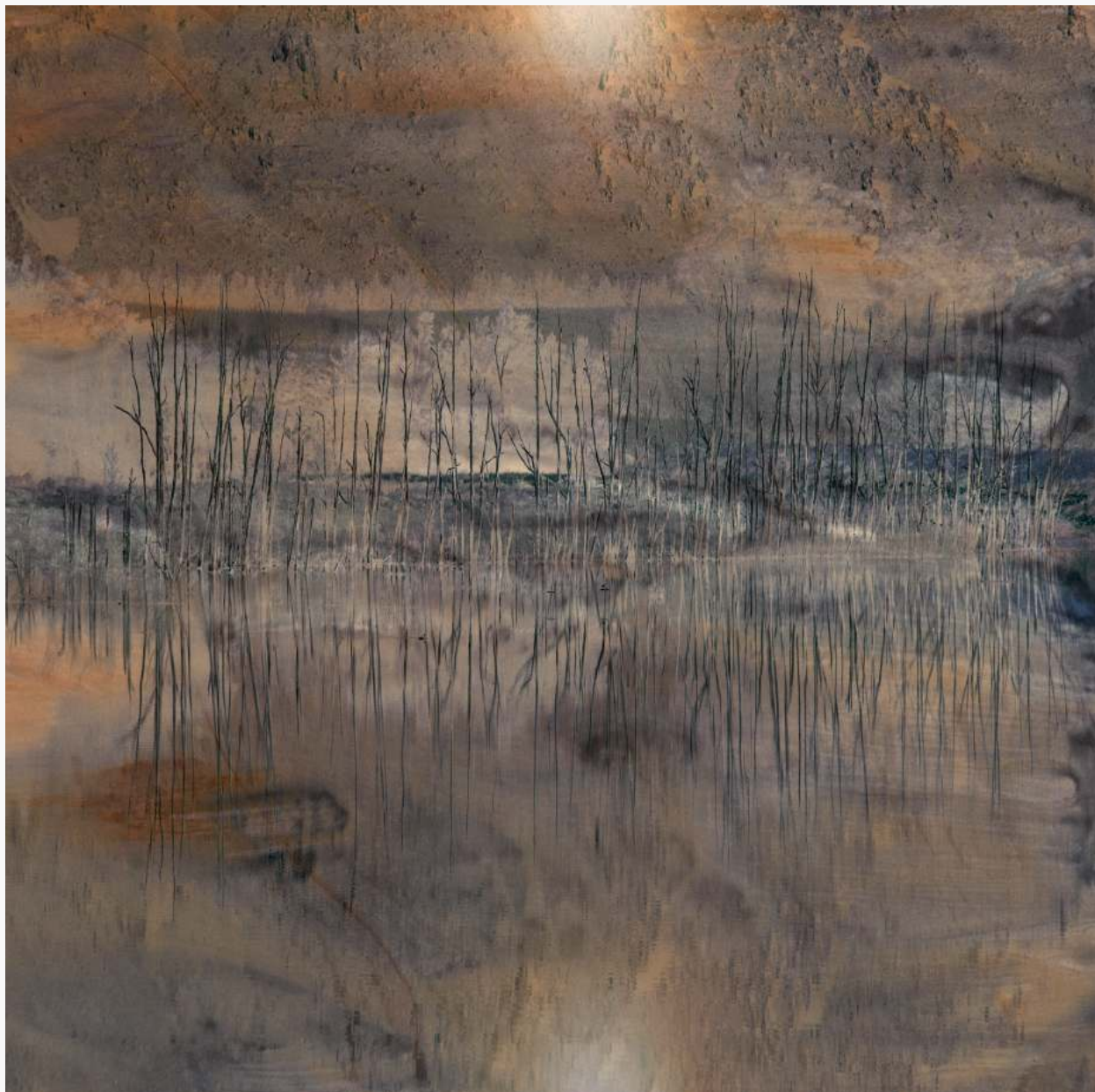
Ltd Ed (15) | 80cm x 80cm | R 9500

A mixed-media montage of doors photographed in a fishing village. A beautiful grungy and textured piece with a pop of colour that has been embellished by hand. An artwork that is full of character and steeped in culture! This photo montage was created using a combination of photography, black powder transfers and watercolours.



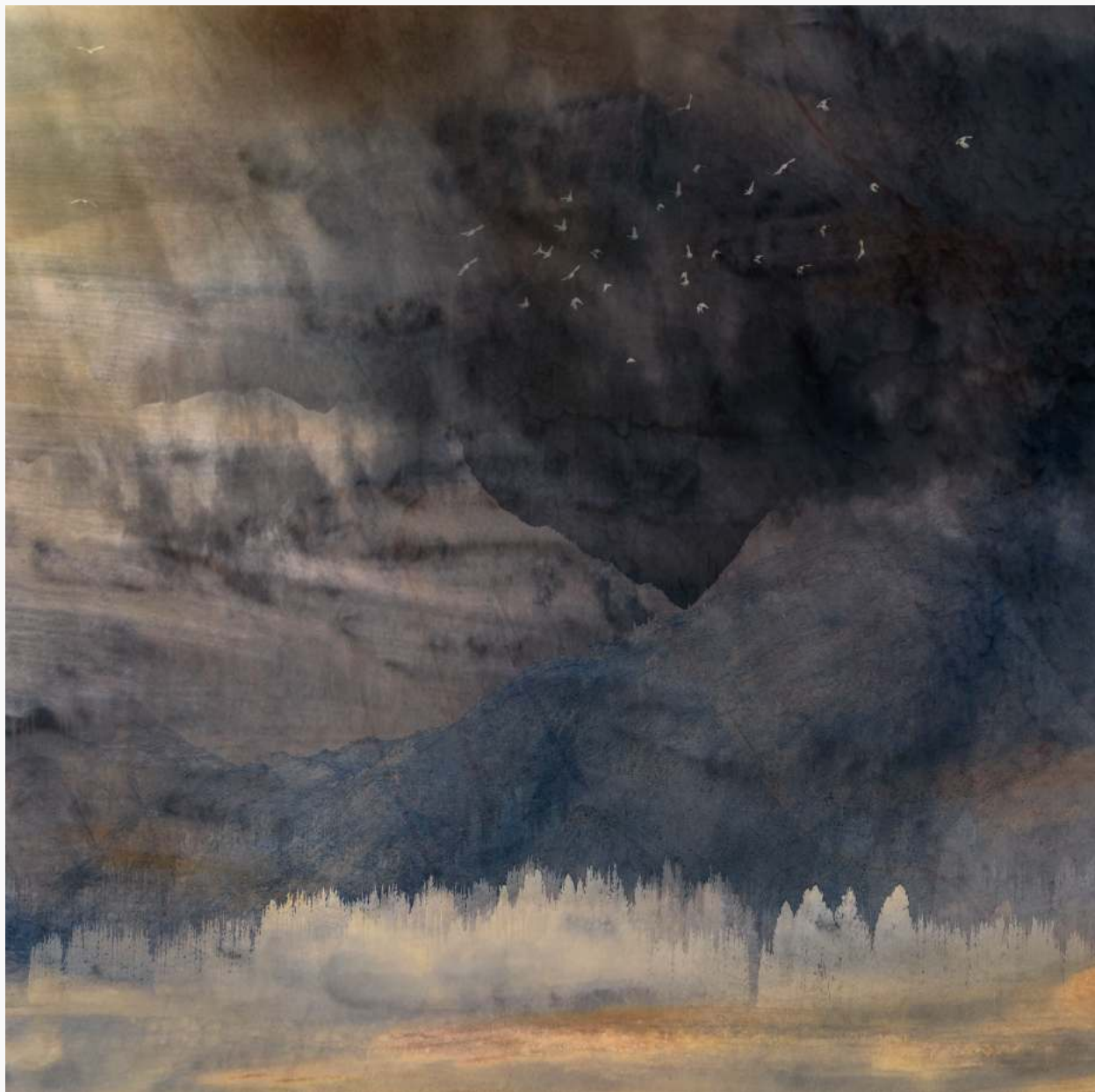
SECLUSE | SAMANTHA LEE OSNER
Ltd Ed (15) | 60cm x 60cm | R 7900





BEAU NEXUS NO.1 | SAMANTHA LEE OSNER

Ltd Ed (15) | 110cm x 110cm | R 13900



BEAU NEXUS NO.2 | SAMANTHA LEE OSNER

Ltd Ed (15) | 110cm x 110cm | R 13900

A limited-edition abstract print of an ethereal forest captured in beautiful midnight tones emulates a fairytale and highlights nature's beauty through the use of multiple layers and textures and solarization.





Delicate mixed media collection with inscriptions "memoirs" by the artist to nature.

MEMOIR NO.1 | SAMANTHA LEE OSNER
Ltd Ed (15) | 104cm x 85cm | R 14900



MEMOIR NO.2 | SAMANTHA LEE OSNER
Ltd Ed (15) | 104cm x 85cm | R 14900



I love to sit in silence beneath a shady tree and listen to the song
of birds and to the buzz of bees.

I love to sit in silence and watch the clouds go by and then read a
book or hear a song and hear the wild bird cry.

I love to sit in silence when the day is almost done and see
beyond the distant hill the paint glow of the sun.

I love to sit in silence in the evening twilight and listen to the
whippoorwill sing with all its might.

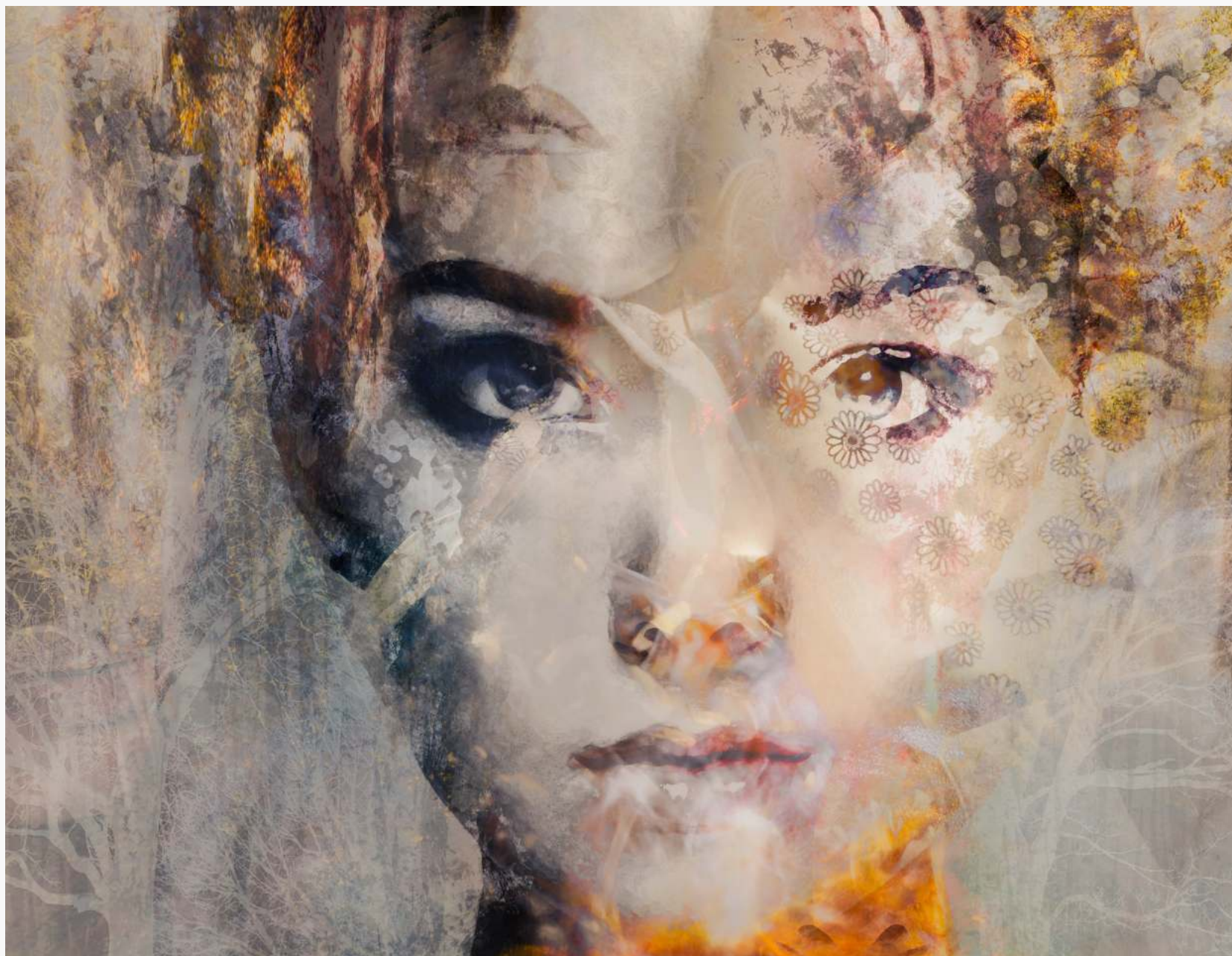
I love to sit in silence beneath the starry night and pray to all in
earnestness to live in silence all the while.

author unknown



MEMOIR NO.3 | SAMANTHA LEE OSNER
Ltd Ed (15) | 104cm x 85cm | R 14900





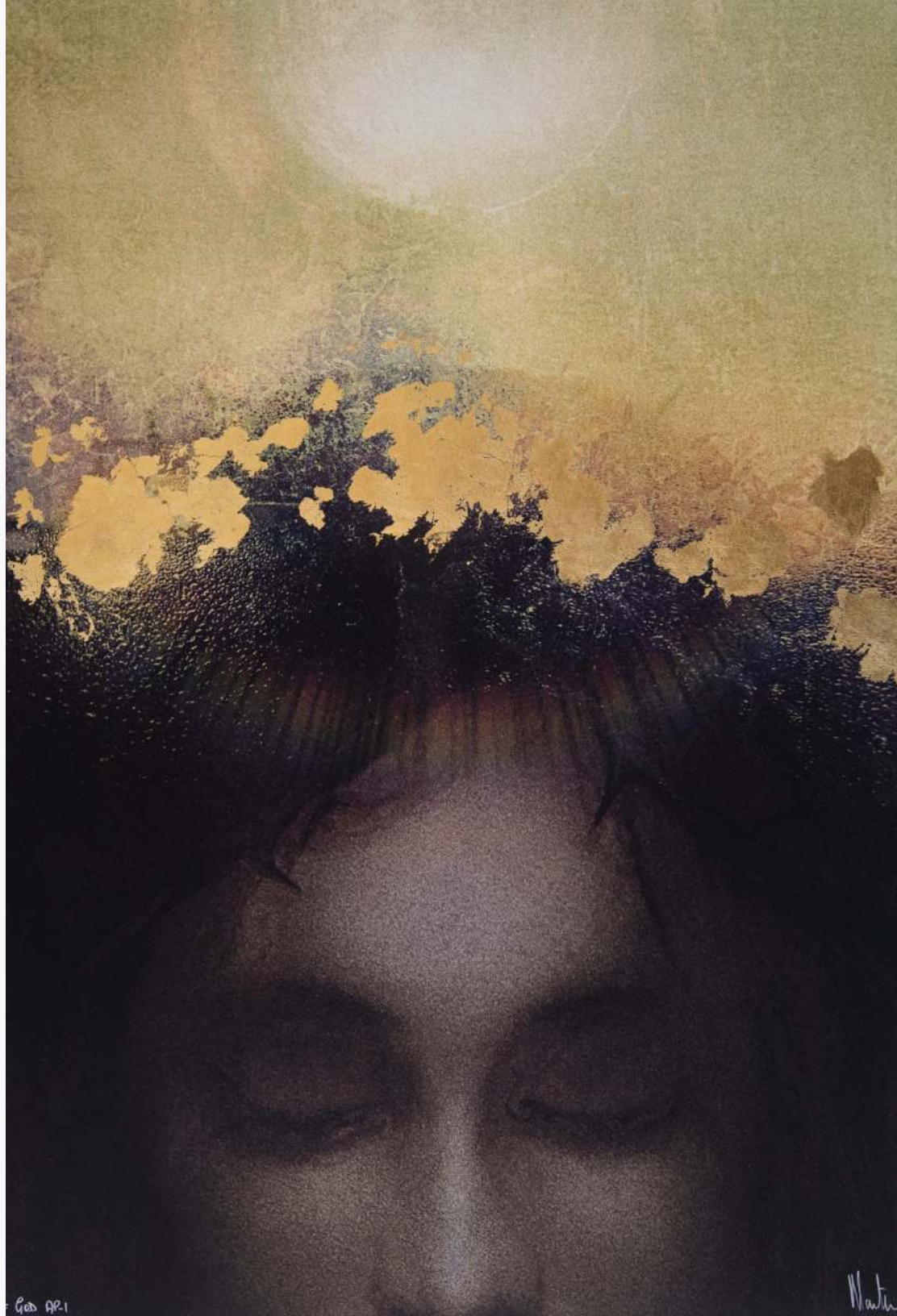
Nostalgic recollections and memorable fanciers of the past.

REMINENCE NO.1 | MARTIN OSNER

Mixed media Ltd Ed (15) | 104cm x 85cm | R 35 000

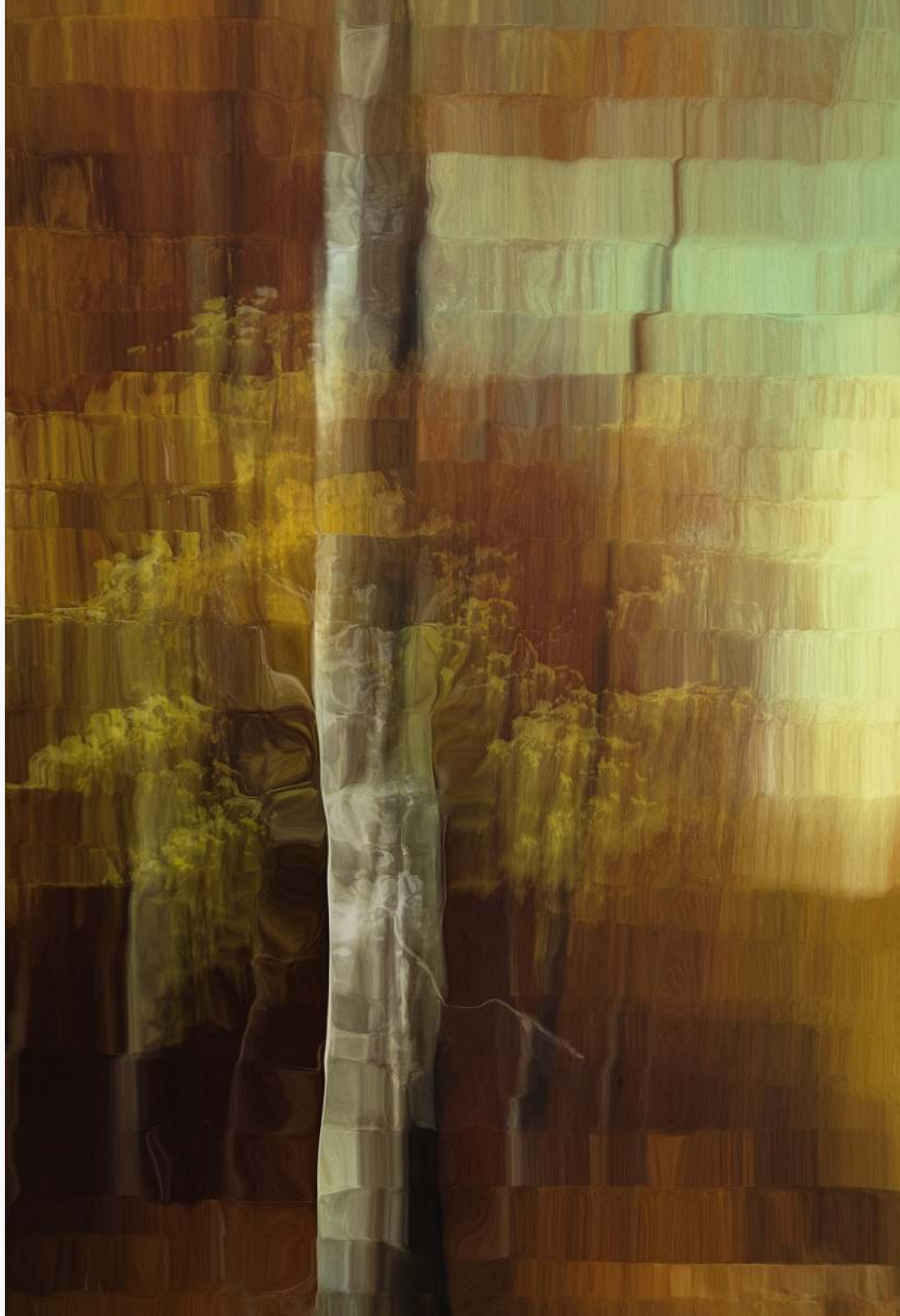
SON OF GOD | MARTIN OSNER

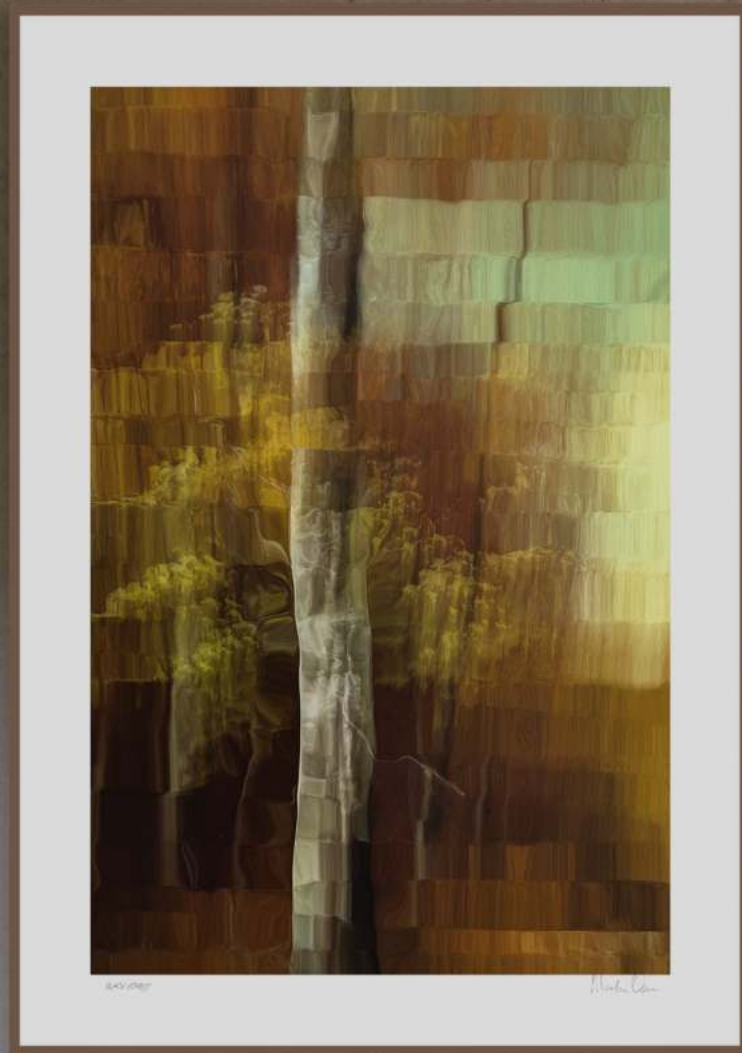
Embellished with gold leaf
Ltd Ed (20) | 64cm x 50cm | R 7900

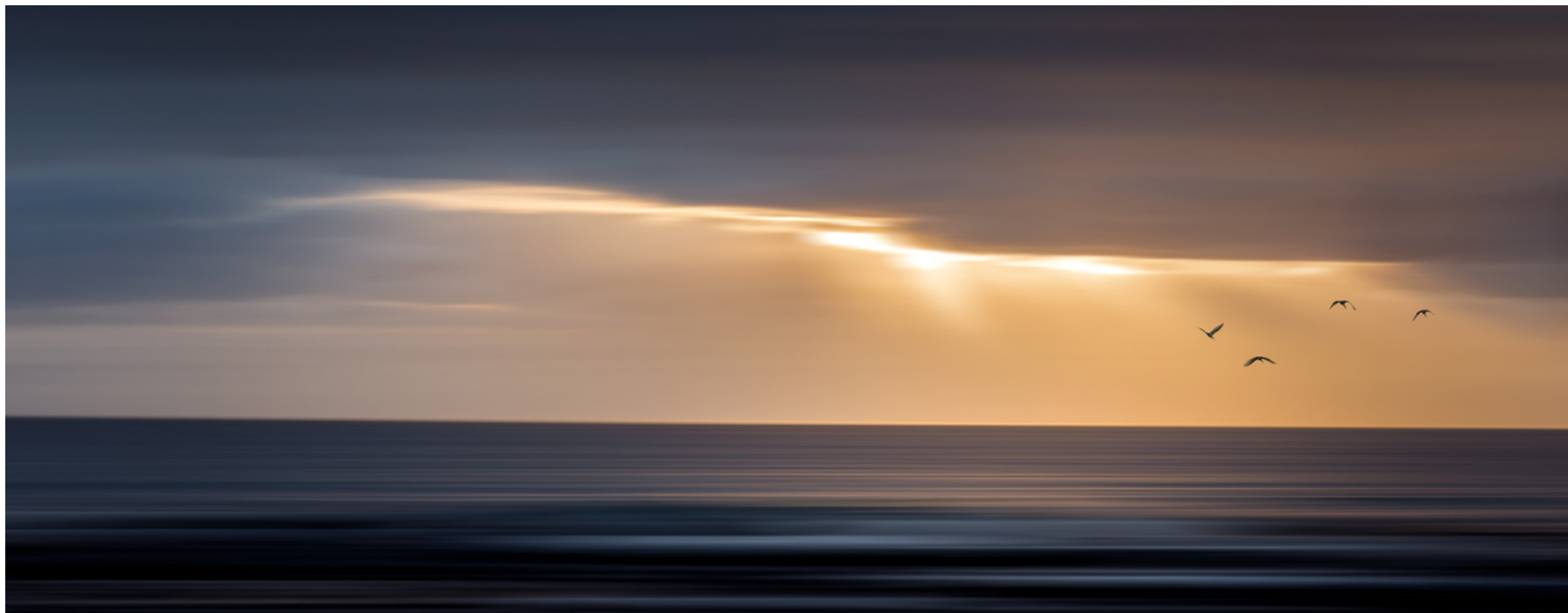


BLACKWOOD FOREST | MARTIN OSNER

Cubist Impression | Ltd Ed (20) | 123cm x 86cm | R 14500







An abstract impression photographed over the Atlantic ocean as birds are seen flying through the last light of the day.

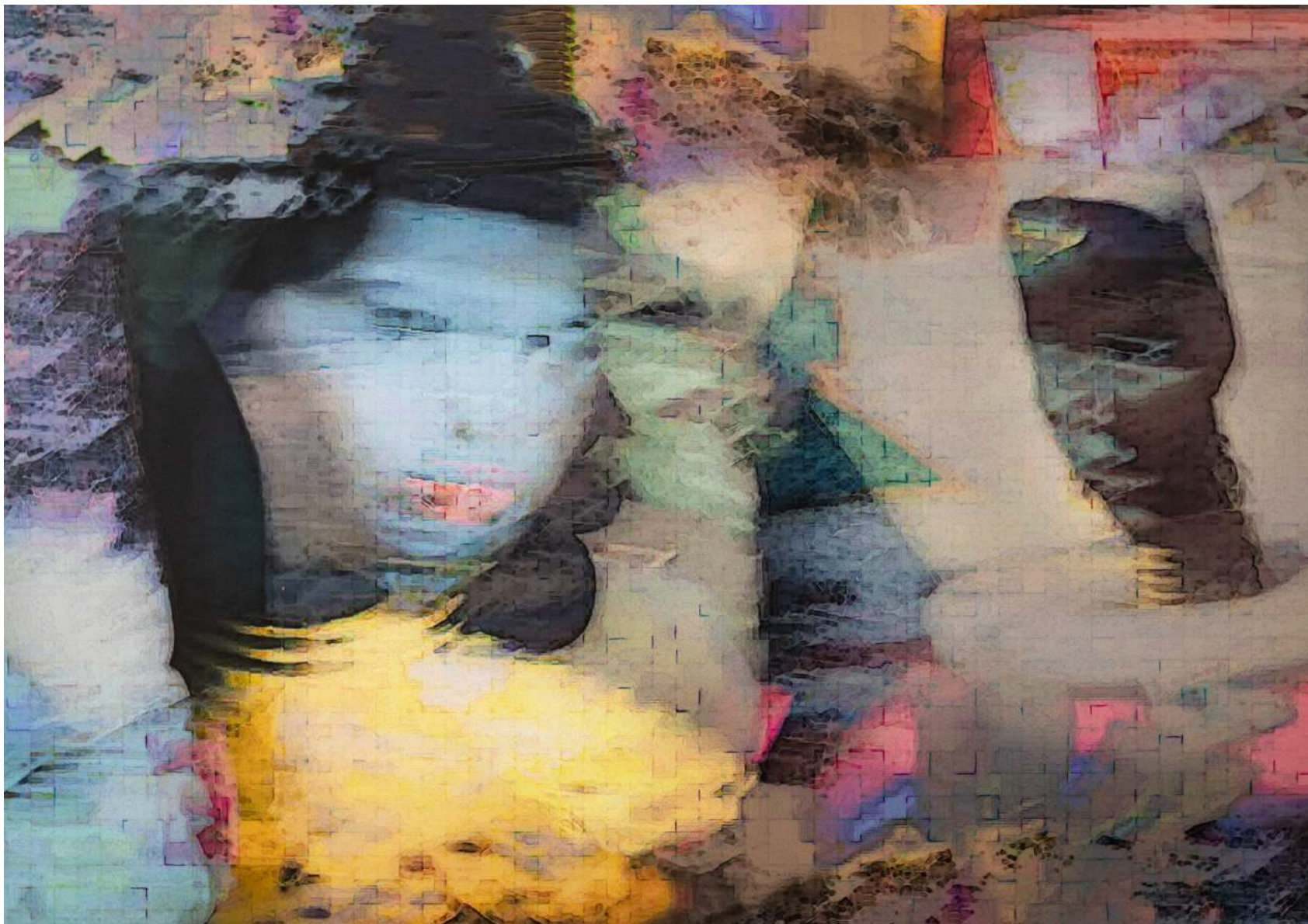
HEAVENLY AURA | SAMANTHA LEE OSNER

140cm x 66cm | R13 900



MAJESTIC HOMESTEAD | MARTIN OSNER

140cm x 66cm | R13 900



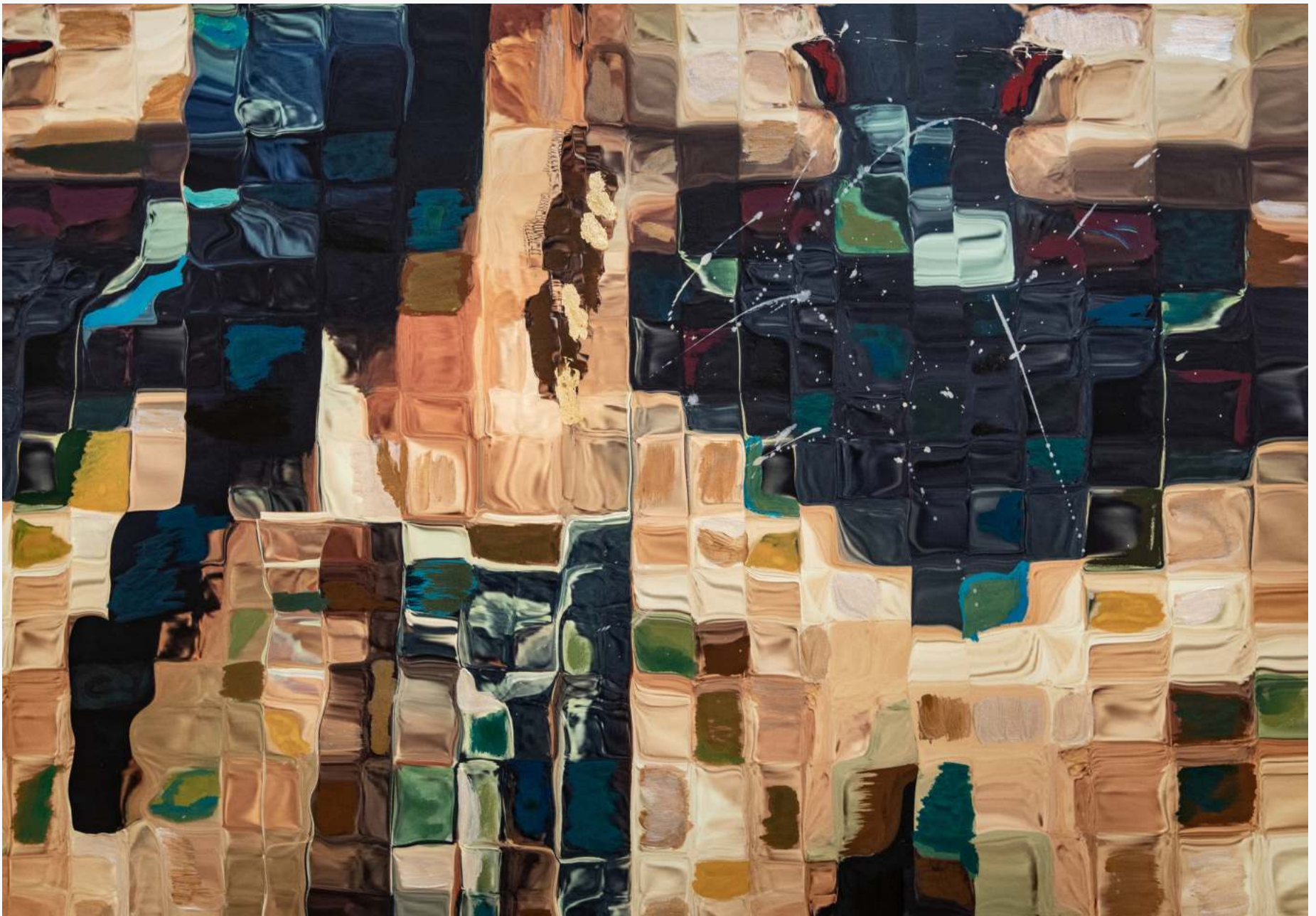
Inspired by Tretchikoff, this artwork started as a photograph taken of scattered cushions on a sofa. Tretchikoff's colour pallet was altered, and ink was added by hand to amplify the "pixel" shapes. The "Green Lady's" secret admirer is present in the background.

ADMIRER | MARTIN OSNER

Ltd Ed (20) | 76cm x 60cm | R 14900







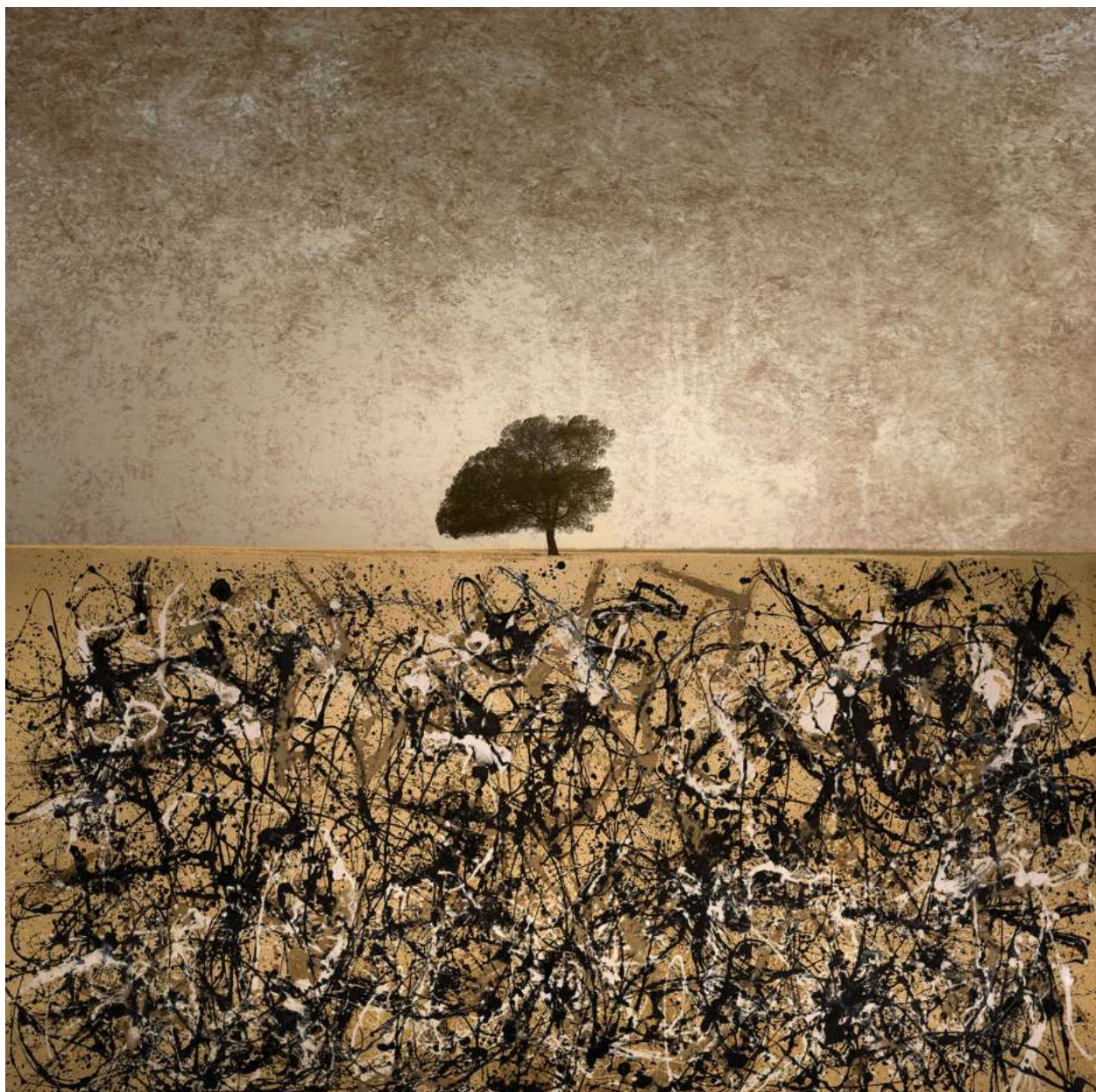
The defining moment – love at first sight portrayed in a cubist inspired, hand embellished fine art print with gold leaf inserts

COUPE-DE-GRACE | MARTIN OSNER
Ltd Ed (20) | 76cm x 60cm | R 14900



MEADOW OF GOLD | MARTIN OSNER

Landscape embellished with gold leaf. Ltd Ed (15) | 100cm x 77cm | R 19000



ARCANE NO.2 | MARTIN OSNER

Ltd Ed (50) | 100cm x 100cm | R17 900

A mixed media artwork (2019) of a solitary tree portrayed in an abstract world, inspired by the brilliant artist Jackson Pollock.



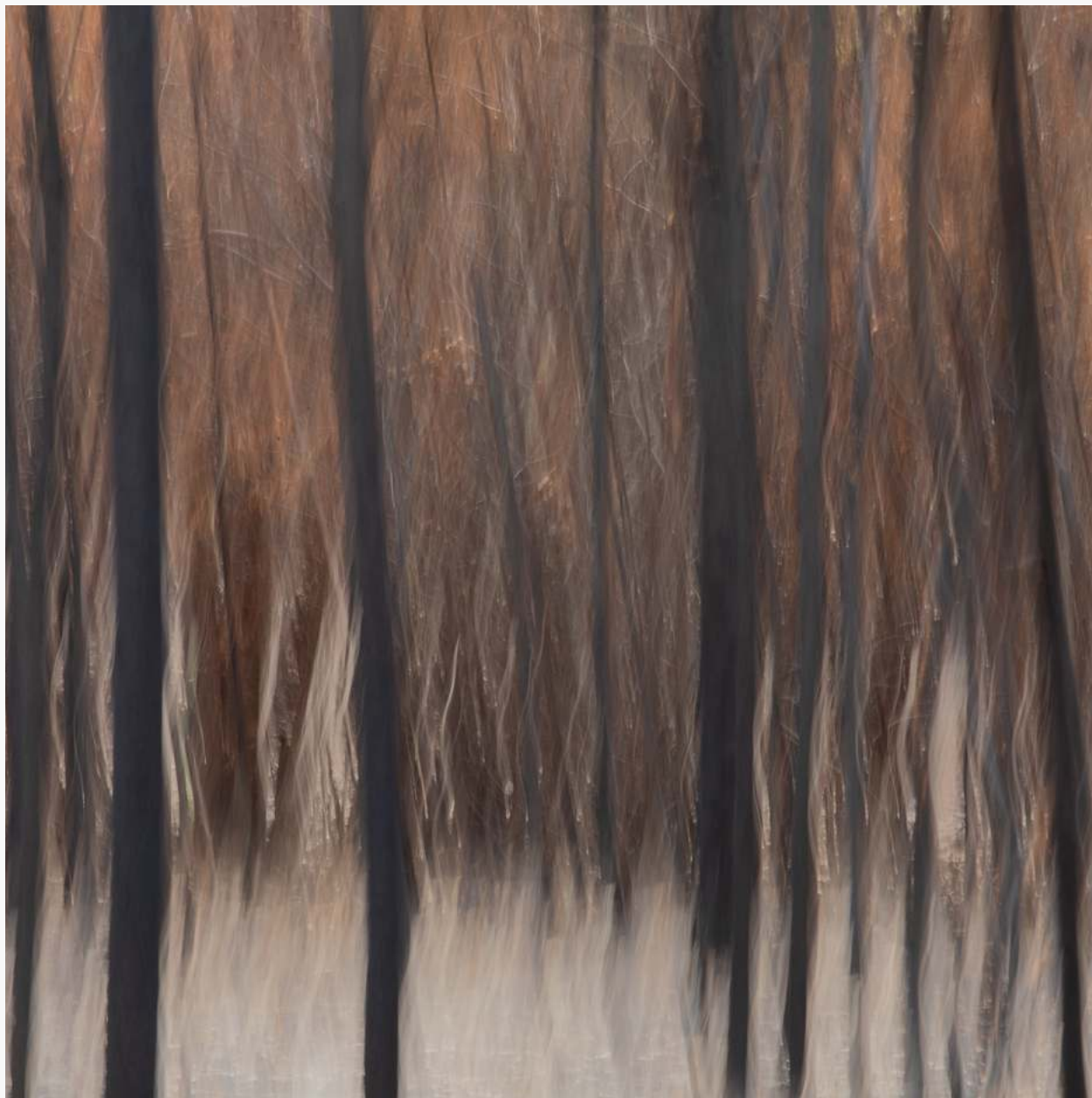


Abstract impressionism created using multiple exposures in camera.

AURA NO.3 | MARTIN OSNER

Ltd Ed (15) | 141cm x 110cm | R 26000





A burned forest and ash photographed using in camera movement to deliver an abstract impression.

FIRE & ASH | MARTIN OSNER

50cm x 50cm | R 4900



Martin & Samantha Lee Osner consider photography as a reality-driven medium that unlocks doors into the depths of art. They consider the camera as an instrument within a broader creative process.

In their work, they strive to convey emotion and design rather than illustration. Light is the magical, undisputed ingredient to them with its power to transform a subject in a split second.

As a father and daughter, they are blessed and privileged to share a creative world.

The Osner Gallery is a sanctuary, a dedicated place where they can display their passion on a wall and share their love for art and photography with others.



14 Luisa Way, Hout Bay, Cape Town, South Africa
Mobile +27 (0) 834721717 | Email osnerprivatecollection@gmail.com
<https://www.martinosner.com/osner-private-gallery-cape-town>