



REVERIE

EXPRESSIONS OF LIGHT



REVERIE

EXPRESSIONS OF LIGHT

29 November - 10 January '26

Osner Gallery - Hout Bay | Cape Town.

Reverie brings together new paintings, mixed-media works, and fine art photography by Martin and Samantha Lee Osner, a father-and-daughter exploration of memory, place, and atmosphere.

This exhibition reflects on how we hold moments in our minds: softened by time, abstracted through feeling, transformed by the particular quality of light that lingers long after a scene has passed. Through layered techniques and textured surfaces, through quiet imagery that resists easy explanation, the work invites you to slow down. To reconnect with stillness. To find that space where reality blurs into imagination.

Presented in the intimate setting of the Osner Gallery, Reverie offers something both gentle and compelling, a chance to see differently, to remember more deeply, and to discover what creativity and nostalgia can reveal when they work together.

INATHI

African Queen Collection

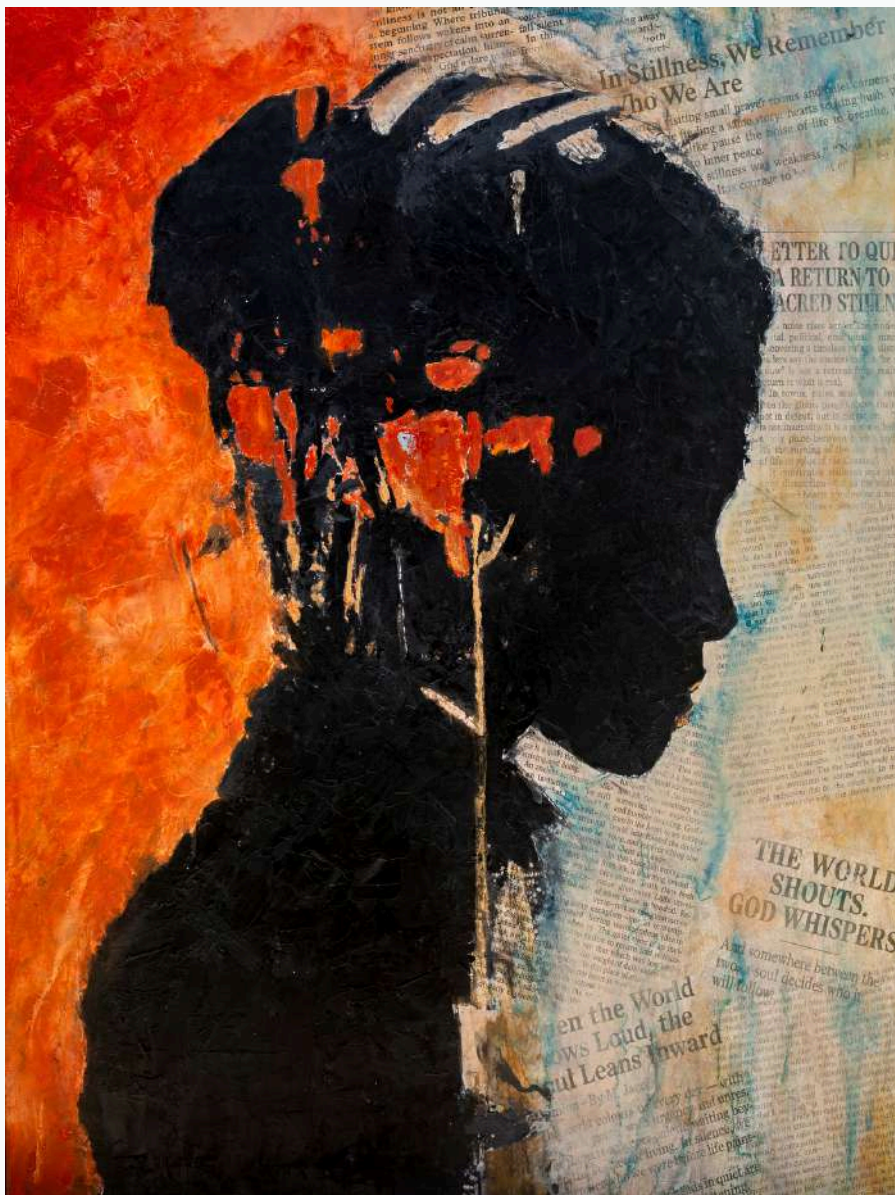


SOLD

Martin Osner | Painting on Metal | 85 x 106cm | Original Artwork

Inathi is the firstborn of the Sisters of Eight — calm, dignified, and carrying the quiet authority of one who holds the memory of her lineage. Her indigo and ochre cloth reflects the heritage she guards, while her steady gaze reveals wisdom shaped over time. As the eldest, Inathi stands as the anchor of the family: the keeper of tradition, the protector of their stories, and the guiding presence for the sisters who follow.

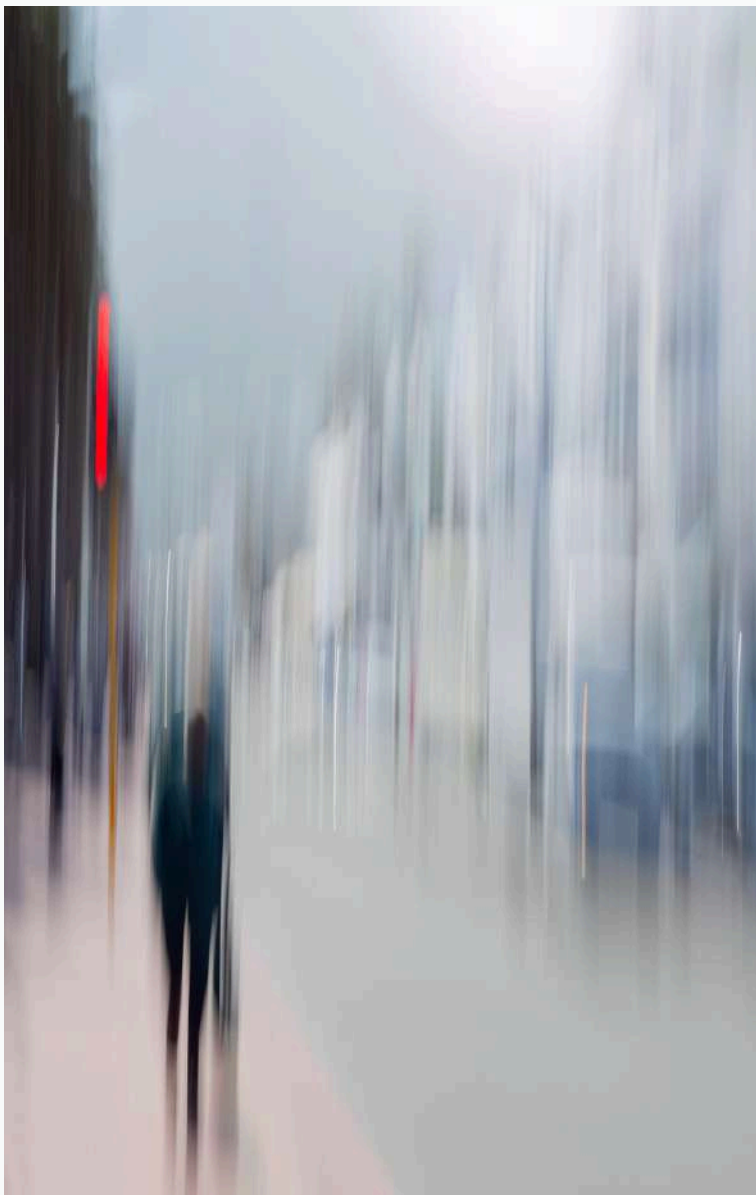




Martin Osner | Ink & Paint on Metal | 93 x 123cm | Original Artwork

BE STILL

Be Still reflects the quiet shift from the world's noise to an inner place of calm. The dark silhouette stands between turbulent colour and soft, muted tones, symbolising the moment one turns inward. Layers of textured paint and newspaper fragments, including the phrase "The world shouts, God whispers," echo the call to pause and listen. This piece invites the viewer into stillness — a gentle reminder that clarity is often found in the quiet.



Martin Osner | Giclée print on fine art paper | 80 x 120cm | Edition [15]

FRAGMENTED REFLECTIONS

Fragmented Reflections captures the fleeting rhythm of urban life through soft motion blur and diffused light. Figures and buildings dissolve into streaks of movement, while the red signal offers a single point of pause. The artwork reflects how city moments are often felt—impressionistic, fleeting, and held only in fragments.



BOULEVARD REVERIE

Boulevard Reverie is a misty, nostalgic cityscape inspired by a painting that once hung in the artist's grandmother's home. Soft brushwork and drifting figures create a dreamlike scene where memory and imagination blend, inviting viewers into a gentle moment of reflection.

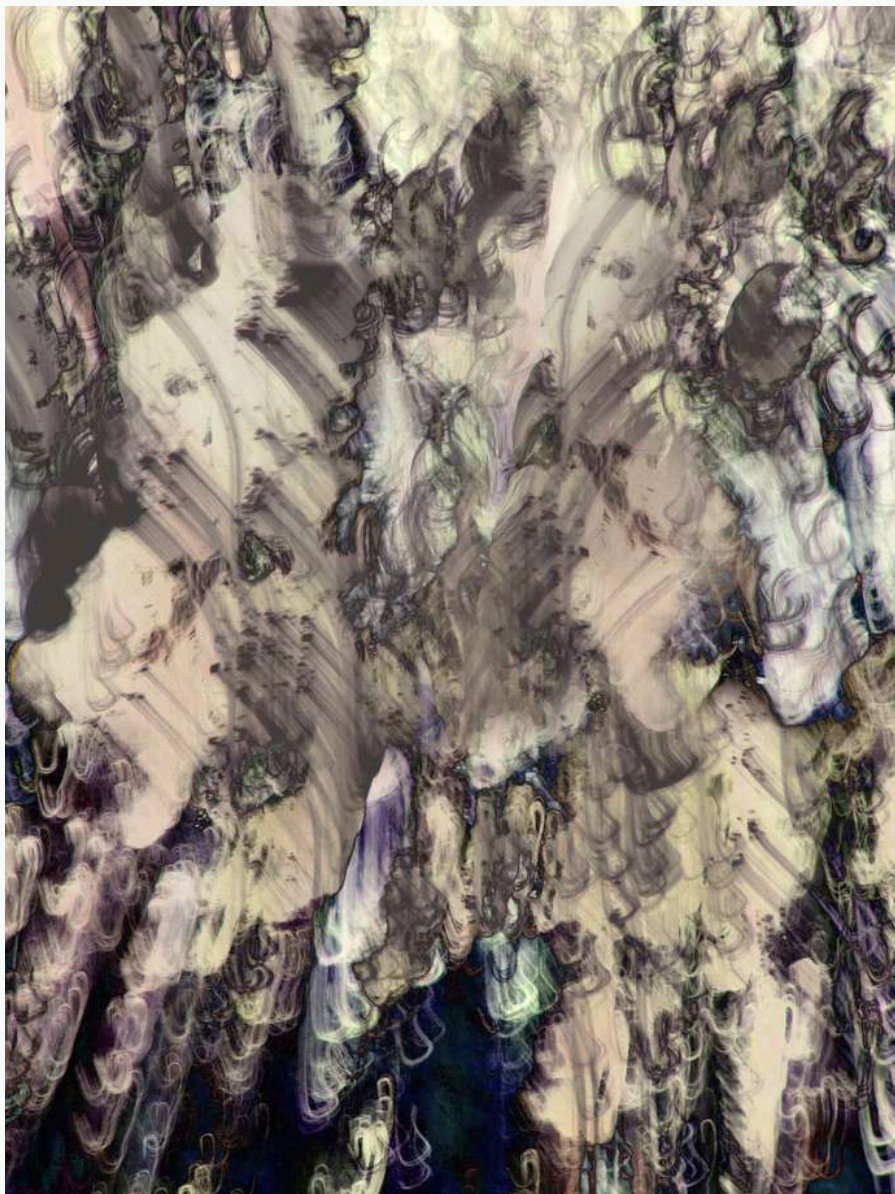
Samantha Lee Osner | Ink, oil and acrylic on canvas | 77 x 95cm | Edition [3]

EMBERS IN BLOOM



Samantha Lee Osner | Print on Fine Art Paper | 73 x 73cm | Edition [15] | #2/15 **Sold**

Embers in Bloom portrays a delicate stand of trees softened by layers of texture and warm, ember-like tones. Scattered flecks of red and gold drift through the scene like glowing sparks, giving the forest an ethereal, almost smoldering atmosphere. Gentle detail and soft gradients create a sense of quiet transformation, as if the landscape is suspended between autumn's fade and the first flicker of renewal.

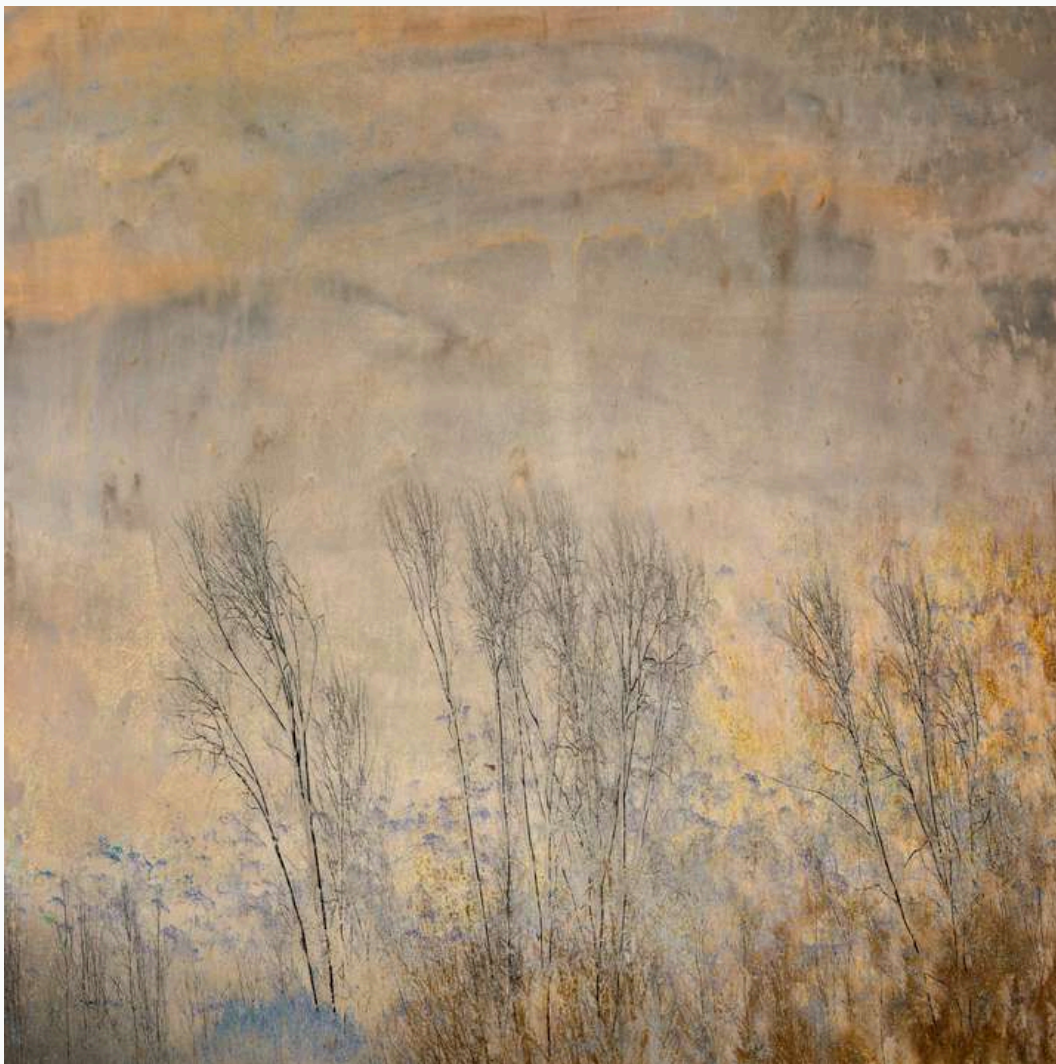


Martin Osner | Print on fine art paper | 63 x 72cm | Edition [15]

INNER FERVOUR NO.1

Inspired by the expressive energy of Jackson Pollock, this abstract impression captures the movement of a tree canopy blowing in the wind. The blurred forms and swirling textures create a sense of motion and spontaneity, transforming a simple moment in nature into a vibrant, painterly composition.

PASTEL IMPRESSIONS NO.1



Samantha Lee Osner | Print on fine art paper | 110 x 110cm | Edition [20]

This mixed-media landscape combines photography, paint, and textured overlays to create a quiet, atmospheric scene. Delicate tree silhouettes rise through soft, twilight tones, while layered textures introduce depth and a gentle sense of movement. Inspired by a midnight mood, the piece feels calm, refined, and quietly luminous.





Samantha Lee Osner | Print on fine art paper | 84 x 108cm | Edition [15] | AP-1 **Sold**

SYMPHONY

"Symphony" by Samantha Lee Osner is a mesmerizing mixed-media artwork. This ethereal masterpiece, crafted through multiple in-camera exposures, is brought to life with acrylic paint and touches of gold leaf. Experience a captivating symphony of light, colour, and imagination.



Martin Osner | Paint on Metal | 82 x 80cm | Original Artwork

EDEN

This textured tree draws on the story of Eden and the moment of choosing the knowledge of good and evil. The golden canopy stands between a cooler green on the left and a lighter glow on the right — both equally inviting, offering no clear direction. Through layered earth tones and subtle shifts in colour, the piece reflects the tension of discernment, where beauty lies on both sides yet the weight of the choice remains unseen.



Samantha Lee Osner | Print on Fabriano Paper | 68 x 68cm | Edition [7]

MIDNIGHT MEADOW

Midnight Meadow is a soft, dreamlike study of grasses against deep night tones, inspired by the delicate aesthetics of cyanotype. Gentle overlays and muted textures create a sense of quiet movement, evoking a meadow drifting between darkness and light.



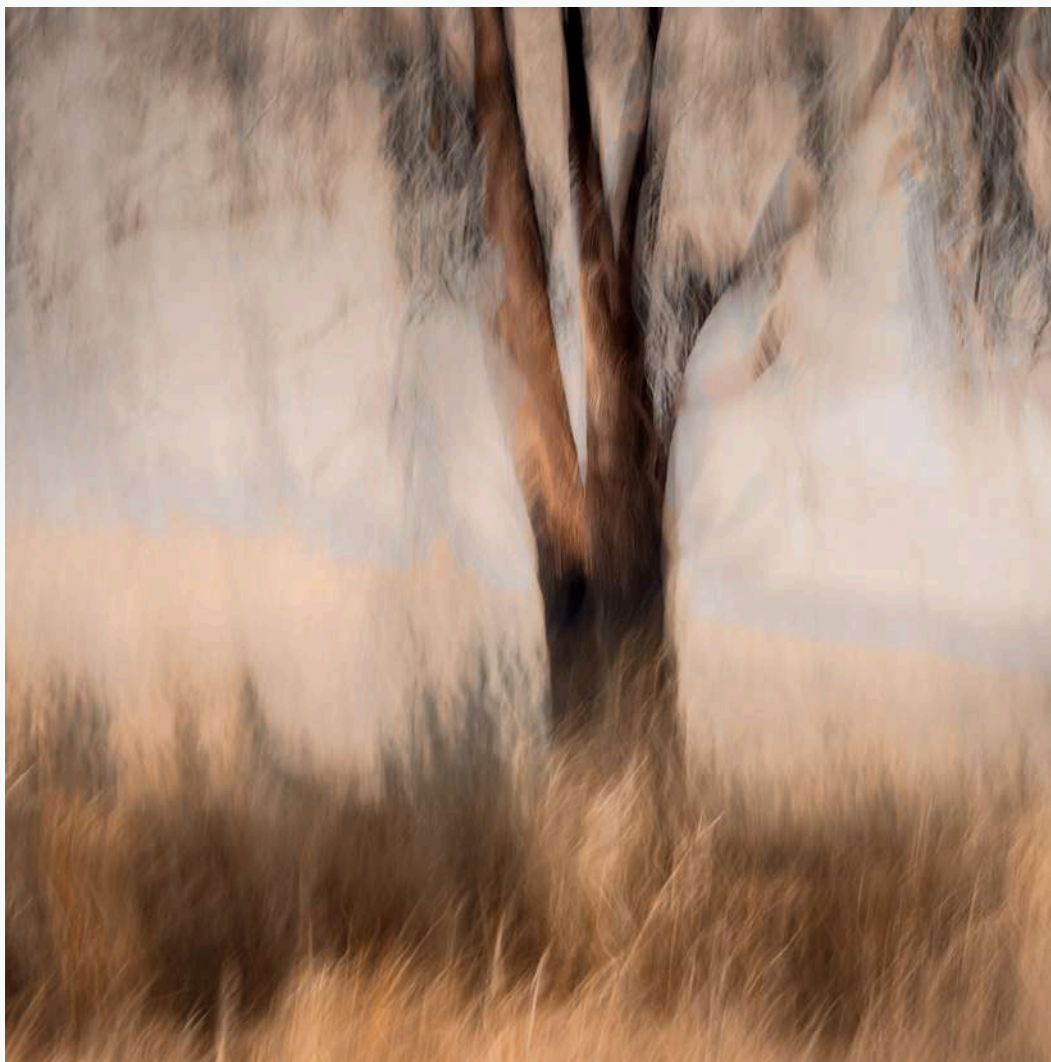


WHISPERS OF NATURE NO.1

The smooth integration of photography, paint, and metallic leafing results in a harmonious layering. "Whispers of Nature" exhibits a visually stunning and multidimensional quality, where painted textures entwine with delicate gold leaf accents. The soft pastel color palette employed in this edition of seven individually painted pieces evokes a sense of tranquility and gentleness within this captivating yet simplistic composition.

Samantha Lee Osner | Ink, paint and gold leaf on fine art paper | 80 x 110cm | Edition [7] | #5/7 **Sold**





Samantha Lee Osner | Giclée print on fine art paper | 80 x 80cm | Edition [15]

AMBER #1

Amber is a warm, impressionistic study of a lone tree surrounded by softly shifting grasses. Gentle motion blur and golden tones create a dreamlike sense of movement, as if the scene is glowing from within. The artwork evokes the quiet warmth of late light and the fluid dance between landscape, colour, and memory.



Martin Osner | Ink & Paint on Metal | 91 x 123cm | Original Artwork

ROOTED IN SILENCE

Rooted in Silence reflects the stillness of the COVID lockdown, when people were kept indoors and suddenly realised how deeply they longed for nature. The solitary tree symbolises what remained untouched outside, waiting quietly while humanity stayed away. The red block acts as a warning — a reminder of restrictions, boundaries, and how easily access to the natural world can be taken from us. The work calls us to value nature before it is withheld again.



WHISPERS OF NATURE NO.2

This mixed-media artwork layers soft washes, textured overlays, and hand-finished detail to create a calm, dreamlike study of a solitary tree. Gentle tones and subtle reflections add depth and quiet luminosity. Limited to an edition of seven, each piece holds its own character while remaining true to the collection's tranquil, ethereal style.

Samantha Lee Osner | Ink, paint and gold leaf on fine art paper | 80 x 120cm | Edition [7] | #1/7 **Sold**





Samantha Lee Osner | Paint on Canvas | 80 x 80cm | Original Artwork

JOVIAN

Jovian is a fluid abstract artwork inspired by the swirling atmospheres of distant planets. Gold, earth tones, and soft blues merge in molten, flowing layers, while metallic highlights evoke the energy of a celestial storm. The piece balances cosmic movement with raw, organic texture, inviting viewers into a world where planetary and earthly elements meet.



Martin Osner | Painting on Metal | 150 x 120cm | Original Artwork

MIDNIGHT MELANCHOLY

In the hush of a breezeless eve, the ocean unveils hues in the sun's parting embrace. A moody sky, a farewell canvas aglow with warmth, paints the last fleeting moments. The tide whispers into a lagoon, a sanctuary of tales untold. Ocean and sky, silent witnesses to time's eternal dance. This painting breathes serenity and introspection, where day and night unite in quiet communion, wrapped in the midnight's expectant embrace.



Martin Osner | Acrylic & Ink on Canvas | 102 x 82cm | Original Artwork

TIMELESS AFRICA

African Queen Collection

Two tribal women walk along a sunlit path, carrying large baskets filled with the fresh harvest balanced on their heads. Their steps are steady and purposeful, their voices low as they talk and laugh together, embodying a quiet transcendence that reflects their deep connection to the land and the rhythm of life.

SOLD





Martin Osner | Giclée print on Fine Art Paper | 142 x 113cm | Edition [7]

DAYBREAK OVER THE GLEN

Daybreak over the Glen is an abstract impression achieved through brushed camera movement, natural lighting, and texture overlays. This approach captures the mood and movement of dawn, reflecting an early-morning atmosphere. It combines subtle tonal shifts and layered elements to portray a sense of nature's quiet awakening.



Samantha Lee Osner | Paint on Metal | 57 x 57cm | Original Artwork

RESURGE

This textured abstract artwork blends warm gold and cool grey, suggesting light breaking through a weathered surface. Sculpted layers rise through the centre like geological forms, creating a quiet sense of movement and renewal. Subtle tonal shifts add depth and calm, inviting open interpretation.



Samantha Lee Osner | Paint on metal | 58 x 78cm | Original Artwork

MYSTIC

Mystic is an abstract artwork built on warm tones and subtle gold accents. Textured layers create a quiet sense of depth, while the gold adds a refined highlight that shifts with the light. The piece focuses on atmosphere rather than subject, offering a calm, understated presence.

ANALOGOUS ANTHOLOGY NO.10



Martin Osner | Ink & Paint on Metal | 75 x 75cm | Original Artwork

Analogous Anthology unfolds as nine quiet variations of tone and texture, each panel holding its own subtle atmosphere. Together they form a gentle study of harmony and transition — an abstract landscape built from shifting colour, softened detail, and layered nuance.

RETROSPECTIVE

SELECTION

The ground floor gallery features a curated retrospective of popular works from past exhibitions, bringing together pieces that have resonated most deeply with collectors over the years. This collection offers a quiet journey through earlier series and signature artworks, allowing patrons to revisit favourites that have shaped the evolving creative narrative of Martin and Samantha Lee Osner. Presented alongside the new body of work, these highlights provide context, continuity, and a sense of appreciation for the artistic paths that led to Reverie.

Click on thumbnail for more information





As the daughter of a fine art photographer, Samantha grew up surrounded by; cameras, lenses, studios and darkrooms, so it seems her fate was a fait accompli.

To her, photography is about capturing the beauty of a moment that lasts forever, a moment in time that can never be repeated.

She is fortunate to have found her passion at an early age under the guidance and mentorship of her father, fine art photographer and artist Martin Osner.

After studying at his photography school for several years, she started experimenting with art photography and was offered her first exhibition in 2016.

Lights, camera, action and her career as an art photographer had begun. Samantha's stunning portfolio includes landscapes, portraits and mixed media prints in both limited and open editions; she is an artist who portrays minimalism, femininity, and elegance throughout her work.



SAMANTHA LEE OSNER

"SIMPLICITY IS THE ULTIMATE SOPHISTICATION."
— LEONARDO DA VINCI



My artistic journey has been a dynamic blend of traditional painting and fine art photography, evolving from limited editions to unique, original artworks. Photography entered my life unexpectedly in 1984, altering my path and becoming a medium that allowed me to embrace creativity while addressing my parents' concerns about the challenges of an art career. It became the foundation for an extraordinary

adventure, blending artistry with storytelling. Over the years, my approach has been shaped by simplicity, honesty, and self-discovery. Everyday life is my muse, and I see all subjects as potential compositions. While I view the world through a painter's eyes, my camera and lens are my tools, allowing me to transform light and composition into expressive works. My process is guided by emotion and experimentation, free from constraints, and often blending

photography with mixed media to create art that evolves organically. Today, I feel I have come full circle, equally at home behind the lens or holding a palette knife. I believe my path has been guided by a caring Creator, and my passion for art and photography is something I could never relinquish. It's not just what I do—it's who I am.



MARTIN OSNER

*"ART AND PHOTOGRAPHY ARE NOT JUST WHAT I
DO—THEY'RE WHO I AM."*



BLOUPUNT WINES

A FUSION OF FINE WINE AND CREATIVE VISION

Bloupunt Wines is a boutique Montagu winery where expressive art and thoughtful winemaking come together. Revived under winemaker Nicky Cowper, Bloupunt crafts each wine as a true reflection of land and season — from the gentle minerality of the unoaked Chardonnay to the delicate Rosé, the bold, berry-layered Shiraz, and the structured Cabernet Sauvignon shaped by blackcurrant and plum. Every bottle honours the terroir, the harvest, and the passage of time.

To complete the story, each wine is wrapped in an original artwork created by Martin and Samantha Lee Osner. These visual narratives echo the mood and essence of the wine, transforming each bottle into a multi-sensory experience that begins with the label and continues through the final sip. Explore the current release to discover a collection crafted with integrity, creativity, and a deep sense of place.



Bloupunt Winery, 12 Long Street, Montagu | +27 (0)72 267 8740 | info@bluvines.co.za



14 Luisa Way, Hout Bay, Cape Town.

Landline +27 (0) 21 7906494 | Mobile +27 (0) 834721717 | info@osnergallery.com | www.osnergallery.com