



**Harsha**  
**Speciality Welding**



**High Quality  
Speciality  
Welding  
Workshop**





## About the company

- ▶ Established in 1998, Harsha Speciality Welding provides end to end solutions in the repair and maintenance industry.
- ▶ Primarily dedicated in repairing and maintaining heavy projects like Hydel Plants, Thermal Plants, Cement Plants, Steel mills and a host of other industries.
- ▶ Done all kinds of job work pertaining to weld repair, coating for M/s Larsen and Toubro Ltd. since inception.
- ▶ Believes that quality begins with customer expectations and ends with the customer satisfaction, and that quality is measured by our customer's success. This philosophy continually focuses its efforts to creatively meet the needs of its customers.
- ▶ It's success rests squarely on the competency, creativity, teamwork, diversity, initiative, and integrity of its employees and it values these qualities most highly.

## Vision

Harsha Speciality Welding aims to become a specialized manufacturing, weld repair and maintenance shop in the region, by providing distinctive technical & innovative solutions for its customers

## Mission

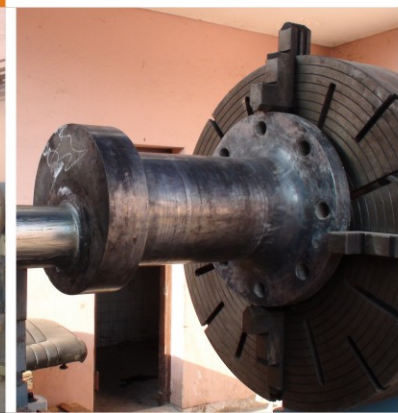
Harsha Speciality Welding will develop better technologies for specialised products for import, substitution like carausol rolls etc. for steel rolling mills

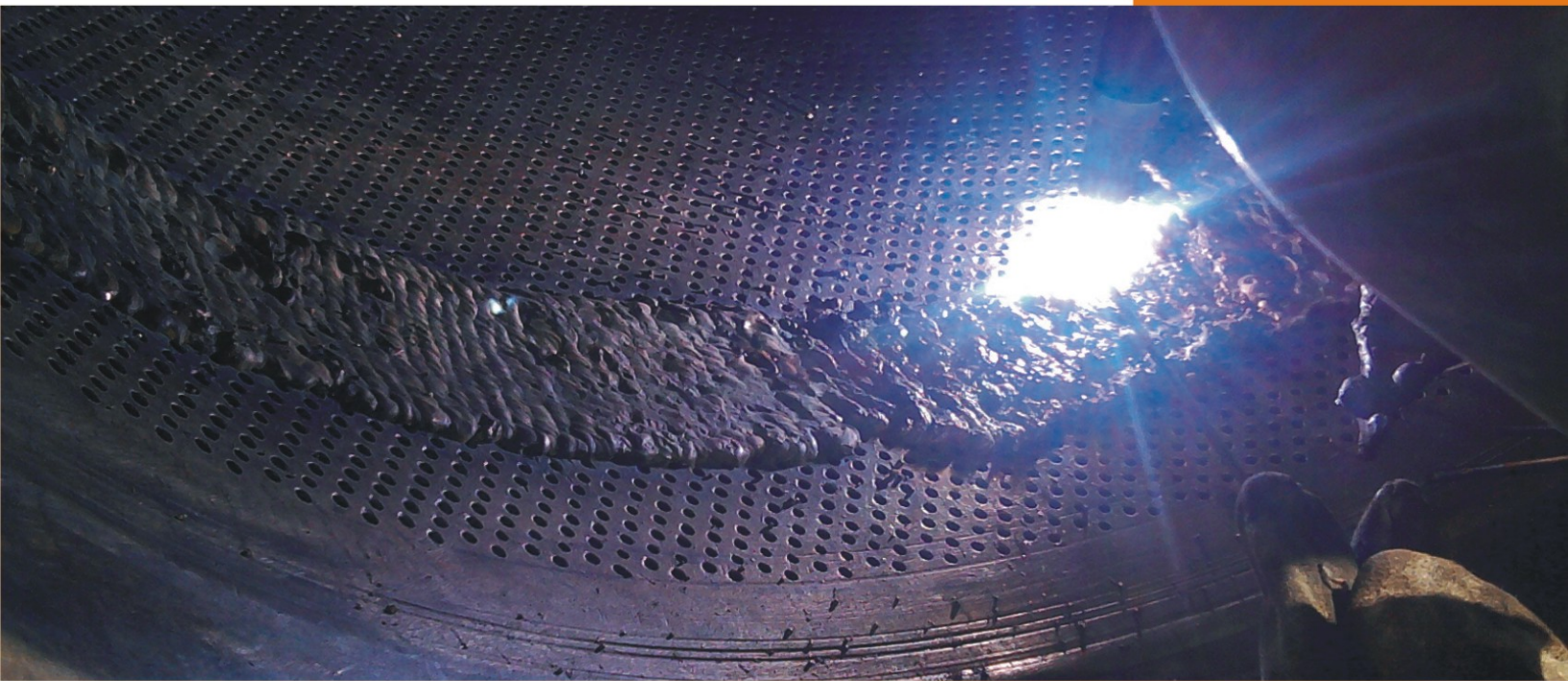


## Services Offered

### Processes:

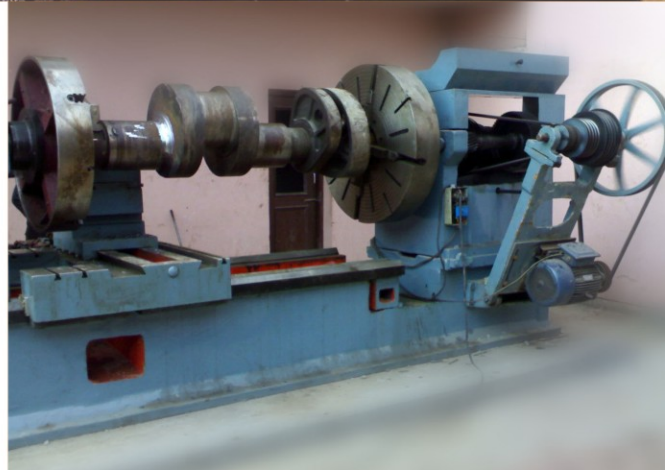
- ▶ Manual Metal Arc Welding (MMAW)
- ▶ Gas tungsten arc welding (GTAW)/Tungsten Inert Gas (TIG)
- ▶ Gas metal arc welding (GMAW)/ Metal Inert Gas (MIG) welding
- ▶ Submerged arc welding (SAW)
- ▶ Ceramic Coating
- ▶ High Velocity Oxygen Fuel Thermal Spray Process (HVOF)
- ▶ Spray & fuse coating
- ✓ **We undertake all kind of weld repair & machining jobs.**





## Applications:

- ▶ **Hydel Jobs:** Welding, machining and coating of guide vanes, pelton and francis runners, MIV seals, spears and liners, in-situ repair of underwater parts etc.
- ▶ **Cement Jobs:** Welding and machining of cranksheels, Gear Box shafts (Input pinion shaft cement Mill etc.), shafts for coal mill grinding roller, rotary air locks for coal mill bag filter, girth gears, heavy shafts bearing areas of heavy rotors, kiln tyre cracks, reconditioning of Impeller (VRM fans), Cement Mill Inlet head cracks etc.
- ▶ **Engineering Jobs:** Welding and machining of breast Rolls, pick up rolls for paper industry, air rotary unit, Cylinder block of CO2 compressors, back up rolls, all types of forging dies and moulds, sugar rolls etc.
- ▶ **Forging Jobs:** Welding and machining of hammers etc.
- ▶ **Railway line jobs:** CMS built up and points and crossings
- ▶ **Thermal Power:** Welding and machining of Rotor assemblies of coal crushers, wheel assemblies etc.



## From the Director

I take great pleasure to greet the people in the industrial community for their prominent services for propelling India on the path of industrial self sufficiency at a rapid pace. We at Harsha Speciality Welding try to make our contribution towards this great purpose by helping them maintain their production efficiency at maximum levels by taking care of their maintenance needs with respect to weld repair or surface coating of critical machine parts.

My best wishes for all such people and I hope they will take advantage of such technical innovation to help them achieve their goals!



Our esteemed associate:  
Larsen & Toubro Ltd. Eutectic Division



**Harsha Speciality Welding**

Plot No.269, Industrial Area Phase II, Panchkula 134113, Haryana (INDIA)

Phone : +91 172 2593269, +91 98880 81005

vikram.malhotra@harshawelding.com [www.harshawelding.com](http://www.harshawelding.com)