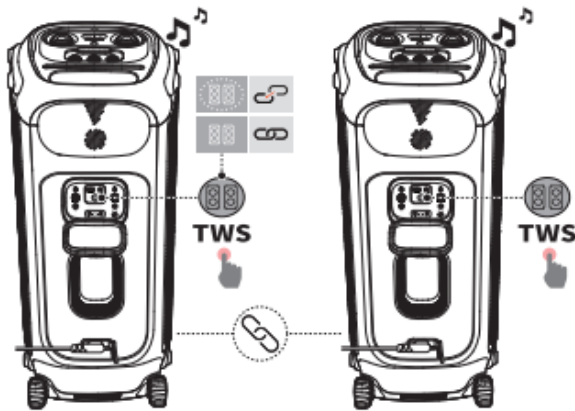


Speaker Connection Instructions:



Press **TWS** on both speakers.

To exit TWS mode:

Power off or press **TWS** on either speaker.

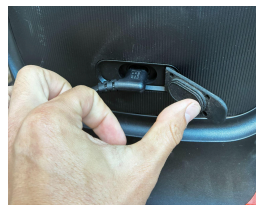
(if *TWS connection* doesn't work, use aux cord in toolbox to manually connect both speakers to each other)

Speaker Plug in Instructions:

1. Flip open tab at bottom of speaker



2. Plug in JBL extension cord



3. Plug into wall outlet



Microphone Connection Instructions:

1. Flip open tab



2. Plug in Adapter



3. Turn on Adapter



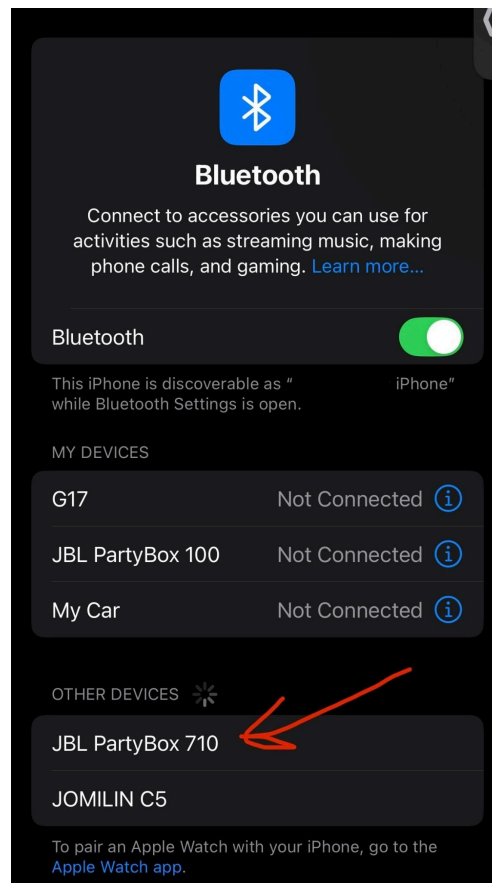
4. Turn on Microphone



Bluetooth Connection Instructions:



1. Press Bluetooth Button



2. Click "JBL PartyBox 710"