

## OLEC series of mud pumps

The series mud pumps supplied by OLEC ETS are designed according to the original brand parameters and performance, and are improved with the advantages of the international manufacturers to improve performance. The brand and power model are optional, each part can be interchangeable with the original design, can be upgraded to a variety of 1600HP pump pressure from 5000PSI to 7500PSI, we can provide different pump groups according to the requirements of the drilling.



Main performance characteristics of OLEC series mud pump:

The gear is a high strength alloy steel forging material, and the overall herringbone gear drive, high torque and stable operation.

The frame is subjected to overall heat treatment to eliminate stress, no deformation, and smooth installation and operation.

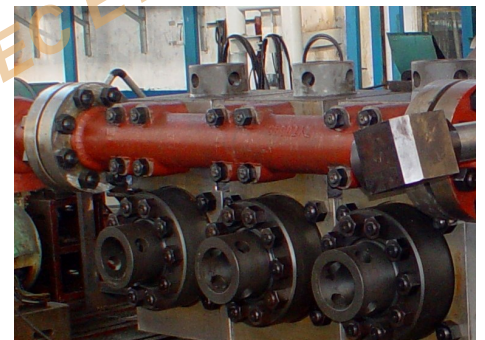
Set up the necessary oil tank and oil system, forced lubrication and gravity, splash lubrication combination, strong insurance, lubrication and cooling effect is good.

The vulnerable parts meet the API standard, and can be used according to the working conditions.

It is suitable for high temperature resistance resistance and low temperature resistance.

### Optional component type reference depending on user requirements different:

Performance and characteristics	Shaft	Gear	Bearing	Crosshead and Guide plate	Air bag	Discharge manifold	Seal
High quality– high performance price ratio	Forging welding structure	Narrow run-out groove	Made in America	Nickel bronze or Babbitt metal	Shell forged steel	forged steel	High and low temperature resistant-HNBR or polyurethane
Conventional– economical and practical	casting	Wide run-out groove	Other alternative	Cast iron	Shell cast steel	cast steel	Conventional condition-NBR



OLEC Engineering technology services

olecets.com

sales@olecets.com

+33 786843374



## OLEC-SERIES MUD PUMP

Type	Max. Input	Max. Pressure	Max. Liner Dia. & Stroke	Profile dimension L*W*H mm	Weight Kg
LCF-500	500HP	5000PSI	6-3/4"*7-1/2"	3658*2702*2207	9770
LCF-800	800HP	5000PSI	6-3/4"*9"	3962*2058*1694	14000
LCF-1000	1000HP	5000PSI	6-3/4"*10"	4120*2260*1778	18790
LCF-1300	1300HP	5000PSI	7"*12"	4426*3096*2004	24572
LCF-1600	1600HP	5000PSI	7-1/4"*12"	4615*3276*2688	24791
LCF-1600L	1600HP	5000PSI	7-1/4"*12"	4615*3276*2688	25000
LCF-2200	2200HP	7500PSI	9"*14"	5740*2505*2405	42550
LCF-1600HL	1600HP	7500PSI	7-1/4"*12"	4615*3276*2688	25200
LC-TEE	300HP	5000PSI	4"*5"	1819*1270*900	1451
LC-PAH	350HP	5000PSI	5"*8"	2692*1732*1263	4450
LC-PZ7	550HP	5000PSI	7"*7"	2997*2073*1269	7620
LC-PZ8	750HP	5000PSI	7"*8"	4877*2210*1372	8850
LC-PZ9	1000HP	5000PSI	7"*9"	3419*2431*1497	12890
LC-PZ10	1350HP	5000PSI	7"*10"	5652*2682*1730	16815
LC-PZ11	1600HP	5000PSI	7"*11"	4123*2642*1730	17327
LC-PZ11L	1600HP	5000PSI	7"*11"	4123*2642*1730	17600
LC-PZL HP	1600HP	7500PSI	7"*11"	5652*2936*1730	18975
LC8P-80	800HP	5000PSI	6-1/4"*8-1/2"	4150*2384*1524	12235
LC9P-100	1000HP	5000PSI	6-3/4"*9-1/4"	4477*2572*1626	15060
LC10P-130	1300HP	5000PSI	6-3/4"*10"	4740*2724*1702	19300
LC12P-160	1600HP	5000PSI	7-1/2"*12"	5309*2889*1905	24810
LC12P-160L	1600HP	5000PSI	7-1/2"*12"	5309*2889*1905	25000
LC14P-220	2200HP	7500PSI	9"*14"	5544*3194*2139	39007
LC12P-160HL	1600HP	7500PSI	7-1/2"*12"	5309*2889*1905	25300
LCW-440	400HP	5000PSI	4-1/2"*6"	2479*1219*1103	4463
LCW-446	446HP	5000PSI	6"*6"	2479*1219*1103	4513
LCW-447	440HP	5000PSI	6"*7"	2745*1366*1060	5933
LC3NB-500	500HP	5000PSI	6-1/4"*10"	4220*2640*2430	1594
LC3NB-1000C	1000HP	5000PSI	6-3/4"*9-1/4"	5170*2810*2530	2145
LC3NB-1300C	1300HP	5000PSI	6-3/4"*10"	5100*1940*1920	2300
LC3NB-1600	1600HP	5000PSI	7-1/2"*12"	4450*2850*2080	2970
LC3NB-1600HL	1600HP	7500PSI	7-1/2"*12"	4450*2850*2080	3200



OLEC Engineering technology services

olecets.com

sales@olecets.com

+33 786843374

