

Modules

OLEC offers premium fluid-end modules for all well-known mud pumps.

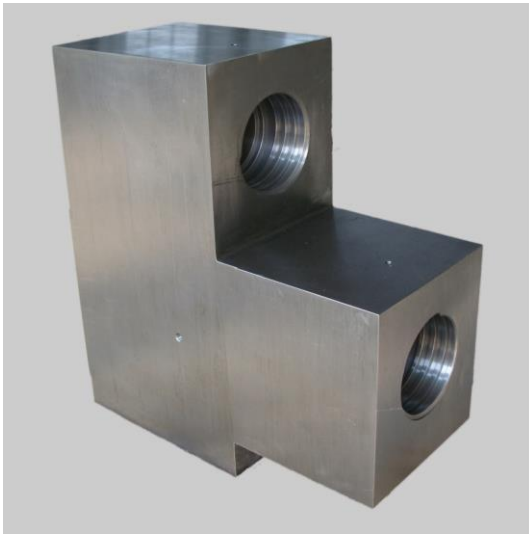
All modules are made from internally hardened AISI 8620 or 4135 alloy steels with precise machining, complex heat treatment, and strict inspection in order to provide extremely durable modules for high-demand pumping requirements in current oil and gas industry.

After the blank is forged and heat-treatment, damage or crack detection & static water pressure test will be carried so as to be sure to reach to the requirement of stipulated pressure.

Inner cavity of the module is machined by digital control lathe, which is guaranteed no different of the dimension in each section of the part.

The special processing technology Olec adopted -- Taper surface rolling & press Technology -- make its external taper connecting surface reach to 100%. There is no crevice for mud to go inside the cavity so as to extend its service life.

"L" Integrate or Suction Discharge Split Modules



Module Only



"L" Shaped Module w/Stud & Nut



Features

- OLEC's fluid-end modules are made by premium AISI 8620 AISI 8630 or 4135 alloy steels
- Operating pressure ranges are 5,000, 7,500, and 10,000 psi
- Valve-over-valve and L-shaped (one-bonded or two-pieces) modules are available
- OLEC's parts are fully interchangeable with standard OEM equipment
- Incomparable manufacturing technology and quality control assure durability
- Most of OLEC's parts are coated with our corrosion resistant material to maximize service time

Full End Module & Accessories



OLEC Engineering technology services

olecets.com

sales@olecets.com

+33 786843374



OLEC Fluid End Module Charts

Model	Module Only	Module w/Stud & Nut	Suction Module	Suction Module w/ Stud & Nut	Discharge Module	Discharge Module w/ Stud & Nut	"L" Suction Module	"L" Discharge Module	Complete Assembly
F-350/500/650	✓	✓							✓
F-800/1000	✓	✓							✓
F-1300/1600	✓	✓					✓ls	✓ls	✓
FB-1300/1600	✓	✓					✓	✓	✓
F-2200			✓	✓	✓	✓			✓
RSF-1600L			✓	✓	✓	✓			✓
PE-5	✓								
PAH	✓	✓							✓
TEE	✓	✓							✓
PZ-7/8/9 and W/wear plate	✓	✓					✓	✓	✓
PZ-10/11 and W/wear plate	✓	✓					✓	✓	✓
JWS185/340 JWS400	✓	✓							
7P-50			✓	✓	✓	✓			✓
8P-80			✓	✓	✓	✓			✓
9P-100			✓	✓	✓	✓			✓
10P-130			✓	✓	✓	✓			✓
12P-160			✓	✓	✓	✓	✓	✓	✓
14P-220			✓	✓	✓	✓			✓
T-500/800/1000	✓	✓							✓
T-1300/1600	✓	✓					✓	✓	✓
MM-1000	✓	✓							✓
A-850/1100/1400/1700-PT	✓	✓					✓	✓	✓
B-1100T/1300T	✓	✓							
3NB-500C	✓	✓							✓
3NB-800			✓						
3NB-1000C	✓	✓							✓
3NB-1300C/1600	✓	✓							✓
W-440	✓	✓							✓
W-446	✓	✓							✓
W-447	✓	✓							✓
EW-1300 (LE1300)	✓	✓							
WH-1300	✓	✓							✓
OPI-350			✓	✓	✓	✓			
OPI 700-HDL	✓	✓							
OPI-1000	✓	✓							
9T-1000			✓	✓	✓	✓			✓
12T-1600			✓	✓	✓	✓			
8T-650	✓	✓							✓
UNBT1180			✓	✓	✓	✓			✓
UNB600	✓								
SWF-1600HL (7500PSI)			✓	✓	✓	✓			✓
FC1600HL (7500PSI)			✓	✓	✓	✓			
BSF-1600HL (7500PSI)			✓	✓	✓	✓			✓
HHF-1600HL (7500PSI 7or8)			✓	✓	✓	✓			✓
RSF-1600HL (7500PSI)			✓	✓	✓	✓			✓
QSF-1600HL (7500PSI)			✓	✓	✓	✓			
SW12P-160HL (7500PSI)				✓	✓	✓			✓
PZ-11 (7500PSI)	✓	✓							✓

OLEC Engineering technology services



olecets.com

sales@olecets.com

+33 786843374

