



Mini Size : 118\*37\*50 mm

## TMM6PT

**1.77" LCD Screen**

The TMM6PT is a compact and rugged

Easy to operate

PoC Mobile radio that enables connected over 2G/3G/4G/ LTE and Wi-Fi for wide-area radio communications



# FEATURES



## Spanish / English / French / German / Voice Prompt

Many kinds of voice prompt available to facilitate radio operation for customers in different countries.



## Dual Micro SIM Card Slots



## 2W Audio Output Speaker



## Cell Phone Call

Clear communications are critical to user. TMM6PT used 2W Audio output Speaker to provide loud, clear communication at the crowd noise area.



## 4G / 3G / 2G Network Covered

Nationwide Coverage 2G / 3G / 4G Cellular Networks. Various cellular bands version available to meet with different country's SIM Card.



## WiFi connectivity

Built-in Wi-Fi supports in-building communications with seamless switching to 4G / 3G / 2G cellular networks when outside Wi-Fi range.



## GPS Position

GPS enables real-time tracking and positioning over the PC Dispatch Console.



## 1.77" LCD Screen

LCD display provides high-resolution visibility even under bright daylight. Supports an easy-to-use GUI menu system with clean and simple navigation



## Bluetooth 4.2

Built-in Bluetooth enables connectivity to earpieces, Push-to Talk mic, and other wireless accessories.



## Emergency Alarms and Calling (SOS)

Emergency Alarms can be sent to other radios via the one touch programmable button. Improves worker safety and emergency response time.



## RAM + ROM: 1 + 8GB

1+8G large memory storage



## General call / Private / Group





## Text messaging

Receive / View Message from PC Dispatch Console



## Total Screen, Screen projection Tool

Project device screen onto PC computer screen where you can use mouse and keyboard to control up to setting the radio device.



## Stun and revive (Depends on platform whether support this function or not)

Dispatcher can remotely stun (disable) or revive (return to service) if the radio is lost or stolen



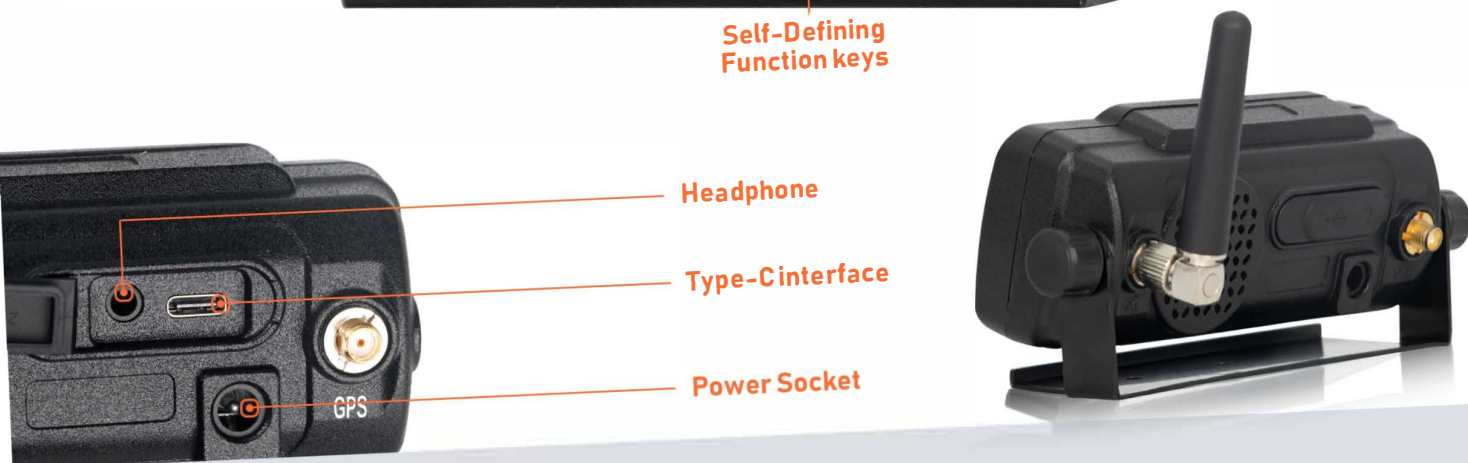
# TMM6PT

## Technical Specifications

|                                    |   |
|------------------------------------|---|
| <b>System</b>                      | Android 7.1   |
| <b>Network Version A</b>           | LTE FDD : B1 / B3 / B5 / B8<br>LTE TDD : B38 / B39 / B40 / B41<br>TD-SCDMA : B34 / B39<br>EVDO/CDMA : BC0<br>WCDMA : B1 / B8<br>GSM : 900 / 1800MHz |
| <b>Network Version B</b>           | LTE FDD : B1 / B3 / B5 / B7 / B8 / B20<br>LTE TDD : B38 / B40 / B41<br>WCDMA : B1 / B5 / B8<br>GSM : 850 / 900 / 1800 / 1900MHz                     |
| <b>Network Version C</b>           | LTE FDD : B2 / B4 / B5 / B7 / B12 / B13 / B25 / B26<br>WCDMA : B1 / B2 / B4 / B5 / B8<br>GSM : 850 / 1900MHz  |
| <b>Network Version D</b>           | LTE FDD : B1 / B3 / B5 / B7 / B8 / B28<br>LTE TDD : B40<br>WCDMA : B1 / B2 / B5 / B8<br>GSM : 850 / 900 / 1800 / 1900MHz                            |
| <b>Network Version E</b>           | LTE FDD : B1 / B2 / B3 / B5 / B7 / B8 / B20 / B28A<br>LTE TDD : B38 / B41<br>WCDMA : B1 / B2 / B5 / B8<br>GSM : 850 / 900 / 1800 / 1900MHz          |
| <b>WLAN</b>                        | A Network Version: 2.4G / 5G, 802.11 a/b/g/n<br>B / C / D / E Network Version: 2.4G / 5G, 802.11 a/b/g/n  |
| <b>Bluetooth</b>                   | BT2.1+EDR / 3.0 / 4.1 / 4.2LE   |
| <b>Positioning System</b>          | GPS / GLONASS / BeiDou  |
| <b>LTE</b>                         | LTE FDD: Max 150Mbps (DL) / Max 50Mbps (UL)<br>LTE TDD: Max 130Mbps (DL) / Max 35Mbps (UL)  |
| <b>UMTS</b>                        | DC-HSDPA: Max 42Mbps (DL)<br>HSUPA: Max 5.76Mbps (UL)<br>WCDMA: Max 384Kbps (DL/UL)   |
| <b>Ports</b>                       | Type-C / 3.5mm Audio Jack / Power Socket  |
| <b>Memory</b>                      | RAM: 1GB / ROM: 8GB   |
| <b>SIM Card Size</b>               | Micro SIM ( 12 x 15mm )   |
| <b>Earphone Port</b>               | Support External Speaker  |
| <b>Audio Power Output</b>          | 2W  |
| <b>Operating Voltage ( V )</b>     | 13.8V / 24V   |
| <b>Operating Temperature Range</b> | -20°C ~ +60°C   |
| <b>Dimensions ( L * W * H )</b>    | 118*37*50mm   |
| <b>Weight</b>                      | 185 G   |

All specifications are subject to change without notice due to continuous development

# Machine Button Definition



## Accessories

### Standard Accessories



Power Cable



GPS Antenna



4G Antenna



Microphone



Fixed Bracket

# Warranty

for our customers, and providing warranty of 12 months for radio body.

Please take pictures and videos of the products you bought and contact us or our partners to solve the problem.

## Target Applications

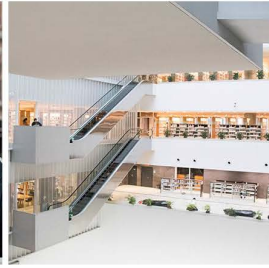
Nearly all business sectors can use PoC radios, it only requires the area covered 3G / 4G cellular network or WiFi Network. TMM6PT Series radios keep communication simple and quick, so you can focus on driving business results. The TMM6PT is designed for remote workers who require reliable group communications in the long distance. The fastest growing sector is service companies with small and medium-sized fleets:



Transportation and Logistics



Multi-site Work



Public Safety



Emergency Situation Command



Safety and Security



Festivals and Events



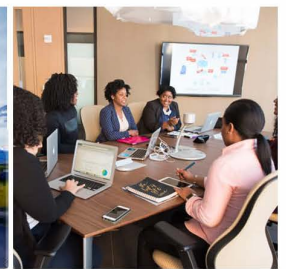
Private Ambulance



Property Management



Fleet Management



Business Service