

FreeScan UE Pro2

Wireless Multi-Functional Laser Handheld 3D Scanner

Inspect on the move



FreeScan UE Pro2

Inspect on the move

Based on the capabilities of FreeScan UE series, FreeScan UE Pro2 features an innovative integrated WIRELESS module for more flexibility and mobility. With its ultra-fast scan speed, efficiency is doubled, empowering quicker project completion.

The patented innovative built-in photogrammetry technology enhances volumetric accuracy, making it perfect for scanning a wide range of parts from small to large.

Additionally, the integrated inspection module facilitates on-site quality control, streamlining your workflow effortlessly with all-in-one shopfloor solution.

Ideal for inspections and versatile applications, FreeScan UE Pro2 sets a new standard in portable 3D metrology world.




Wi-Fi 6



Wireless and Portable

Integrated with Wireless module, FreeScan UE Pro2 liberates you from cables, allowing seamless data transmission during scanning.

Perfect for on-site fieldwork, shopfloor and harsh working environment, this 950g scanner empowers you to capture accurate 3D data effortlessly, wherever your projects happen.



Scan speed up to

3,460,000

points/sec

Double the Speed, Double the Productivity

FreeScan UE Pro2 offers nearly double scanning efficiency compared to the previous generation.

With a rapid scan speed up to 3,460,000 points/s, you can complete the scanning tasks smoothly, thus allowing you to focus on inspection applications to enhance your overall productivity.

Accelerates data capture and processing, reducing overall scanning time and computer workload, ensuring the wireless scanning mode to achieve same scanning frames as scanner connected with cable.

Ensures faster and more comprehensive scanning.

Achieves up to 180fps for smooth and rapid data acquisition.



Certified and Guaranteed Results

With the volumetric accuracy up to 0.02 mm + 0.015 mm/m using photogrammetry, FreeScan UE Pro2 delivers consistent and reliable global accuracy and scanning results.

SHINING 3D Accuracy Laboratory, accredited by CNAS in accordance with ISO 17025, ensures rigorous calibration of optical metrology. Based on VDI/VDE 2634 guidelines, the laboratory guarantees the traceability of measurement processes and calibration results. This certified metrology system is ISO compliant and can easily be integrated into your ISO quality control processes.





Elevated Accuracy for Large-Scale Scans

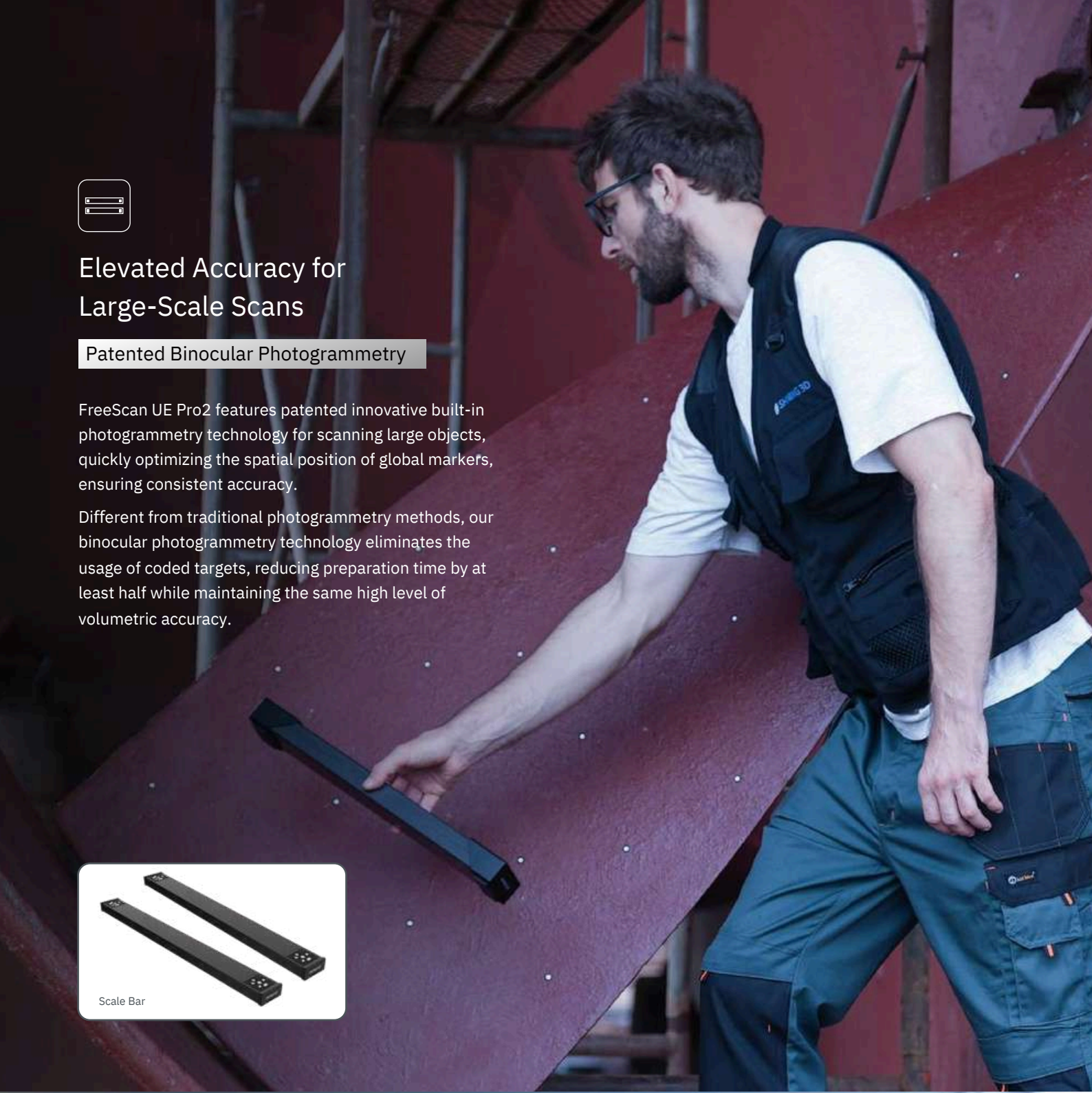
Patented Binocular Photogrammetry

FreeScan UE Pro2 features patented innovative built-in photogrammetry technology for scanning large objects, quickly optimizing the spatial position of global markers, ensuring consistent accuracy.

Different from traditional photogrammetry methods, our binocular photogrammetry technology eliminates the usage of coded targets, reducing preparation time by at least half while maintaining the same high level of volumetric accuracy.



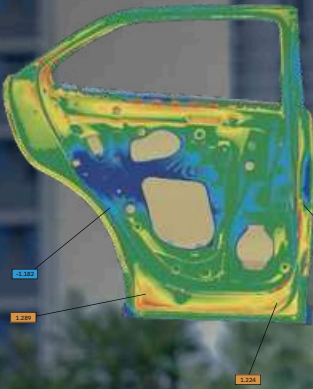
Scale Bar





Quick On-Site Inspection

Our integrated inspection module ensures rigorous quality control. Simplify operations and enhance fast quality check on-site for you.



SPECIFICATIONS

| | | | |
|------------------------|--|------------------------|------------------|
| Product model | FreeScan UE Pro2 | | |
| Scan mode | Multiple lines scan | Fine scan | Single line scan |
| Light source | 50 laser lines | 7 parallel laser lines | 1 laser line |
| Working distance | 300 mm | 200 mm | 300 mm |
| Scan accuracy | 0.02 mm | | |
| Volumetric accuracy | 0.02 + 0.03 mm/m (0.02 + 0.015 mm/m with photogrammetry) | | |
| Scan speed | Up to 3,460,000 points/s | | |
| Scan depth | 360 mm | | |
| Max. FOV | 600 x 550 mm | | |
| Point distance | 0.01 ~ 10 mm | | |
| Laser class | Class II (eye safe) | | |
| Connection standard | USB 3.0 | | |
| Dimension | 305.8 x 118.9 x 100.8 mm | | |
| Weight | 0.95 kg | | |
| Power input | 24V, 3.75A | | |
| Working temperature | -20 ~ 40°C | | |
| Working humidity | 10% ~ 90% | | |
| Certifications | CE, FCC, ROHS, WEEE, KC, FDA, UKCA, IP50, TELEC, TISAX | | |
| Accuracy Certification | VDI/VDE 2634 Part3 (certificated in ISO 17025 certificated accuracy lab) | | |

Recommended computer configuration

OS: Windows 11 Professional 22H2 (64-bit)
Processor: 13th Gen Intel® Core™ i7-13700H or above
Graphics Card: NVIDIA GeForce RTX 4060 Laptop GPU or above
Video Memory: 8G or above; RAM: 64G or above, DDR5 dual-channel; Interface USB 3.0

Notice: SHINING 3D reserves the right to modify or adjust the above specifications and pictures.

*Based on VDI/VDE 2634 part3. Sphere-spacing error is assessed with traceable length artefacts and markers by measuring these at different locations and orientations within the working volume, in the accuracy lab with environment conditions: temperature $20 \pm 0.5^{\circ}\text{C}$; humidity 40 ~ 60% RH.



ROBOPRENEUR SDN BHD No.4811-2-43, CBD
Perdana, 2,
Jalan Perdana, Cyber 12, 63000 Cyberjaya,
Selangor



www.robopreneur.com



03-2726 2476



sales@robopreneur.com



LinkedIn



Youtube



Website