



EinScan HX2

Hybrid Blue Laser & LED Light Source
Handheld 3D Scanner



EinScan HX2

The EinScan HX2 enhances its predecessor's features, now boosting 13 crossed blue laser lines for more detailed scanning and an increased frame rate of 120 FPS for faster scanning. Retaining the hybrid laser and blue LED technology, the EinScan HX2 excels in accuracy, versatility, and ease of use. The EinScan HX2 is ideal for automotive aftermarket, mold manufacturing, research & education, art & culture.



HYBRID BLUE LASER & LED LIGHT



HIGH ACCURACY & DETAIL



HIGH EFFICIENCY



PORTABLE & EASY OPERATION



FULL COLOR



EXMODEL



Hybrid Blue Laser & LED Light

The EinScan HX2 continues the innovative integration of hybrid blue laser and LED light technology, enhancing material adaptability for a broader range of applications. The advanced blue laser captures complete data from black and reflective surfaces with exceptional surface and environmental adaptability, now with 13 laser lines for more fast and detailed scans. The efficient LED light scanning requires no markers, enabling rapid 3D scanning without preparation.





Automotive Door
1180 × 1300 mm

High Efficiency

The EinScan HX2's laser scan mode reaches 1,600,000 points/s and 120 FPS, enabling rapid scans for reverse engineering, CAD/CAM, and 3D printing. It scans most objects in minutes, ensuring superior efficiency and productivity in all your 3D scanning projects.

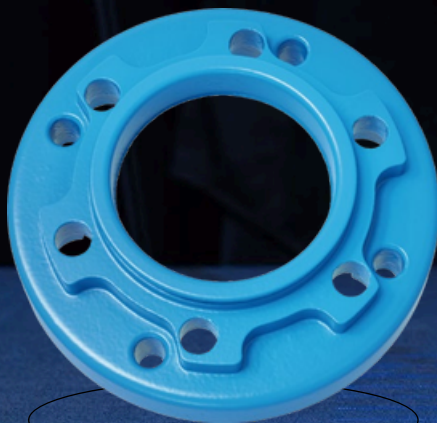
SHINING 3D



High Accuracy & Detail

The EinScan HX2 meets the rigorous demands of industrial applications for reverse engineering and precise measurement.

Minimum point distance of 0.05 mm
Accuracy up to 0.04 mm under laser mode



Ring Flange
Outer Ring Radius 52 mm
Inner Ring Radius 26 mm





Fire Hydrant
68 × 68 × 620 mm

Portable & Easy Operation

The EinScan HX2 excels in portability and ease of use with its ergonomic design and lightweight build at just 710g. Perfect for both beginners and professionals, its plug-and-play functionality and user-friendly software make 3D scanning efficient and comfortable, anywhere you go.

Full Color



With a built-in color camera, it supports full-color texture capturing and tracking in rapid scan mode. Texture Mapper Lite further simplifies photorealistic texture mapping.



→
Original



←
Scanned data by
EinScan HX2 &
Texture Mapper Lite



Multicolored Shoe
293 × 96 × 110 mm

EXModel

EXModel is a powerful bridge that simplifies CAD modeling from 3D scanning to manufacturing. With the integration of EXScan HX, you can now seamlessly import data to EXModel with a single click after completing a scan. EXModel offers a comprehensive set of tools that enable you to create professional-grade CAD digital models that are compatible with your CAD software.



Effortless Mesh Processing



Precision CAD Creation

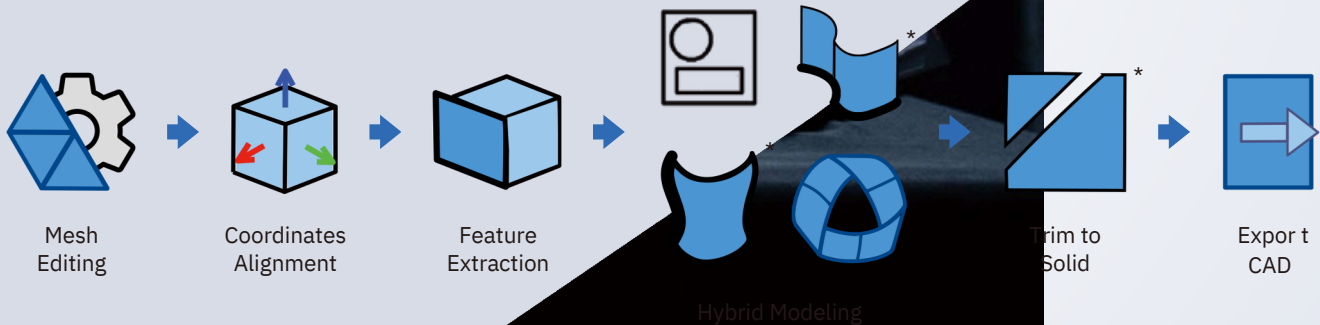
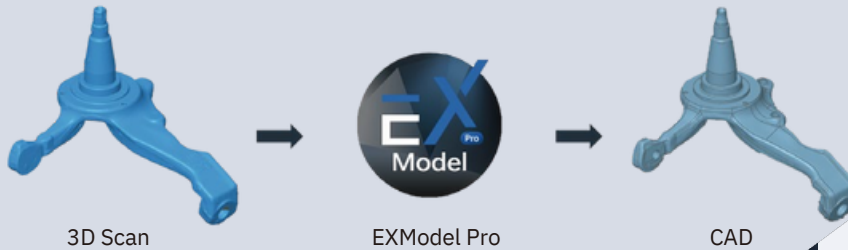


Enhanced Data Utilization



Cost-Effective Solution

Workflow



*30 days Free Trial is available to apply to EXModel.

*Function features marked with asterisk are available in EXModel Pro.

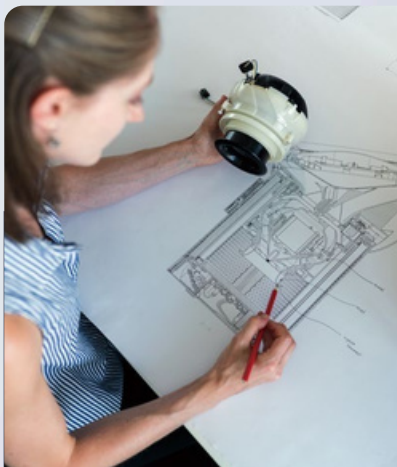
APPLICATIONS



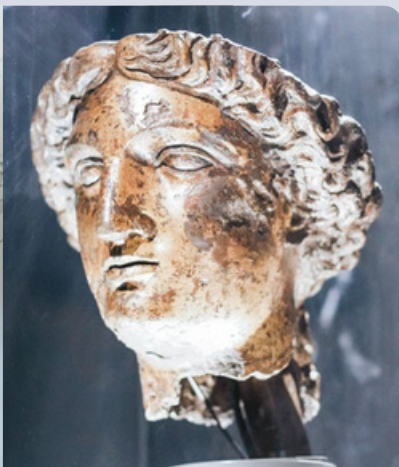
Automotive Aftermarket



Mold Manufacturing



Research & Education



Art & Culture



Wheel Hub
18 inch 8J



Paddle Board
3200 × 770 × 130 mm

TECHNICAL SPECIFICATIONS

EinScan HX2

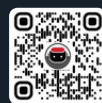
| Scan Mode | Rapid Scan | Laser Scan |
|-----------------------------|------------------------------------------------------------------------------------------------------------------------------------------|-----------------------------|
| Light source | Blue LED | 13 Crossed Blue Laser Lines |
| Scan accuracy | Up to 0.05 mm | Up to 0.04 mm |
| Volumetric accuracy | 0.05 + 0.1 mm/m | 0.04 + 0.06 mm/m |
| Point distance | 0.25 mm-3 mm | 0.05 mm - 3 mm |
| Working distance | 470 mm | |
| Depth of field | 200 mm - 700 mm | 350 mm - 610 mm |
| Maximum FOV | 420 × 440 mm | 380 × 400 mm |
| Scan speed | 1,200,000 points/s, 20FPS | 1,600,000 points/s, 120FPS |
| Alignment modes | Markers, Feature, Hybrid, Texture | Markers |
| Safety | Eye-safe | CLASS I I (eye-safe) |
| Texture scan | Built-in Color Camera | No |
| Included software | EXScan HX | |
| Connectivity | USB3.0 | |
| Output formats | OBJ; STL; ASC; PLY; P3; 3MF | |
| Dimensions | 108 × 110 × 237 mm | |
| Scanner weight | 745 g | |
| Operating temperature range | 0 - 40°C | |
| Operating humidity range | 10 - 90% | |
| Certifications | CE, FCC, ROHS, WEEE, KC | |
| Recommended configuration | OS: Win10/11, 64-bit; Graphics card: NVIDIA RTX3060 or better; Video memory: ≥6GB; Processor: Intel i7-12700 or better; Memory: ≥32GB | |
| Required configuration | OS: Win10, 64-bit; Graphics card: NVIDIA RTX2060 or better; Video memory: ≥4GB; Processor: Intel I7-8700 or better; Memory: ≥16GB | |



LinkedIn



Youtube



Website