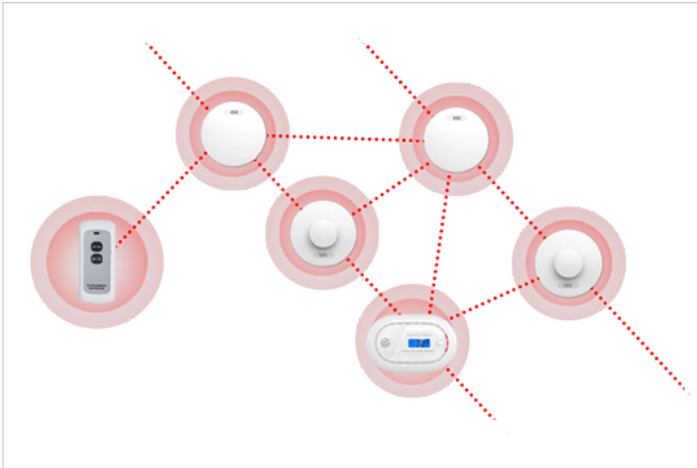


Interlinked Fire Alarm System



Wireless Interlinked
10-Year Battery Life
Easy to Install
Low Battery Alert
360° Detection

[Chat Online](#)

[Quote Now](#)



Description

INTERLINKED SMOKE & HEAT & CARBON
MONOXIDE ALARMS, MADE EASY!

Built-in 10 years Lithium Battery

Easy to mount with screws or strong adhesive pads supplied

Easy to test by pressing centre button or using the IR Remote

Built-in Interlinked Wireless Technology

Smoke Alarm Compliance: BS EN14604:2005

Heat Alarm Compliance: BS 5446-2:2003

Carbon Monoxide Detector Compliance: EN 50291-1

This Bundle is suitable for the updated Scottish Fire Alarm Legislation

Features

Wireless Interlinked

10-Year Battery Life

Easy to Install

Low Battery Alert

360° Detection

YB030 Smoke Detector



Working voltage: DC 9V (alkaline battery; 6LR61; 500mah)

Alarm mode: Audible&visual alarm

Alarm sound: $\geq 85\text{dB}@3\text{m}$

Battery life: ≥ 5 year

Alarm classification: Fire alarm, fault alarm and low power alarm

[Chat Online](#)

[Quote Now](#)



Description

The independent photoelectric smoke fire detection alarm YB030 detects the fire through the principle of dual optical path scattering. Scattered light's intensity can identify whether there is smoke or not. When the smoke reaches a certain concentration, that is, the light intensity received by detector reaches a presetting level, the detector will give an audible and visual alarm.

Features

Dual optical path design to avoid false alarm

New design

EN14604 pending

Application

The product can effectively detect the visible smoke generated by the smoldering of the fire at the early stage, so that users can notice the danger in time or organize personnel evacuation. It is suitable for various places such as home, school, store, factory, hotel and so on.

Specifications

Product model	YB030
Working voltage	DC 9V (alkaline battery; 6LR61; 500mah)
Alarm mode	Audible&visual alarm
Alarm sound	$\geq 85\text{dB}@3\text{m}$
Battery life	≥ 5 year
Working temperature	$-10^{\circ}\text{C} \sim +55^{\circ}\text{C}$
Relative humidity	$\leq 95\% \text{RH}$
Alarm classification	Fire alarm, fault alarm and low power alarm
Executive standard	EN 14604: 2005
Product size	$\Phi 90\text{mm} \times \text{H}56\text{mm}$

Info Request

YB032 10 Years Battery Smoke Detector



Dual optical path design to avoid false alarm
10 years battery life
New design
EN14604 pending

[Chat Online](#)

[Quote Now](#)



Description

The independent photoelectric smoke fire detection alarm YB032 detects the fire through the principle of dual optical path scattering. The photoelectric sensor with special structure is used in the smoke detector.

Features

Dual optical path design to avoid false alarm
10 years battery life
New design
EN14604 pending

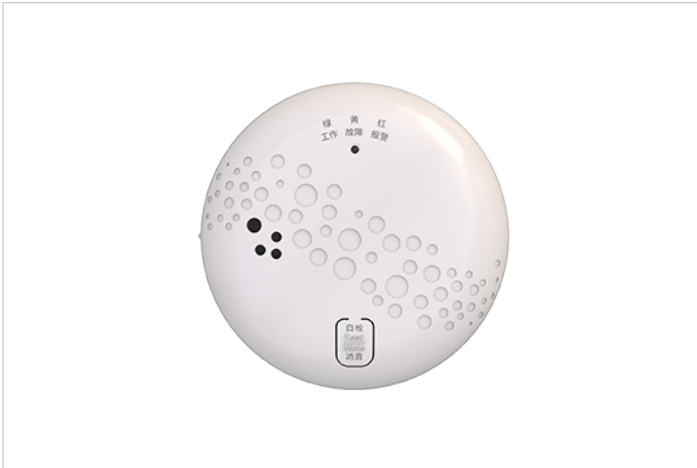
Application

The product can effectively sense the visible smoke which may appear at the very beginning of fire. It can greatly help people to withdraw timely from the fire scene and be far away from fire danger. This device can be widely used in home, school, shop, factory and hotel etc.

Specifications

Product name	Independent photoelectric smoke fire detection alarm
Product model	JTY-GF-YB032
working voltage	DC3.0V (Lithium battery; CR17450; 2400mah)
Alarm mode	Audible&visual alarm
Alarm sound	≥85dB@3m
Battery life	≥ 10 years
working temperature	-10°C~ + 55°C
relative humidity	≤95%RH
Alarm classification	Fire alarm, fault alarm and low power alarm
Executive standard	EN 14604: 2005
Product size	Φ90mm×H56mm

YB037 WIFI Smoke Detector



Dual optical path design, fast response
Easy for installation
3 years battery lifetime
Alarm mode: Audible&visual alarm
Alarm sound: $\geq 85\text{dB}@3\text{m}$

[Chat Online](#)

[Quote Now](#)



Description

YB037 is a photoelectric smoke detector which can support TUYA WiFi wireless transportation. It adopts photoelectric sensor and advanced dual optical path design. When the smoke concentration reaches to danger level, the detector will give visual& audible alarm and send warning information to the management platform simultaneously.

Features

Dual optical path design, fast response and effectively reduce false alarm, more reliable

Easy for installation

3 years battery lifetime

5 types of alarm: audible and visual alarm on device, phone call notification, message notification, platform indication and APP indication

Alarm silencing function, support silencing function operated through platform

Support TUYA wifi communication mode

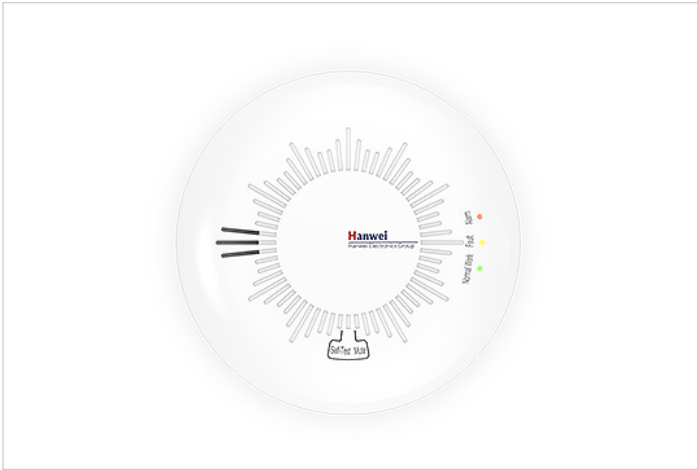
Application

The product can effectively sense the visible smoke which may appear at the very beginning of fire. It can greatly help people to withdraw timely from the fire scene and be far away from fire danger. This device can be widely used in home, school, shop, factory and hotel etc.

Specifications

Product name	TUYA wifi smoke fire detection alarm
Product model	JTY-GF-YB037
Working voltage	DC 3V 2400mAh
Alarm mode	Audible&visual alarm
Alarm sound	$\geq 85\text{dB}@3\text{m}$
Battery life	≥ 3 year
Working temperature	$-10^{\circ}\text{C} \sim +55^{\circ}\text{C}$
Relative humidity	$\leq 95\% \text{RH}$
Alarm classification	Fire alarm, fault alarm and low power alarm
Executive standard	EN 14604: 2005
Product size	$\Phi 110\text{mm} \times 42.5\text{mm}$

Dual Optical Path Smoke Detector YB035



Dual optical path design, fast response

Easy for installation

3 years battery lifetime

[Chat Online](#)

[Quote Now](#)



Description

YB035 is a photoelectric smoke detector. It adopts photoelectric sensor and advanced dual optical path design. When the smoke concentration reaches to danger level, the detector will give visual& audible alarm and send warning information to the management platform simultaneously. The product can effectively sense the visible smoke which may appear at the very beginning of fire. It can greatly help people to withdraw timely from the fire scene and be far away from fire danger. This device can be widely used in home, school, shop, factory and hotel etc.

Features

Application

This device can be widely used in home, school, shop, factory and hotel etc.

Specifications

Dual optical path design, fast response and effectively reduce false alarm, more reliable

Two indication lights for Error and Alarm, easy to recognize

Easy for installation

3 years battery lifetime

5 types of alarm: audible and visual alarm on device, phone call notification, message notification, platform indication and APP indication

Alarm silencing function, support silencing function operated through platform