

IVOR ŠKARO

Student portfolio, March 2025

NOTE

Due to file size limitations, this is a **shortened version** of the portfolio. As a result, certain projects, graphic materials and descriptions are *not included*. For the full version, please visit:

www.ivorskaro.com

Thank you!

01_House "Lom"

*low-density residential
student project*

02_Little Sljeme

*high-density residential
student project*

03_Staglišće

*elementary school
student project*

04_Wave 1

*low-density city planing
collaborative student project*

05_Wave 2

*high-density city planing
collaborative student project*

06_Complement

*landscape architecture
collaborative competition project*

07_Apartment remodeling

*interior design
professional project*

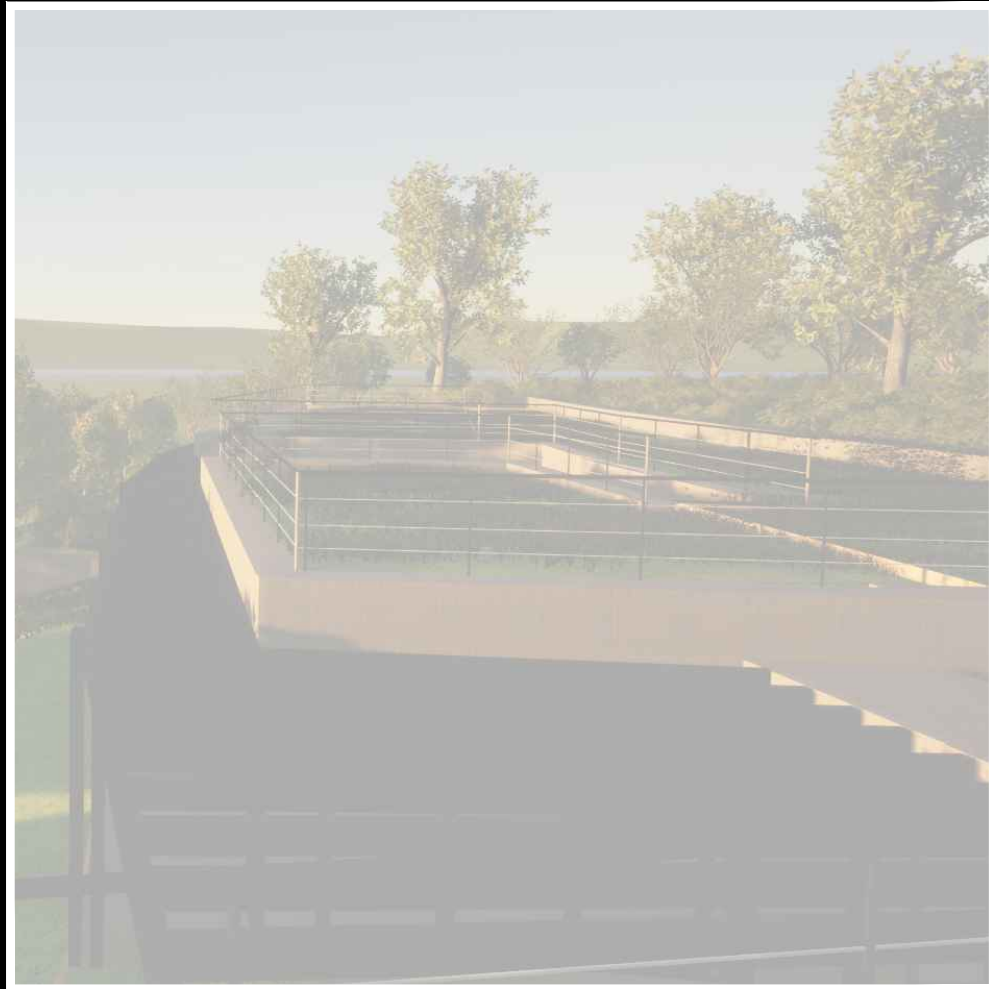
08_Student living

*residential architecture
student competition project*

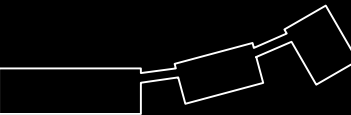
09_Žnjan residences

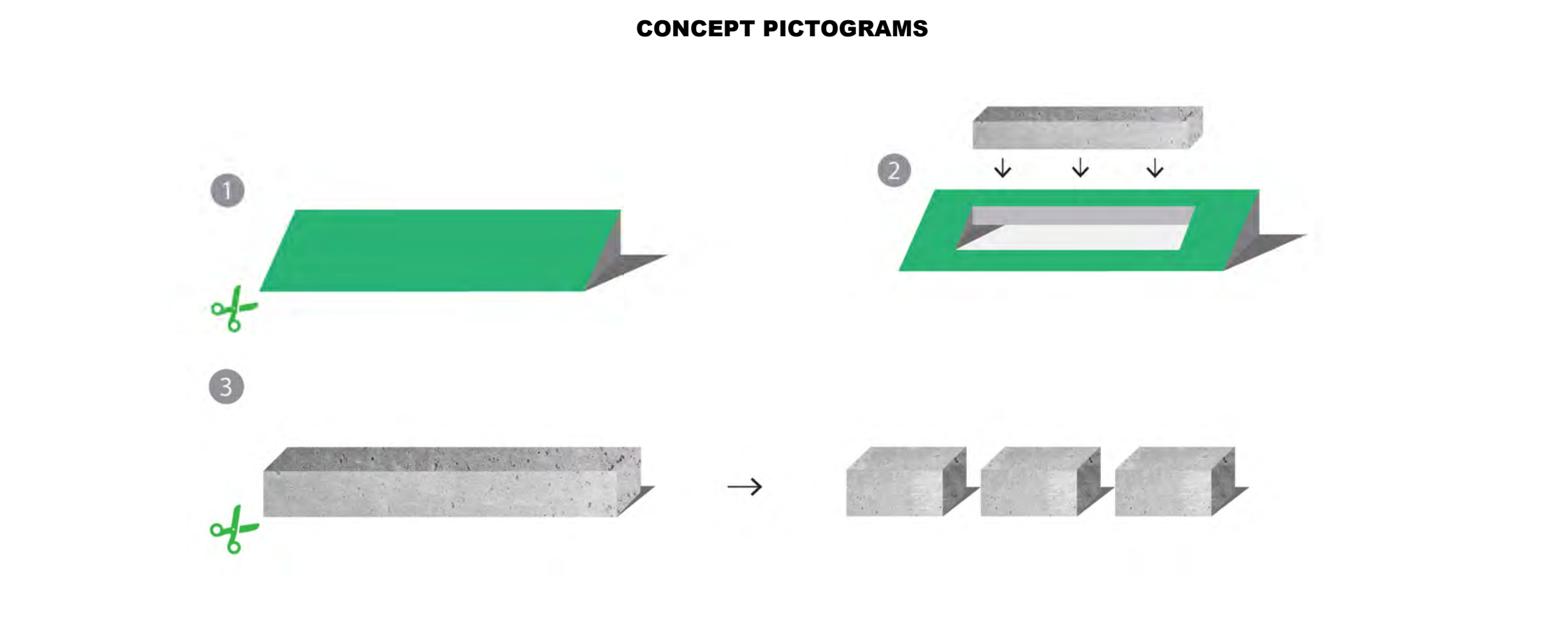
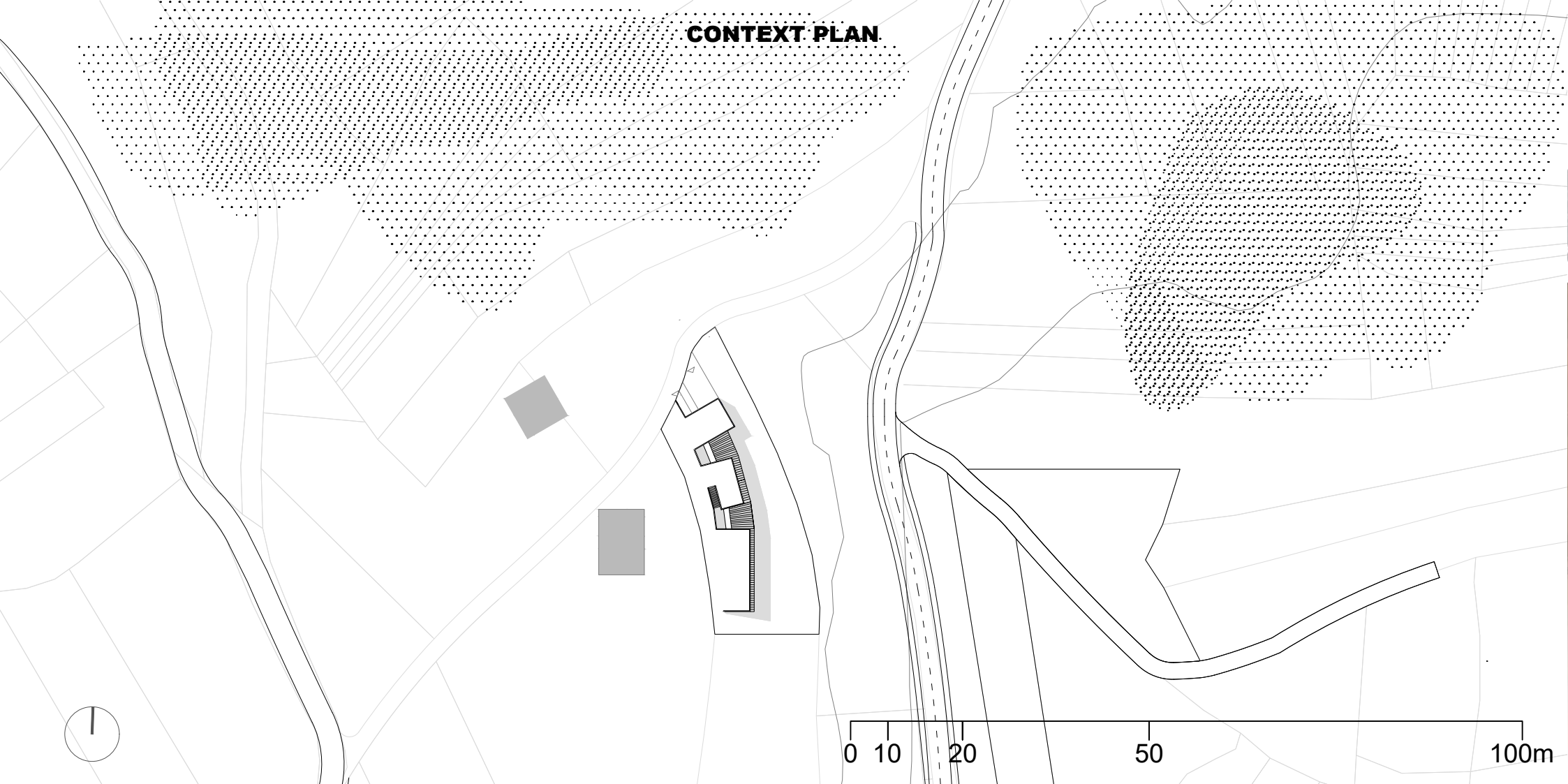
*residential architecture
professional project*

01

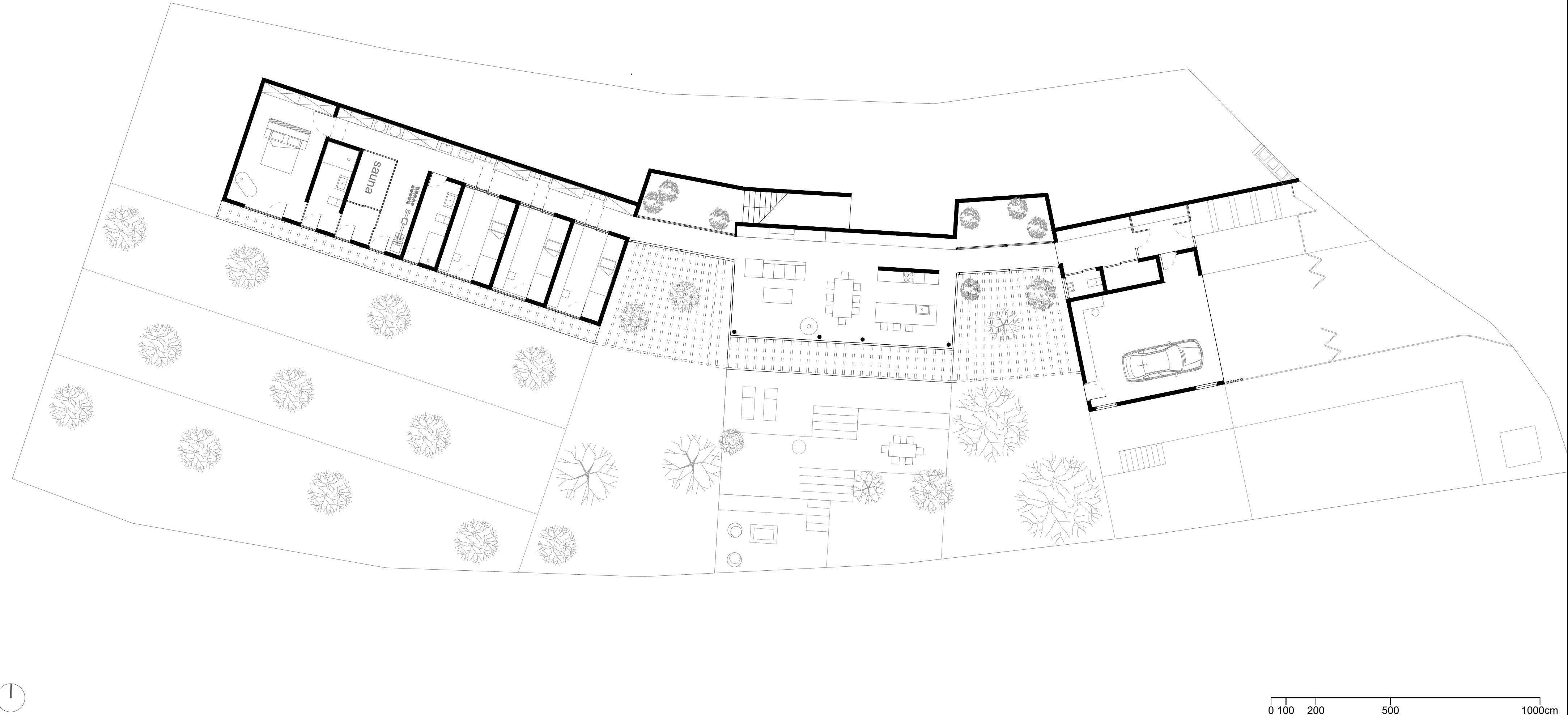


**A house is, first of all, a shelter, an artificial veil
between us and the vast beyond.
It is familiarity, it is sanctuary, it is a state of
belonging.
This house dreams of dissolving the boundary
between itself and the world, blending the natural
with the crafted.
It aims to vanish into the hill, yet hold an intimate
dialogue with the surrounding nature.
To remain unseen, yet to see everything.**

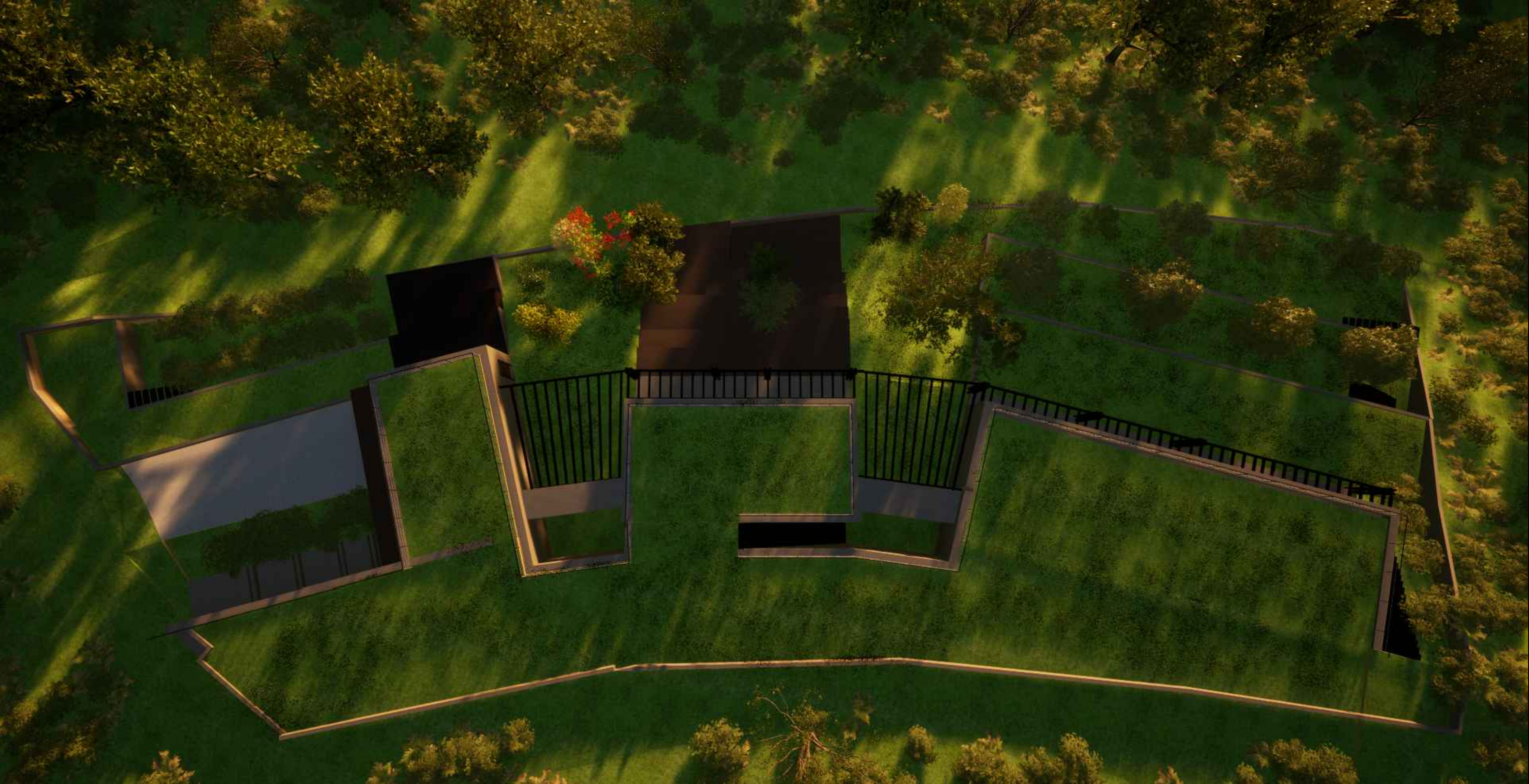




PLAN



0 100 200 500 1000cm



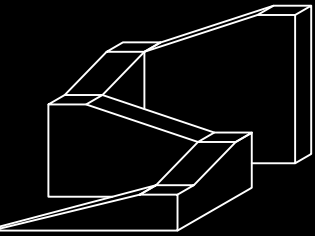
01_House "Lom"

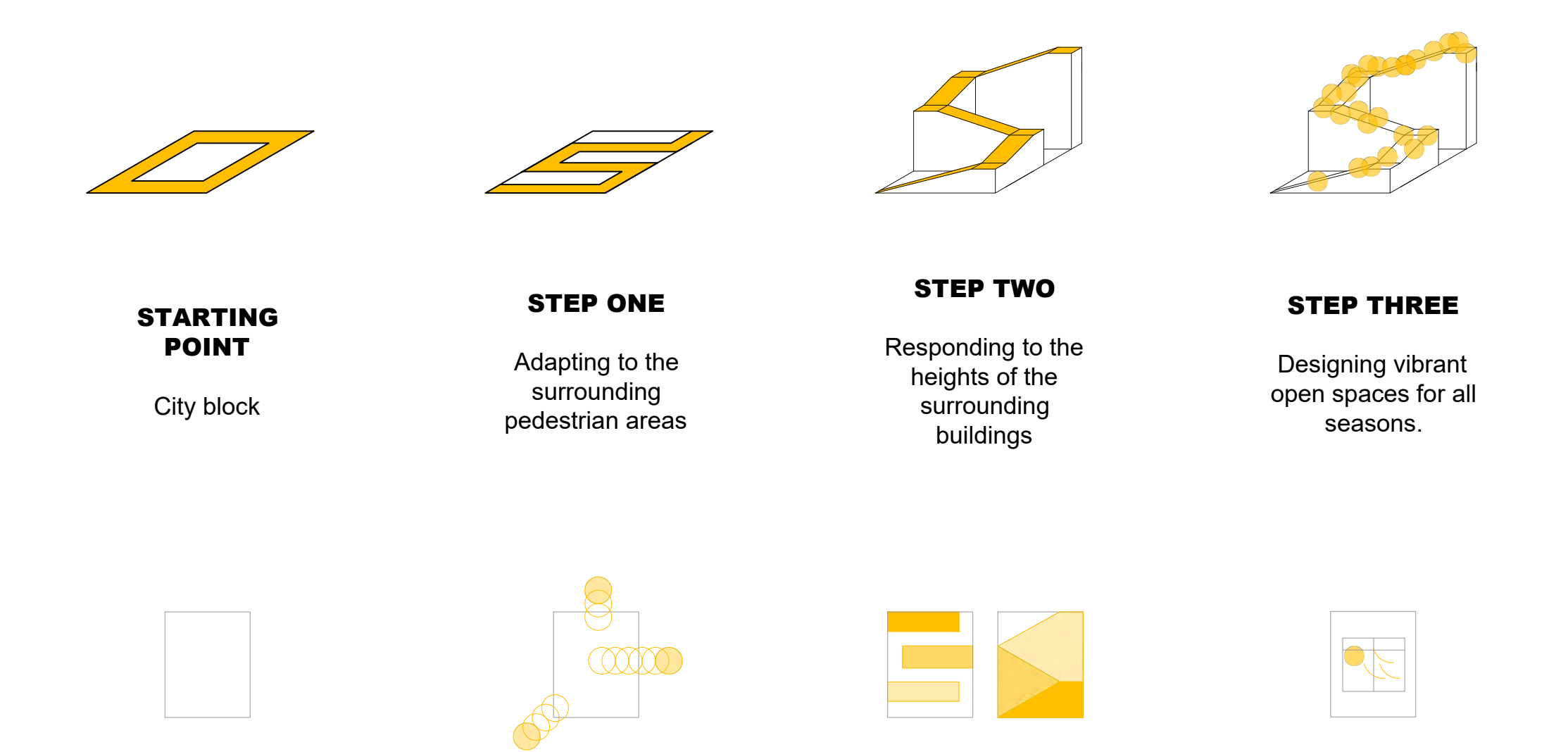
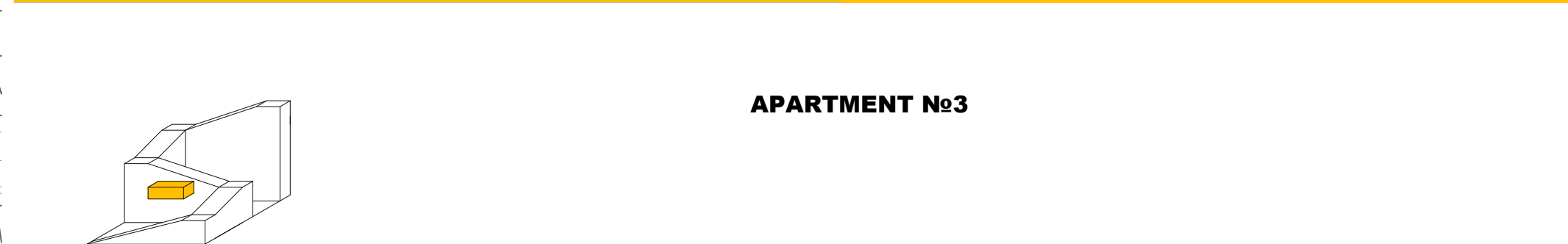
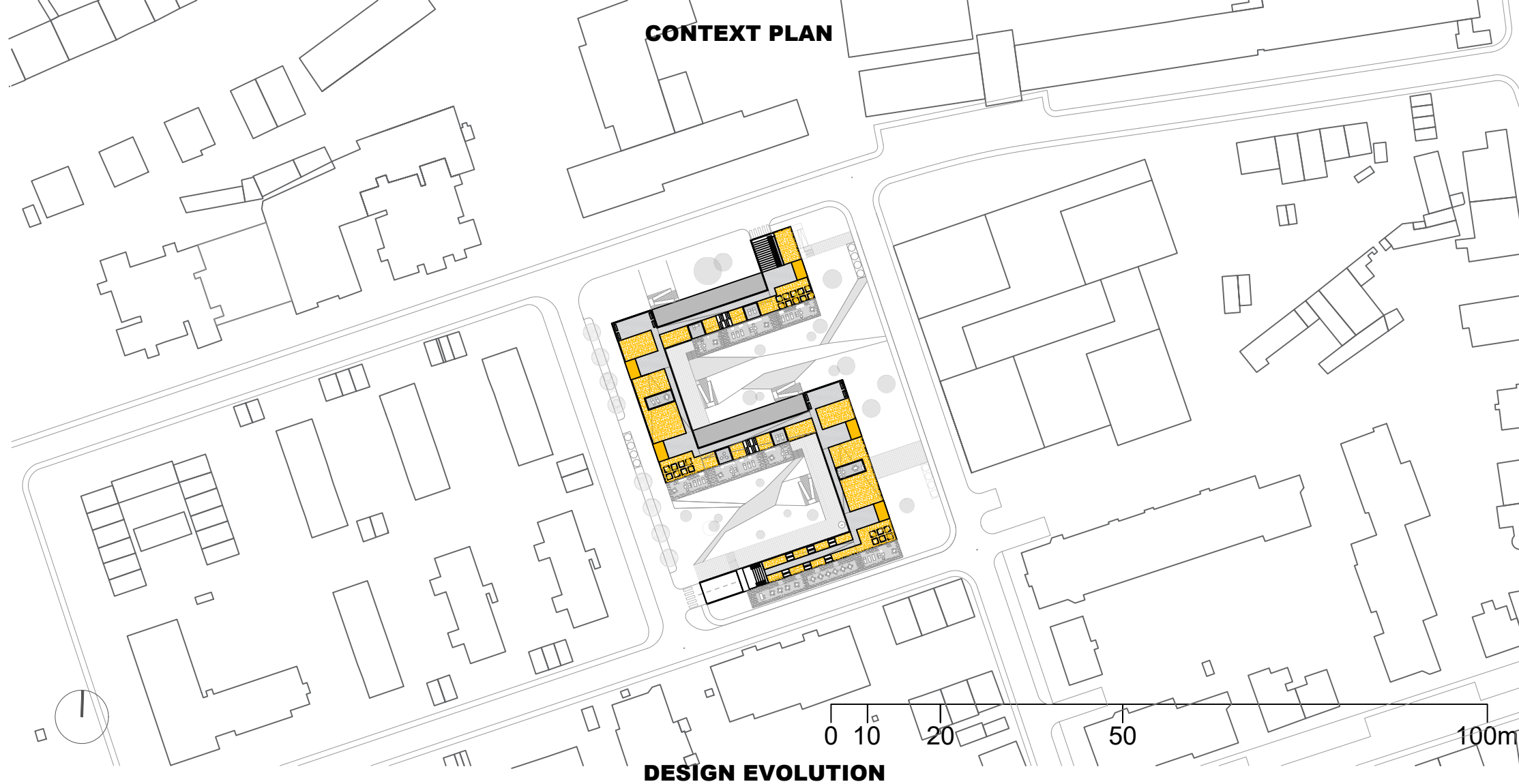
02



Zagreb is a city spatially defined by two natural elements: the meanders of the Sava River and the peaks of Mount Sljeme. Throughout history, these two features represented natural barriers to the city's expansion, but today they are cherished landscapes that offer opportunities for recreation and enjoying the outdoors.

This project seeks to echo these two defining characteristics of the city. The fluid, sculpted form of the block mirrors the meandering Sava River, while its active rooftop provides residents of the wider neighborhood with a green space for recreation and scenic views, much like Sljeme.



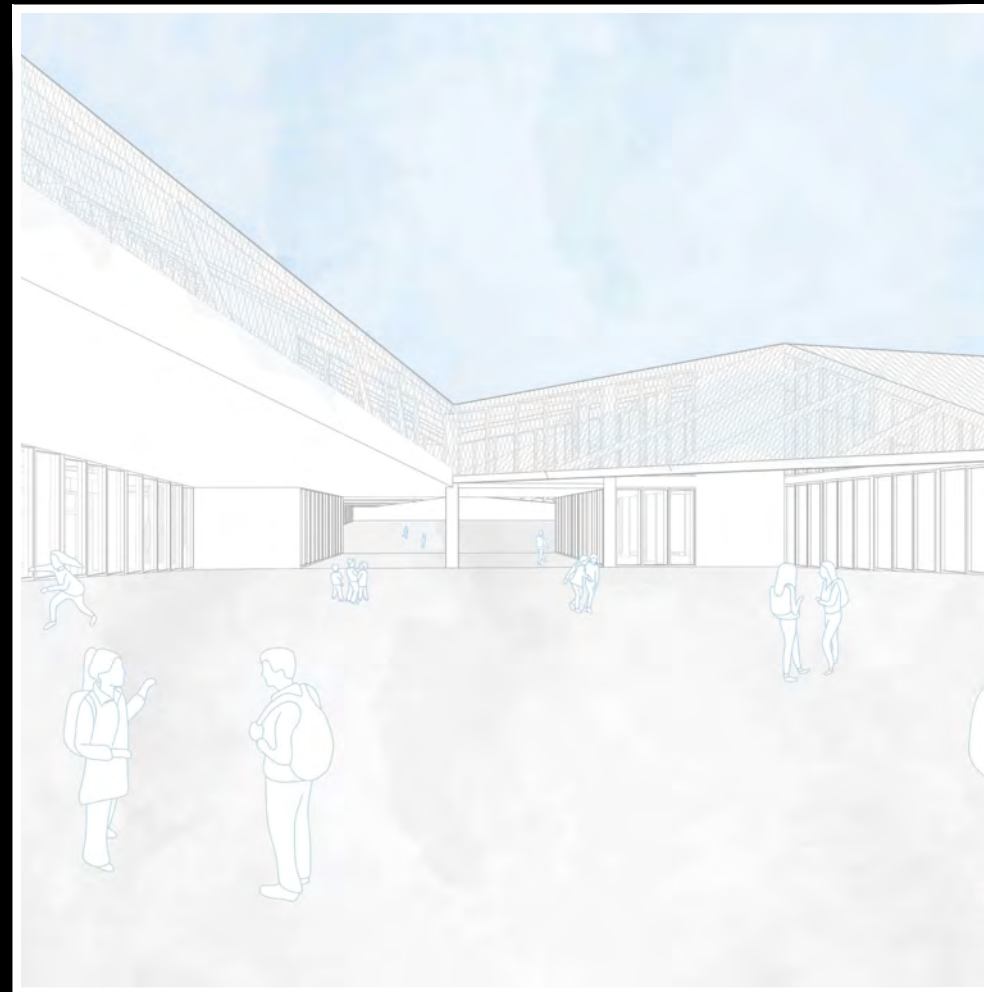
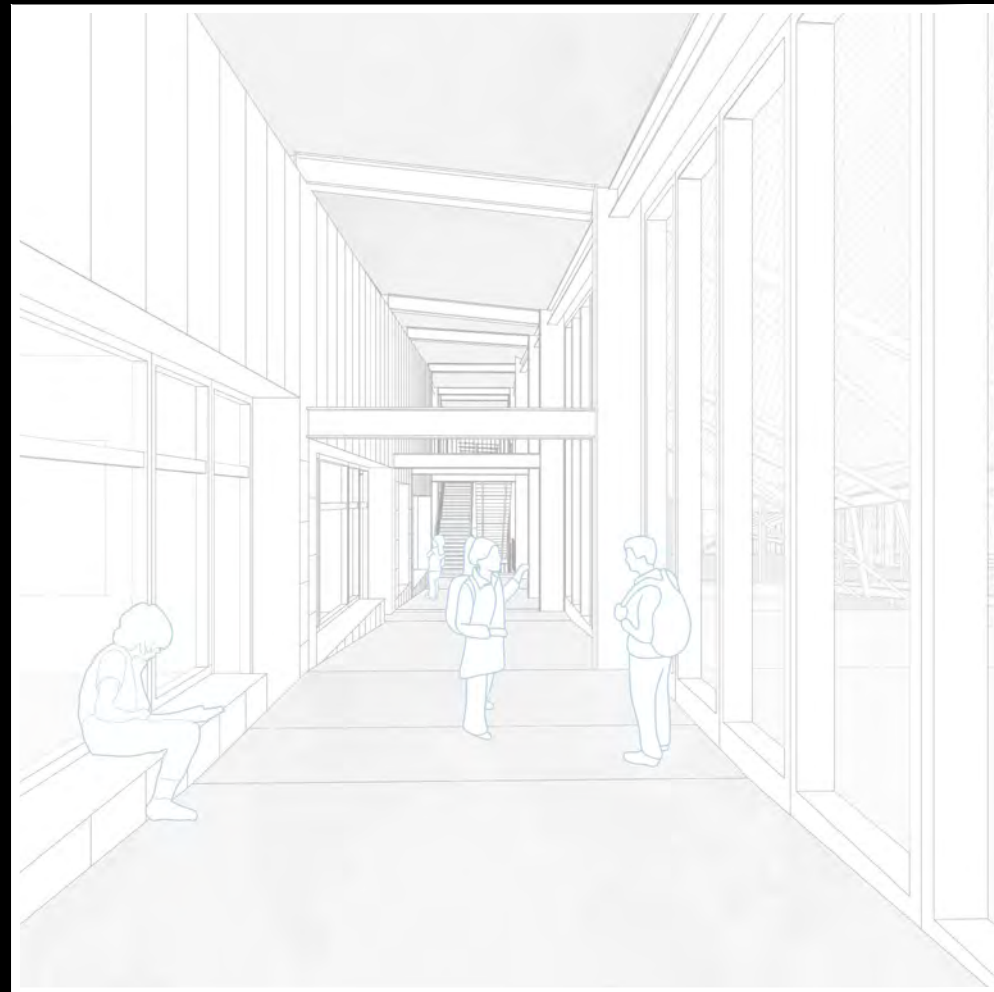




0 2 5 10 15 20m



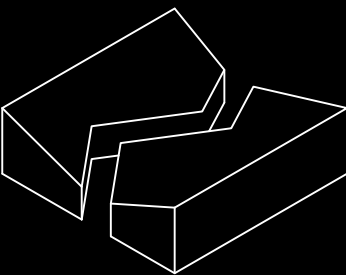
03

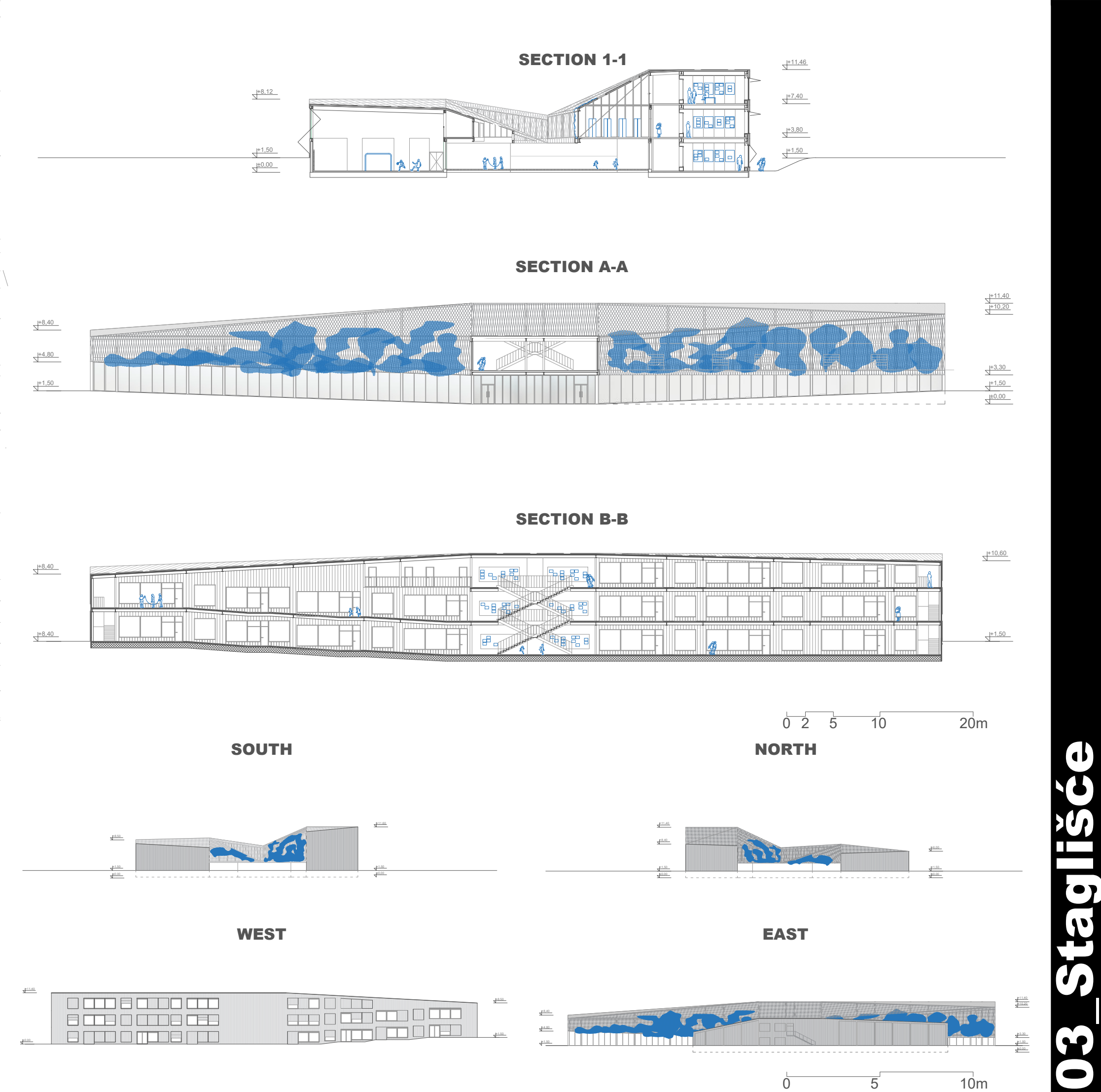
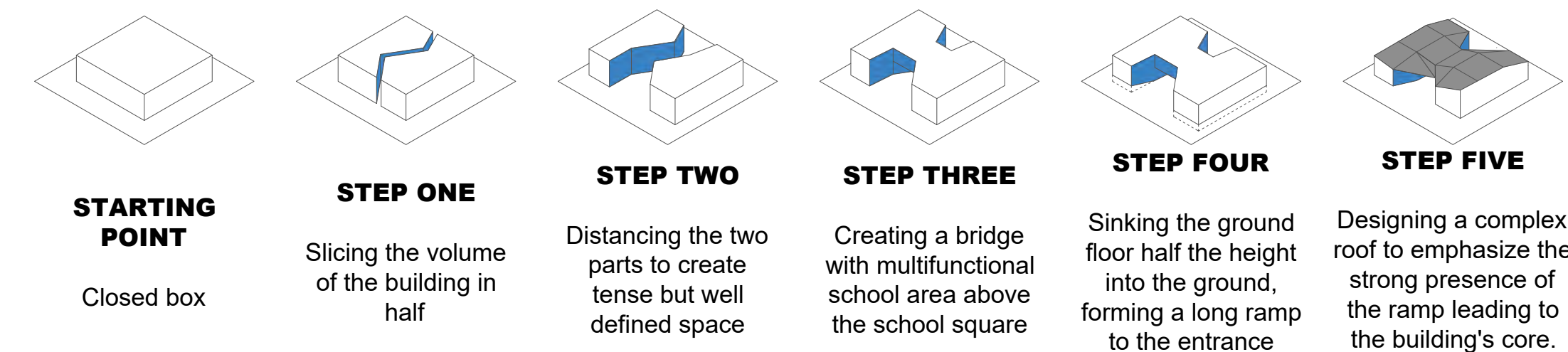
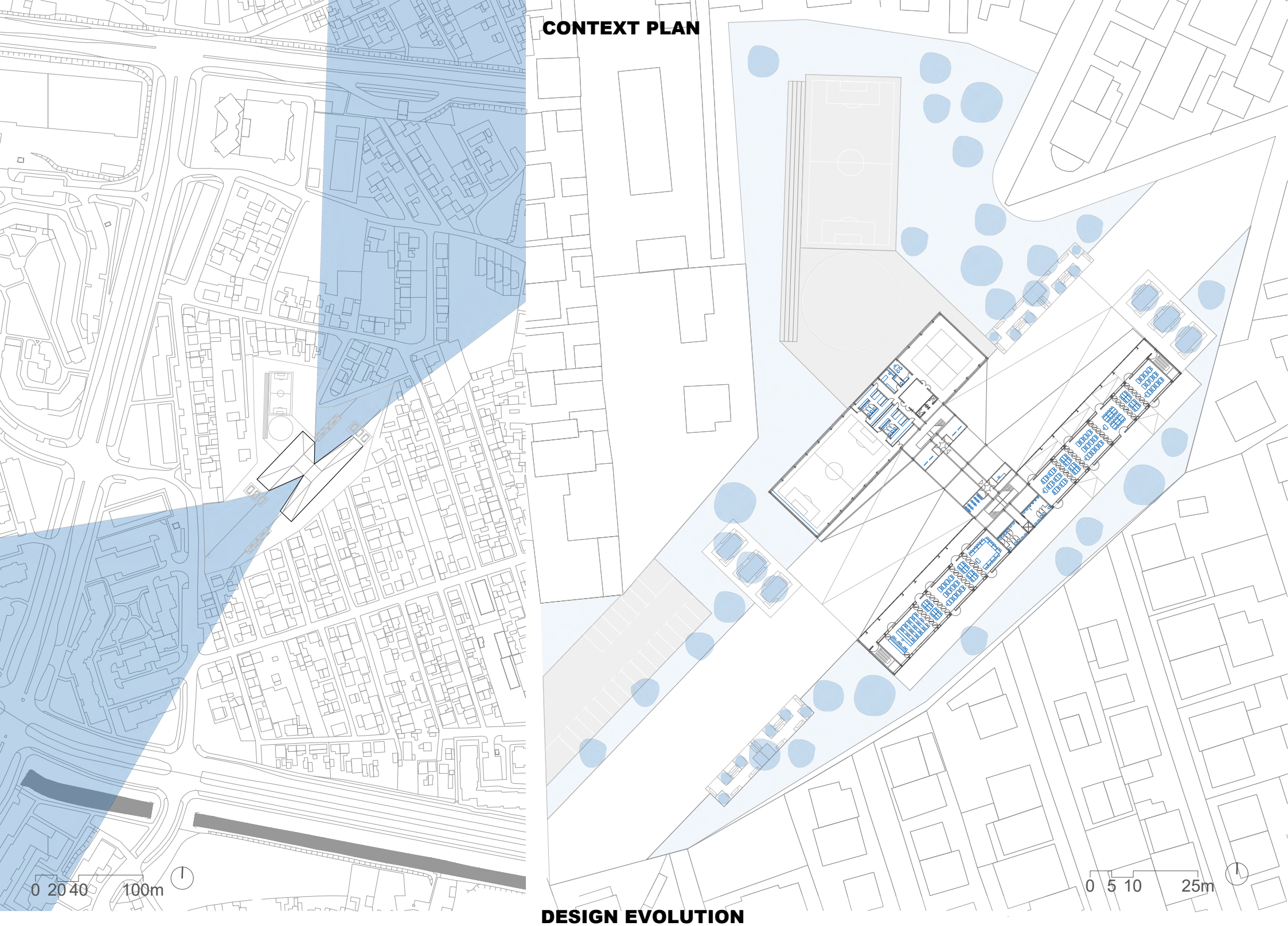


Staglišće is a densely packed neighborhood, characterized by small, unorganized lots and two-story family homes. Amidst this chaotic environment lies a large, vacant lot stretching north to south—untouched by the neighborhood's uncontrolled urbanization and designated as the future site of an elementary school.

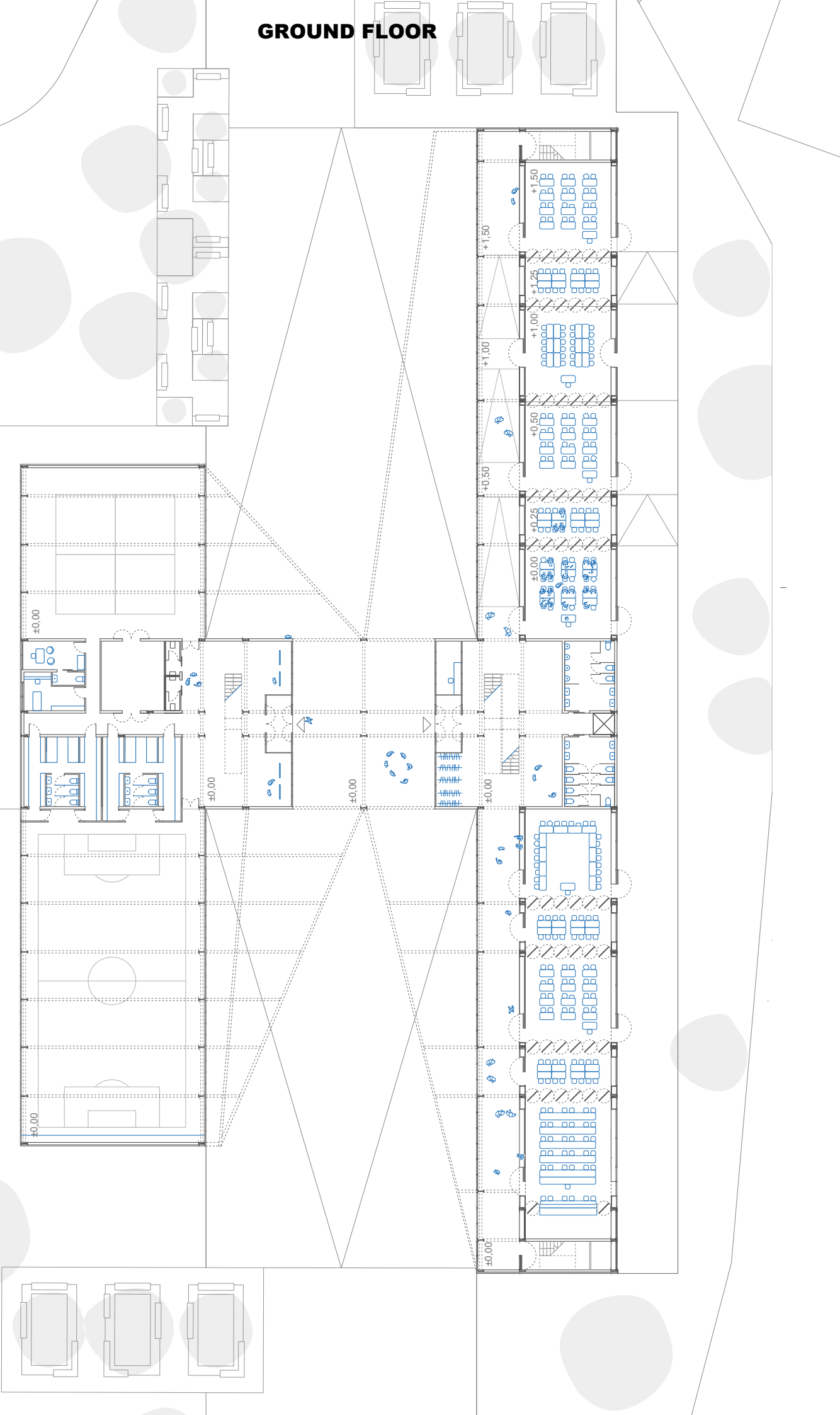
This project sees the empty space as an opportunity not only to provide a school but also to compensate for the lack of open space and urban amenities the neighborhood desperately needs.

To achieve this, a wide pedestrian street bisects the school building, creating a dynamic public space. While the school is otherwise closed off and introverted, this central slice opens the building up entirely to the created urban space, offering passersby a glimpse into the activities within. This connection transforms the school into a civic anchor, giving Staglišće a sense of identity and character it previously lacked.

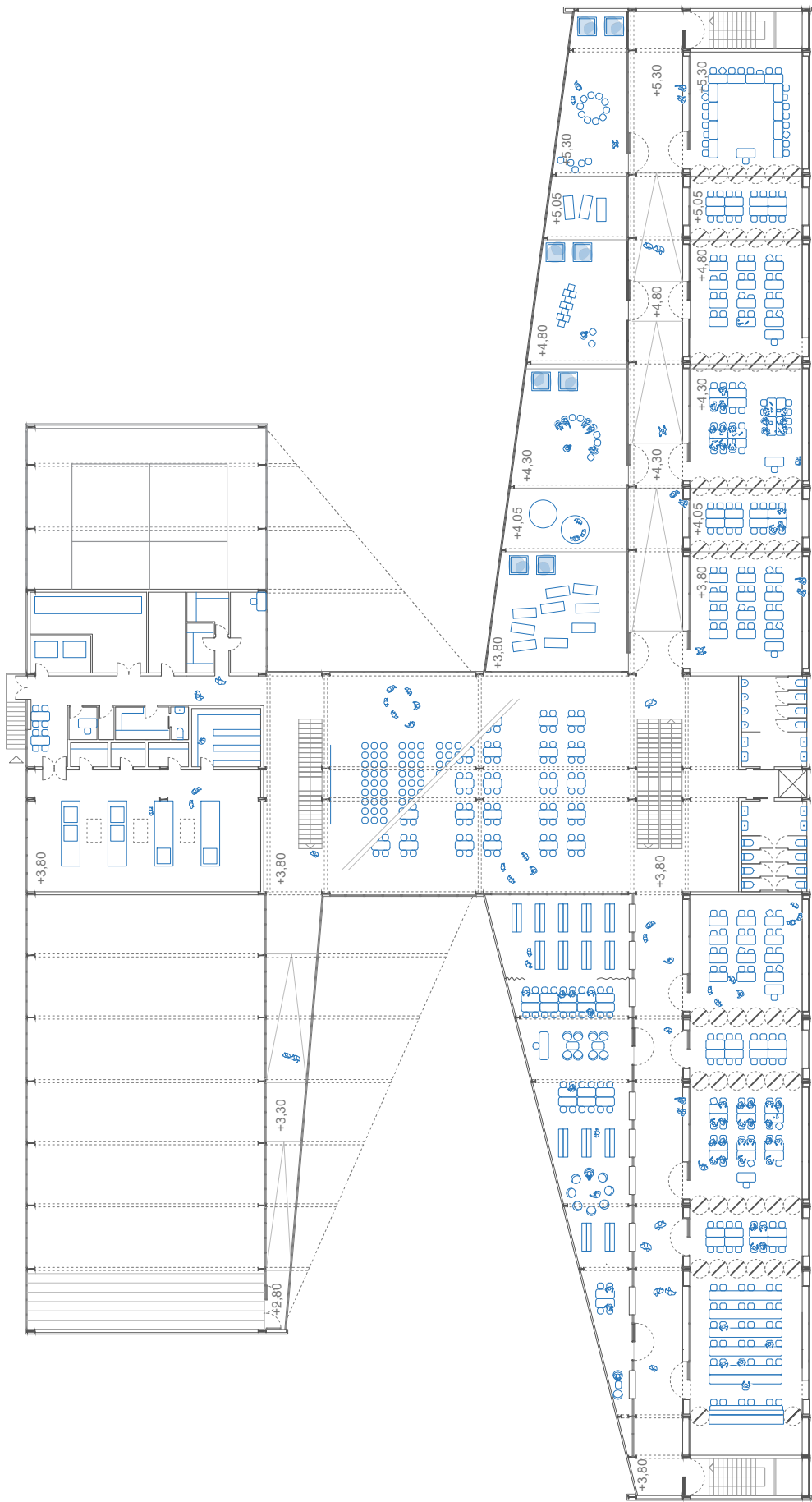




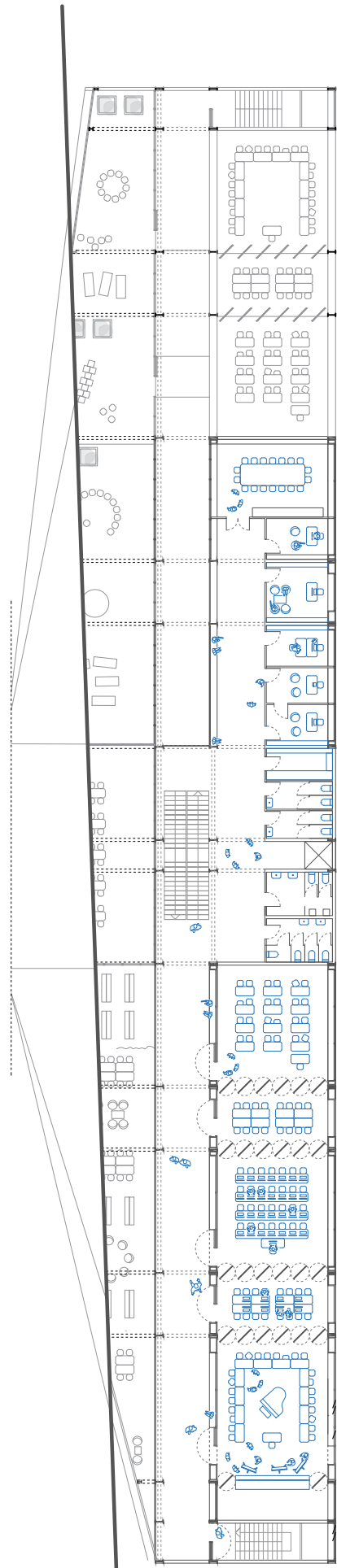
GROUND FLOOR



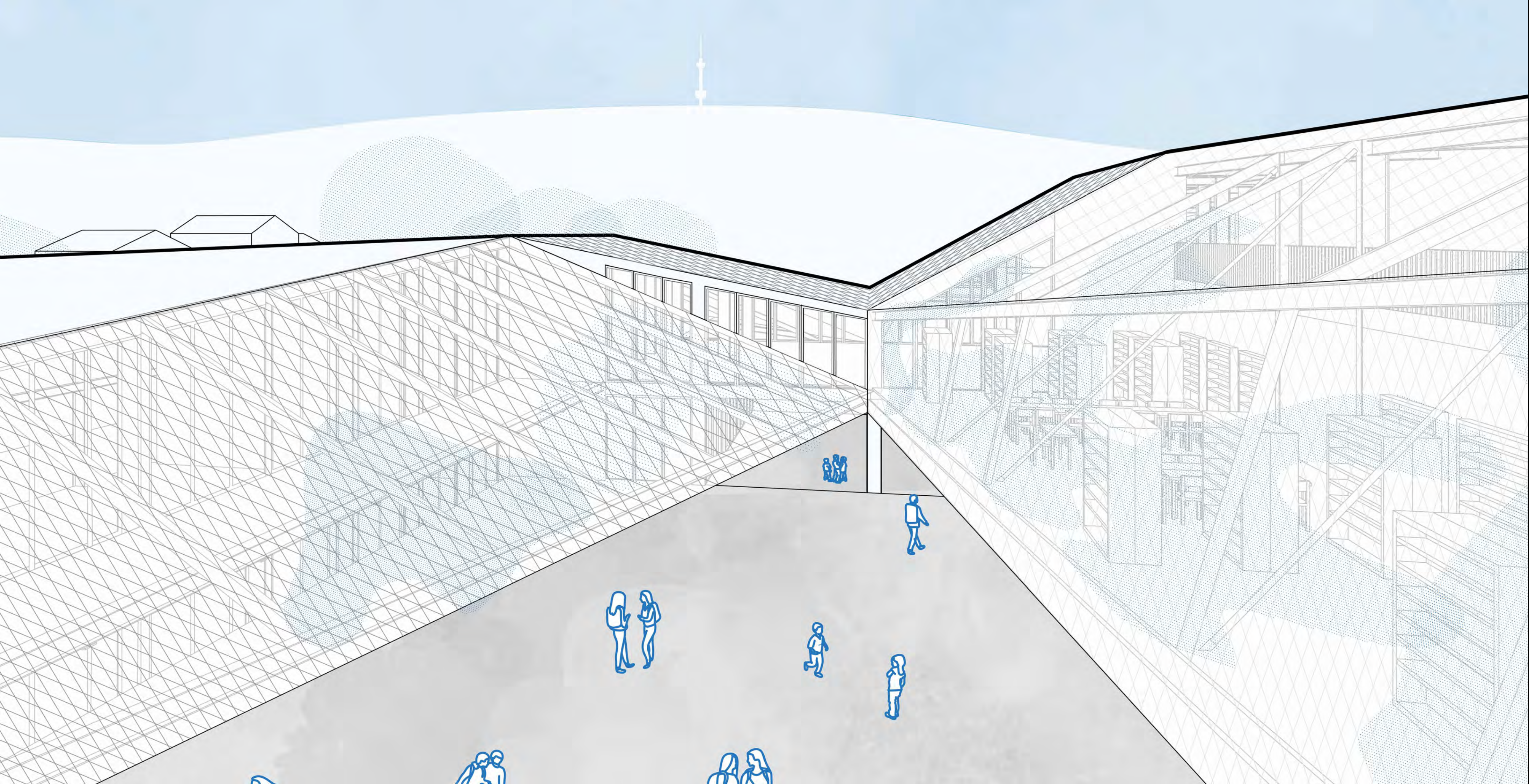
FIRST FLOOR



SECOND FLOOR



0 2 5 10 20m



04

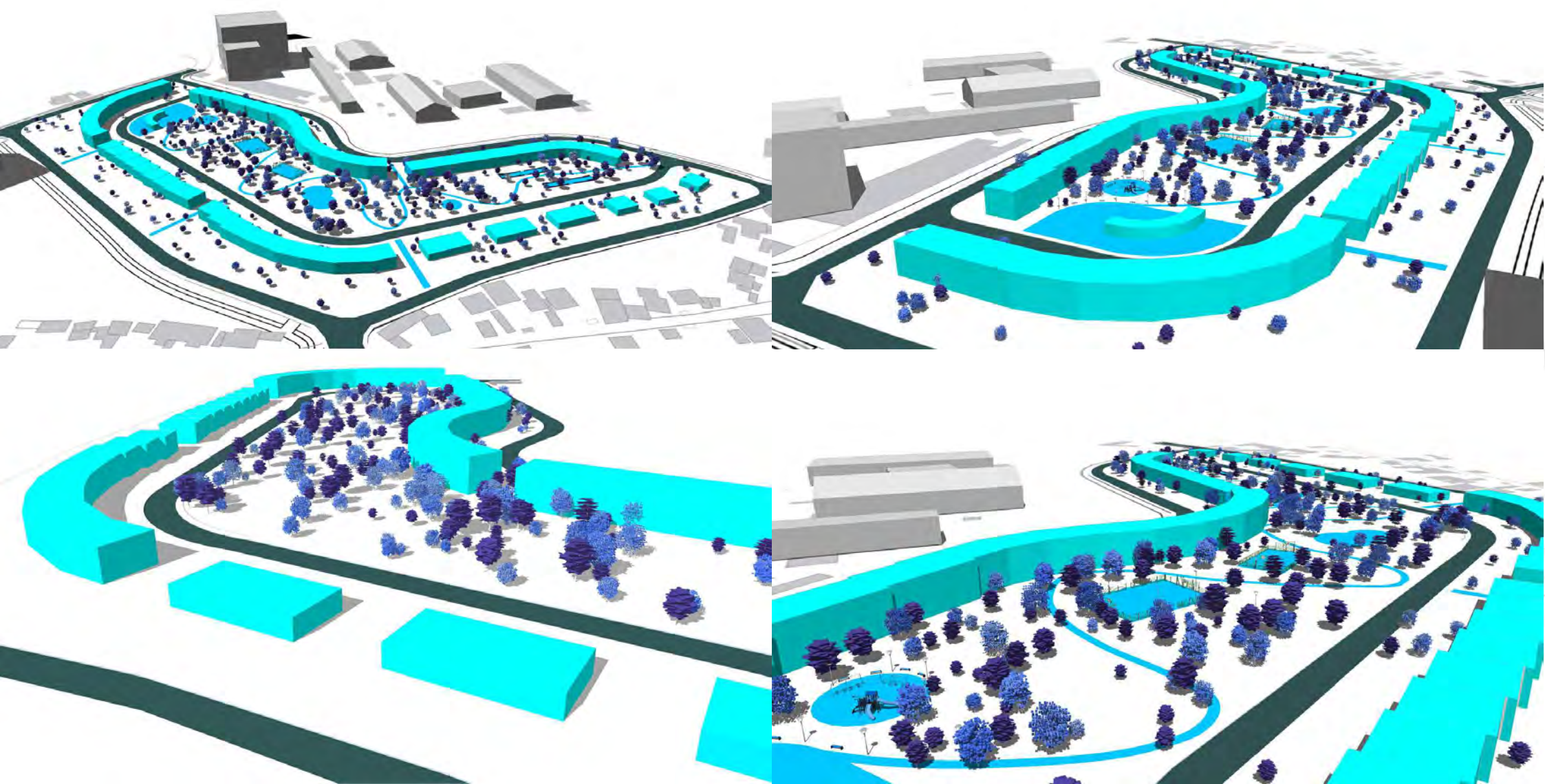


The Savica residential neighborhood is located in a rather inhospitable part of Zagreb, surrounded by a mix of outdated factories, out-of-place glass office buildings, and unplanned houses.

The core idea behind the project was to carve out a sanctuary within this harsh environment. By using architecture as a protective shield, the design frames a spacious, open green area, offering residents a safe and inviting retreat amidst the surrounding chaos.



MODEL VIEW



PLAN



DESIGN EVOLUTION



STEP ONE

Identifying the surrounding context



STEP TWO

Building a shield



STEP THREE

Opening the shield on appropriate segments



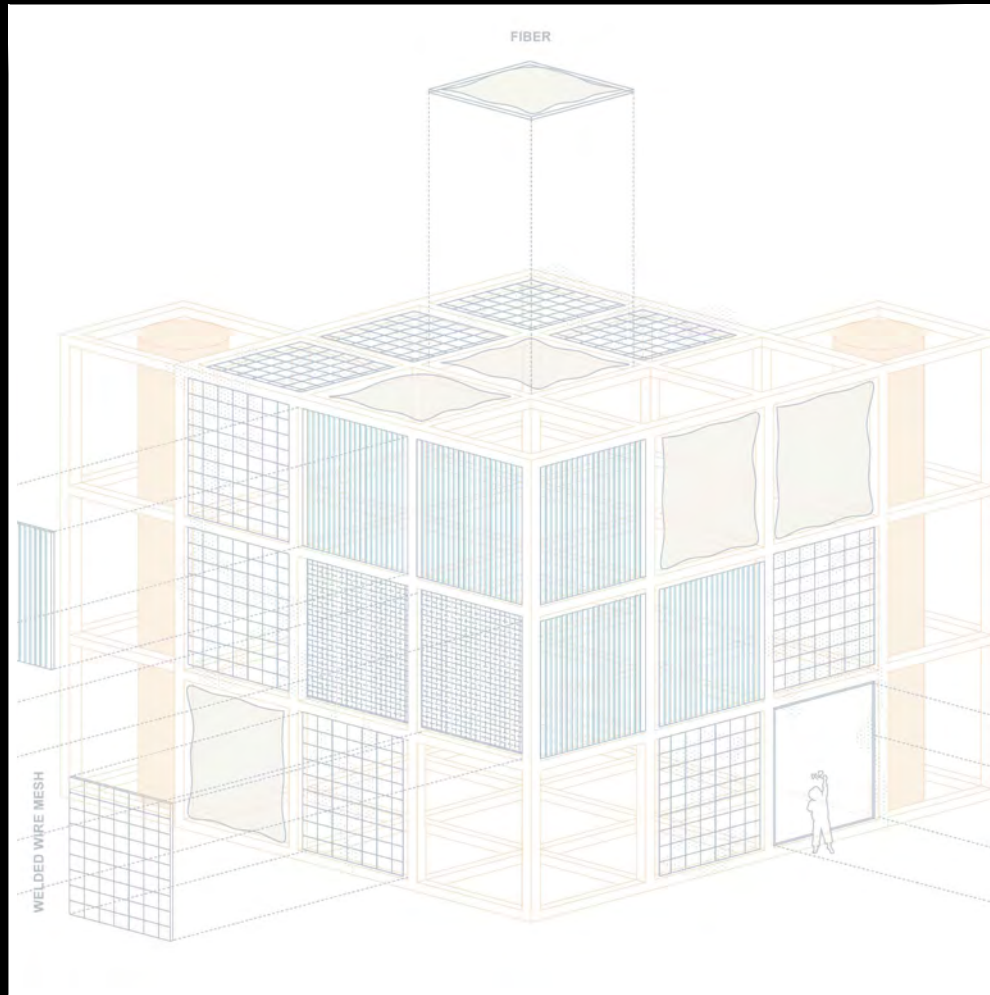
STEP FOUR

Designing a vibrant green space

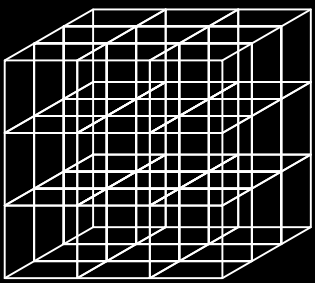
0 50 100 200m



06



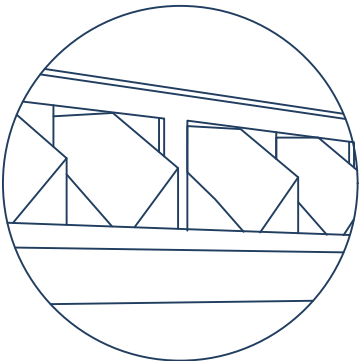
The starting point of this project was identifying a series of critical points in the city that we considered problematic. These were mostly related to outdated urban infrastructure elements, and the selected locations were treated as areas in need of temporary and swift intervention. Due to the large number of such places in the city, we propose a temporary intervention in the urban space, which, in direct dialogue with the decaying infrastructure present at the locations, would attempt to compensate for its shortcomings and mask them until they are properly addressed, creating an attractive counterpoint – their complement.



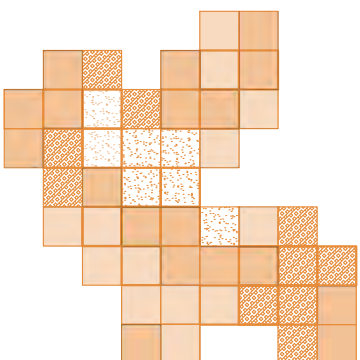


LOCATIONS MAP

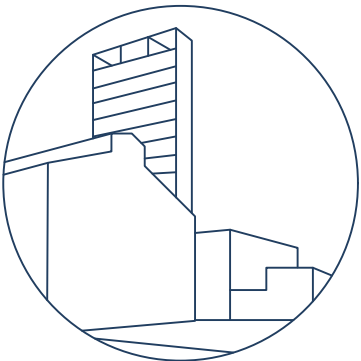
LOCATION ONE:
BUS TERMINAL



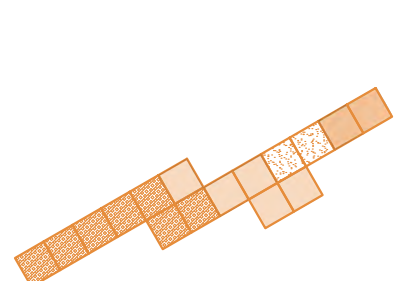
A deteriorating transportation hub



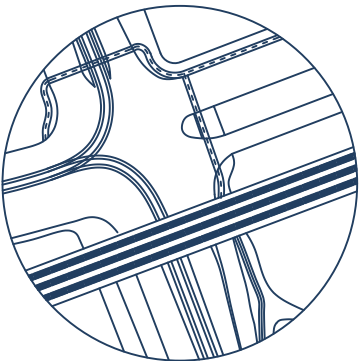
LOCATION TWO:
TEŽ IND. COMPLEX



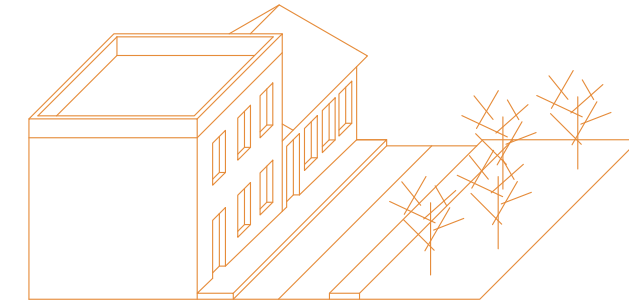
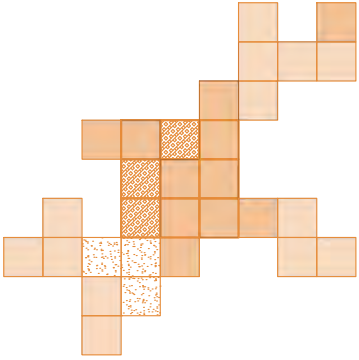
Former industrial complex



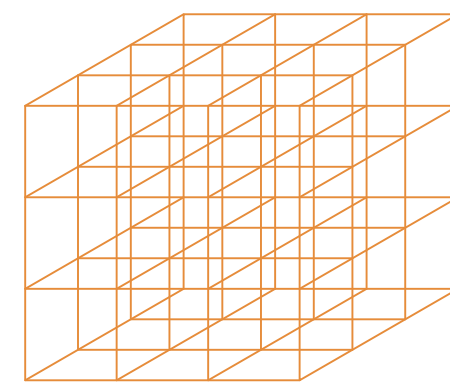
LOCATION THREE:
DRŽIČEVA-BRANIMIROVA
INTERSECTION



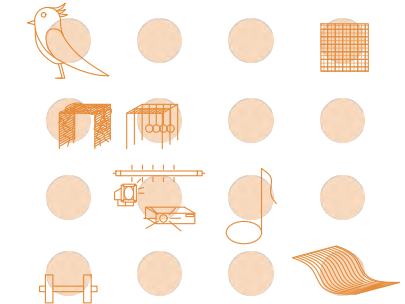
Turbulent unfinished intersection



IDENTIFYING
CHALLENGES OF
THE LOCATION

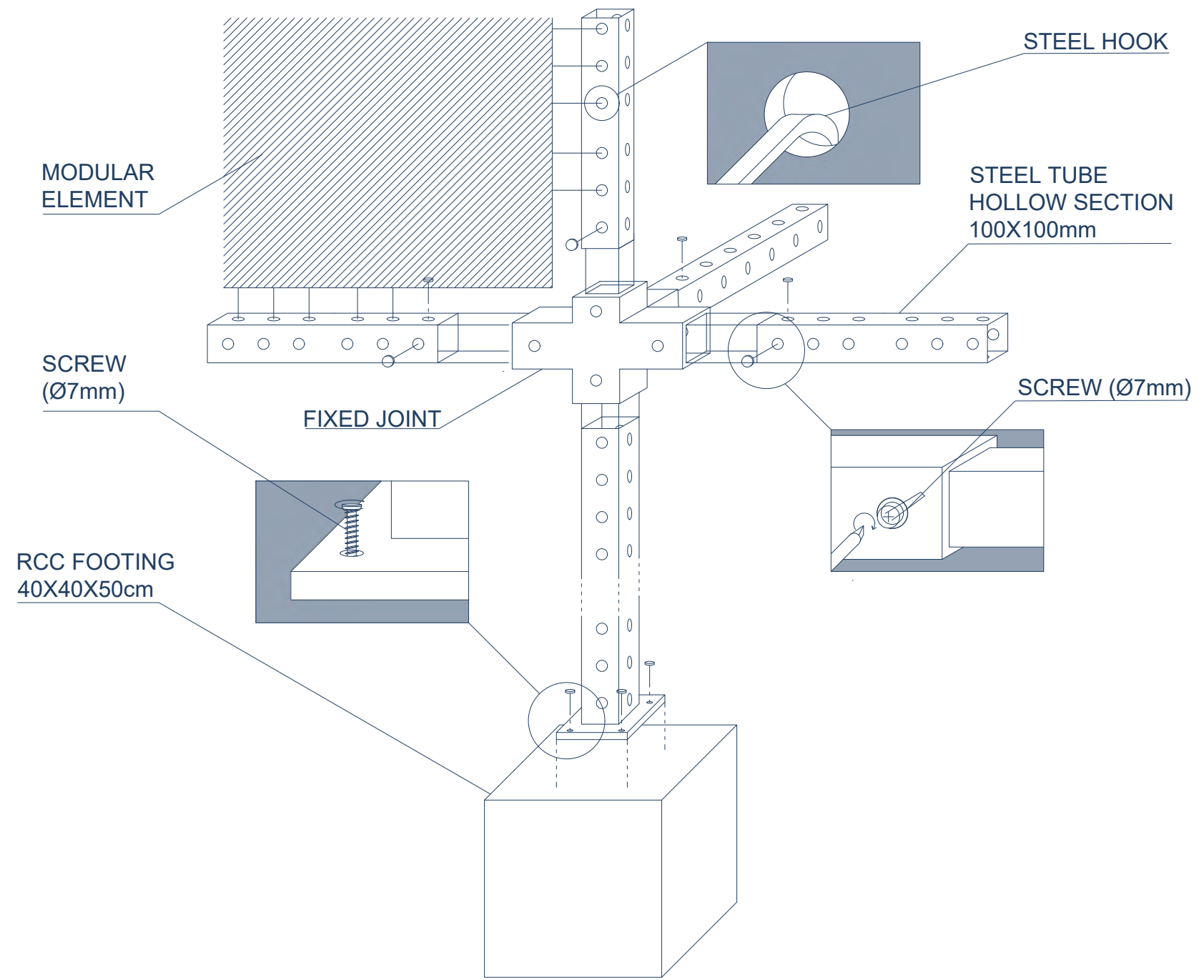


SETTING UP 2D AND
3D **GRID**

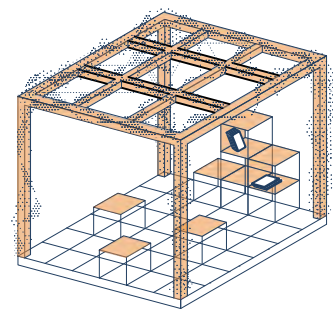


INSTALLING
MODULAR
ELEMENTS

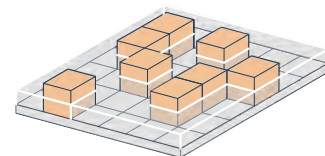
FRAME ASSEMBLY MANUAL



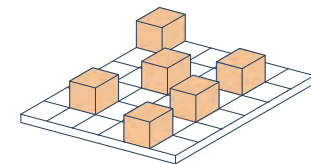
MODULE CATALOGUE



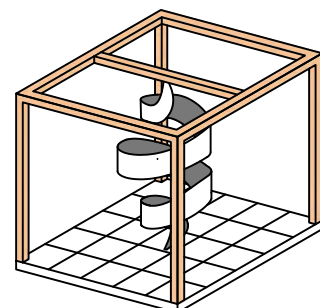
OPEN-AIR
LIBRARY



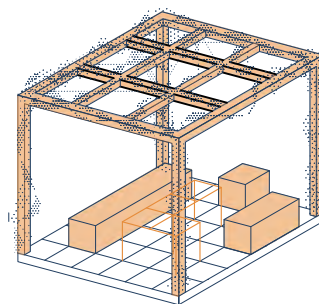
FOUNTAIN



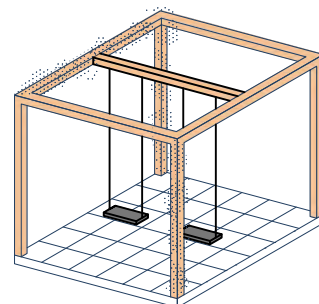
JUMPING STONES



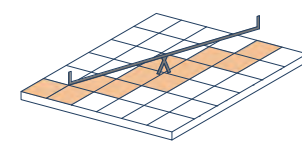
MERRY-GO-ROUND



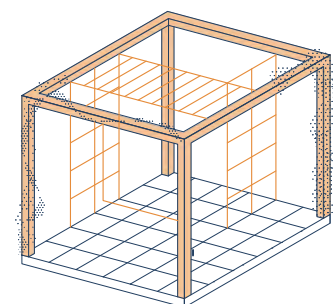
REST AREA



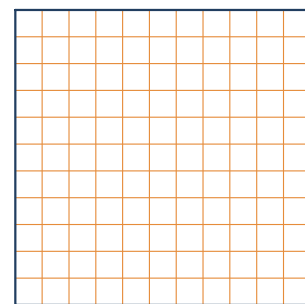
SWING



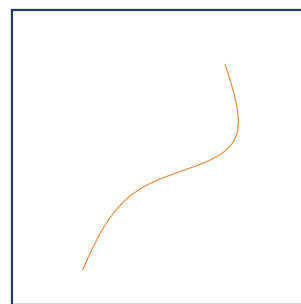
SEE-SAW



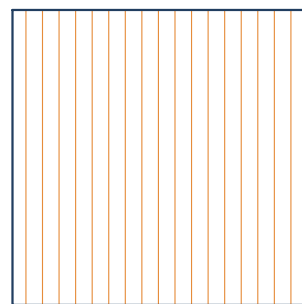
JUNGLE GYM



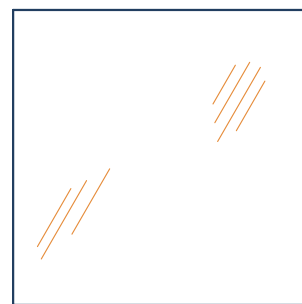
WELDED WIRE
MESH



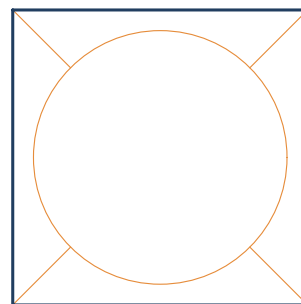
FIBER



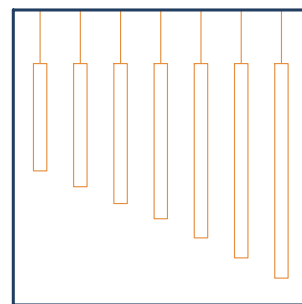
POLYCARBONATE



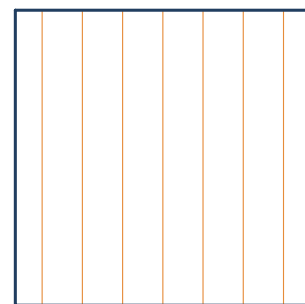
ACRYLIC GLASS



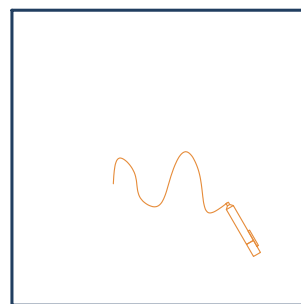
DRUM



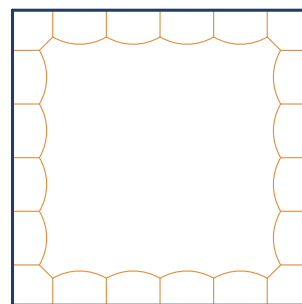
WIND DRUM



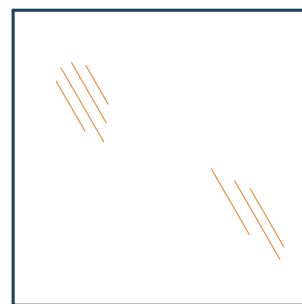
WIRES



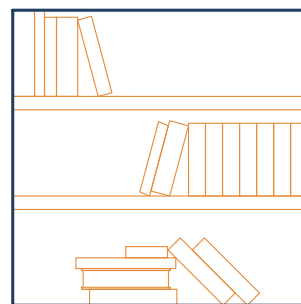
DRAWING
BOARD



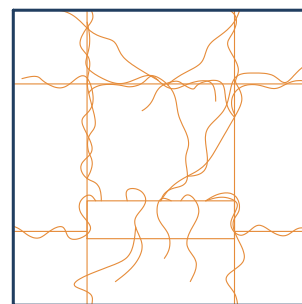
TRAMPOLINE



MIRROR



BOOKSHELVES



VERTICAL
GARDEN

