

IVOR ŠKARO

Student portfolio, January 2025

NOTE

Due to file size limitations, this is a **shortened version** of the portfolio. As a result, certain projects, graphic materials and descriptions are *not included*. For the full version, please visit:

www.ivorskaro.com

Thank you!

01_House "Lom"

*low-density residential
student project*

02_Little Sljeme

*high-density residential
student project*

03_Staglišće

*elementary school
student project*

04_Wave 1

*low-density city planing
collaborative student project*

05_Wave 2

*high-density city planing
collaborative student project*

06_Complement

*landscape architecture
collaborative competition project*

07_Apartment remodeling

*interior design
professional project*

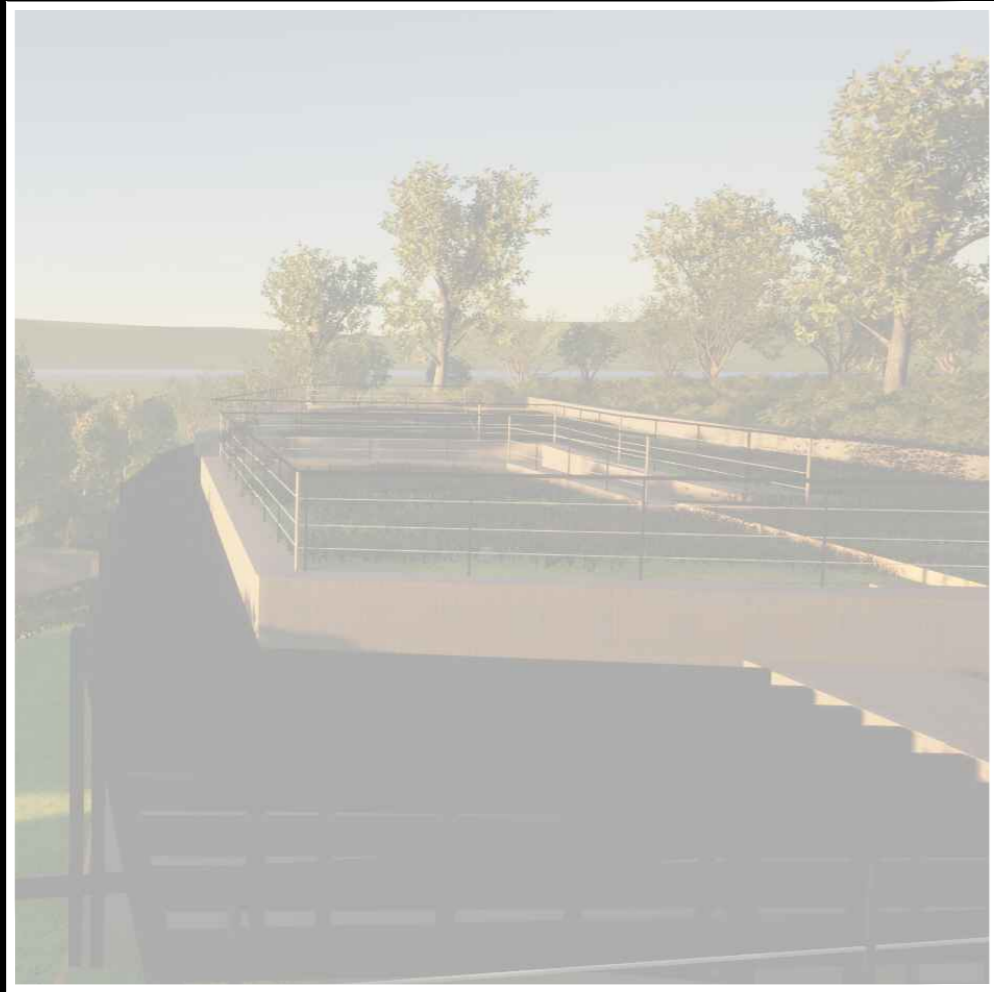
08_Student living

*residential architecture
student competition project*

09_Žnjan residences

*residential architecture
professional project*

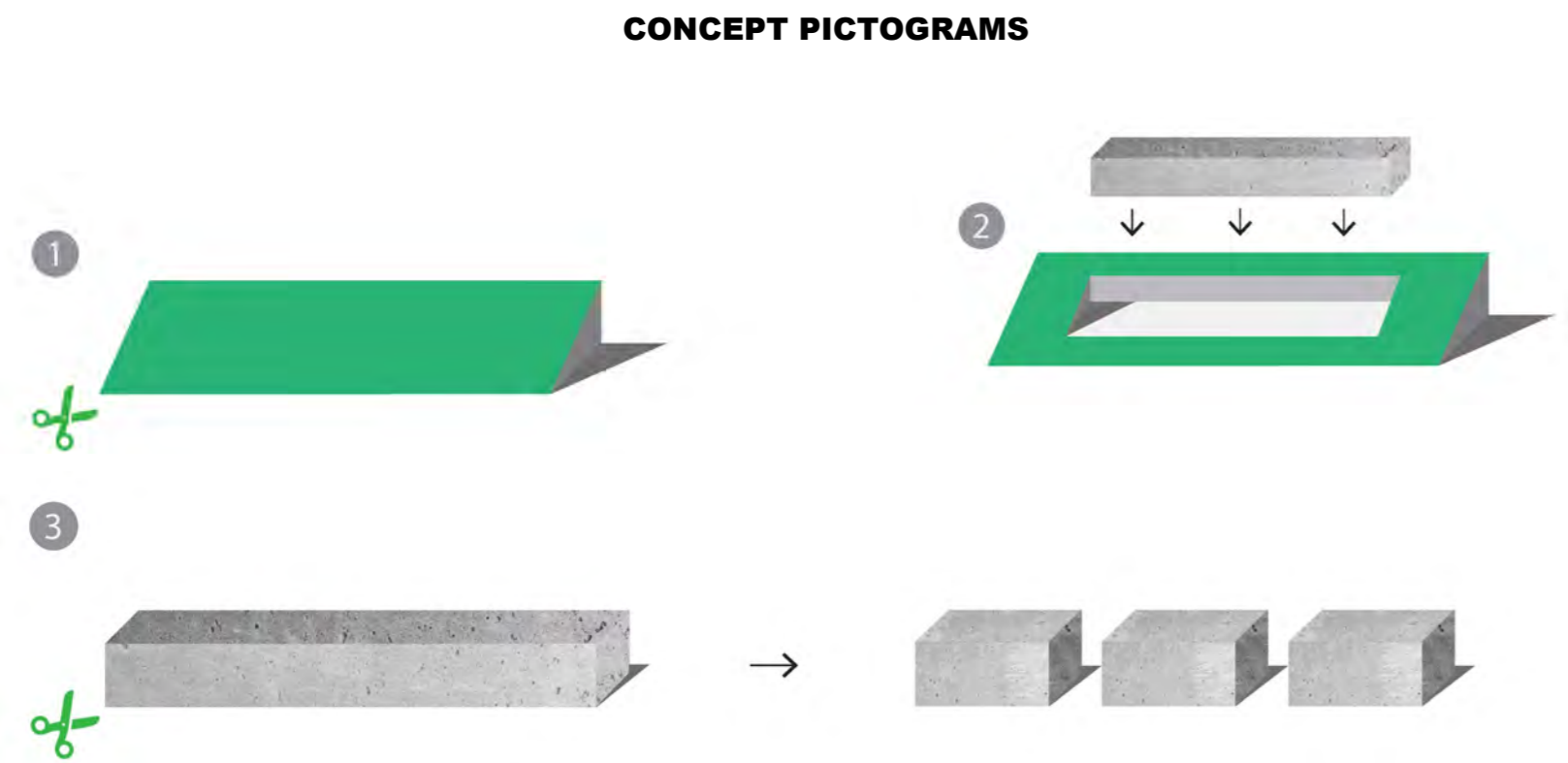
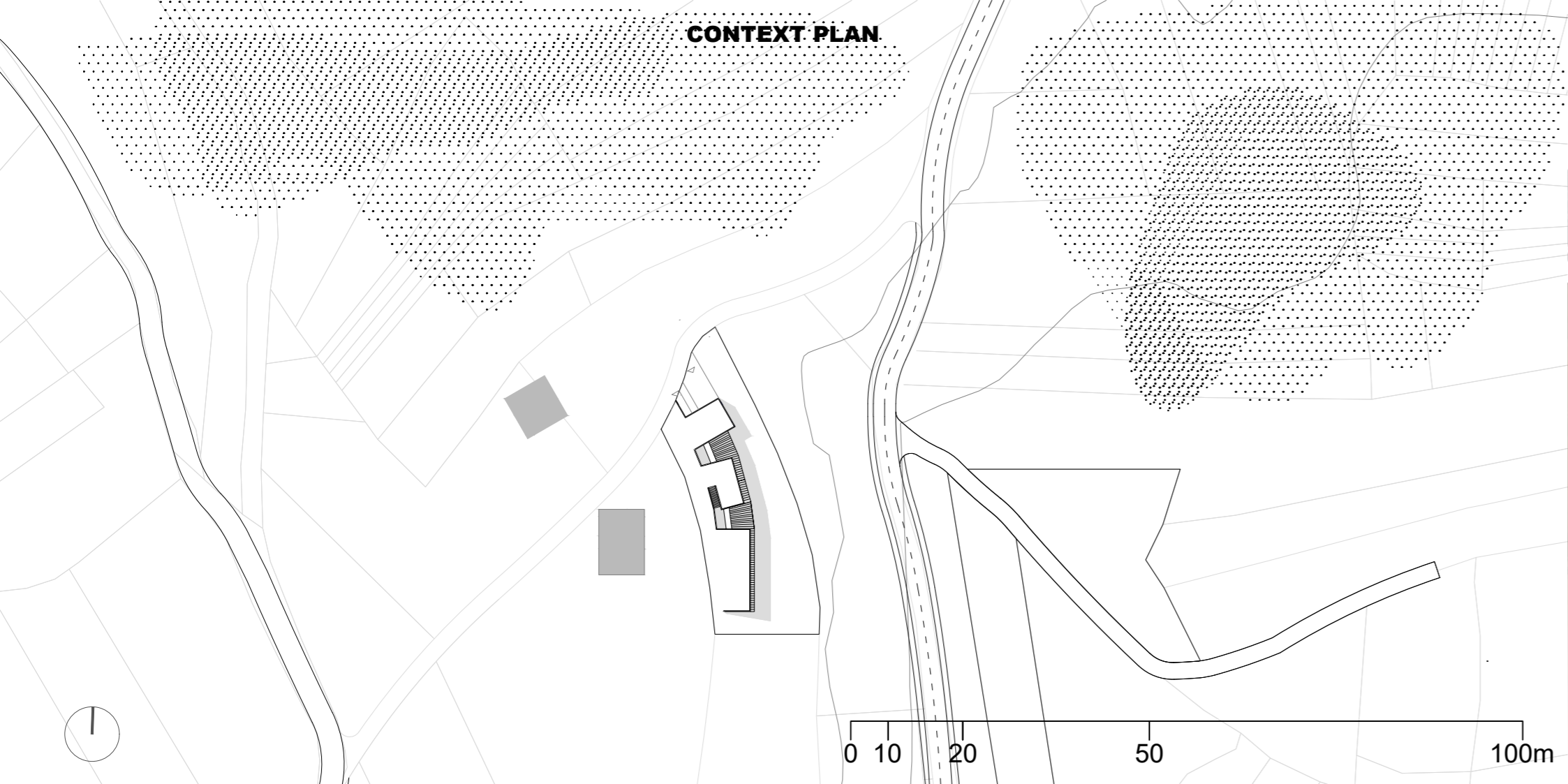
01



**A house is, first of all, a shelter, an artificial veil
between us and the vast beyond.
It is familiarity, it is sanctuary, it is a state of
belonging.**

**This house dreams of dissolving the boundary
between itself and the world, blending the natural
with the crafted.**

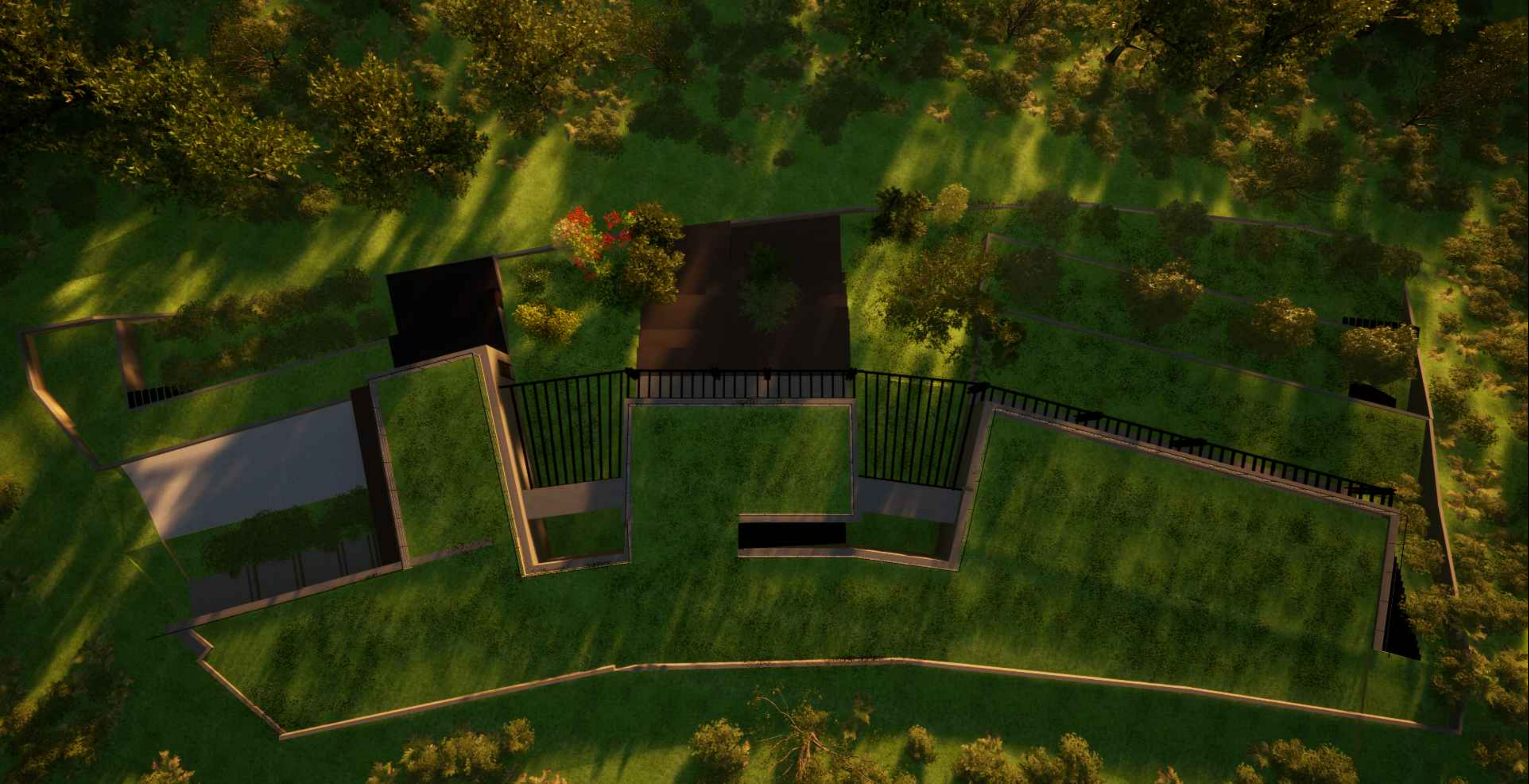
**It aims to vanish into the hill, yet hold an intimate
dialogue with the surrounding nature.
To remain unseen, yet to see everything.**



PLAN



0 100 200 500 1000cm

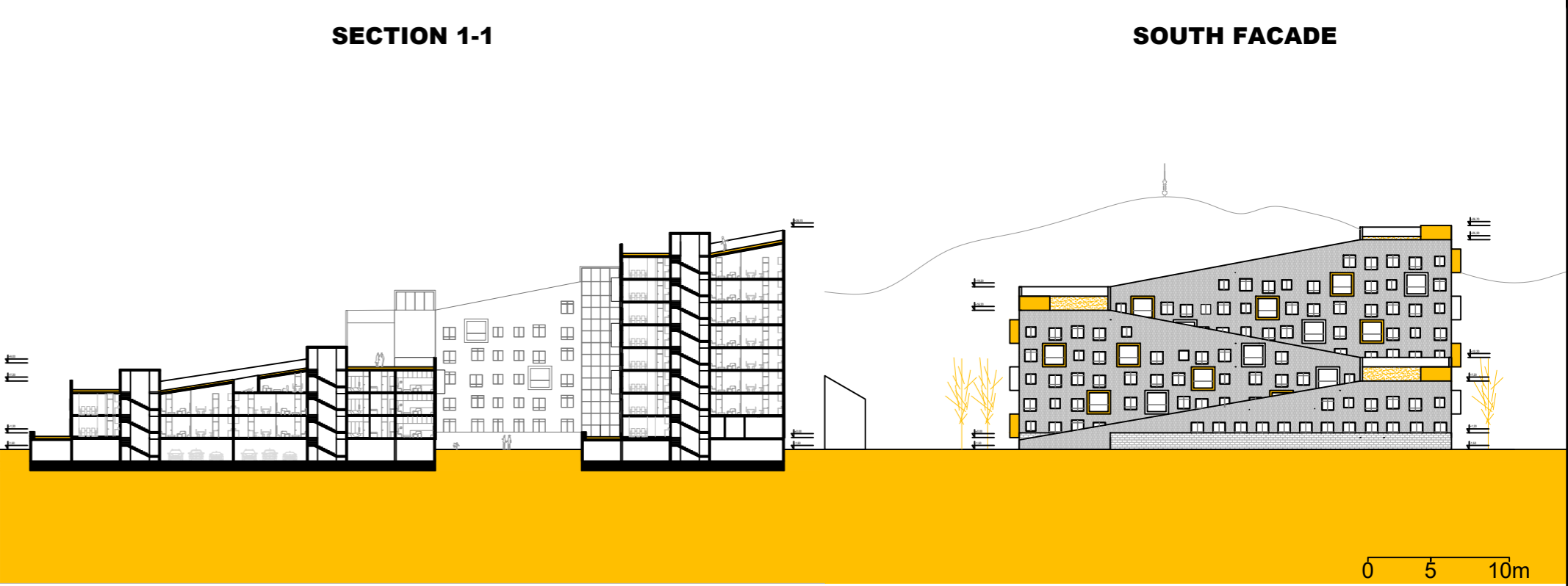
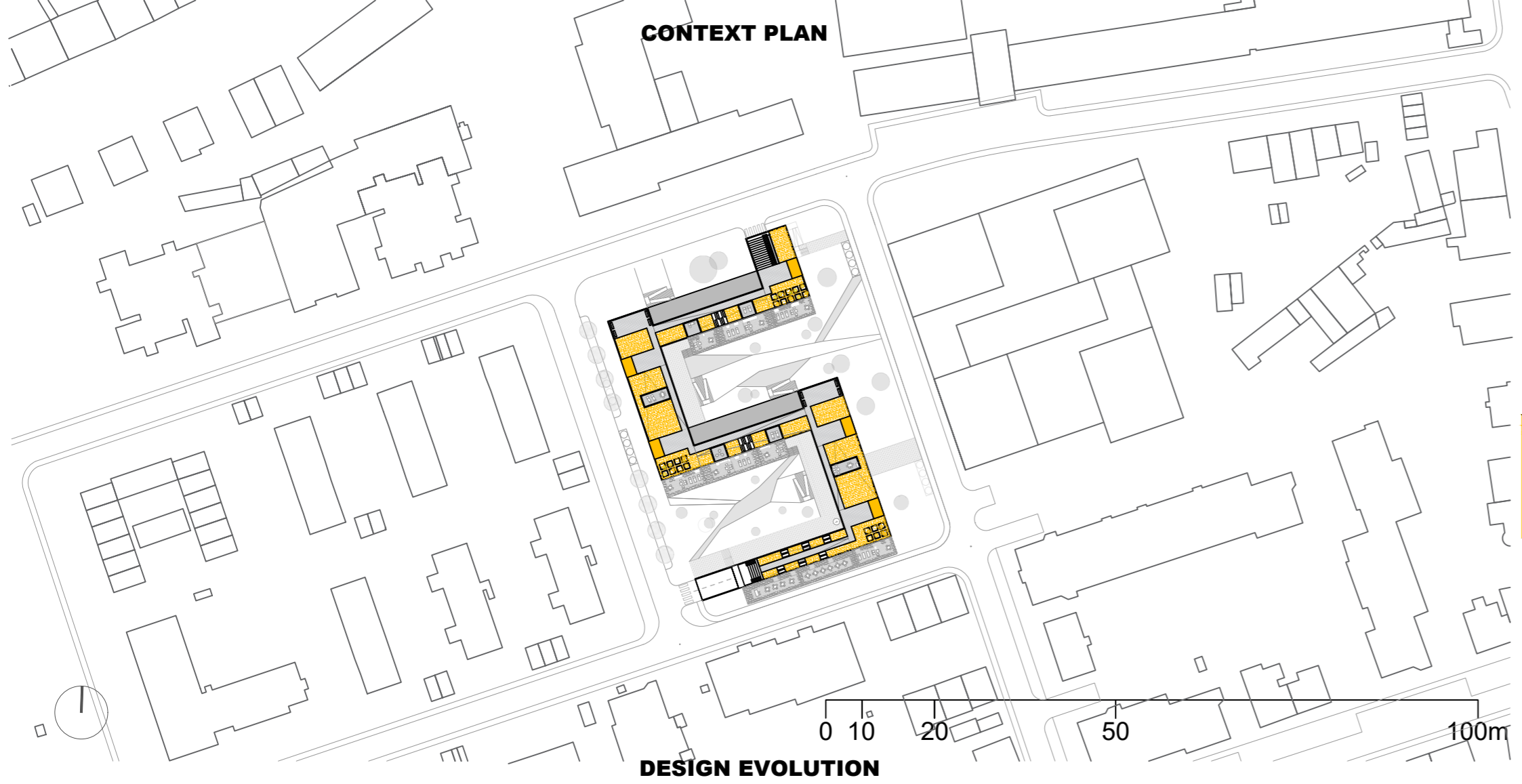


02



Zagreb is a city spatially defined by two natural elements: the meanders of the Sava River and the peaks of Mount Sljeme. Throughout history, these two features represented natural barriers to the city's expansion, but today they are cherished landscapes that offer opportunities for recreation and enjoying the outdoors.

This project seeks to echo these two defining characteristics of the city. The fluid, sculpted form of the block mirrors the meandering Sava River, while its active rooftop provides residents of the wider neighborhood with a green space for recreation and scenic views, much like Sljeme.

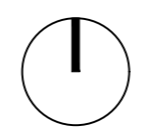
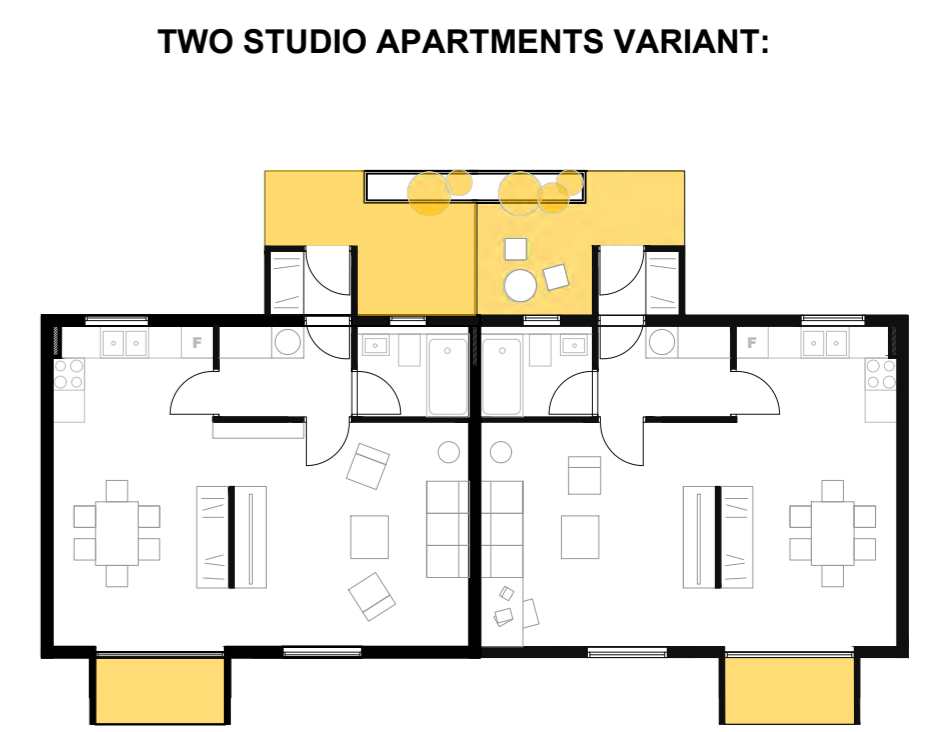
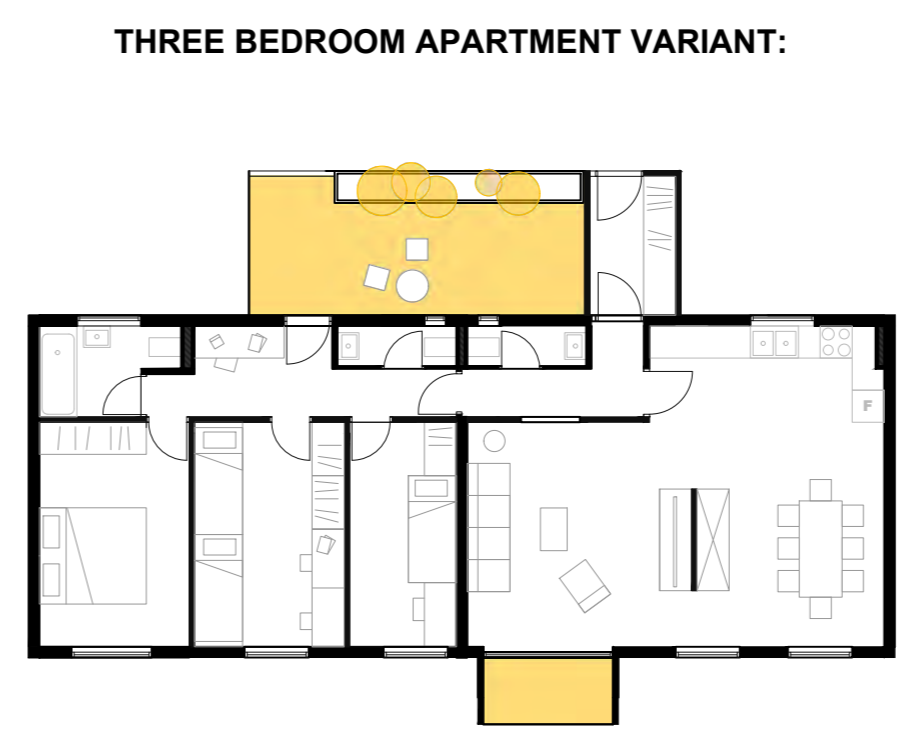


STARTING POINT
City block

STEP ONE
Adapting to the surrounding pedestrian areas

STEP TWO
Responding to the heights of the surrounding buildings

STEP THREE
Designing vibrant open spaces for all seasons.



0 200 500 1000cm

GROUND FLOOR

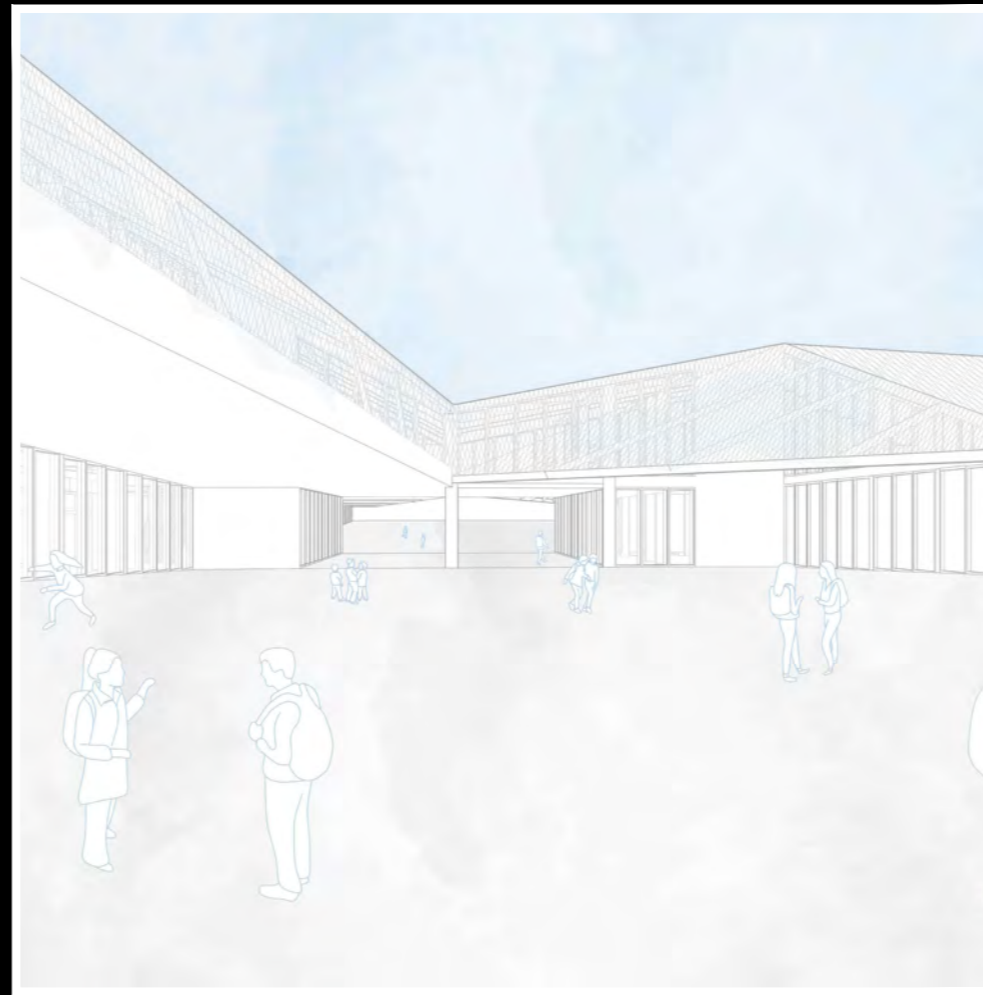
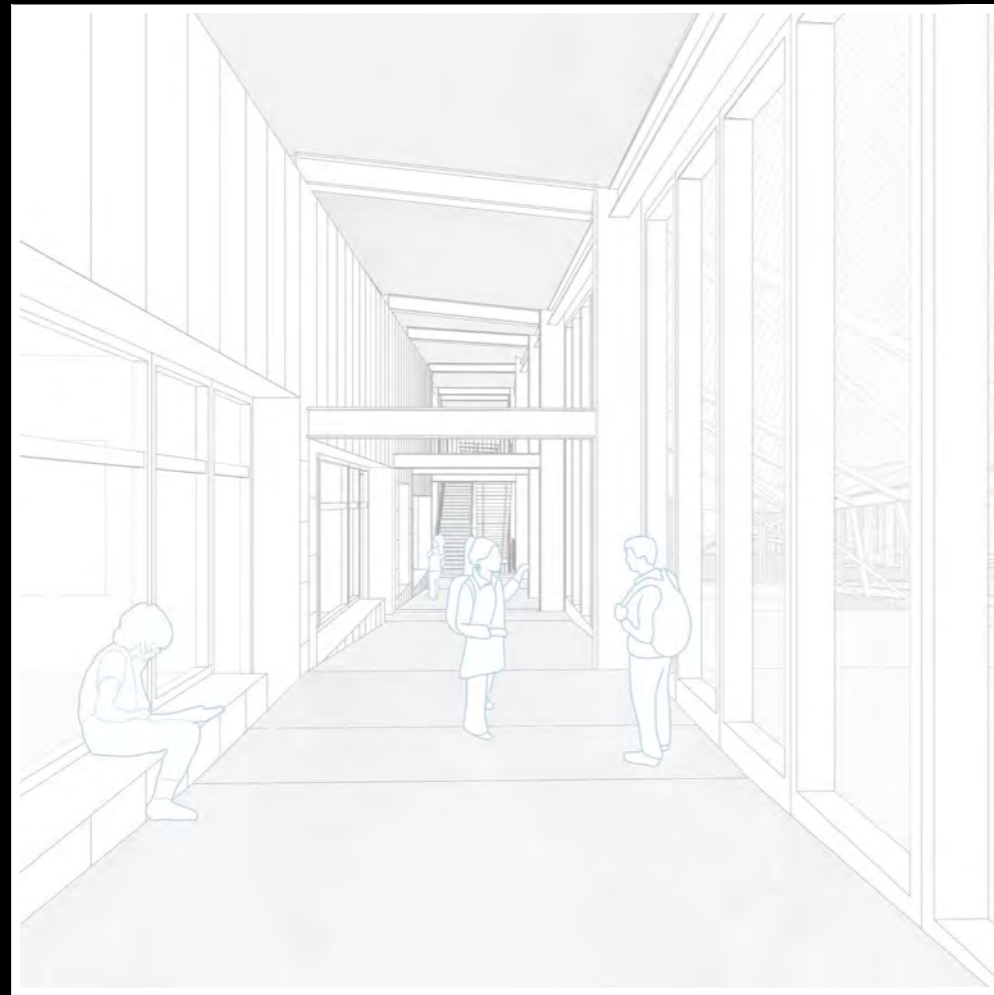


FIRST FLOOR





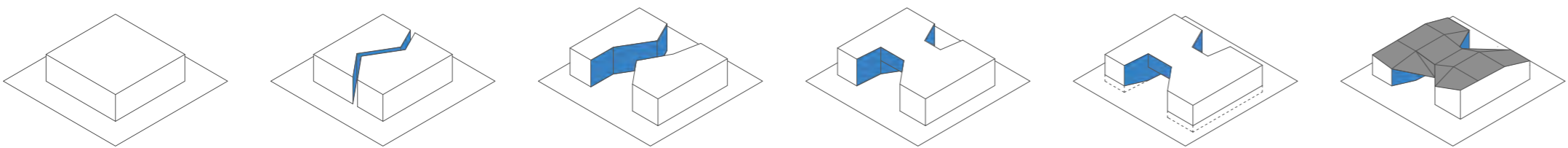
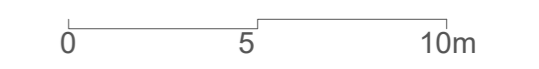
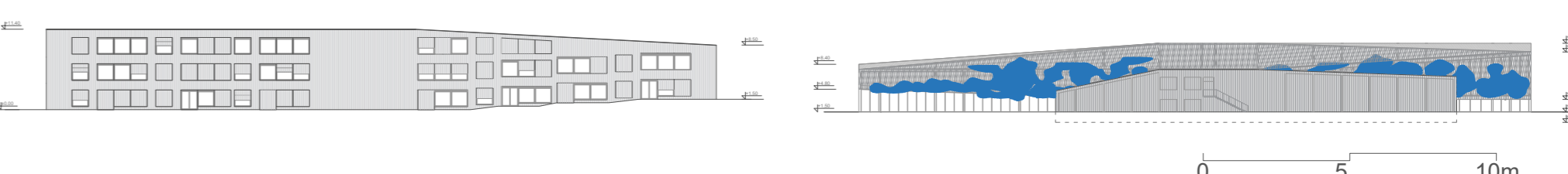
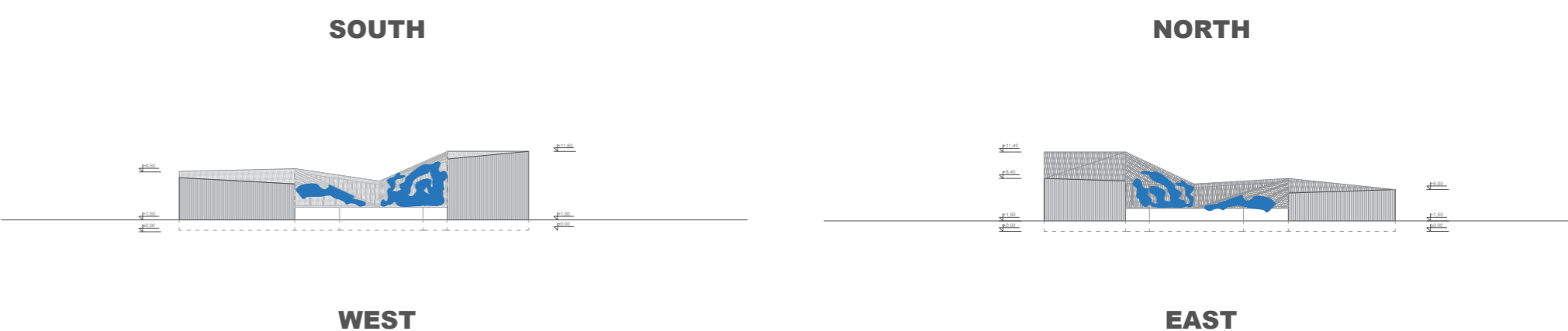
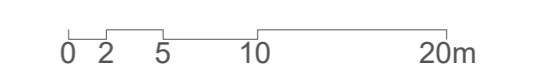
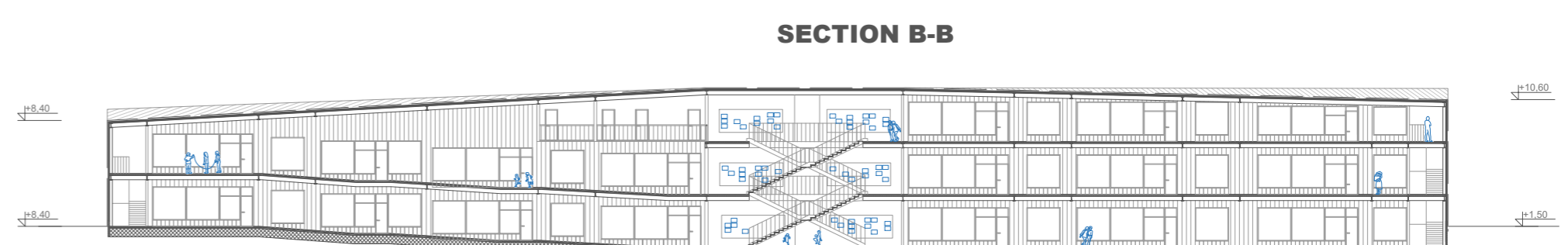
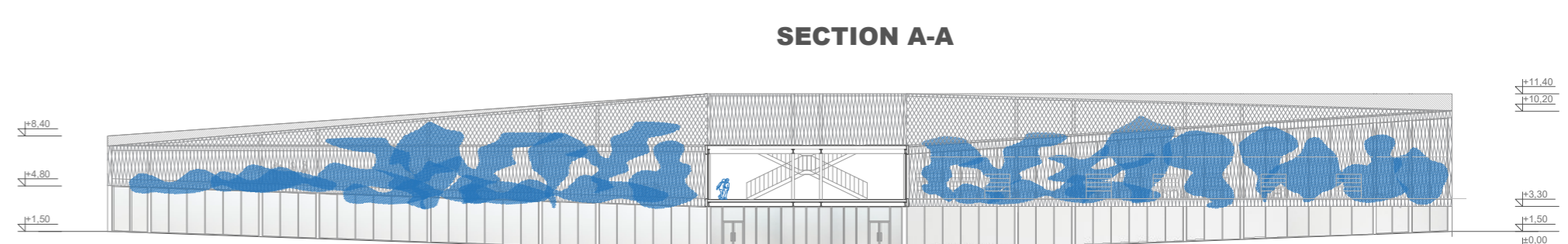
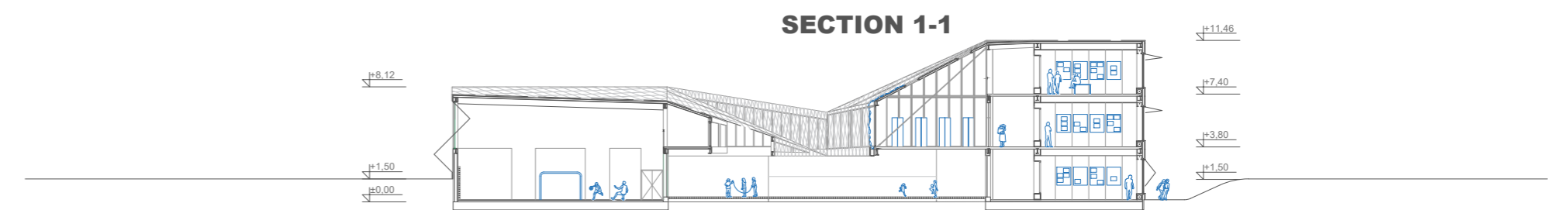
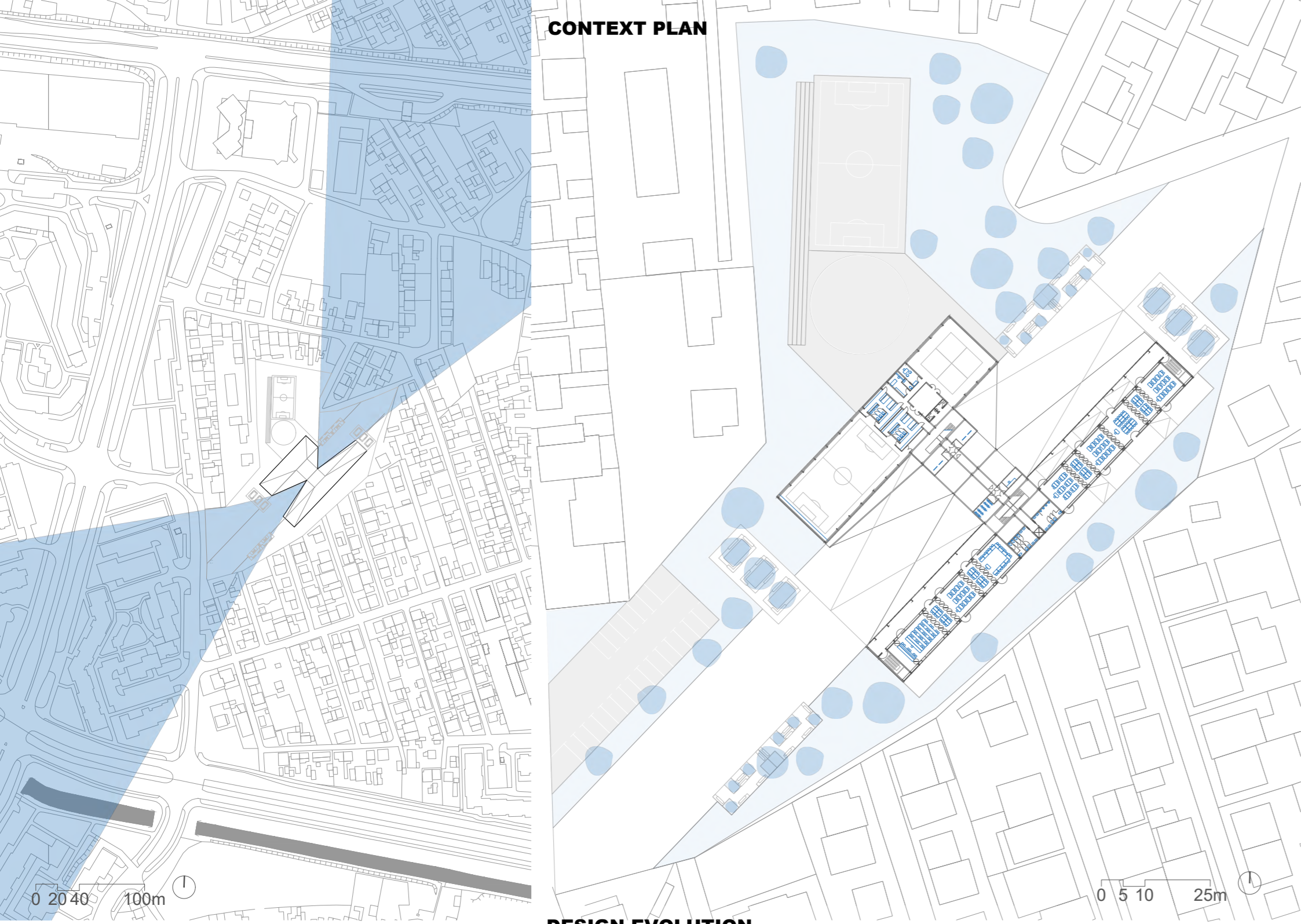
03



Staglišće is a densely packed neighborhood, characterized by small, unorganized lots and two-story family homes. Amidst this chaotic environment lies a large, vacant lot stretching north to south—untouched by the neighborhood's uncontrolled urbanization and designated as the future site of an elementary school.

This project sees the empty space as an opportunity not only to provide a school but also to compensate for the lack of open space and urban amenities the neighborhood desperately needs.

To achieve this, a wide pedestrian street bisects the school building, creating a dynamic public space. While the school is otherwise closed off and introverted, this central slice opens the building up entirely to the created urban space, offering passersby a glimpse into the activities within. This connection transforms the school into a civic anchor, giving Staglišće a sense of identity and character it previously lacked.



STARTING POINT
Closed box

STEP ONE
Slicing the volume of the building in half

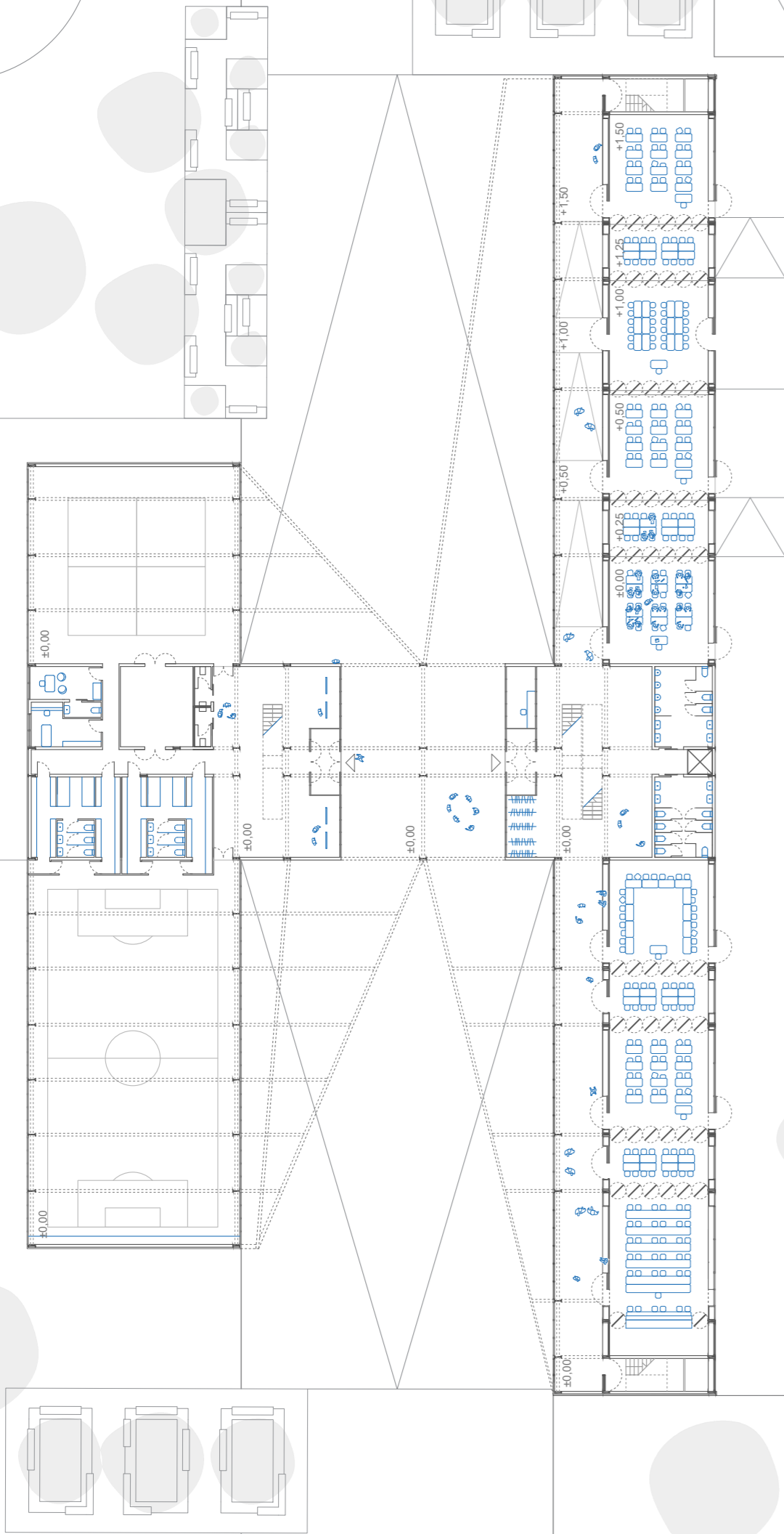
STEP TWO
Distancing the two parts to create tense but well defined space

STEP THREE
Creating a bridge with multifunctional school area above the school square

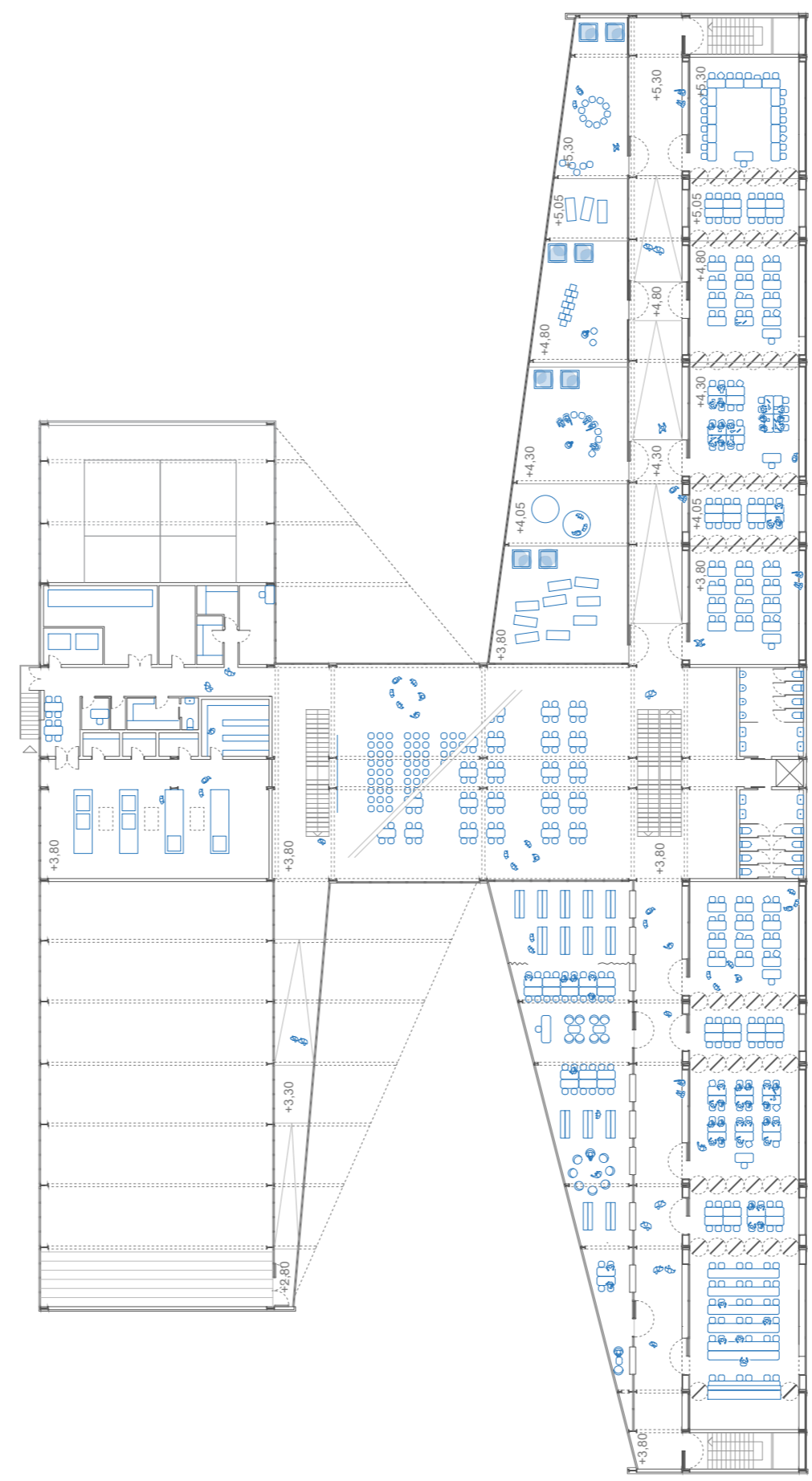
STEP FOUR
Sinking the ground floor half the height into the ground, forming a long ramp to the entrance

STEP FIVE
Designing a complex roof to emphasize the strong presence of the ramp leading to the building's core.

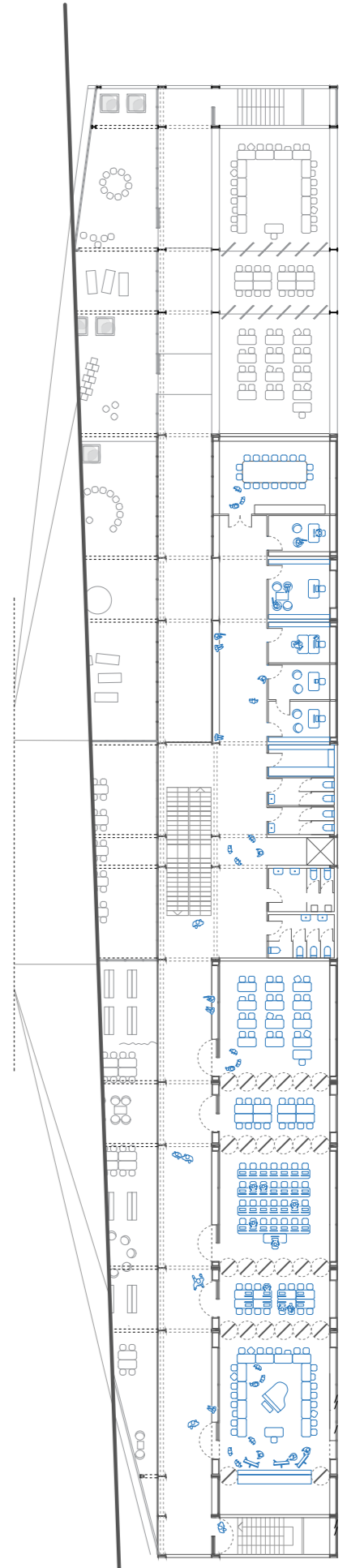
GROUND FLOOR

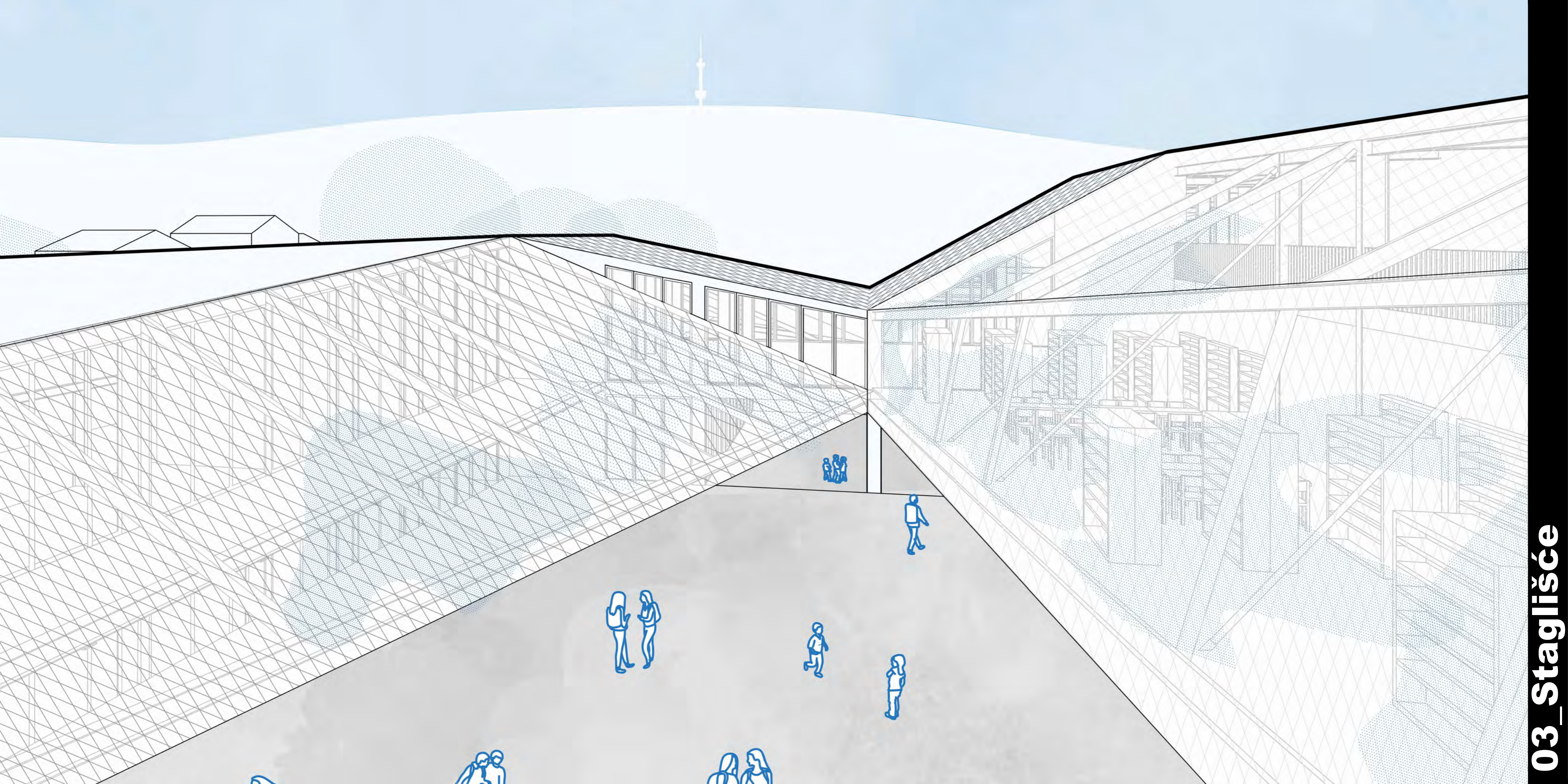


FIRST FLOOR

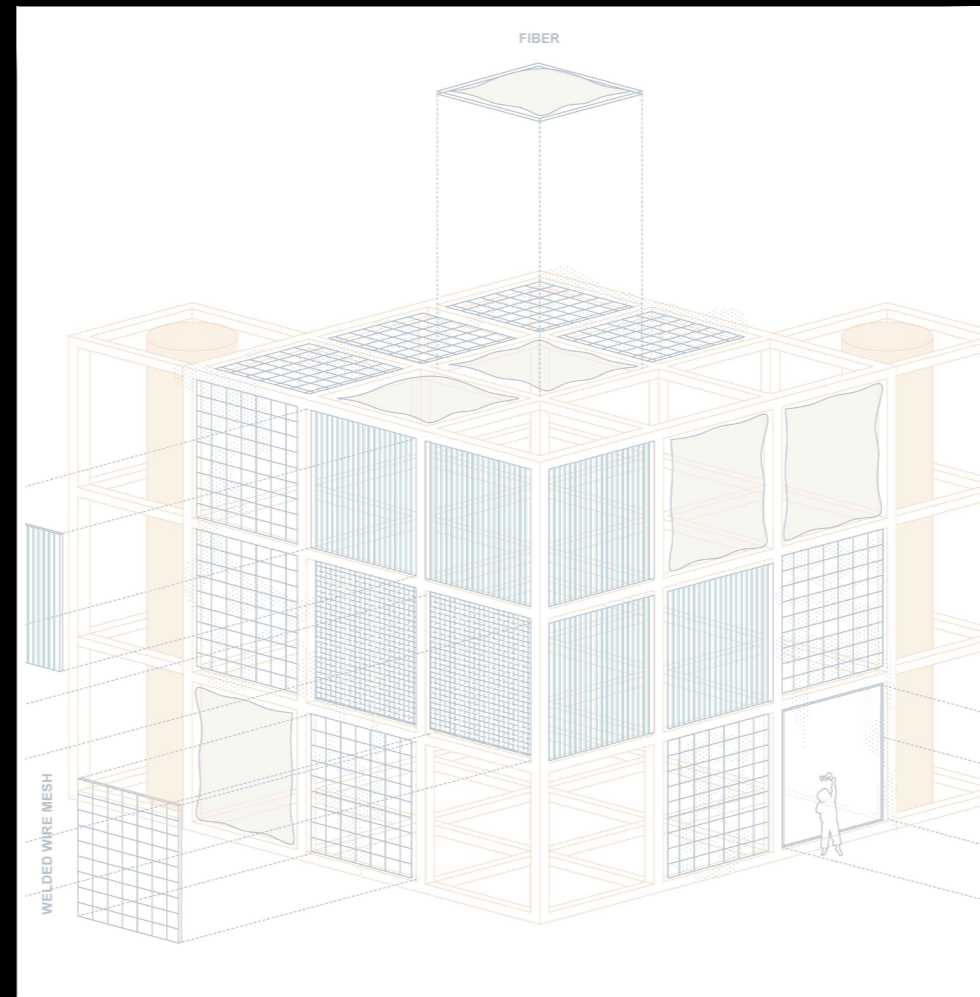


SECOND FLOOR





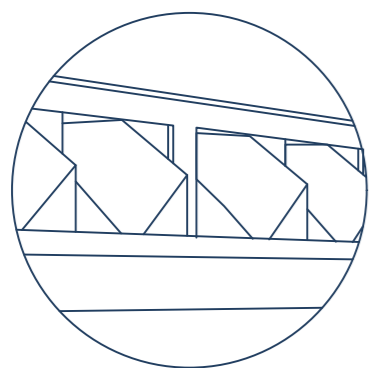
06



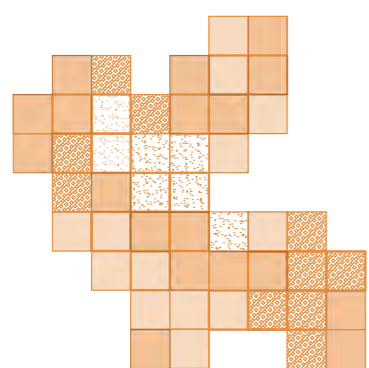
The starting point of this project was identifying a series of critical points in the city that we considered problematic. These were mostly related to outdated urban infrastructure elements, and the selected locations were treated as areas in need of temporary and swift intervention. We chose three locations in the city as experimental sites for our project: the dilapidated bus terminal (whose potential relocation is expected in the near future), the abandoned TEŽ complex (a former industrial site, now a neglected fossil near the city center), and the intersection of Branimirova and Držićeva streets (a complex multi-level urban hub where various types of movement awkwardly intersect). These are weak points of the city, and addressing them would be a massive financial and logistical undertaking, so their resolution cannot be expected quickly. Due to the large number of such places in the city, we propose a temporary intervention in the urban space, which, in direct dialogue with the decaying infrastructure present at the locations, would attempt to compensate for its shortcomings and mask them until they are properly addressed, creating an attractive counterpoint – their complement.



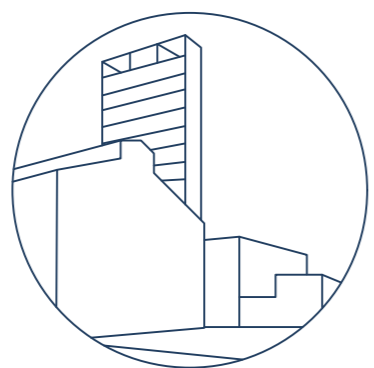
**LOCATION ONE:
BUS TERMINAL**



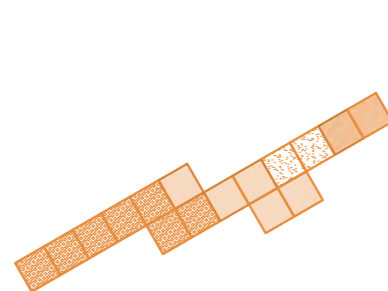
A deteriorating transportation hub



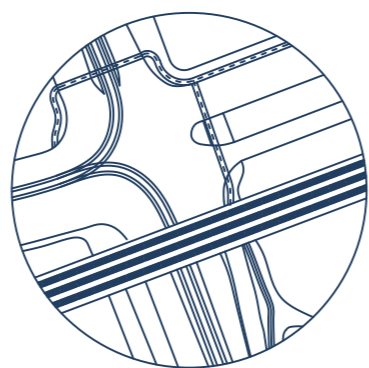
**LOCATION TWO:
TEŽ IND. COMPLEX**



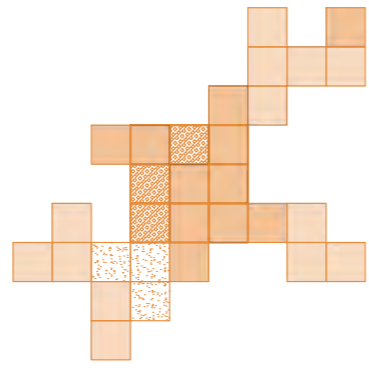
Former industrial complex



**LOCATION THREE:
DRŽIČEVA-BRANIMIROVA
INTERSECTION**



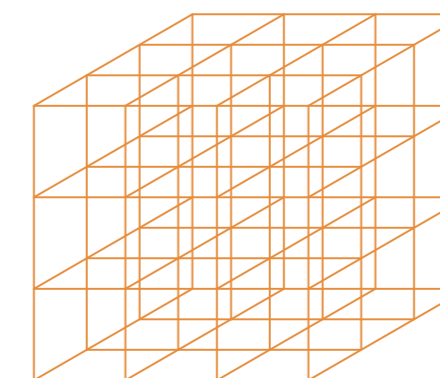
Turbulent unfinished intersection



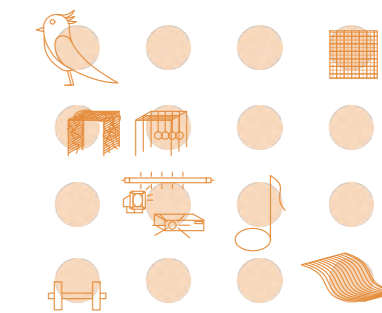
PROJECT STAGES



IDENTIFYING
CHALLENGES OF
THE LOCATION

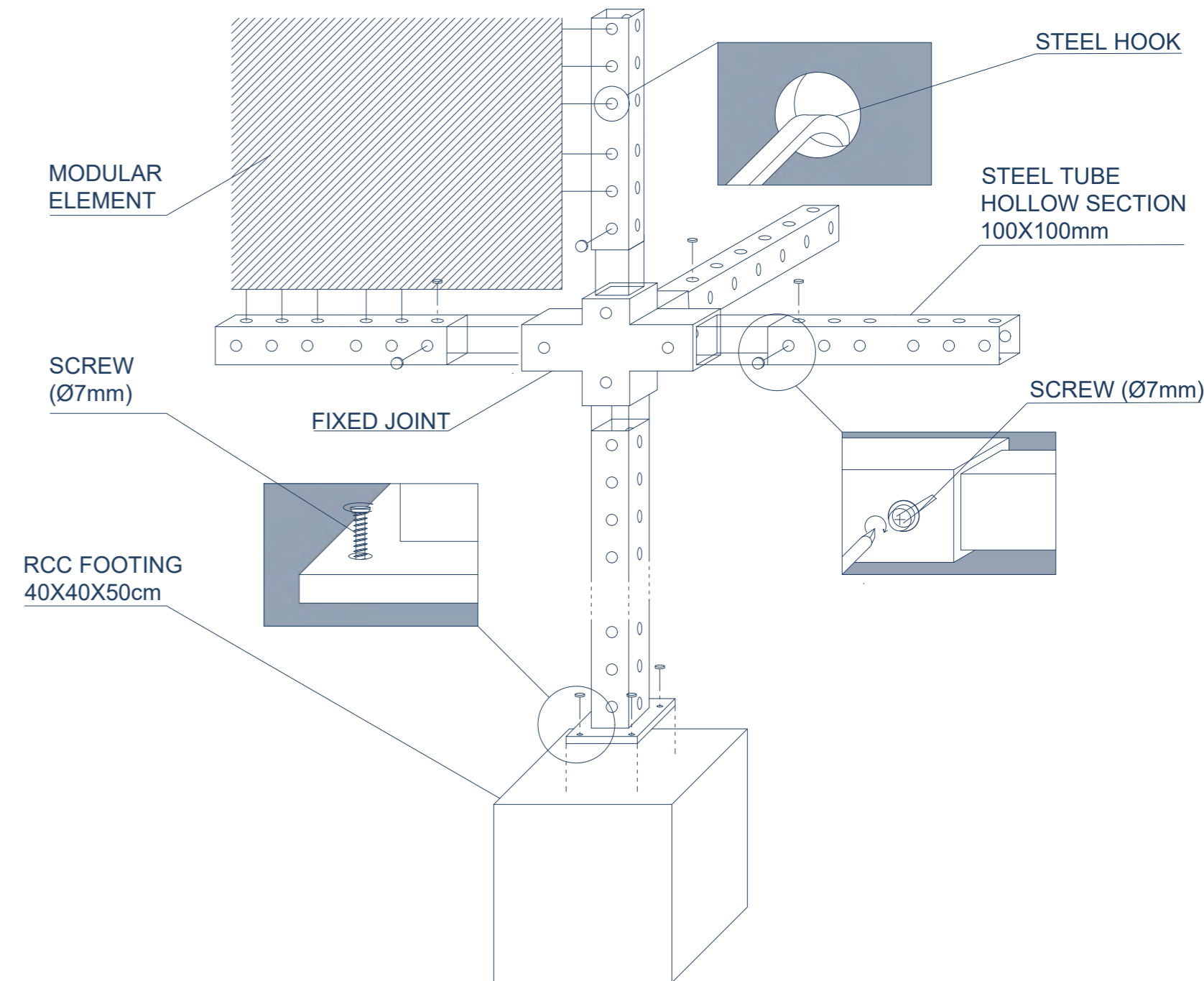


SETTING UP 2D AND
3D **GRID**

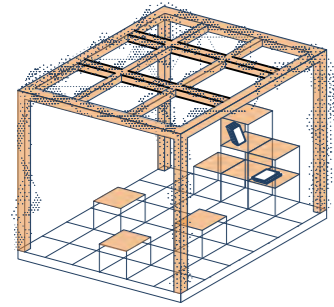


INSTALLING
MODULAR
ELEMENTS

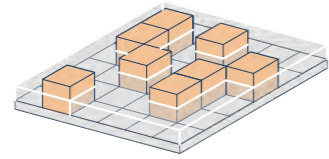
FRAME ASSEMBLY MANUAL



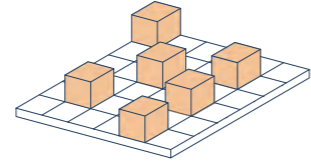
MODULE CATALOGUE



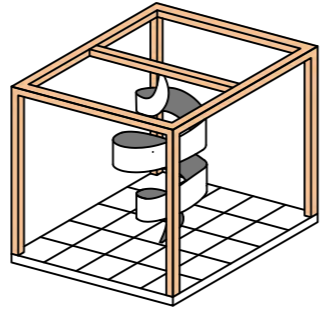
OPEN-AIR LIBRARY



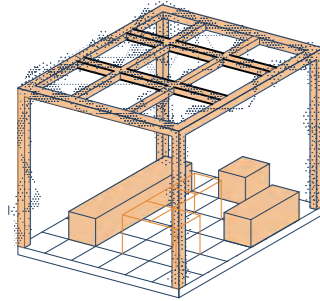
FOUNTAIN



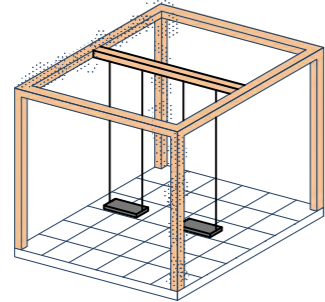
JUMPING STONES



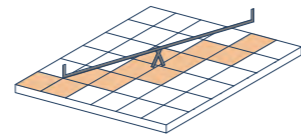
MERRY-GO-ROUND



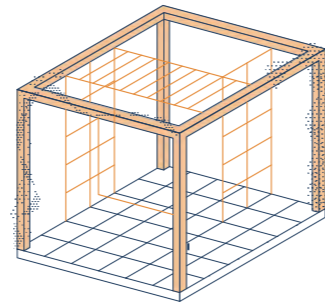
REST AREA



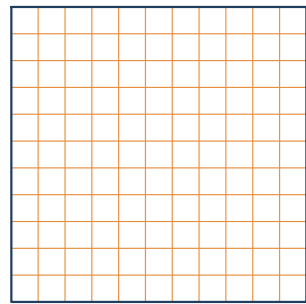
SWING



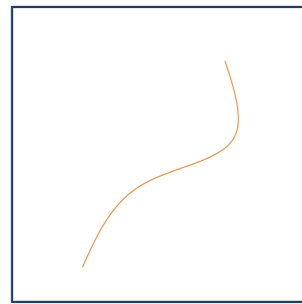
SEE-SAW



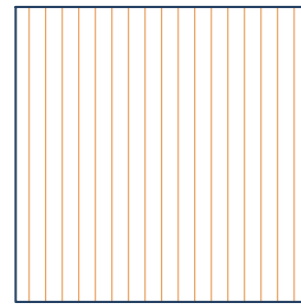
JUNGLE GYM



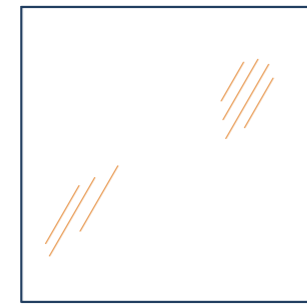
WELDED WIRE MESH



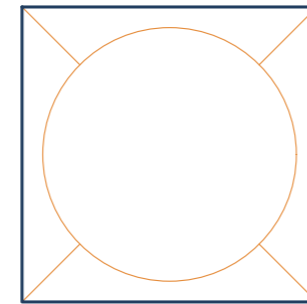
FIBER



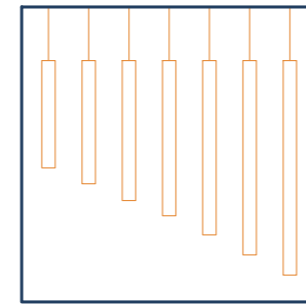
POLYCARBONATE



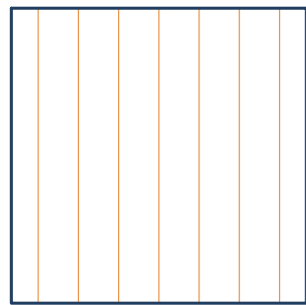
ACRYLIC GLASS



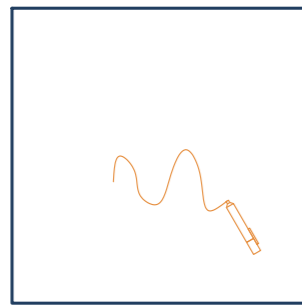
DRUM



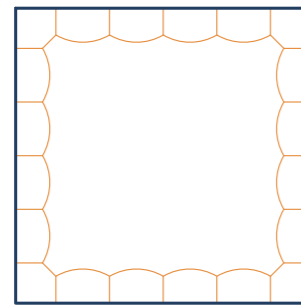
WIND DRUM



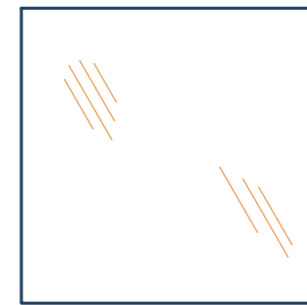
WIRES



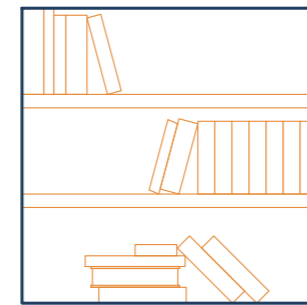
DRAWING BOARD



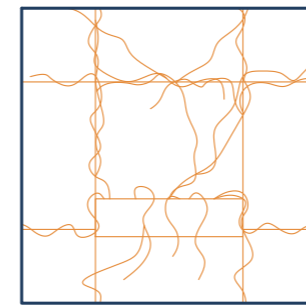
TRAMPOLINE



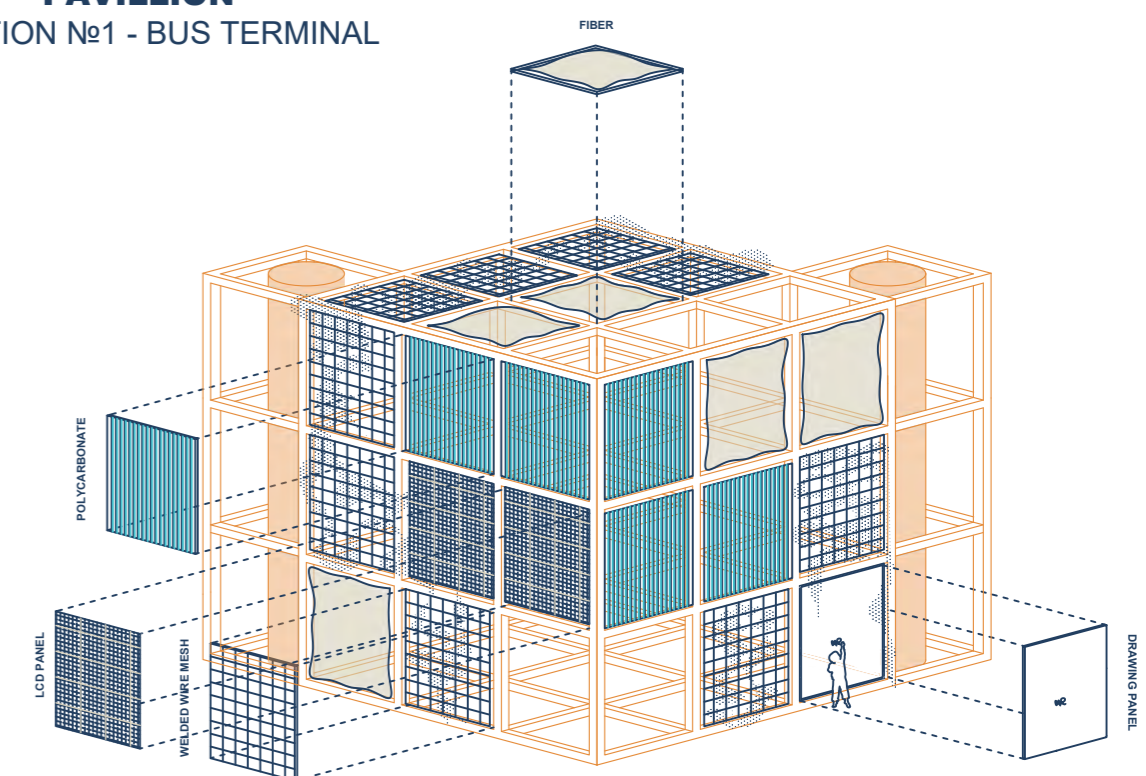
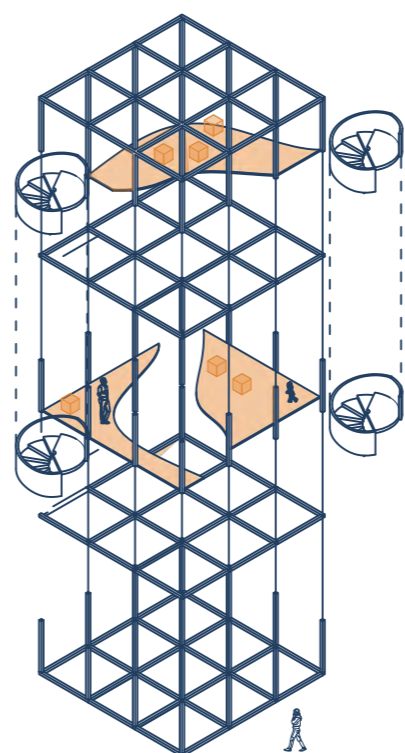
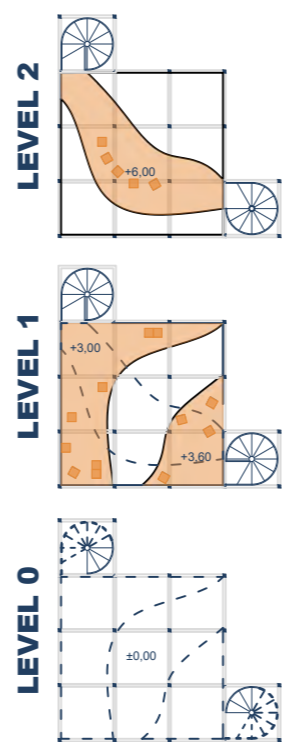
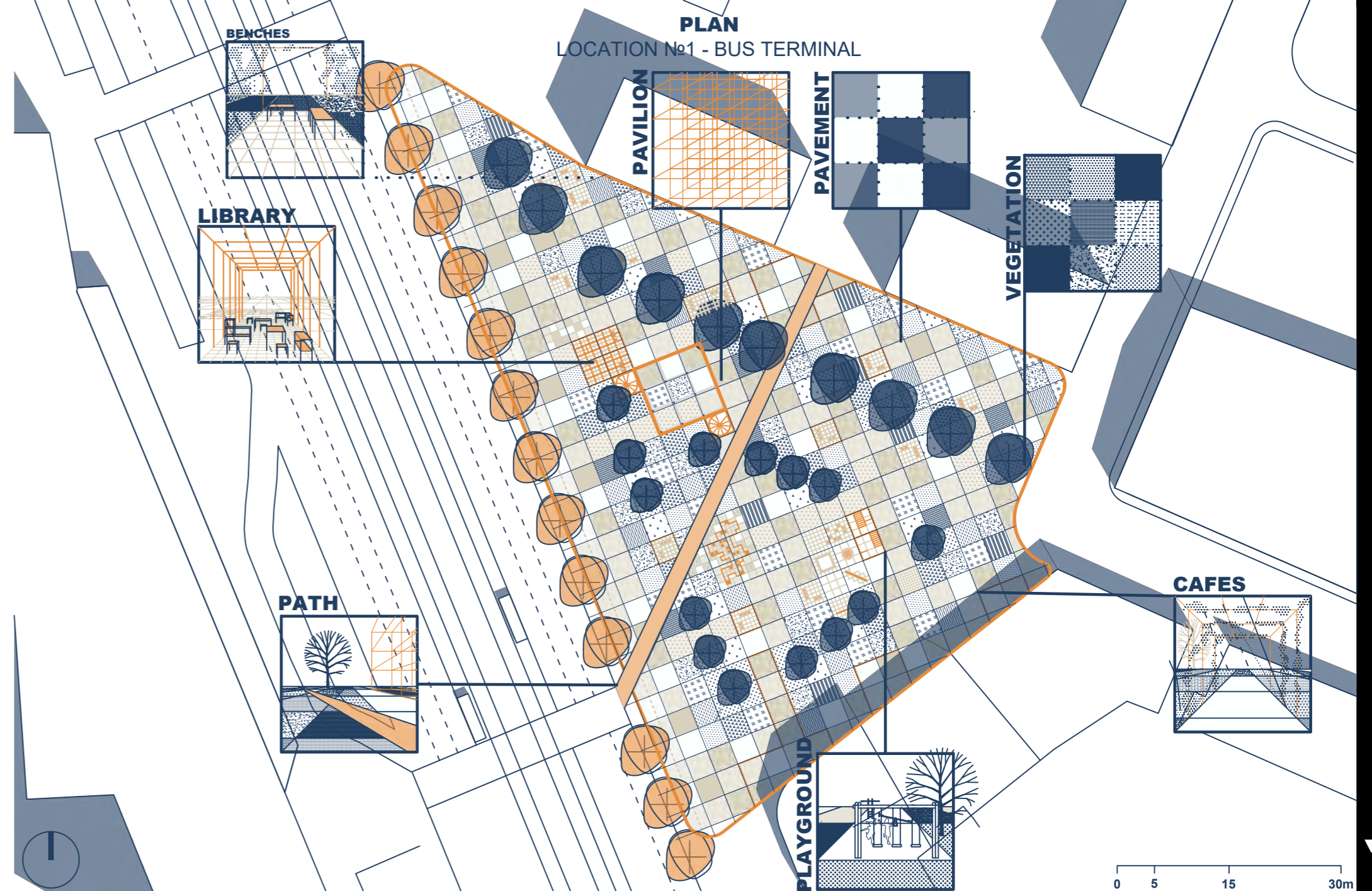
MIRROR



BOOKSHELVES

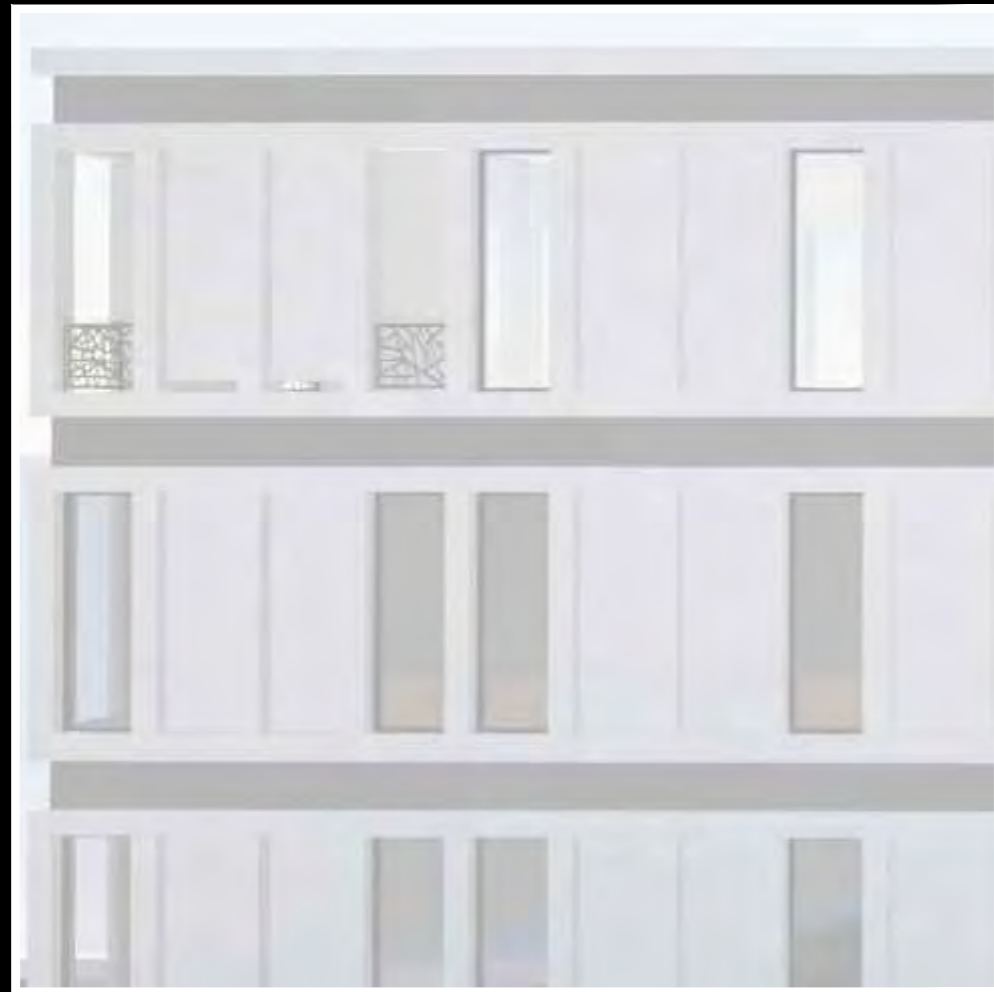


VERTICAL GARDEN





09



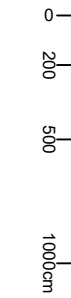
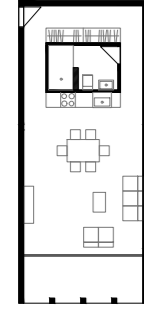
The design of this residential cluster draws inspiration from the rich urban history of Split, dating back to the 4th century with the arrival of Emperor Diocletian to the peninsula.

The project has a single overarching goal: to embrace the warm Mediterranean climate while introducing a way of living that prioritizes outdoor spaces, all while achieving the high density expected of a 21st-century city. It rejects the standardized, sterile hallway design typical of most modern and postmodern residential projects. Instead, it fosters a more humanized shared exterior space reminiscent of the entrance courtyards found in the old townhouses of Split's historic center.

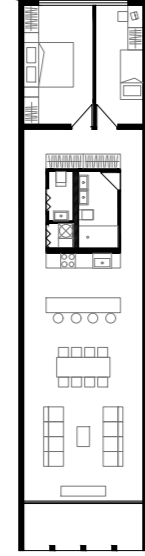
APARTMENT CATALOGUE



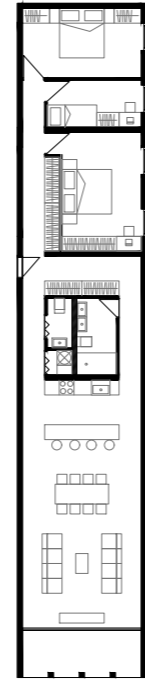
2M



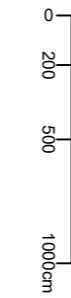
4M



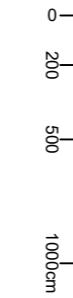
5M



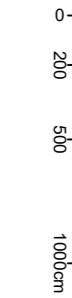
3M



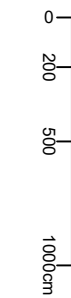
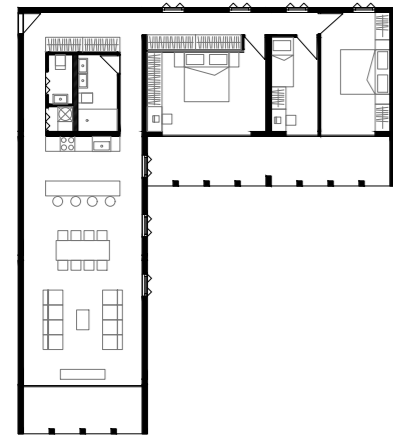
4M



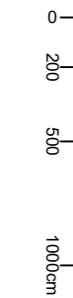
5M



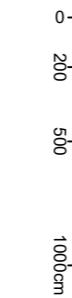
5M



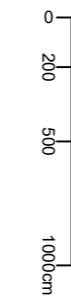
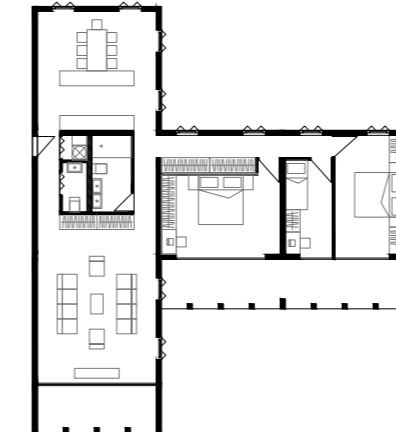
5M



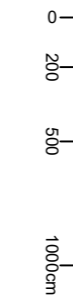
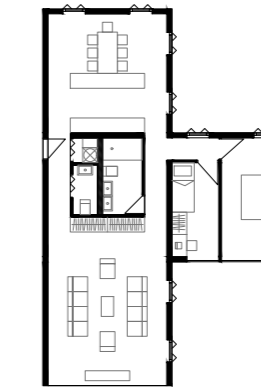
4M



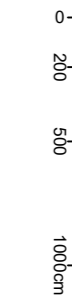
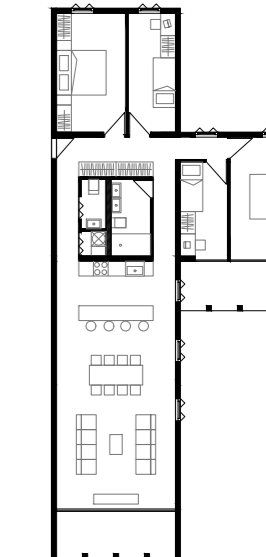
5M



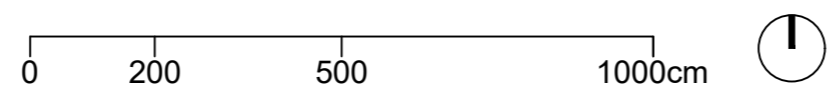
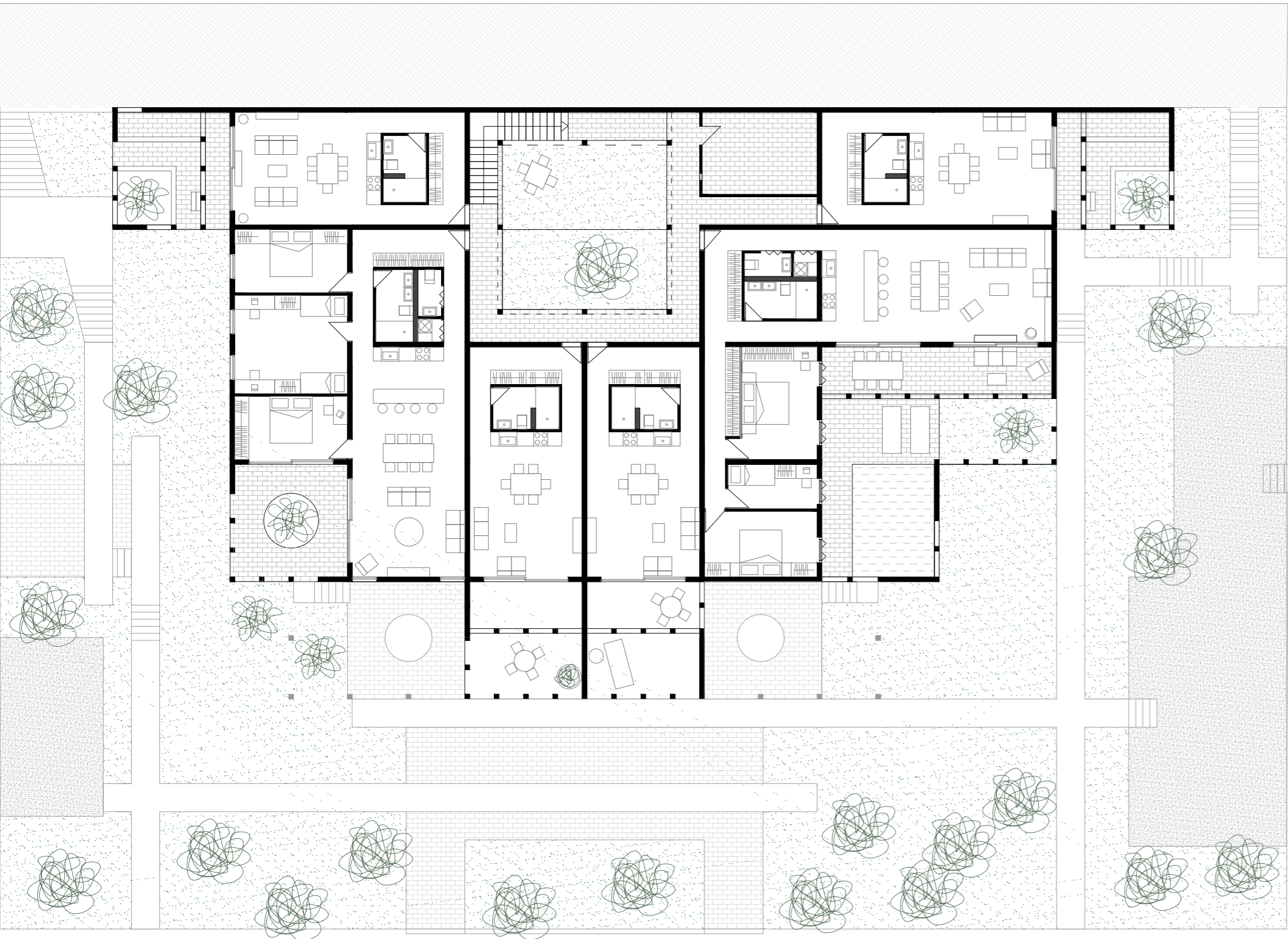
3M



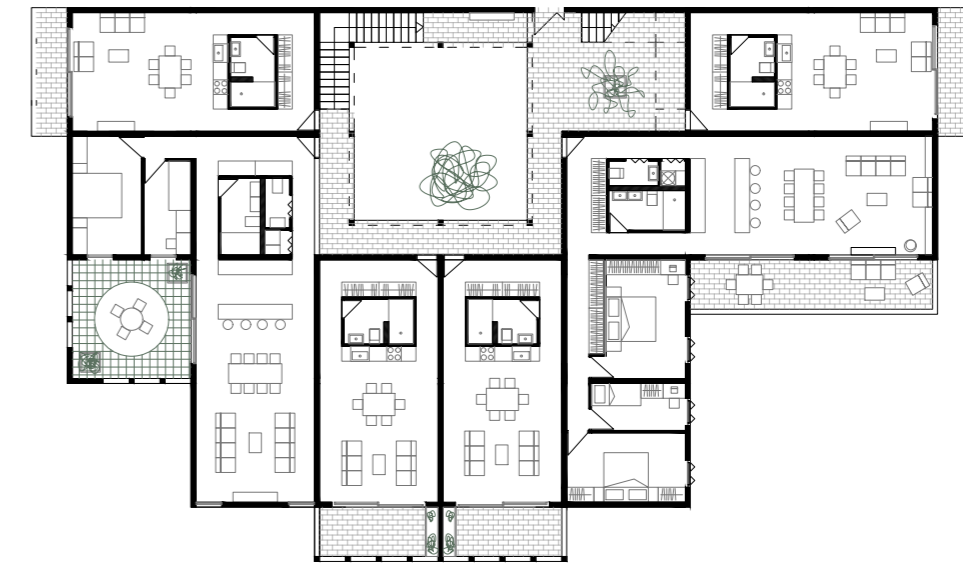
5M



GROUND FLOOR



FIRST FLOOR



SECOND FLOOR



THIRD FLOOR

