

PENTA WEAR INC.  
2025

# Product Catalog

NEW PRODUCT YEAR 2025





# About Us.



## Introduction

Penta Wear Inc. is a trusted leader in custom clothing manufacturing, with operations in both the United States and Canada. We specialize in high-quality streetwear, sportswear, and uniforms, offering a full range of services including embroidery, screen printing, sublimation, and more. Whether you're looking for custom designs, premium fabrics, or tailored packaging, we're here to help bring your brand vision to life. With a commitment to excellence and a seamless production process, Penta Wear ensures every piece is crafted to meet your specific needs. Let's build something amazing together!

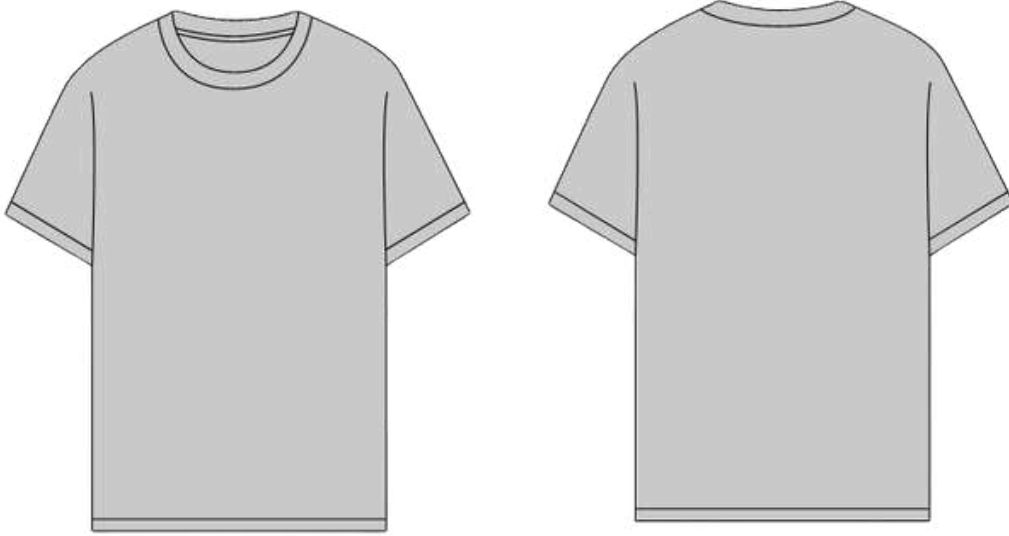


# **STREET WEAR**

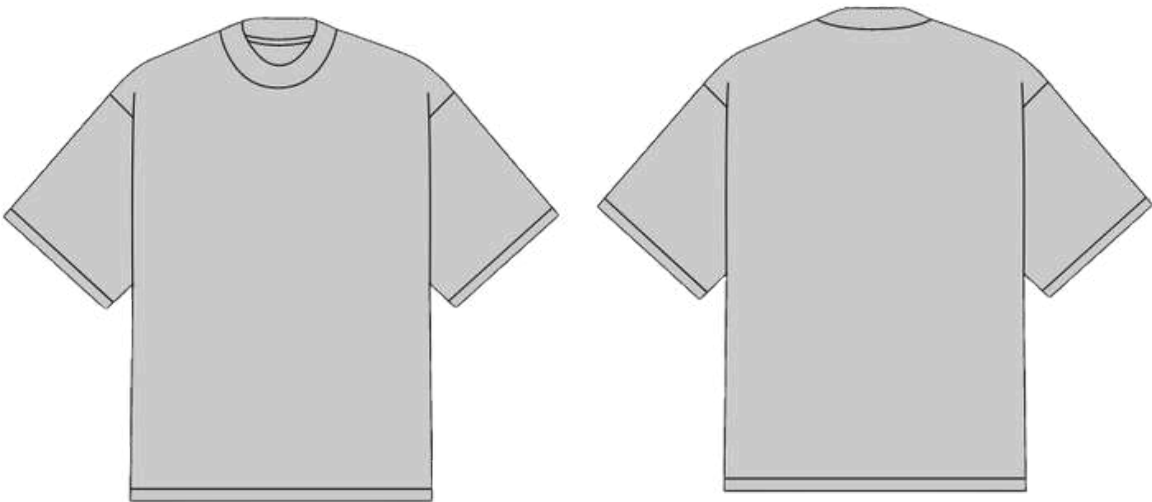


---

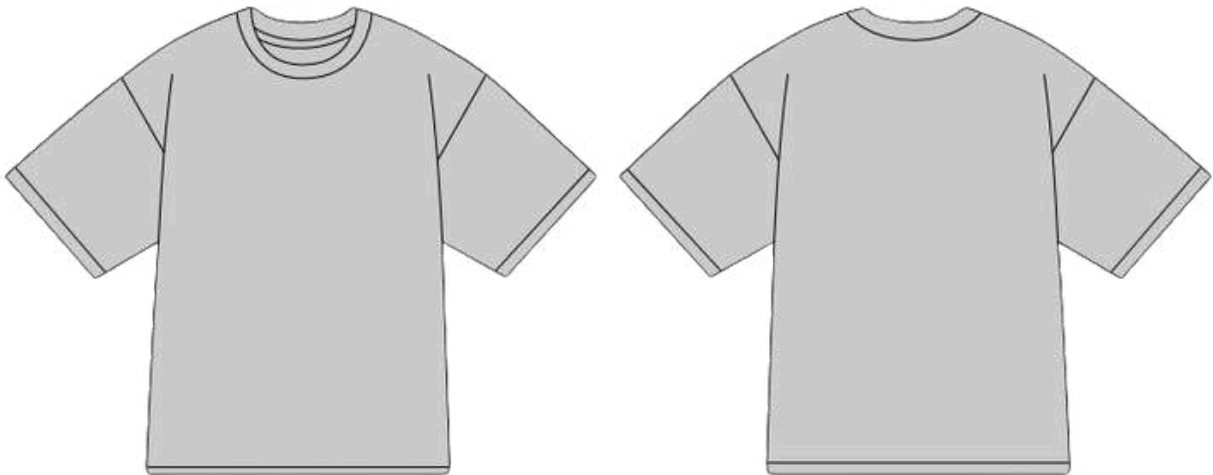
# T-SHIRTS



REGULAR T-SHIRTS



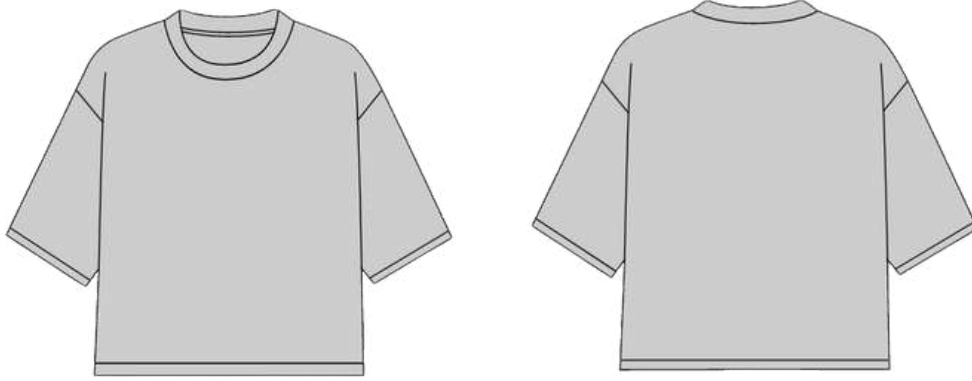
CREW NECK T-SHIRTS



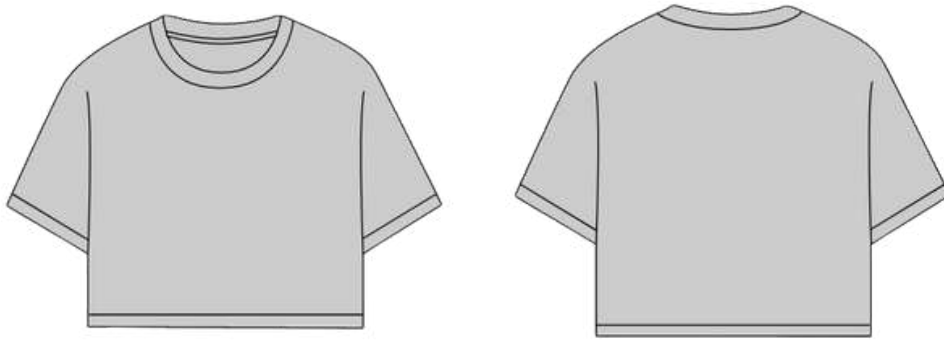
DROP SHOULDER T-SHIRTS

---

## DBOXY FIT T-SHIRTS



## CROPTOP T-SHIRTS



**\$18-25**

**ALL PRINTING OPTIONS ARE AVAILABLE**

ABOVE COST INCLUDES:

- PRODUCTION CHARGES
  - SHIPPING CHARGES
  - FREE CUSTOM HANGTAGS
  - FREE CUSTOM POLYMAILERS
  - FREE CUSTOM NECKLABELS
-



# FABRICS:

## DIFFERENT GSM RANGES ARE AVAILABLE

### 1. Cotton Variants:

- ✓ 100% Cotton – Soft, breathable, and comfortable (e.g., combed cotton, ringspun cotton).
- ✓ Organic Cotton – Eco-friendly, pesticide-free alternative to regular cotton.
- ✓ Pima Cotton – High-quality cotton with extra-long fibers for durability.
- ✓ Supima Cotton – Premium cotton with a soft feel and strong fibers.

### 2. Blended Fabrics:

- ✓ Cotton-Polyester Blend (50/50, 60/40, 80/20, etc.) – Combines cotton's softness with polyester's durability and wrinkle resistance.
- ✓ Tri-Blend (Cotton + Polyester + Rayon) – Super soft, lightweight, and slightly stretchy.
- ✓ Cotton-Spandex Blend – Adds stretch and flexibility, ideal for fitted T-shirts.

### 3. Synthetic Fabrics:

- ✓ Polyester – Lightweight, moisture-wicking, and durable, commonly used in sportswear.
- ✓ Nylon – Strong, smooth, and moisture-resistant, used for performance wear.
- ✓ Rayon (Viscose) – Soft, breathable, and silky, often blended with other fabrics.

### 4. Performance & Specialty Fabrics:

- ✓ Dri-FIT (Polyester Blend) – High-performance, moisture-wicking fabric used in athletic wear.
- ✓ Bamboo Fabric – Soft, antibacterial, and eco-friendly, often blended with cotton.
- ✓ Modal – Silky smooth, wrinkle-resistant, and breathable.

# FULL SLEEVE SHIRTS

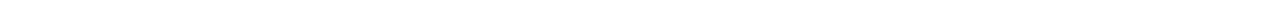


**\$19-26**

**ALL PRINTING OPTIONS ARE AVAILABLE**

ABOVE COST INCLUDES:

- PRODUCTION CHARGES
- SHIPPING CHARGES
- FREE CUSTOM HANGTAGS
- FREE CUSTOM POLYMAILERS
- FREE CUSTOM NECKLABELS





# FABRICS:

## DIFFERENT GSM RANGES ARE AVAILABLE

### 1. Cotton Variants:

- ✓ 100% Cotton – Soft, breathable, and comfortable (e.g., combed cotton, ringspun cotton).
- ✓ Organic Cotton – Eco-friendly, pesticide-free alternative to regular cotton.
- ✓ Pima Cotton – High-quality cotton with extra-long fibers for durability.
- ✓ Supima Cotton – Premium cotton with a soft feel and strong fibers.

### 2. Blended Fabrics:

- ✓ Cotton-Polyester Blend (50/50, 60/40, 80/20, etc.) – Combines cotton's softness with polyester's durability and wrinkle resistance.
- ✓ Tri-Blend (Cotton + Polyester + Rayon) – Super soft, lightweight, and slightly stretchy.
- ✓ Cotton-Spandex Blend – Adds stretch and flexibility, ideal for fitted T-shirts.

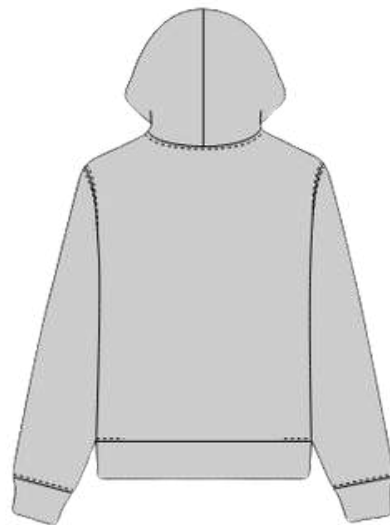
### 3. Synthetic Fabrics:

- ✓ Polyester – Lightweight, moisture-wicking, and durable, commonly used in sportswear.
- ✓ Nylon – Strong, smooth, and moisture-resistant, used for performance wear.
- ✓ Rayon (Viscose) – Soft, breathable, and silky, often blended with other fabrics.

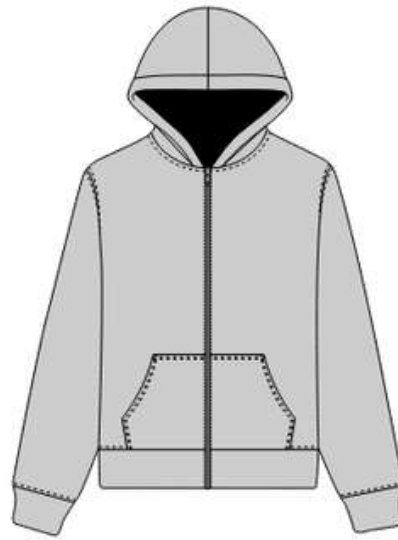
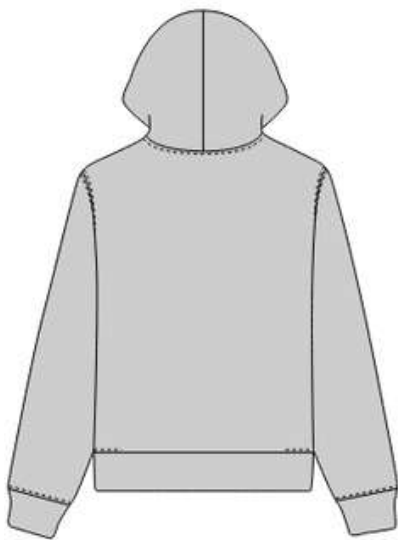
### 4. Performance & Specialty Fabrics:

- ✓ Dri-FIT (Polyester Blend) – High-performance, moisture-wicking fabric used in athletic wear.
- ✓ Bamboo Fabric – Soft, antibacterial, and eco-friendly, often blended with cotton.
- ✓ Modal – Silky smooth, wrinkle-resistant, and breathable.

# HOODIES



REGULAR PULLOVER

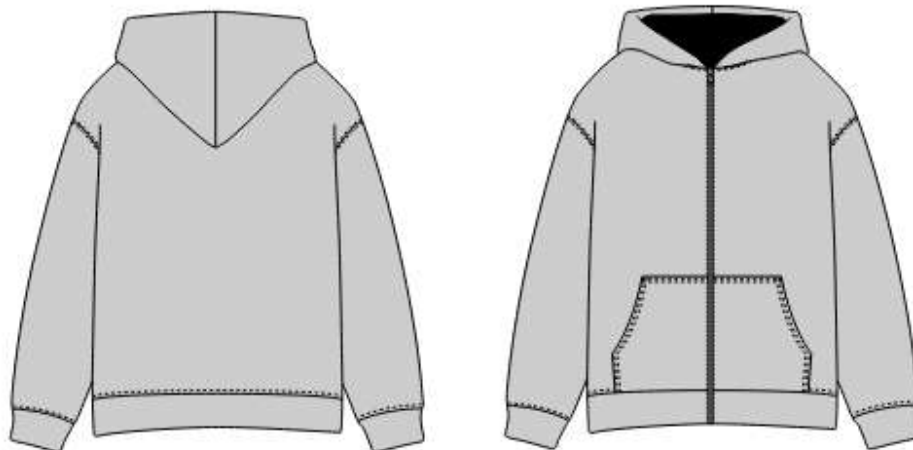


REGULAR ZIP-UP

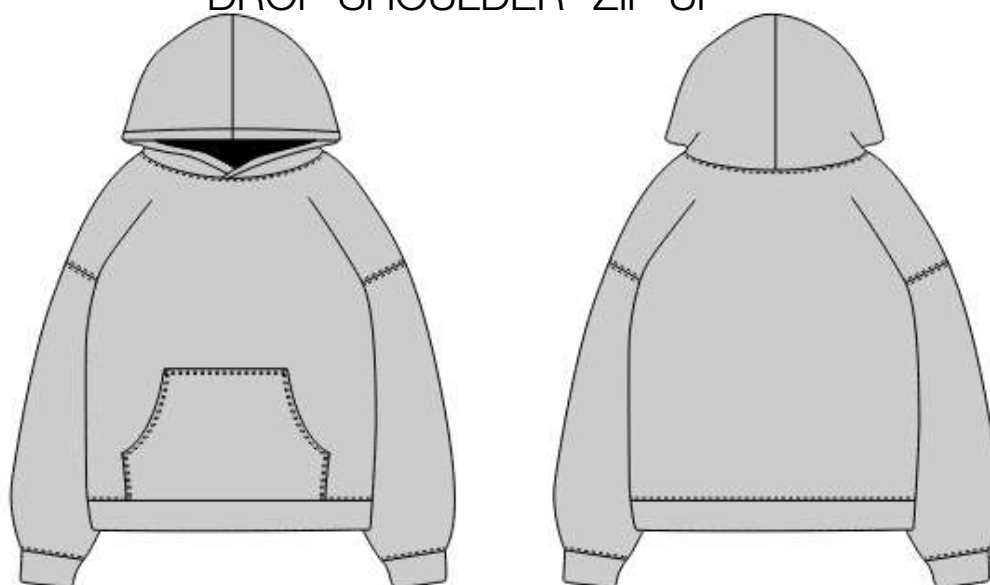


DROP-SHOULDER PULLOVER

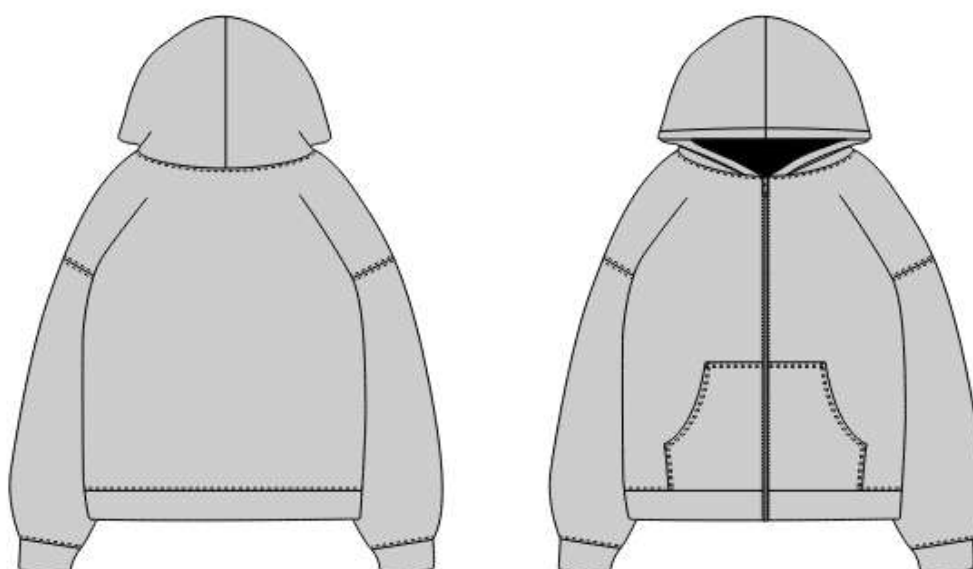
---



DROP-SHOULDER ZIP-UP

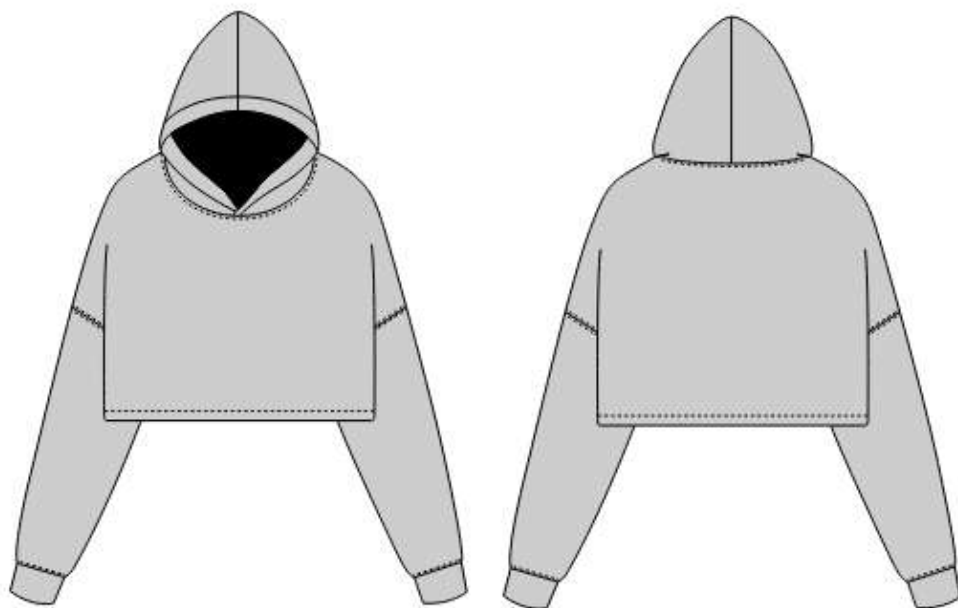


BAGGY FIT PULLOVER

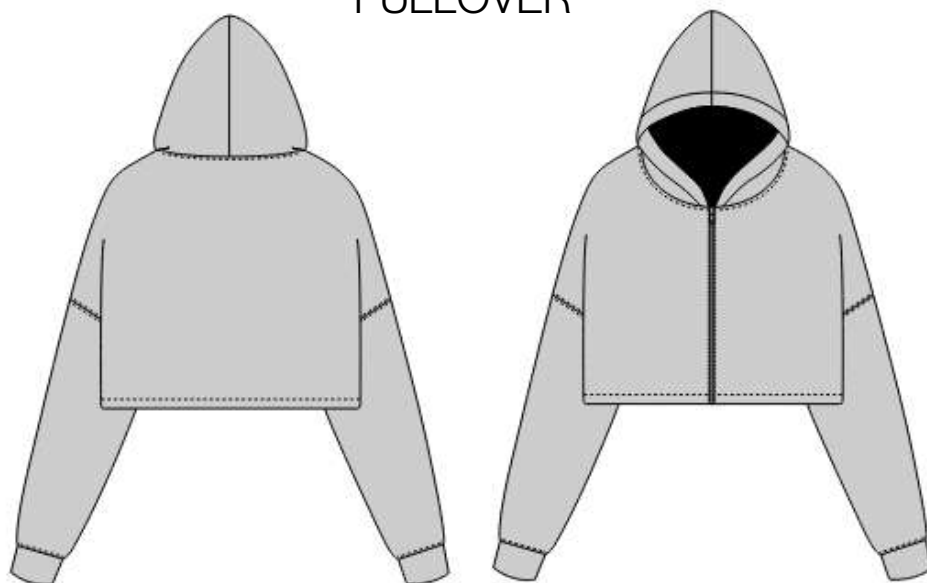


BAGGY FIT ZIP-UP

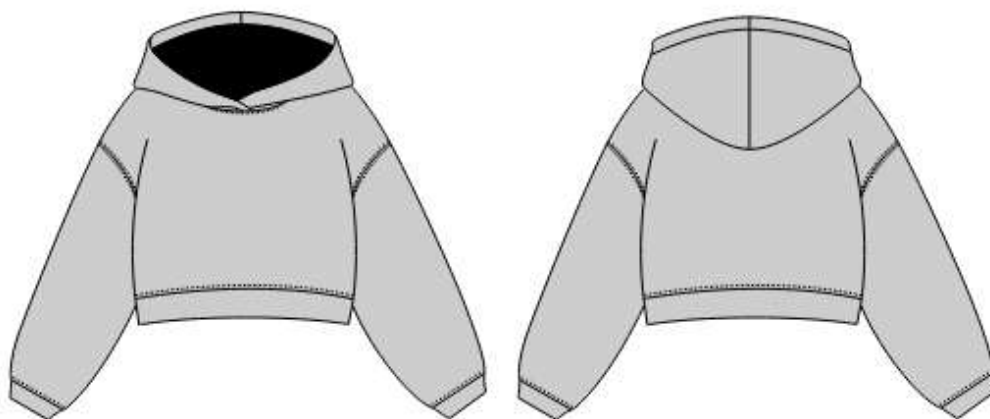
---



DRP-SHOULDER CROPTOP  
PULLOVER

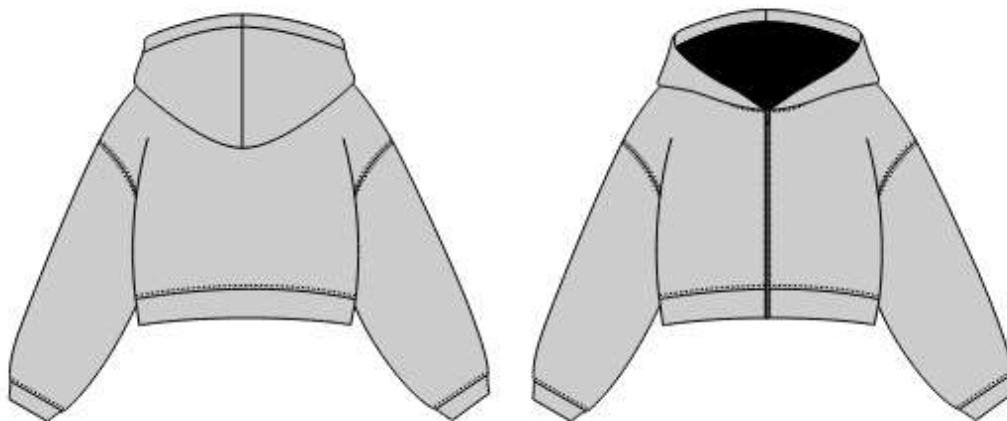


DRP-SHOULDER CROPTOP  
ZIP-UP

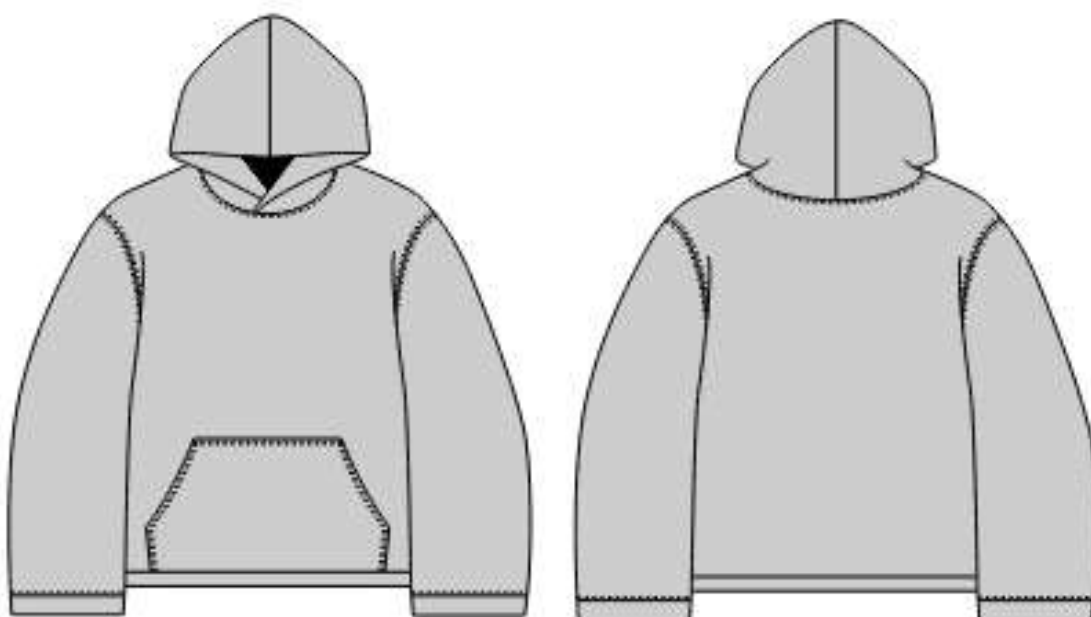


BAGGY FIT CROPTOP PULLOVER

---



BAGGY FIT CROPTOP ZIP-UP



BAGGY FIT RIB LESS PULLOVER



BAGGY FIT RIB LESS ZIP-UP

**\$27-45**

**ALL PRINTING OPTIONS ARE AVAILABLE**

ABOVE COST INCLUDES:

- PRODUCTION CHARGES
  - SHIPPING CHARGES
  - FREE CUSTOM HANGTAGS
  - FREE CUSTOM POLYMAILERS
  - FREE CUSTOM NECKLABELS
-



# FABRICS:

## DIFFERENT GSM RANGES ARE AVAILABLE

### 1. Cotton-Based Fabrics:

- ✓ 100% Cotton Fleece – Soft, breathable, and comfortable with a smooth outer surface and a fuzzy inner layer.
- ✓ French Terry Cotton – Lightweight, absorbent, and breathable with a looped interior (great for all seasons).
- ✓ Combed Cotton – High-quality, smooth, and durable cotton with fewer impurities.
- ✓ Organic Cotton – Eco-friendly and free from synthetic chemicals, offering a natural feel.

### 2. Blended Fabrics:

- ✓ Cotton-Polyester Blend (e.g., 80/20, 60/40, 50/50) – Combines softness of cotton with polyester's durability and wrinkle resistance.
- ✓ Cotton-Spandex Blend – Adds stretch for flexibility and a snug fit.
- ✓ Tri-Blend (Cotton + Polyester + Rayon) – Lightweight, soft, and breathable with a slight stretch.

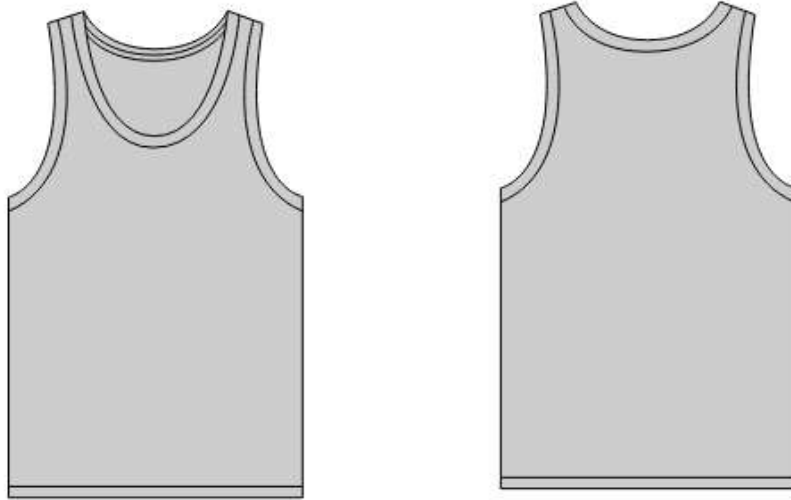
### 3. Polyester-Based Fabrics:

- ✓ 100% Polyester Fleece – Moisture-wicking, durable, and resistant to shrinkage and wrinkles.
- ✓ Microfleece – Ultra-soft and lightweight, ideal for layering.
- ✓ Sherpa Fleece – Thick, warm, and fluffy, often used for lining or full fleece hoodies.

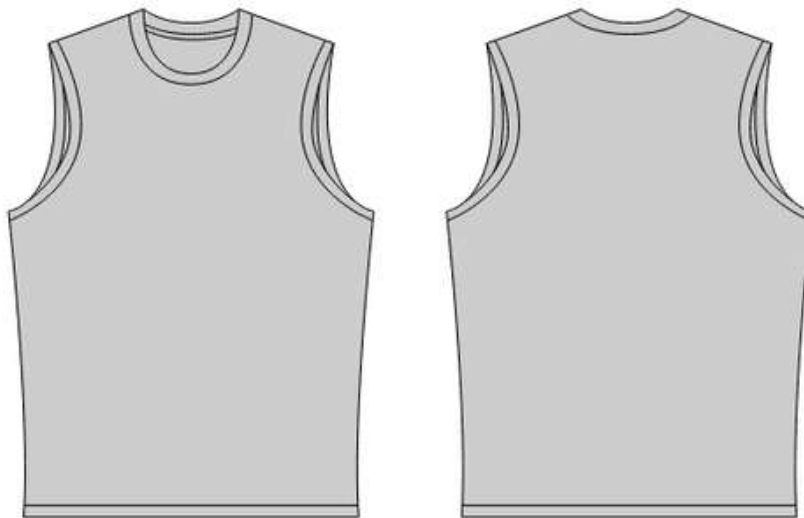
### 4. Heavyweight & Performance Fabrics:

- ✓ Heavyweight Fleece (400 GSM & above) – Thick and warm, ideal for winter wear.
- ✓ Brushed Fleece – Extra-soft interior for warmth and comfort.
- ✓ Terry Fleece – A looped version of fleece, offering a unique texture and warmth.
- ✓ Neoprene – Stretchy, water-resistant, and smooth, commonly used in techwear-style hoodies.

# TANK-TOPS



ATHLETIC TANKTOPS



THICK STRAP TANKTOPS

**\$12-15**

**ALL PRINTING OPTIONS ARE AVAILABLE**

ABOVE COST INCLUDES:

- PRODUCTION CHARGES
  - SHIPPING CHARGES
  - FREE CUSTOM HANGTAGS
  - FREE CUSTOM POLYMAILERS
  - FREE CUSTOM NECKLABELS
-



# FABRICS:

## DIFFERENT GSM RANGES ARE AVAILABLE

### 1. Cotton-Based Fabrics:

- ✓ 100% Cotton – Soft, breathable, and comfortable, ideal for casual wear.
- ✓ Organic Cotton – Eco-friendly and chemical-free, offering a natural feel.
- ✓ Pima/Supima Cotton – Premium cotton with extra durability and softness.

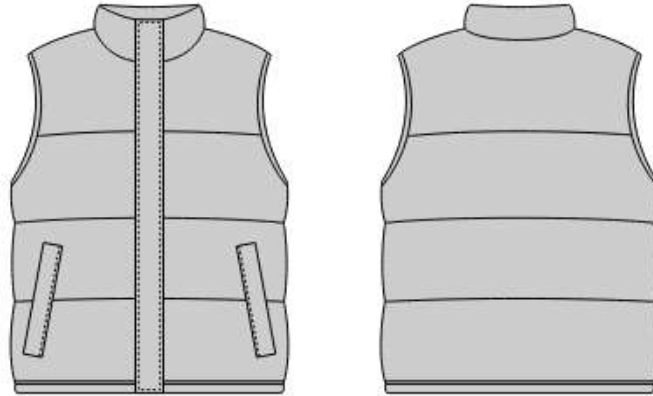
### 2. Blended Fabrics:

- ✓ Cotton-Polyester Blend – Combines cotton's softness with polyester's durability and moisture resistance.
- ✓ Tri-Blend (Cotton + Polyester + Rayon) – Lightweight, ultra-soft, and slightly stretchy.
- ✓ Cotton-Spandex Blend – Adds flexibility and stretch, great for fitted tank tops.

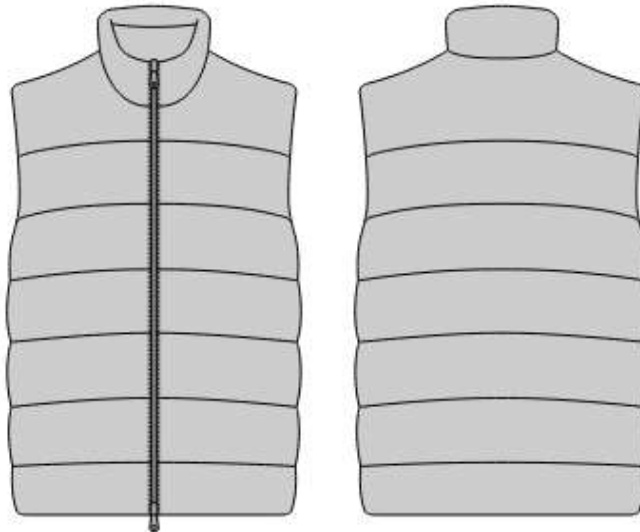
### 3. Performance & Synthetic Fabrics:

- ✓ Polyester – Lightweight, moisture-wicking, and durable, commonly used for athletic wear.
- ✓ Nylon – Strong, smooth, and moisture-resistant, often used in sports tanks.
- ✓ Dri-FIT (Polyester Blend) – High-performance fabric designed for sweat-wicking and breathability.
- ✓ Bamboo Fabric – Soft, antibacterial, and eco-friendly, offering excellent breathability.
- ✓ Modal – Silky smooth, wrinkle-resistant, and breathable, often blended with cotton.

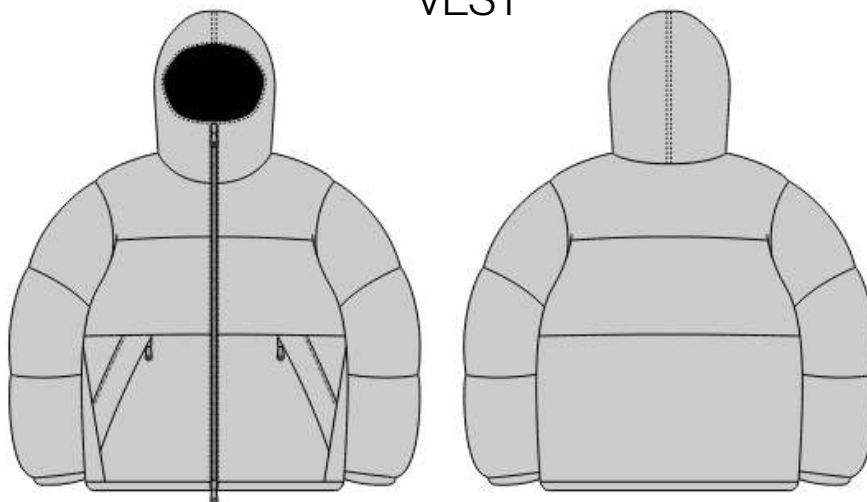
# JACKETS



SLEEVE LESS PUFFER VEST



SLEEVE LESS FULL LENGTH PUFFER VEST

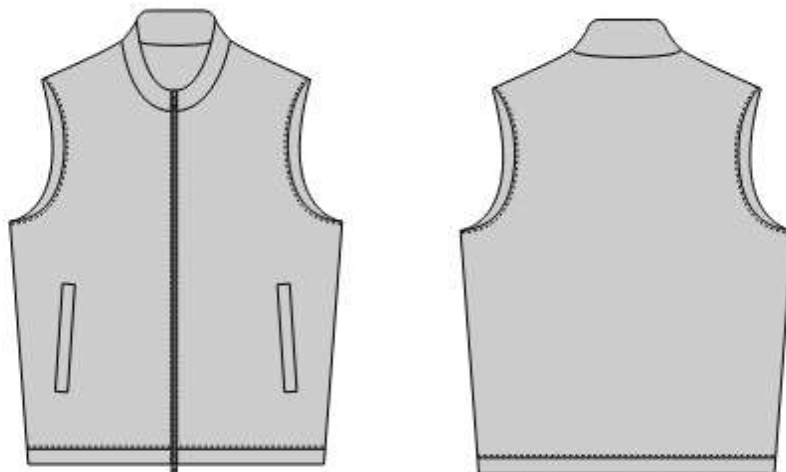


PUFFER JACKET

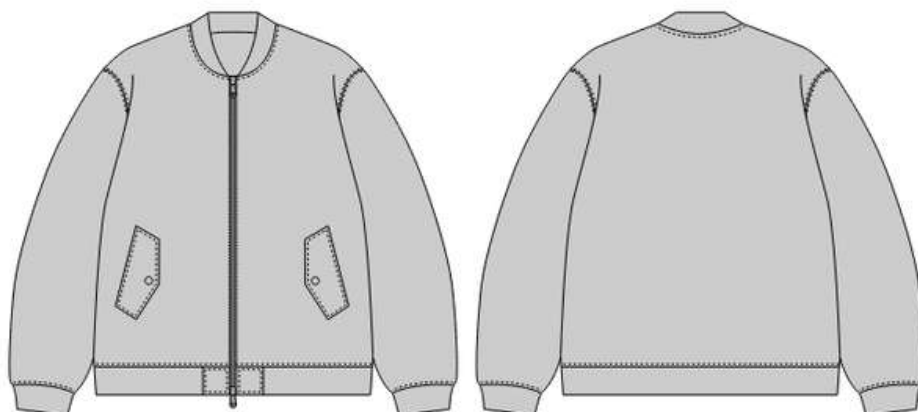
---



FULL LENGTH PUFFER JACKET



SLEEVE LESS BOMBER VEST

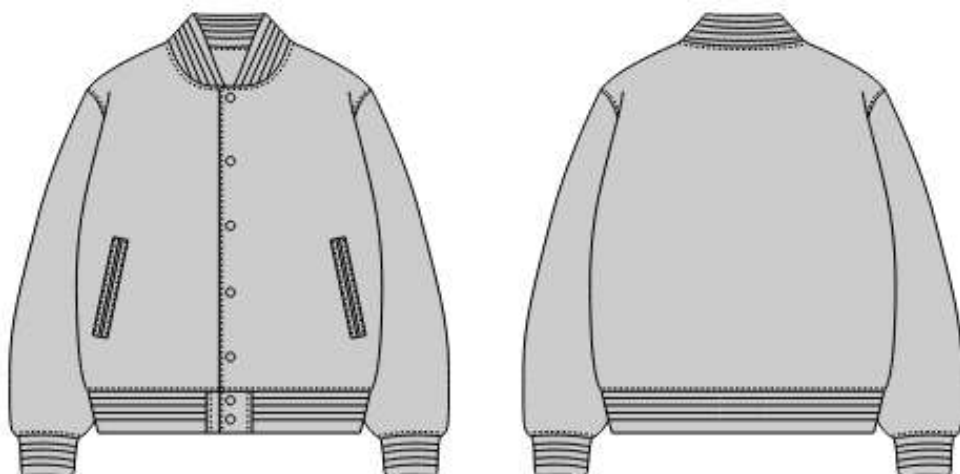


ZIP-UP BOMBER JACKET

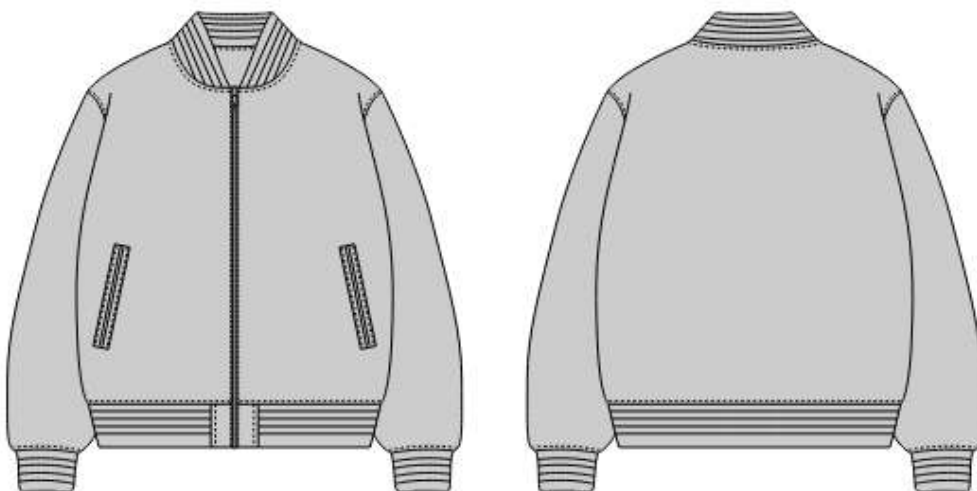
---



BUTTON-UP VARSITY JACKET

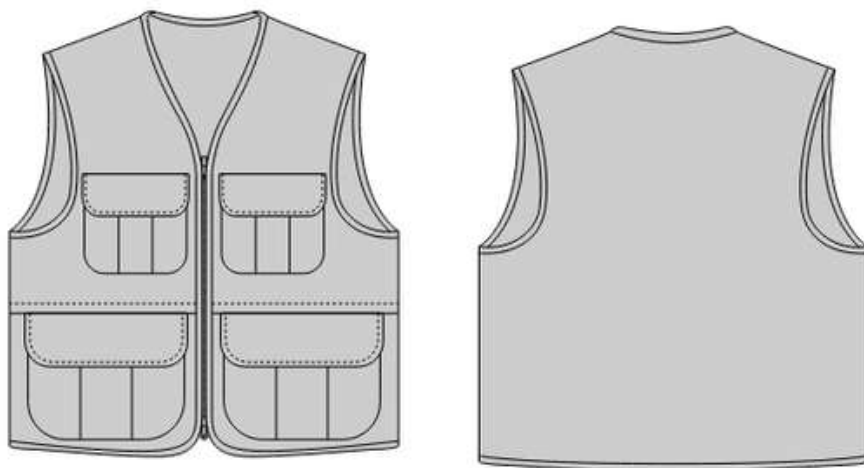


OVERSIZED BUTTON-UP VARSITY  
JACKET

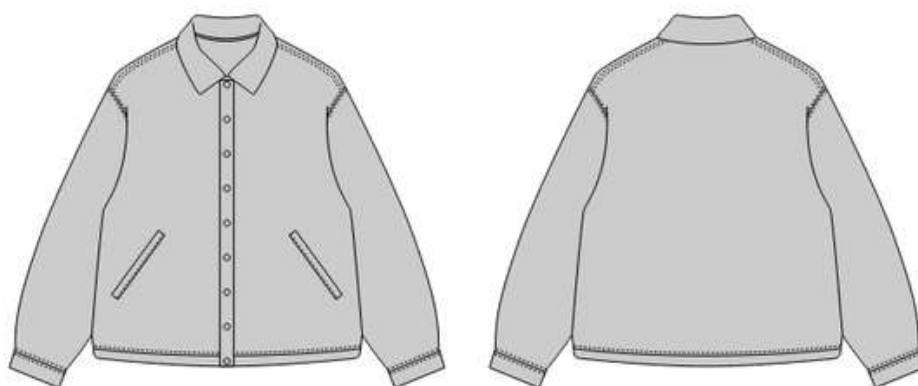


OVERSIZED ZIP-UP VARSITY JACKET

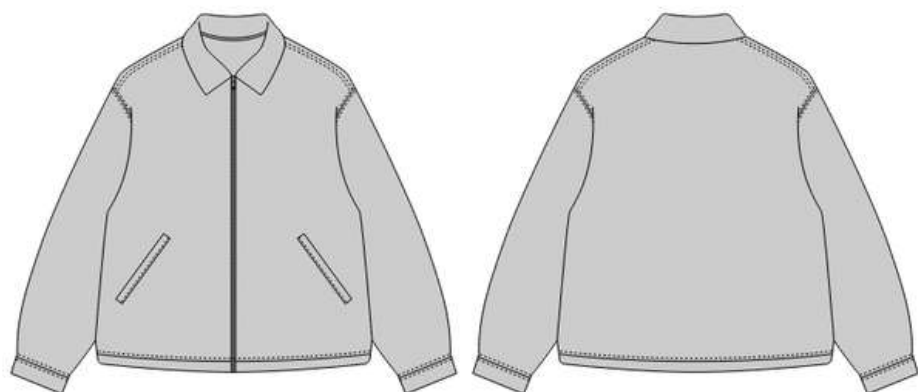
---



TACTICAL VEST



COLLARED BUTTON-UP BOMBER  
JACKET



COLLARED ZIP-UP BOMBER JACKET

**\$33-75**

**ALL PRINTING OPTIONS ARE AVAILABLE**

ABOVE COST INCLUDES:

- PRODUCTION CHARGES
  - SHIPPING CHARGES
  - FREE CUSTOM HANGTAGS
  - FREE CUSTOM POLYMAILERS
  - FREE CUSTOM NECKLABELS
-



# FABRICS:

## DIFFERENT GSM RANGES ARE AVAILABLE

### 1. Outer Shell Fabrics (Durability & Weather Resistance)

- ✓ Nylon – Lightweight, durable, and water-resistant, commonly used for both puffer and bomber jackets.
- ✓ Polyester – Strong, wrinkle-resistant, and water-repellent, ideal for stylish and functional jackets.
- ✓ Ripstop Fabric – Reinforced with a grid pattern to prevent tearing, often used for heavy-duty puffers.
- ✓ Taffeta – Smooth, lightweight, and slightly shiny fabric, offering a sleek look.
- ✓ Softshell Fabric – Stretchy, breathable, and water-resistant, great for casual and performance wear.
- ✓ Waxed Cotton – Provides a rugged, water-resistant finish for a vintage or workwear look.

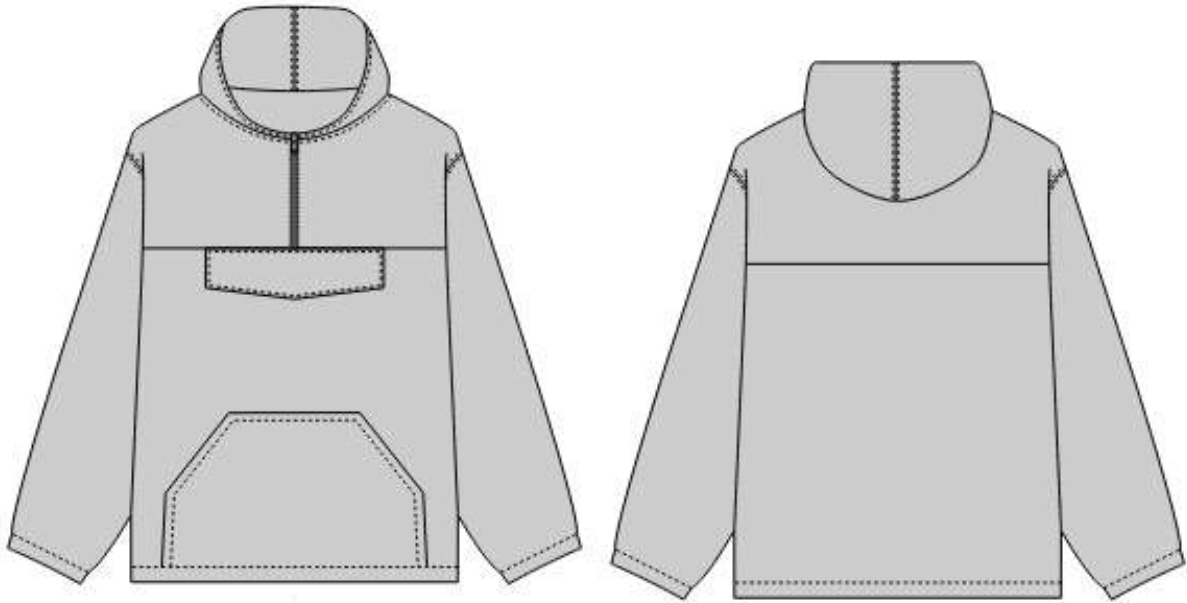
### 2. Insulation Materials (Warmth & Comfort)

- ✓ Polyfill (Synthetic Insulation) – Lightweight, warm, and moisture-resistant, commonly used in puffer jackets.
- ✓ Down Feathers – Premium natural insulation providing exceptional warmth with a lightweight feel.
- ✓ Sherpa Lining – Soft, fluffy, and warm, often used for bomber jackets.
- ✓ Fleece Lining – Lightweight, breathable, and warm, great for mild winter jackets.
- ✓ Thinsulate™ – High-performance synthetic insulation, excellent for extreme cold.

### 3. Inner Lining Fabrics (Comfort & Breathability)

- ✓ Quilted Polyester Lining – Soft, smooth, and helps retain warmth while adding comfort.
- ✓ Satin Lining – Smooth and luxurious, commonly used in bomber jackets for a stylish finish.
- ✓ Mesh Lining – Lightweight and breathable, often used in lightweight bombers for ventilation.
- ✓ Faux Fur Lining – Provides extra warmth and a premium look, often found in winter bombers.

# WINDBREAKER

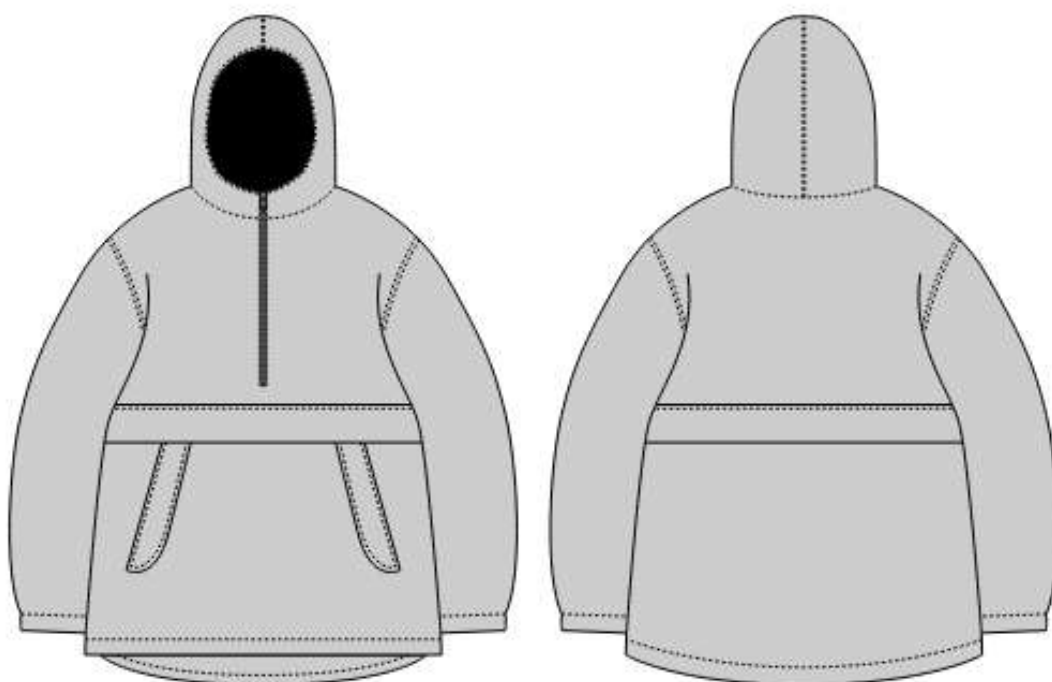


WINDBREAKER HOODIE



WINDBREAKER FULL LENGTH JACKET

---



WINDBREAKER JACKET

**\$33-45**

**ALL PRINTING OPTIONS ARE AVAILABLE**

ABOVE COST INCLUDES:

- PRODUCTION CHARGES
  - SHIPPING CHARGES
  - FREE CUSTOM HANGTAGS
  - FREE CUSTOM POLYMAILERS
  - FREE CUSTOM NECKLABELS
-



# FABRICS:

## DIFFERENT GSM RANGES ARE AVAILABLE

### 1. Lightweight & Water-Resistant Fabrics:

- ✓ Nylon – Durable, lightweight, and wind-resistant, commonly used for classic windbreakers.
- ✓ Polyester – Wrinkle-resistant, water-repellent, and breathable, ideal for performance windbreakers.
- ✓ Microfiber Polyester – Ultra-lightweight and soft with a smooth finish.
- ✓ Ripstop Fabric – Reinforced with a grid pattern to prevent tears, making it ideal for rugged use.

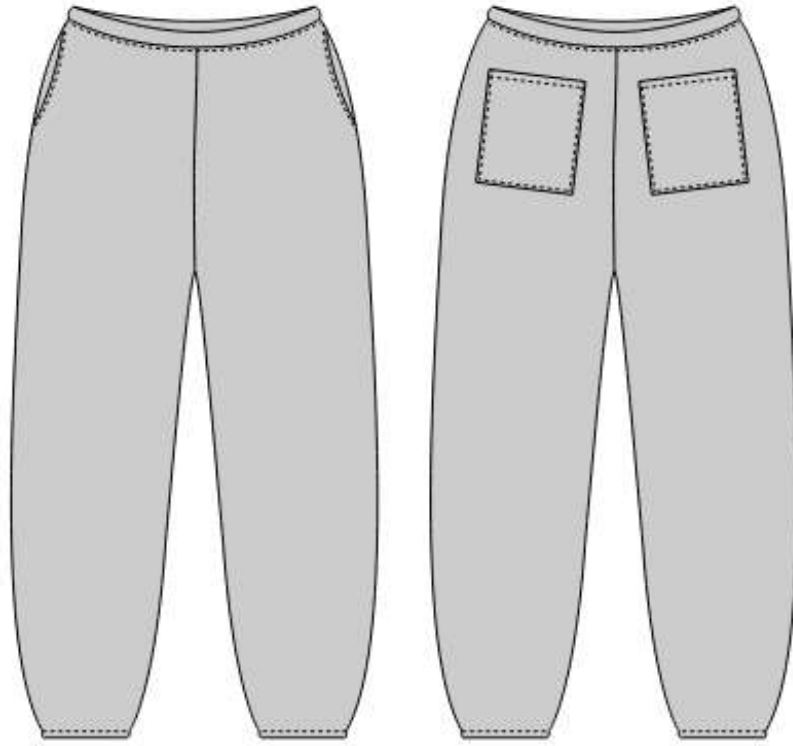
### 2. Performance & Weatherproof Fabrics:

- ✓ Softshell Fabric – A blend of polyester and spandex, offering flexibility, breathability, and light water resistance.
- ✓ Taslan – A durable, water-resistant fabric with a slightly textured finish, great for sporty windbreakers.
- ✓ Gore-Tex® – High-performance waterproof and windproof fabric with excellent breathability.
- ✓ Taffeta – Smooth, slightly shiny, and lightweight, commonly used as a windbreaker lining.

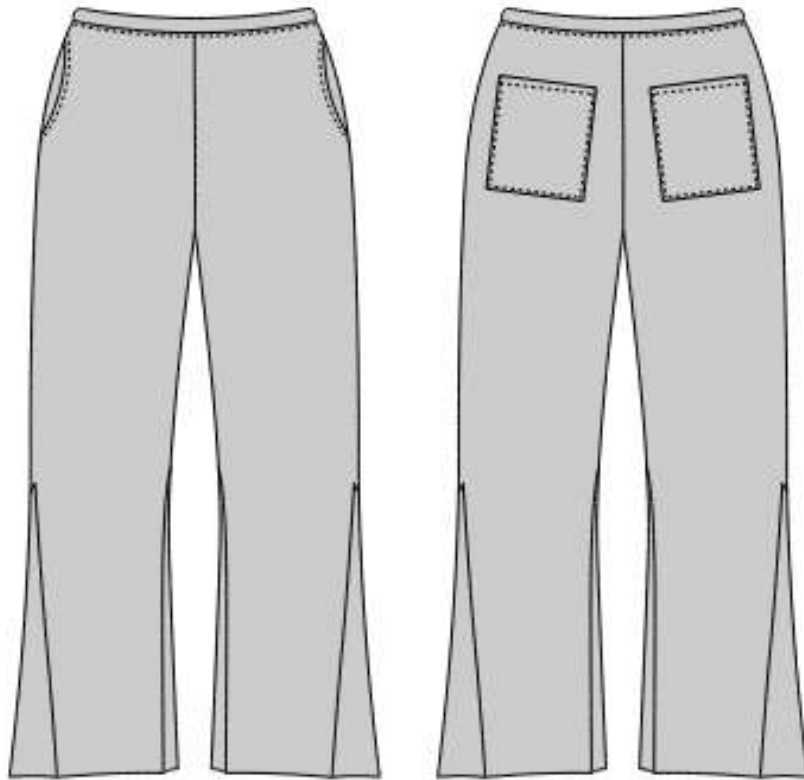
### 3. Lined Fabrics for Warmth & Comfort:

- ✓ Mesh Lining – Provides breathability and moisture-wicking for sports windbreakers.
- ✓ Fleece Lining – Adds warmth while maintaining a lightweight feel, great for cool weather.
- ✓ Quilted Polyester Lining – Adds slight insulation while keeping the jacket lightweight.

# SWEATPANTS



REGULAR SWEATPANTS



FLARED SWEATPANTS

---

# **\$22-35**

## **ALL PRINTING OPTIONS ARE AVAILABLE**

**ABOVE COST INCLUDES:**

- PRODUCTION CHARGES
- SHIPPING CHARGES
- FREE CUSTOM HANGTAGS
- FREE CUSTOM POLYMAILERS
- FREE CUSTOM NECKLABELS



# FABRICS:

## DIFFERENT GSM RANGES ARE AVAILABLE

### 1. Cotton-Based Fabrics:

- ✓ 100% Cotton Fleece – Soft, breathable, and comfortable with a smooth outer surface and a fuzzy inner layer.
- ✓ French Terry Cotton – Lightweight, absorbent, and breathable with a looped interior (great for all seasons).
- ✓ Combed Cotton – High-quality, smooth, and durable cotton with fewer impurities.
- ✓ Organic Cotton – Eco-friendly and free from synthetic chemicals, offering a natural feel.

### 2. Blended Fabrics:

- ✓ Cotton-Polyester Blend (e.g., 80/20, 60/40, 50/50) – Combines softness of cotton with polyester's durability and wrinkle resistance.
- ✓ Cotton-Spandex Blend – Adds stretch for flexibility and a snug fit.
- ✓ Tri-Blend (Cotton + Polyester + Rayon) – Lightweight, soft, and breathable with a slight stretch.

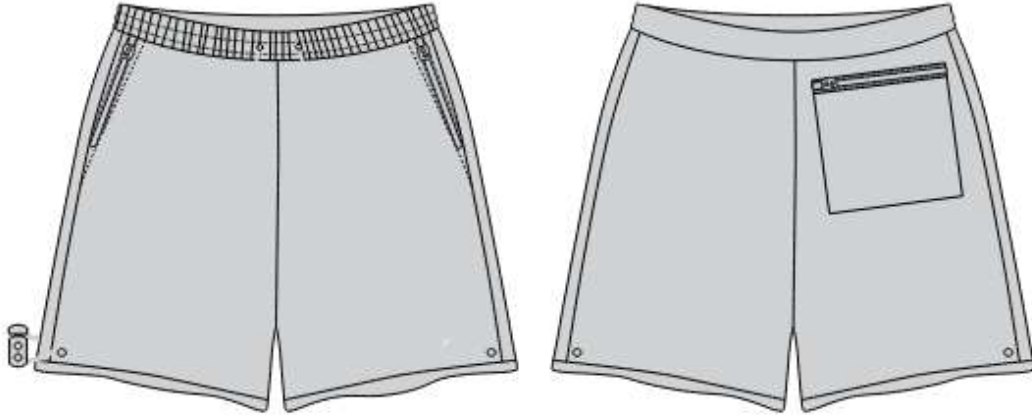
### 3. Polyester-Based Fabrics:

- ✓ 100% Polyester Fleece – Moisture-wicking, durable, and resistant to shrinkage and wrinkles.
- ✓ Microfleece – Ultra-soft and lightweight, ideal for layering.
- ✓ Sherpa Fleece – Thick, warm, and fluffy, often used for lining or full fleece hoodies.

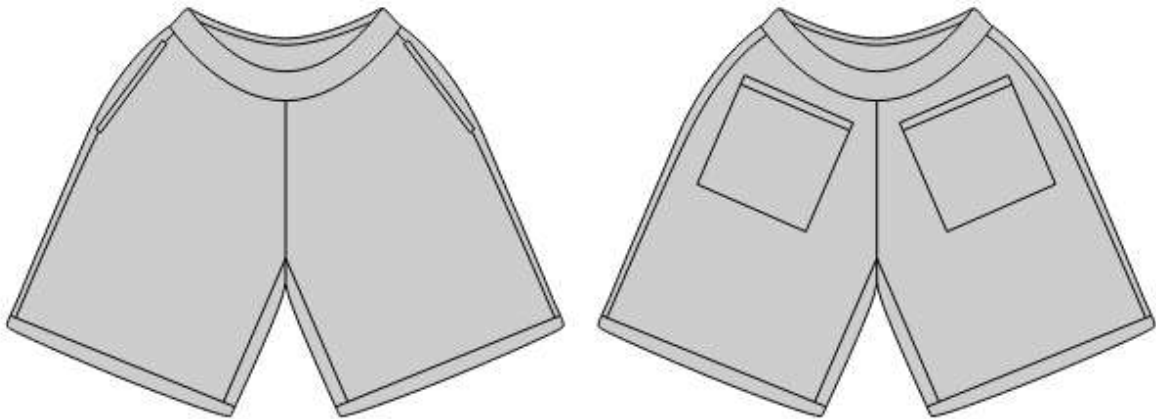
### 4. Heavyweight & Performance Fabrics:

- ✓ Heavyweight Fleece (400 GSM & above) – Thick and warm, ideal for winter wear.
- ✓ Brushed Fleece – Extra-soft interior for warmth and comfort.
- ✓ Terry Fleece – A looped version of fleece, offering a unique texture and warmth.
- ✓ Neoprene – Stretchy, water-resistant, and smooth, commonly used in techwear-style hoodies.

# SHORTS



REGULAR SHORTS



SKIN FIT SHORTS

**\$18-25**

**ALL PRINTING OPTIONS ARE AVAILABLE**

ABOVE COST INCLUDES:

- PRODUCTION CHARGES
  - SHIPPING CHARGES
  - FREE CUSTOM HANGTAGS
  - FREE CUSTOM POLYMAILERS
  - FREE CUSTOM NECKLABELS
-



# FABRICS:

## DIFFERENT GSM RANGES ARE AVAILABLE

### 1. Casual & Everyday Wear:

- ✓ Cotton – Soft, breathable, and comfortable, perfect for everyday shorts.
- ✓ Twill – A durable cotton-based fabric with a slight texture, used for chino and cargo shorts.
- ✓ Denim – Strong and stylish, commonly used for jean shorts.
- ✓ Linen – Lightweight, breathable, and ideal for summer wear.

### 2. Sports & Performance Wear:

- ✓ Polyester – Lightweight, moisture-wicking, and durable, great for athletic shorts.
- ✓ Nylon – Smooth, quick-drying, and water-resistant, used for running and swim shorts.
- ✓ Spandex/Lycra Blend – Stretchy and form-fitting, ideal for gym, cycling, and compression shorts.
- ✓ Dri-FIT (Polyester Blend) – High-performance, sweat-wicking fabric for activewear.

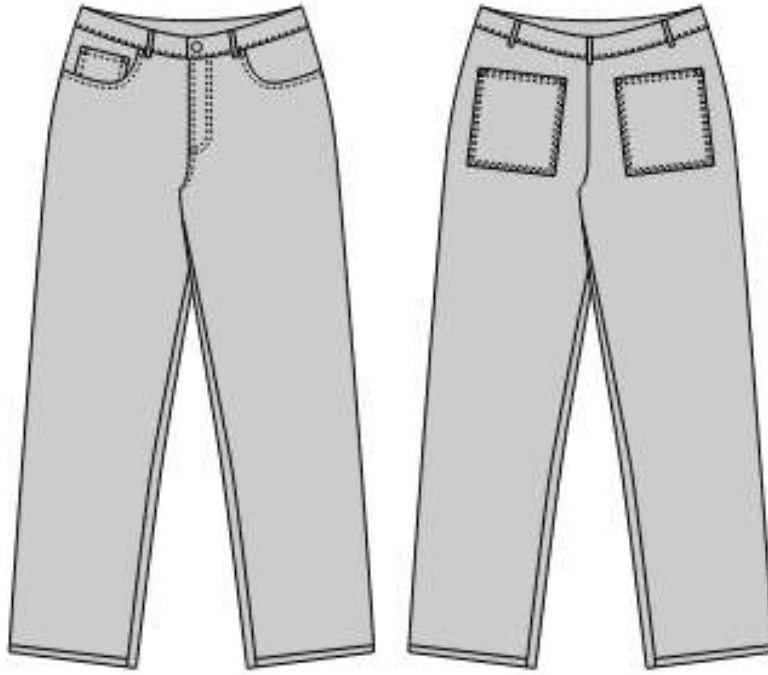
### 3. Swim & Water-Resistant Shorts:

- ✓ Nylon/Polyester Blend – Quick-drying and lightweight, commonly used for swim trunks.
- ✓ Microfiber Polyester – Soft, lightweight, and water-resistant for beachwear.
- ✓ Boardshort Fabric – A durable, flexible polyester blend with water-repellent coating.

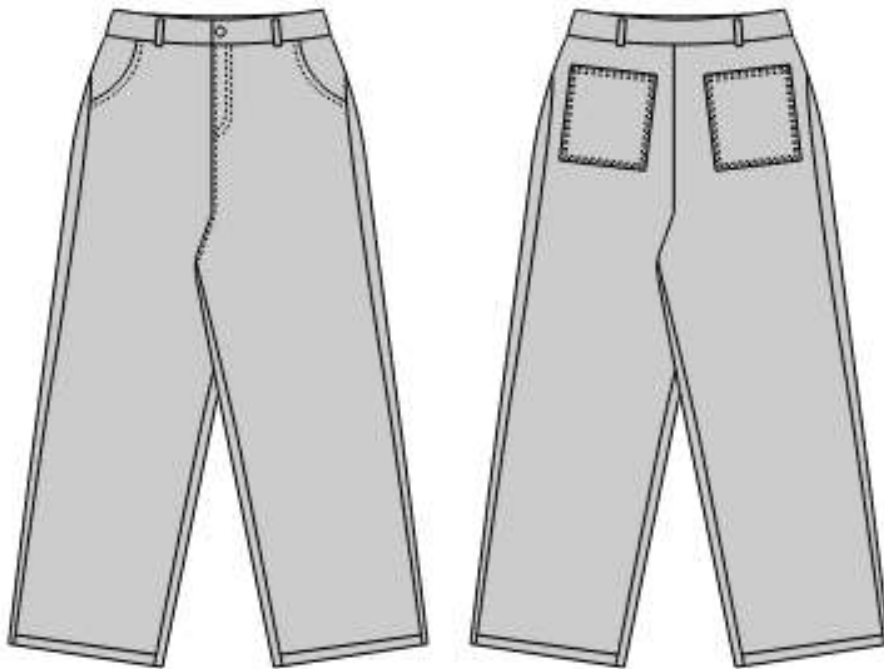
### 4. Work & Utility Shorts:

- ✓ Canvas – Heavy-duty and durable, great for work or cargo shorts.
- ✓ Ripstop Fabric – Reinforced to prevent tearing, used in tactical and military shorts.

# DEBIM JEANS

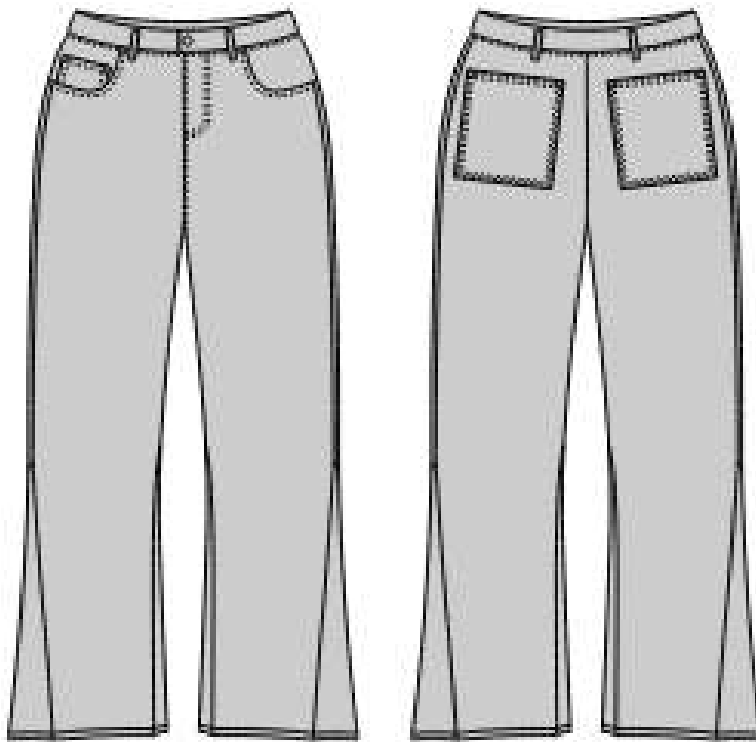


REGULAR JEANS

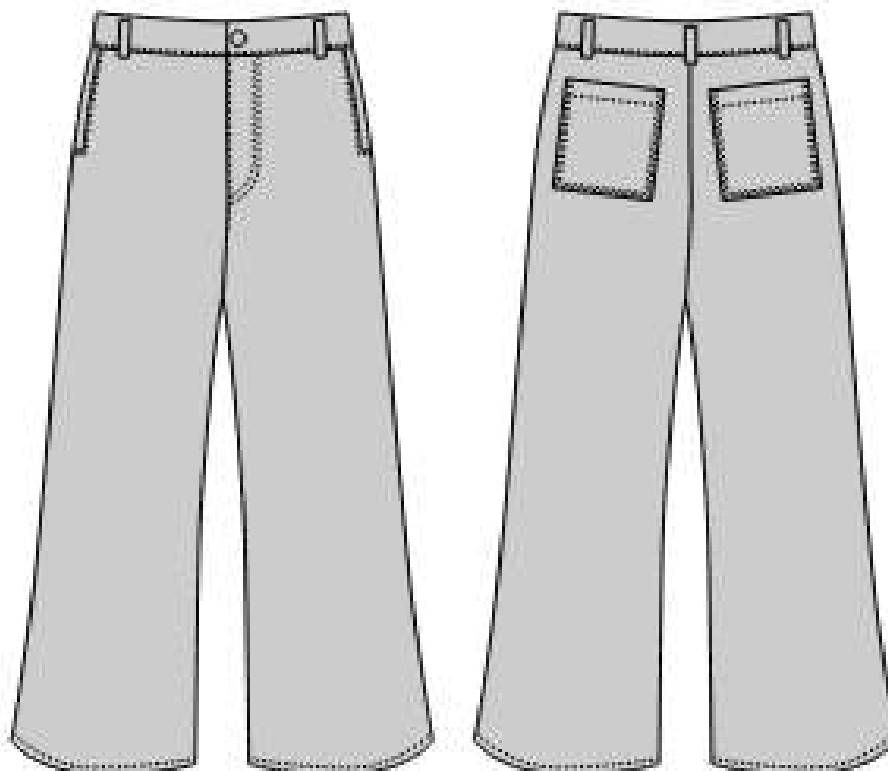


BAGGY FIT JEANS

---

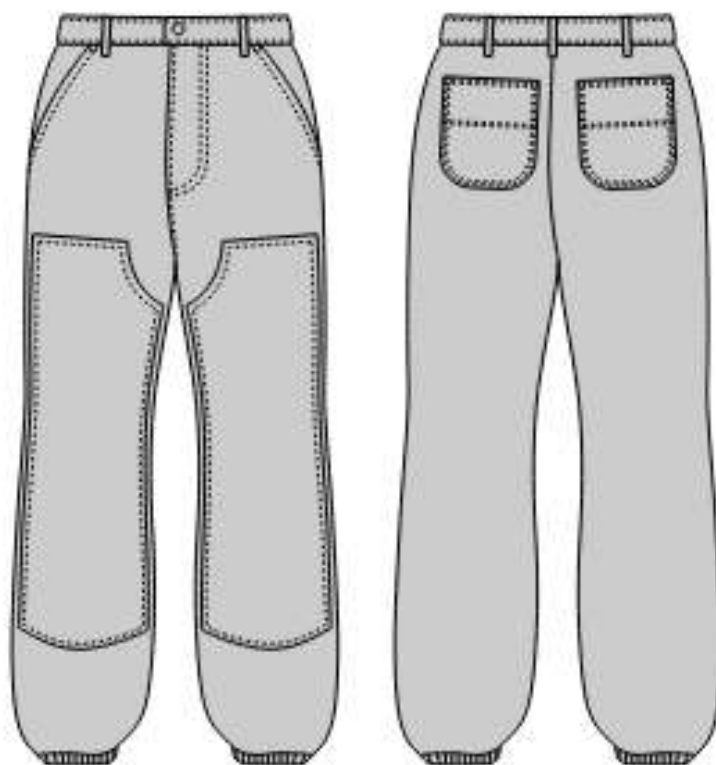


BOOTY FIT FLARED JEANS



REGULAR FIT FLARED JEANS

---



RIBBED BOTTOM JEANS

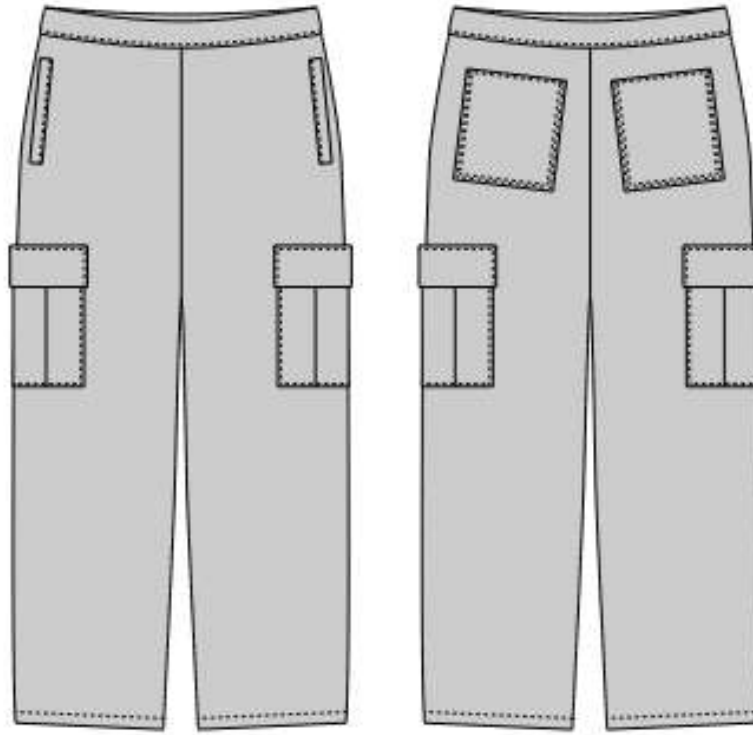
**\$28-40**

**ALL PRINTING OPTIONS ARE AVAILABLE**

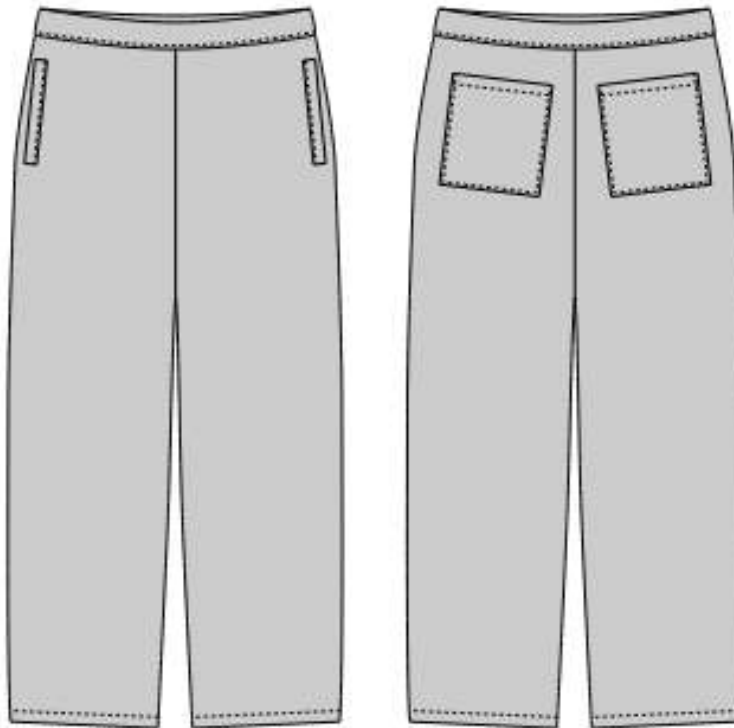
ABOVE COST INCLUDES:

- PRODUCTION CHARGES
  - SHIPPING CHARGES
  - FREE CUSTOM HANGTAGS
  - FREE CUSTOM POLYMAILERS
  - FREE CUSTOM NECKLABELS
-

# CARGO PANTS



6 POCKET CARGO PANT



4 POCKET CARGO PANT

---

# \$28-40

## ALL PRINTING OPTIONS ARE AVAILABLE

ABOVE COST INCLUDES:

- PRODUCTION CHARGES
- SHIPPING CHARGES
- FREE CUSTOM HANGTAGS
- FREE CUSTOM POLYMAILERS
- FREE CUSTOM NECKLABELS



# FABRICS:

## DIFFERENT GSM RANGES ARE AVAILABLE

### 1. Durable & Heavy-Duty Fabrics (For Workwear & Tactical Use)

- ✓ Cotton Twill – A durable and breathable fabric with a slight texture, commonly used for classic cargo pants.
- ✓ Ripstop Cotton – Reinforced with a crosshatch weave to prevent tearing, ideal for rugged and tactical cargo pants.
- ✓ Canvas – Heavy-duty and abrasion-resistant, great for workwear cargo pants.
- ✓ Denim – Thick and durable, offering a stylish and long-lasting option for casual cargo pants.

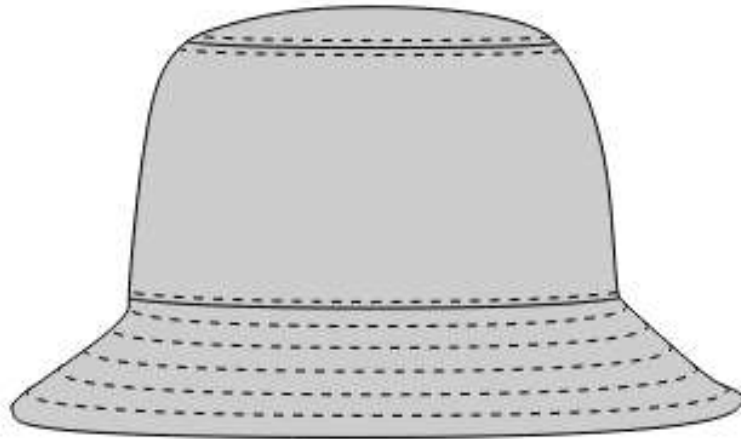
### 2. Lightweight & Breathable Fabrics (For Comfort & Casual Wear)

- ✓ Cotton Blend (Cotton + Polyester/Spandex) – Combines softness with added stretch and durability.
- ✓ Linen-Cotton Blend – Lightweight, breathable, and perfect for warm-weather cargo pants.
- ✓ Microfiber Polyester – Soft and lightweight with moisture-wicking properties.

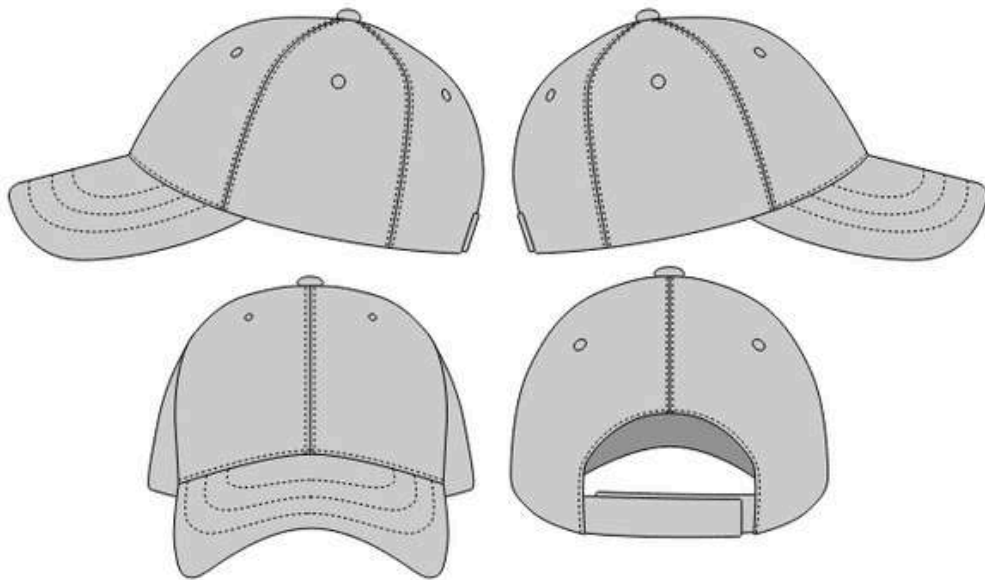
### 3. Performance & Tactical Fabrics (For Outdoor & Military Use)

- ✓ Ripstop Nylon – Lightweight, tear-resistant, and water-resistant, great for outdoor and military-style cargo pants.
- ✓ Softshell Fabric – Water-resistant and slightly stretchy, offering flexibility and comfort.
- ✓ Polyester-Cotton Blend (Poly-Cotton Twill) – Strong, wrinkle-resistant, and moisture-wicking, used for tactical and uniform cargo pants.

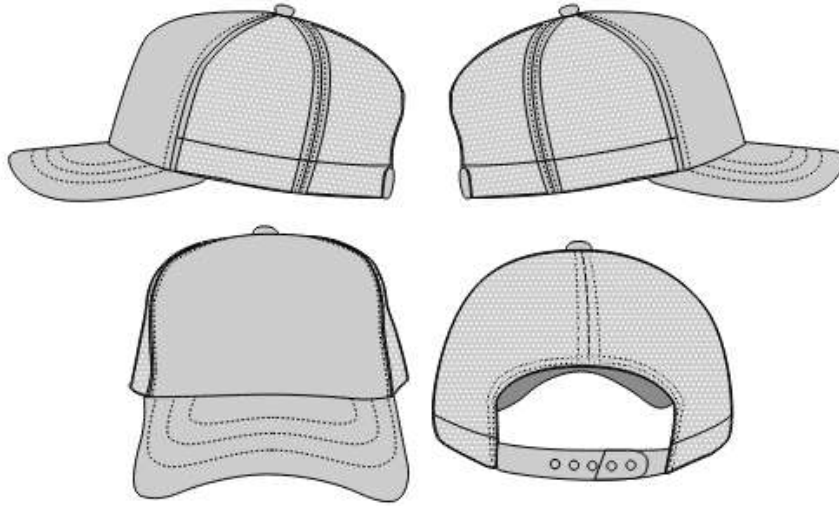
# HATS & BEANIES



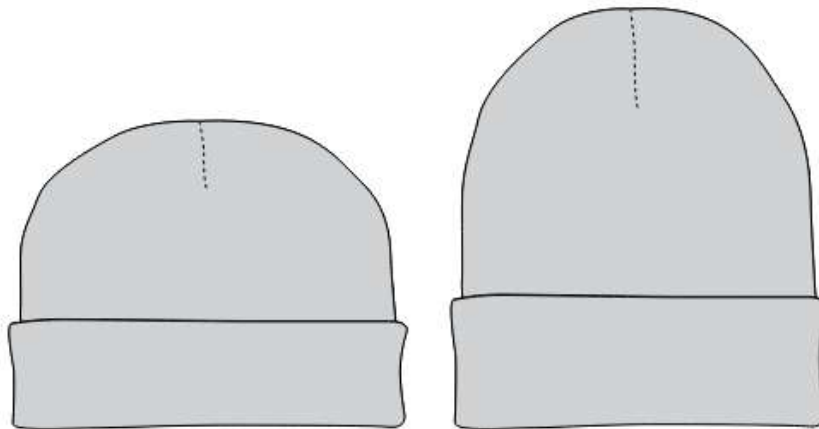
6 POCKET CARGO PANT



BASEBALL HAT



DAD HAT



BEANIES

**\$9-14**

**ALL PRINTING OPTIONS ARE AVAILABLE**

ABOVE COST INCLUDES:

- PRODUCTION CHARGES
  - SHIPPING CHARGES
  - FREE CUSTOM HANGTAGS
  - FREE CUSTOM POLYMAILERS
  - FREE CUSTOM NECKLABELS
-



# FABRICS:

## DIFFERENT GSM RANGES ARE AVAILABLE

- **Baseball Caps:**

Cotton: Soft, breathable, and lightweight, cotton is popular for casual baseball caps.

Polyester: Durable, moisture-wicking, and resistant to wrinkles, polyester is often used in performance or sports caps.

Blends: A mix of cotton and polyester provides both comfort and durability.

- **Trucker Hats:**

Polyester Mesh: Often used for the back panel to provide breathability and a lightweight feel.

Cotton/Polyester Blend: For the front panel, offering structure and comfort.

- **Flat Caps:**

Wool: A classic fabric for flat caps, offering warmth and a stylish, formal look.

Tweed: A textured wool fabric, popular for vintage-style flat caps.

Cotton or Linen: Lighter versions are great for warmer weather.

- **Beanies:**

Acrylic: Lightweight, soft, and durable, acrylic is a common choice for winter beanies.

Wool: Provides excellent warmth and insulation, making it a popular choice for colder weather.

Merino Wool: A finer and softer type of wool, great for a premium feel.

Knit Cotton: Soft and breathable, often used in lighter beanies for cooler weather.

- **Bucket Hats:**

Cotton: Lightweight, breathable, and comfortable, perfect for casual and summer bucket hats.

Canvas: A sturdier fabric that offers a more structured look for outdoor wear.

Nylon or Polyester: Water-resistant options for outdoor or rainy weather.



# **SPORTS WEAR**



---



# FOOTBALL UNIFORMS





# BASEBALL UNIFORMS





# BASKET BALL UNIFORMS





# MARTIAL ARTS UNIFORMS



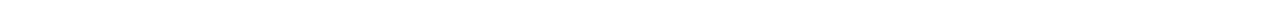


# GYM WEAR





# GYM WEAR





# SWIM WEAR





# SWIM WEAR



# PRINTING OPTIONS



## SCREEN PRINT



## PUFF PRINT

---



## **EMBROIDERY**



## **CHENNILE EMBROIDERY**

---



## **SILICONE PRINT**



## **EMBOSSING**

---



## **DTF PRINTING**



## **SUBLIMATION**

---



## EMBROIDERED PATCHES

---



**THANK  
YOU**