



CLEOPATRA<sup>TM</sup>  
LUX  
FRACTIONAL BIO-INFUSION SYSTEM

## Advanced Fractional Bio-Infusion System

A leap forward in **Skin Rejuvenation**

**CLEOPATRA** For the **Skin You Deserve!**  
The **Most Advanced Five-in-One Skin Health System**  
for Unrivalled Results.





# CLEOPATRA<sup>TM</sup>

## LUX

FRACTIONAL BIO-INFUSION SYSTEM

**CLEOPATRA**, “a woman of surpassing beauty,” stands for it’s powerful associations that captures the essence of our unique treatment: Beautiful, Powerful, Seductive, Irresistible, Brilliant and Regal.

A **Revolutionary** Approach to the Treatment of a Variety of Skin Conditions and Aging Skin. A complete Bio-Stimulation and Transdermal Delivery System.

**CLEOPATRA** system assists in the improvement of aging skin, tightens and brightens the complexion, and reduces the appearance of pore size, sunspots, uneven skin tone, and blemishes, creating long-term improvement by boosting circulation and natural evacuation processes.

**Designed for all skin types.**



**Regardless of your skin type or skin condition, CLEOPATRA Transforms you for your best skin possible.**



**Fresh, Firm and Radiant skin with CLEOPATRA's Unique Five Feature Process; Unsurpassed Results that last!**





**CLEOPATRA** is the **ONLY** device combining 5 of the latest in aesthetic treatments providing you with the **benefits of multiple technologies** in one.

## UNIQUE combination of 5 Synergistic Clinically Proven Technologies



### 1- Cupping

A versatile tool for a relaxing massage and a detoxifying lymphatic drainage treatment for lasting skin health.



### 2- CleoAbrasor™

A unique dermabrasion tool for controlled exfoliation and evacuation with simultaneous serum infusion into the skin.



### 3- CleoFrac™

A fractional Bio-Infusion head with nano-needles of varying needle depth actively creates micro-channels, which helps improve the infusion of the Advanced Bio-Active Serums into the skin.



### 4- CleoCurrent

The latest microcurrent technology that uses microamps to mimic the body's natural electrical current and re-educate, tone, hydrate, and revitalize the skin.



### 5- CleoOxy Infusion

Using advanced technology infusing oxygen into your skin to improve health and appearance.



### LED Light \*Sold separately

The application of LED Light completes the unique process to provide a spectacular result; Fresh, Firm and Radiant skin.



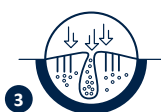
Detoxify

Exfoliate and Evacuate

Infuse

Re-Educate

Soothe and refresh



**CLEOPATRA** is versatile; there are many ways to use the device. You can easily switch from **CleoCupping** massage to **CleoAbrasor** exfoliation, followed by **CleoFrac** micro-channeling, then a **CleoCurrent** lifting, with **CleoOxy** infusion and **CleoLED\*** therapy to finish – complemented by the infusion of a variety of available **Advanced Bio-Active Serums**.

Every **Cleopatra Accessory** is specifically designed to work in unison with the others, allowing you to mix and match your treatment modalities according to what best suits your client's needs.



## **Cupping Handpiece For Massage & Lymphatic Drainage**

Cupping adds a relaxing, sensory element to any Cleopatra skin treatment.

### **Soothe and Detoxify**

- Cupping is an effective, relaxing method of delivering a face or body massage to relieve tension and improve circulation.
- The handpiece also works by targeting the lymph nodes in the face, neck, and chest. Cupping assists the lymphatic system's natural drainage process to cleanse and remove toxins.
- Cleopatra's cupping handpiece effectively drains the body of waste and toxins while calming any swelling and/or puffiness, leaving the skin with a firmer, brighter look.



# Skin that Looks Radiant and Youthful with CLEOPATRA's Five-in-One Treatment Process



CLEO  ABRASOR™  
MICROFUSION ABRASION

An exfoliating head removes and evacuates dead skin cells while simultaneously infusing Advanced Bio-Active Serums to help with a wide range of skin conditions.

## Exfoliation, Evacuation and Infusion

- Re-Engineered oval head provides improved access to deep folds.
- The head design gently draws the skin up to an abrasive strip to exfoliate dead cells.
- Simultaneous introduction of Advanced Bio-Active Serums via a closed-circuit vacuum.
- Variable flow and pressure for perfect control for patient comfort.
- A range of grits for different skin types.
- Simultaneous Infusing of one, two or three different Infusions.

## Triple Action Infusion:

1. Exfoliation removes skin barrier, eases the entry of the solutions into the skin.
2. Pneumatic pressure pushes molecules into the skin for improved delivery.
3. Micro-encapsulation of Bio-Active Ingredients helps penetration of molecules through the skin.





An Innovative design that gently creates **Micro-Channels** under a sealed vacuum to more effectively deliver micro-encapsulated actives serums deep into the skin for a more youthful complex.



### **Rolling Micro-Channeling**

- Suction is created through closed-loop vacuum technology that draws skin flush with a rectangular-shaped tip.
- Nano-needles on a roller within the tip create micro-channels when passed over the skin.
- A simultaneous flow of bio-active serums is applied to the skin, permeating through the micro-channels.
- Action of micro-channeling provides bio-stimulation for smoother, healthier, more hydrated skin.
- Helps increase the production of collagen and elastin.

### **• Triple Action Infusion:**

1. Closed circuit vacuum uses pneumatic pressure to push Advanced Bio-Active Serums into the skin.
2. Advanced Bio-Active Serums also penetrate deeper via the micro-channels.
3. Micro-encapsulated Bio-Active Ingredients penetrate more easily into the skin.





## CLEOCURRENT™

NON INVASIVE MICRO-CURRENT FACELIFT

Gentle electric currents strategically target the muscles of the face for comprehensive facial toning and tightening.

### Re-Education and Toning

- CleoCurrent releases microamps that mimic the body's natural electric current to penetrate deep into the skin.
- These low-level microamps relax overused facial muscles and stimulate underused ones for a calming yet lifting effect.
- Facial muscles are safely re-educated: sagging muscles become lifted, facial contours become more defined, and wrinkles are filled out with brighter, more even, and more hydrated skin.

### A Non-Invasive “Facelift”

CleoCurrent helps with signs of aging and discoloration; improves muscle tone and circulation; and creates more hydrated, younger-looking skin.





**Oxygen infusion** treatment delivers concentrated oxygen and nutrients to the skin, hydrating and revitalizing for a glowing, youthful complexion.



### Calm, Refresh and Rehydrate

- Cleopatra Oxygen treatments deeply moisturize the skin, leaving it soft and supple.
- Oxygen infusion promotes cell regeneration and repairs damaged skin cells, reducing signs of aging.
- CleoOxy soothes irritated and sensitive skin, reducing redness and inflammation after abrasive treatments.
- Enhanced Absorption: Improves the effectiveness of skincare products by allowing deeper penetration of active ingredients.

### CleoOxy treatment

Enhances skin firmness and reduces fine lines and wrinkles. It also soothes irritated skin and speeds up the healing process in damaged skin.





# CLEO<sup>TM</sup>XTRACTOR

THE PERFECT ADDITION FOR TOTAL SKIN HEALTH

## Bonus Pore Extractor Tool

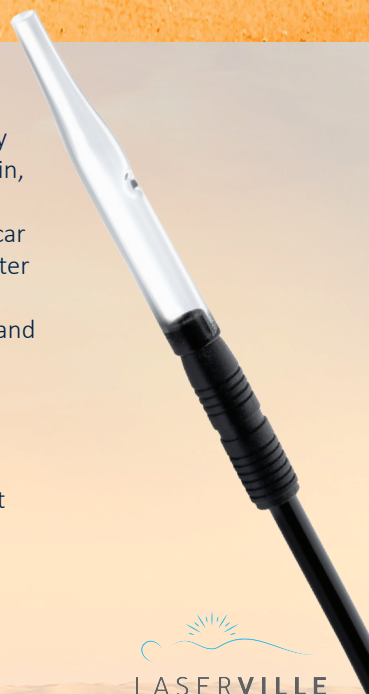
Effectively clear clogged pores and remove oil, impurities, and dust particles.

### Advanced Blackhead Extraction

- The negative vacuum in CleoXtractor can effectively remove stubborn blackheads, whiteheads, dead skin, sebum and makeup residues.
- Forcing blackheads out by hand can damage and scar the skin – the extractor tool is more gentle and better for skin health.
- CleoXtractor's suction helps to tighten large pores and stimulate blood circulation in areas of use.

### The Perfect Addition for Total Skin Health

The CleoXtractor is a bonus tool that can be used in combination with any or all of Cleopatra's 5 treatment technologies.





BIO-STIMULATION LED LIGHT THERAPY

Effective Bio-Stimulation through LED Light Therapy Post Fractional Bio-Infusion. Red, Green, Blue, Purple, Yellow, Orange, and Cyan light helps stimulate collagen and elastin production and eliminates bacteria while reducing redness and inflammation.

The flexible LED light panel delivers LED Light Therapy precisely where the practitioner needs it. It offers complete control with various application parameters such as pulse frequency, intensity, and LED light color.

- **BLUE:** for use on blemishes, psoriasis, and eczema-prone skin; helps regulate sebum production for oily skin; helps shrink the appearance of pores, exhibits antibacterial properties, calms sensitive skin and soothes inflammation.
- **RED:** increases natural hydration levels, reduces redness and inflammation, regulates oil production, improves blood circulation, helps accelerate skin repair, and is effective on rosacea-prone skin.
- **GREEN:** anti-inflammatory, soothes skin surface, treats dilated capillaries, tightens sagging skin around the eyes, and under-eye circles, improves the appearance of sunspots, and provides a brighter complexion.

\* Sold Separately





- **Purple:** combines both Red and Blue light for ultimate skin renewal and cell regeneration; promotes lymphatic drainage.
- **Yellow:** reduces melanin production; speeds up wound and ulcer healing; improves dull skin and stimulates the lymphatic system.
- **Orange:** soothes rosacea and redness; ideal for sensitive skin; accelerates metabolism and increases appetite.
- **Cyan:** reduces skin tension and swollen capillaries; calms irritated skin and enhances cell energy.

**You deserve the Best:**  
**Transform** your skin today with **CLEOPATRA.**



**CLEOPATRA**<sup>TM</sup>  
**LUX**  
FRACTIONAL BIO-INFUSION SYSTEM

**CLEOPATRA** Proprietary Technology applies a sealed vacuum system that exfoliates, evacuates all debris and impurities, infuses Advanced Bio-Active Serums under pressure, finishing with the benefits of Oxygen and LED\* Light Therapy.

## How does it work?

1

### **CUPPING MASSAGE + DETOXIFICATION**

- Relieve tension and relax the muscles to improve the effectiveness of the following treatment modalities.
- Target the lymphatic system with a massage to help drain toxins that can cause breakouts, discoloration, and uneven skin tone.

2

### **EXFOLIATION + EVACUATION**

- Extract and Purify, leaving skin radiant.
- Reveals fresh skin clarifying and evening skin tone, without irritation.
- Dead cells, dirt, and impurities are cleansed away.
- Simultaneously infuses Bio-Active Serums to target specific skin conditions.
- Exfoliation, Evacuation and Infusions of Bio-Active Serums via Vacuum Assisted Dermal Abrasion.

3

### **MICRO-CHANNELING + INFUSION**

- Innovative design that creates micro-channels, delivering Advanced Bio-Active Serums deep into the skin, creating a softer, plumper, more youthful appearance that lasts.
- The gentle pressure of the sealed Vacuum System helps deep infusion of Bio-Active Serums that hydrate and target specific skin problems.

4

### **MICRO-CURRENT FACIAL + MUSCLE RE-EDUCATION**

- Low-level microamps relax overused facial muscles and stimulate underused ones for an effective, non-invasive "facelift".
- Microcurrent waves help with deeper penetration of Bio-Active serums for improved effects and hydration.

5

### **OXYGEN-FACIAL + SOOTHING**

- Oxygen Therapy delivers oxygen directly to skin cells, promoting cell turnover and collagen synthesis. Its anti-inflammatory properties also help reduce acne and blemishes while speeding up the healing process.





# CLEOPATRA<sup>TM</sup>

## LUX

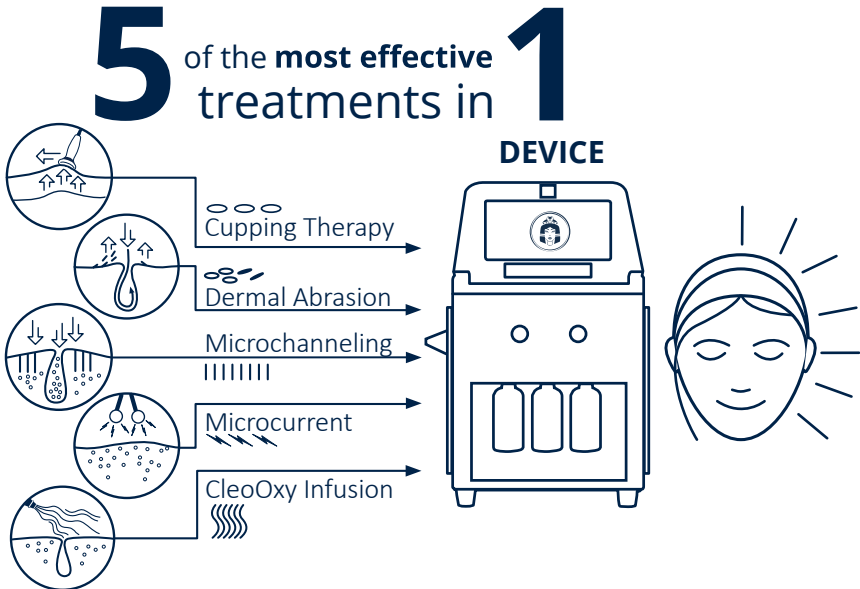
FRACTIONAL BIO-INFUSION SYSTEM

The **CLEOPATRA Fractional Bio-Infusion System** is the latest advance in skin rejuvenation using proven closed-circuit Vacuum-Assisted pressure coupled with state-of-the-art proprietary treatment heads, creating the first Bio-Stimulation Transdermal Delivery System. Designed to improve the appearance of all skin types.

**CLEOPATRA** delivers **Advanced Bio-Active Serums** deep into the skin for unsurpassed results.

## CLEOPATRA Benefits

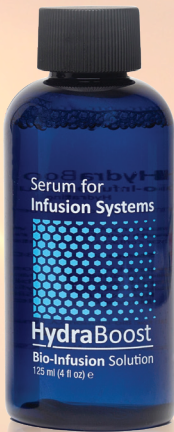
- Improves signs of aging.
- Minimize pore size and flaccidity, and help with skin tightening.
- Improves skin tone and texture, brightens dull and dry skin.
- Targets and minimizes sun spots and blemishes.
- Enhance the appearance of scars, including acne scars and stretch marks.
- Boost circulation and natural evacuation processes for skin rejuvenation.



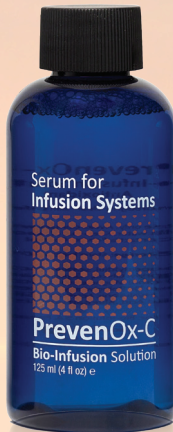
**CLEOPATRA** is the **ONLY** device combining **5 of the latest in aesthetic treatments** providing you with the **benefits of multiple technologies in one** easy session.

## CLEOPATRA uses four **Advanced Bio-Active Serums** to Trigger **cellular responses** for specific skin conditions.

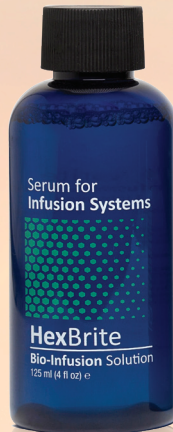
Our **Advanced Bio-Active Serums** were developed using the most advanced state-of-the-art cosmetic ingredients to provide the most amazing results possible. Our Bio-Active Ingredients are encapsulated for stable delivery and our botanical extracts are of the highest standard.



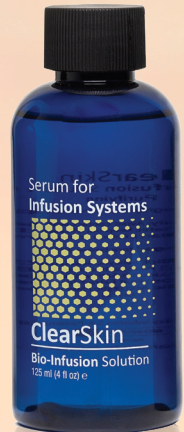
Deep  
Hydration



Powerful  
Anti-Oxidant



Sunspots and  
Uneven Tone



Blemish-Prone  
Skin

**CLEOPATRA** Fractional Bio-infusion System offers multiple treatment options for both the face and body. Whether you desire *skin clarification, hydration, brightening or anti-aging treatments*, **CLEOPATRA** can achieve your goals.

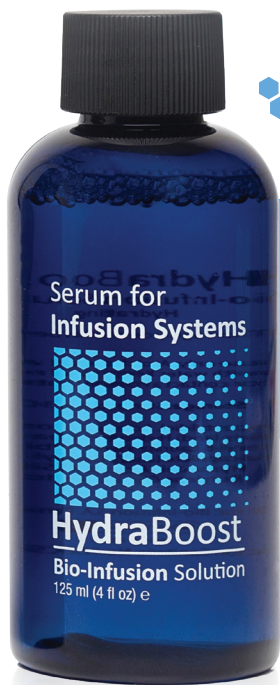


Our Advanced Bio-Active Serums are of the highest standard. Free of **Parabens, Propylene Glycol, and Fragrance.**

  
**LASERVILLE**  
Medical Equipment Trading LLC

[www.cleopatraskinhealth.com](http://www.cleopatraskinhealth.com)

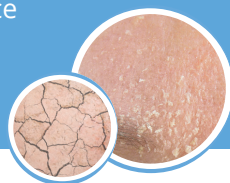




## HYDRABOOST

Biological Hydration Activator

**CLEOPATRA** uses **HydraBoost Bio-Active Serum** for deep hydration which help reduce signs of aging and bring a healthy glow back to your skin.



Fine lines and wrinkles develop not only as we age but as we increase our exposure to environmental pollutants. Delivering **HydroBoost Bio-Active Serum** through **CLEOPATRA** will leave your skin feeling deeply hydrated for a radiant glow.

### Hydrate



Silicone Encapsulated Hyaluronic Acid has a profound deep effect on the hydration of the skin leaving the skin feeling refreshed and hydrated. Improves the overall texture of the skin.

### Smooth



Glycerin and Galactoarabinan promote biological skin moisturization by a mechanism of water distribution and maintenance. Acts in the main cause of skin dryness, restoring skin barrier by stimulating cells and increases production of collagen and elastin, contributing to skin youthfulness.

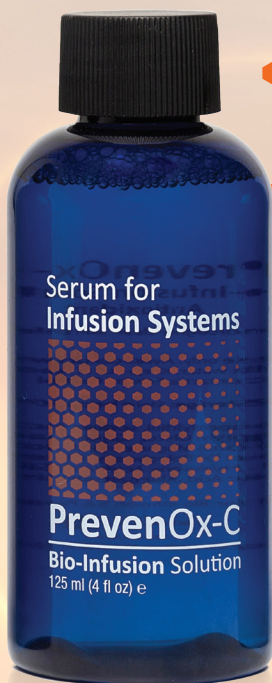
### Restore



Hydrolyzed Yeast Extract is an innovative ingredient able to restore the barrier function of the epidermis to cover tiny fissures in the skin, provide a soothing protective film and increase the water-content of the epidermis and of the dermis.

### Ingredients:

*Aqua, Isopentyldiol, Acetyl Glucosamine (and) Sodium PCA (and) Glycosphingolipids (and) Hydrolyzed Yeast Extract, Polyglyceryl-10 Oleate (and) Polyglyceryl-6 Laurate (and) Sorbitan Palmitate (and) Cetyl Phosphate, Xylityl Sesquicaprilate (and) Caprylyl Glycol, Phantenol, Glycerin (and) Galactoarabinan, Hyaluronic Acid (and) Silanetriol (and) Water (and) Butylene Glycol, Allantoin*



## PREVENOX-C

Powerful Anti-Oxidant

**CLEOPATRA** uses **PrevenOx-C Bio-Active Serum** a powerful Anti-Oxidant for aging skin to help restore the damage caused by the sun.



Environmental factors such as sun and life factors such as stress can seriously damage your skin leaving it dull and dry. **CLEOPATRA System in combination with the PrevenOx-C Bio-Active Serum** is a powerful way to rejuvenate tired and dry skin.

### Radiate



Sodium Ascorbyl Phosphate is a powerful anti-oxidant and reduces the production of melanin leaving your skin brighter and fresher.

### Calm



Nio-Kiol Salicon is not only an anti-oxidant but has powerful anti-inflammatory action which will calm the skin and reduce the redness.

### Soothe

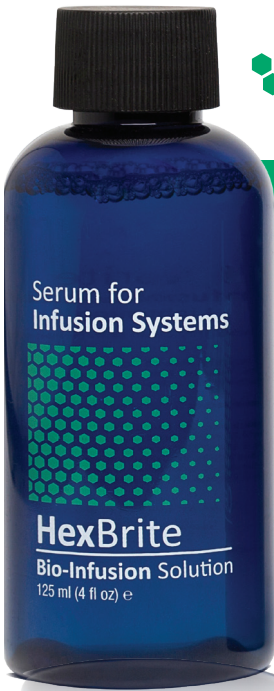


Aloe is well known for its soothing and anti-inflammatory properties, leaving your skin calmer, smoother and more refreshed.

### Ingredients:

*Aqua, Isopentyldiol, Sodium Ascorbyl Phosphate, Xylityl Sesquicaprilate, Caprylyl Glycol, Glycerin, Galactoarabinan, Salix Alba (Willow) Bark Extract, Magnolol (and) Honokiol (and) Polyglyceryl-10 Oleate (and) Apricot Kernel Oil Polyglyceryl-6 Esters (and) Sorbitan Palmitate, Sodium PCA, Hyaluronic Acid (and) Silanetriol (and) Water (and) Butylene Glycol, Citric Acid, Aloe Barbadensis Leaf Extract, Allantoin.*





## HEXBRITE

Balance and Brighten Skin Tone

**CLEOPATRA uses HexBrite Bio-Active Serum to Even-Out Skin Tone and Brighten Skin.**



Dark spots and pigmentation can affect all types of skin and ages. The overproduction of melanin in the skin causes dark spots to appear in a random fashion. Often this pigmentation is seen as the skin ages. **The CLEOPATRA system, combined with HexBrite Bio- Active Serum** will help to reduce dark spots while leaving the skin looking brighter, lighter and providing more even skin tone

### Lightening



Hexylresorcinol inhibits the production of melanin and reduces the production of dark spots.

### Brightening



Nio-Light-Malus Pumila/Citrus Hassaku/Morinda Citrifolia Extract has a depigmentation, anti-blemish and skin brightening effect.

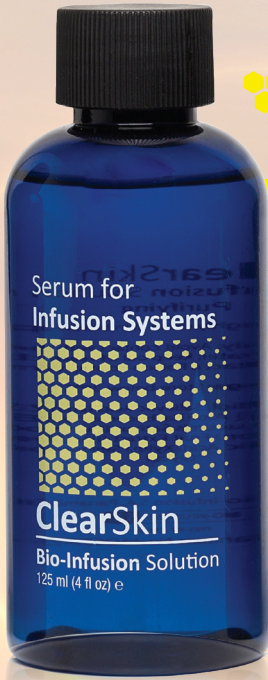
### Radiate



Ellagic Acid and Diacetylboldine have a direct effect on reducing tyrosinase production and this will reduce the production of melanin which causes dark spots on the skin.

### Ingredients:

Aqua, Polysorbate 20 (and) Hexylresorcinol (and) Caprylic Acid (and) Alcohol (and) PEG 400 (and) Caproic Acid (and) Capric Acid, Caprylic/Capric Triglyceride (and) Diacetyl Boldine, Phytic Acid, Isopentylidiol, Ellagic Acid, Phloretin, Naringin, Morinda Citrifolia Extract, Polyglyceryl-10 Laurate, Polyglyceryl-6 Oleate, Sorbitan Palmitate, Xylityl Sesquicaprilate (and) Caprylyl Glycol, Aloe Barbandensis Leaf Extract.



## CLEARSKIN

### Skin Clarifying Solution

**CLEOPATRA**  
uses **ClearSkin**  
**Bio-Active Serum**  
for Breakout Prone Skin.



Breakouts and blemishes are a chronic skin condition that affects people of all ages and skin types and can negatively impact one's quality of life. While active, inflammatory acne should be treated with the help of a doctor, **CLEOPATRA ClearSkin Bio-Active Serum** can be a helpful solution for mild breakouts when combined with Exfoliation, Extraction, Infusions, Oxygen, and Light Therapy\* to calm inflammation and help restore balance to the skin.

#### Clean



Salicylic Acid reduces the formation of comedones and is non-irritating, thereby reducing the number of acne spots.

#### Clear



Zinc Acetylmethionate is a sebum regulatory and has microbicidal action which helps to reduce the bacteria in the skin.

#### Calm



Dimethylsilanediol Salicylate has an anti-inflammatory effect so reduces the swelling of the skin.

#### Cool



Aloe, Cucumber, Hop and Lemon Extracts not only refreshes the skin but reduces the redness, has anti-septic properties and will help soothe and cool the skin.

#### Ingredients:

*Aqua, Isopentyldiol, Salicylic Acid (and) Zinc Acetylmethionate (and) Silanediol Salicylate (and) Aloe Barbadensis Leaf Extract (and) Humulus Lupulus (Hops) Extract (and) Cucumis Sativus (Cucumber) Fruit Extract (and) Citrus Medica Limonum (Lemon) Fruit Extract (and) Hydrolyzed Elastin (and) Hydrolyzed, Collagen, Salicylic Acid, Xylityl Sesquicaprilate (and) Caprylyl Glycol.*





# CLEOPATRA<sup>TM</sup> LUX

FRACTIONAL BIO-INFUSION SYSTEM



## Advanced Fractional Bio-Infusion System

A leap forward in **Skin Rejuvenation**

**CLEOPATRA Fractional Bio-infusion System** offers multiple treatment options for both the face and body, combining the most effective skin procedures in use today: Cupping + Dermabrasion + Micro-channeling + Infusion of Bio-Active Serums + Microcurrent + Oxygen Infusion + optional LED\* Light Therapy treating skin conditions such as:  
**clarification, hydration, brightening or anti-aging.**



**CLEOPATRA is a German technology utilizing  
Advanced Bio-Active Serums**



Made in Germany

**[www.cleopatraskinhealth.com](http://www.cleopatraskinhealth.com)**

  
**LASERVILLE**  
Medical Equipment Trading LLC

CLEO-16P-BRO-V1