

BRANDON

WHITTAKER

THE SLEEP THAT WAKES US

CURATED BY ALBA A. ARAÚJO



OPENING NIGHT / 02.05.26 AT 18H

GALERIA GERALDES DA SILVA



Exhibition "THE SLEEP THAT WAKES US" 2.05.26 - 20.05.26

Galeria Geraldes da Silva Rua St. Ildefonso no225/229 4000-470 Porto

Schedule Tuesday to Friday from 10am to 1pm and from 2:30pm to 6pm

Saturday 3pm to 8pm

Contact galeria.geraldes@gmail.com +351 965 270 763

BIOGRAPHY

Brandon Whittaker (b. 1989, Spokane, Washington) began his artistic practice at the age of fifteen. What started as curiosity evolved into a vital means of navigating complex emotion, trauma, and lived experience. Embracing unstructured yet intentional processes, Whittaker approaches art as both refuge and confrontation, favoring layered compositions and raw visual honesty. His work reflects an ongoing pursuit of authenticity amid internal and external noise, engaging vulnerability without compromise. Each canvas serves as a site of reckoning, release, and resilience, balancing emotional intensity with deliberate structure. Over time, his technique has developed beyond the physical into an emotionally driven practice. Whittaker's work seeks to connect with viewers who recognize their own experiences within his exploration of human fragility and strength.

BRANDON
WHITTAKER
b.1989
Washington, United States
Lives and works in Porto,
Portugal



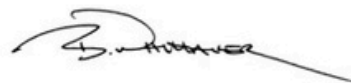
I started showing an interest in the arts as I was enrolled in my first theatre class.

Un-extraordinarily it progressed extraordinarily to 8 years of classical ballet, special effects and makeup courses. While landing at 15 years of age in the fascinating world of paints, mediums and countless abused and disrespected quality paint brushes.

The black sheep of the family and baptized in depression, in my search for an authentic way to express complex juvenile emotions and experiences - I found my savior. I found what saves lives. I found art. So began the beautiful torment and brutal monsoon of overpriced art supplies. Beautiful unstructured chaos.

This place I find myself in is foreign yet predictable. Exciting but numbing. Assuming the risk to be myself as an artist without lending an ear to uninvited or distracting voices has been nothing more than humbling, confirming and evolving. This is me. My thoughts and worries. Trauma and rejoice. This is my revelation within the walls of my minds church.

I hope my art reaches who needs to see it. Feel it or rage with it. I hope it can continue to pay the debts of unscheduled therapy sessions. I hope it helps to save the isolated when the silence is deafening. One blank canvas after another, layered with angst and victories - making sense of a juxtaposed existence. Finding lucid moments, at times, within a seemingly ever growing somber world.

A handwritten signature in black ink, appearing to be 'B. Rivera', with a long horizontal line extending to the right.

FROM THE ARTIST



NEW

SERIES:

THE SLEEP THAT WAKES US

d: 168cm x 168cm

series: the sleep
that wakes us

medium:

Watercolor,
Acrylic, Oil Pastel
and Charcoal on
Gesso Canvas

Scary little monsters so
big and invisible
yet fraught with strange
ideas

You continue to arrive
uninvited
to wreak havoc in my
thoughts

Sometimes inspiring but
other times
making my insides feel
like rot

You try to steal the
spotlight from the only
rest I've got

What is it that you want
from me
I'm waiting for this
lesson

I can assure you I stand
unshakable in my
convictions
of who I am and who I'm
not

But if you must
continue, please stay
beneath the bed

I'm the one who has to
pay
the price

Confusing thoughts
swirling throughout my
head

U N D E R T H E B E D





THE TWO REALMS

As we drift into our nightly slumbers we move from one realm into the next. From the realm of tangible reality, where everything makes sense because we are told it is so. From our daily waking experience where strict guides and protocols dominate our trajectory.

When we cross this golden threshold into the sleeping realm where dreams run with wild abandon and challenge us to question validity and reality. This nightly journey to the deepest corners of our mind and consciousness spills over into our waking life, giving us daily signs and answers to our questions.

This of course if we are only so bold to explore and be curious. To break free from the script provided by societies directors.

d: 168 cm x
168 cm
series: the
sleep that wakes
us
medium:
watercolor,
acrylic, oil
pastel, charcoal
and gold leaf on
canvas



SPIRIT GUIDE BROTHER

d: 84cm x 84cm

series: the sleep
that wakes us

medium:

watercolor, acrylic,
oil pastel, charcoal
and gold leaf on
canvas

Brother, can you hear me. I see
you weaving the safety net to
catch my fall.

You guide from a place of
gentle purpose and questions
filled with validity.

Encouraging to lead with
bravery in opening this eager
heart, ready to learn and live a
life worth living.

Pushing me to get "doing" and
trust this internal wisdom
burning with truth and trust in
what cannot be measured by a
list of monetary checkpoints.

Spirit Guide Brother, strength,
courage and energetic
convictions.



SPIRIT GUIDE SISTER

Sister, its me.
I feel you most impressively.
Coursing through my mind
and soul, pumping creativity
and vital healing.
The divine feminine of the
highest power.

Bravery and strength in
finding answers from a place
of nurturing and cosmic
intuition.

Spirit Guide Sister, lover, artist,
visionary of what could be so
beautiful.

d: 84cm x 84cm
series: the sleep
that wakes us

medium:
watercolor,
acrylic, oil pastel,
charcoal and gold
leaf on canvas



I CANT SLEEP

d: 84cm x 84cm
series: the sleep
that wakes us
medium:
watercolor, acrylic,
oil pastel, charcoal
and gold leaf on
canvas

There's no peace in this
place.
Pieces of last ditch efforts
stuffed into my ears
Squeezing my brain from
both sides
Silence, Calm, is that you
lurking within the blots of
ink?

Remember when the
silence was deafening and
sleep came like a golden
comet?

Im waiting for you, sleep.

Pretending to not be
awake as to not scare you
away.



KEEPER OF DREAMS

You are as vibrant and powerful as the dreams you dream.

Entering into slumber, I come from the highest place of love and compassion

I am the keeper of my dreams

Waking eyes full of curiosity and ability to move between time and space

To inspire ones self and be the judge of what will be reality

Sometimes silently, sometimes in proclamation
YOU are the keeper of your dreams.

d: 84cm x 84cm

series: the sleep that wakes us

medium:
watercolor,
acrylic, oil pastel,
charcoal and gold
leaf on canvas



FALLING

d: 168cm x 72cm

series: the sleep that
wakes us

medium:

watercolor, acrylic, oil
pastel, charcoal and
gold leaf on canvas

These cliffs to nowhere
Far below
Falling fast from the clouds
To awake before impact
Take pause and look within
The gold veins of hope are
chasing close behind
Its not all so scary



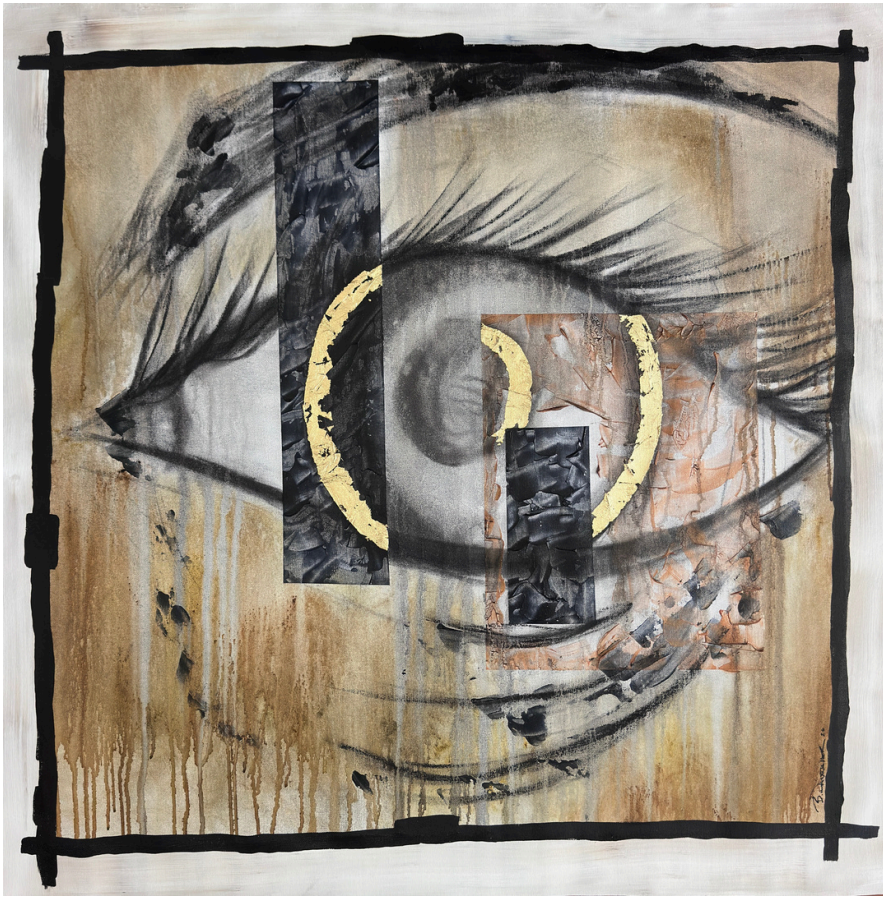
LUCID AZUL

d: 102cm x 53cm
each

series: the sleep
that wakes us

medium:
watercolor,
acrylic, oil pastel,
foil paper, gold
leaf and charcoal
on canvas

Comfort within discomfort
Calming pools of blue structure
I am here and also there
Patiently waiting to take control
Gathering and growing
One lesson for each box
I draw the walls around me
Hope ready to explode



W I D E A W A K E

Pull the wool over my eyes
Try they might
Seeing is believing
Experiencing is existing
Wide awake not ashamed
Not scared
But Empowered
Growing ever more content
Experiencing this life in
greater clarity
Seeing what can't be viewed

d: 84cm x 84cm
series: the sleep
that wakes us
medium:
watercolor,
acrylic, oil
pastel, gold leaf,
and charcoal on
canvas



A conversatoin starter that also serves a purpose. I love burning incense and this visual piece proves form follows function while collecting the ashes as they drop vertically into the vessel below.

INCENSE BURNER

d: 12cm x 46cm x 10cm

series: the sleep that wakes us

medium:

paper maché and plaster on recycled glass bottle, wood and watercolor, acrylic, copper soldering tape, embroidery thread and brass ring

OTHER WORKS:



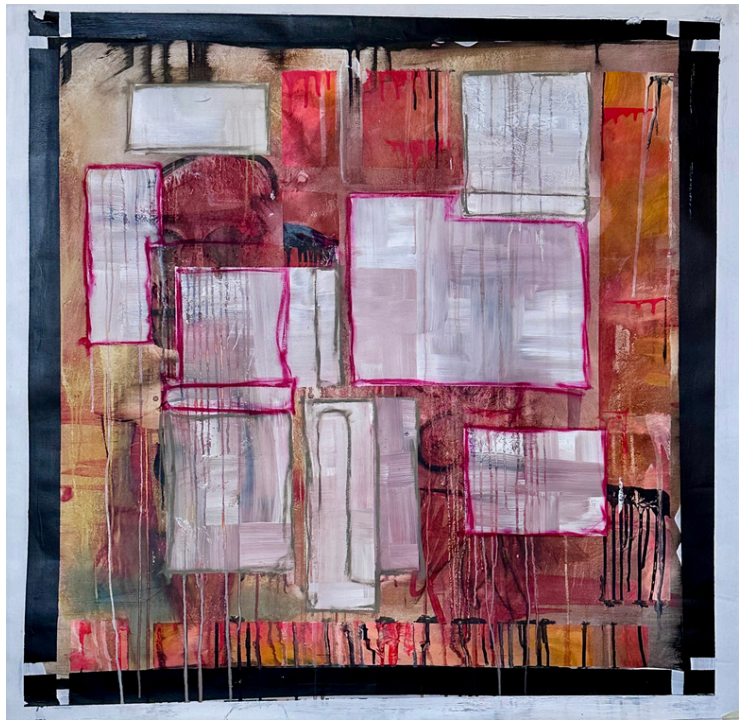
THE WATCHERS

Started in 2017, with 4 different finished layers. This piece has been an evolution. From the original self portrait to the final stage - this piece showcases the many chapters of the past 8 years. Watching, studying and adapting this piece is considered to be a labor of love disguised within a love hate relationship. The Watchers peer from behind the scenes. No one knows who they are - but they have been with us from the beginning. Peering into the observers space from a complex, layered script. Where are we going and who is watching?

d: 165cm x 145cm

series: lucid in a
somber world

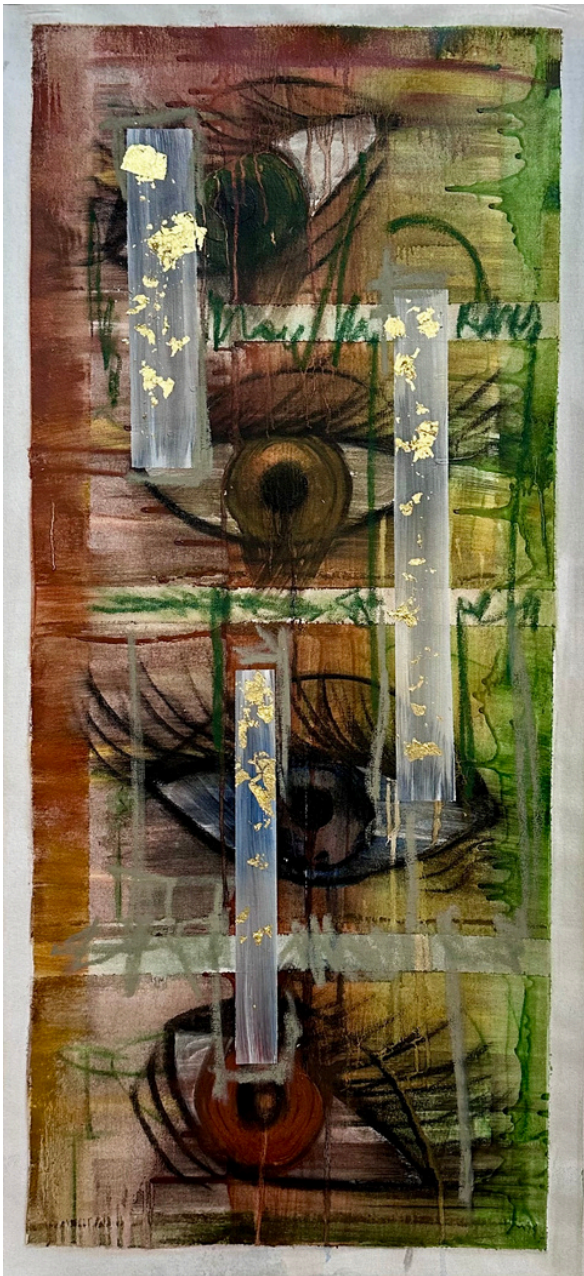
medium:
acrylic, charcoal, oil
pastel, Japanese
calligraphy ink,
gold foil on raw un-
stretched canvas



THE SORTING ROOM

d: 107cm x 107cm
series: lucid in a
somber world
medium:
watercolor, acrylic,
charcoal and oil
pastel on un-
stretched canvas

When we compartmentalize our emotions, trials, confusions and disbelief - we create a process in which we organize and prioritize. Our hurt, pain and confusion, our responses to the world around us find temporary solace in these small boxes. This small room where we attempt to sort through what gets archived and what gets put on display. What is sold and what is traded.



BIG BROTHER

Always watching.
Watching each
other while being
watched. Freely
selling our daily
routines and
personal insights.
Poor we are while
we make them rich.

d: 48cm x 105cm
series: lucid in a
somber world

medium:
watercolor, acrylic,
charcoal, oil pastel
and gold leaf on un-
stretched canvas



PASSION AND RAGE

d: 62cm x 106cm

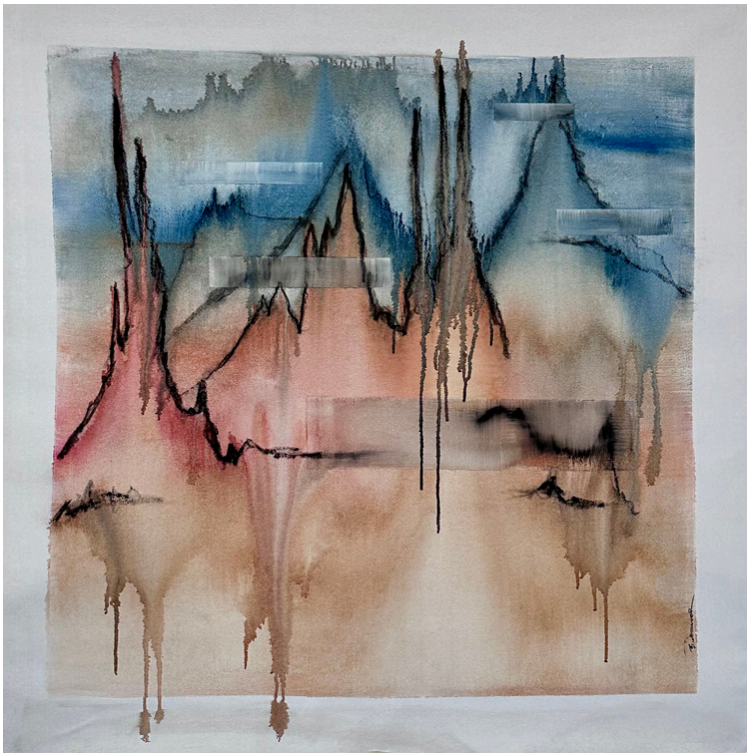
series: lucid in a
somber world

medium:

watercolor, acrylic,
charcoal, oil pastel
and gold leaf on
un-stretched canvas

Passion - often confused or walking
the fine line of Rage. To balance the
beauty that is hidden in Passion
against the overwhelming urge to
Rage at those who don't see it from
your perspective. The crimson line
running between the both.

Especially in this world we all
struggle through today. Finding
Passion and learning to craft Rage
into something understandable.
Relatable. Worldly. Mind over heart
or heart over mind?



SCALING PEAKS

Steep peaks and sweeping valleys. Clouds of censorship - everything bleeds together to create one dreamy slumber it feels like these days. A place where panic dissipates into a numb, tranquil slow motion. Taking in the expanse of it all. One headline at a time.

d: 107cm x 107cm

series: lucid in a somber world

medium:
watercolor, acrylic,
charcoal and oil
pastel on un-
stretched canvas

B R A N D O N

WHITTAKER

THE SLEEP THAT WAKES US



WHITTAKER
CONTEMPORARY