

The Wallpaper Edit

www.thewallpaperedit.com

Peel & Stick Wallpaper hanging guide

Before

First, check if the material is received in good order and has not been damaged in transport. Remove all old wallpaper, paint or whitewash, and traces of inks or crayon from walls. Make sure the walls and/or boards are smooth, solid, dry, and free of mold or algae.

Please ensure that any dark spots on your wall are covered before applying our self-adhesive wallpaper, as it is not completely opaque and these areas may be visible through the paper.

⚠ If you have freshly painted your walls we suggest not to hang the wallpaper for at least 2 weeks to ensure the paint has dried completely, so your freshly installed wallpaper wouldn't peel off of the wall on the next day.

Tools



Level



Squeegee



Utility knife



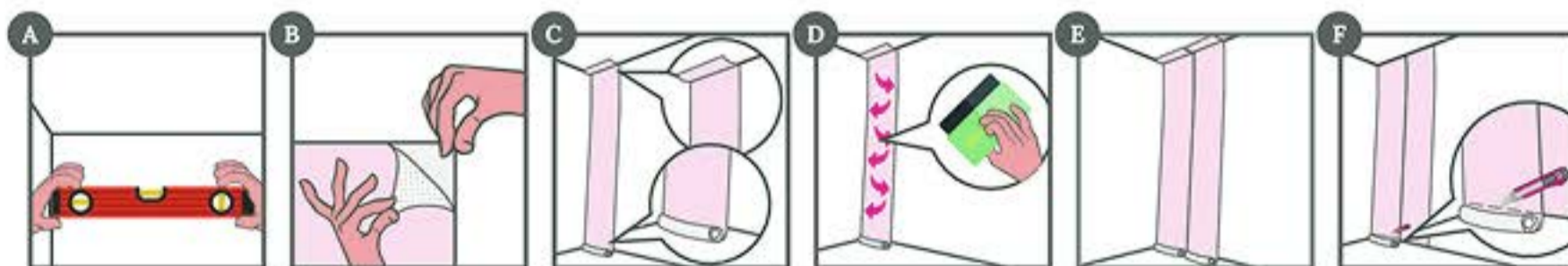
Measuring tape



Scissors

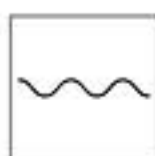
Hanging

1. When you have unpacked your wallpaper, we suggest to unroll the panels & let them stretch for at least an hour to ease the installation process, that is, if you have a floor space that allows it.
2. Now that it's time to start the wallpaper install, find a level spot **A** on the left side of your wall. The level spot is necessary to ensure the wallpaper suddenly wouldn't start to lean upwards or downwards, as usually ceilings and walls aren't 100% straight and it's quite hard to notice it with a naked eye.
3. Pull back approximately 10 inches (25cm **B**) of the backing paper from the top of the panel for an easier start.
4. Apply the first panel starting from the top **C** and removing backing paper gradually as you go. Don't pull off all the backing paper at once, because the back of the wallpaper will stick to itself.
5. You can use a squeegee (with round angles) or another smoothing tool to smooth out the wallpaper & remove any air bubbles that may form **D**. When you have completed the first panel, continue to the next panel **E**.
6. When all the panels are in place, cut off the excess material **F** from the top/bottom of the wall as well as electrical sockets, etc.
7. When finished give it a brief smoothing once more to ensure it has stuck properly to the wall surface. We also suggest repeating this step after a week or so.

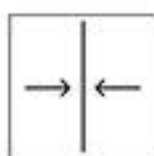


Removal

Start at the top corner and gently pull firmly, evenly, and very slowly, working parallel to the surface. Be careful not to overstretch the material. If you encounter resistance it is recommended to heat the area with a regular blow dryer on the **HOT** setting to weaken the adhesive and easily remove from the surface.



Spongeable



Straight match