

Pearl Sea Caves
Villa 8

Description

Pearl Sea Caves is a prestigious and award-winning development of luxury villas located in the serene and unspoiled region of Sea Caves, Paphos. It is only a short distance from the Akamas National Park and is surrounded by olive trees and natural beauty. With breathtaking views of the Mediterranean, this development is situated in one of the most picturesque areas of Paphos.

The development is just a 10-minute drive away from the charming St George fishing harbor and its stunning beach cove. It is also just a 5-minute drive from the famous Corel Bay Beach, which has been awarded a blue flag, as well as from the small town's bars, restaurants, and shops.

Just as pearls are highly valued for their beauty and rarity, this development, with its proximity to renowned landmarks and breathtaking views, is truly a pearl of the Mediterranean.



The 3D images provided are samples from a specific project.



amenities



Beach
2.5 km



Restaurant
800 m



Education
2.4 km



Hotels
1.7 km



Supermarket
2.6 km



Pharmacy
3.5 km



Medical Care
3 km



ATM
2.5 km



Airport
31 km



Kiosk
2 km



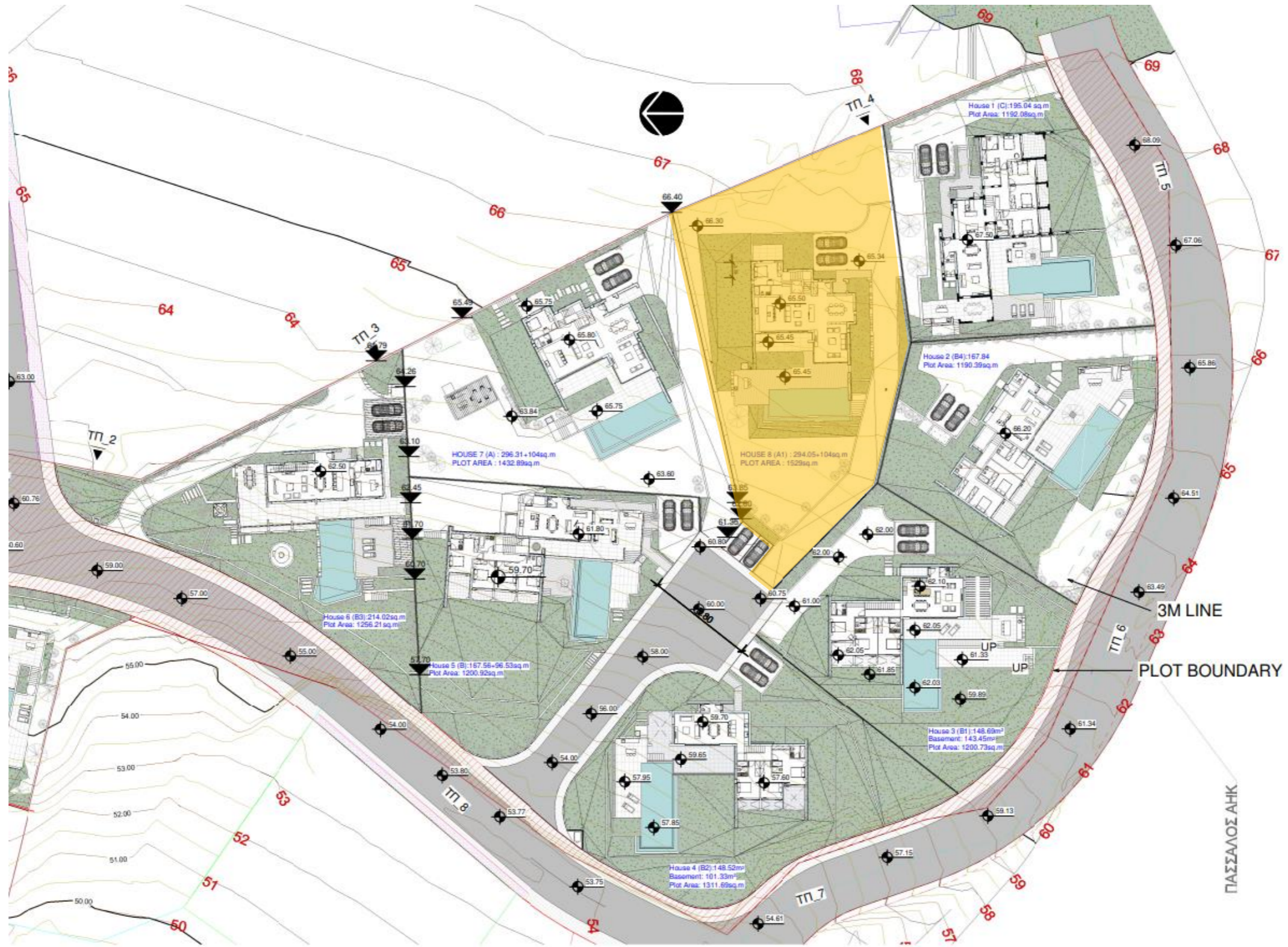
Click the pin
for directions



Plot Area	1529 m2
Covered Internal Area	294.05 m2
Basement	104 m2
Covered Veranda	94.24 m2
Uncovered Veranda	91.25 m2
Swimming Pool	Yes
Parking Space	2
Bedrooms	6
Bathroom	6

The 3D images provided are samples from a specific project.

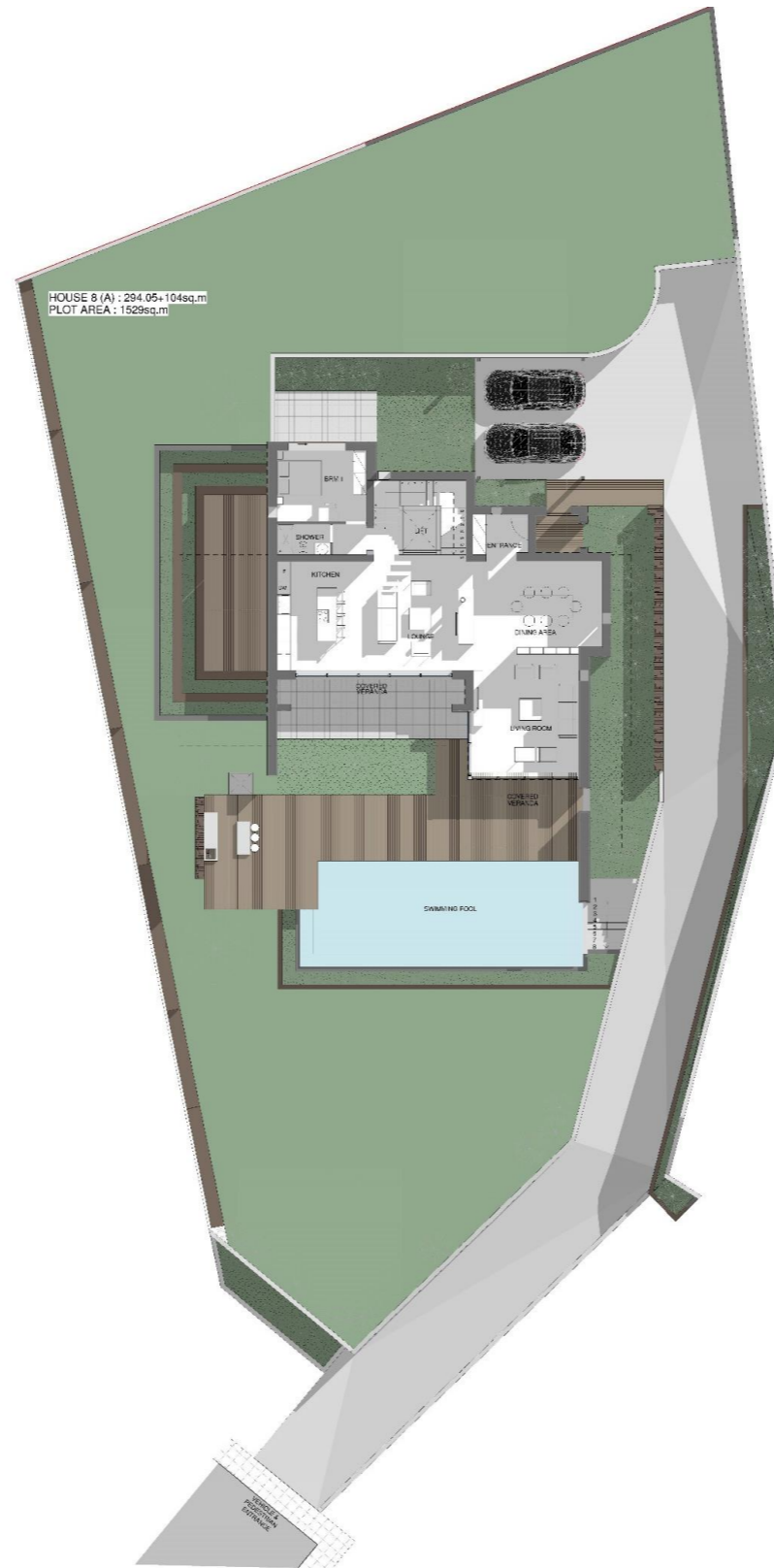
Master Plan



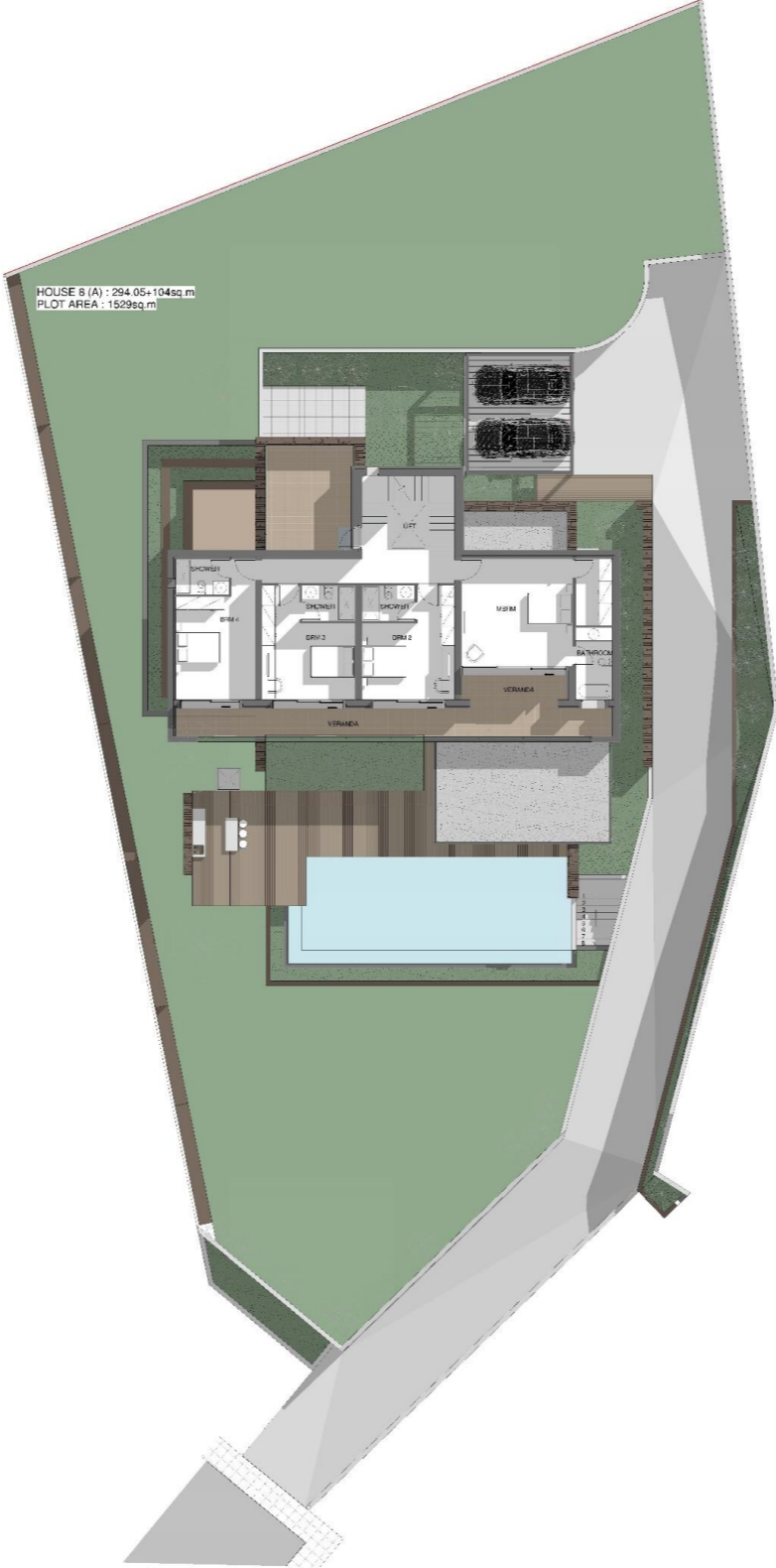
Basement



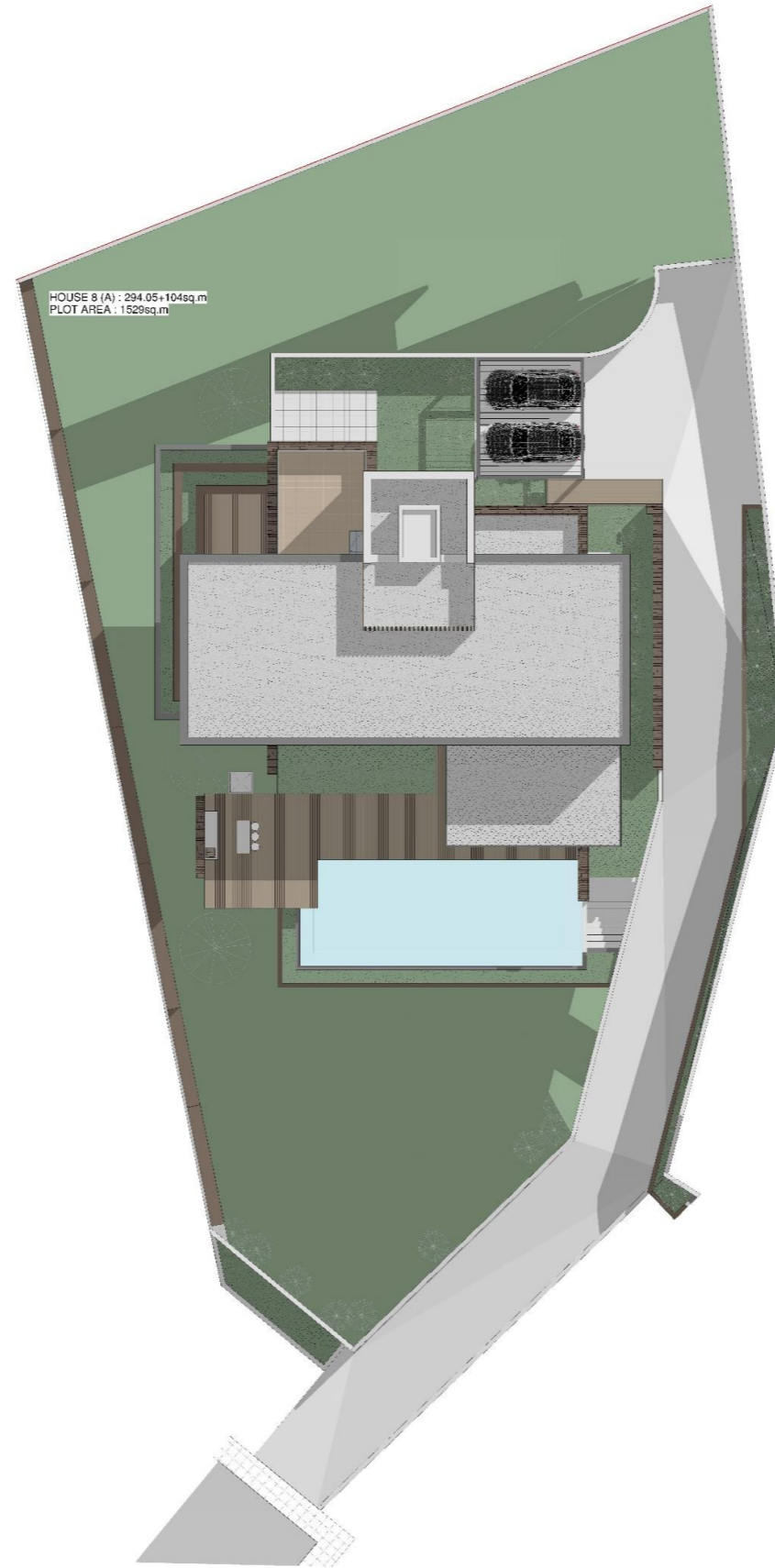
Ground Floor



First Floor



Roof Plan



Elevations



Elevations



3D Views | Exterior



The 3D images provided are samples from a specific project.

3D Views | Exterior



The 3D images provided are samples from a specific project.

3D Views | Exterior



The 3D images provided are samples from a specific project.

3D Views | Exterior



The 3D images provided are samples from a specific project.

3D Views | Exterior



The 3D images provided are samples from a specific project.

3D Views | Interior



The 3D images provided are samples from a specific project.

3D Views | Interior



The 3D images provided are samples from a specific project.

3D Views | Interior



The 3D images provided are samples from a specific project.

3D Views | Interior



The 3D images provided are samples from a specific project.



External Finishes

Traditional stone cladding, wood cladding and fair face concrete
High-Quality Ceramic tiles on verandas and balconies
Large overflow swimming pool
High-Quality swimming pool tiles
Swimming pool surrounded by ceramic tile
Custom BBQ area (optional)
Landscaped lush garden with irrigation system
Spacious double - parking area
Balustrade of laminated Glass

Internal Finishes

Solid iroko wood entrance door
Imported marble on floors, stairs and bathrooms
Designer kitchen
Quality veneered wooden
Cupboards doors and wardrobes
Granite kitchen worktops
Natural solid oak wood parquet floor in bedrooms
Double glazed windows with aluminum frames
Hansgrohe mixers
Duravit toilets with wall-mounted geberit flush system
Under floor heating (heat pump operated)
Fully air-conditioning- VRV system

Other Finishes

Smart house – lighting system, blinds or curtains
Solar system for heating water
Pressurized water system
Fully loaded package – (optional – extra cost)
Energy efficiency – B