

# **Cityscape Residences**

# Description

Introducing our new project, ideally situated in the vibrant heart of Paphos, offering unparalleled convenience and access to essential amenities. This development comprises a total of 12 meticulously designed apartments, catering to various needs with four spacious 2-bedroom apartments and eight stylish 1-bedroom units.

**Location:**  
Nestled in the bustling city center, this project places you at the epicenter of urban living. You'll find yourself just moments away from the city's key attractions, including shops, restaurants, entertainment, and more. The convenience of city life is at your doorstep.

**Apartments:**  
**2-Bedroom Units:** These generous living spaces are perfect for families or those desiring extra room. With two bedrooms, they provide ample space for comfort and flexibility.  
**1-Bedroom Units:** These well-appointed apartments are an excellent choice for singles or couples. They offer a cozy and inviting living environment.

**Features:**  
Each apartment is thoughtfully designed to maximize space and comfort. You'll find high-quality finishes, modern amenities, and an abundance of natural light. This project exemplifies the perfect blend of contemporary design and urban living.

If you're looking for a stylish and convenient lifestyle in the heart of Paphos, our new project is the answer.



*The 3D images provided are samples and do not represent the final result of the project.*





## Amenities - light



**Beach**  
3.5 km



**Restaurant**  
150 m



**Education**  
450 m



**Hotels**  
1.3 km



**Supermarket**  
1 km



**Pharmacy**  
100 m



**Medical Care**  
300 m



**ATM**  
450 m



**Airport**  
15 km



**Kiosk**  
400 m



*Click the pin for directions*



# Specifications



Plot Area	532 m2
Floor Levels	4
Covered Internal Area	101, 201, 301, 401   50 m2
	102, 202, 302, 402   50 m2
	103, 203, 303, 403   77 m2
Covered Veranda	101, 201, 301, 401   11 m2
	102, 202, 302, 402   4 m2
	103, 203, 303, 403   9 m2
Parking Space	Allocated
Bedrooms	101, 201, 301, 401   1 m2
	102, 202, 302, 402   1 m2
	103, 203, 303, 403   2 m2
Bathroom	101, 201, 301, 401   1 m2
	102, 202, 302, 402   1 m2
	103, 203, 303, 403   2 m2





## 3D Views Exterior

*The 3D images provided are samples and do not represent the final result of the project.*



# 3D Views Exterior

*The 3D images provided are samples and do not represent the final result of the project.*







## 3D Views Exterior

*The 3D images provided are samples and do not represent the final result of the project.*



# 3D Views Exterior

*The 3D images provided are samples and do not represent the final result of the project.*







# 3D Views Interior

1-Bed Apt

*The 3D images provided are samples and do not represent the final result of the project.*



# 3D Views Interior

## 1-Bed Apt

*The 3D images provided are samples and do not represent the final result of the project.*







# 3D Views Interior

2-Bed Apt

*The 3D images provided are samples and do not represent the final result of the project.*



# 3D Views Interior

## 2-Bed Apt

*The 3D images provided are samples and do not represent the final result of the project.*



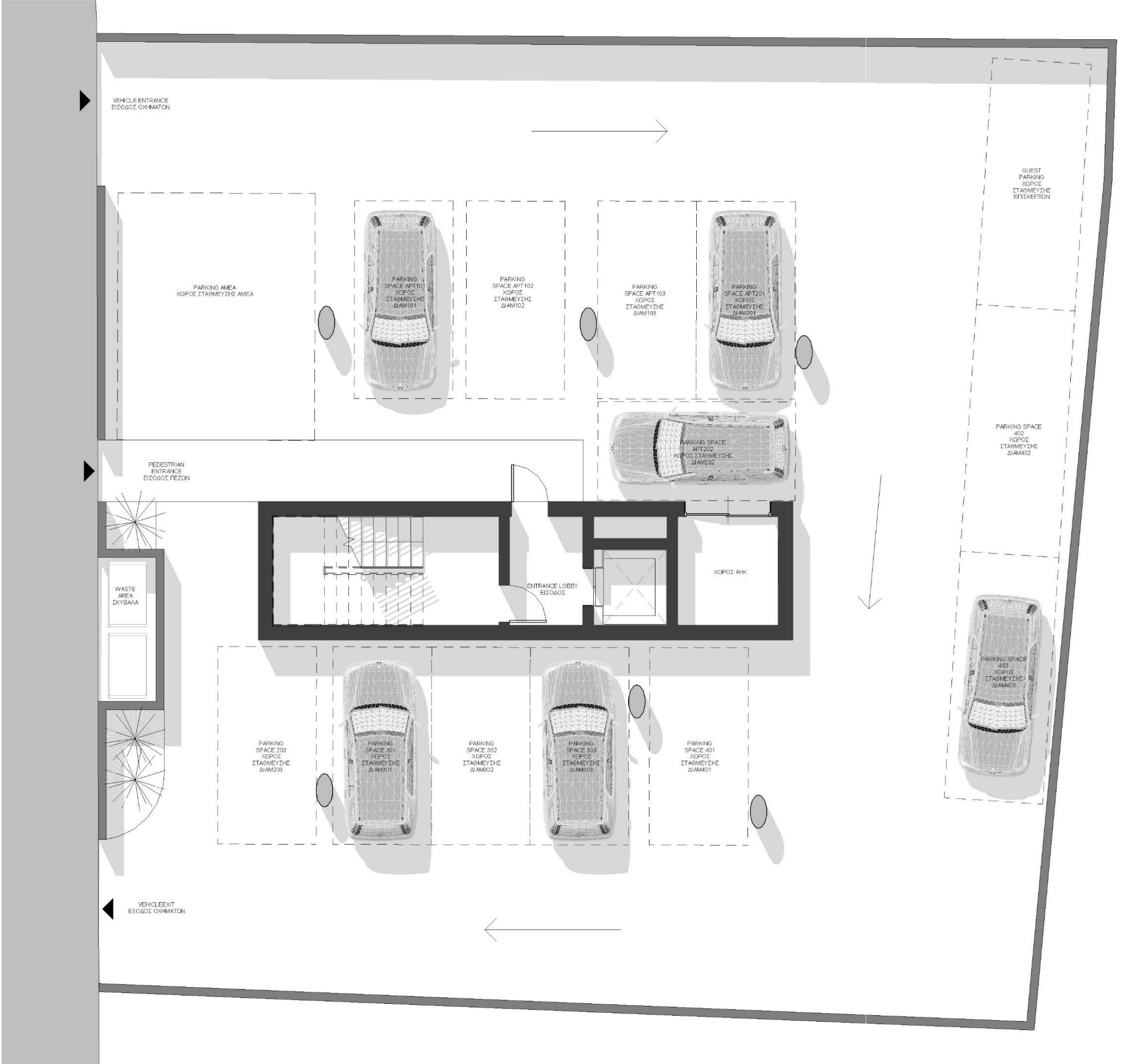




## 3D Views Interior

*The 3D images provided are samples and do not represent the final result of the project.*





Ground Floor





## First Floor





## Second Floor





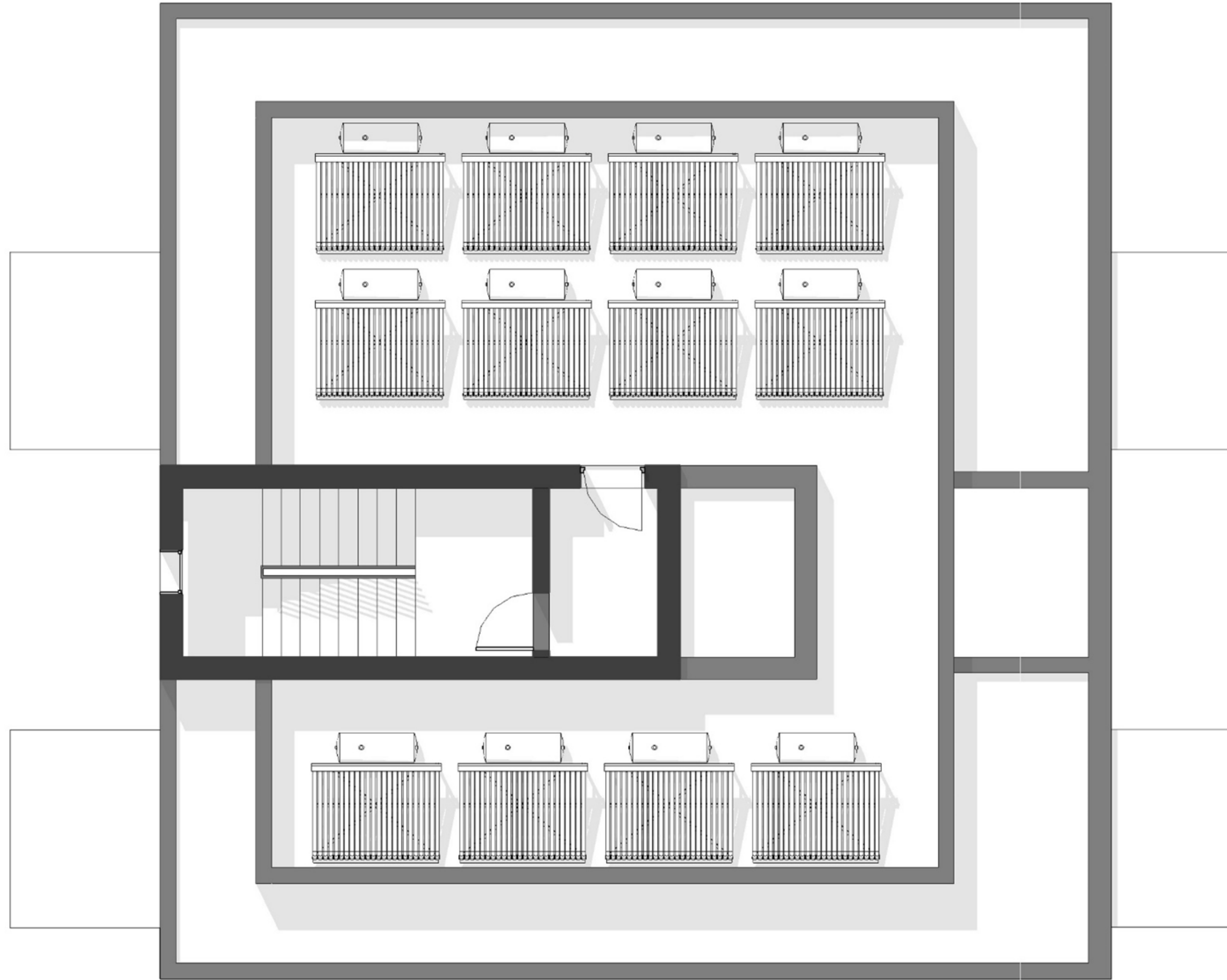
## Third Floor





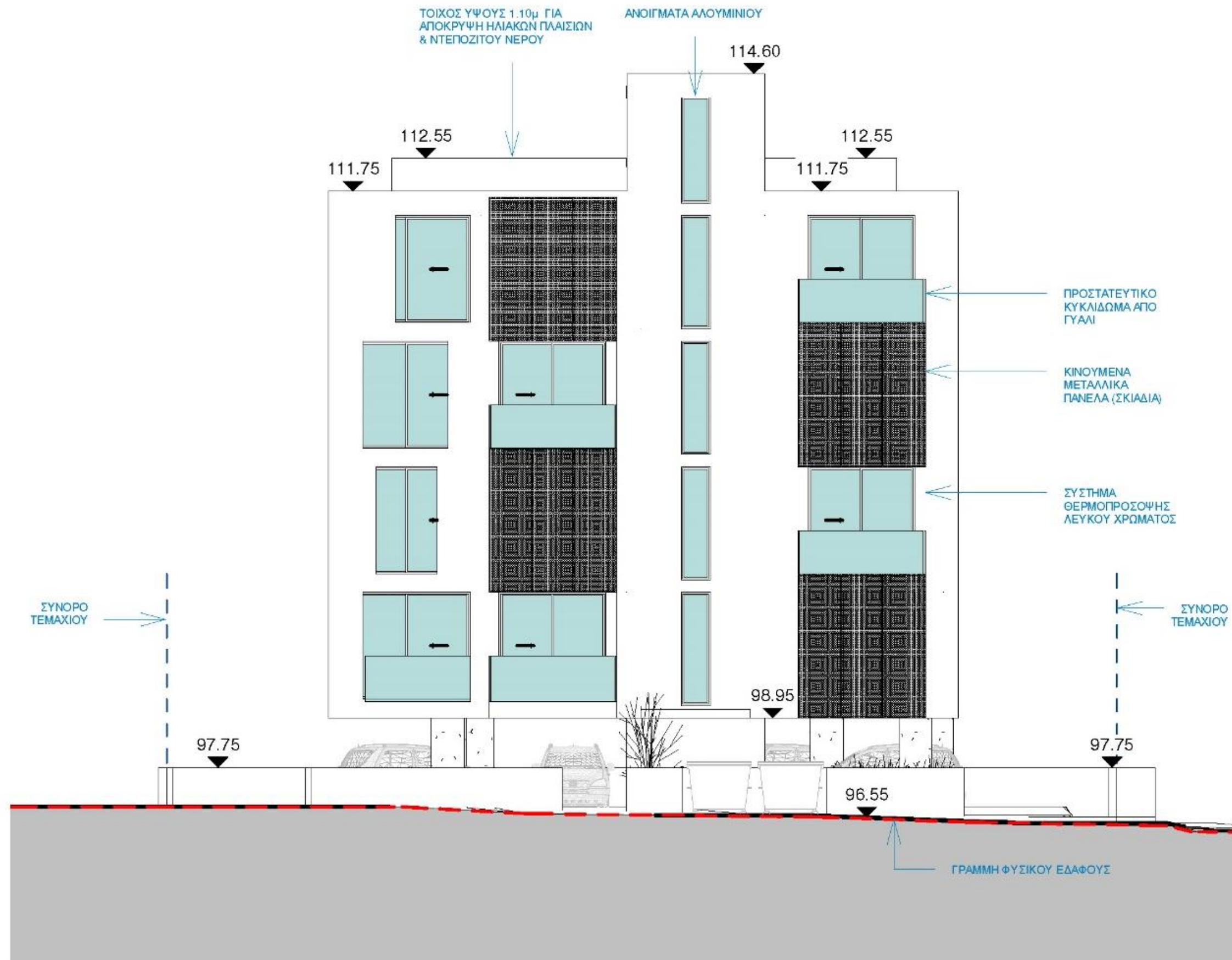
## Fourth Floor





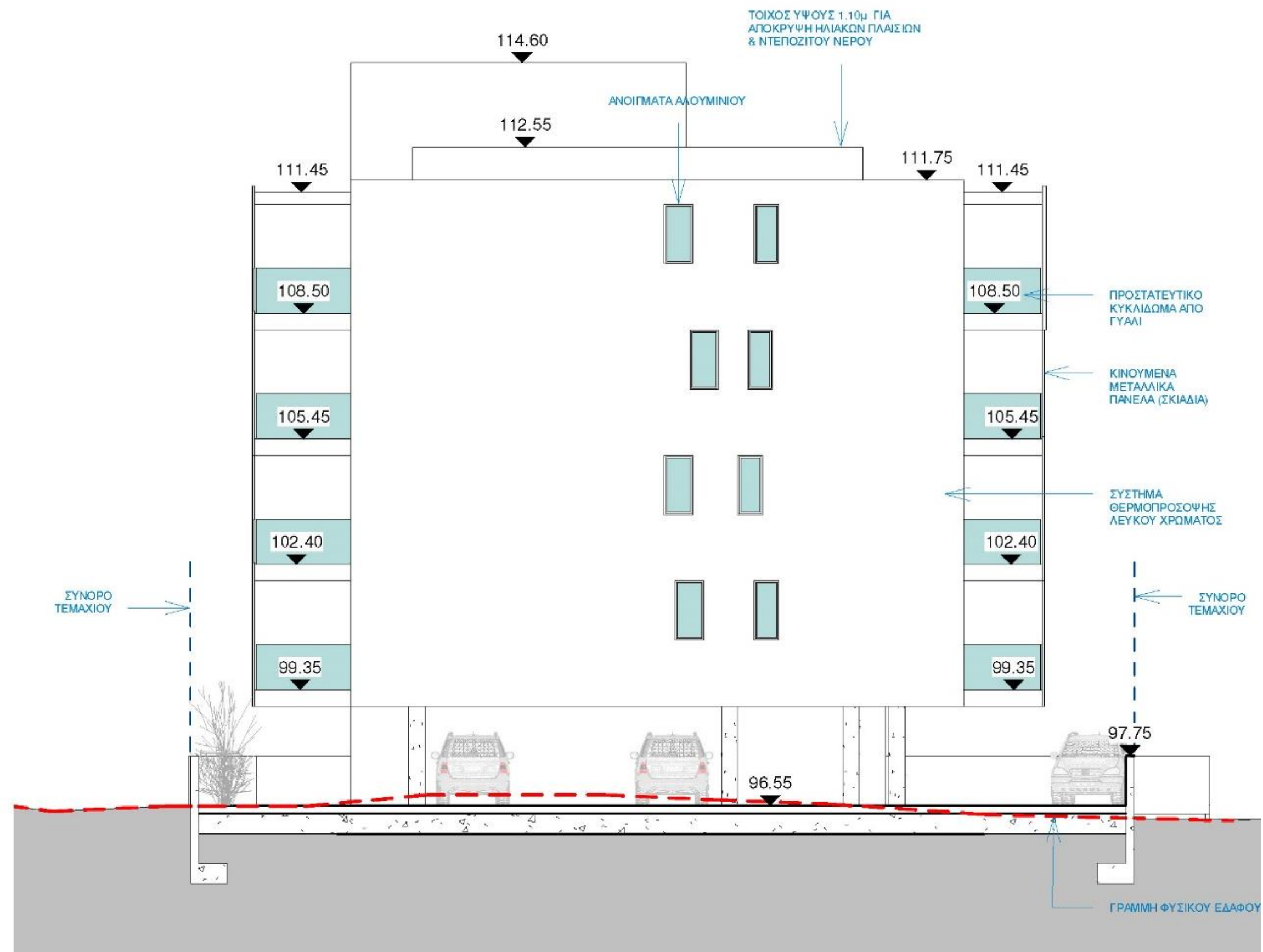
**Roof Plan**





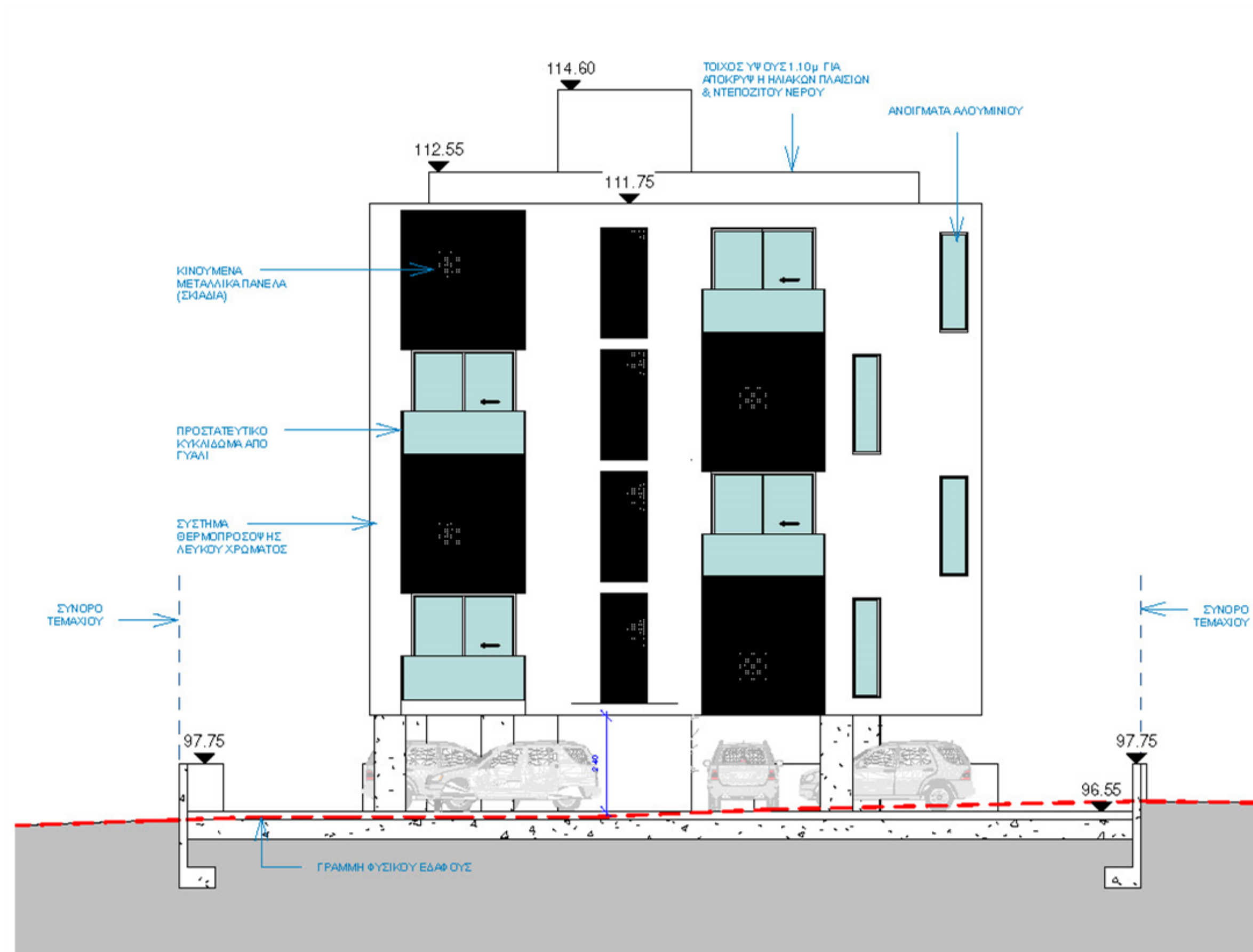
**Northwest  
Elevation**



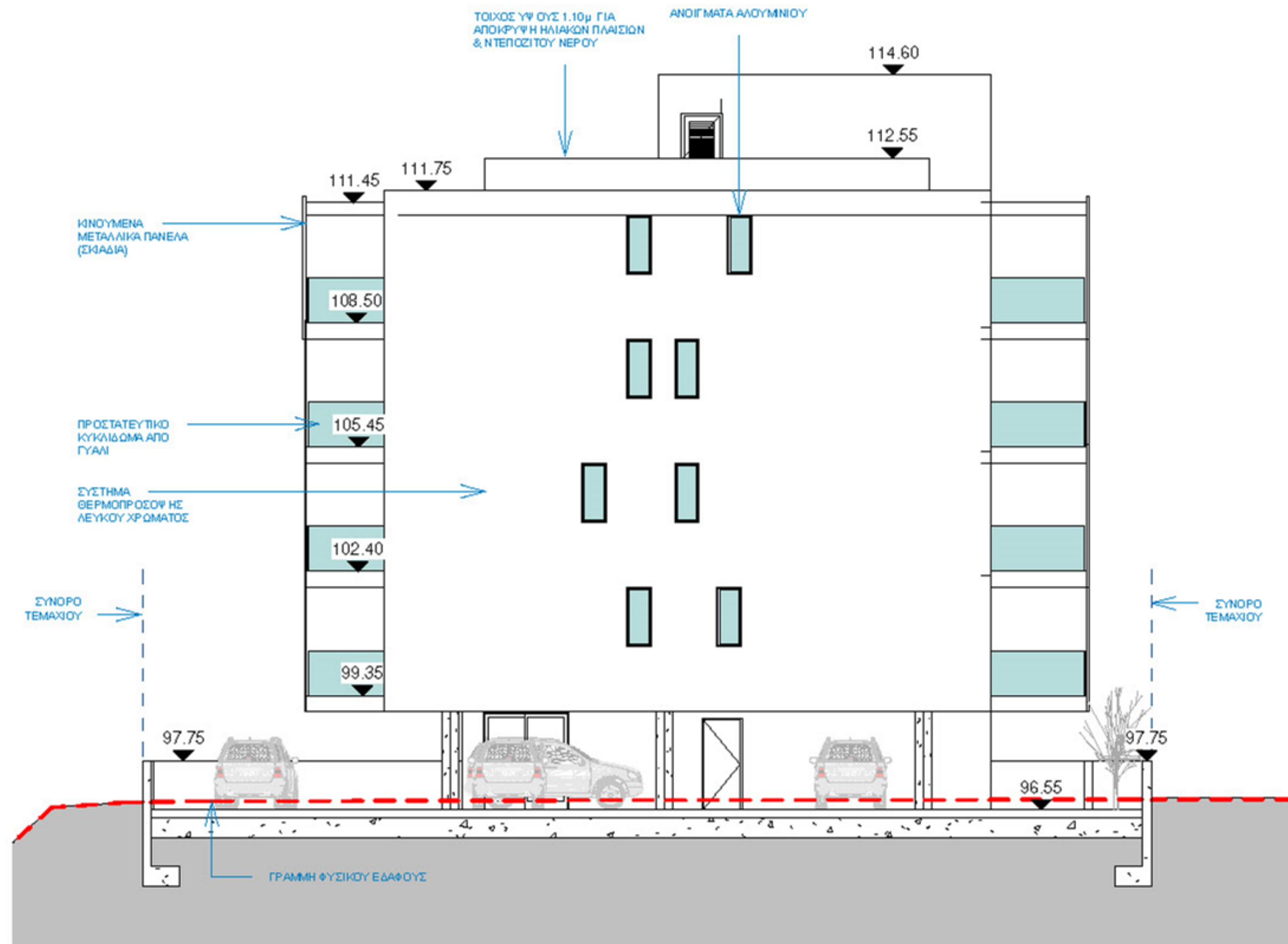


Southwest  
Elevation





**Southeast  
Elevation**



**Northeast  
Elevation**