



PXW-Z200



Shoot, record and stream in 4K HDR, with a 20x optical zoom, AI-powered Subject Recognition AF, integrated 2.4 GHz / 5 GHz* Wi-Fi and 12G-SDI connectivity.

** 5 GHz communication may be restricted in some countries and regions.*



Contact us

Export PDF



Ver.2.0 features

Additional Support for Recording Formats

- MXF (including 1920 x 1080 interlace)
- MPEG HD422 Upgrade License
- Interval Rec
- Picture Cache Rec

Lens Feature

- IRIS Assignment to lens ring
- Digital Extender
- Auto Flange Back Adjust

Image Quality Features

- Paint and Look in one Scene File to easily share
- Soft Skin Effect

Usability

- Cropping and Framing Feature
- Support for Monitor & Control Ver.2.3

Network Features

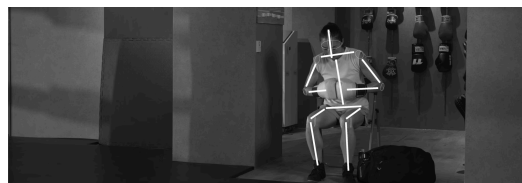
- UVC (USB Video Class)
- Network UX simplified



Crisp details and vivid colors, every time

Capture stunning 4K HDR footage, with colors, textures and details that stand out. The Z200's powerful 1.0-type Exmor RS™ stacked CMOS sensor delivers images with high sensitivity and low noise, at up to 120fps* in 4K, 240fps in FHD. Preserve every detail with full-pixel readout and real time BIONZ XR™ image processing, while compatibility with 709tone and S-Cinetone™ makes color matching to Cinema Line and Sony system cameras easy.

** With approx. 23% crop. Please refer to Operating Instructions for minimum memory card requirements to ensure correct operation.*



Intelligent features for smarter shooting

Depend on Sony innovations that help you to capture the best content possible. Our advanced AI Processing Unit can recognize human subjects, while the Fast Hybrid AF system tracks your subject and maintains precise focus at all times. An Electronic Variable ND Filter means you can achieve the best exposure for your shots, in a wide range of lighting conditions, or the Auto ND function will automatically set optimal exposure for you.



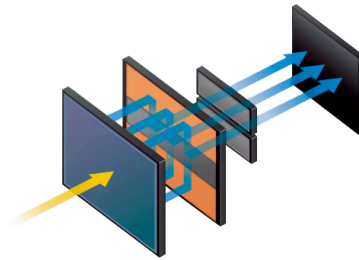
Reliable streaming and broadcast TV friendly connectivity

Built-in 2.4 GHz and 5 GHz* Wi-Fi – in concert with our C3 Portal (paid) or XDCAM Pocket apps – powers simple, high-quality streaming direct from the camera. Remote operation via our Monitor & Control** app allows you to check angles and monitor shooting from your smartphone or tablet. The Z200 also offers built-in 12G-SDI with four times the bandwidth of 3G-SDI over a single cable, TC input/output and broadcast friendly XAVC (MXF).

** 5 GHz communication may be restricted in some countries and regions.*

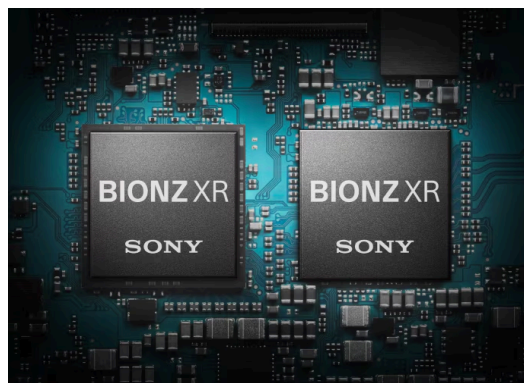
*** Monitor & Control is available from the Google Play Store and the Apple App Store, free of charge.*

1.0-type Exmor RS CMOS sensor



For imaging performance otherwise unobtainable for a compact camcorder, the Z200 relies upon a large approx. 14.0 megapixel (effective) 1.0-type Exmor RS CMOS image sensor. Its unique stacked structure – with back illuminated pixels layered over integrated signal processing circuits – enables both faster read-out speeds and superior low-light performance due to more light reaching the sensor.

BIONZ XR image processing

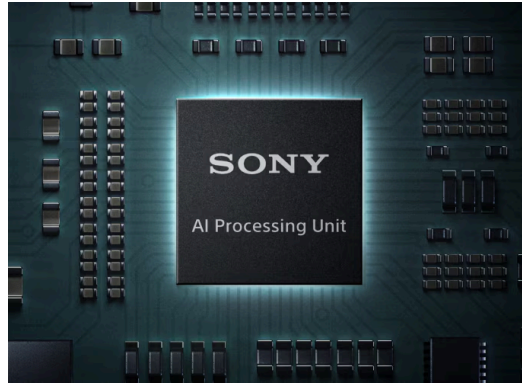


Integrated within the image sensor, our latest generation BIONZ XR image processor enables higher frame-rates, faster autofocus, improved Auto Trace White Balance (ATW) control and superior noise reduction. It extracts maximum performance from the high-resolution image sensor, effortlessly capturing the most subtle textures and finest detail. 5K oversampling with full-pixel readout condenses ample image information into stunning 4K (3840 x 2160) 60p video.

Enhanced White Balance Accuracy

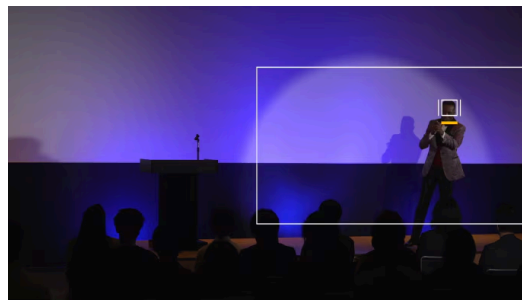
The Z200's Auto Trace White Balance (ATW) control has evolved alongside the BIONZ XR and AI capabilities. The camera's AI Processing Unit enables more precise ATW control, even in challenging lighting conditions, such as when the targeted person is in shadow.

Advanced AI Processing Unit for next generation AF



A specialized AI Processing Unit, working in concert with BIONZ XR, uses deep learning based on the human form and posture data to recognize human subjects with high precision. The Fast Hybrid AF system offers wide 81% coverage to better support Subject Recognition AF and Real-time Tracking. The Z200 can effortlessly track and maintain focus on subjects just about anywhere in the frame.

Auto Framing*



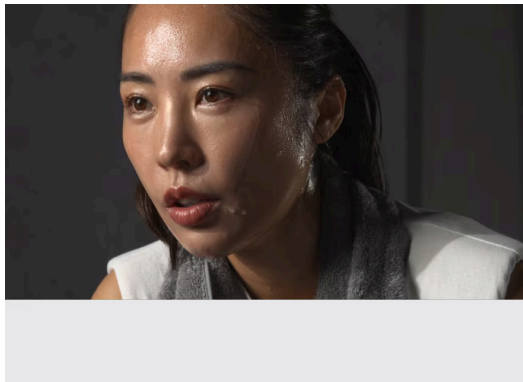
With Auto Framing engaged the camera will automatically track a recognized human subject and adjust framing so that the subject is always prominently positioned in the frame. The resulting footage can look as though a human operator was manually adjusting framing throughout a shoot – even though the camera was actually stationary the entire time. Solo operators can concentrate on engaging with an interviewee without constantly checking on camera positioning.

From Ver.2.0, cropping and framing position can be manually adjusted using Monitor & Control Ver. 2.3. Up to 10** compositions can be preset.

** 4K footage is cropped, resulting in a narrower angle of view. Please note this image was shot on the HXR-NX800.*

*** Paid version only. Up to 2 presets are available at no charge.*

4K 120fps* for
stunning slow
motion footage



The high readout speed of the Exmor RS sensor enables 4K high frame rate (HFR) recording at up to 120fps and FHD at 240fps. Achieve 4x slow motion in 4K at 30p or 5x slow motion at 24p. Whatever your creative choice, high speed AF helps ensure your subject is kept in focus. Slow & Quick Motion** is supported for up to 4K 120fps and FHD 240fps recording.

** With approx. 23% crop. 100fps/200fps in PAL mode. Please refer to the operations manual for minimum memory card requirements to ensure correct operation.*

*** Audio is not recorded in Slow & Quick Motion.*

20x optical zoom



One superb 20x power zoom G Lens™ covers everything from wide angle in-car interviews to telephoto close-ups for sports. Delivering an optical zoom range of 24-480 mm (35-mm full-frame equivalent), it's backed up by Sony's Clear Image Zoom technology, which adds the ability to achieve 30x zoom when recording 4K. From Ver2.0, the Z200 supports the High Quality Digital Extender with Clear Image Zoom function up to 60x in FHD. And you can explore maximum apertures of F2.8 (wide) and F4.5 (telephoto) while zooming quickly, smoothly and silently.

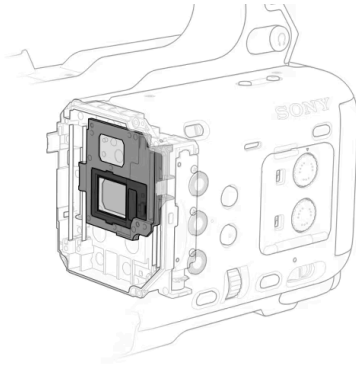
Advanced image
stabilization



Minimize the effects of camera shake with built-in image stabilization. Make sure of smooth, stable footage in Active Mode* image stabilization, where optical and electronic stabilization work together to make handheld shots glide effortlessly.

** Slight image crop in Active Mode. Active Mode is not available when recording at frame rates of 120 (100) fps or higher, including S&Q.*

Built-in Electronic Variable ND Filter



Seamlessly adjust the Electronic Variable ND Filter to suit a variety of light levels. Move from 1/4 to 1/128 ND with a simple dial adjustment or rely on the Auto ND function to maintain the optimum exposure for you—especially useful when moving quickly between indoor and outdoor environments.

Accurate LCD monitor and OLED viewfinder



Easily monitor and focus subjects with a new 3.5-type LCD monitor that offers approximately 2.76 million dots with outstanding brightness and clarity. The monitor swings up and down as well as backward, so finding a comfortable viewing angle is easy. The supplied LCD hood is easily installed by sliding it into the grooves in the top and bottom of the LCD monitor, while the monitor can be folded away for storage even with the hood installed.

For clear, undistracted viewing, the high-contrast 0.39-type OLED viewfinder shuts out extraneous light while offering approximately 2.36 million dots.

Compact design and storage



Easily fold the EVF and LCD panel away for storage of this lightweight camera. The Z200 (main body only) weighs approximately 1.96 kg (4 lb 5.1 oz) and measures 175.6 mm (7 inches) x 201.3 mm (8 inches) x 371.1 mm (14 5/8 inches) (WxHxD), but for storage these dimensions fall to 175.6 mm (7 inches) x 175.4 mm (7 inches) x 285.1 mm (11 1/5 inches) (WxHxD)*. The microphone holder can be detached from the camera for even greater portability.

** Without the lens hood, the microphone holder and the large eyecup.*



Flexible camera control

The Z200 is designed with the flexibility to operate according to your individual preferences and workflow demands. Two independent control rings for focus/zoom [1] and two dials for IRIS/ND Variable [2] are located side by side, allowing for effortless control of exposure along with focus and zoom. From Ver.2.0, IRIS can be assigned to the zoom ring and Zoom can be assigned to the focus ring. The Z200 also has 12 user assignable buttons (ASSIGN 1-11 [3] and FOCUS PUSH AUTO button [4]) that you can set to control almost any camera feature.

AUTO/MANUAL switch



If shooting conditions suddenly disrupt your plans, you can automatically adjust settings and maintain ideal brightness and white balance with a single switch. When set to AUTO, it engages Auto ND Filter, Auto Iris, Auto Gain Control, Auto Shutter, and Auto White Mode.

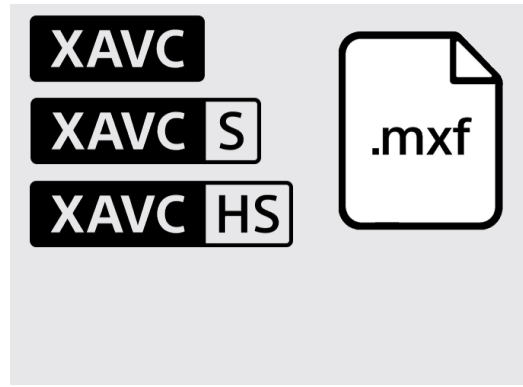
Cinematic and broadcast base looks



Achieve the look of professional broadcast or film productions with ease. Use presets for S-Cinetone, ITU709, 709tone, HLG Live, HLG Mild and HLG Natural, then adjust black, matrix and other parameters as desired. Easily color match your footage with content shot on Sony's other broadcast and Cinema Line cameras.

From Ver.2.0, the scene file can be carried as a single file, including Base Look. In Custom mode, the settings of items that are subject to Store/Recall in the scene file can be saved (exported) to media and loaded (imported) onto the Z200 and NX800.

Multiple recording options



The Z200 offers a variety of recording formats to suit your individual project requirements. XAVC (MXF) provides enhanced compatibility for MXF-based broadcast TV workflows. XAVC S-I offers highest quality 10-bit 4:2:2 recording for 4K (QFHD) using post-production friendly Intra-Frame H.264. XAVC HS-L (H.265) and XAVC S-L (H.264) offer a choice of 4:2:2 or 4:2:0 with Long GOP recording for extended recording times and file-saving efficiency. XAVC HS Proxy recording of up to 16 Mbps can be recorded simultaneously with higher bit-rate formats, and these smaller proxy files can then be used for editing and previewing prior to final production delivery. From Ver.2.0, the Z200 supports MPEG HD422*

** MPEG HD Upgrade License is required (CBKZ-SLMP).*



Comprehensive connectivity

Use SDI output (12G, 6G, 3G Level A & B, and HD), as well as TC input and output, for proxy recording and multi-camera productions. Connect with external equipment through HDMI Type-A, USB Type-C®, LAN, REMOTE, and a range of other connectors.

Wireless monitoring and remote control

Check angles remotely, before shooting, then monitor and control the camera, all thanks to built-in 2.4 GHz and 5 GHz Wi-Fi connectivity*. Download the free Monitor & Control app to record, touch focus, adjust iris, and more**.

[Find out more >](#)

** 5 GHz may be restricted in some regions*

*** Monitor & Control is available from the Google Play Store and the Apple App Store*



4-channel audio

Record up to four channels of audio by combining inputs via XLR connectors and the Multi Interface (MI) Shoe. Adjust levels for two of the channels using audio level dials, without accessing device menus. Together with the SMAD-P5 adapter, our UWP-D Series lets you capture pristine audio – quickly, reliably and with no fuss.

[Find out more >](#)



Designed for live streaming

Stream directly to compatible live streaming services and video sharing sites, via a hard-wired or Wi-Fi connection. RTMP/RTMPS or SRT protocols make it easy for a single operator to efficiently manage everything from recording to distribution. Additional apps and technologies allow you to do even more:

- **Creators' Cloud for enterprise C3 Portal** (paid)* and **XDCAM Pocket** applications use Sony's original QoS technology support high-quality streaming.
- **Creators' Cloud for enterprise M2 Live** application (paid)* enables broadcast/distribution for multiple cameras.
- **The PDT-FP1 Portable Data Transmitter*** offers stable, continuous high-speed data transfer and wide coverage of bands, including LTE, and both 5G Sub6 and mmWave.
- **CBK-RPU7 Remote Production Unit** allows low-latency transmission of high-quality images via an SDI connection.
- **UVC** is available from Ver.2.0. The Z200 can serve as a high-performance web camera when connected to a computer via USB.

** Availability limited to specific regions.*

Simple file transfers



Easily upload proxy and original clips to a cloud or FTP server, straight from the memory card. After registering the destination server in the camera, recorded files are transferred automatically whenever recording stops. Proxy clips can even be recorded in segments and sequentially transferred during recording.

The Creators' Cloud for enterprise C3 Portal (paid)* application makes cloud transfers easy, so video files are available for editing and sharing even sooner.

** Availability limited to specific regions*

[Find out more >](#)



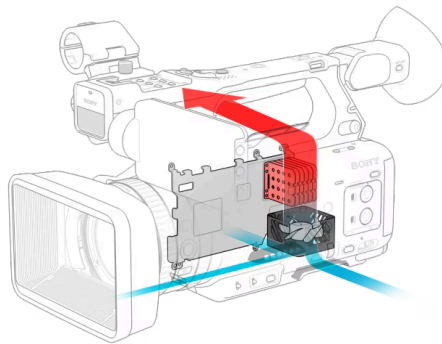
Dual memory card slots

Record on two cards simultaneously or use relay recording to back up your content. Dual memory card slots support both the CFexpress Type A and SDXC memory card.



Dependable battery power

Quickly charge BP-U35, BP-U70 or BP-U100 lithium-ion batteries using the BC-U1A or BC-U2A charger (batteries and charger sold separately). Continuous operating time with a BP-U35 battery is approximately 90 minutes. Swap batteries between other Sony cameras, including the PXW-Z280 and PXW-Z190 camcorders, as well as the FX9 and FX6 Cinema Line cameras.



Internal fan and vents

Maintain optimum operating temperature, thanks to a built-in cooling fan and carefully designed vents.



Interval Rec & Picture Cache Rec

Images can be automatically recorded at set intervals by configuring the number of frames per take and the shooting interval.

By storing video in the internal memory before pressing the Rec button, you can record footage from approx. 5, 10, 20 seconds, etc., prior.

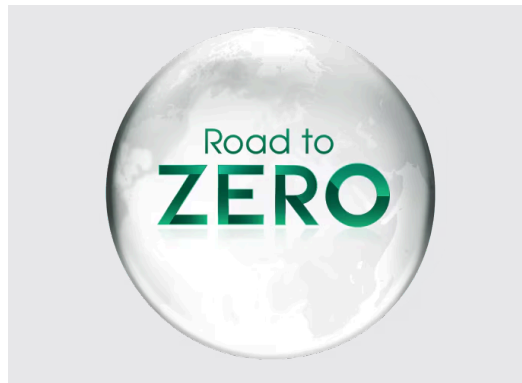
Accessibility



A screen reader function* means you can have menu screens read aloud with user-selected volume and reading speed. A screen magnifier feature increases the size of record, playback and menu screens with a user selected magnification ratio.

** Availability varies depending on region and language.*

Sustainability



Measures have been taken to reduce the environmental footprint of this product at every stage of its life cycle: from product development through supply chain, production, and packaging.

[Find out more >](#)

Specifications

| General | |
|---|---|
| Camera Type | Solid state memory camcorder |
| Mass (Main Body Only) | Approx. 1960 g (4 lb 5.1 oz.) |
| Mass (Including Supplied Accessories and Battery) | Approx. 2400 g (5 lb 4.7 oz.) ^{1*} |
| Dimensions (W x H x D) | Approx. 175.6 x 201.3 x 371.1 mm (7 inch x 8 inch x 14 5/8 inch) |
| Battery | BP-U35, BP-U70, BP-U100 |
| Battery | Yes (Available with USB Type-C Terminal. USB Power Delivery compatible) |
| Power Requirements | DC 19.5 V |
| Normal Power Consumption | Approx. 20 W |
| Maximum Power Consumption | Approx. 37 W |
| Operating Temperature | 0 to 40 °C (32 to 104 °F) |

General

| | |
|--|---|
| Storage Temperature | -20 to 60 °C (-4 to 140 °F) |
| Battery Operating Time (Continuous Shooting) | 90 minutes* ² |
| Recording Format (Video) | XAVC S: MPEG-4 AVC / H.264 XAVC HS: MPEG-H HEVC / H.265 MPEG HD422* ¹⁰ |

Lens

| | |
|--|--|
| Zoom Ratio | 20x |
| Focal Length | f=7.71-154.21 mm |
| Focal Length (35 mm Format Equivalent) | 24-480 mm |
| Iris (Maximum Apertures) | F2.8-F4.5 |
| Focus Range (From the front of the lens) | Approx. 1 cm (0.03 ft) to ∞ (wide) Approx. 100 cm (3 ft) to ∞ (telephoto) |
| Filter Diameter | 72 mm |

Camera Section

| | |
|------------------------------|--|
| Imaging Device (Type) | 1.0-type (13.2 mm x 8.8 mm) Exmor RS CMOS sensor |
| Number of Pixels (Total) | Approx. 20.9 megapixels |
| Number of Pixels (Effective) | Approx. 14.0 megapixels max.* ³ |
| Built-in ND Filter | Linear variable ND (1/4 ND - 1/128 ND) |
| Minimum illumination | 1.2 lx (typ)* ⁴ |
| RAW Output | - |
| Optical Low-Pass Filter | Yes |
| Shutter Type | Electronic shutter |
| Shutter Speed | 1/8000 sec to 64F |
| Slow & Quick Motion (S&Q) | Yes |
| White Balance | 2000 K - 15000 K |
| Gain | -3 to 36 dB (Every 1 dB) |
| Base Look | S-Cinetone, ITU709, 709tone, s709, 709 (800%), S-Log3, HLG (Live / Mild / Natural) |
| Image Stabilization (Type) | Lens shift mechanism and electronic |
| Image Stabilization (Mode) | Active / Standard / Off |

Camera Section

| | |
|--------------------------|---|
| Lens Compensation | Peripheral Shading, Chromatic Aberration, Distortion |
| ISO Sensitivity | ISO 250-16000 equivalent (Using SDR Reset look), AUTO (ISO 250-16000, selectable lower limit and upper limit) |
| Focus Type | Fast Hybrid AF (Phase-detection AF / contrast-detection AF) |
| Focus Point | Max. 475 points (Phase-detection AF) |
| Focus Recognition Target | Human |
| Other Focus Features | AF Subj. Shift Sensitivity, AF Transition Speed, AF Assist |
| Proxy Recording | Yes |
| Clear Image Zoom | Approx. 1.5x (4K), approx. 2x (HD) |

Interface

| | |
|--------------------------|--|
| Audio Input | 3.5 mm Stereo minijack, XLR 3-pin (Female) x2 |
| Multi Interface Shoe | Yes (With Digital Audio Interface) |
| Built-in Microphone | Built-in, stereo |
| Headphone Terminal | Yes (3.5 mm Stereo mini jack) |
| Built-in Speaker | Built-in, monaural |
| Recording System (Audio) | LPCM 4ch (48 kHz 24 bit) |
| SDI Output | BNC, 12G-SDI, 6G-SDI, 3G-SDI (Level A / B), HD-SDI |
| HDMI Output | HDMI connector (Type-A) |
| TC/UB | Yes |
| Timecode Input/Output | BNC, TC IN/OUT Switchable |
| Genlock | - |
| Multi/Micro USB Terminal | - |
| USB Terminal | Yes (SuperSpeed USB 5 Gbps (USB 3.2) compatible) |
| DC Input | Yes |
| Remote | Yes (2.5 mm Stereo mini-mini-jack) |
| Remote (Wireless) | Yes (Bluetooth remote control) |
| Wired LAN | Yes (1000BASE-T, 100BASE-TX, 10BASE-T) |
| Wireless LAN (Built-in) | Yes (Wi-Fi Compatible, IEEE 802.11a / b / g / n / ac (2.4 GHz band / 5 GHz band)) *6 |

Interface

| | |
|----------------|--|
| PC Interface | Mass-storage / MTP |
| Other Function | FTP Transfer Func. (Wired LAN (USB-LAN), USB Tethering, Wi-Fi) |

Monitoring

| | |
|--|---|
| Type (Viewfinder) | 1.0 cm (0.39-type) electronic viewfinder (XGA OLED) |
| Number of Dots (Viewfinder) | 2,359,296 dots |
| Magnification (Viewfinder) | Approx. 1.07x ^{*7} with 50 mm lens at infinity, -1 m ⁻¹ |
| Diopter Adjustment (Viewfinder) | -4.0 to +3.0 m ⁻¹ |
| Eye Point (Viewfinder) | Approx. 22 mm from the eyepiece lens, at -1 m ⁻¹ ^{*8} |
| Finder Frame Rate Selection (Viewfinder) | - |
| Type (LCD Screen) | 8.8 cm (3.5-type) type TFT |
| Touch Panel (LCD Screen) | Yes |
| Number of Dots (Total) (LCD Screen) | 2,764,800 dots |

Media

| | |
|------|--|
| Type | SLOT A: Multi slot for SD (UHS-I / II compliant) memory card / CFexpress Type A card SLOT B: Multi slot for SD (UHS-I / II compliant) memory card / CFexpress Type A card |
|------|--|

NFC

| | |
|-----|---|
| NFC | - |
|-----|---|

Streaming

| | |
|-----------------------------|---|
| Protocols (Network) | RTMP, RTMPS, SRT |
| Video Data Format (Network) | MPEG-4 AVC / H.264 MPEG-H HEVC / H.265 |
| Video Resolution (Network) | 3840 x 2160 (using RTMP / RTMPS), 1920 x 1080, 1280 x 720 |
| Audio Data Format (Network) | AAC-LC 2ch (16 bit 48 kHz) |

Accessibility

Accessibility Functions

Enlarge Screen, Screen Reader

Accessory

Supplied Accessory

AC adaptor, Power cord, Battery charger, Rechargeable Battery, LCD hood, Lens hood, Eyecup, Microphone holder, Cold shoe kit

Notes

1*

When attaching lens hood, LCD hood, microphone holder, eyecup and BP-U35.

2*

Using BP-U35, normal power consumption.

3*

The number of effective pixels will vary depending on the shooting mode and settings.

4*

3840 x 2160 / 29.97p mode, F2.8, +36 dB gain, SS=1/30 (sec), BaseLook=ITU709.

6*

The model shipped to countries with legal restrictions on 5 GHz band communication does not support 5 GHz communication. Please check the regulations in your country or region.

7*

35 mm camera equivalent.

8*

CIPA standard.

9*

Design and specifications are subject to change without notice.

10*

License Required

Gallery



Accessories



BP-U35

Lithium-ion battery 35 Wh



SMAD-P5

Multi Interface Shoe



BP-U70

Lithium-ion battery 72 Wh



BP-U100

Lithium ion battery 97 Wh



PDT-FP1

Portable data transmitter with 5G, mmwave and sub6 for high-speed transmission of video and still images



CBKZ-SLMP

MPEG HD Upgrade



CBK-RPU7

HEVC 4K/HD remote production unit

Related products



PXW-Z300

Flagship handheld XDCAM camcorder with three 1/2-type 4K Exmor R® CMOS image sensors and AI-powered Subject Recognition AF, Flexible LCD arm



HXR-NX800

1.0-type Exmor RS™ stacked CMOS sensor handheld NXCAM camcorder with 20x optical zoom, XAVC 4K, AI-powered Subject Recognition AF, Instant HDR Workflow



PDT-FP1

Portable data transmitter with 5G, mmwave and sub6 for high-speed transmission of video and still images



CBK-RPU7

HEVC 4K/HD remote production unit



UWP-D27

UWP-D complete wireless audio package with seamless Sony cameras integration.



CBKZ-SLMP

MPEG HD Upgrade

PXW-Z200 - Sony Pro

© 2004 - 2026 Sony Corporation. All rights reserved. Reproduction in whole or in part without written permission is prohibited. Features and specifications are subject to change without notice. The values for mass and dimension are approximate. All trademarks are the property of their respective owners.