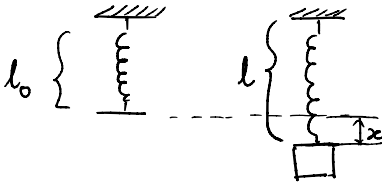


Springs

Hooke's Law

$F = Kx$, F = force on the spring
 K = spring constant
 x = change in length of the spring

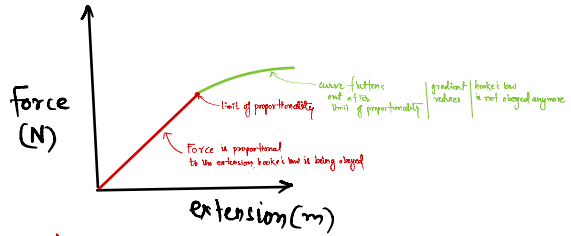


$x = l - l_0$, l = new length
 l_0 = original length

Force-extension graph

* a straight line passing through the origin till the proportional limit is reached.

\Rightarrow * The "gradient" of the line is the value of spring constant "K" of the spring



Related questions P4 book

Page no.	Question	
63	41	
91	60	
127	82	
128	83	
144	92	