

KUBER PALACE

AT DAHISAR (WEST)



ABOUT

A landmark project brought to you by Kuber Nirman Developers situated in the premium locality of Dahisar (West) is a symbol of a modern building with uniquely sized apartments, great design along with amazing connectivity. It comprises the blend of amenities that spells sophistication and class which will give you a complete pictures of your own dream home at **KUBER PALACE**. The project comprises of 20 floors building comprising of well planned residential apartments. The apartments are endowed with thoughtful selection of materials with modernised interior.







APARTMENT

- Vitrified tiled flooring in entire flat, Vastu compliant plans
- Elegant, designer finished entrance door and internal doors with superior quality fittings
- Gypsum finished internal walls with plastic/ flat paint
- Heavy section, anodized aluminum sliding windows



KITCHEN

- Granite Platform
- 4' 0" height ceramic tiled wall above the platforms
- Scratch resistant stainless steel sink
- Provision for water purifier
- Space for Washing Machine



BATHROOM

- Anti-skid flooring
- Digitally Designed tiled wall up to 7' 0" height
- Premium sanitary fixture
- Naturally ventilated bathroom
- Instant Water heaters, Racold or equivalent



SECURITY

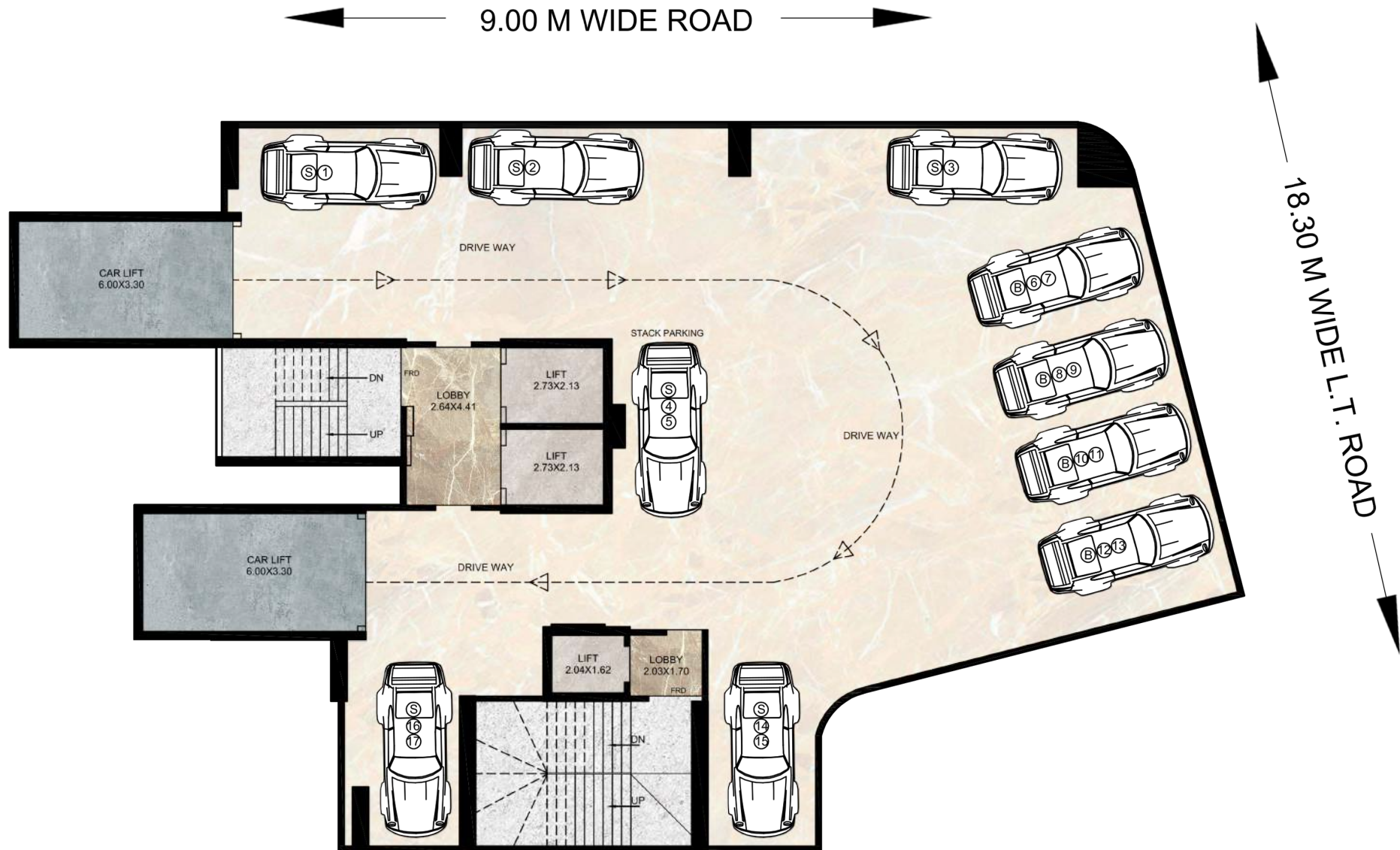
- Earthquake resistant structure
- 24 hours CCTV surveillance
- Advanced fire-fighting systems
- Rainwater Harvesting System



AMENITIES

FLOOR PLANS

The image displays architectural floor plans for a building, rendered in a light orange line-art style. The plans show various rooms including bedrooms (Quarto), bathrooms (Sanit), kitchens (Cozinha), service areas (Serviço), and living/dining areas (Estar/Jantar). Room dimensions are provided in square meters (m²). An orange geometric overlay, consisting of a large rectangle and a smaller triangle, is positioned on the left side of the image, partially obscuring the floor plan details. The text 'FLOOR PLANS' is written in white, bold, sans-serif capital letters across the orange overlay.



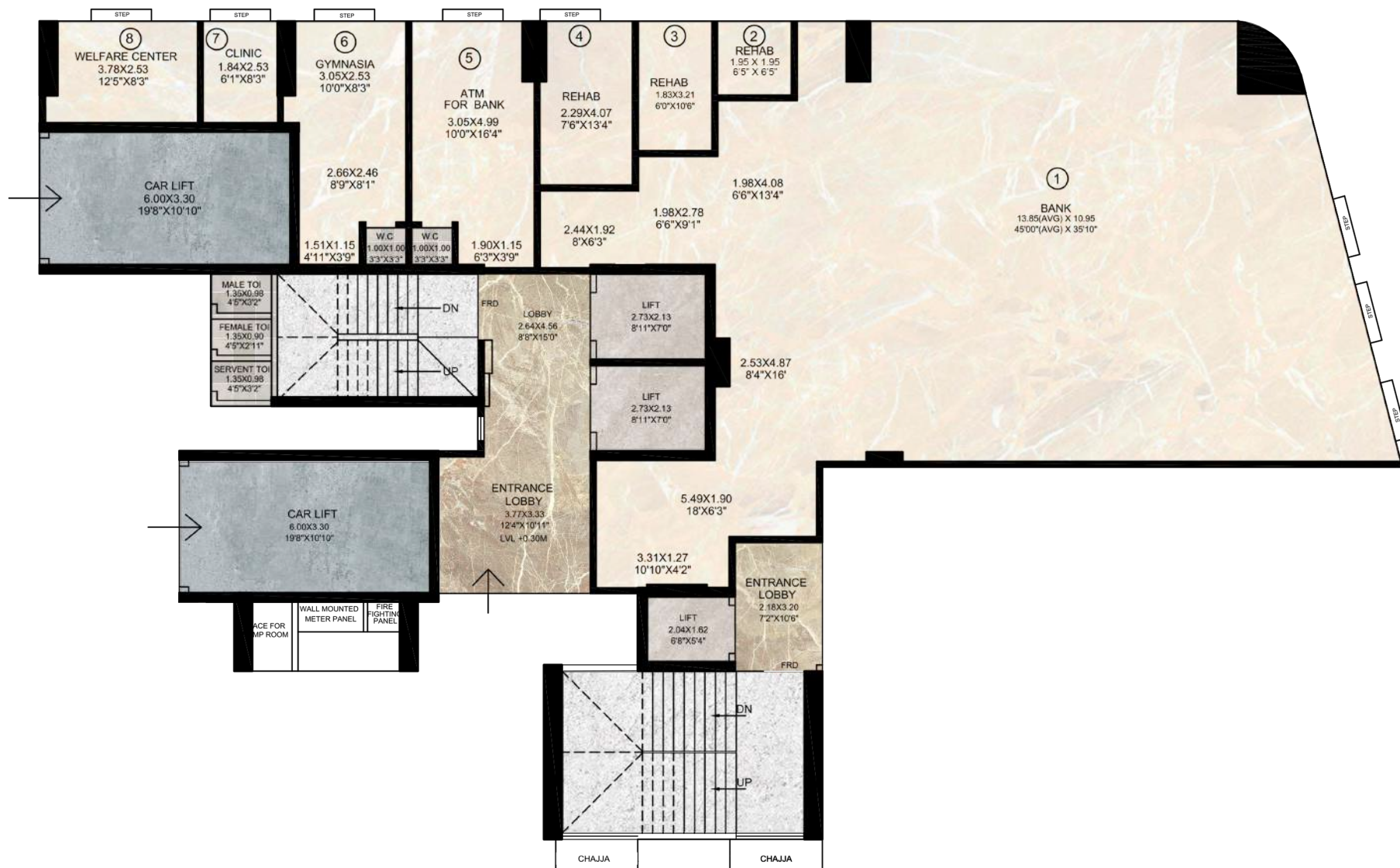
BASEMENT PLAN



9.00 M WIDE ROAD

18.30 M WIDE L.T. ROAD

STOP



GROUND FLOOR PLAN



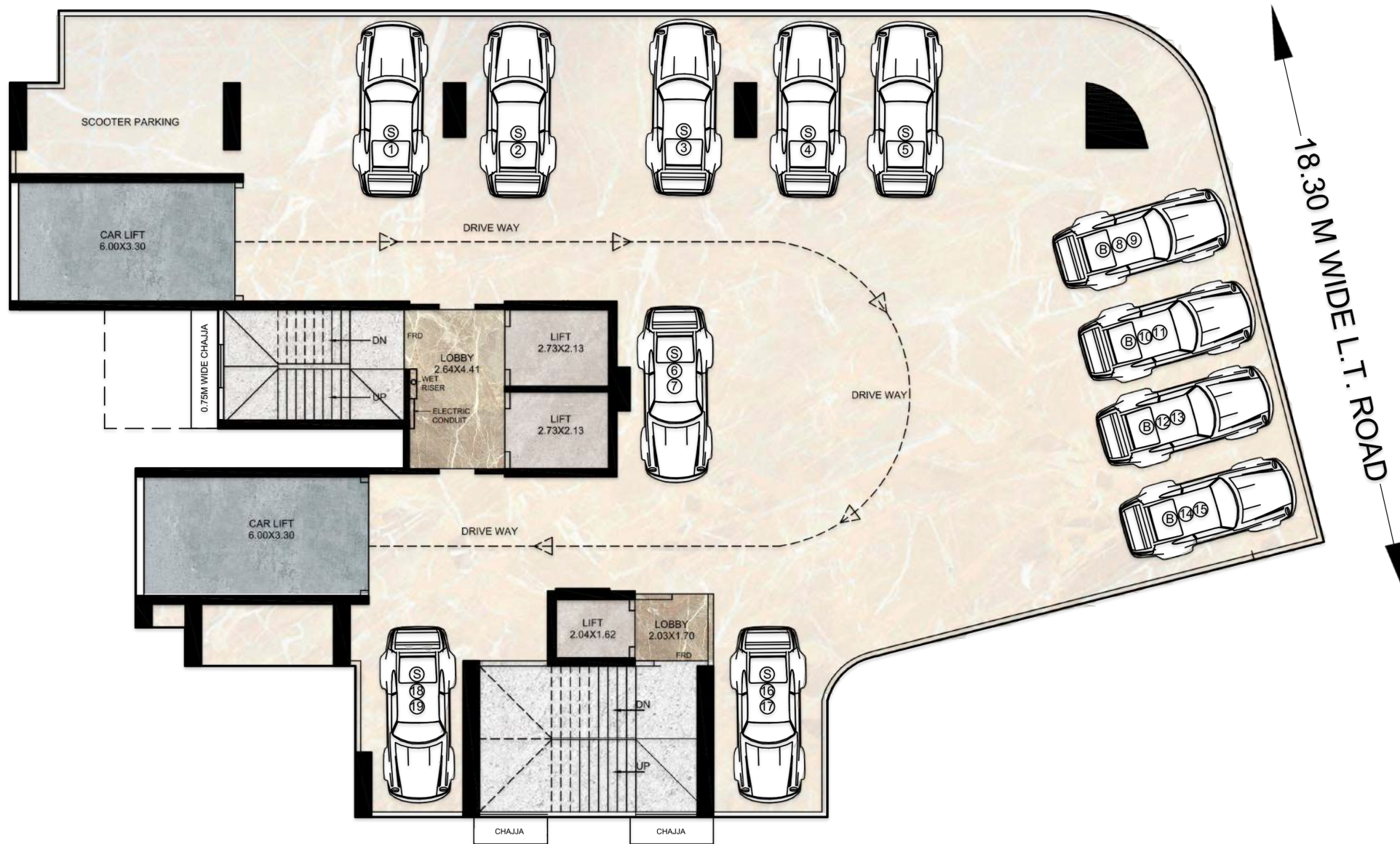
9.00 M WIDE ROAD



1ST FLOOR PLAN

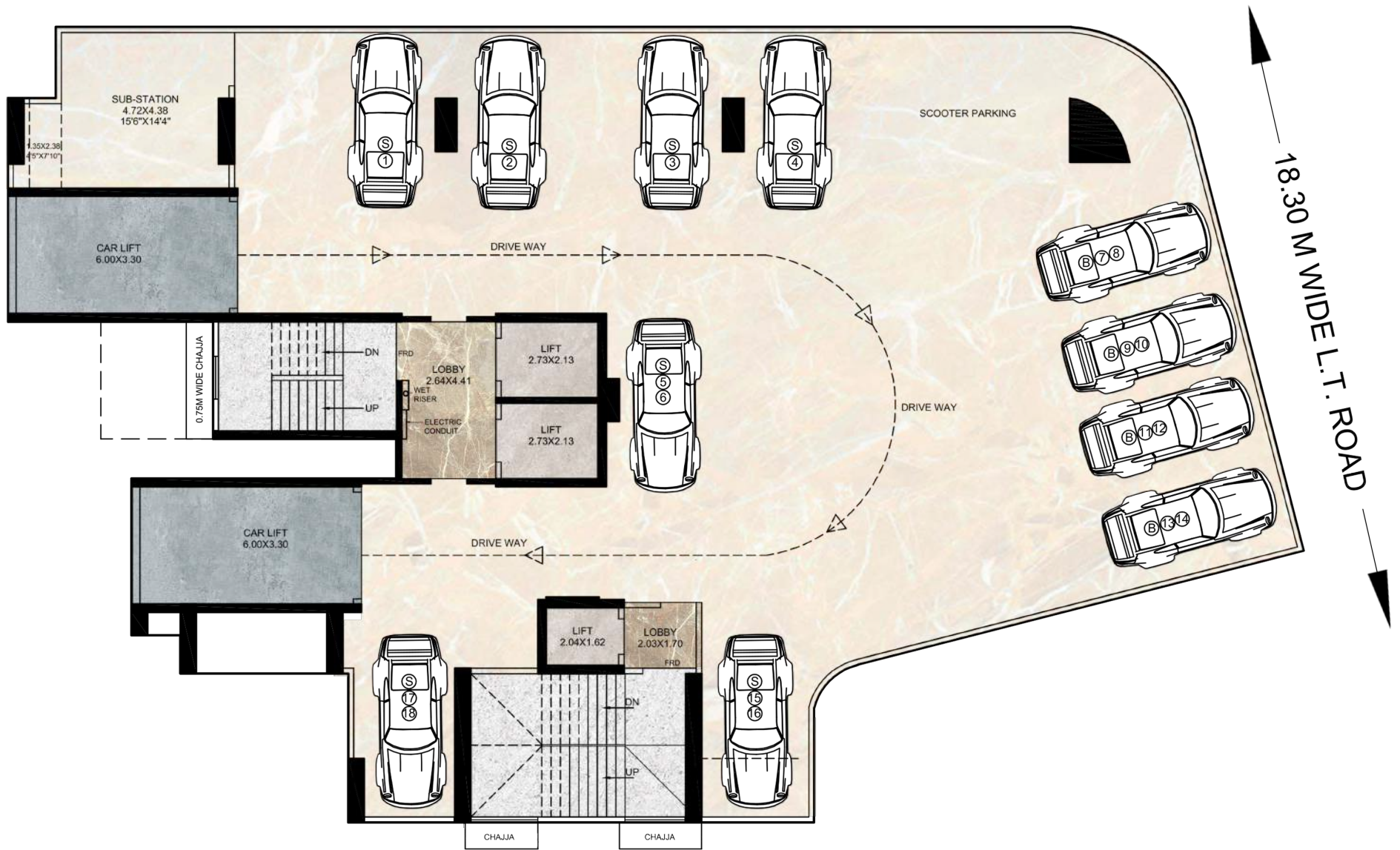


9.00 M WIDE ROAD



2ND PODIUM FLOOR PLAN





3RD PODIUM FLOOR PLAN



9.00 M WIDE ROAD



← 9.00 M WIDE ROAD →



9.00 M WIDE ROAD



18.30 M WIDE L.T. ROAD

10TH TO 12TH FLOOR PLAN





13TH TO 20TH FLOOR PLAN



PROXIMITY TO

Explore Premium Living at it's best,
with place that offers you personal
space and is well-connected
with life's conveniences.



Temple
3 Minutes

- Datta Mandir
- Shree Shantinath Jain Temple



Dahisar Railway Station
1 Minute



Entertainment
15 Minutes

- Movie Time Cinema



Hospital
5 Minutes

- Dr. Crystal Hospital
- Dr. M. L. Dhawale Memorial Trust Hospital
- Navneet Hospital



Mall
20 Minutes

- Saikrupa Mall
- Devraj Mall



Education
5 Minutes

- St. Louis High School
- Don Bosco Junior College



Airport
40 Minutes



Bus Stop
5 Minutes



Metro Station
15 Minutes

STAY CONNECTED

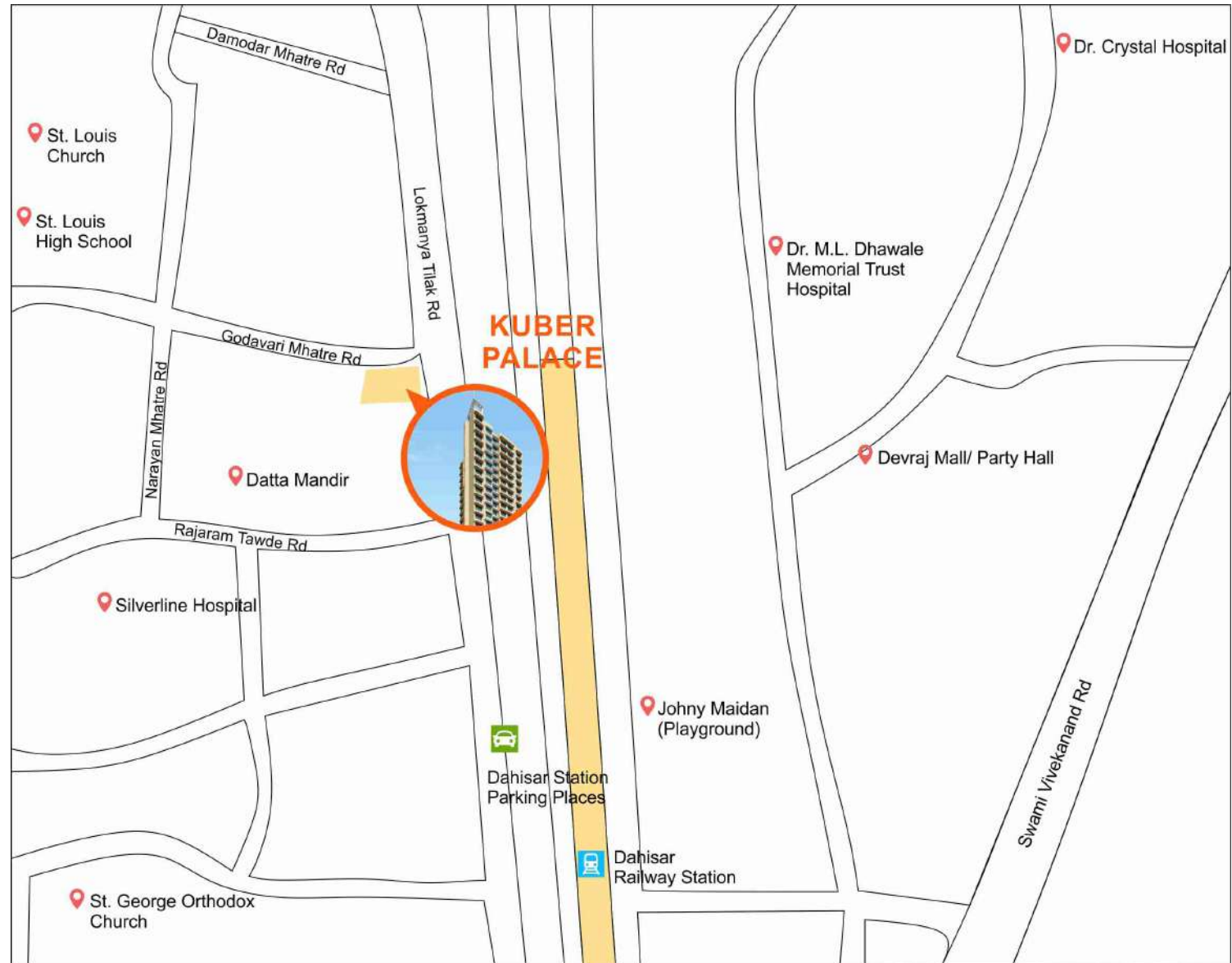
Experience a feeling of comfort and joy with everything you need, daily around you. With a home at the nerve-center of suburbs all immediate conveniences from transportation to entertainment are at a stone's throw away.



Road



Railway Station





DEVELOPERS

**KUBER
NIRMAN
DEVELOPERS**

ARCHITECTS



Rasik P. Hingoo Associates

STRUCTURAL DESIGN

SSPL

Shah Structural Pvt. Ltd

FOR INQUIRY

Mehta Estate Agency



Deven Mehta



+91 9819741142

+91 9819040401

022 28941404

022 28957748

Site Address: Proposed Commercial & Residential Building on Plot Bearing CTS no. 774, 774/1 to 18 of Village, Dahisar at L. T. Road, Dahisar (West), Mumbai.

Disclaimer : This brochure does not constitute of an offer or contract. In the interest of project improvement or due to changes in the rules & regulations of respective authorities, the developers reserves the right to change plans, specifications, features, etc., without prior notice or obligation at their discretion. The images used are for representation purpose only.