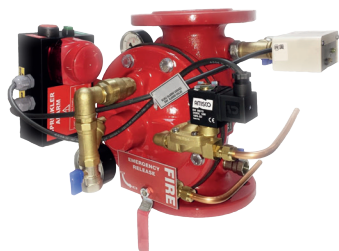


The DCT25 Dry Alarm Valve is designed to offer reliable monitoring and alarm activation in dry pipe fire protection systems. Ideal for environments where water is not present in the pipes until needed, this valve ensures prompt detection of water flow and timely activation of alarms, enhancing fire safety and system responsiveness.

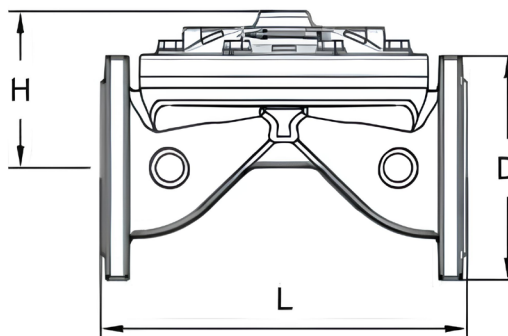


Scope of Application

- Industrial Facilities
- Commercial Buildings
- Municipal Infrastructure
- Healthcare Facilities
- Educational Institutions
- Residential Complexes
- Data Centers
- Transportation Hubs

Optional

300 PSI



Material Specifications

NU	PART NAME	MATERIAL
	Body	EN GJS 500 - Ductile Iron
	Cover	EN GJS 500 - Ductile Iron
	Standard	230 PSI



Dimensions

DN (mm)	D	H	L	WEIGHT
50	165	105	225	16
65	185	110	250	19
80	200	125	305	24
100	220	145	330	30
125	250	227	380	48
150	285	244	400	51
200	340	272	450	79