



The DFP14 N Part Duck Foot is an essential component in various industrial and construction applications, designed for durability and efficient performance. This high-quality tool features a unique design that ensures stability and precision during use. It is used to create a 90° angle.

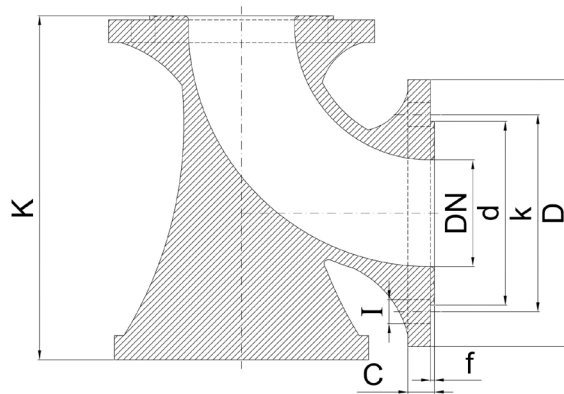
Typically crafted with robust materials, the DFP14 N Part Duck Foot is engineered to handle demanding tasks with ease. Its design includes a specialized mechanism that facilitates reliable and controlled operation, making it a critical asset in professional settings.

### Scope of Application

- Construction and Engineering
- Manufacturing
- Plumbing
- HVAC Systems
- Agriculture
- Utility Installations
- Custom Fabrication Projects

### Optional

Steel



### Material Specifications

NU	PART NAME	MATERIAL
1	N Part (Duck Foot)	EN GJS 500 - Ductile Iron



### Dimensions

DN (mm)	D	k	d	lxn	C	f	K	WEIGHT
80	200	160	132	19x8	19	3	250	10
100	220	180	156	19x8	19	3	255	14