

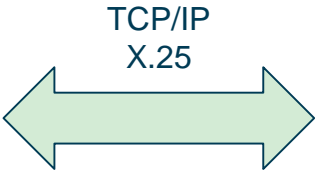
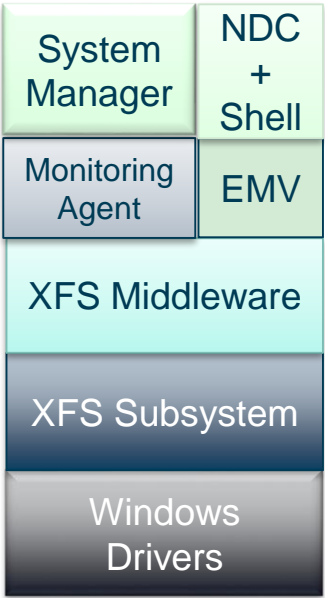
ATM SWITCH & NDC+ SUPPORT

Yüksel Akbulut
15.09.2024

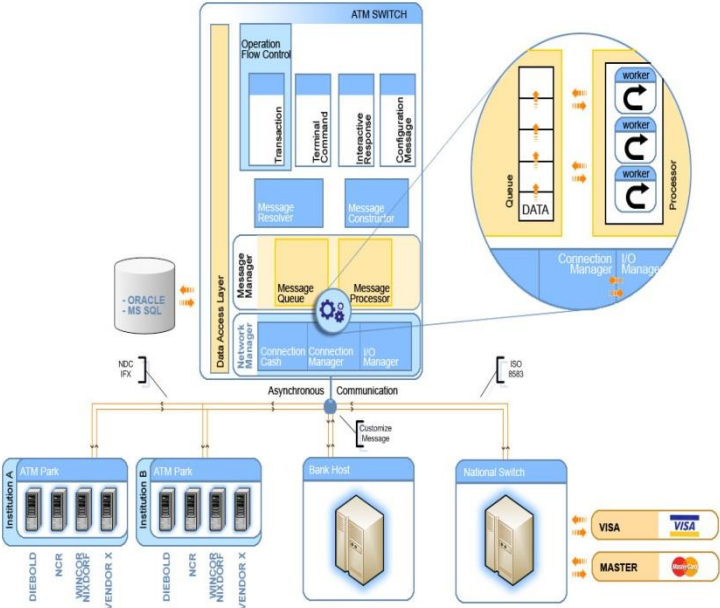
Overall System Architecture



ATM NDC+ Client



ATM Server / HOST Switch



Drives ATMs , Serves Transactions and Switches...

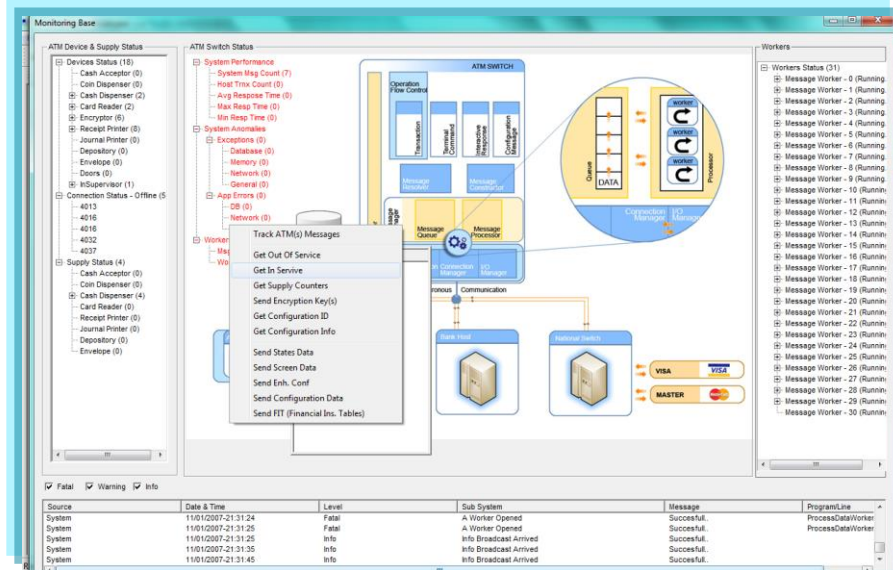
Features

- Multi language support
- NDC+ message support
- Multi host connection
- TCP Connection pool management
- Infinite number of ATM support
- Multithreaded structure
- Automatic NDC+ Project Design and Configuration
- Asynchnronous Communication Interface

INFRA

- Native MS SQL support
- 80 TPS
- TCP/IP network protocol support
- C++, Object oriented
- IO Completion Ports

End to End ATM Management



Command Code

☐ Start up ☐ Shut Down

☐ Configuration ID ☐ Supply Counters

☐ Tally Info. ☐ Key Exchange

☐ Configuration Info. ☐ Date Time

Command Modifier

A B C D E F G H I J K L M N O P Q R S T U V W X Y Z

Send Command

Source Version Target Version

>>> <<<

Cash Configuration & Loading

State Send Config Info Send Fit Send

Screen Send Enh Config Send

Send All Configuration

Single State / Screen Sending

Item Number

Send State Send Screen

OK Cancel

The image shows a computer screen with a large grid of colored squares (blue, green, yellow) and a sidebar on the left. The sidebar contains various icons, including a magnifying glass, a list icon, a search bar, and a red stop button. The grid is composed of many small squares, some of which are colored blue, green, or yellow, while others are white. The overall appearance is that of a data visualization or a game interface.

