

ATM SOFTWARE

SOLUTIONS

Yüksel Akbulut
27.04.2025

☐ *ATM Client(XFS)*

☐ AVS Pro Studio

☐ AMS Manager

☐ MonX(XFS)

▶ *ATM Terminal Management*

Visual ATM Project Developer

ATM Switch & Server

Remote ATM Monitoring & Maintenance (XFS)

NDC+ Client provides ATMs with managing all devices and connecting to host via NDC+ messaging system.

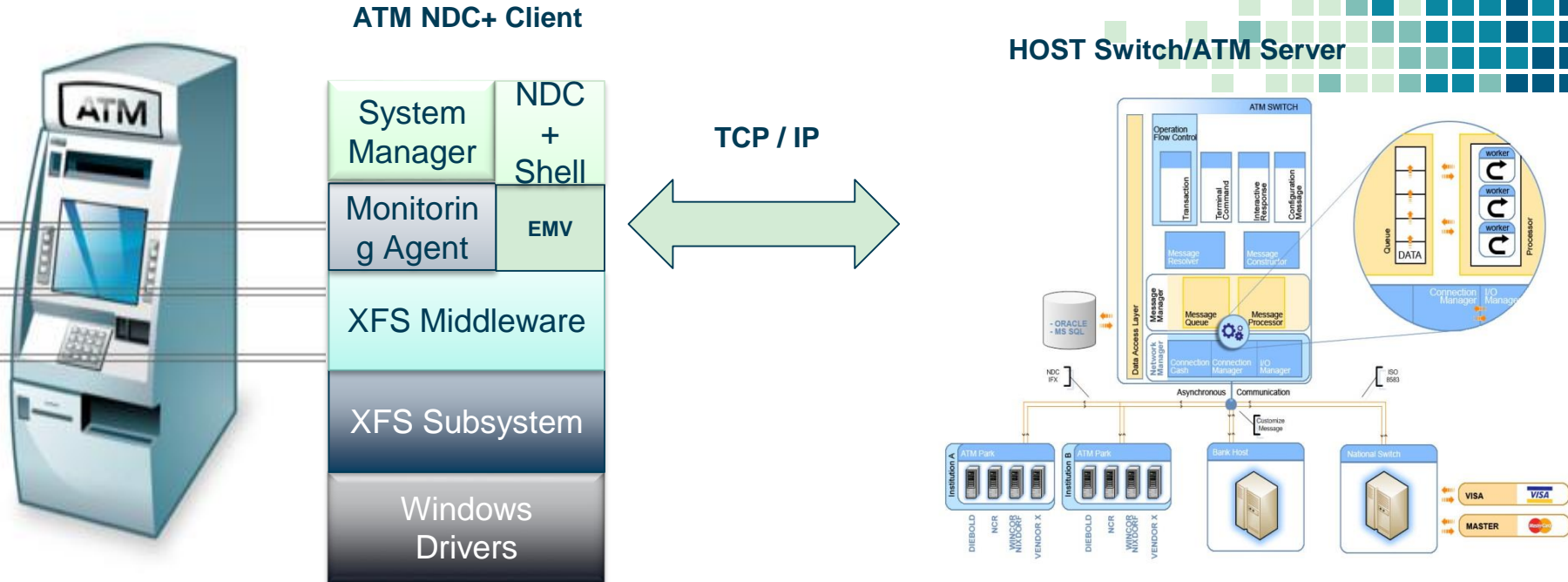
Features

- Supports NDC+
- Supports EMV
- Provides WEB Interface
- XFS 2.0, 3.0
- TCP/IP, X.25 Network Protocol
- Multivendor (NCR, Diebold, Wincor..etc)
- Integrated with AVS Studio
- Plug & Play NDC+ States, Screen, Configuration...etc

- Microsoft VC++
- ActiveX, Com

ATM Client – Multi ATM vendor support;

Gives power to ATM with NDC+ over XFS...



❑ ATM Client(XFS)

❑ *AVS Pro Studio*

❑ AMS Manager

❑ MonX (XFS)

ATM Terminal Management

▶ *Visual ATM Project Developer*

ATM Switch & Server

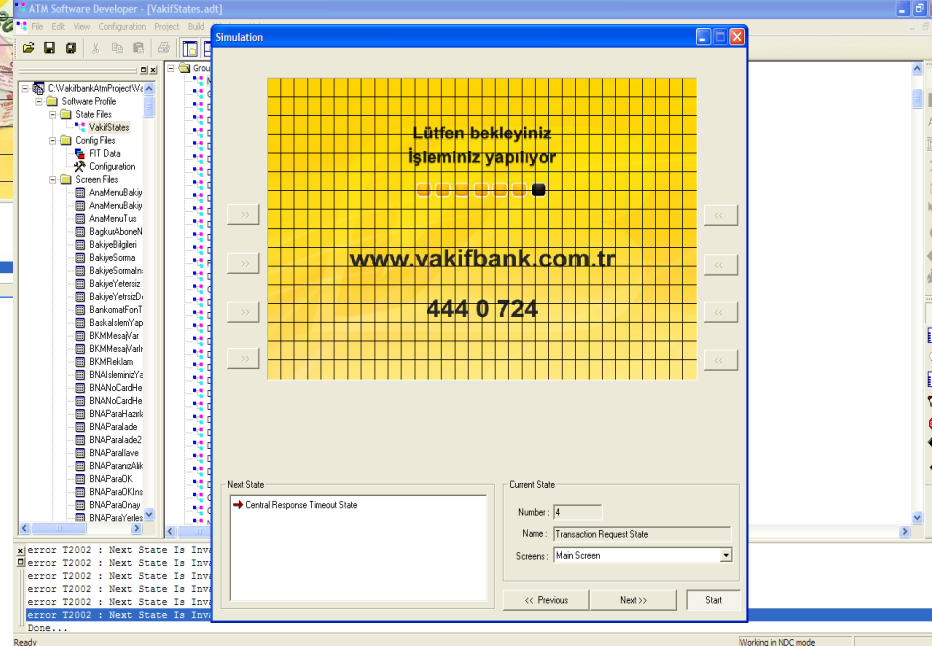
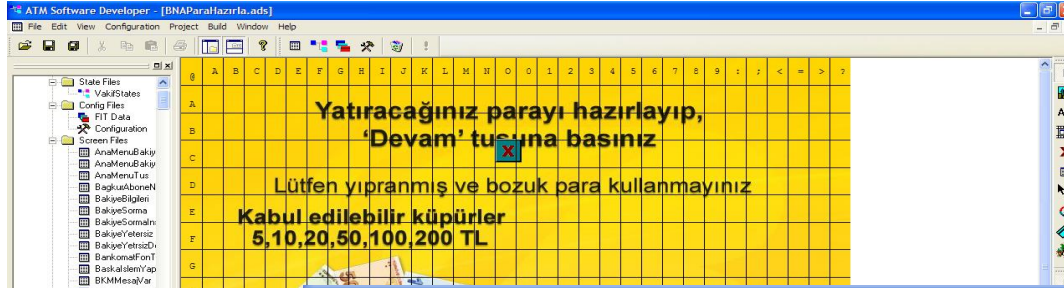
Remote ATM Monitoring & Maintenance (XFS)

AVS Pro Studio provides visual project design studio for NDC+ based ATMs.

Features

- Visual ATM project design
- Visual ATM screen design
- Visual configuration
- NDC+ State, Screen, FIT, Configuration design and direct download
- Compilation & PC based simulation, automatic recognition of old NDC+ projects
- NCR, Diebold, Wincor.. support

- Microsoft VC++
- ActiveX, Com



□ Painting

□ Simulation

- ❑ ATM Client(XFS)
- ❑ AVS Pro Studio
- ❑ *AMS Manager*
- ❑ MonX (XFS)



ATM Terminal Management

Visual ATM Project Developer

ATM Switch & Server

Remote ATM Monitoring & Maintenance (XFS)



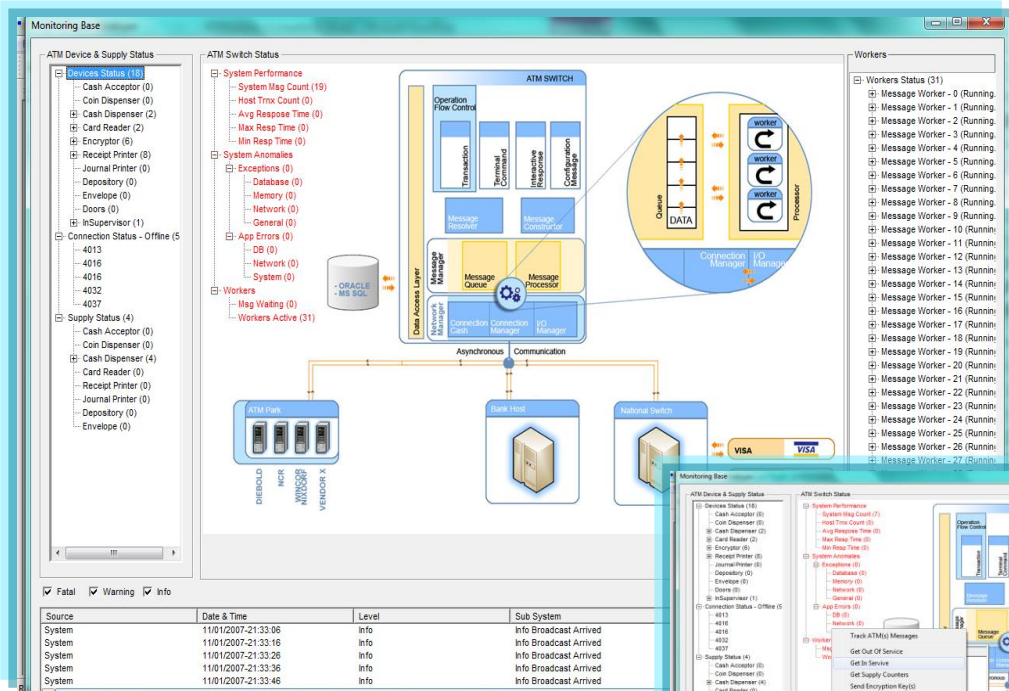
ASS – ATM Switch & Server;

Drives ATMs , serves transactions and switches to...

Features

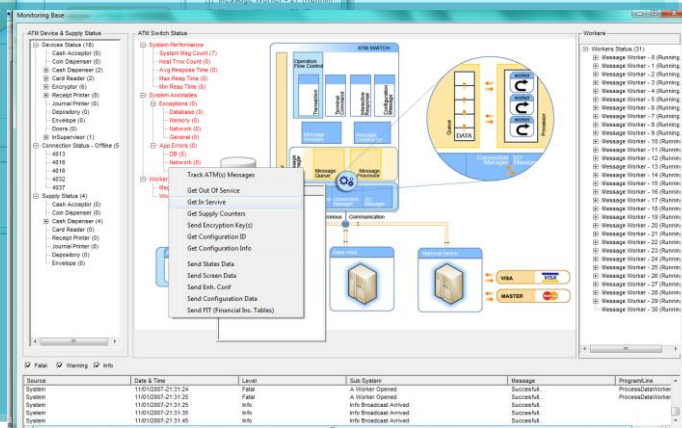
- Multi institution support
- Multi language support
- NDC+ message support
- Multi host(ISO 8583, Proprietary) connection
- Web based front end
- TCP Connection pool management
- Infinite number of ATM support
- Multithreaded structure

- Native MS SQL support
- 80 TPS
- TCP/IP network protocol support
- C++, Object oriented, C#, ASP



❑ Multithreaded NDC Server

❑ Robust ATM Network Manager



☐ ATM Client(XFS)

☐ AVS Pro Studio

☐ AMS Manager

☐ *MonX (XFS)*

ATM Terminal Management

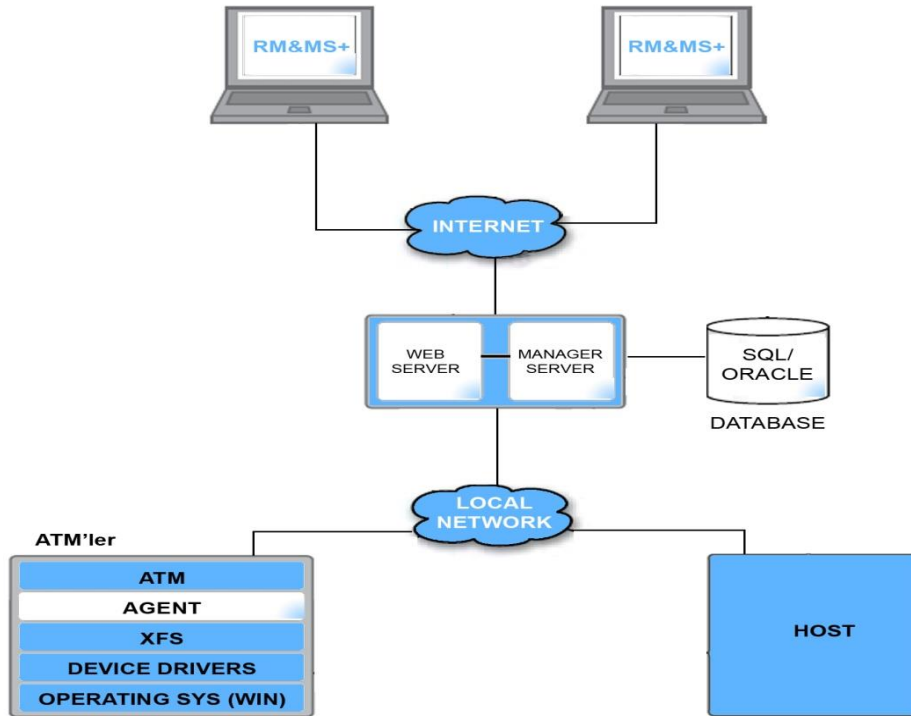
Visual ATM Project Developer

ATM Switch & Server

▶ *Remote ATM Monitoring &
Maintenance (XFS)*



Short path for monitoring..



Features

- Multi institution support
- Multi language support
- Web based front end
- Various monitoring screens
- Map based monitoring
- Remote ATM device tests
- Remote file upload and download
- Scheduled task planning
- Remote restart, shutdown features
- Remote encrypted ATM key loading

- Easy handling of hardware errors and solution explorer
- Getting hardware & software information
- Changing ATM network information (Ip address, Gateway, subnet mask..etc)
- Email, SMS and popup message alerts
- C#.NET, ASP.NET
- SQL Server

