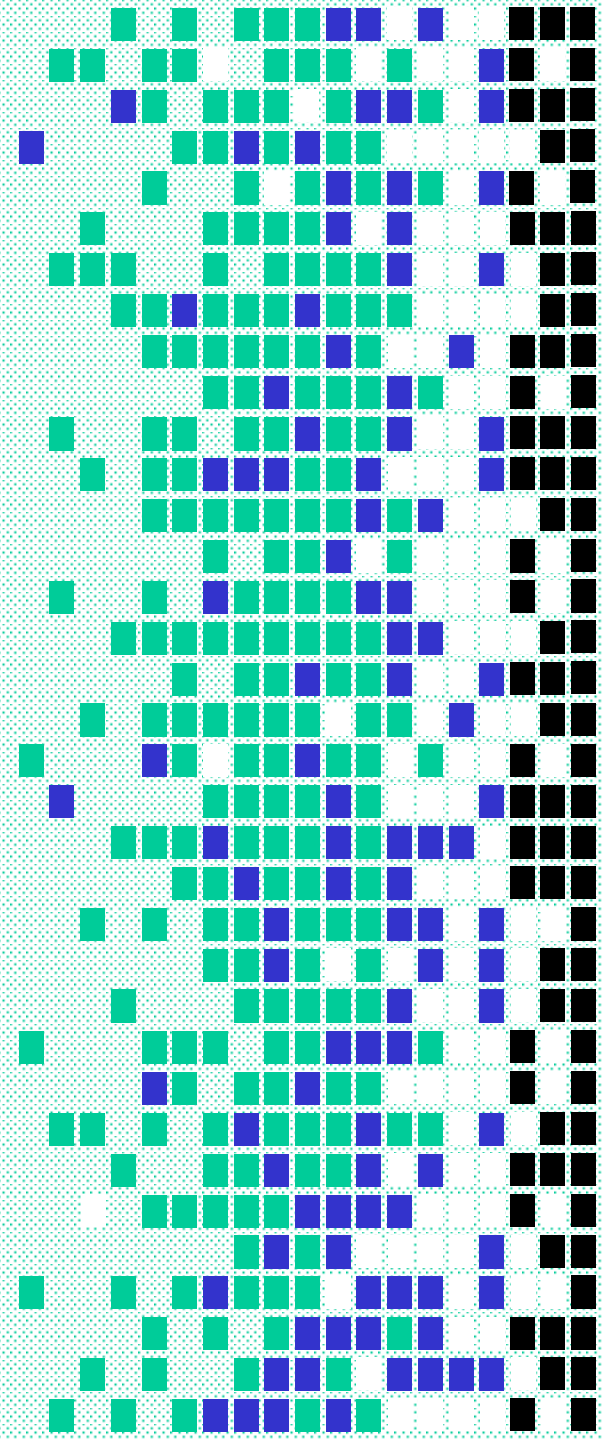


**ATM Pro Studio**



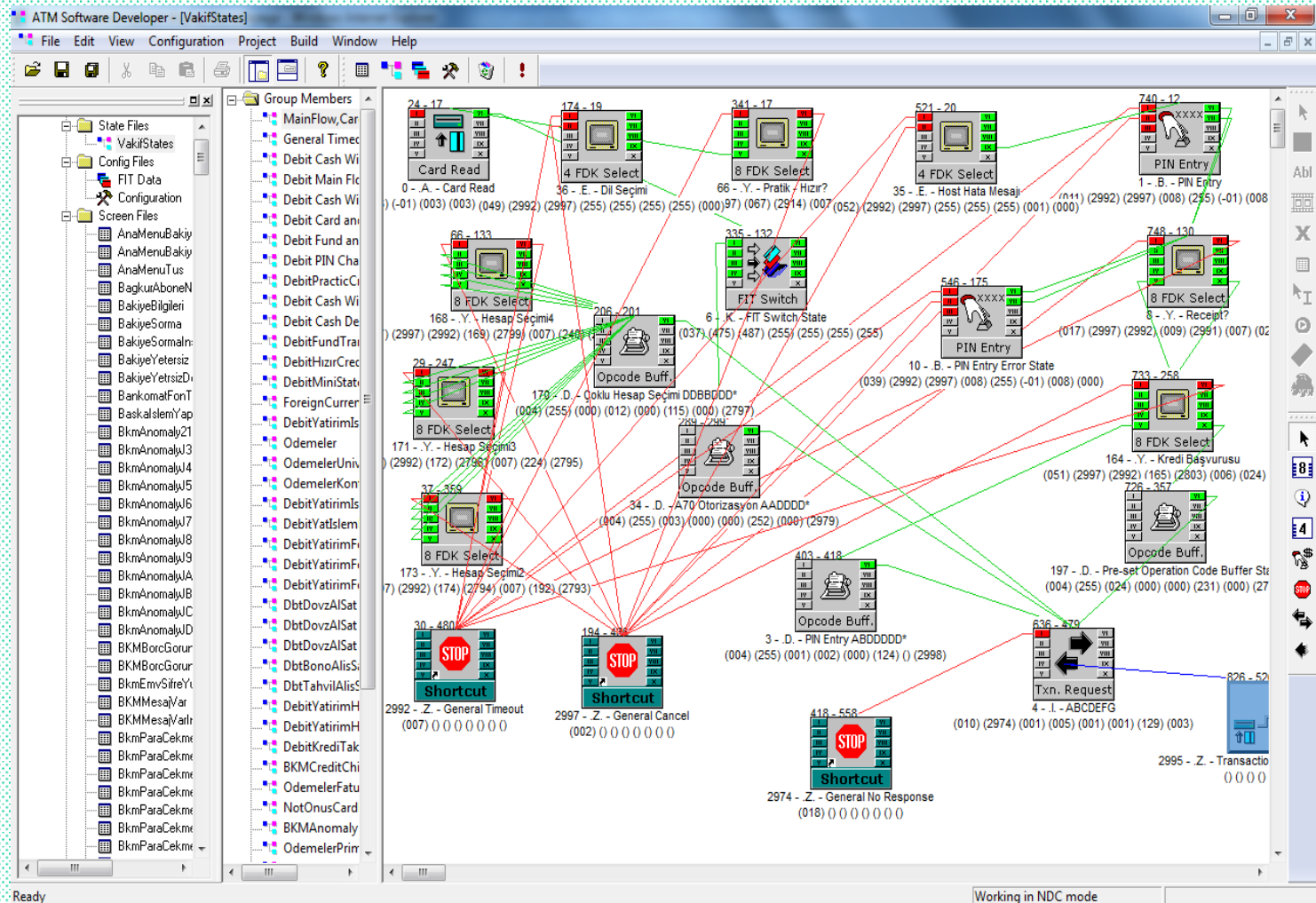
- Fully Compliant with NDC+ Standards
- Visually Screen, State, FIT and Configuration Design
- Simulation of screen and states on PC
- Compiling state and screen designs reduces human-caused errors.

- Easy to use development environment
- Shortcut keys, toolbars that contains most used states and screen objects enables quick access that shortens design time

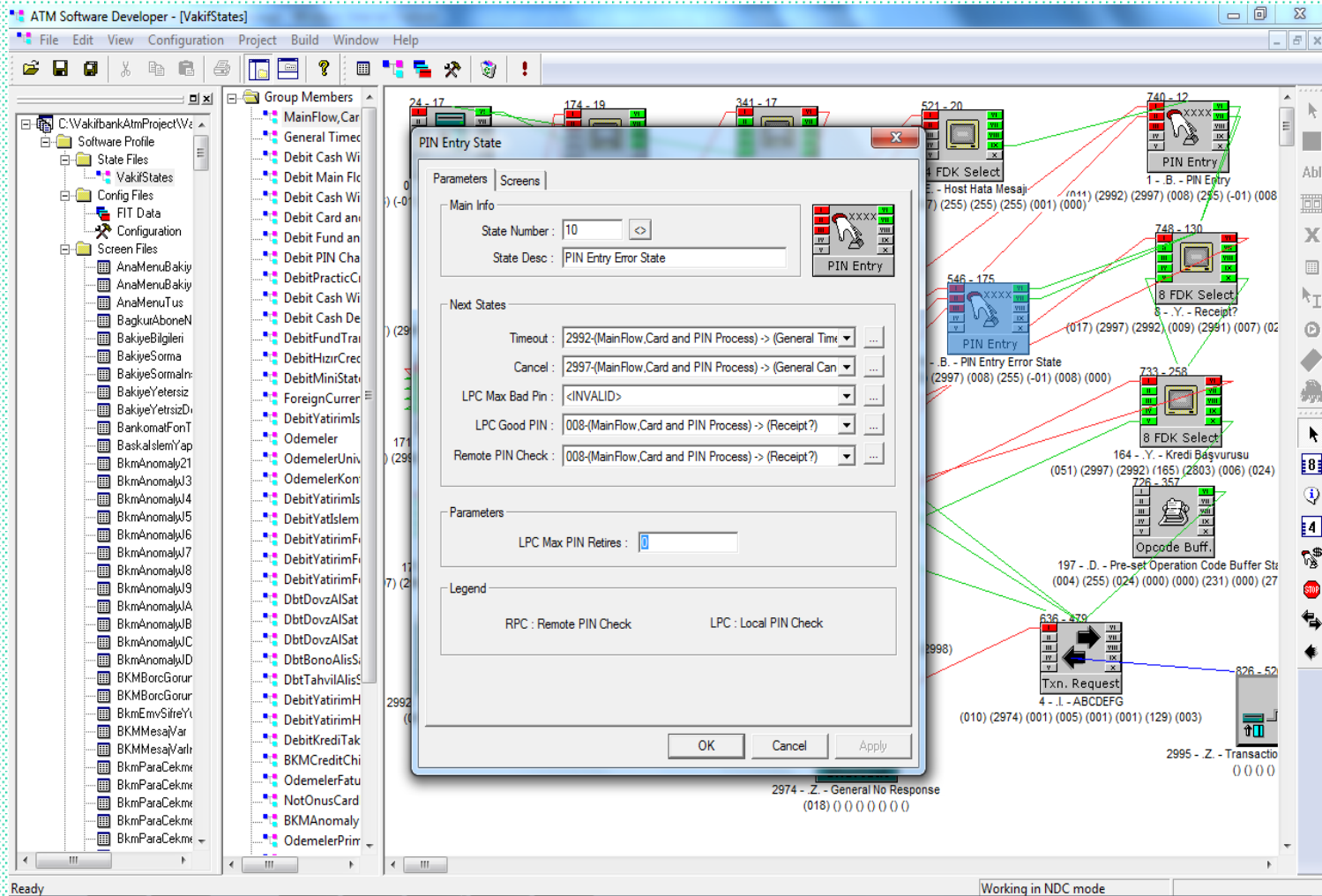
## State Flow

- Designing State Flow visually, using drag and drop method.
- Setting advanced properties of states in state properties dialog box.
- Seeing state screens' visual thumbnails in state properties dialogbox.

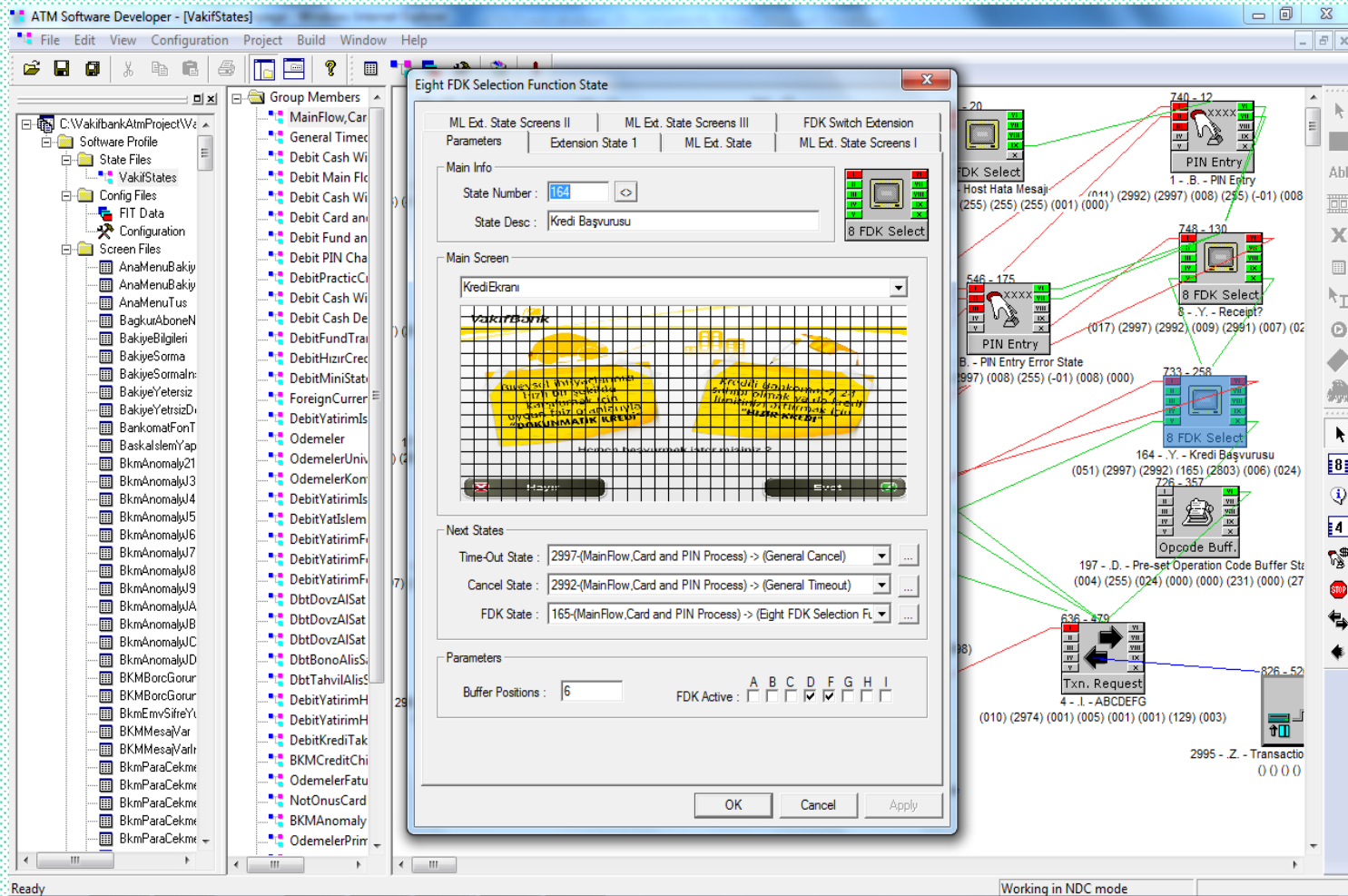
# Drag and Drop Design



# Adjusting by Properties



# Addressing Screens from Properties



## Project Compile

- Before generating state scripts, state compilation shows state flow errors that gives user ability to fix at design time.
- Compilation reduces human caused errors.
- Produce Outputs compliant with NDC+ .



# Addressing Errors by Double Clicking after Compile

The screenshot displays the ATM Software Developer interface for a project named [VakifStates]. The main workspace shows a state machine diagram with various states and transitions. States include:

- 265 - 236: 4 FDK Select
- 333 - E - KrediHesapYok (7) (2736) (255) (255) (013) (000)
- 334 - E - AktivHesapYok (148) (2737) (2736) (255) (255) (013) (000)
- 335 - E - OdemeTablosuProblemi (147) (2737) (2736) (255) (255) (013) (000)
- 339 - Y - KrediTaksitindirimOnay (150) (2737) (2736) (244) (2744) (007) (024) (2743)
- 350 - D - OdemeOnay(BADBDD) (2747) (255) (002) (009) (000) (244) (2740)
- 272 - 569: Shortcut (2736 - Z - CancelClose) (002) 0000000
- 2747 - Z - TrmxRequest (004) 0000000

Transitions are labeled with codes like 4 FDK Select, 8 FDK Select, and OPCODE Buff. The console at the bottom shows several errors:

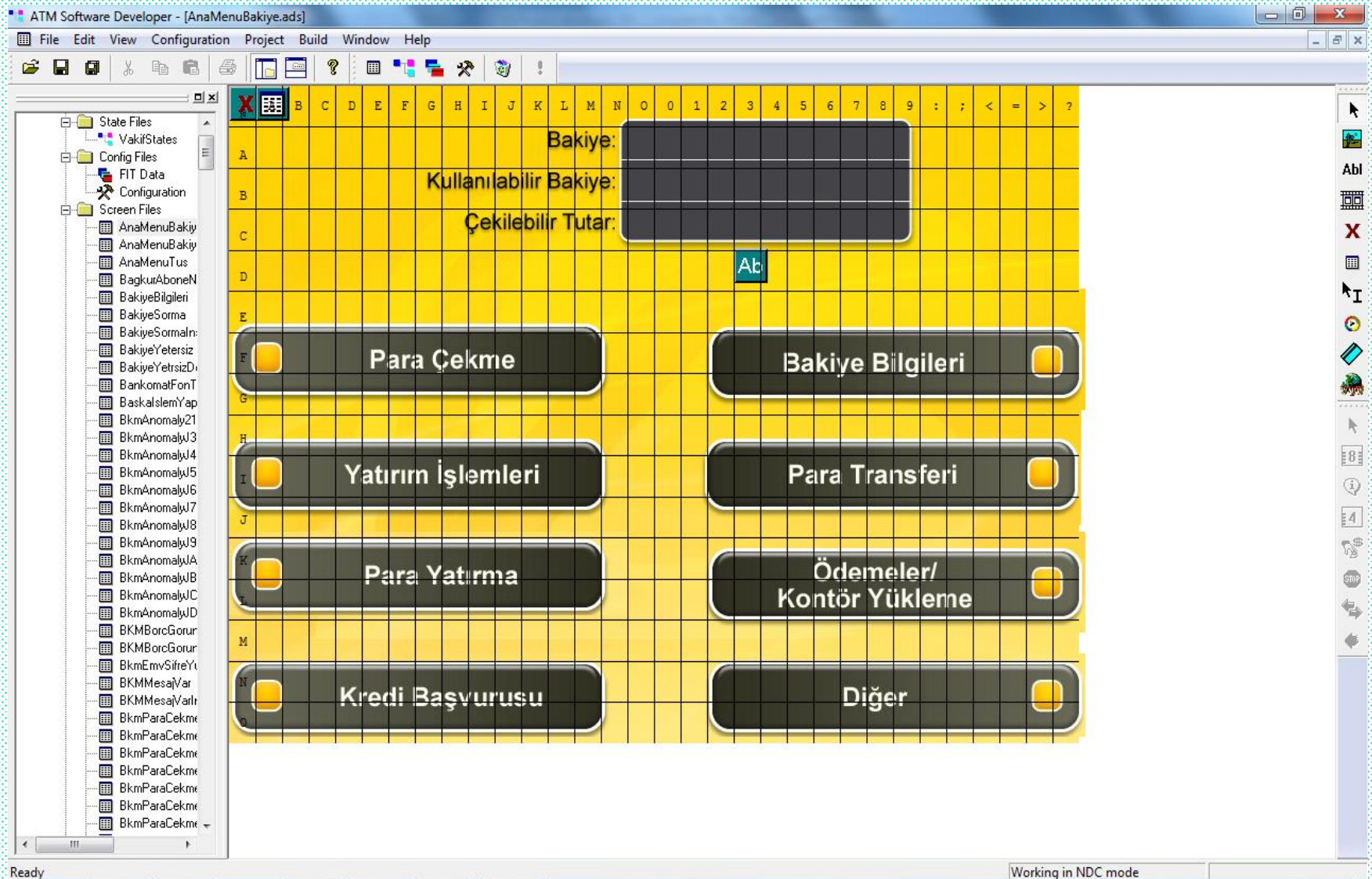
```
x|error T2002 : Next State Is Invalid !! <333 - KrediHesapYok>
|error T2002 : Next State Is Invalid !! <333 - KrediHesapYok>
error T2002 : Next State Is Invalid !! <333 - KrediHesapYok>
error T2002 : Next State Is Invalid !! <332 - HataliHesapNo>
error T2002 : Next State Is Invalid !! <332 - HataliHesapNo>
error T2002 : Next State Is Invalid !! <332 - HataliHesapNo>
Done...
```

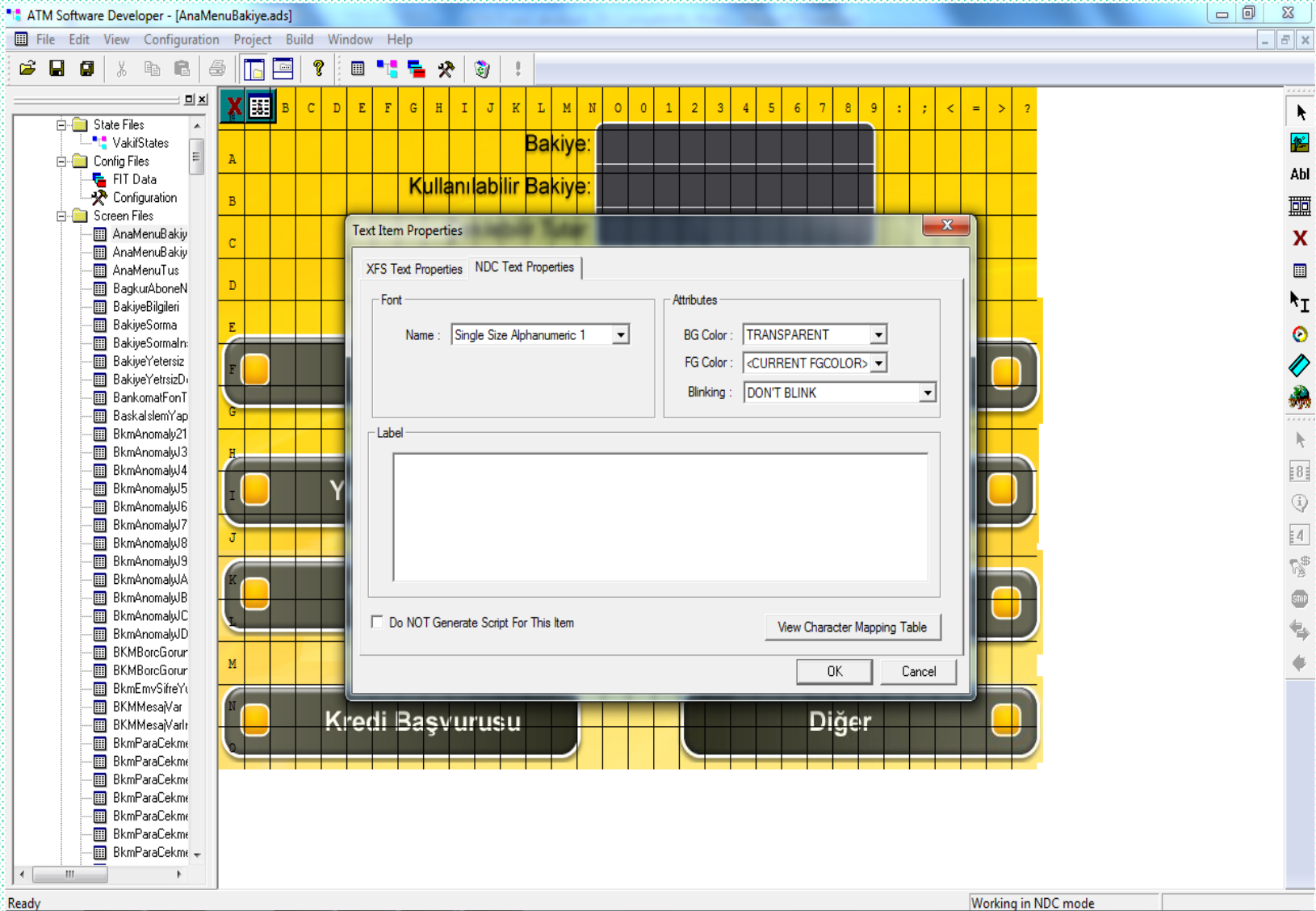
The status bar at the bottom indicates "Ready" and "Working in NDC mode".

# Screen Design

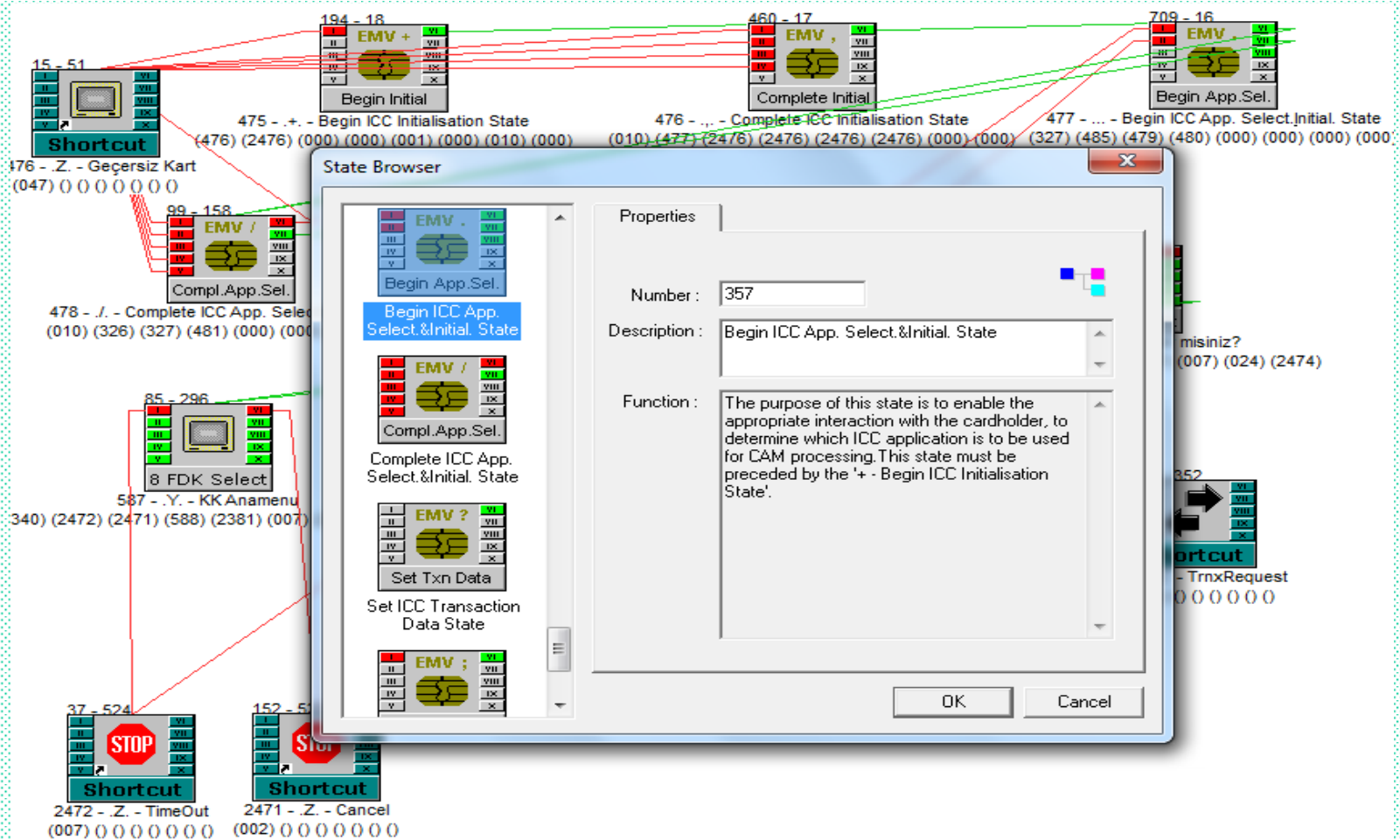
- Visual screen design
- Support of bitmap, text, animation objects.
- Easy design of idle animation screens using animation object.

# Constructing and Adjusting Screens by Toolbars





# Compliant with NDC+ EMV CAM Exits Standards



## ATM Switch Integration

- Helps to Define Host Response Codes Mapping to States.
- Provides Journal, Receipt Design Visually.
- Give Dynamic Ways to Define Update Data for Screens, Receipt and Journals.



# Defining Response Codes from Host

ATM Software Developer - [VakifStates]

File Edit View Configuration Project Build Window Help

Group Members

MainFlow,Car  
General Timec  
Debit Cash Wi  
Debit Main Flc  
Debit Cash Wi  
Debit Cash Wi

Response Codes Map

Transaction Msg Type: TA49-Ödemeler>Prim>Hesaptan>Kurum tipi (SSK ya da ...)

Host Response Code	Transaction Action Code
434-İsleminiz tamamlanmıştır. (Hesaptan)	(198) => 0-İsleminiz Tamamlanmıştır
458-İsleminiz tamamlanmıştır. (Nakit)	(198) => 0-İsleminiz Tamamlanmıştır
411-Acıklama_ekrani (Hesaptan)	(190) => 215-AcıklamaEkranıHesaptan
412-Kurum_listesi (Hesaptan)	(681) => 216-KurumListesiHesaptan
413-Kurum_listesi_diger (Hesaptan)	(682) => 217-KurumListesiHesaptanDiger
414-Acıklama_ekrani (Nakit)	(191) => 218-AcıklamaEkranıNakit
415-Kurum_listesi (Nakit)	(685) => 219-KurumListesiNakit
417-Lütfen SSK sicil numaranızı girip giriş tusuna basınız.FaturaSSKSicil...	(697) => 220-SSKSicilGirişHesaptan
418-Lütfen Bagkur numaranızı girip giriş tusuna basınız.BagkurAbone...	(703) => 221-BagkurNumGirişHesaptan
419-Lütfen tc kimlik numaranızı girip giriş tusuna basınız.FaturaSSKDo...	(701) => 222-TcKimlikGirişHesaptan
416-Kurum_listesi_diger (Nakit)	(686) => 223-KurumListesiDigerNakit
420-Lütfen tc kimlik numaranızı girip giriş tusuna basınız.Hatalı giriş ya...	(728) => 224-TcKimlikHatalı
421-tc kimlik no girildi. Hatalı Giriş Hata.jpg (Hesaptan)	(730) => 225-TcHatalıHesaptan
422-Lütfen ödeme döneminizi girip giriş tusuna basınız.FaturaSSKDone...	(702) => 226-SSKDonemGir
424-Girdiğiniz kuruma ait fatura bilgisi bulunmamaktadır. (Hesaptan)	(193) => 227-FaturaBulunamadıHesaptan
425-Girdiğiniz kuruma ait bilgi bulunmamaktadır. (Hesaptan)	(192) => 228-KurumBilgiYokHesaptan
426-Seçtiğiniz işlem geçici olarak hizmet dışıdır. (Hesaptan)	(232) => 229-İşlemHizmetDışıHesaptan
427-Lütfen ödeme ypmk prim tutarını girip giriş tusuna basnz. (İstge bgli öd...	(693) => 230-SSKÖdemeİstegeBağlıHesap
428-Lütfen ödeme tiri sıra numarsını on rrs husna basnz. FaturaSSKSicil...	(694) => 231-SSKSicilÖdemeHesaptan

Update Insert Delete

error T2002 : Next State Is Invalid !! <333 - KrediHesapYok>  
error T2002 : Next State Is Invalid !! <333 - KrediHesapYok>  
error T2002 : Next State Is Invalid !! <333 - KrediHesapYok>  
error T2002 : Next State Is Invalid !! <332 - HatalıHesapNo>  
error T2002 : Next State Is Invalid !! <332 - HatalıHesapNo>  
error T2002 : Next State Is Invalid !! <332 - HatalıHesapNo>  
Done...

Ready Working in NDC mode

# Defining Response Code Parameters

ATM Software Developer - [VakifStates]

File Edit View Configuration Project Build Window Help

Response Codes Mapper

Host Response Code: 415-Kurum\_listesi (Nakit)      ATM Reply Action Code: 219-KurumListesiNakit      [Update]

ATM Response Parameters

New Reply Action Code: 219      Action Description: KurumListesiNakit

Update Screen: 66-KurumListesiHEsaptanScreen      Next State: 685-{0demelerPrimNakit} -> (KurumKoduSeç)

Card Ret Flag: 0-Return card      Function ID: 5-Set next state and print

Journal Flag: 0-Do not print      Receipt Flag: 0-Do not print

[Update] [Insert New] [Cancel Insert] [Delete]      [Design] [Design]

Update Screen

New Screen Number:      Screen Definition: KurumListesiHEsaptanScreen

##ACCEPTEDAMOUNT	##FONBAKIYE	##MSI1
##ATM	##HATA1	##MSI10
##BAK1	##HATA2	##MSI2
##BAK2	##HATA3	##MSI3
##BAK3	##HES1	##MSI4
##BAKIYE	##HES2	##MSI5
##BKMMesaj1	##HES3	##MSI6
##BKMMesaj2	##HES4	##MSI7
##BKMMesaj3	##HESAPNO	##MSI8
##CEKILEBILIR	##SLEMNO	##MSI9
##CRCDST	##SLEMMIKTARI	##MSR1
##CRDUE	##KASETKUPUR	##MSR10
##CRFPAY	##KREDIBAKIYE	##MSR2
##CRINSPAY	##KULBAKIYE	##MSR3
##CRINSURANCE	##MAXCRTUTAR	##MSR4
##CRINTEREST	##MAXVADE	##MSR5
##CRMONTLY	##MINCRTUTAR	##MSR6
##CRTOTAL	##MINMUMTUTAR	##MSR7
##CUSTNO	##MINVADE	##MSR8

[Konum] [X-Y] [Insert New] [Cancel Insert] [Update] [Delete]      [Delete Item] [Clear All Items] [Write Screen]

Graphic Screen

Kod      Kod      Kod

##BAKIYE	##BAKIYE	##BAKIYE
##BAKIYE	##BAKIYE	##BAKIYE
##BAKIYE	##BAKIYE	##BAKIYE
##BAKIYE	##BAKIYE	##BAKIYE

I  
H  
G  
F

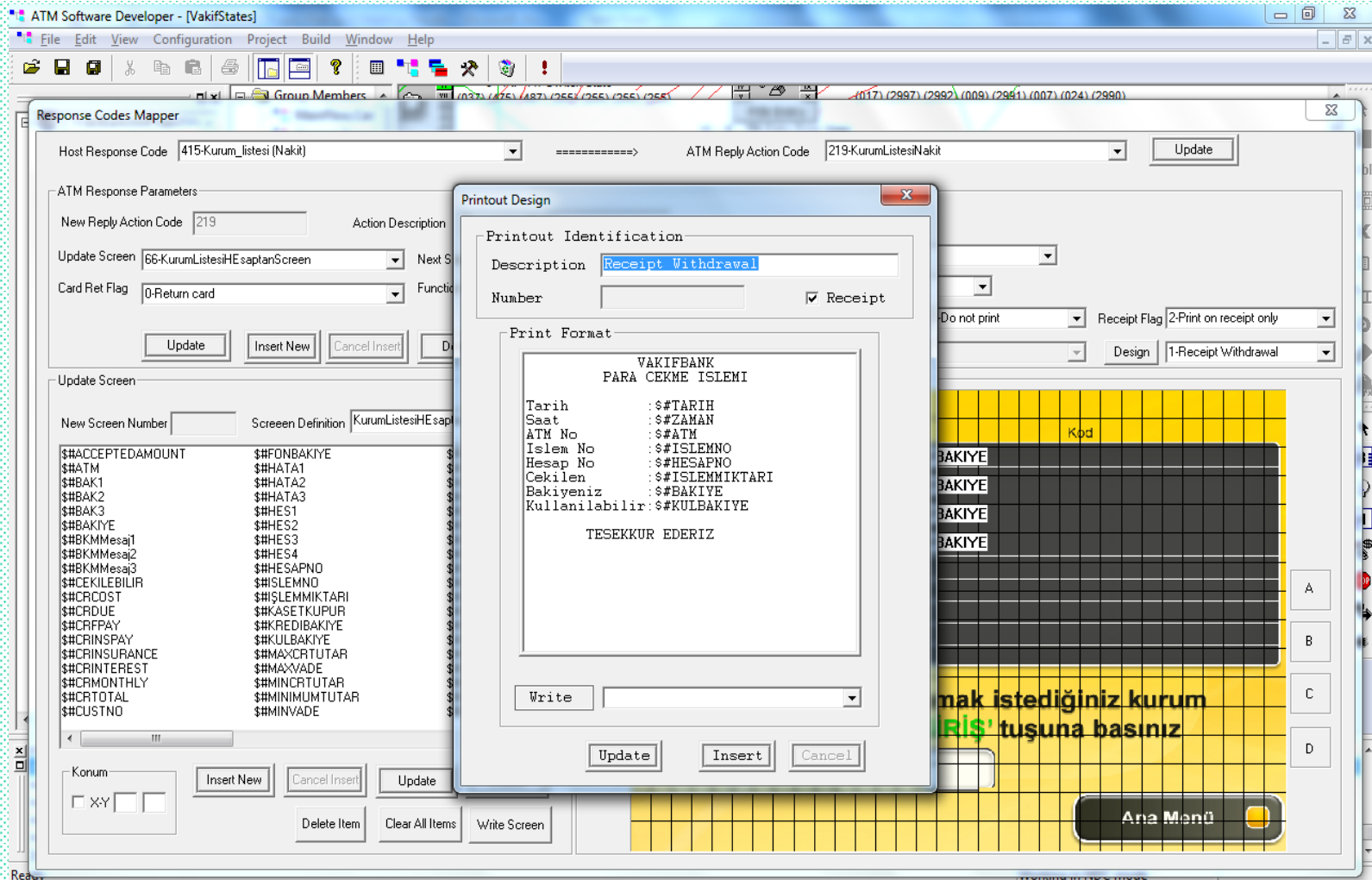
A  
B  
C  
D

Lütfen ödeme yapmak istediğiniz kurum kodunu girip, 'GİRİŞ' tuşuna basınız

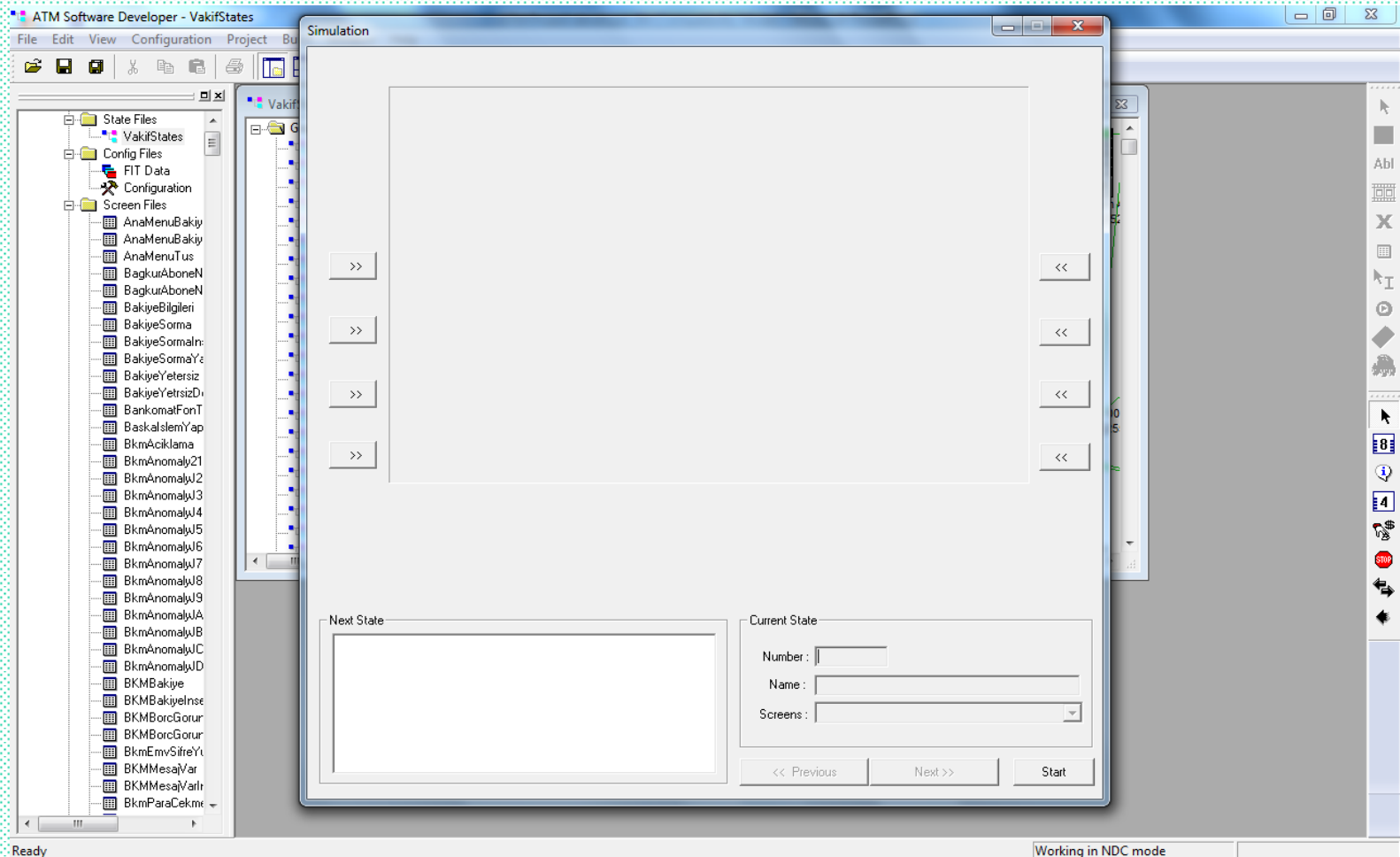
Ana Menü



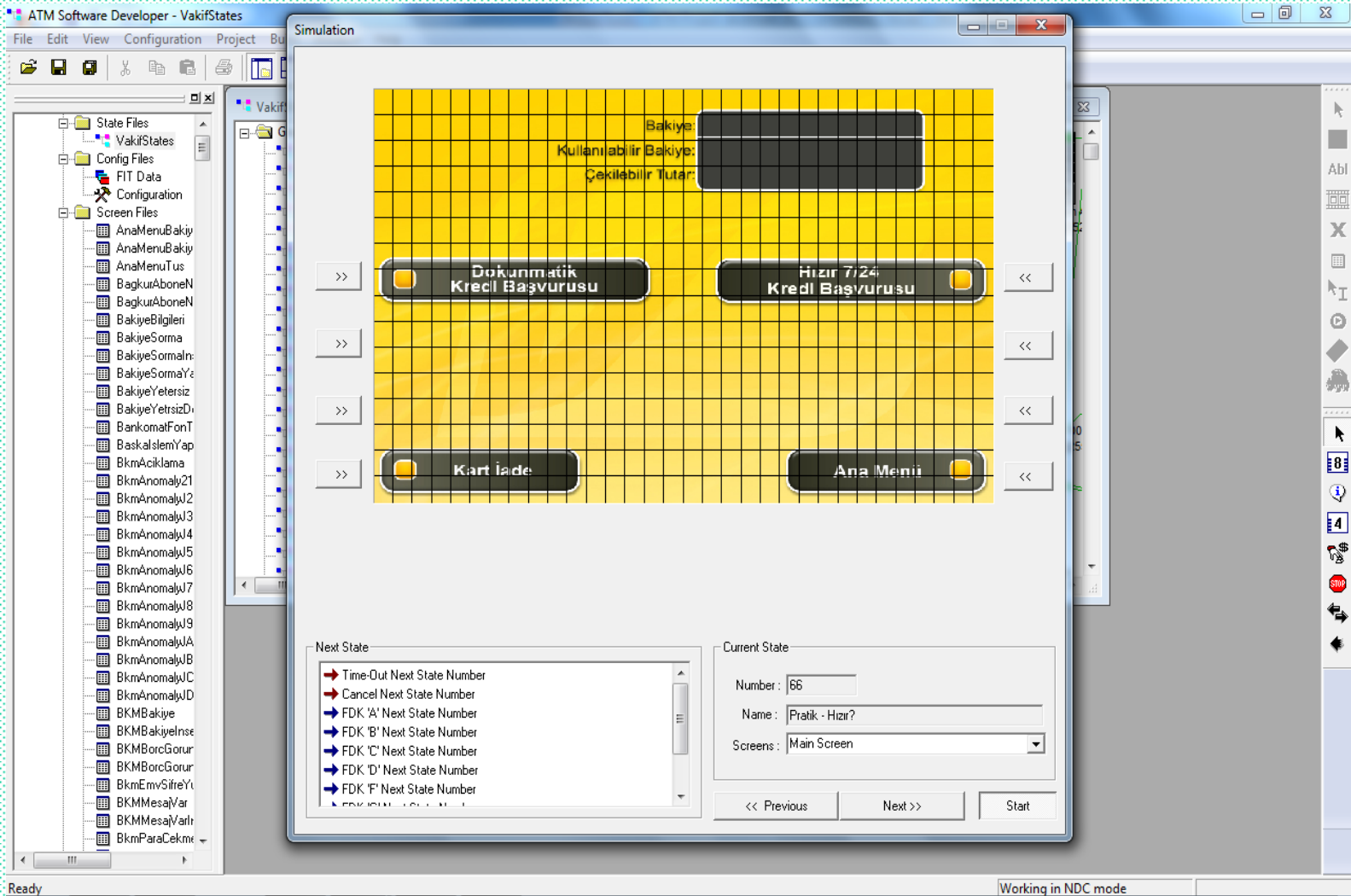
# Designing Dynamicly Receipt and Journal



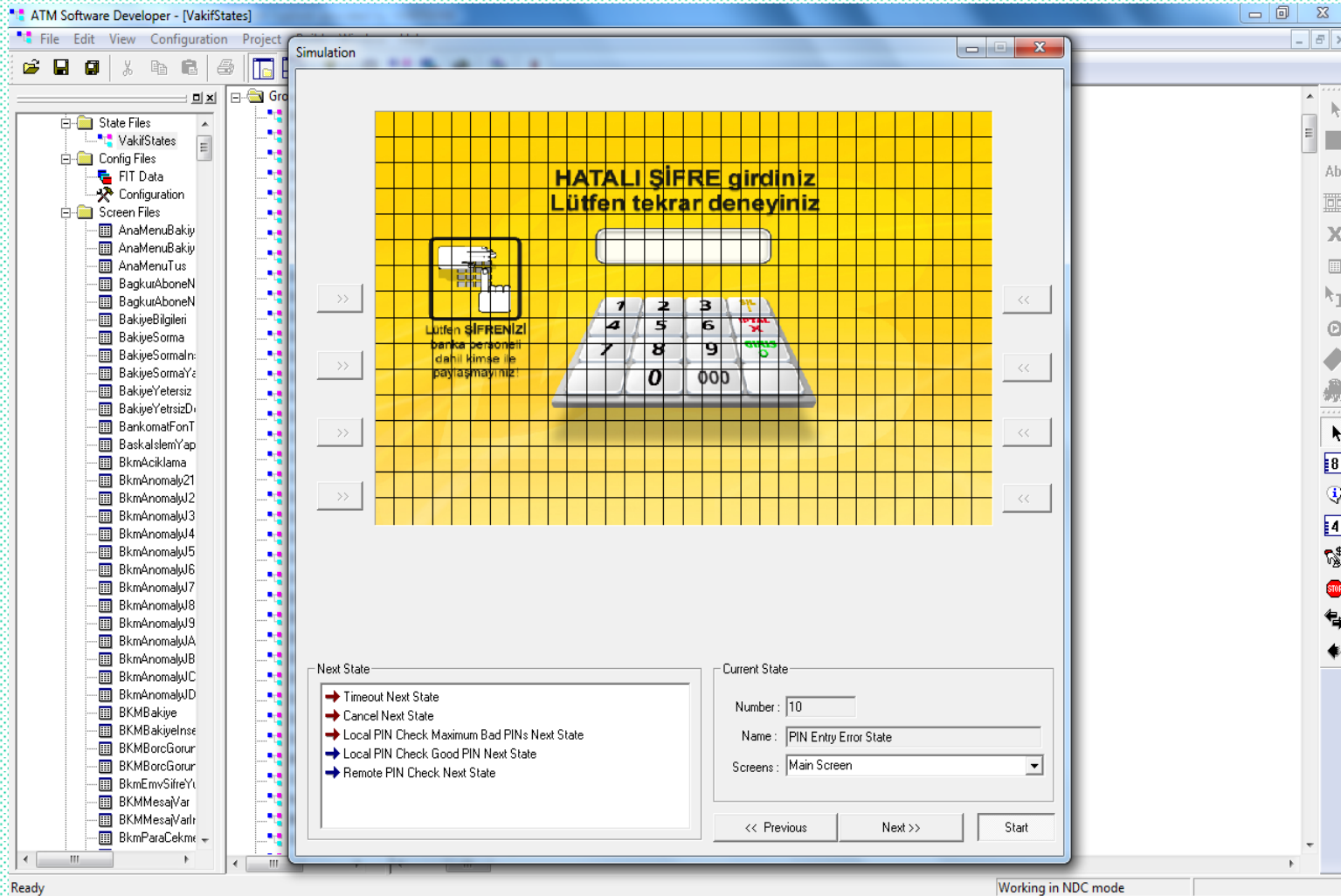
# Simulation of Project



# Simulation of Project by Navigating



# Simulation of Project by Navigating



# Simulation of Missing Parts

