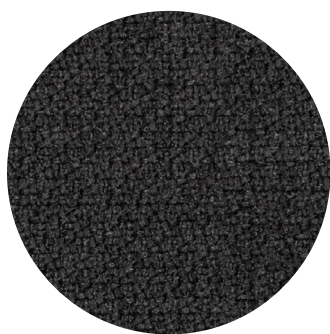


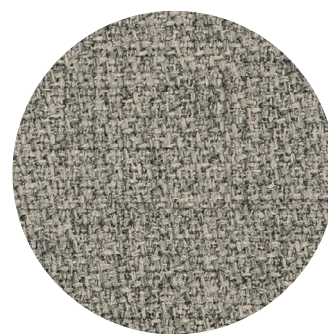
Group M Mobles 114 color selection in stock



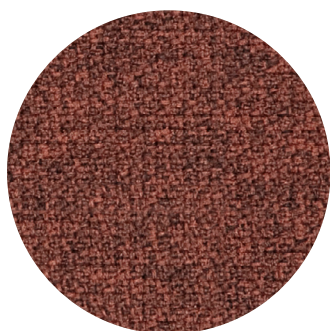
Dark Grey 60021



Brown 61103



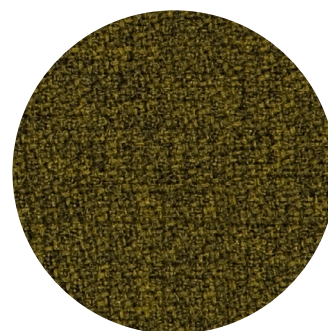
Light Grey 61104



Terracotta 61151



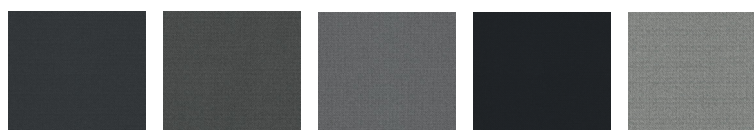
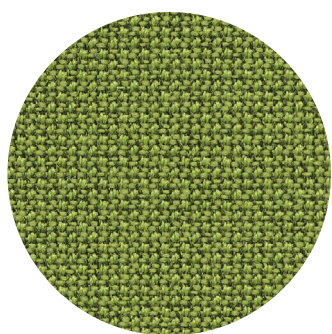
Mustard 62057



Green 68165

Name	Gabriel Step Melange	
Material	Trevira CS	100%
Weight	470 g/lm · (15.16 oz/lin.yd.)	
Width	140 cm · (55")	
Abrasion resistance	rubs · EN ISO 12947-2 (Martindale)	100,000
	double rubs wyzenbeek (ASTM D4157-07) (Heavy duty upholstery)	100,000
Pilling	scale 1-5 max. 5 · EN ISO 12945 - 2	
Maintenance	Wash or dry cleaning. Can be wiped with Virkon S, Actichlor Plus, Prime Source ren 93 or Ethanol (70-85%). Always follow the manufacturer's instructions and finish by wiping with a damp cloth. 60°C · Shrinkage max. 3,0% / 74°C · Shrinkage max. 5,0%	
Flammability	CA TB 117 - 2013 BS 7176 Medium Hazard. AM 18 - NF D 60-013-(only for fabric) · DIN 4102 B1 · NFP 92-503/504/505 M1. BS EN 1021 1&2 · BS 5852 Part 1 0,1 Cigarette & match · BS 5852 Crib 5. Class Uno UNI 9175 Class 1 EMME · ÖNORM B 3825 - B1 - 3800 - Q1 UK. FAR/JAR 25.853 (a) (i) (ii) · IMO MSC 307(88) Annex 1 part 8. MED Certificate IMO · DIN EN 13501 - 1 B-s1, d0. Will also pass other flammability standards. Flame retardant performance is dependent upon the foam used.	

Group A Gabriel Cura



60019

60109

60110

60111

60112



61168

61169

62082

62083

62084



63012

63078

64013

64193

64194

64196

64197

65104



65105

65106

66165

66166

66168

66169

66170

67084



68180

68181

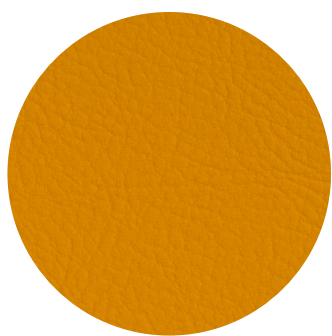
68182

68183

68184

Material	post - costumer recycled polyester · polyester	98% · 2%
Weight	420 g/lm · (13.55 oz/lin.yd.)	
Width	140 cm · (55")	
Abrasion resistance	rubs · BS EN 14465 · BS EN ISO 12947-2 (Martindale)	100,000
	double rubs wyzenbeek (ASTM D4157) (Heavy Duty Upholstery)	100,000
Pilling	scale 1-5 max. 5 · EN ISO 12945-2	
Maintenance	wash or dry cleaning Flame retardant performance is dependent upon the foam used. Contain no Flame Retardant chemical.	
Flammability	EN 1021 1&2 · BS 5852 0&1 · CA TB 117 - 2013 Will also pass other flammability standards. 40°C · Shrinkage max. 1,0% 60°C · Shrinkage max. 2,0%	

Group A Spradling Valencia



107-8032 107-1049 107-1001 107-0002 107-0034



107-9001 107-6002 107-0035 107-2001 107-2062



107-4040 107-4043 107-9035 107-2074 107-2075 107-6003 107-6019 107-6013



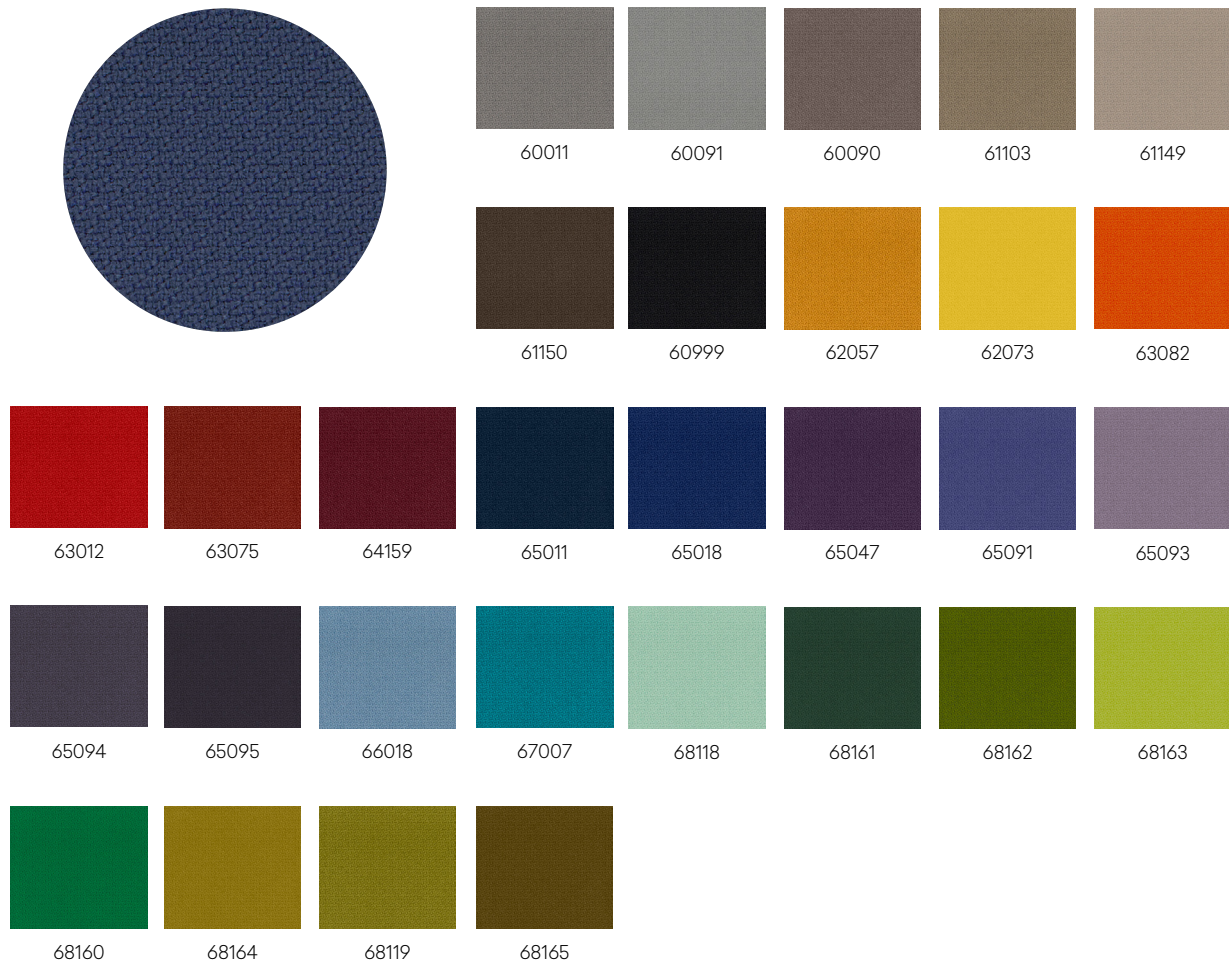
107-6012 107-2020 107-2002 107-7001 107-5057 107-5056 107-5041 107-5001



107-5069 107-3069 107-3067 107-3001

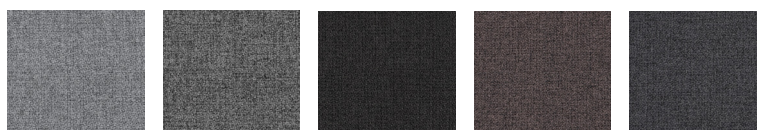
Material	Vinyl / Urethane
Weight	650 g/m ²
Width	137 cm · (53")
Abrasion resistance	>300.000 cycled (Martindale)
Pilling	scale 1-5 max. 5 · EN ISO 12945 - 2
Maintenance	For light soiling, a solution of 10% household liquid dishsoap in warm water, applied with a soft damp cloth. Rinse with clean water and dry. Do not use with alcohol based cleaning agents.
Flammability	EN 1021 1&2 · ES: UNE 23.727-90 1R/M.2 · FR: NF P 92-503/M2 DE: DIN 4102 B2 · AT: ÖNORM B 3825, Gruppe 1 - Schwerbrennbares IT: UNI 9175 (1987) / UNI 9175/FA1 (1994) Classe 1.IM (UNO I EMME) AT: ÖNORM A 3800 Teil 1, Qualmbildungsklasse Q1 - schwachqualmend IMO FTP 2010 Code MSC.307 (88) Part 8 3.1 & 3.2 · US: FMVSS 302 US: FAR 25/853 · ECE R118.02 (replaces Directive 95/28/CE) 6, 7 & 8 EN 71-2:2006+A1:2007 - Safety of Toys - Parte 2: Flammability

Group B Gabriel Step



Material	Trevira CS 100%
Weight	470 g/lm · (15.16 oz/lin.yd.)
Width	140 cm · (55")
Abrasion resistance	rubs · EN ISO 12947-2 (Martindale) 100,000 double rubs wyzenbeek (ASTM D4157-07) (Heavy duty upholstery) 100,000
Pilling	scale 1-5 max. 5 · EN ISO 12945 - 2
Maintenance	Wash or dry cleaning. Can be wiped with Virkon S, Actichlor Plus, Prime Source ren 93 or Ethanol (70-85%). Always follow the manufacturer's instructions and finish by wiping with a damp cloth. 60°C · Shrinkage max. 3,0% / 74°C · Shrinkage max. 5,0%
Flammability	CA TB 117 - 2013 BS 7176 Medium Hazard. AM 18 - NF D 60-013-(only for fabric) · DIN 4102 B1 · NFP 92-503/504/505 M1. BS EN 1021 1&2 · BS 5852 Part 1 0,1 Cigarette & match · BS 5852 Crib 5. Class Uno UNI 9175 Class 1 EMME · ÖNORM B 3825 - B1 - 3800 - Q1 UK. FAR/JAR 25.853 (a) (i) (ii) · IMO MSC 307(88) Annex 1 part 8. MED Certificate IMO · DIN EN 13501 - 1 B-s1, d0. Will also pass other flammability standards. Flame retardant performance is dependent upon the foam used.

Group B Gabriel Step Melange



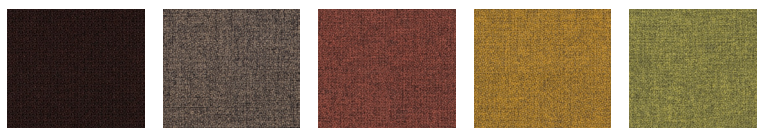
60004

60011

60021

60090

60092



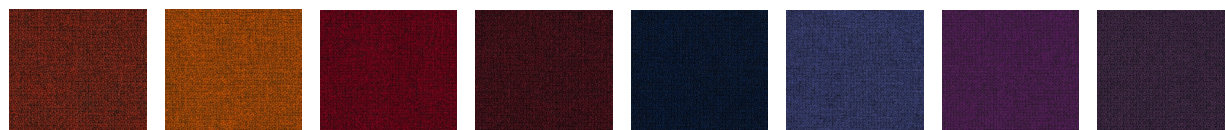
61102

61103

61151

62057

62073



63075

63082

64013

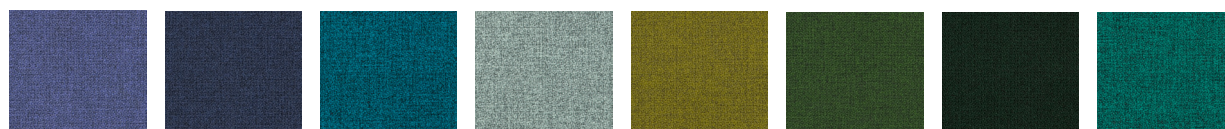
64159

65011

65018

65023

65047



65090

66148

67007

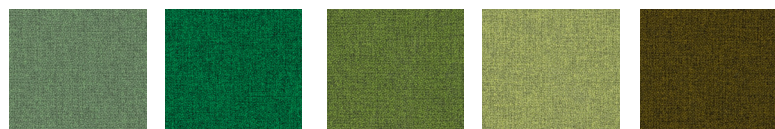
68118

68119

68120

68121

68157



68159

68160

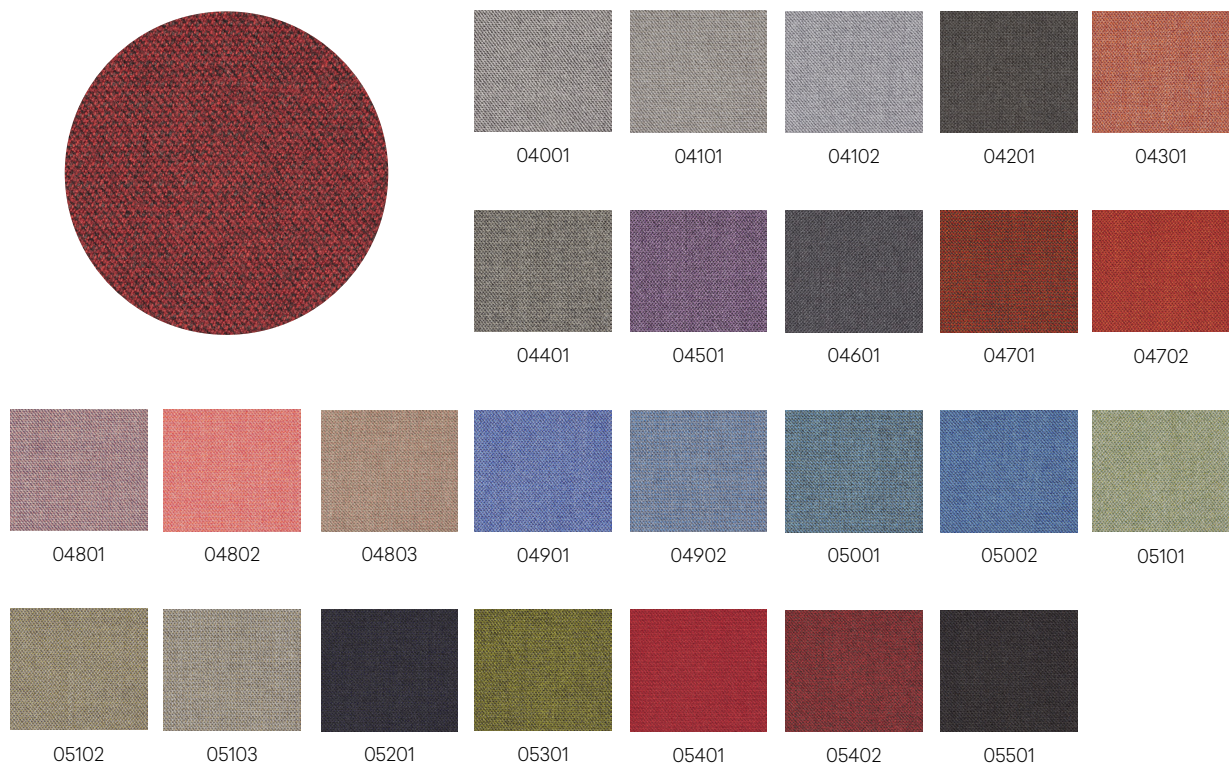
68162

68163

68165

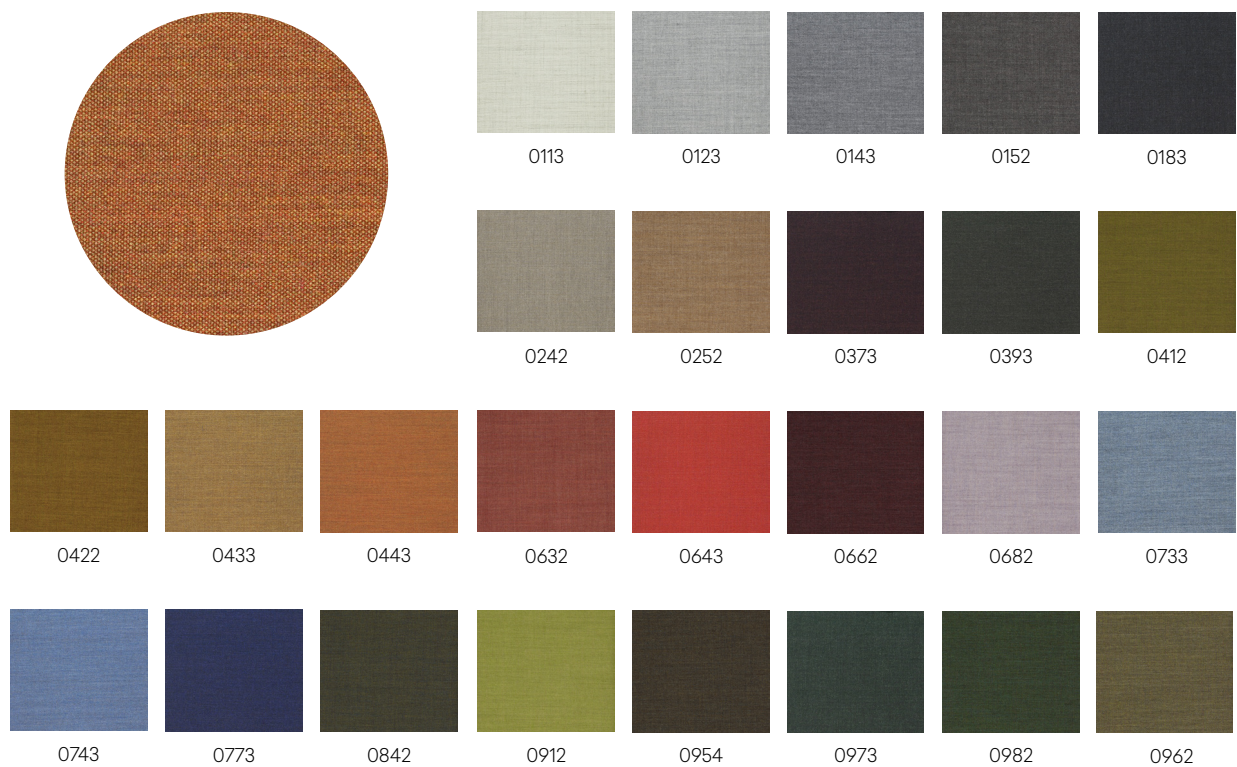
Material	Trevira CS	100%
Weight	470 g/lm · (15.16 oz/lin.yd.)	
Width	140 cm · (55")	
Abrasion resistance	rubs · EN ISO 12947-2 (Martindale)	100,000
	double rubs wyzenbeek (ASTM D4157-07) (Heavy duty upholstery)	100,000
Pilling	scale 1-5 max. 5 · EN ISO 12945 - 2	
Maintenance	Wash or dry cleaning. Can be wiped with Virkon S, Actichlor Plus, Prime Source ren 93 or Ethanol (70-85%). Always follow the manufacturer's instructions and finish by wiping with a damp cloth. 60°C · Shrinkage max. 3,0% / 74°C · Shrinkage max. 5,0%	
Flammability	CA TB 117 - 2013 BS 7176 Medium Hazard. AM 18 - NF D 60-013-(only for fabric) · DIN 4102 B1 · NFP 92-503/504/505 M1. BS EN 1021 1&2 · BS 5852 Part 1 0,1 Cigarette & match · BS 5852 Crib 5. Class Uno UNI 9175 Class 1 EMME · ÖNORM B 3825 - B1 - 3800 - Q1 UK. FAR/JAR 25.853 (a) (i) (ii) · IMO MSC 307(88) Annex 1 part 8. MED Certificate IMO · DIN EN 13501 - 1 B-s1, d0. Will also pass other flammability standards. Flame retardant performance is dependent upon the foam used.	

Group C Gabriel Capture



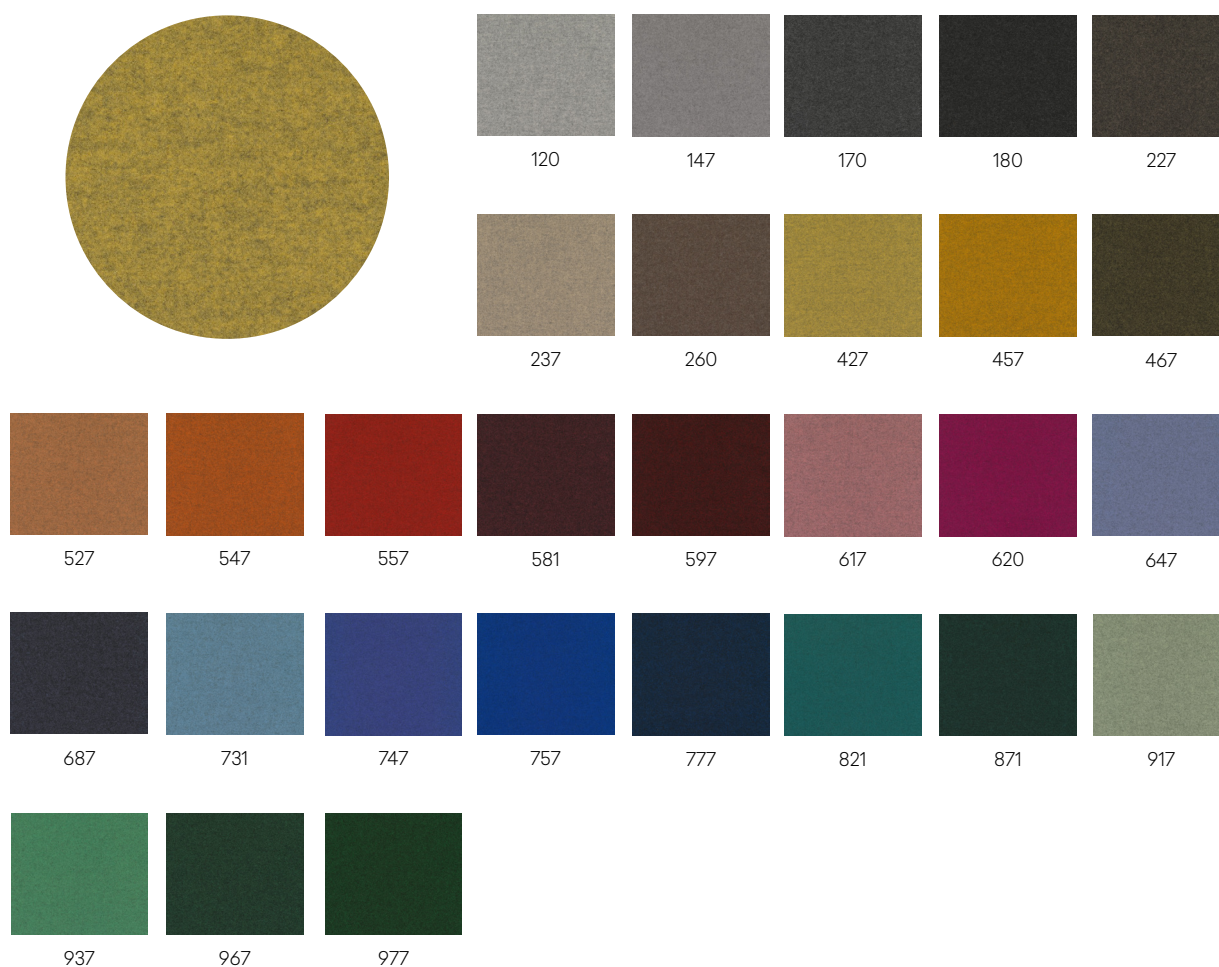
Material	New Zealand wool · polyamide	85% · 15%
Weight	475 g/lm 3 (15.32 oz/lin.yd.)	
Width	140 cm · (55")	
Abrasion resistance	rubs · BS EN 14465 · BS EN ISO 12947 - 2 (Martindale) rubs 200,000 Martindale · ASTM D4966 - 02 (Heavy Duty Upholstery) 200,000	
Pilling	scale 1-5 max. 5 · EN ISO 12945 - 2	
Maintenance	dry cleaning	
Flammability	EN 1021 1&2 · BS 5852 0&1 · CA TB 117 - 2013. Class Uno UNI 9175 Class 1 EMME Will also pass other flammability standards. Flame retardant performance is dependent upon the foam used. Contain no Flame Retardant chemical.	

Group C Kvadrat Remix 2



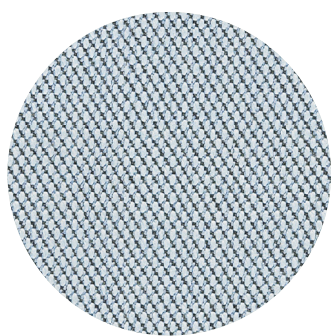
Material	New wool · Nylon	90% · 10%
Weight	415 g/lm · (14.63 oz/lin.yd.)	
Width	138 cm · (54")	
Abrasion resistance	rubs · EN ISO 12947 (Martindale)	100.000
Pilling	Note 4, EN ISO 12945	
Maintenance	Vacuuming and dry cleaning	
Flammability	AS/NZS 1530.3 · BS 5852 Crib 5 with treatment · BS 5852 part 1. EN 1021-1/2 · IMO FTP Code 2010: Part 8 · NF D 60 013 · NFPA 260. Önorm B1/Q1 · UNI 9175 1IM · US Cal. Bull. 117-2013. No use of brominated flame retardants	

Group D Kvadrat Divina Melange



Material	New wool	100%
Weight	820 g/lin.m	
Width	150 cm · (59")	
Abrasion resistance	rubs · EN ISO 12947 (Martindale)	45.000
Pilling	Note 3, EN ISO 12945	
Maintenance	Vacuuming and dry cleaning	
Flammability	AS/NZS 1530.3, BS 5852 Crib 5, BS 5852 ignition source 3, BS 5852 part 1, BS 5867 part 2 type B, EN 1021-1/2, EN 13501, C-s1, d0, glued, NF D 60 013, NFPA 260, SN 198 898 5.3 with treatment *, UNI 9175 1IM, US Cal. Bull. 117-2013, ÖNORM B1/Q1	

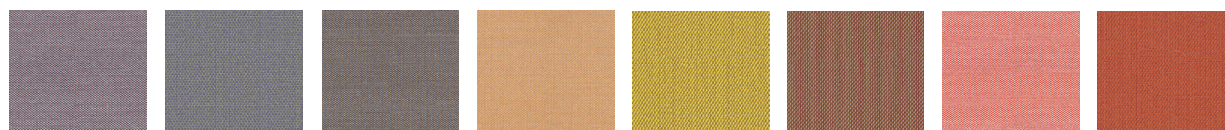
Group D Kvadrat Steelcut Trio 3



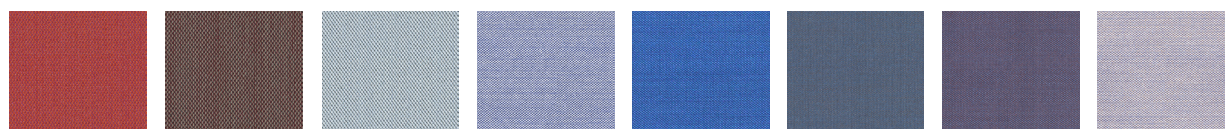
113 124 153 176 195



205 226 246 253 266



276 283 376 436 453 515 526 533



553 645 713 716 746 756 776 806



953 946 976 983 996

Material	New wool · Nylon	90% · 10%
Weight	770 g/lm · (27,16 oz/lin.yd.)	
Width	140 cm · (55")	
Abrasion resistance	rubs · EN ISO 12947 (Martindale)	100.000
Pilling	Note 4, EN ISO 12945	
Maintenance	Vacuuming and dry cleaning	
Flammability	AS/NZS 1530.3 · AS/NZS 3837 class 2 · BS 5852 Crib 5 with treatment BS 5852 part 1 · DIN 4102 B2 · EN 1021-1/2 · IMO FTP Code 2010: Part 8 NF D 60 013 · NFPA 260 · Önorm B1/Q1 · SN 198 898 5.3 with treatment UNI 9175 1IM · US Cal. Bull. 117-2013 No use of brominated flameretardants	