



Plastic Surgery
Instruments

adson-brown-curved-delicate-tissue-forcep-9x9-teeth



adson-brown-delicate-tissue-forcep-7x7-teeth



adson-brown-delicate-tissue-forcep-9x9-teeth-



adson-brown-delicate-tissue-with-t.c.-insert



adson-cross-serrated



adson-crow-coagating-forcep-insulated-12cm



adson-dressing-forcep-delicate-serrated-2



adson-forcep-cross-seratted-1x2-teeth-2



adson-graefe-delicate-tissue-forcep-2



adson-hook-20cm-3mm



adson-t.c.-delicate-dressing-forcep-serrated-2-



adson-t.c.-delicate-dressing-forcep-smooth



adson-t.c.-delicate-tissue-and-suture-forcep-1x2-teeth-2



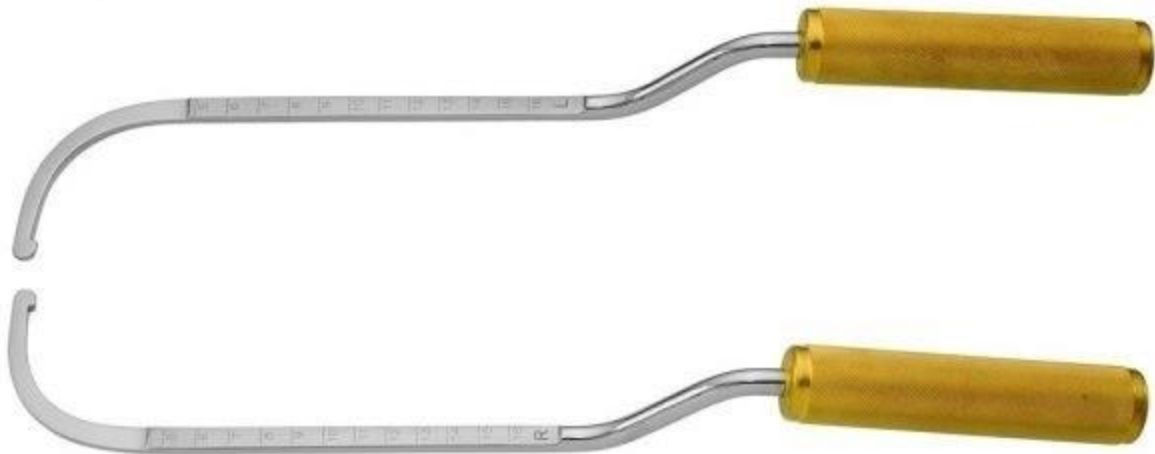
adson-tissue-forcep-1x2-teeth-with-tying-platform-12cm-2



adson-tissue-forcep-delicate-1x2-teeth-2-



agris-dingmann-submammary-dissector-35cm-2



alar-retractor-15cm-22x13mm



anderson-bear-claw-retractor-12cm



anterior-spondylosis-operation-retractor-24cm-2



atraumatic-breast-dissector-36cm



aufricht-nasal-retractor-18cm-45x7-10mm



aufricht-retractor-with-fiber-optic-illumination-20cm-5



aufricht-walter-nasal-retractor-135cm



ballenger-septum-chisel-16cm



barsky-skin-hook-15cm-sharp



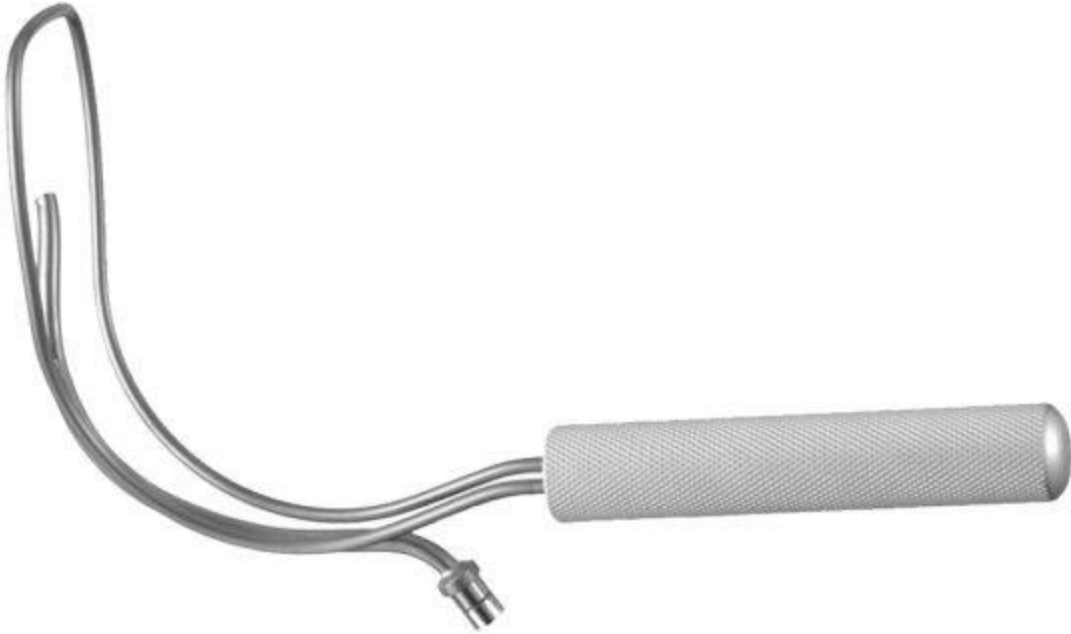
benicke-retractor-19cm-8mm-s-shped-tip-2



bergmann-retractor-hook-14cm



biggs-facelift-retractor-with-fiber-optic-23cm





biggs-mammaplasty-retractor-standard-blade



bishop-harmon-iris-forcep-0.4mm-1x2-teeth-9cm



blume-guarded-osteotome-18cm



boies-nasal-fracture-elevator-18cm-9mm-blunt



bonney-t.c.-forcep-straight-1x2-teeth-18cm



breast-and-facial-spreader-22cm



byrd-elevator-tip-13mm-23cm-aluminium-handle



castroviejo-suturing-forcep-1x2-teeth-0.9mm-tip



c-circular-breast-retractor-insulated-with-fiber-optic



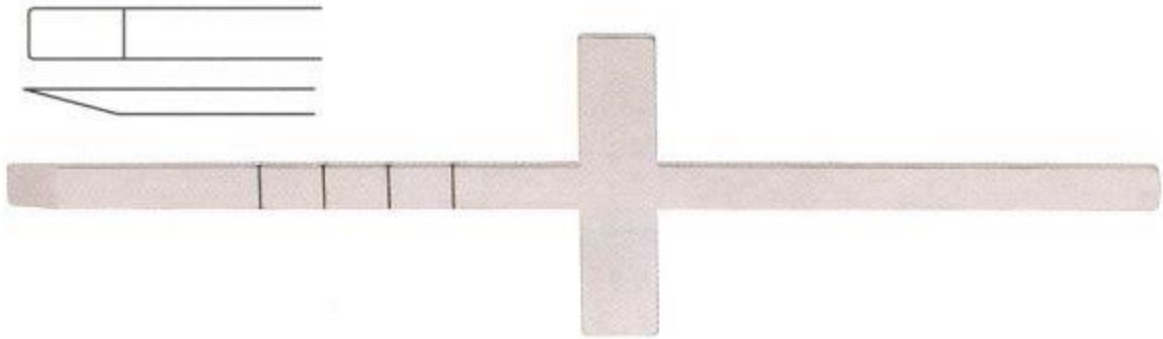
c-circular-breast-retractor-with-fiber-optic-2



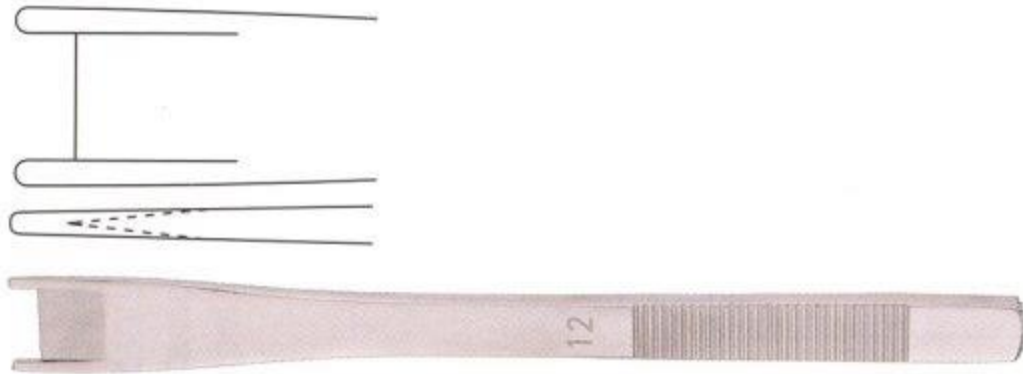
cerkes-weighted-nasal-retractor



cincel-cottle-chisel-18cm-cross-bar-graduated



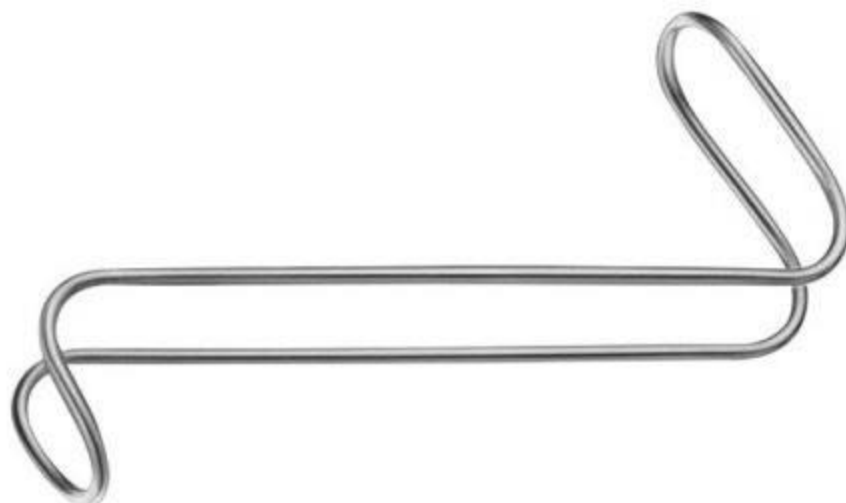
cinelli-guarded-osteotome-16cm



cohen-periosteal-elevator-retractor-24cm



collin-hartmann-retractor-s-shaped-16cm



collin-retractor-165cm-set-of-2-blade-



converse-alar-retractor-12cm-double-ended



converse-nasal-retractor-10cm



converse-periosteal-elevator-raspatory-5mm-sharp-18cm



cope-retractor-18cm-double-ended



coronal-brow-lift-7-prongs-retractor-18cm



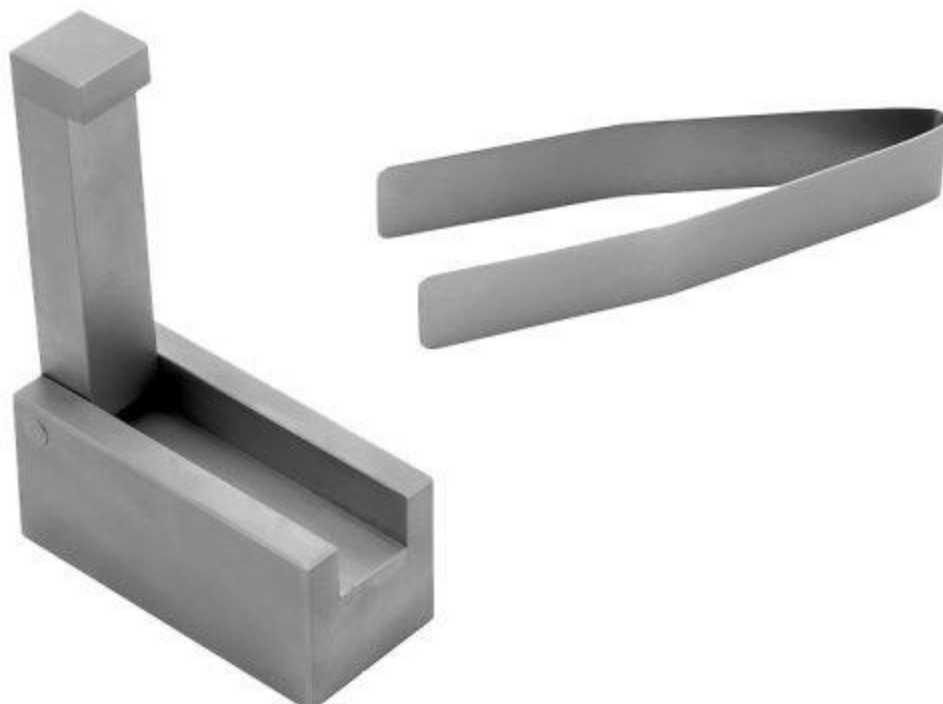
cottle-alar-and-skin-hook-14cm-2-prongs-4



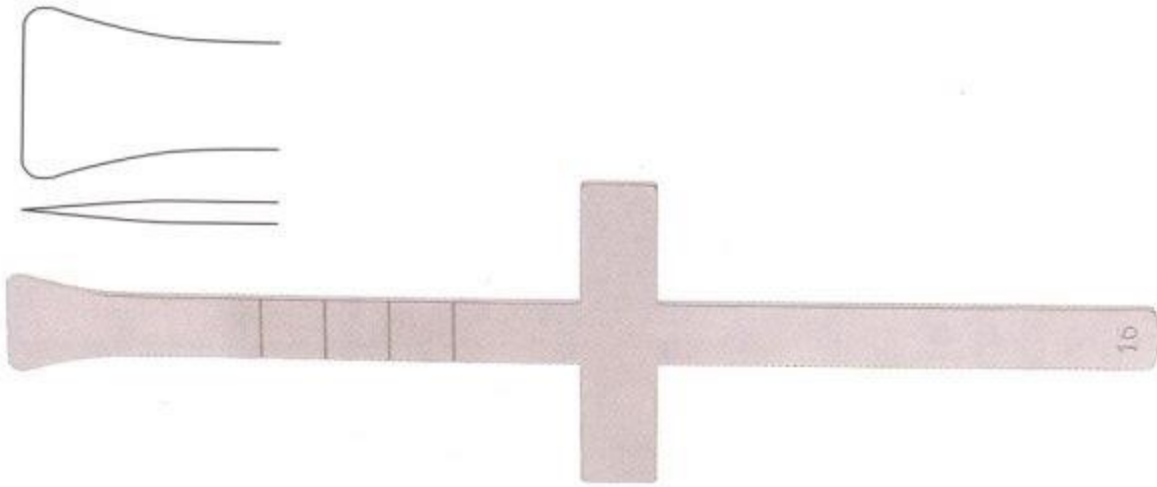
cottle-bone-leversplitting-osteotome-20cm-10mm-wide



cottle-cartilage-crusher-65x30x30mm



cottle-chisel-18cm-16mm-fishtail-shaped-end-



cottle-chisel-18cm-graduated-hollow-cut



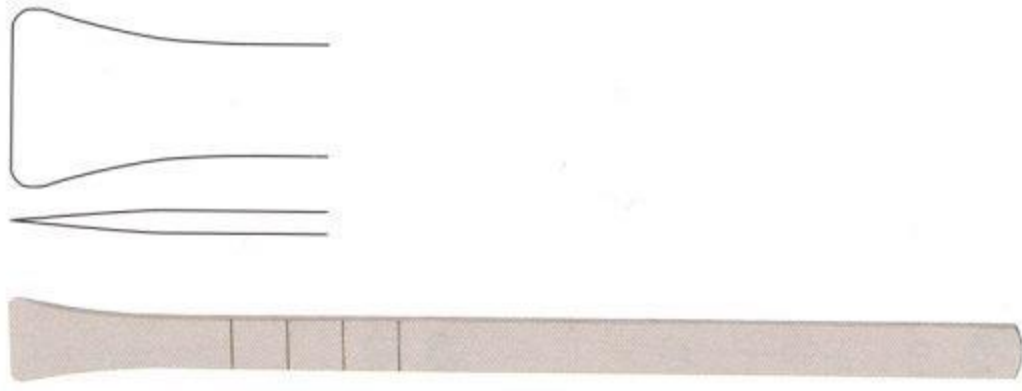
cottle-double-hook-15cm-sharp-3x4mm



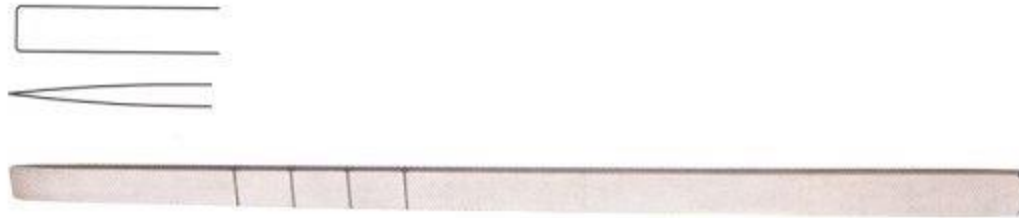
cottle-osteotome-18cm-6mm-wide-curved-graduated



cottle-osteotome-18cm-16mm-wide-fishtail-shaped-end



cottle-osteotome-18cm-straight-graduated



cottle-periosteal-elevator-23cm-double-ended-3mm-4mm-tip



cottle-skin-elevator-18cm-8mm-sharp



cottle-tenaculum-hook-16cm-angled



cottle-tunneling-elevatorraspatory-22cm



crile-hook-20cm-7mm



cronin-cheek-retractor-16cm-19mm-wide



cronin-lip-and-nostril-retractor-155cm



crow-coagulating-dressing-forcep-t.c.-insert-with-insulated-23cm



cushing-tissue-forcep-1x2-teeth-straight-18cm



cushing-forcep-t.c.-straight-18cm



cushing-tissue-forcep-1x2-teeth-straight-18cm



deaver-retractor



deaver-retractor-insulated-20cm-25mm



deaver-retractor-with-fiber-optic-illumination-20cm



debakey-at-vascular-forcep-straight-1.5mm-15cm-3



debakey-at-vascular-forcep-straight-2.0mm-20cm-2



desmarres-eye-lid-retractor-14cm



desmarres-eye-lid-retractor-14cm-insulated



desmarres-retractor-double-ended-15cm-2



desmarres-retractor-double-ended-15cm-insulated



dingmann-submammary-dissector-31cm



dingman-periosteal-elevatorraspatory-18cm



dressing-forcep-slim-straight



dressing-forcep-standard



dressings-forceps-standard-with-t.c.-insert



emmett-tenaculum-hook-22cm-sharp-2



emory-endoscopic-retractor



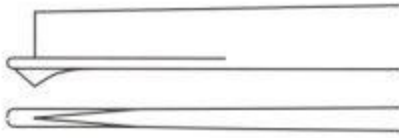
epker-osteotome



epstein-abdominoplasty-retractor-straight-
blade-with-fiber-optic-and-suction-tube



fanous-osteotome-19.5cm-with-guide-thorn



farabeuf-retractor-set-of-2-2



farabeuf-retractor-set-of-2-insulated



ferriera-style-retractor-with-smooth-end-185cm



fiber-optic-cable-3



flexible-neck-retractor-16cm-3



fomon-retractor-17cm



fomon-retractor-17cm-insulated



frazier-dura-and-skin-retractor-hook-125cm



freeman-coronal-lift-retractor-6-prongs-21cm



freeman-flap-retractor-20cm



freeman-flap-retractor-with-fiber-optic-guide-light



freeman-rake-retractor-18cm-



freer-double-hook-15cm-sharp-3x3mm-wide



freer-periosteal-elevator-19cm



freer-septum-chisel-15.5cm-stainless-steel



gerald-bayonet-dressing-forcep-19cm



gerald-bayonet-tissue-forcep-1x2-teeth-19cm-2



gerald-dressing-forcep-serrated-18cm



gerald-tissue-forcep-1x2-teeth-18cm



gillies-dura-and-skin-retractor-hook-19cm



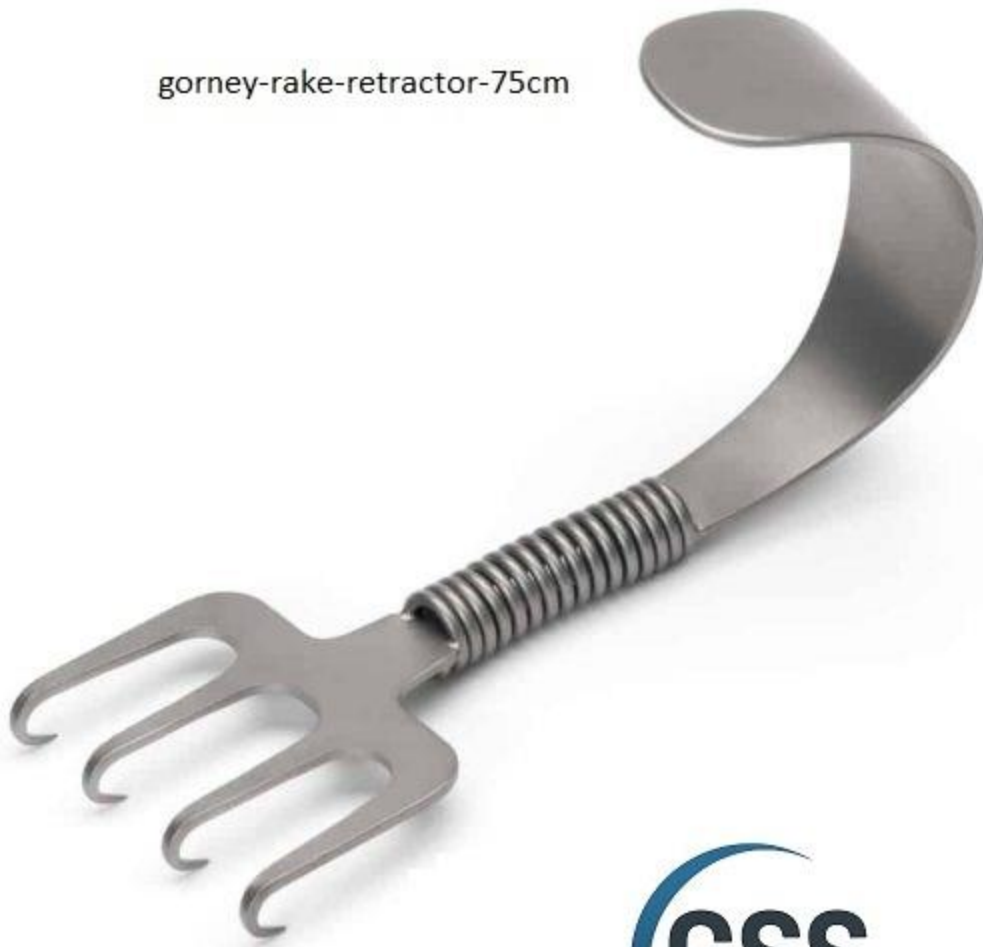
gillies-tissue-forcep-1x2-teeth-2



goldman-displacer-and-septum-elevator-17cm-5mm-wide



gorney-rake-retractor-75cm



gorney-septum-suction-elevator-20cm-2



green-fixation-forcep-10cm



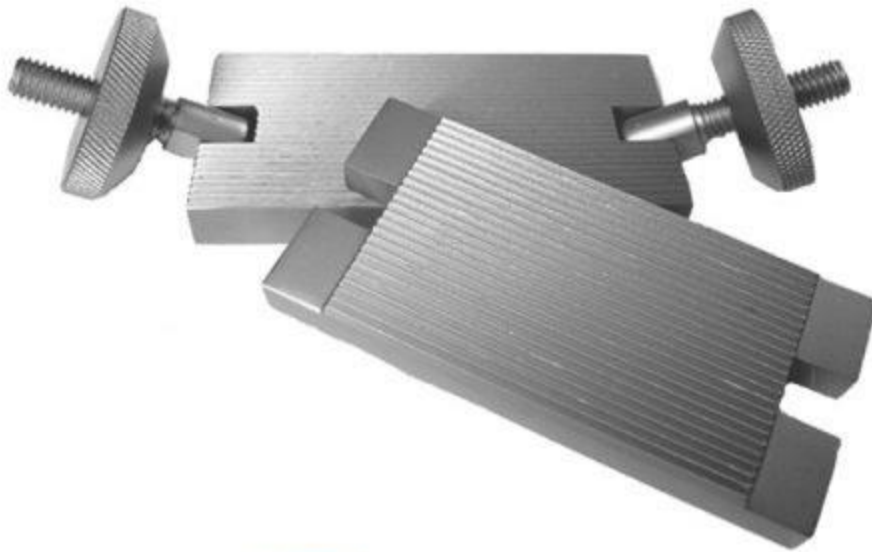
gruenwald-jansen-nasal-dressing-bayonet-forcep



gruenwald-jansen-nasal-tissue-1x2-teeth-bayonet-forcep



gubisch-cartilage-crusher-65x30mm-2



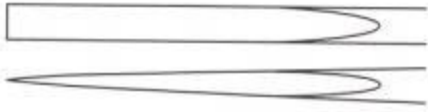
gubisch-fanous-nasal-osteotome-19.5cm



gubisch-kilner-double-nasal-hook-alar-retractor-2



gubisch-osteotome-18.5cm-3mm-wide



guthrie-double-retractor-hook-13cm-2



harrington-retractor-32cm-



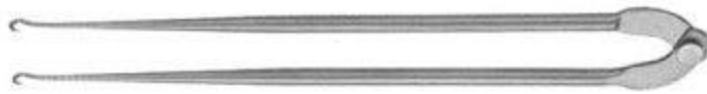
heaney-simon-retractor-with-fiber-optic-guide-light



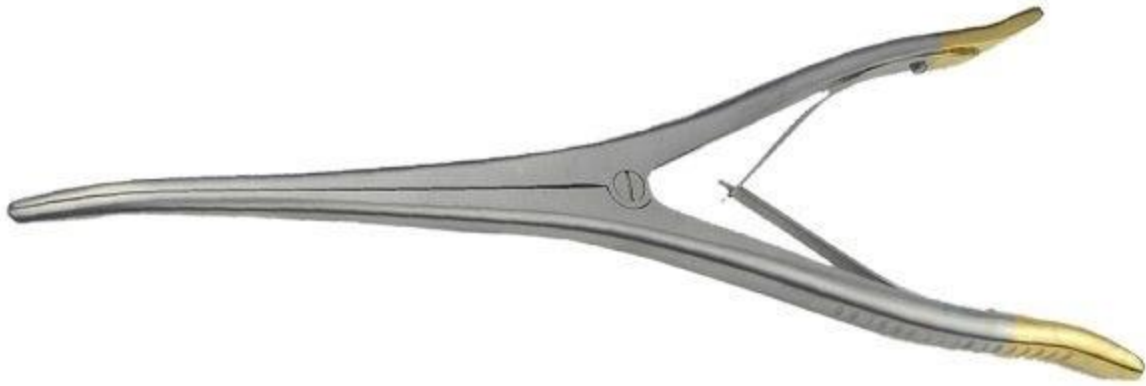
hook-retractor-165cm



humby-swivel-hook-115cm



iconoclast-breast-spreader-22cm-2



jackson-tracheal-retractor-17cm-double-ended



jackson-tracheal-tenaculum-14.5cm



jaeger-lid-plate-11cm



jaeger-lid-plate-11cm-insulated



joseph-skin-hook-16cm-double-prong-sharp



joseph-skin-hook-16cm-single-prong-sharp



kawamoto-double-ended-retractor-insulated-16cm



killian-claus-nasal-gouge-17cm-6mm-wide



killian-nasal-gouge-17.5cm-6mm-wide



kilner-double-nasal-hook-10cm-2



kilner-nasal-retractor-swivel-ring-9cm



langenbeck-bone-elevator-20cm-blunt



kleinert-kutz-skin-hook-13cm-sharp



kocher-retractor-22cm-2



kocher-retractor-23cm



lahey-clinic-dura-retractor-hook-13cm-2



langenbeck-bone-elevator-20cm-blunt



langenbeck-kocher-retractor-21cm



langenbeck-retractor-21cm-3



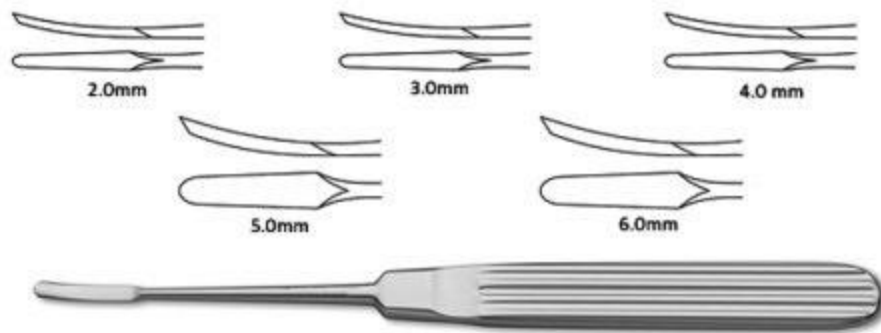
langenbeck-retractor-21cm-style-2-2



langenbeck-retractor-hollow-handle-21cm



lempert-raspatory-17cm-delicate-sharp



maccollum-dingmann-breast-dissector-43cm



marx-breast-retractor-27cm-130x25mm-blade-wide-2



masing-septum-elevator-22cm



masing-septum-raspatory-22cm-4mm-wide-sharp



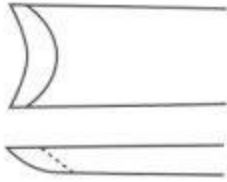
maxwell-flap-retractor-10cm



mcculloch-elevator-19cm



mcindoe-chisel-16cm



mcindoe-dressing-forcep-15cm-serrated-2



mckenty-raspatory-15cm-sharp-light-curved



meyerding-retractor



meyerding-retractor-with-ring-hold-18cm-3
FMI-9038



micro-adson-dressing-forcep-0.8mm-tip-serrated



micro-adson-tissue-forcep-1x2-teeth-0.8mm



micro-clip-applying-forceps-14.5cm-3



micro-forceps-curved-8mm-round-handle



micro-forceps-straight-8mm-round-handle



micro-vessel-dilator-curved-11cm



micro-vessel-dilator-straight-11cm-



millard-cottle-retractor-with-finger-ring-55cm
FMI-9037



millard-thumb-hook-double-prong-18mm-2
FMI-9037



millard-thumb-hook-single-prong
FMI-9036



moberg-chisel-18cm



nasal-tip-retractor-11cm-8mm-wide
FMI-9035



neivert-retractor-19cm-doundle-ended
FMI-9034



nelson-tissue-forcep-2



parker-retractor-13cm-set-of-2
FMI-9033



pennington-septum-elevator-20cm



potts-smith-dressing-and-tissue-forcep-1x2-teeth



regnell-double-ended-retractor-16cm
FMI-9032



retractor-17cm-4
FMI-9031



retractor-17cm-4



retractor-18cm-3x15mm-2
FMI-9030



ribbon-retractor-33cm-malleable-
FMI-9029



rib-raspatory-30cm



richardson-retractor-25cm
FMI-9028



richardson-retractor-double-ended-set-of-2
FMI-2027



rollet-retractor-4-prongs-14cm
FMI-9026



roux-baby-retractor-13cm
FMI-9025



rubin-edged-bone-chisel-18cm-t-shaped



rubin-nasal-osteotome-18cm



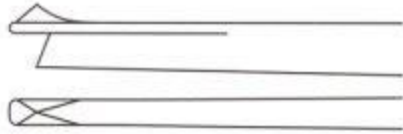
rubin-septal-morselizer-forcep-21cm-2



saldanha-abdominal-
retractor-23cm-style-2-2
FMI-9024



schrom-osteotome-19.5cm-with-guide-thorn



sculpo-breast-retractor-180x25mm-blade
FMI-2023



select-tissue-forcep-extremely-fine-1x2-teeth



semken-dressing-forcep-delicate



semken-tissue-forcep-1x2-teeth



senn-green-retractor-14cm-2
FMI-2022



senn-miller-retractor-16cm-
FMI-9021



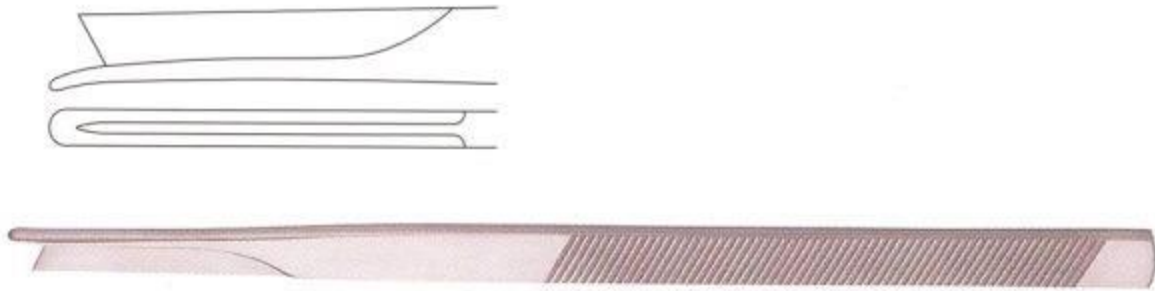
senn-miller-retractor-16cm-insulated
FMI-9020



sheen-retractor-15cm-65mm-wide-tip
FMI-9019



silver-osteotome-18cm



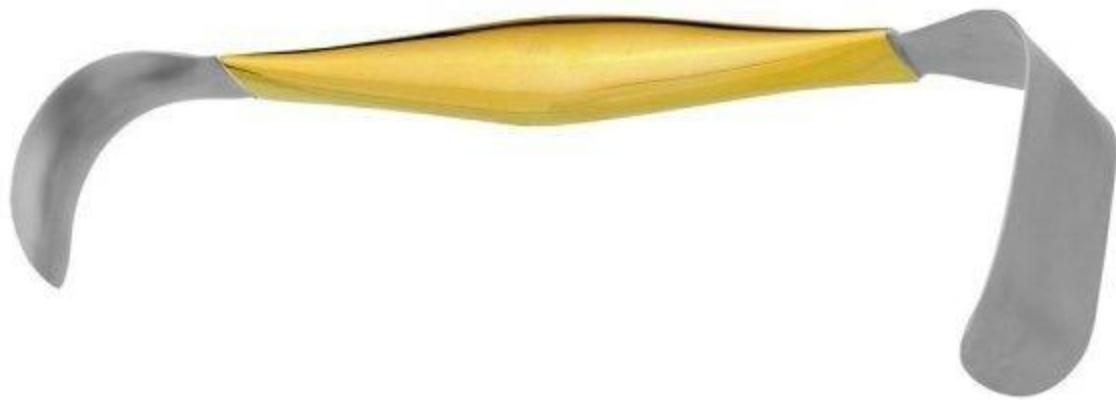
straight-skin-hook-13cm-2
FMI-9018



strandell-stille-retractor-2
FMI-9017



tebbett-breast-retractor-double-ended-24cm
FMI-9016



tebbett-breast-retractor-double-ended-24cm-insulated-3
FMI-9015



tebbett-breast-retractor-double-ended-24cm-insulated-style-2
FMI-9014



tebbett-breast-retractor-double-ended-24cm-style-2
FMI-9013



tebbetts-aufricht-retractor-12cm
FMI-9011



tebbetts-fiber-optic-retractor-insulated-with-teeth-18.5



tebbetts-fiber-optic-retractor-with-teeth-18.5-5



tebbetts-retractor-with-teeth-185
FMI-9012



tebbetts-septal-elevator-21cm



tebbetts-spatula-semi-malleable-315cm
FMI-9010



tissue-forcep-slim-1x2-teeth-2



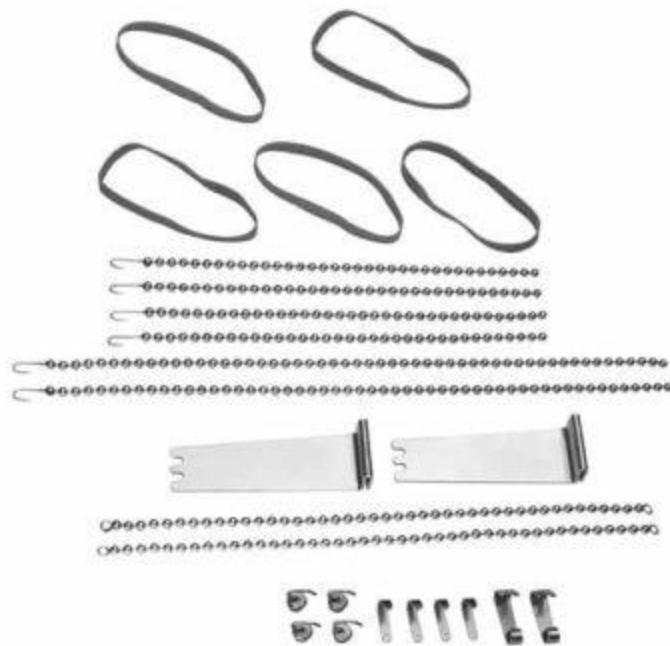
tissue-forcep-standard-2



troeltsch-wilde-angular-forcep-1x2-teeth



tupper-hand-retractor-set
FMI-9009



university-of-minnesota-tongue-depressor
FMI-9008



us-navy-army-retractor-215cm-set-of-2
FMI-9007



us-navy-army-retractor-insulated-215cm-set-of-2
FMI-9006



volkmann-retractor-22cm-standard-pattern-5
FMI-9005



volkmann-retractor-22cm-swedish-pattern-4
FMI-9004



walter-bayonet-grasping-forcep-16cm-without-pin



walter-bayonet-grasping-forcep-16cm-with-pin



walter-chiselosteotome-19cm-modified



walter-osteotome-19cm-6mm-curved



walter-osteotome-19cm-straight-



walter-rake-retractor-18cm
FMI_9003



waugh-dressing-forcep



waugh-tissue-forcep-1x2-teeth



wieder-breast-and-facial-retractor-14cm
FMI-9002



williger-bone-curette-13.5cm



williger-raspatory-16cm-sharp



yancoskie-abdominoplasty-retractor-19cm
FMI-9001







