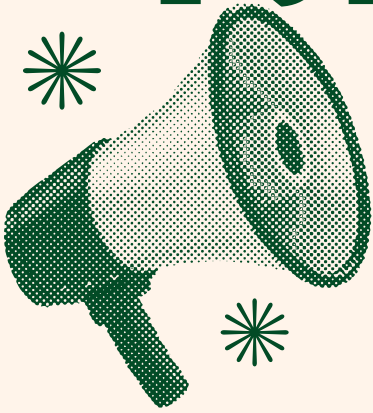


ICL OUT OF STL



Israeli Chemicals Limited (ICL) has sited a major Lithium Iron Phosphate (LFP) manufacturing plant at 401 Adelaide Ave. in the North Riverfront neighborhood of St. Louis City.

This industrial facility is less than a mile from the O'Fallon Rec Center, 1000 ft from residences, across the street from a KIPP middle school and nearby the St. Louis City Chain of Rocks water treatment plant.

St. Louis Development Corporation ignored community concerns, passing a net \$8.2 million tax abatement without public input, nor the approval of the Board of Aldermen. This facility will emit air pollution including particulate matter (PM), nitrogen oxides (NO_x), carbon monoxide (CO), sulfur dioxide (SO₂), volatile organic compounds (VOCs), small quantities of heavy metals, and hazardous air pollutants (HAPs), among others.

WE MUST TAKE A STAND AGAINST ENVIRONMENTAL RACISM, AGAINST FURTHER DEGRADATION OF ST. LOUIS AIR QUALITY IN THE MOST MARGINALIZED NEIGHBORHOODS, AND AGAINST TAX INCENTIVES FOR UNETHICAL CORPORATIONS.

SUPPRESSING DISSENT

- ICL is hiding **all** information about this facility from the public: **their building permit from DNR is entirely redacted.**
- ICL & the DOE hid opportunities for public comment on ICL's flawed environmental assessment, and refused to extend the comment deadline to increase public accessibility.
- When the Board of Aldermen (BOA) rejected a tax abatement, ICL went to a non-elected city board, the Planned Industrial Expansion Authority (PIEA), which refused to hear public comments and passed a large, controversial tax incentive.



ICL'S TRACK RECORD OF HARM

- ICL has contracts with the Department of Defense (DoD) to produce white phosphorus, a chemical weapon notoriously used by the Israeli Defense Forces (IDF) against the Palestinian population in Gaza in violation of international law.
- At its existing Carondelet facility, Missouri Department of Natural Resources (DNR) found ICL to be in violation of the Clean Air Act. DNR sent ICL 4 warning letters, and issued an official citation in July 2024.
- ICL paid \$33.7 million in a settlement after one of its facilities collapsed in 2017, polluting a riverbed in the Negev/Naqab desert with millions of gallons of highly toxic wastewater, killing dozens of animals, including ibex, foxes, and birds, & impairing the local ecosystem for years after.

HOW CAN COMMUNITY MEMBERS KNOW THAT THE OPERATIONS AT THIS PLANT WILL BE SAFE FOR ST. LOUISANS, LET ALONE ETHICAL?

ENVIRONMENTAL RACISM

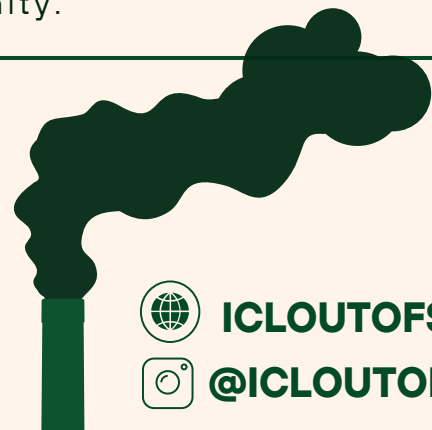
This facility was sited without community consent in an area already overburned

by environmental hazards. The site is in a census tract which qualifies as an at-risk community for environmental justice concerns. More than 21% of residents live below the poverty line and 74% identify as Black. This area is already in at least the 90th percentile nationally for Ozone burden, NOx burden, and PM 2.5 burden. Further air pollution from the neighborhood's bisecting interstate highway is compounded by contaminants blowing in from industrial operations across the Mississippi.

ICL has claimed that localized harm will be "offset" by adoption of EV's broadly. **We do not accept this sacrifice zone mentality.** ICL must reckon with these local impacts and listen to the impacted community.



**SCAN TO SIGN
OUR PETITION &
EMAIL YOUR ALDER**



ICLOUTOFSTL.COM



@ICLOUTOFSTLOUIS