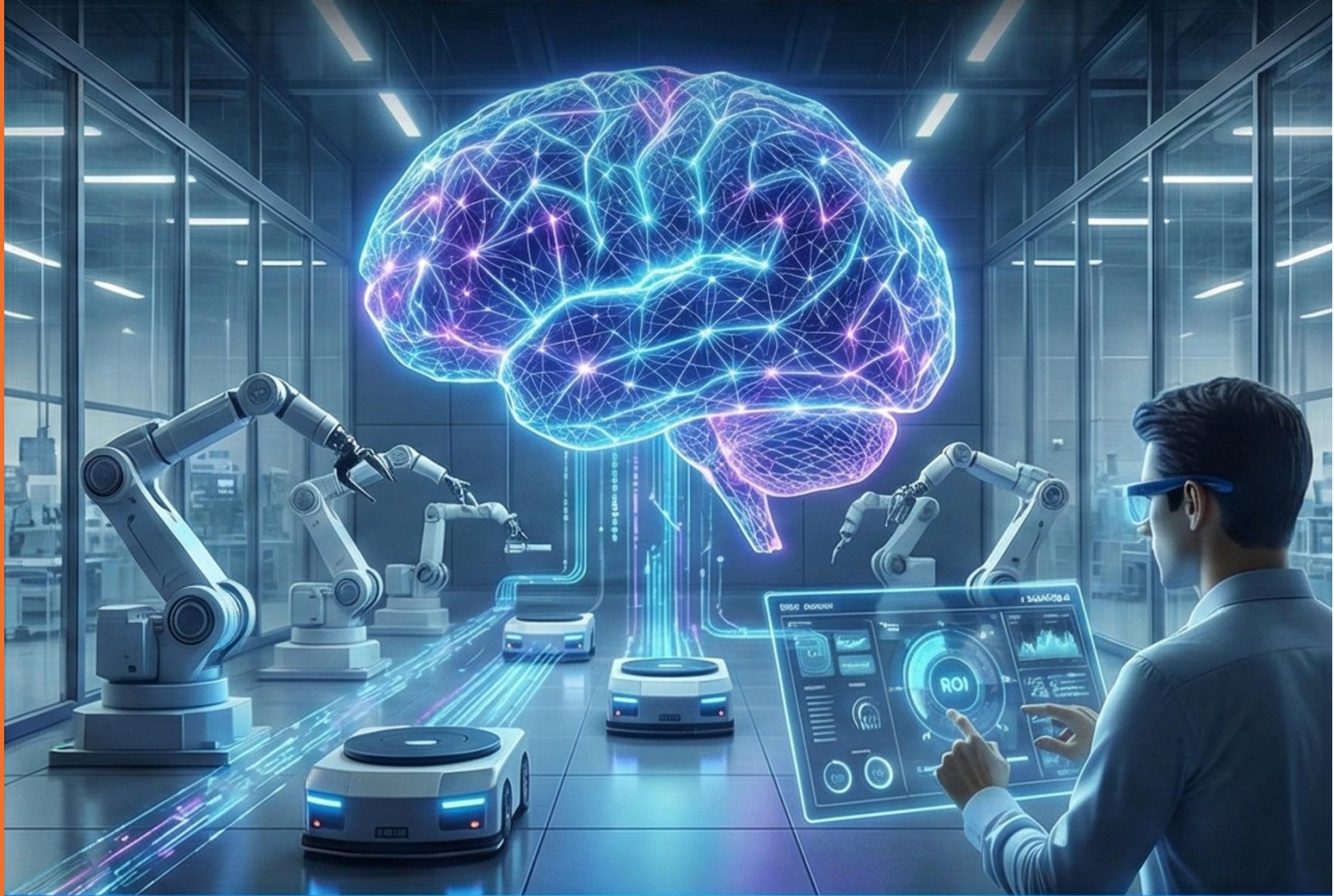


WHITE PAPER

# THE NEURAL FACTORY

OPERATIONALIZING DISTRIBUTED  
INTELLIGENCE FOR INDUSTRY 5.0

INVESTOR & PARTNER EDITION



CogniEdge.ai

February 2026





© 2026 CogniEdge.ai. All rights reserved.

No part of this white paper may be reproduced, stored in a retrieval system, transmitted in any form or by any means - electronic, mechanical, photocopying, recording, or otherwise, without the prior written permission of CogniEdge.ai, except as permitted under United States copyright law or for brief quotations in reviews.

This white paper is provided for informational purposes only and does not constitute investment, legal, or technical advice. The information contained herein is believed to be accurate as of February 2026 but is subject to change without notice. CogniEdge.ai makes no warranties, express or implied, regarding the completeness or accuracy of this document.

### **Confidential – For Internal / Partner / Investor Use Only**

This document contains proprietary and confidential information of CogniEdge.ai. It is intended solely for the use of the intended recipient(s) and may not be distributed, copied, or disclosed to third parties without prior written consent from CogniEdge.ai.

### **CogniEdge Limited Company**

[www.cogniedge.ai](http://www.cogniedge.ai) | [Contact@CogniEdge.ai](mailto:Contact@CogniEdge.ai)

February 2026

### **Authors**

Madhu Gaganam, Founder & CEO

Steven Bloomstein, Partner - Business Development

Lax Mandal, Partner - Ecosystem Partnerships

This document contains forward-looking statements based on current expectations. Actual results may differ materially due to various risks and uncertainties.



## EXECUTIVE SUMMARY: THE NERVOUS SYSTEM OF INDUSTRY 5.0

### The Pivot Point: From Connectivity to Cognition

We stand at the threshold of Industry 5.0. Industry 4.0 delivered connected automation and oceans of data. Industry 5.0 demands **collaborative intelligence** - humans and machines working safely, side-by-side, in real time.

The transition has stalled. The “Reshoring Stagnation” of 2024–2025 revealed a critical Rigidity Gap. Legacy automation cannot handle the chaos of brownfield factories or the chronic labor shortage projected to leave 2.1 million manufacturing jobs unfilled by 2030.

### The Cloud Latency Wall

For a decade, 5G and Cloud AI were promised as the all-encompassing solution. Instead, they delivered incremental gains, massive capital expenditure, and mounting complexity. They have hit the physics wall. Even with private 5G transmission latency under 5 milliseconds, real world round trip delays routinely exceed 500 milliseconds once data travels to distant servers and returns. That is far too slow for a robot arm moving at 2 meters per second or a human stepping into a shared workspace.

### The CogniEdge Solution

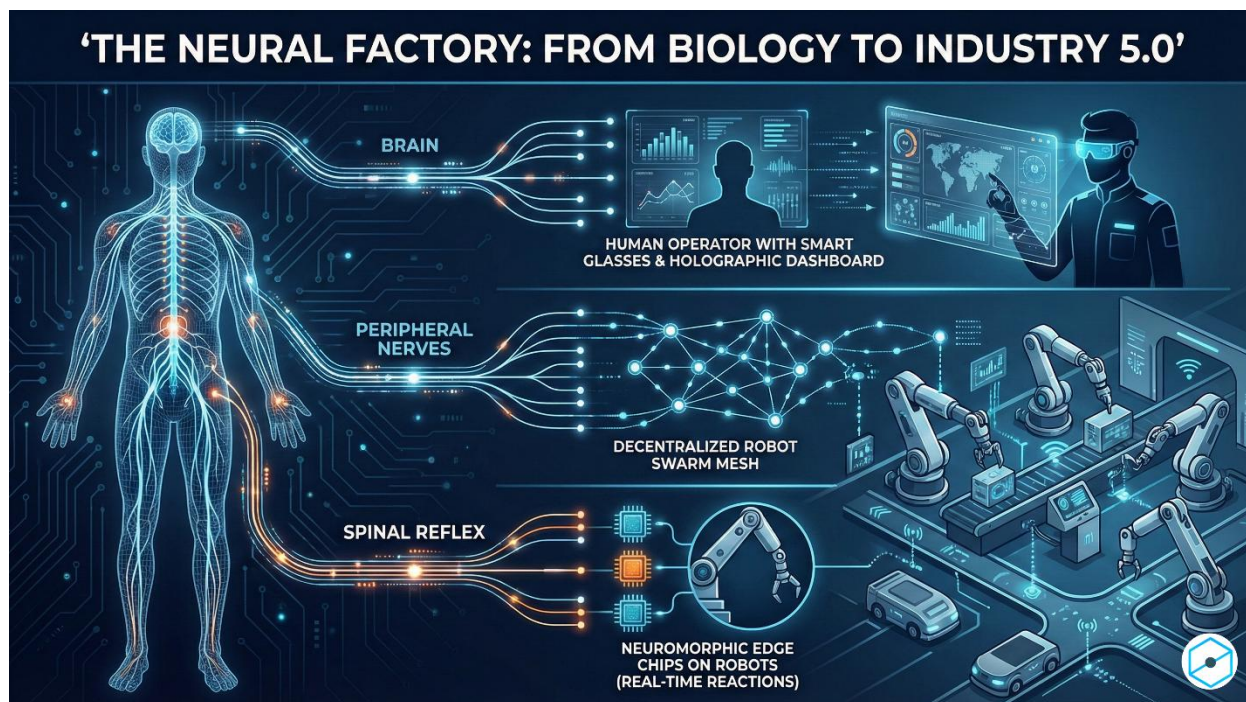
CogniEdge.ai introduces the **Cohesive Edge-Driven Robotics (CEDR) Framework**, the first decentralized “nervous system” for industrial automation. By combining second-generation neuromorphic computing, Physical AI, and bio-inspired swarm planning, CEDR moves intelligence from the cloud to the edge node.

### Core Value Proposition

- **Zero-Latency Safety:** Event-based spiking neural networks deliver <30 ms reflex latency-eliminating safety cages and enabling true human–robot collaboration.
- **Hardware Agnostic:** Retrofits existing legacy robots and machines, turning “dumb” assets into smart nodes and cutting CapEx by more than 40%.
- **Regulatory Armor:** Privacy-by-design architecture processes all biometric data locally, ensuring full compliance with the EU AI Act (including high-risk risk-management requirements under Article 9), GDPR Article 9 on biometric data, and the Cyber Resilience Act.

### The Human Premise

CEDR rejects the “Lights Out” fallacy. The human worker still remains the most versatile node in the system. By augmenting human intuition with robotic endurance, the **Neural Factory** targets 20 to 30% lower operational costs and 300% greater fleet agility inside the \$124.77 billion AI-in-robotics market by 2030. This is not just automation; it is **Neuro-Adaptive Resilience**, humans and machines as true co-workers.



*Intelligence at the Edge - Where the Body Meets the Factory Floor*

## 1. THE CHALLENGE

### THE “SMART” FACTORY’S MISSING LINK

The original Smart Factory vision pushed all sensor data to the cloud for heavy AI processing, then sent commands back. In Physical AI environments, this architecture fails to scale.

The Reshoring Stagnation of 2024–2025 exposed cloud fragility. Cloud-dependent systems could simply not process fast enough.

### Three Critical Failure Modes

#### 1) The Latency Wall (The 5G Mirage)

Private 5G cuts transmission latency, but compute latency remains. High fidelity LiDAR or video can still incur a 50 to 100 millisecond processing delay at the server, which can be deadly for safety critical motion. Furthermore, metal dense factories naturally create Faraday cage dead zones where signals drop entirely. Therefore, any safety system that depends on a

continuous wireless connection is a system that will eventually fail. For true reliability, the brain must live in the body.

#### 2) The Brownfield Reality

Ninety percent of global factories are decades old brownfield sites characterized by narrow aisles, poor wireless connectivity, and high digital noise. Traditional robotics require greenfield sterility, meaning perfectly mapped, freshly built, and heavily structured environments. Attempting to force legacy robots into a brownfield site creates a devastating double financial hit. First, there is a massive upfront CapEx requirement for pouring new concrete, installing safety cages, and hardwiring networks. Second, this is compounded by millions of dollars in OpEx losses due to months of zero output production downtime.

Simultaneously, the push following the pandemic to reshore manufacturing back to the US and



Europe has collided with high construction costs. Mid-market manufacturers cannot afford to build brand new smart factories from scratch. Their only viable path to reshoring is to modernize the aging warehouses they already have. Therefore, the ability to deploy intelligent and adaptive automation into chaotic existing infrastructure without shutting down current production has become the defining industrial challenge of the decade.

### 3) The Cyber-Kinetic Threat

Centralized fleet servers are single points of failure. A breach can hold the factory hostage or cause erratic robot motion. The EU Cyber Resilience Act now demands proven resilience to remote tampering; a requirement centralized architectures struggle to meet.

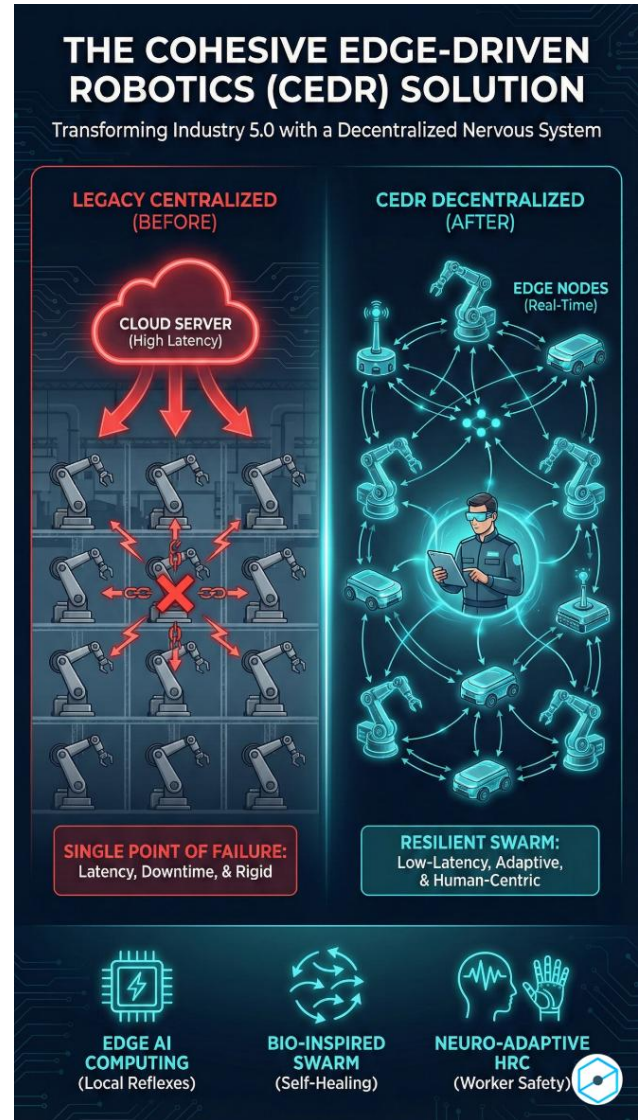
### The Human Gap (Neuro-Empathy Crisis)

Current systems treat humans as obstacles to be caged rather than partners to be understood. In an era of acute labor shortages, this rigid dynamic drives worker fatigue, turnover, and injury. The solution is not more cloud computing. The solution is Edge Intelligence, functioning exactly as biological evolution did when it placed reflexes in the spinal cord to guarantee survival.

## 2. THE SOLUTION

### CEDR AS THE FACTORY'S "NERVOUS SYSTEM"

CogniEdge.ai does not build better robot bodies; we build a better nervous system. The CEDR framework transforms standard hardware into intelligent, autonomous nodes across five (5) integrated dimensions.



Before vs After: From Traffic Light to Roundabout

### Edge Computing: The Reflex Arc (Gen-2 Neuromorphic)

Using processors such as BrainChip Akida 2.0 or Spiking Neural Network based algorithms, CEDR performs event based processing that tracks only pixel changes. Power consumption can drop by up to 80 percent, and latency falls below 30 milliseconds. A CEDR robot halts instantly if a worker slips, not because the cloud commanded it, but because its local spinal cord reacted.



### **SwarmSync Planning: Roundabout, Not Traffic Light**

Centralized control gridlocks when the server fails. CEDR's bio-inspired swarm (Ant Colony Optimization) lets robots share local digital "pheromones." If one forklift fails, the fleet reroutes fluidly. Leaderless and decentralized-no central brain to hack or crash.

### **Neuro-Ergonomics: The Check Engine Light for Humans**

Electroencephalogram (EEG) enabled smart vests and glasses detect cognitive fatigue via Alpha/Beta wave ratios. All biometric analysis stays on-device (GDPR Article 9 compliant). Only an anonymized "Fatigue Flag" reaches the robot controller, which then slows the factory line or reroutes tasks automatically.

### **The Edge SLM: Generative Physical AI**

Small Language Models (SLMs) embedded at the edge let any operator speak naturally: "Why are you holding position?" The robot replies locally: "Oil spill detected in Zone B, rerouting traffic." Troubleshooting no longer requires coding skills.

### **The Digital Antibody: Cyber Resilience**

Decentralized nodes monitor peer-to-peer trust scores. Anomalous behavior triggers immediate isolation, the swarm physically boxes in or cuts off the infected node. A localized hack never becomes a factory-wide shut down.

## **3. THEORETICAL CONVERGENCE**

### **GERSHENFELD & THE FUTURE OF MAKING**

CogniEdge.ai operationalizes Prof. Neil Gershenfeld's (MIT Center for Bits and Atoms) vision of distributed fabrication, turning

manufacturing from a hardware problem into a computer science problem.

Every robot becomes a "Fab Node." Production lines shift from fixed monuments to modular, reconfigurable swarms that enable micro-factories in urban settings.

By embedding intelligence directly at the actuator to achieve computing in the material, CEDR eliminates the abstraction layer between code and reality. High frequency local feedback loops of under 10 milliseconds turn analog manufacturing into a digital process that corrects errors in real time.

Building on the MIT 2025 Speech to Reality breakthrough, a manager can now say, "Reconfigure Cell 4 for hatchback door assembly." The swarm simulates, replans, and physically realigns in hours instead of weeks.

Finally, CEDR enables disassembly as a service. Because it retains the genetic code of every product it built, the swarm can reverse the production process at high speed. This directly supports the European Union 2026 Ecodesign mandates for circular economies and digital product passports, turning sustainability compliance from a cost center into an automated process.

## **4. THE HUMAN PREMISE**

### **WHY INDUSTRY 5.0 IS NOT "LIGHTS OUT"**

Tesla's 2018 "Production Hell" and the Reshoring Stagnation of 2024-2025 proved the same lesson: excessive automation fails in high-mix, low-volume brownfield environments. Humans are not the problem; they are the solution.



## Moravec's Paradox & The Dexterity Gap

Robots excel at the first 90 percent of repetitive tasks but struggle with the last 10 percent of dexterous and context aware work that humans perform effortlessly. CEDR handles the heavy lifting and logistics so humans can focus on high value processes and tasks.

## Cognitive Flexibility & The "Smell Test"

A sensor may read "temperature normal," but a human smells burning rubber and stops the line. CEDR captures this "tribal knowledge" through gesture and voice teaching, then distributes it across the swarm.

## Neuro-Ergonomics in Action

The system detects rising fatigue and proactively slows conveyors or reassigns tasks, turning safety from reactive to predictive.

## The Teacher-in-the-Loop

Experienced workers become robot teachers. By simply showing and explaining a task, they pass decades of valuable knowledge to the robot network before they retire. Because the physical strain is removed, this extends their working years by 5 to 10 years and helps factories overcome the severe shortage of skilled labor.

## 5. THE BUSINESS CASE

### WHY NOW?

#### Market Opportunity

By 2030, the AI in robotics market will reach \$124.77 billion. Upgrading older existing factories, known as brownfield retrofitting, makes up more than 60 percent of this total addressable market. Because the CEDR platform works on any brand of existing machinery, it lowers the upfront financial barrier



**Hardware-agnostic • Edge-first • Human-augmented**

for a factory to upgrade by more than 40 percent. This unique advantage opens up the largest and most profitable segment of the industry that our competitors cannot easily reach.

### ROI Equation (\$50M to 100M facility)

- **20% to 30% OPEX reduction:** This savings is generated directly from optimizing energy consumption, reducing material scrap, and practically eliminating unplanned downtime.
- **300% agility increase:** Traditional production line changeovers take weeks of expensive reprogramming. Because the CEDR swarm instantly adapts its logistics



while humans handle the complex tactile work, product changeovers are measured in hours instead of weeks.

### Labor Cost of Inaction

Every unfilled shift costs ~\$22,000/day in lost productivity. CEDR's 'one-to-many' supervision lets one (1) operator oversee many (5 to 10) robots, multiplying existing workforce output.

### Insurance Premium Reduction

Predictive fatigue detection is already helping early adopters negotiate 10–15% lower workers' comp and general liability premiums.

### Defensibility

Our deep execution moat includes 15 pending patents, NVIDIA Inception membership, direct integrations with NVIDIA solutions, and ongoing discussions with advanced neuromorphic and edge computing companies. This traction is further strengthened by a Co-Chair role at the Digital Twin Consortium Manufacturing Committee and over 30 published articles and white papers across Forbes, Medium, and LinkedIn that establish our thought leadership in Physical AI and Industry 5.0. All these achievements are securely anchored by our decentralized CEDR architecture.

## 6. COMPETITIVE LANDSCAPE: THE EDGE ADVANTAGE

Feature	Legacy Fleet Management Systems (FMS)	Cloud AI / 5G	CogniEdge.AI - Cohesive Edge Driven Robotics (CEDR)
<b>Latency</b>	Low (simple logic)	High (500 ms+ round trip)	Ultra-low (<30 ms reflex)
<b>Connectivity</b>	Local server dependent	Requires 100% uptime	Mesh (works fully offline)
<b>Fleet Agility</b>	Rigid fixed routes	High but brittle	Liquid swarm logic
<b>Human Awareness</b>	None (safety cages)	Cameras (reactive)	EEG/bio-sensing (predictive)
<b>EU Compliance</b>	N/A (non-AI)	High risk (data transfer)	Zero-trust local processing
<b>Vendor Lock-in</b>	High (brand-specific)	Moderate	None (hardware agnostic)
<b>Cost Model</b>	High upfront CapEx	High recurring (data/5G)	Robotics-as-a-Service (performance-based)
<b>Scalability</b>	Linear (costly per unit)	Bandwidth-heavy	Exponential (swarm)

### The 5G Tax

Streaming terabytes of video to the cloud costs a fortune. CEDR processes locally and sends only kilobytes of metadata, cutting bandwidth expense by ~99%.

### Regulatory Moat

CEDR's local-only biometric processing bypasses high-risk audits and creates a

compliance firewall no centralized solution can match.

### Brownfield Interoperability

CEDR acts as the universal translator across 30-year-old conveyors and 2026 autonomous vehicles, ending vendor lock-in.

## 7. THE PARTNER ECOSYSTEM

### WHY INTEGRATORS SHOULD CHOOSE CEDR

CEDR turns System Integrators from simple cable pullers into Neural Architects. It shifts revenue from one off projects to high margin and recurring Robotics as a Service (RaaS).

- **Faster Commissioning:** Achieve 60 percent faster commissioning on mixed vendor brownfield sites.
- **Accessible Engineering:** Junior engineers can commission complex cells in days using natural language Digital Twin sandboxes.
- **Legal Protection:** Built in cyber resilience completely protects integrators under the Cyber Resilience Act.
- **Higher Valuations:** Lifetime Neuro Optimization service contracts create annual recurring revenue that private equity buyers value at 10 times standard project revenue.

## 8. CONCLUSION

### THE COGNITIVE COMMAND CENTER

The future of manufacturing is a true partnership where humans supply the intent and machines handle the complexity.

CEDR delivers the only platform that unifies fleet health, material flow, and workforce cognitive state into one actionable view. A plant manager simply asks the system to show all faults in Cell 4 and correlate them with worker fatigue levels. The system delivers a root cause analysis in seconds.

Resilience is the new efficiency. A CEDR factory treats broken robots, missing parts, and tired workers not as disasters, but as variables that the swarm easily solves.

CogniEdge.ai is not just participating in Industry 5.0; we are defining the architecture.

Contact us to schedule a concept demo.

[Contact@CogniEdge.ai](mailto:Contact@CogniEdge.ai)