

CATALOG **TINY HOUSE**

MODEL: GIULIETTA



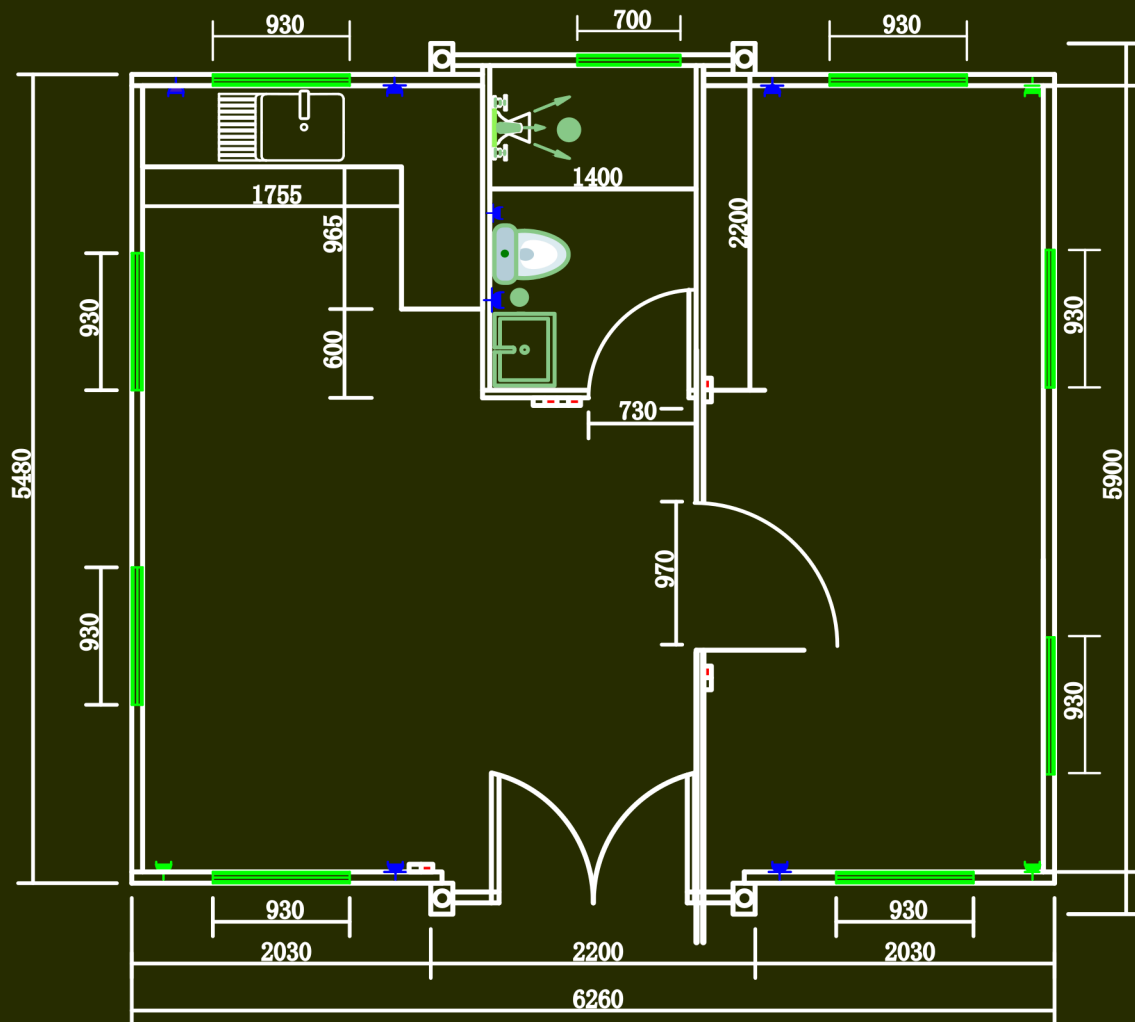
This Tiny House combines practicality and comfort in a functional design. It features a living room integrated with the kitchen in an open-concept layout, equipped with a cabinet with sink and space for appliances. It can have up to 3 bedrooms, with one of them being an en-suite in the T3 models. The bathroom comes complete with shower, enclosure, toilet, sink, and mirrored cabinet. It is built to accommodate the installation of heating systems, allowing the use of heated showers and faucets, ensuring hot water and thermal comfort safely. Additionally, it was designed to facilitate transport, allowing installation in various locations or even being used as a mobile home—ideal for adventure lovers.



THE TRANSPORT COST AND TIME MAY VARY DEPENDING ON THE CHOSEN SIZE AND MODEL, SINCE EACH VARIATION REQUIRES SPECIFIC LOGISTICS TO ENSURE A SAFE AND EFFICIENT DELIVERY.

MODEL T1

FLOOR PLAN:



GENERAL FEATURES

- Standard residential electrical system Adaptable for solar energy;
- One large bedroom.

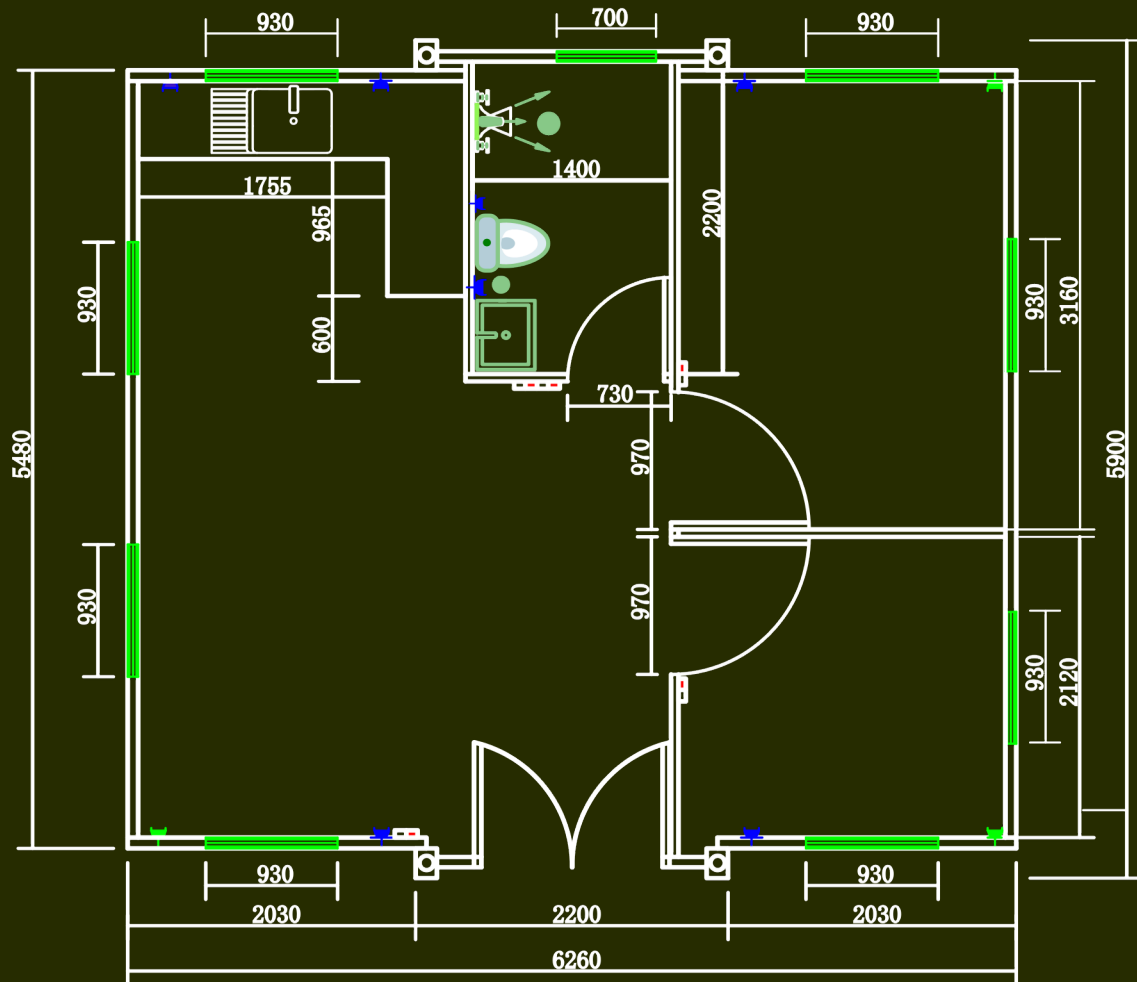
Total Area: 38m²

External dimensions: W6320 x L5900 x H2480

STARTING FROM: €32.000

MODEL T2

FLOOR PLAN:



GENERAL FEATURES

- Standard residential electrical system Adaptable for solar energy;
- Two bedrooms

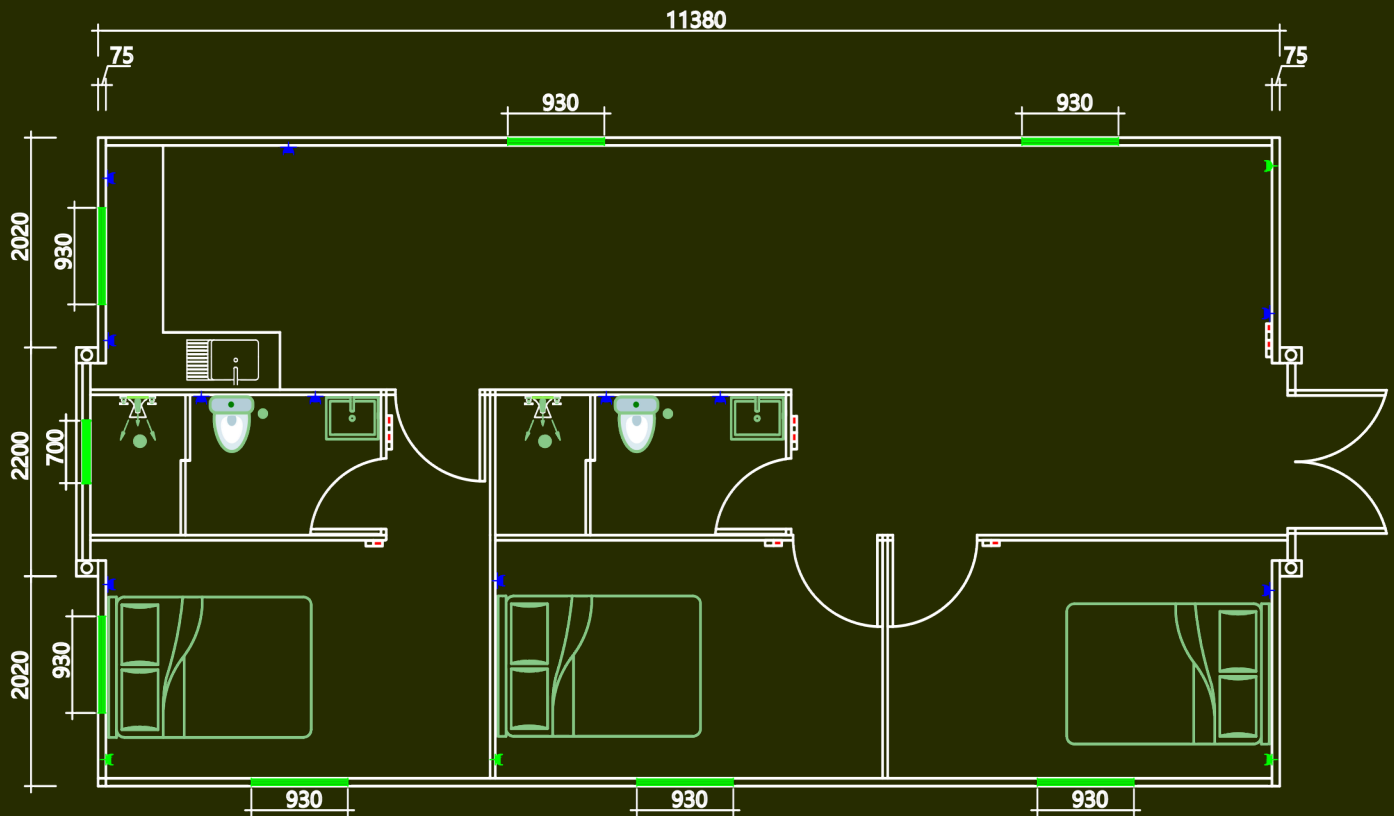
Total Area: 38m²

External dimensions: W6320 x L5900 x H2480

STARTING FROM: €32.000

MODEL T3

FLOOR PLAN:



GENERAL FEATURES

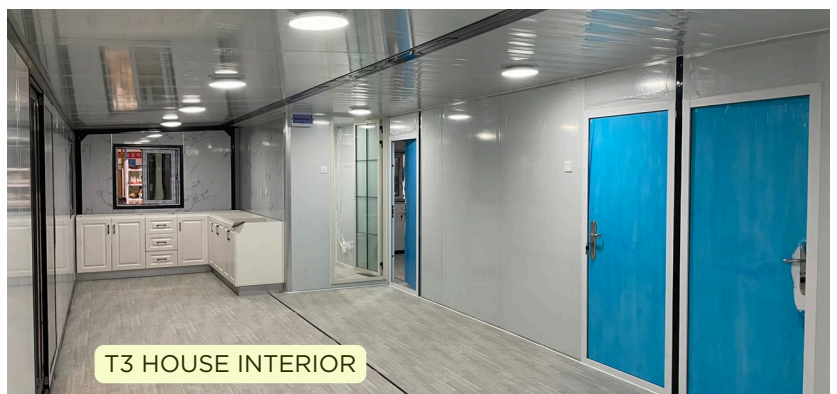
- Standard residential electrical system Adaptable for solar energy;
- Three bedrooms, one of which is an en-suite;

Total Area: 73m²

External dimensions: W6240 x L11800 x H2480

STARTING FROM: €48.000

CUSTOMIZATION



CUSTOMIZATION

EXTERIOR WALL



BROWN WOOD WALL PANEL



DARK GRAY WALL PANEL



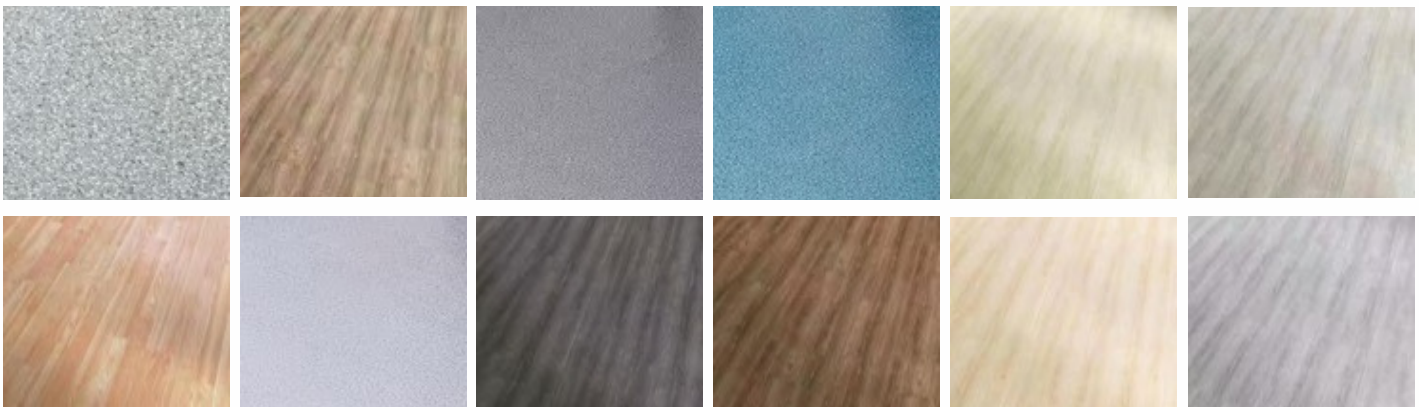
WHITE WALL PANEL



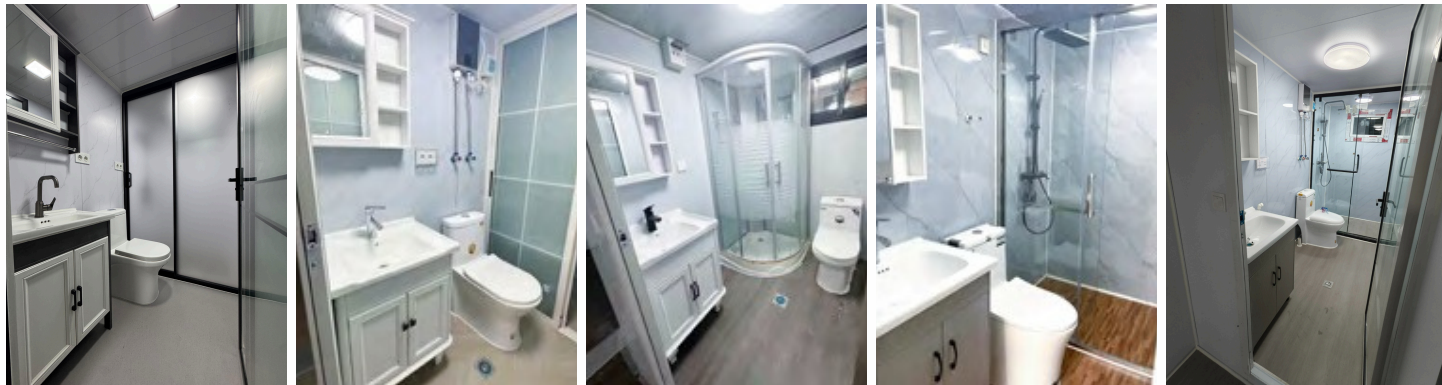
INTERIOR WALL



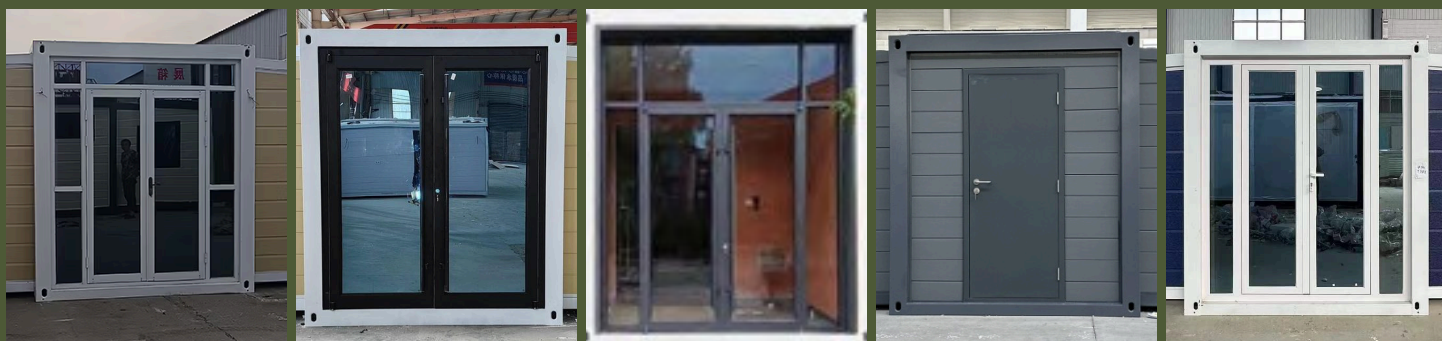
FLOOR



BATHROOM



DOORS



WINDOW



MODEL: BELLA



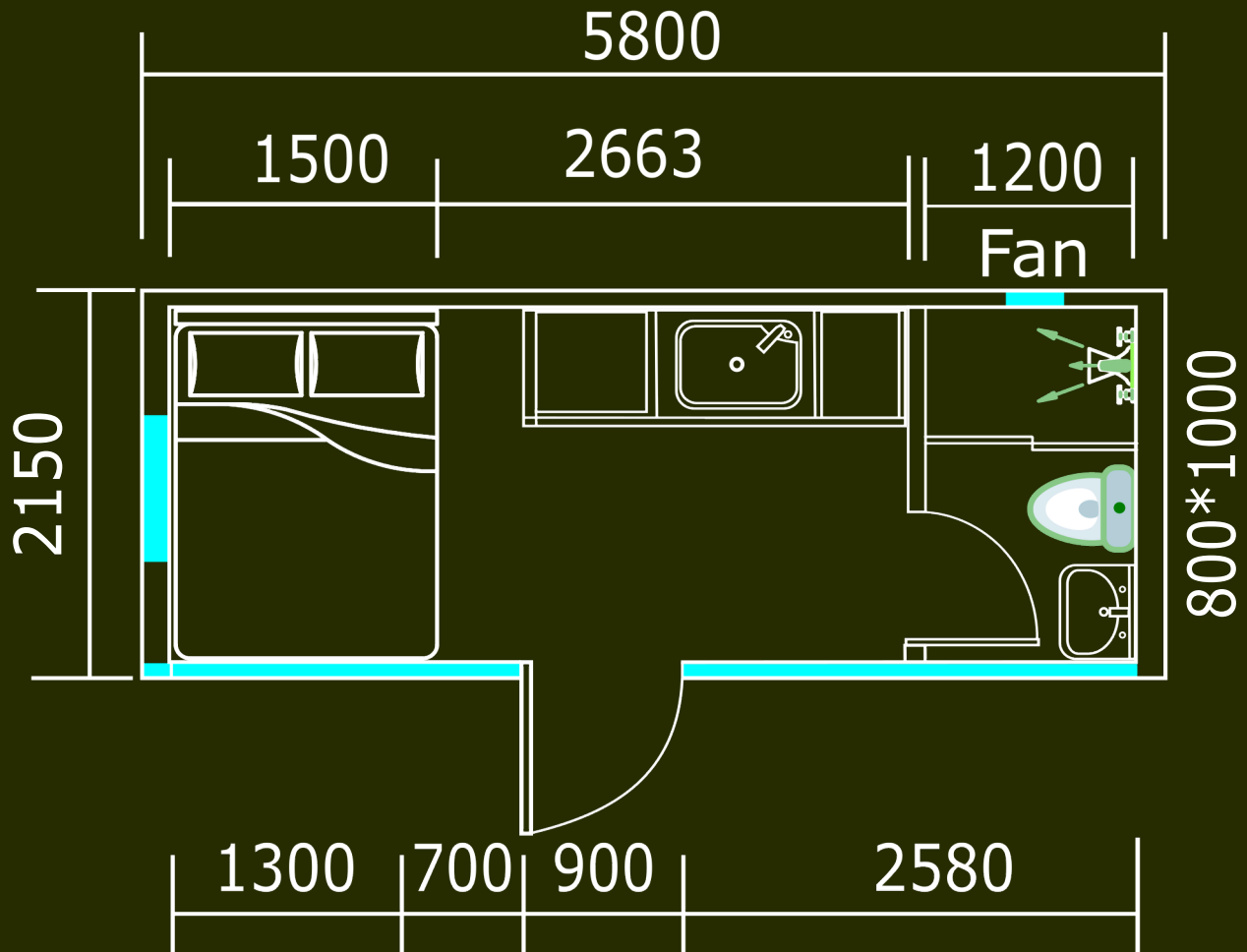
This Tiny House features a minimalist, compact, and modern design, making it perfect for a variety of uses beyond residential—such as hotels, campsites, Airbnb, studios, showrooms, shops, commercial spaces, and many others. This model has excellent thermal and acoustic insulation and features large mirrored windows, offering integration with the outdoors while providing privacy.



THE TRANSPORT COST AND TIME MAY VARY DEPENDING ON THE CHOSEN SIZE AND MODEL, SINCE EACH VARIATION REQUIRES SPECIFIC LOGISTICS TO ENSURE A SAFE AND EFFICIENT DELIVERY.

MODEL T0

FLOOR PLAN:



GENERAL FEATURES

- Standard residential electrical system Adaptable for solar energy;
- Open-concept house (studio)

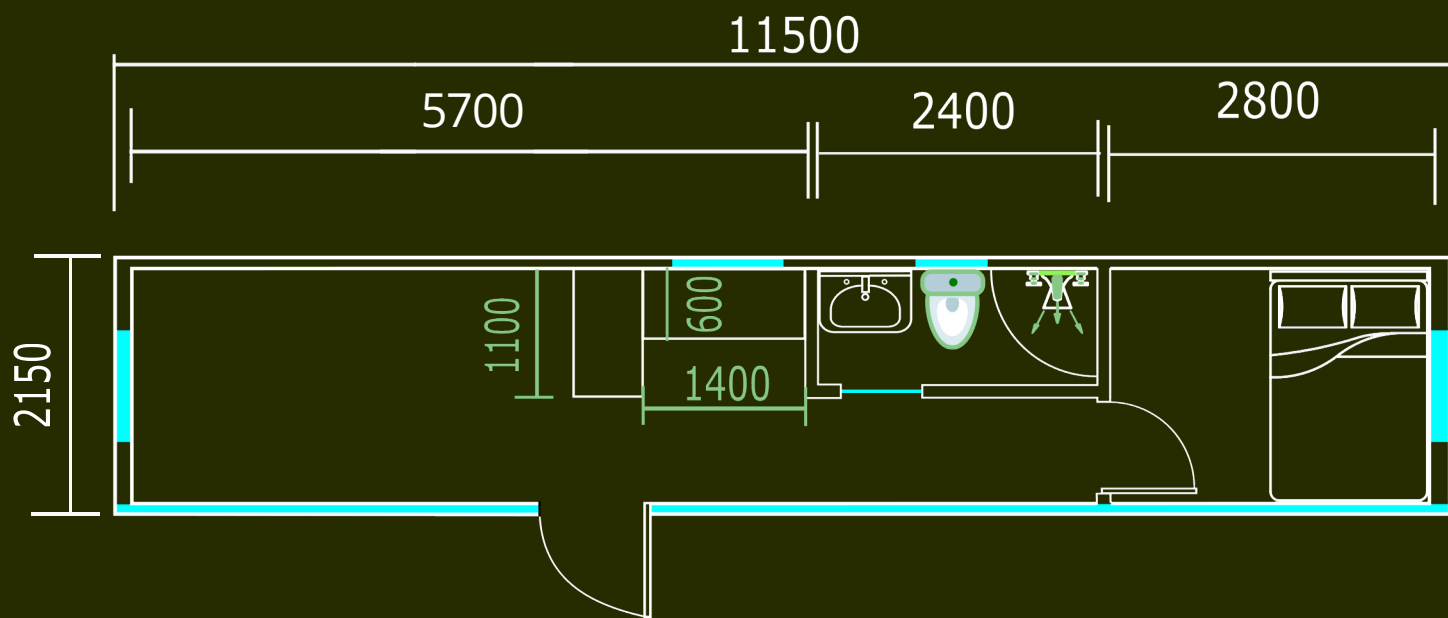
Total Area: 12.5m²

External dimensions: W2150 x L5800 x H2400mm

STARTING FROM: €32.000

MODEL T1

FLOOR PLAN:



GENERAL FEATURES

- Standard residential electrical system Adaptable for solar energy;
- One bedroom, one bathroom and a large kitchen area integrated with the living room

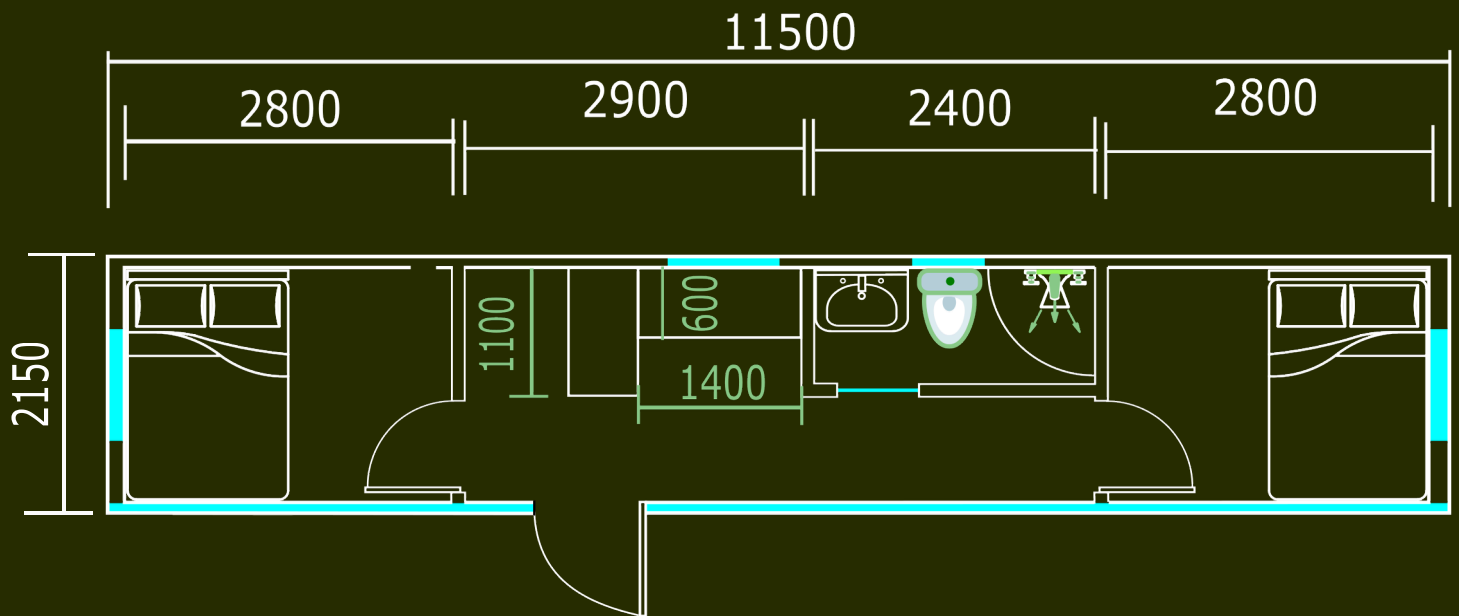
Total Area: 24.7m²

External dimensions: W2150 x L11500 x H2400mm

A PARTIR DE: €48.000

MODEL T2

FLOOR PLAN:



GENERAL FEATURES

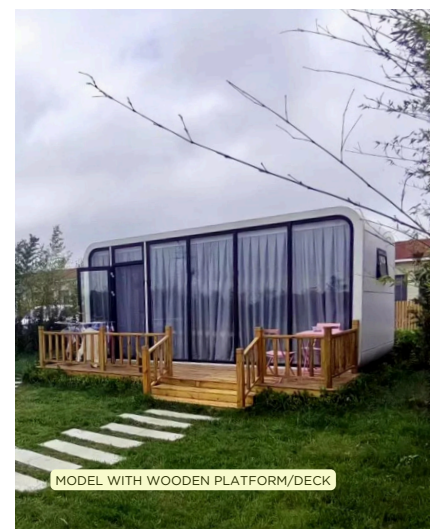
- Standard residential electrical system Adaptable for solar energy;
- Two bedrooms, one bathroom and a large kitchen area integrated with the living room

Total Area: 24.7m²

External dimensions: W2150 x L11500 xH2400mm

STARTING FROM: €48.000

CUSTOMIZATION



CUSTOMIZATION

EXTERIOR WALL

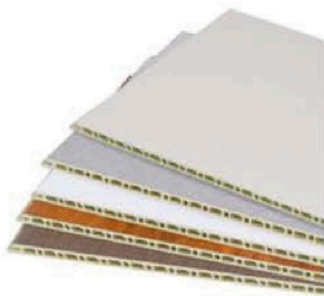


INTERIOR WALL

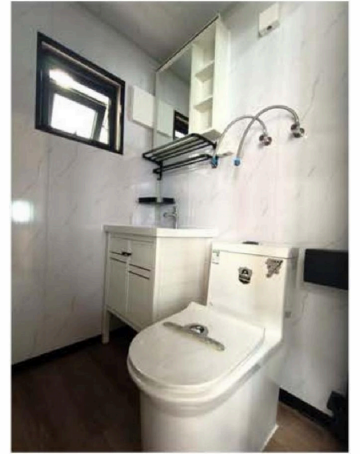
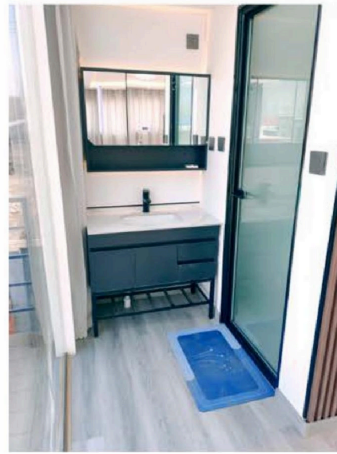
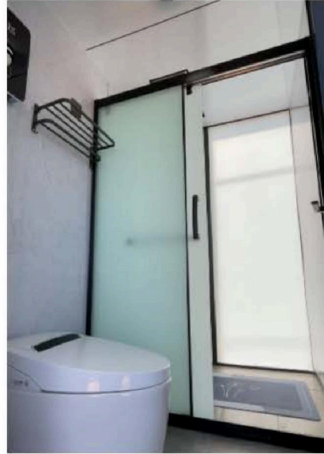
BAMBOO FIBER PANEL

OR

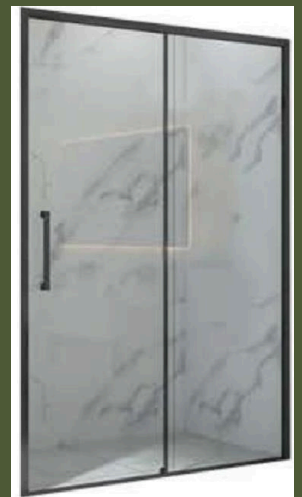
WOOD VENEER



BATHROOM




WINDOWS AND DOORS






We are a family-owned company specialized in the sale and installation of tiny houses.

CONTACT US

 EN 18 KM 96,2, 6005-118 Alcains

 +351 927 756 026

 /Piccolina-Tiny-Houses

 @piccolinatinyhouses

 www.Piccolinatinyhouses.com

