



PORTFOLIO

Aleksia Qesari, 2025

Contents:

01 Educational Building
Year: 2024
8 weeks / Studio 403
Criteria: PC.2, PC.3, PC.4, ,PC.8
Educational Building + Site Design

02 Music Library
Year: 2023
7 weeks / Studio 401
Criteria: PC.2, PC.4
Civic Building

03 Harbor Plaza
Year: 2023
5 weeks / Studio 400
Criteria: PC.2
Precedent Study + Design

04 Goatbarn Lane House
Year: 2024
15 weeks / ARCH472
Criteria: SC.4
Precedent Study

05 Performing Arts Center
Year: 2024
5 weeks / Studio 402
Criteria: PC.2, PC.3
Civic Building + Plaza

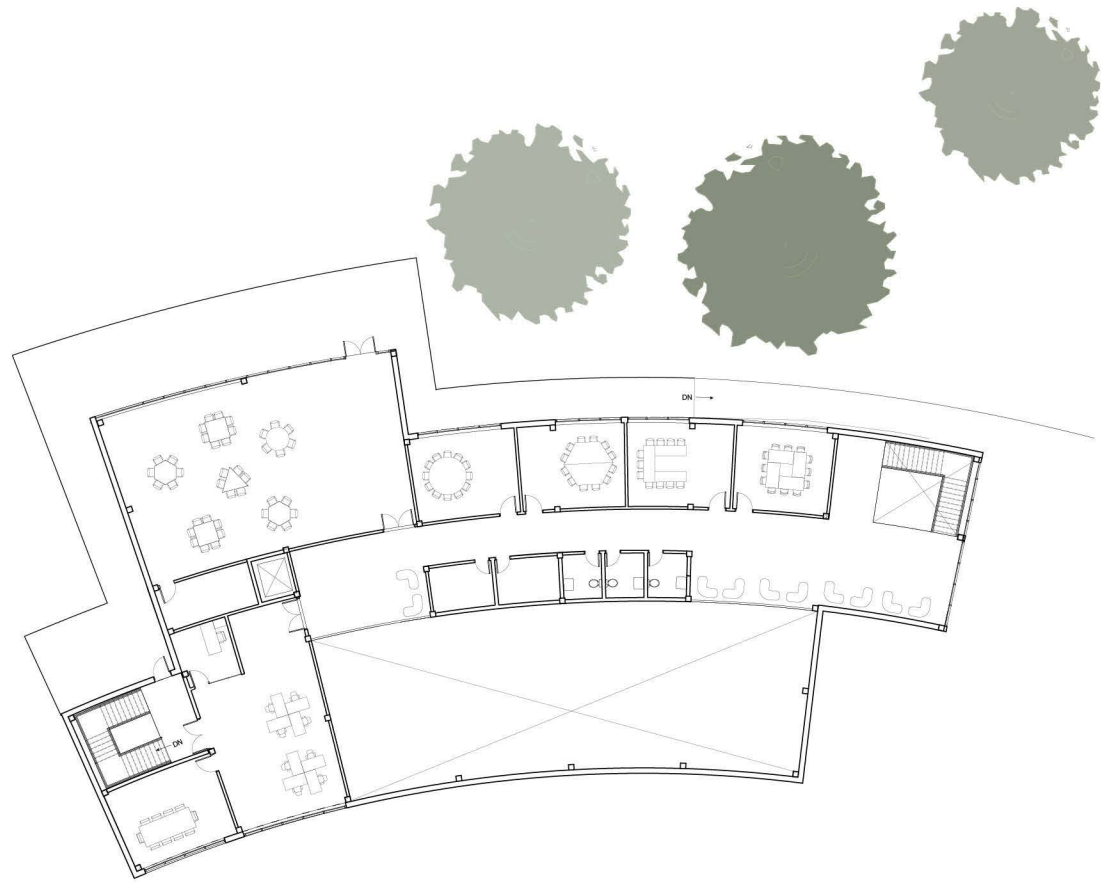
06 Artistic Works
Year: 2021 - Present
Duration: AP Drawing Portfolio
Score: 5

01 Educational Building

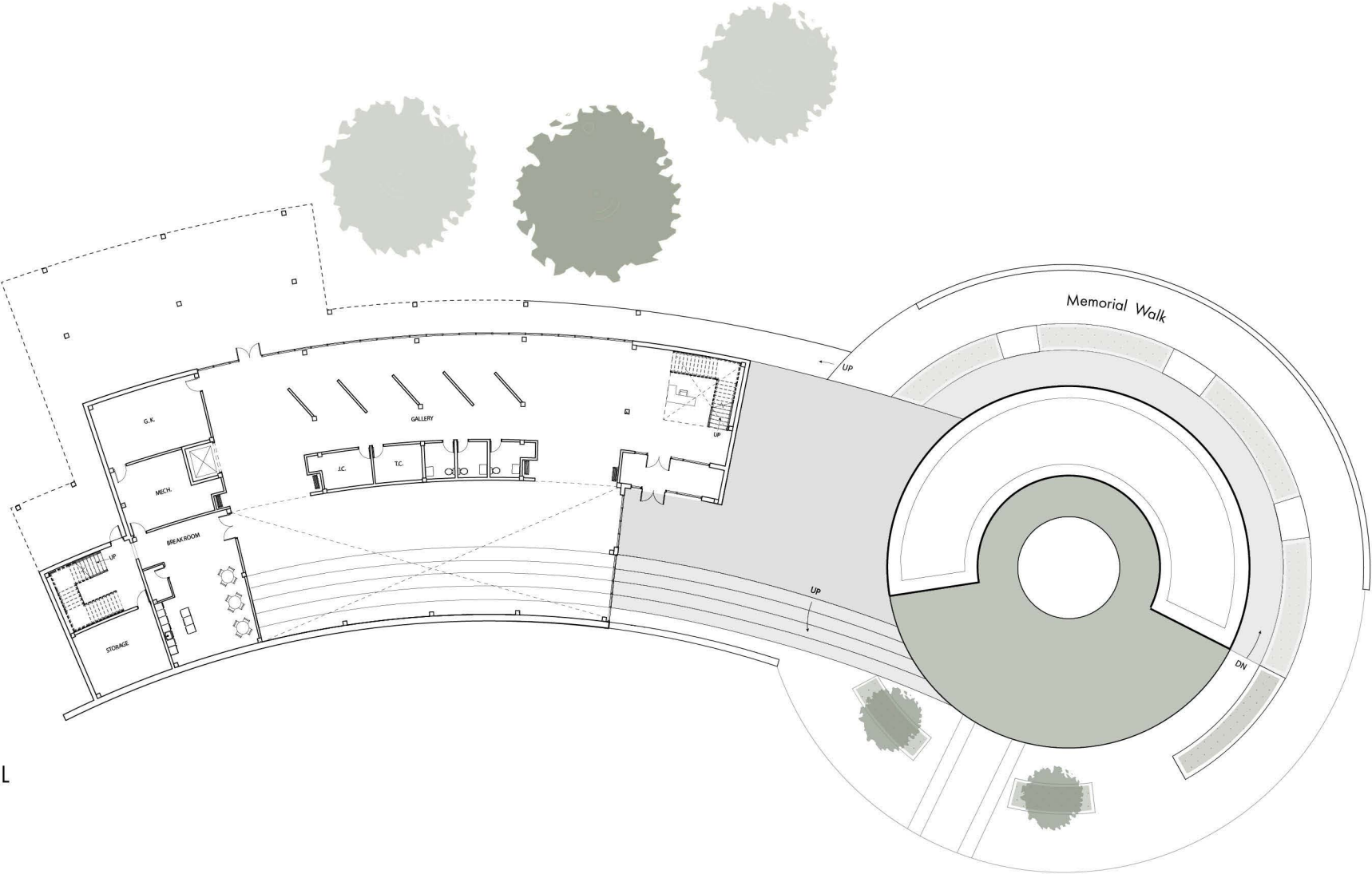
This project reimagines the Byron Scenic Overlook, a historic site overlooking the Monocacy National Battlefield, into a dynamic educational destination. Inspired by the site's rich Civil War history and dramatic topography, this design focuses on guiding visitors emotionally and physically through spaces of compression and expansion. The journey begins at a visitor center, wraps around a respectful memorial walk in homage to the lost soldiers, and culminates in an educational building with adaptive spaces for events and modular classrooms. Prioritizing different kinds of spaces for different kinds of learning encourages visitors of all ages to stay present in the experience. Sustainable elements honor the battlefield's legacy while creating an immersive gateway to history and community engagement.



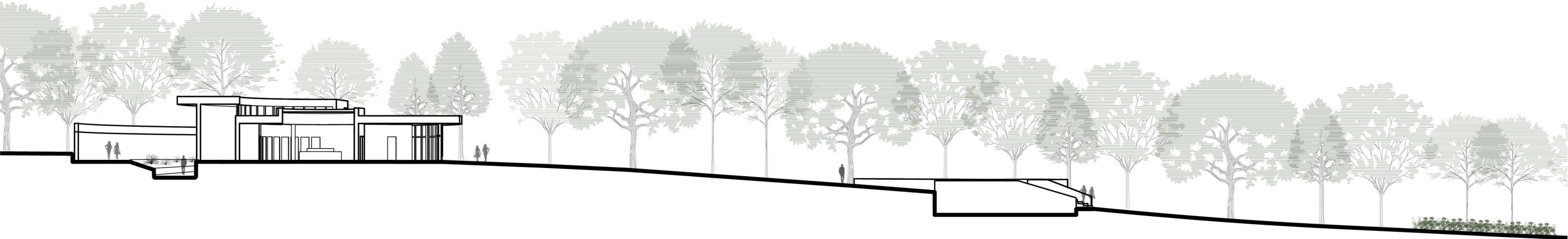
🕒 Site Plan



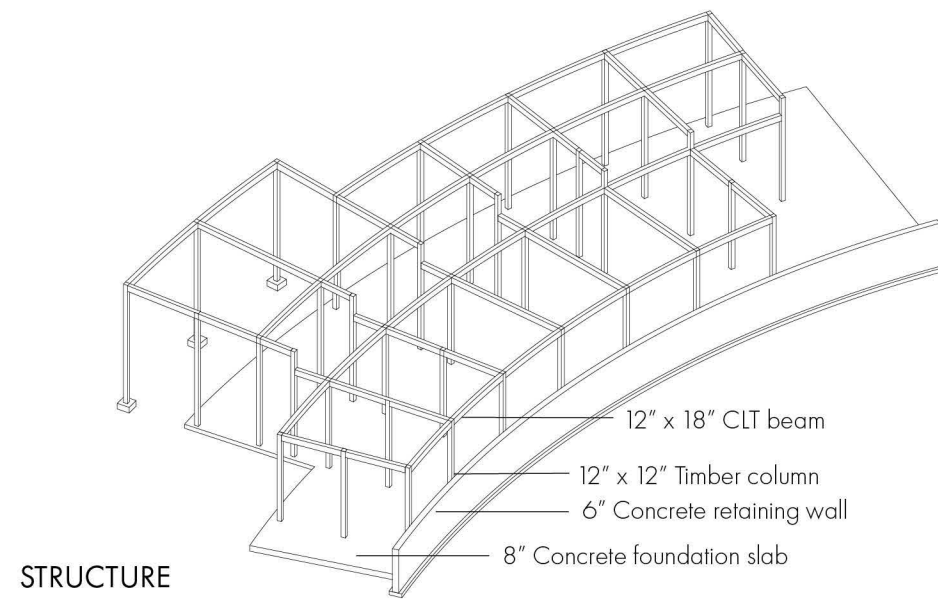
SECOND LEVEL



☉ GROUND LEVEL

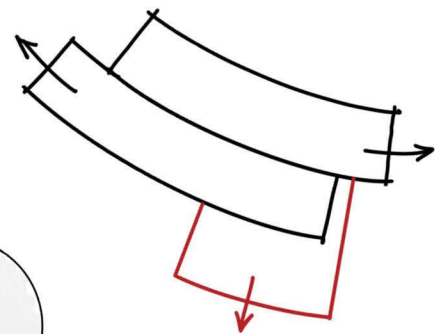


SITE SECTION

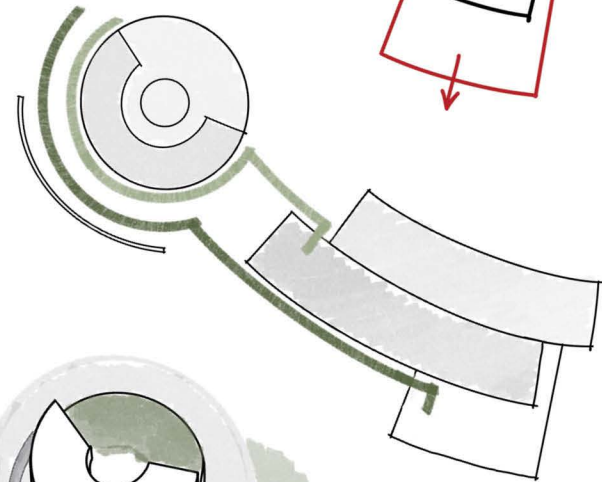


STRUCTURE

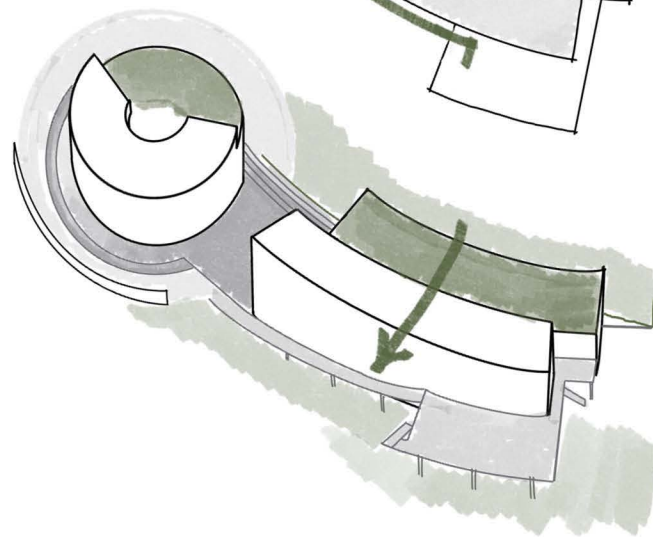
PARTI



CIRCULATION



SOFTSCAPE VS
HARDSCAPE



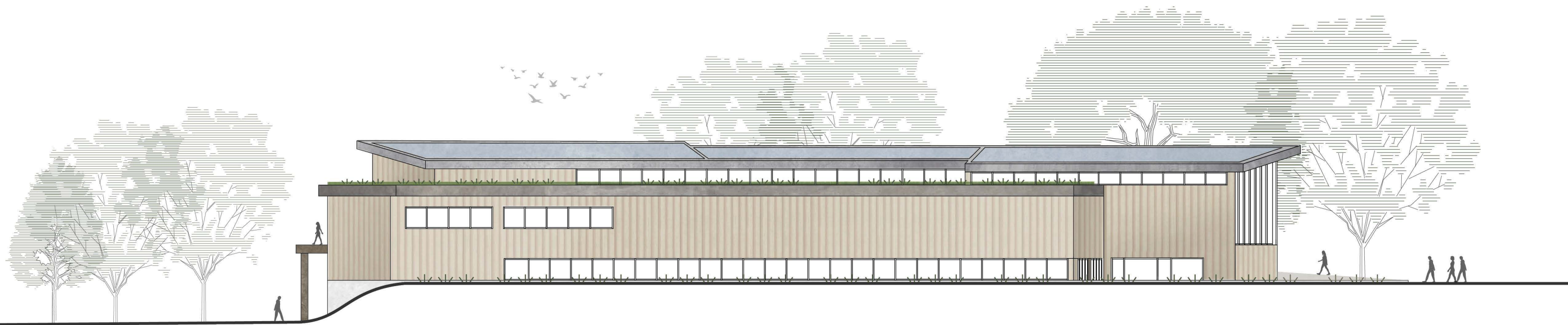
MULTI-PURPOSE ROOM PERSPECTIVE



ENTRY PERSPECTIVE



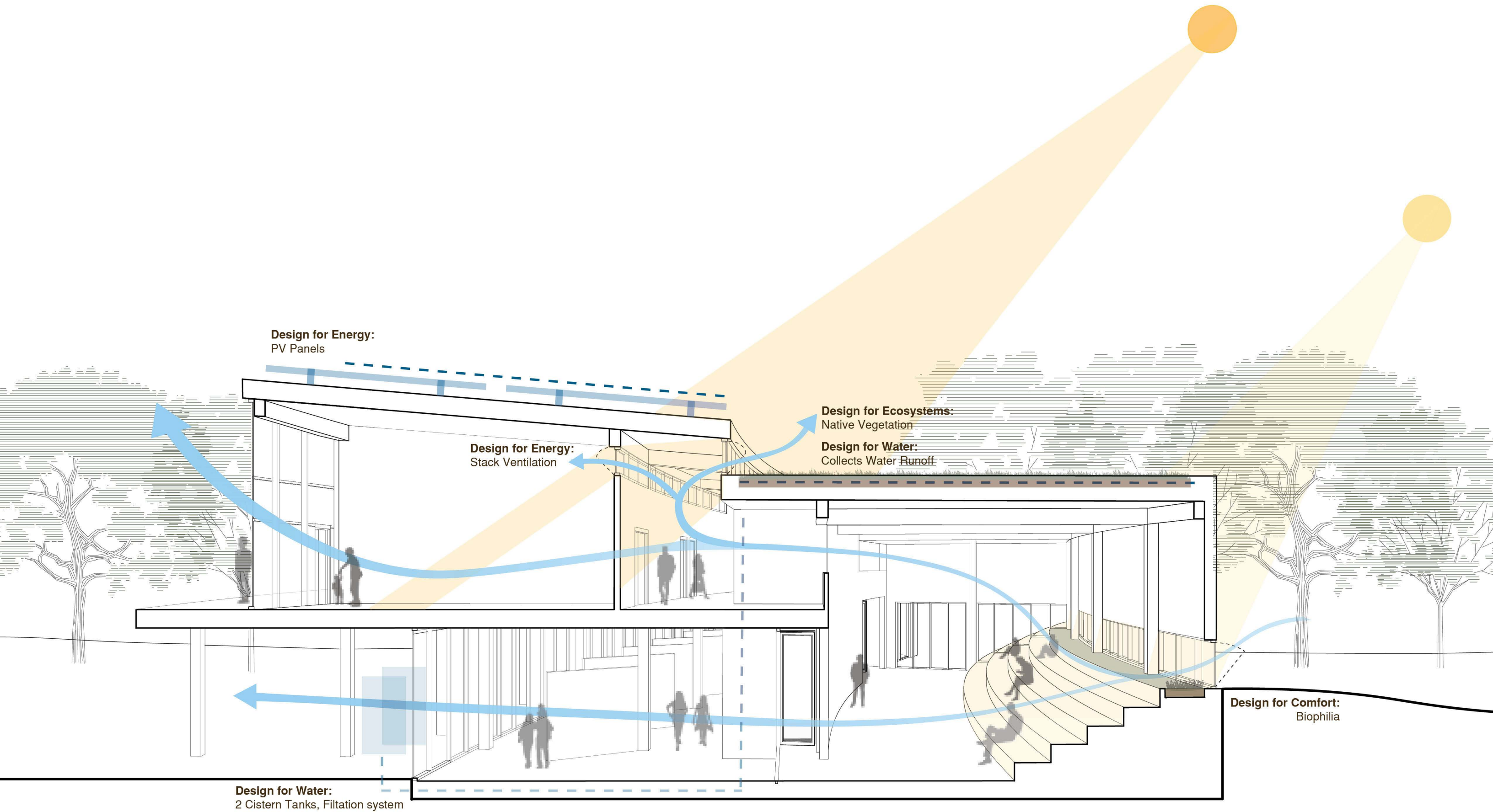
GALLERY PERSPECTIVE



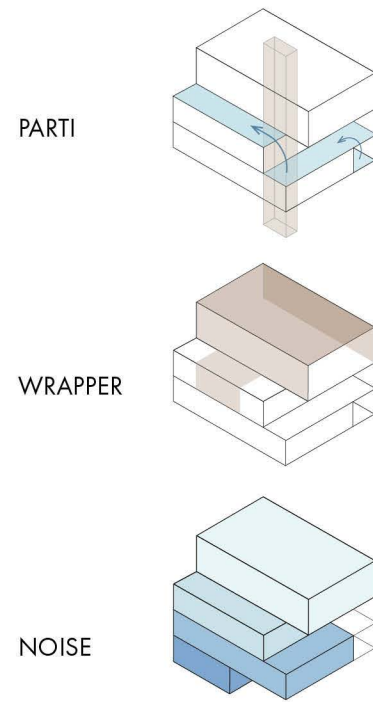
SOUTH ELEVATION



NORTH ELEVATION



SYNTHESIS DIAGRAM

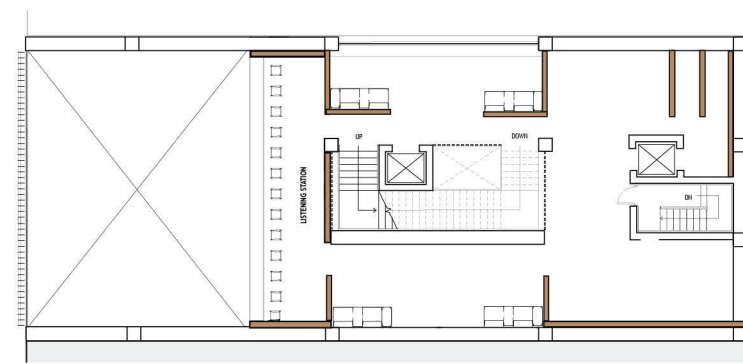


02 Music Library

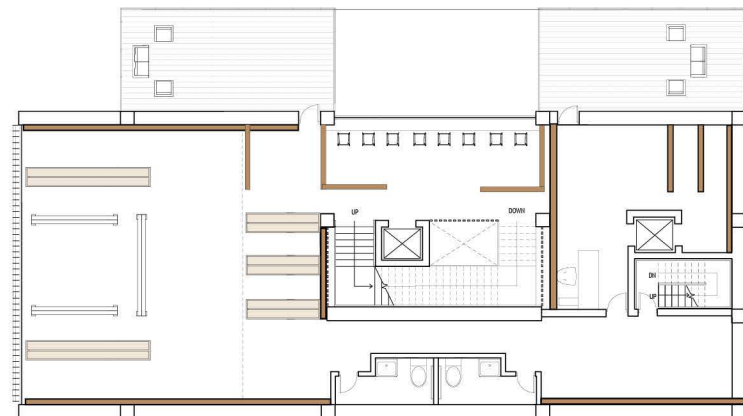
Located on DC's vibrant U Street, this music library honors the neighborhood's rich jazz heritage. Inspired by rhythm, the dynamic massing allows opportunity for outdoor balconies and attractions at every level, creating engaging study and reading spots throughout the building. A wrapping element of bookshelves and ceiling details knit the double-height, overlapping spaces. Visitors are encouraged to play acoustic music in the main book/music room a more engaging experience for other visitors browsing or taking in the views from the listening station balcony. For community events, the basement features a "speakeasy" for local performances.



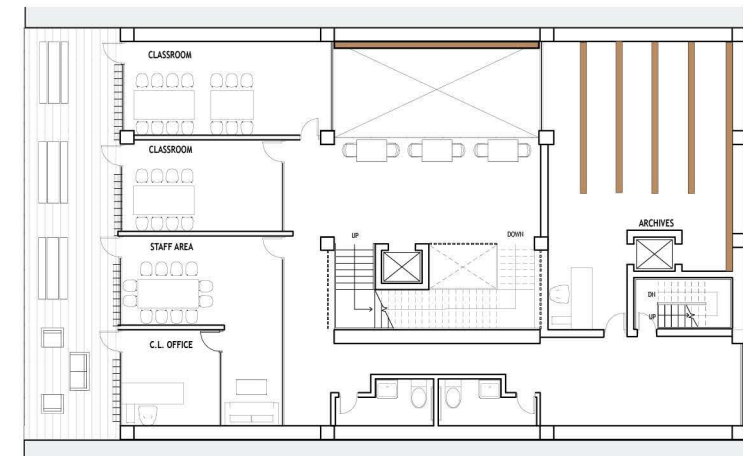
EXTERIOR PERSPECTIVE



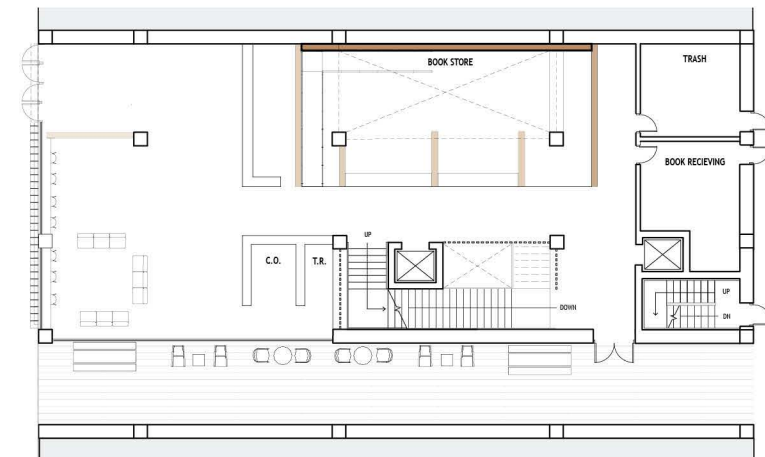
MEZZANINE



THIRD LEVEL



SECOND LEVEL



GROUND LEVEL



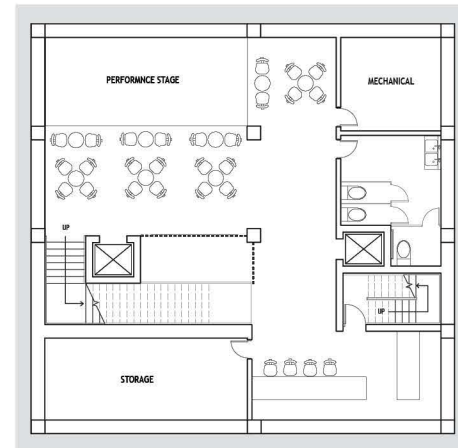
MEZZANINE PERSPECTIVE



THIRD LEVEL PERSPECTIVE



BASEMENT PERSPECTIVE



BASEMENT



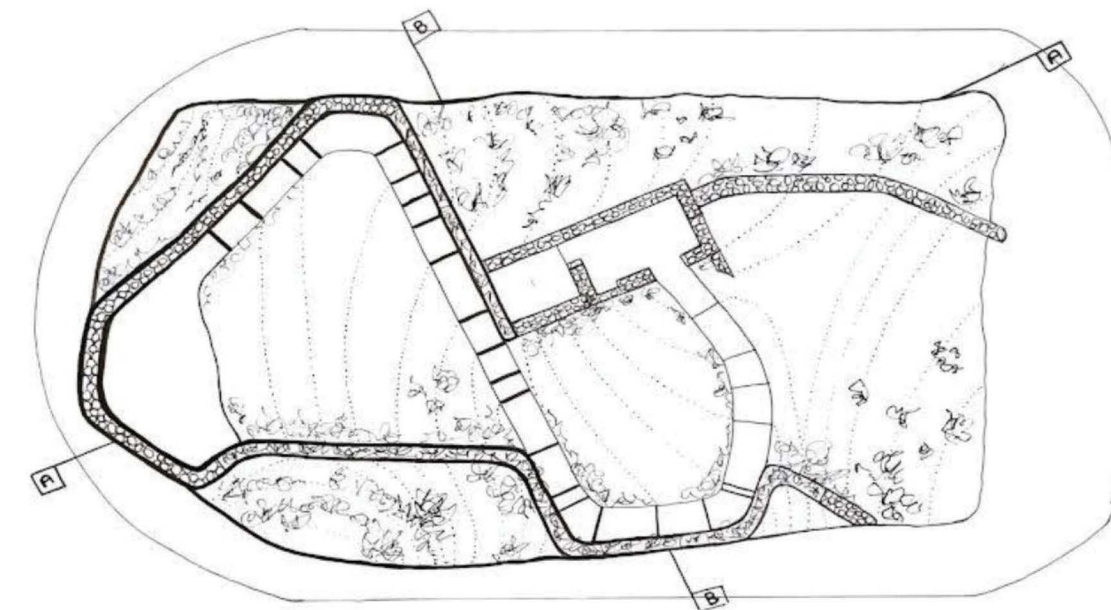
SECOND LEVEL PERSPECTIVE



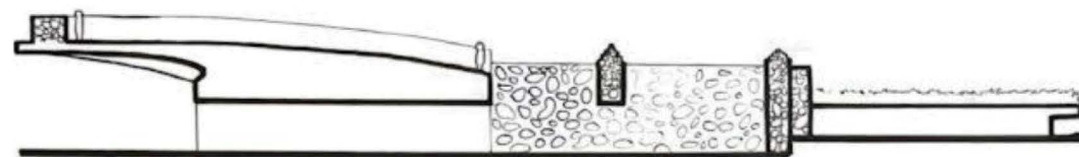
GROUND LEVEL PERSPECTIVE

03 Irish Hunger Memorial + Harbor Plaza

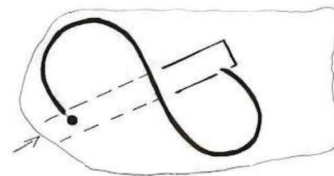
Dedicated to the Great Irish Potato Famine of 1845, the Irish Hunger Memorial in NY features an artificial hill. A dimly lit passage leads visitors beneath the peak of the mountain, enhancing their anticipation before they encounter a reconstructed Irish cottage, marking a transition between the past and present. The path then gradually redirects them to the top, where a balcony offers views and invites reflection on both the memorial and its urban context. This approach to creating a guided yet open movement through space inspired the design of my Harbor Plaza project. Given a kit of parts, I explored having a similar winding path in my design materiality to encourage moments of pause or gathering.



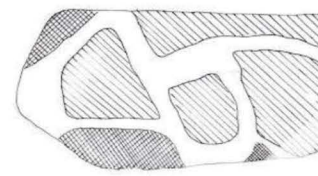
🕒 IRISH HUNGER MEMORIAL



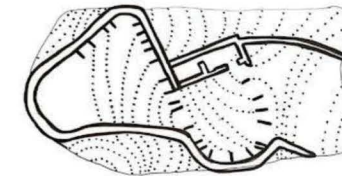
SECTION A



PARTI



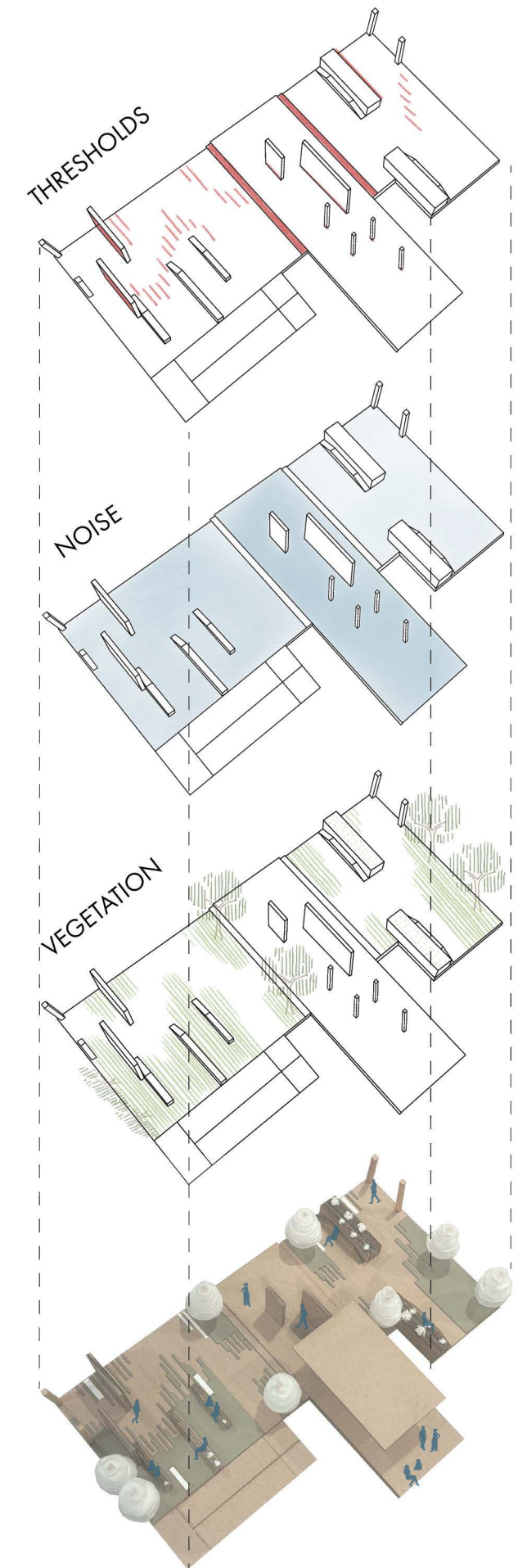
PUBLIC VS PRIVATE



HARDSCAPE VS SOFTSCAPE



HARBOR PLAZA PERSPECTICVE



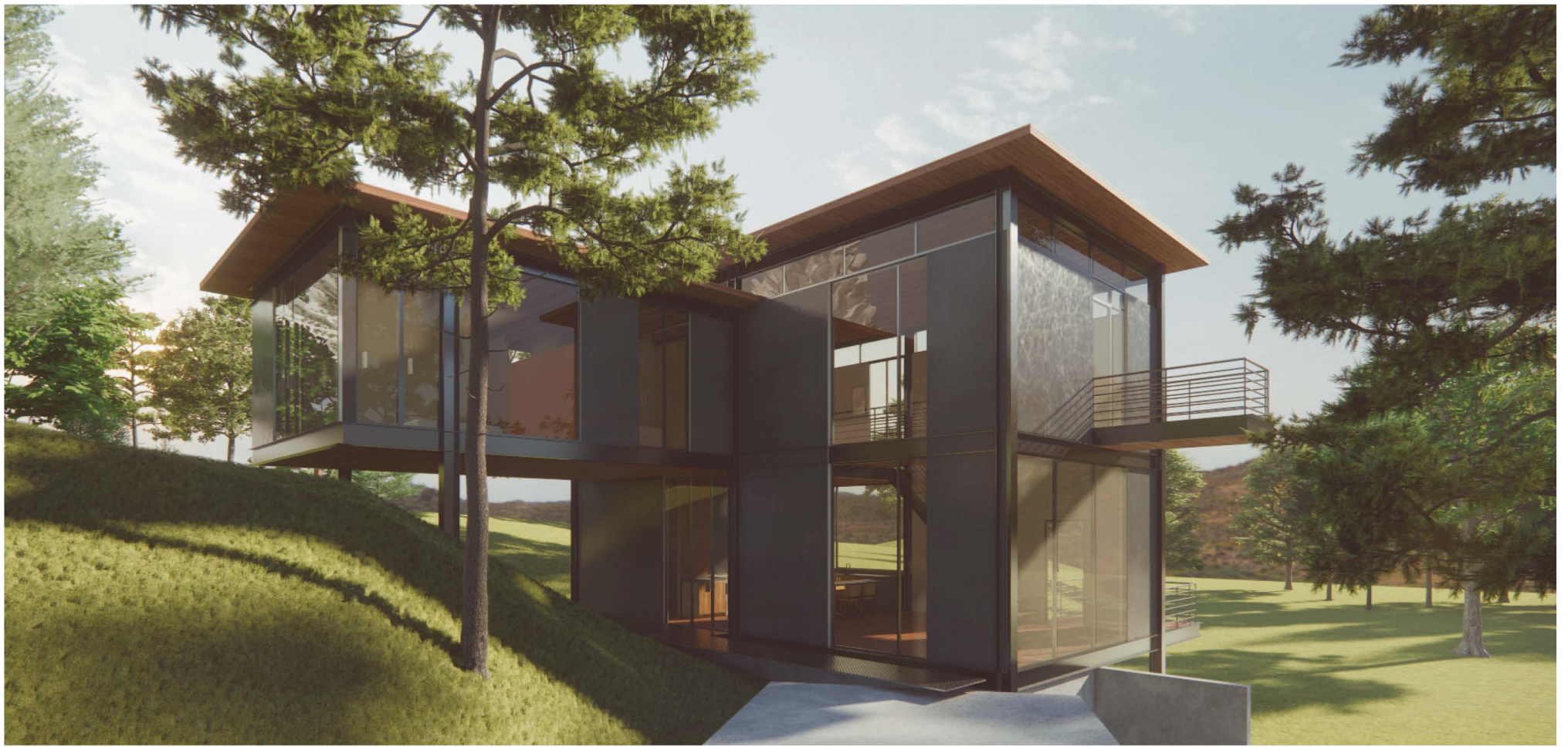


HARBOR PLAZZA PLAN

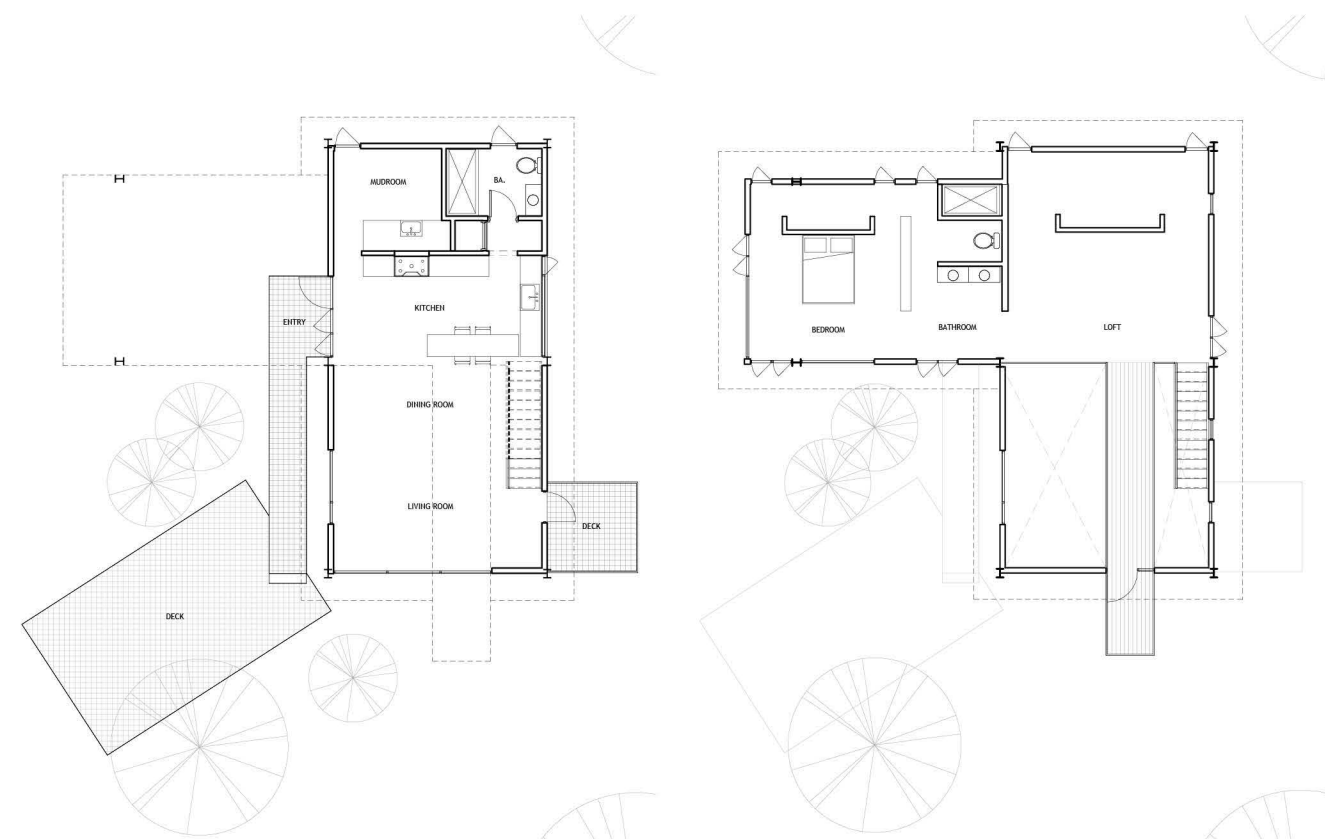
04 Goatbarn Lane House

Precedent Study

This semester-long project involved modeling the Goatbarn Lane House in Boulder, Colorado. We focused on interpreting architectural drawings and accurately representing the structure and materiality of the existing building using Revit software. Given a full set of drawings provided by the professor, I rebuilt the House and produced a new set of drawings solely through Revit to put accuracy of the 3D modeling to test. This project reinforced technical skills in visualizing and executing architectural concepts.

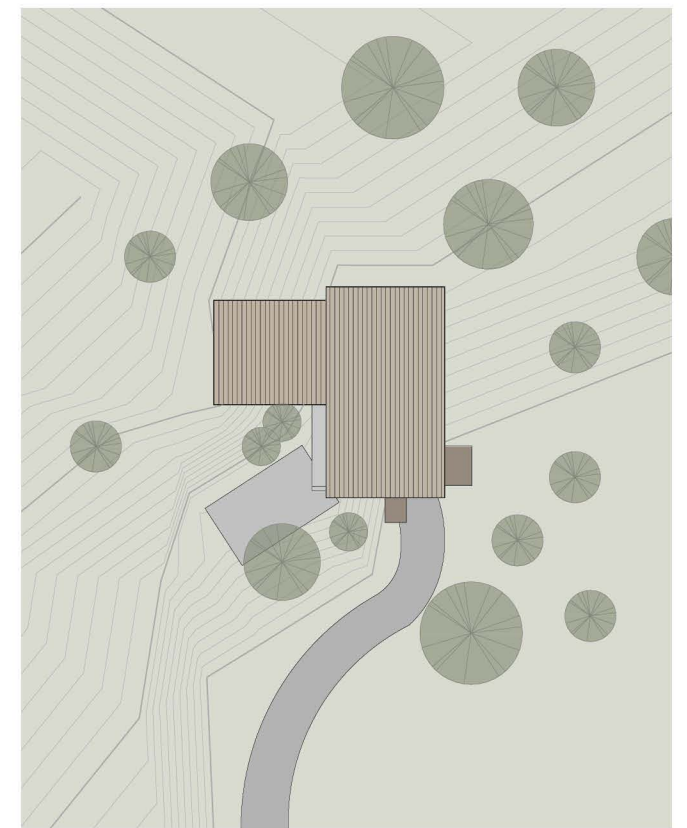


EXTERIOR PERSPECTIVE

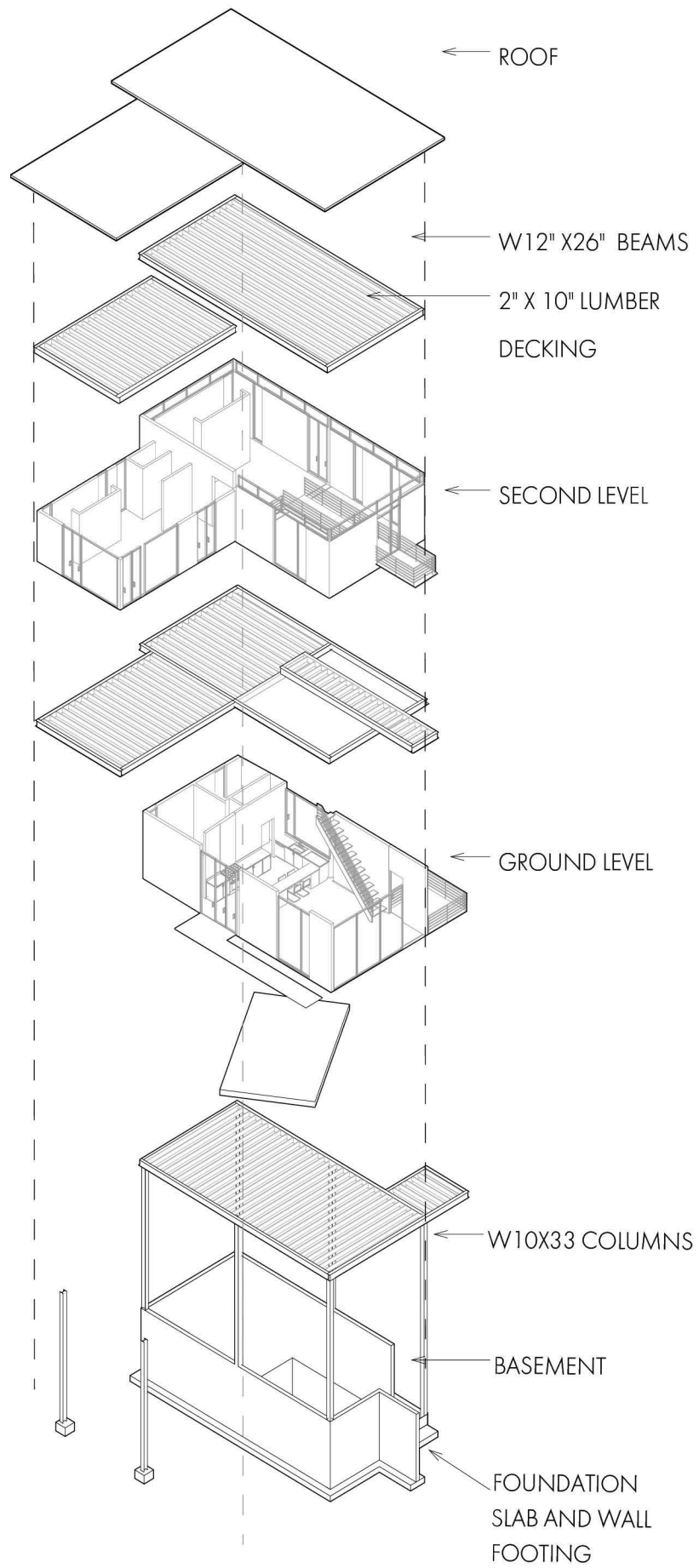


① GROUND LEVEL

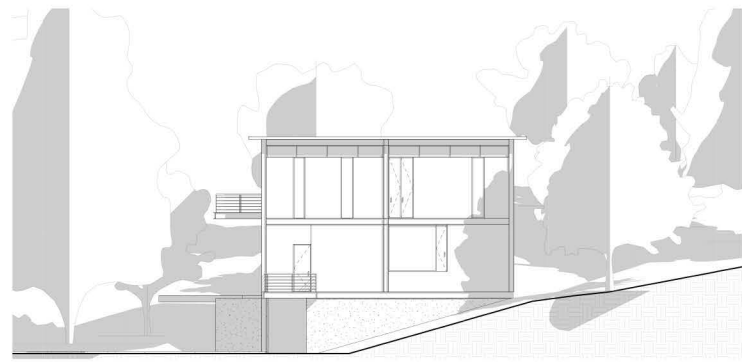
SECOND LEVEL



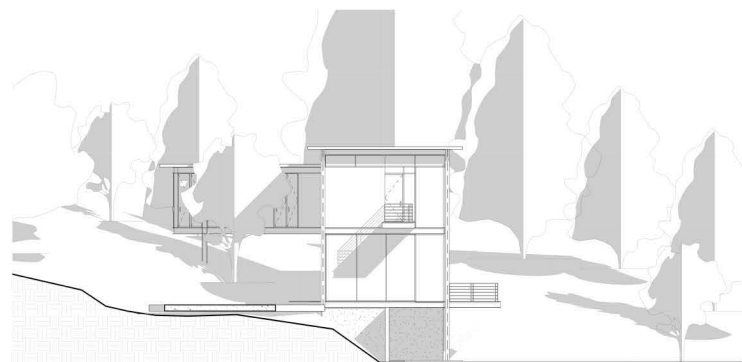
SITE PLAN



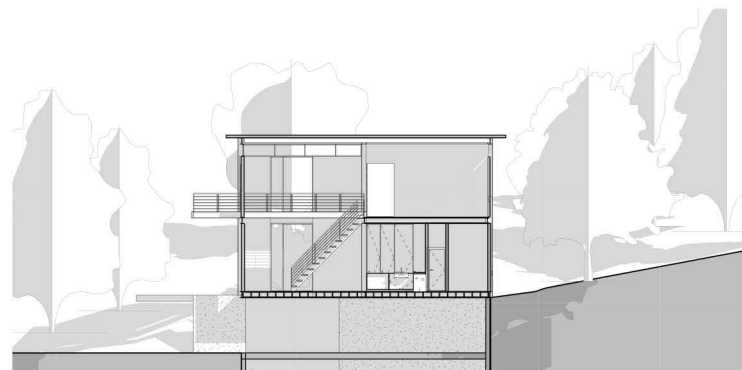
EXPLODED AXON STRUCTURE



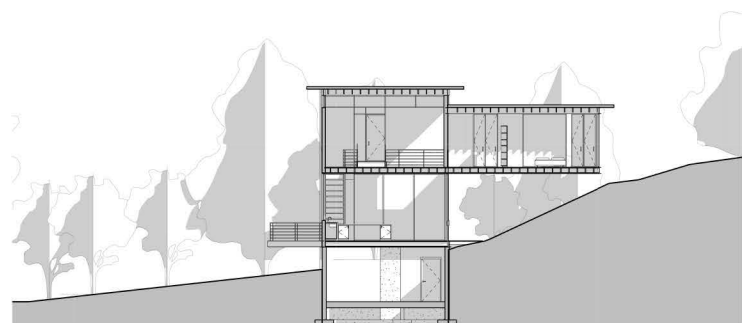
EAST ELEVATION



SOUTH ELEVATION



SECTION A



SECTION B



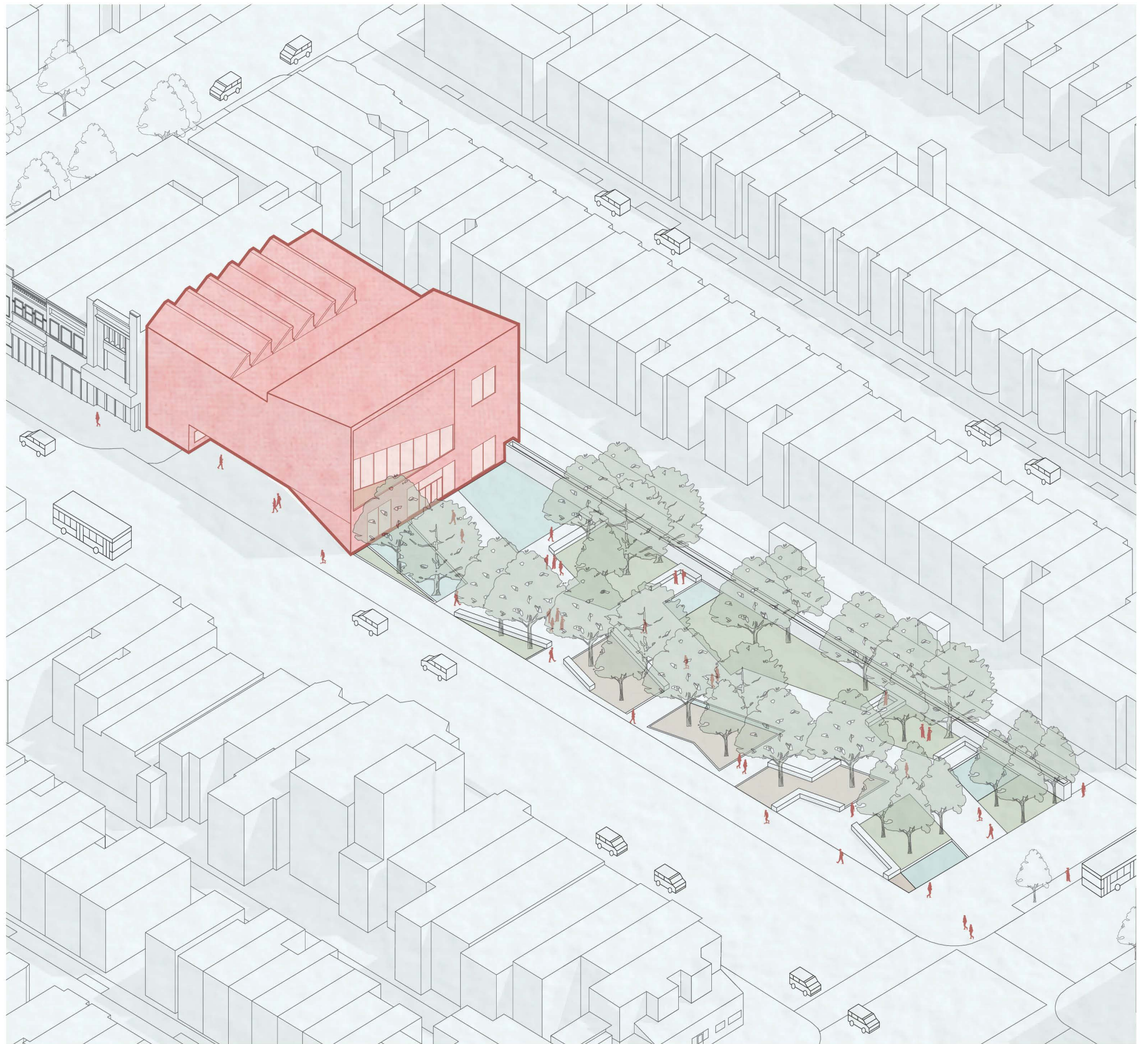
SECOND LEVEL PERSPECTIVE

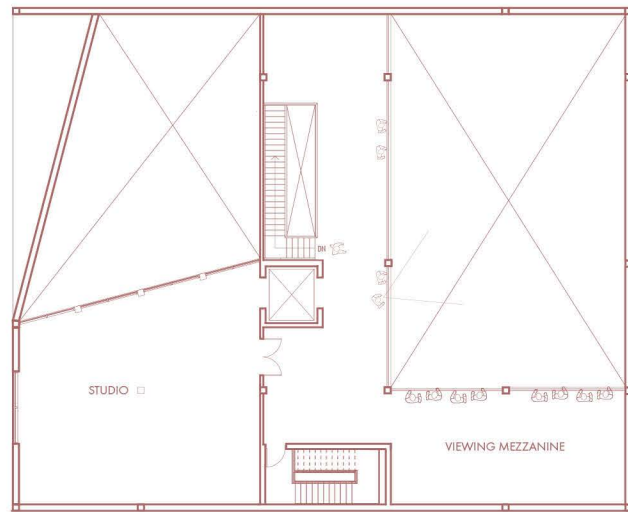


GROUND LEVEL PERSPECTIVE

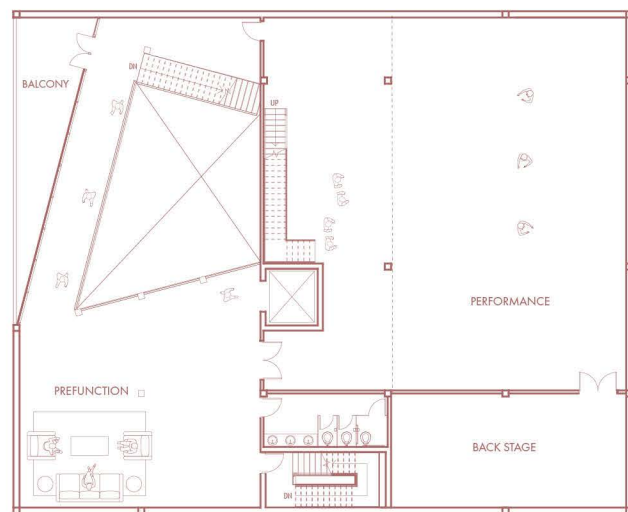
05 Performing Arts Center

Located on DC's H and 13th Street, this civic building transforms a chosen plaza (designed by peers) into a vibrant performing arts center. Inspired by the plaza's winding path, the building incorporates a trapezoidal motif in plan and section, symbolically breaking away from a more orthogonal mass and extending toward the site. Drawing from Ruby City, dynamic volume manipulation creates a striking entry point, while an internal diagonal bridge connects outdoor spaces, mirroring the plaza's flow. Skylights illuminate key areas, blending form and function, and fostering movement and interaction to enrich H Street's civic vitality.

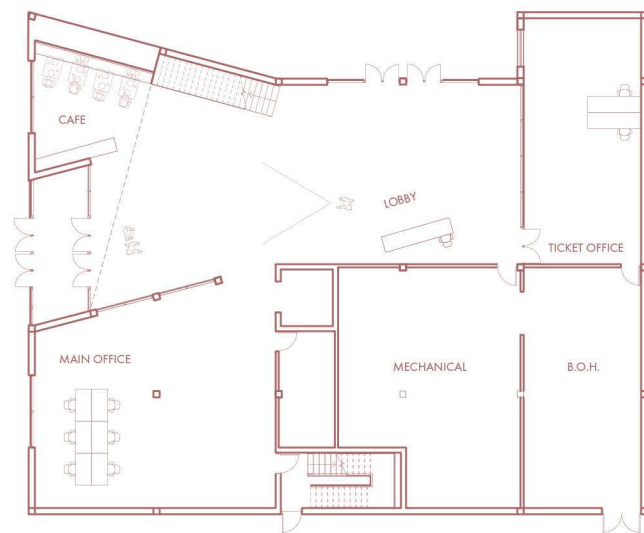




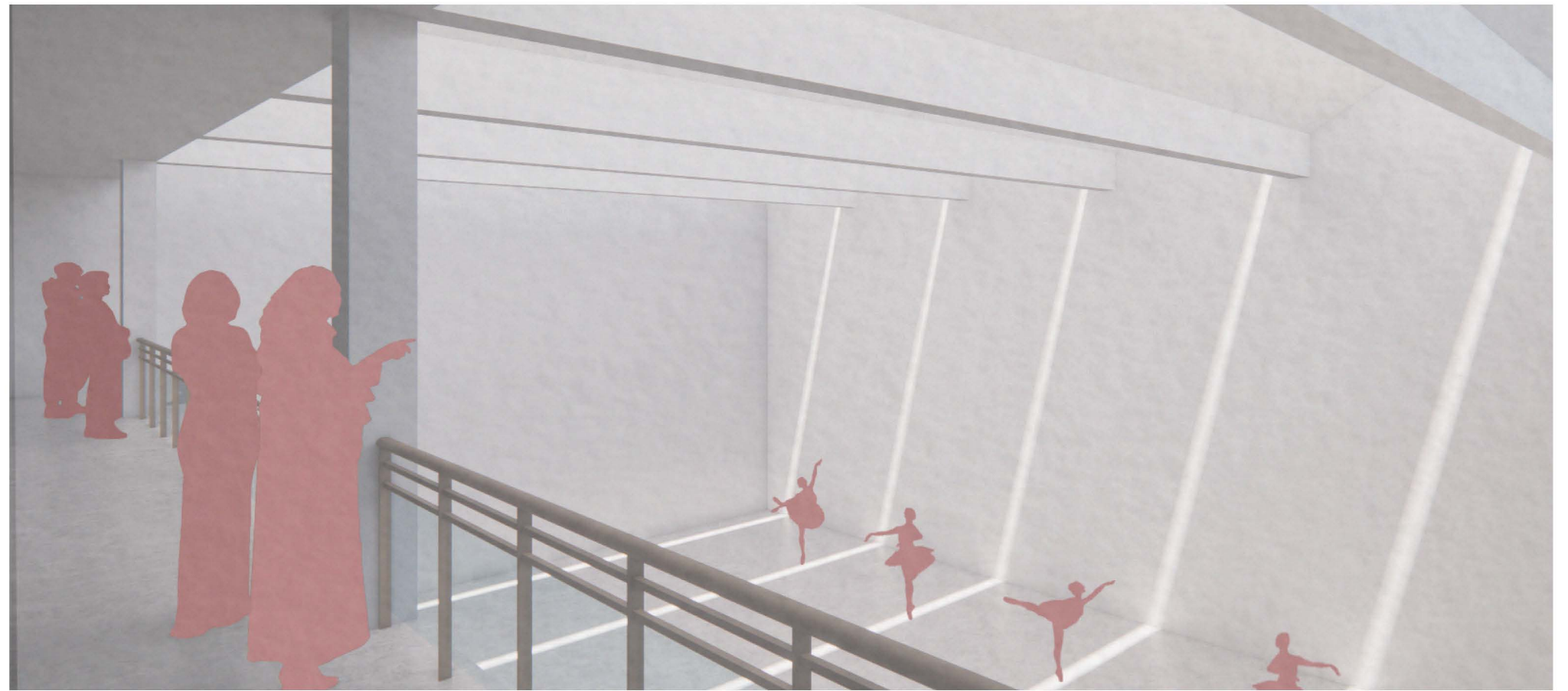
THIRD LEVEL



SECOND LEVEL



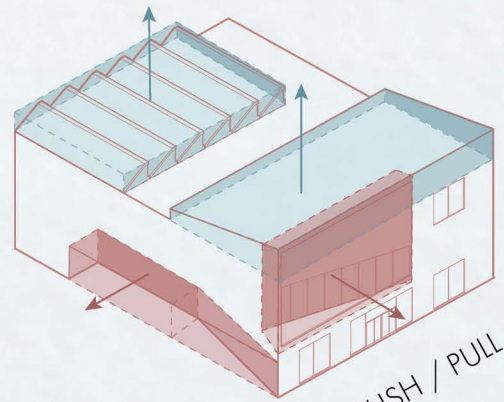
GROUND LEVEL



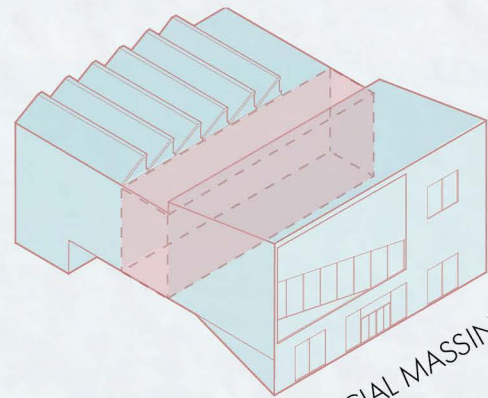
PERFORMANCE SPACE



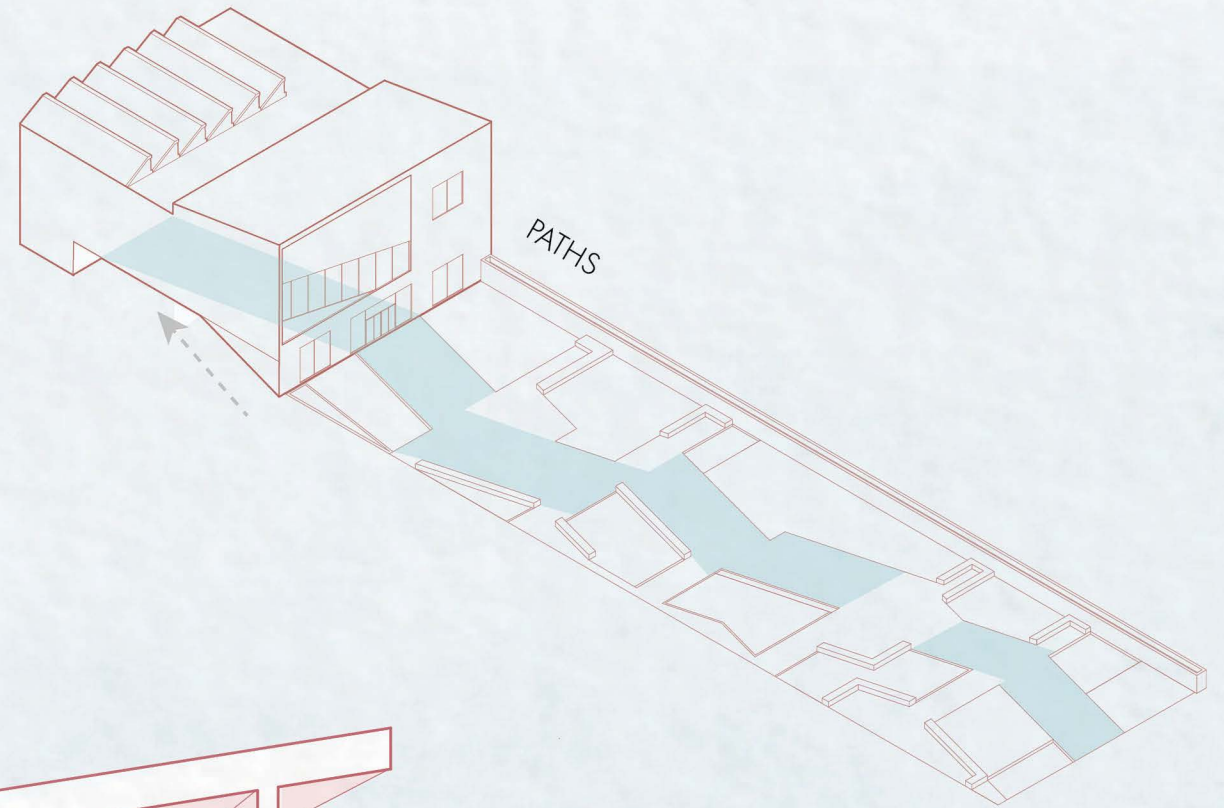
LOBBY PERSPECTIVE



PUSH / PULL



SPACIAL MASSING



PATHS

