



TRUGLOBAL

Import and export



Product Catalogue

Delivering Excellence through quality and innovation

Over 30 products and 100 variants

All drums and barrels can be made using mild steel (Ms),
galvanised iron steel(GI) or stainless steel(ss)

Tight Head Drums & Barrels

- 210 litre tight head barrel
- 210 litre GI barrel
- 210 litreSF barrel
- 185 litre bitumen drum
- 165 litre bitumen drum
- 100 litre drum
- 70 litre drum
- 60 litre drum
- 50 litre drum
- 30 litre drum
- 25 litre drum
- 25 kg drum
- 20 litre drum
- 15 litre drum
- 10 litre drum
- 5 litre drum

Open Head Drums & Barrels

- 250 litre barrel
- 235 litre barrel
- 210 litre neck in barrel
- 210 litre slim barrel
- 210 litre barrel
- 100 litre drum
- 70 litre drum
- 60 litre drum
- 50 litre drum
- 30 litre drum
- 25 litre drum
- 25 kg drum
- 20 litre drum
- 15 litre drum
- 10 litre drum
- 5 litre drum

TIGHT HEAD BARRELS

1

210

litre tight head
barrel 22 kg

Thickness: 18 swg
External Height: 88 cm
Internal Height: 84.4 cm
Outer Diameter: 57.1 cm
Weight: 22 kg
Mouth: 2" and 3/4" bungs with
cap seal



2

210

litre tight head
barrel 18 kg

Thickness: 20 swg
External Height: 88 cm
Internal Height: 84 cm
Outer Diameter: 57 cm
Weight: 18 kg
Mouth: 2" AND 3/4"
(For 50 and
20 mm closures)



3

185

litre bitumen barrel

Thickness: 24 swg
External Height: 100 cm
Internal Height: 96.6 cm
Outer Diameter: 50 cm
Weight: 10.5 kg
Mouth: 4" opening with lid



4

165

litre bitumen drum

Thickness: 24 swg
External Height: 88 cm
Internal Height: 85 cm
Outer Diameter: 50 cm
Weight: 9.3 kg
Mouth: 7" opening with lid



5

100

litre drum

Thickness: 24 or 26 swg
External Height: 72 cm
Internal Height: 70 cm
Outer Diameter: 46 cm
Weight: 7.6 kg
Mouth: 2" and 3/4" bungs with cap seal



6

50

litre drum

Thickness: 22 or 24 swg
External Height: 58.55 cm
Internal Height: 54.45 cm
Outer Diameter: 35 cm
Weight: 4.85 kg
Mouth: 2" and 3/4" bungs with outer cap seal



7

30

litre drum

Thickness: 24 or 26 swg
External Height: 55.2 cm
Internal Height: 52.1 cm
Outer Diameter: 28 cm
Weight: 3 kg
Mouth: 2" bungs with cap seal



8

25

litre drums

Thickness: 24 or 26 swg
 External Height: 45.3 cm
 Internal Height: 42.2 cm
 Outer Diameter: 28 cm
 Weight: 2.3 kg
 Mouth: 2" bungs with outer capseal



9

25

kg drum

Thickness: 24 or 26 swg
 External Height: 42 cm
 Internal Height: 38.9 cm
 Outer Diameter: 28 cm
 Weight: 2.4 kg
 Mouth: 7" closure with inner and outer lid



10

20

litre drums

Thickness: 24 or 26 swg
 External Height: 37.7 cm
 Internal Height: 34.6 cm
 Outer Diameter: 28 cm
 Weight: 1.9 kg
 Mouth: 4" closure with inner and outer lid



11

15

litre drums

Thickness: 24 or 26 swg
 External Height: 30.7 cm
 Internal Height: 27.6 cm
 Outer Diameter: 28 cm
 Weight: 1.5 kg
 Mouth: 4" closure with inner and outer lid



12

10

litre drums

Thickness: 24 or 26 swg
 External Height: 21.1 cm
 Internal Height: 18 cm
 Outer Diameter: 28 cm
 Weight: 1.3 kg
 Mouth: 4" closure with inner and outer lid



OPEN TOP BARRELS

1

250

litre
barrel

Thickness: 18, 20 or 22 swg
External Height: 101.8 cm
Internal Height: 98.5 cm
Outer Diameter: 57.1 cm
Weight: 19, 21 or 23 kg
Mouth: Open top with locking ring and nut bolt attachment and lever type attachment



2

235

litre
barrel

Thickness: 18, 20 and 22 swg
External Height: 96.8 cm
Internal Height: 94.3 cm
Outer Diameter: 57.1 cm
Weight: 19, 22 or 24 kg
Mouth: Open top with locking ring and nut bolt attachment and lever type attachment



3

NECK IN BARREL

210

litre
barrel

Thickness: 18, 20 and 22 swg
External Height: 87.8 cm
Internal Height: 85 cm
Outer Diameter: 57 cm
Weight: 16, 18, 20 and 22 kg
Mouth: Open top with locking ring and nut bolt attachment and lever type attachment



4

SLIM BARREL

210

litre
barrel

Thickness: 18, 20 and 22 swg
External Height: 89.8 cm
Internal Height: 86 cm
Outer Diameter: 54 cm
Weight: 16, 18, 20 and 22 kg
Mouth: Open top with locking ring and nut bolt attachment and lever type attachment



5

210

litre
barrel

Thickness: 18, 20 and 22 swg
 External Height: 87.8 cm
 Internal Height: 85 cm
 Outer Diameter: 57 cm
 Weight: 16, 18, 20 and 22 kg
 Mouth: Open top with locking ring and nut and bolt attachment and lever type attachment



16 kg



18 kg



22 kg

6

100

litre
barrel

Thickness: 24 or 26 swg
 External Height: 72 cm
 Internal Height: 70 cm
 Outer Diameter: 46 cm
 Weight: 7.6 kg
 Mouth: Full open with GI lever type/nut bolt type locking ring



7

60

litre
drum

Thickness: 22 or 24 swg
 External Height: 55.1 cm
 Internal Height: 52.9 cm
 Outer Diameter: 35 cm
 Weight: 5.8 kg
 Mouth: Full open with GI lever type/nut bolt type locking ring



8

50

litre
drum

Thickness: 24 swg
 External Height: 50 cm
 Internal Height: 47.8 cm
 Outer Diameter: 35 cm
 Weight: 5.6 kg
 Mouth: Full open with GI lever type/nut bolt type locking ring



9

25

litre
drum

Thickness: 24 or 26 swg
 External Height: 45.3 cm
 Internal Height: 42.2 cm
 Outer Diameter: 28 cm
 Weight: 2.3 kg
 Mouth: Full open with GI lever type/nut bolt type locking ring



EPI/LACQUER COATED



Specially coated and baked internally with phenolic or pigmented lacquer for filling food grade products

10

20

litre drum

Thickness: 24 and 26 swg
 External Height: 30.7 cm
 Internal Height: 27.6 cm
 Outer Diameter: 28 cm
 Weight: 2 kg
 Mouth: Full open with GI lever type/nut bolt type locking ring

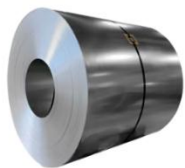


11

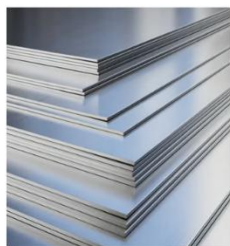
10

litre drum

Thickness: 24 and 26 swg
 External Height: 21.1 cm
 Internal Height: 18 cm
 Outer Diameter: 28 cm
 Weight: 1.3 kg
 Mouth: Full open with GI lever type/nut bolt type locking ring



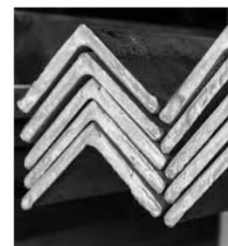
Steel coils



Steel sheets



Steel tubes



Steel angles



Steel bars

Truglobal imports and exports truglobal-enterprise.com

 truglobalcompany@gmail.com

 Kerala, India