



ECO GREEN ENERGY EU
The Future is Now

Eco Green Traffic Lights



Table of Content

01

**Partner
Company
Introduction**

PAGE 01-03

02

**Signal
Light**

PAGE 04-13

03

**Installation
Procedure**

PAGE 14

04

**Presentation
Chart**

PAGE 15-16



23+

YEAR LIGHTING EXPERIENCE

60.000+

SQUARE METER INDUSTRIAL ZONE

150+

EXPORTING COUNTRY



About Our Partner

Eco Green Energy partner is the earliest professional enterprise engaged in the manufacture of complete sets of transportation equipment. They was established in 1999 and has more than 340 employees, and is engaged in intelligent transportation and security projects. Always adhere to a specific development direction and serialize products. they put quality first; regard intelligent transportation and safety projects as outstanding work. So far, our partner has become a large-scale enterprise integrating product design, production, sales, service and engineering.

CERTIFICATE





02 SIGNAL LIGHT

Φ300 RYG TRAFFIC SIGNAL LIGHT

A
XT-001A
Φ300mm

series



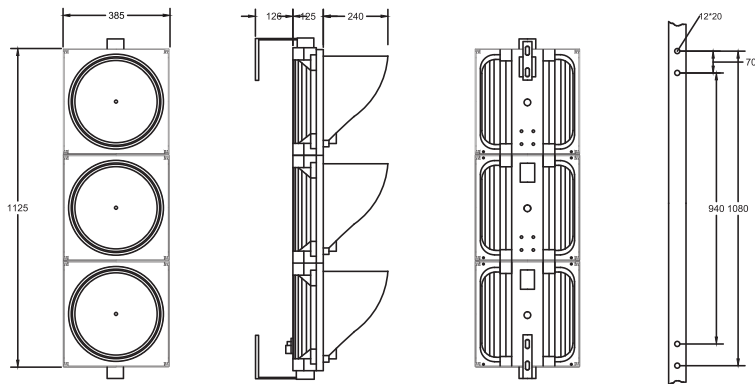
Features

- Automatically dimming High
- Long service life
- Consisting of many national patent
- luminous output Low power
- Novelty structure, appearance beauty
- Compatible with national standard GB14887-2011 and international standard
- consumption Large visual
- Multi-layer sealed, water and dust proof Unique
- angle
- optical system and uniform illumination

Specification

Model	Light color	Quantity of LED(pcs)	Light intensity(cd)	Wavelength (nm)	Visual angle(°)		Rated Power (W)	Operating temperature	Operating voltage	Outside material
					Left	Alow				
XT-001A	R ●	90	≥400	625±5	30	30	≤8	-40 ~ +80	100-240vac 12/24vdc	PC
	Y ●	90	≥400	590±5	30	30	≤8			
	G ●	90	≥400	505±2	30	30	≤8			

Dimensions and Packaging



L:1125.0mm W:385.0mm H:125.0mm

Packing Information

Model	Packing Size(mm)	Gross Weight(kg)	Volume (kg)/5000	Volume(m ³)	Packaging Materials
XT-001A	1220*490*240	8.00	15-19.5	0.53	Carton

Packing List

Lighting	L Bracket	Visor	m4x10 Bolt	Instructions	Certificate
1pcs	2	3	12	1	1

Φ300 MOTOR VEHICLE SIGNAL LIGHT

A
XT-002A
Φ300mm

series



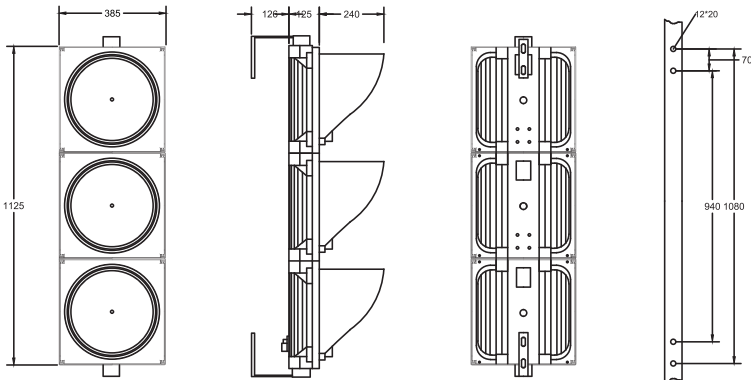
Features

- Automatically dimming High
- Long service life
- Consisting of many national patent
- luminous output Low power
- Novelty structure, appearance beauty
- Compatible with national standard GB14887-2011 and international standard
- consumption Large visual
- Multi-layer sealed, water and dust proof Unique
- angle
- optical system and uniform illumination

Specification

Model	Light color	Quantity of LED(pcs)	Light intensity(cd)	Wavelength (nm)	Visual angle(°)		Rated Power (W)	Operating temperature	Operating voltage	Outside material
					Left	Alow				
XT-002A	R →	75	≥4000/m ²	622±2	30	30	≤7	-40 ~ +80	100-240vac 12/24vdc	PC
	Y →	75	≥4000/m ²	592±2	30	30	≤7			
	G →	75	≥4000/m ²	502±2	30	30	≤7			

Dimensions and Packaging



L:1125.0mm W:385.0mm H:125.0mm

Packing Information

Model	Packing Size(mm)	Gross Weight(kg)	Volume (kg)/5000	Volume(m ³)	Packaging Materials
XT-002A	1220*490*240	10.50	15-19.5	0.08	Carton

Packing List

Lighting	L Bracket	Visor	m4x10 Bolt	Instructions	Certificate
1pcs	2	3	12	1	1

Φ300 NON-MOTOR VEHICLE SIGNAL LIGHT

A
XT-003A
Φ300mm



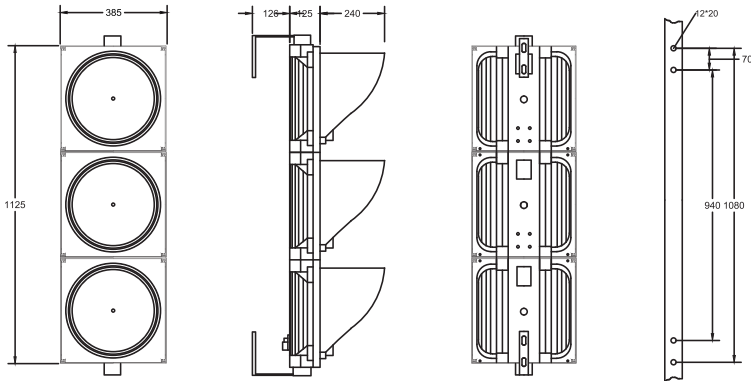
series Features

- Automatically dimming High
- Long service life
- Consisting of many national patent
- luminous output Low power
- Novelty structure, appearance beauty
- Compatible with national standard GB14887-2011 and international standard
- consumption Large visual
- Multi-layer sealed, water and dust proof Unique
- angle
- optical system and uniform illumination

Specification

Model	Light color	Quantity of LED(pcs)	Light intensity(cd)	Wavelength (nm)	Visual angle(°)		Rated Power (W)	Operating temperature	Operating voltage	Outside material
					Left	Alow				
XT-003A	R	90	≥4000/m ²	625±5	30	30	≤8	-40 ~ +80	100-240vac 12/24vdc	PC
	Y	90	≥4000/m ²	590±5	30	30	≤8			
	G	90	≥4000/m ²	505±2	30	30	≤8			

Dimensions and Packaging



L:1125.0mm W:385.0mm H:125.0mm

Packing Information

Model	Packing Size(mm)	Gross Weight(kg)	Volume (kg)/5000	Volume(m ³)	Packaging Materials
XT-003A	1220*490*240	10.50	15-19.5	0.08	Carton

Packing List

Lighting	L Bracket	Visor	m4x10 Bolt	Instructions	Certificate
1pcs	2	3	12	1	1

Φ300 PEDESTRIAN SIGNAL LIGHT

A
XT-004A
Φ300mm

series



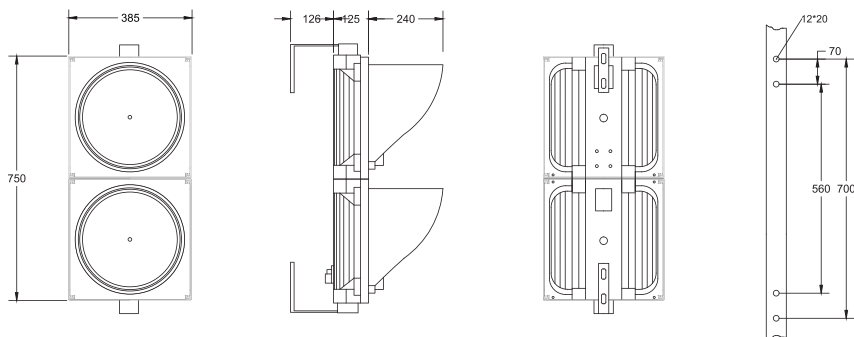
Features

- Automatically dimming High
- Long service life
- Consisting of many national patent
- luminous output Low power
- Novelty structure, appearance beauty
- Compatible with national standard GB14887-2011 and international standard
- consumption Large visual
- Multi-layer sealed, water and dust proof Unique
- angle
- optical system and uniform illumination

Specification

Model	Light color	Quantity of LED(pcs)	Light intensity(cd)	Wavelength (nm)	Visual angle(°)		Rated Power (W)	Operating temperature	Operating voltage	Outside material
					Left	Alow				
XT-004A	R	75	≥4000/m ²	622±2	30	30	≤7	-40 ~ +80	100-240vac 12/24vdc	PC
	G	66	≥4000/m ²	502±2	30	30	≤8			

Dimensions and Packaging



L:750.0mm W:385.0mm H:125.0mm

Packing Information

Model	Packing Size(mm)	Gross Weight(kg)	Volume (kg)/5000	Volume(m ³)	Packaging Materials
XT-004A	860*490*240	7.00	10-13	0.06	Carton

Packing List

Lighting	L Bracket	Visor	m4x10 Bolt	Instructions	Certificate
1pcs	2	2	8	1	1

Φ300 DYNAMIC PEDESTRIAN LIGHTS

A
XT-005A
Φ300mm

series



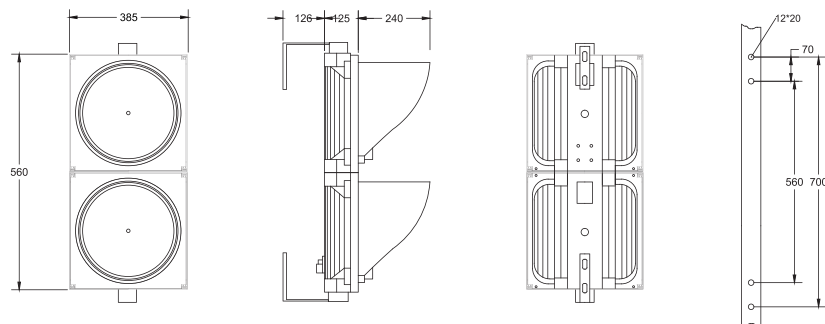
Features

- Automatically dimming High
- Long service life
- Consisting of many national patent
- luminous output Low power
- Novelty structure, appearance beauty
- Compatible with national standard GB14887-2011 and international standard
- consumption Large visual
- Multi-layer sealed, water and dust proof Unique
- angle
- optical system and uniform illumination

Specification

Model	Light color	Quantity of LED(pcs)	Light intensity(cd)	Wavelength (nm)	Visual angle(°)		Rated Power (W)	Operating temperature	Operating voltage	Outside material
					Left	Alow				
XT-005A	R	75	≥4000/m ²	622±2	30	30	≤7	-40 ~ +80	100-240vac 12/24vdc	PC
	G	125	≥4000/m ²	502±2	30	30	≤14			

Dimensions and Packaging



L:750.0mm W:385.0mm H:125.0mm

Packing Information

Model	Packing Size(mm)	Gross Weight(kg)	Volume (kg)/5000	Volume(m ³)	Packaging Materials
XT-005A	860*490*240	7.00	10-13	0.06	Carton

Packing List

Lighting	L Bracket	Visor	m4x10 Bolt	Instructions	Certificate
1pcs	2	2	8	1	1

Φ300 DYNAMIC PEDESTRIAN SIGNAL LIGHT WITH COUNTDOWN

A series
XT-006A
Φ300mm



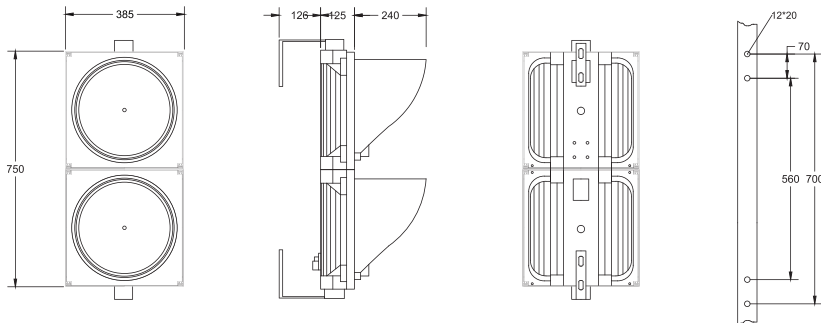
Features

- Automatically dimming High
- Long service life
- luminous output Low power
- Novelty structure, appearance beauty
- consumption Large visual
- Multi-layer sealed, water and dust proof Unique
- angle
- optical system and uniform illumination
- Consisting of many national patent
- Compatible with national standard GB14887-2011 and international standard

Specification

Model	Light color	Quantity of LED(pcs)	Light intensity(cd)	Wavelength (nm)	Visual angle(°)		Rated Power (W)	Operating temperature	Operating voltage	Outside material
					Left	Alow				
XT-006A	R 8	168	≥4000/m ²	622±2	30	30	≤10	-40 ~ +80	100-240vac 12/24vdc	PC
	G 8	140	≥4000/m ²	502±2	30	30	≤10			
	R 8	66	≥4000/m ²	622±2	30	30	≤7			
	G 8	125	≥4000/m ²	502±2	30	30	≤12			

Dimensions and Packaging



L:750.0mm W:385.0mm H:125.0mm

Packing Information

Model	Packing Size(mm)	Gross Weight(kg)	Volume (kg)/5000	Volume(m ³)	Packaging Materials
XT-006A	860*490*240	7.00	10-13	0.06	Carton

Packing List

Lighting	L Bracket	Visor	m4x10 Bolt	Instructions	Certificate
1pcs	2	2	8	1	1

Φ300 RED CROSS AND GREEN ARROW SIGNAL LIGHT

A series
XT-007A
Φ300mm



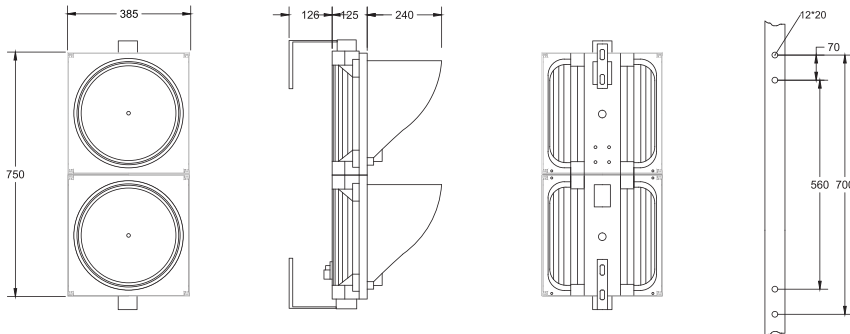
Features

- Automatically dimming High
- Long service life
- Consisting of many national patent
- luminous output Low power
- Novelty structure, appearance beauty
- Compatible with national standard GB14887-2011 and international standard
- consumption Large visual
- Multi-layer sealed, water and dust proof Unique
- angle
- optical system and uniform illumination

Specification

Model	Light color	Quantity of LED(pcs)	Light intensity(cd)	Wavelength (nm)	Visual angle(°)		Rated Power (W)	Operating temperature	Operating voltage	Outside material
					Left	Alow				
XT-007A	R X	93	≥4000/m ²	625±5	30	30	≤8	-40 ~ +80	100-240vac 12/24vdc	PC
	G ↓	75	≥4000/m ²	505±2	30	30	≤8			

Dimensions and Packaging



L:750.0mm W:385.0mm H:125.0mm

Packing Information

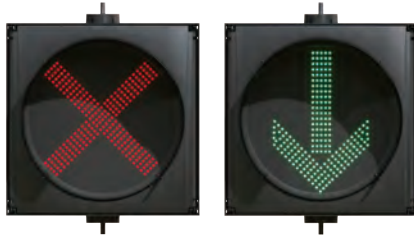
Model	Packing Size(mm)	Gross Weight(kg)	Volume (kg)/5000	Volume(m ³)	Packaging Materials
XT-007A	860*490*240	7.00	10-13	0.06	Carton

Packing List

Lighting	L Bracket	Visor	m4x10 Bolt	Instructions	Certificate
1pcs	2	2	8	1	1

Φ300 RED CROSS AND GREEN ARROW IN ONE UNIT SIGNAL LIGHT

A series
XT-008A
Φ300mm



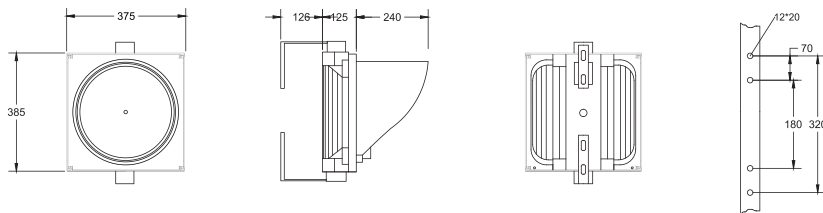
Features

- Automatically dimming High
- Long service life
- luminous output Low power
- Novelty structure, appearance beauty
- consumption Large visual
- Multi-layer sealed, water and dust proof Unique
- angle
- optical system and uniform illumination
- Consisting of many national patent
- Compatible with national standard GB14887-2011 and international standard

Specification

Model	Light color	Quantity of LED(pcs)	Light intensity(cd)	Wavelength (nm)	Visual angle(°)		Rated Power (W)	Operating temperature	Operating voltage	Outside material
					Left	Allow				
XT-008A	R X	93	≥4000/m ²	625±5	30	30	≤8	-40 ~ +80	100-240vac 12/24vdc	PC
	G ↓	75	≥4000/m ²	505±2	30	30	≤8			

Dimensions and Packaging



L:375.0mm W:385.0mm H:125.0mm

Packing Information

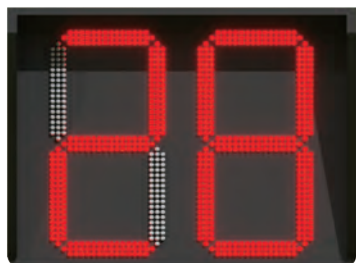
Model	Packing Size(mm)	Gross Weight(kg)	Volume (kg)/5000	Volume(m ³)	Packaging Materials
XT-008A	500*490*240	7.00	5-6.5	0.06	Carton

Packing List

Lighting	L Bracket	Visor	m4x10 Bolt	Instructions	Certificate
1pcs	2	1	4	1	1

TRI-COLOR TWO DIGIT COUNTDOWN TIMER

XT-009A
750*600*80mm



Features

- Advanced optical system combined with high bright LEDs to meet maximum requirement of light intensity and visual angle
- Controlled by monolithic processor to completely synchronize with controller, and indicate red, yellow and green signal light correctly to guarantee traffic safety
- Minimum display time 1 second and maximum display time 99 seconds, 199 seconds and 999 seconds by A, B and C type respectively
- Made of Die-cast aluminum alloy with elegant appearance, rugged structure and excellent sealing performance

Specification

Model	Luminous components	Quantity of LED(pcs)	Operating voltage	Rated Power (W)	Light intensity	Luminous color	Character height	Digits of strings	Visual distance	Max display time	Material	Outer size (mm)
XT-009A	LED	R8 168	220V (110V) 50 /60 HZ	< 40W	≥4000 cd/m ²	R/Y/G	20inch	Two digits	≥200m	99 seconds	steel plate	750*600*80
		G8 140										

TRI-COLOR TWO & HALF DIGIT COUNTDOWN TIMER

XT-009B
820*600*80mm



Features

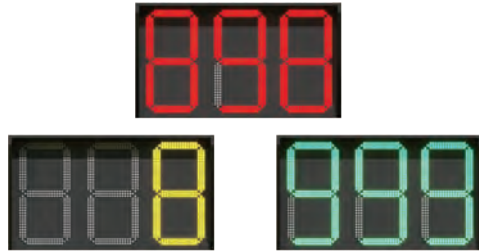
- Advanced optical system combined with high bright LEDs to meet maximum requirement of light intensity and visual angle
- Controlled by monolithic processor to completely synchronize with controller, and indicate red, yellow and green signal light correctly to guarantee traffic safety
- Minimum display time 1 second and maximum display time 99 seconds, 199 seconds and 999 seconds by A, B and C type respectively
- Made of Die-cast aluminum alloy with elegant appearance, rugged structure and excellent sealing performance

Specification

Model	Luminous components	Quantity of LED(pcs)	Operating voltage	Rated Power (W)	Light intensity	Luminous color	Character height	Digits of strings	Visual distance	Max display time	Material	Outer size (mm)
XT-009B	LED	R8 400	220V (110V) 50 /60 HZ	< 40W	≥4000 cd/m ²	R/Y/G	20inch	Two and half digits	≥200m	199 seconds	steel plate	820*600*80
		G8 400										
		Y8 400										

TRI-COLOR THREE DIGIT COUNTDOWN TIMER

XT-009C
1100*660*80mm



Features

- Advanced optical system combined with high bright LEDs to meet maximum requirement of light intensity and visual angle
- Controlled by monolithic processor to completely synchronize with controller, and indicate red, yellow and green signal light correctly to guarantee traffic safety
- Minimum display time 1 second and maximum display time 99 seconds, 199 seconds and 999 seconds by A, B and C type respectively
- Made of Die-cast aluminum alloy with elegant appearance, rugged structure and excellent sealing performance

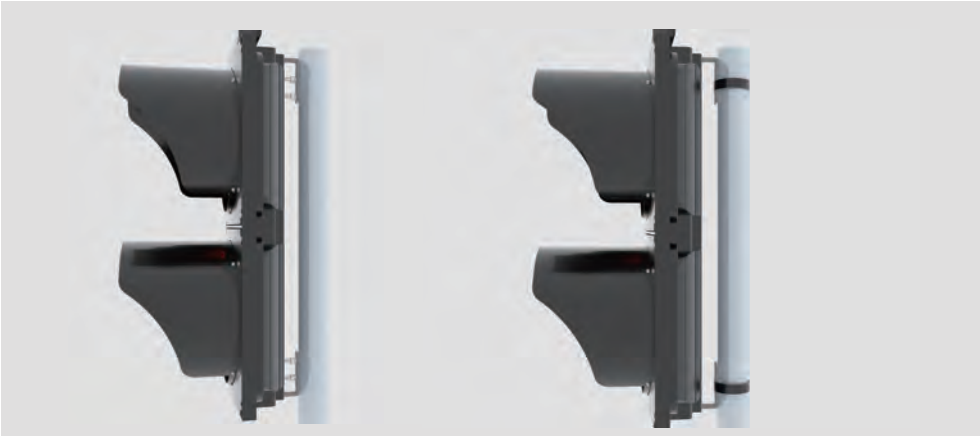
Specification

Model	Luminous components	Quantity of LED(pcs)	Operating voltage	Rated Power (W)	Light intensity	Luminous color	Character height	Digits of strings	Visual distance	Max display time	Material	Outer size (mm)
XT-009C	LED	R8 525	220V (110V) 50 /60 HZ	< 40W	≥4000 cd/m ²	R/Y/G	20inch	Three and half digits	≥ 200m	999 seconds	steel plate	1100*660*80
		G8 525										
		Y8 525										



03 INSTALLATION PROCEDURE

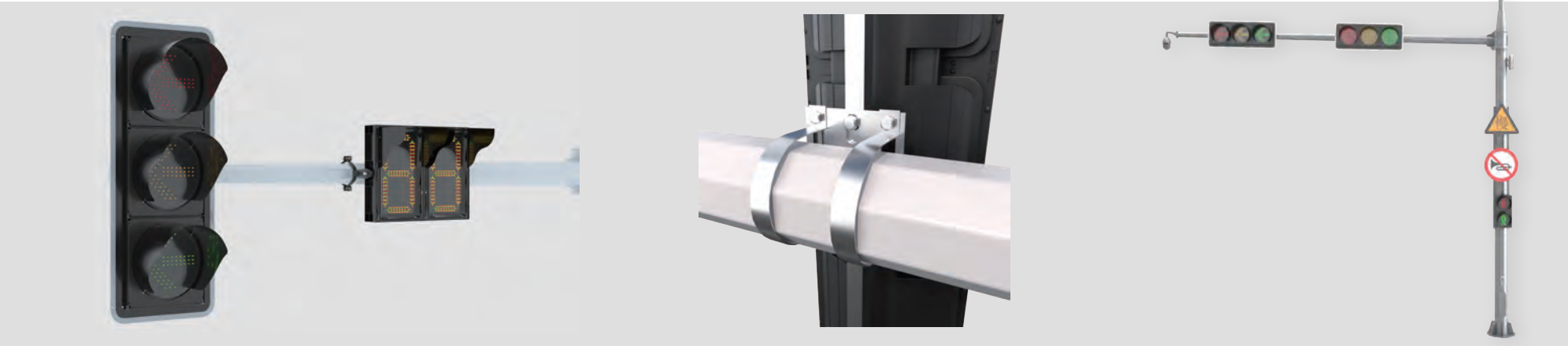
L-bracket Mounting



Horizontal Installation: Hoop Installation



Vertical Installation: Type I Bracket



04 PRESENTATION







ECO GREEN ENERGY EU

The Future is Now

