



ECO GREEN ENERGY EU

The Future is Now



MANUFACTURER PROFILE

Our partner is a high-tech enterprises engaged in the R&D, manufacturing and marketing, focusing on the development and appliance of solar mounting system, solar mounting accessories, solar power system and other clean energy products.

Years of experience in the photo voltaic industry as well as strong research and development capabilities and fast, high-quality manufacturing capabilities enable us to respond to any rapid needs of our customers. In line with the concept of "integrity first, people-oriented, talent as the core competitiveness", attaches importance to the career planning and personal development of employees, has a strong corporate cohesion, has initially built a global marketing and promotion, with rich experience in photo voltaic mounting structure design, research and development capabilities and fast high-quality manufacturing capabilities, committed to becoming a one-stop new energy manufacturers, partners, To provide customers with stable, convenient, cost-effective photo voltaic system mounting structure series solutions.

With the development of society, the increasing demand for energy, the depletion of traditional energy and the deterioration of climate environment seriously affect and restrict the sustainable development of social economy.



PRODUCT INTRODUCTION

Roof Mounting System

- Metal Roof Mounting Series ————— 03
- Metal Roof L-Foot Series ————— 05
- Roof Hook Series ————— 07
- Adjustable Front And Rear Leg ————— 08
- Flat Roof Mounting Series ————— 09
- Flat Roof Mounting Series ————— 13
- Quick Mounting Rail Series/Other Accessories ————— 15

Ground Solar Mounting Series

- Aluminum Ground Mount ————— 21
- Steel Ground Mount ————— 22
- PHC Pile Ground Mount ————— 24
- Pole Steel Ground Mount ————— 25
- Ground Screw Solar Mount ————— 26

Carport Solar Mounting Series

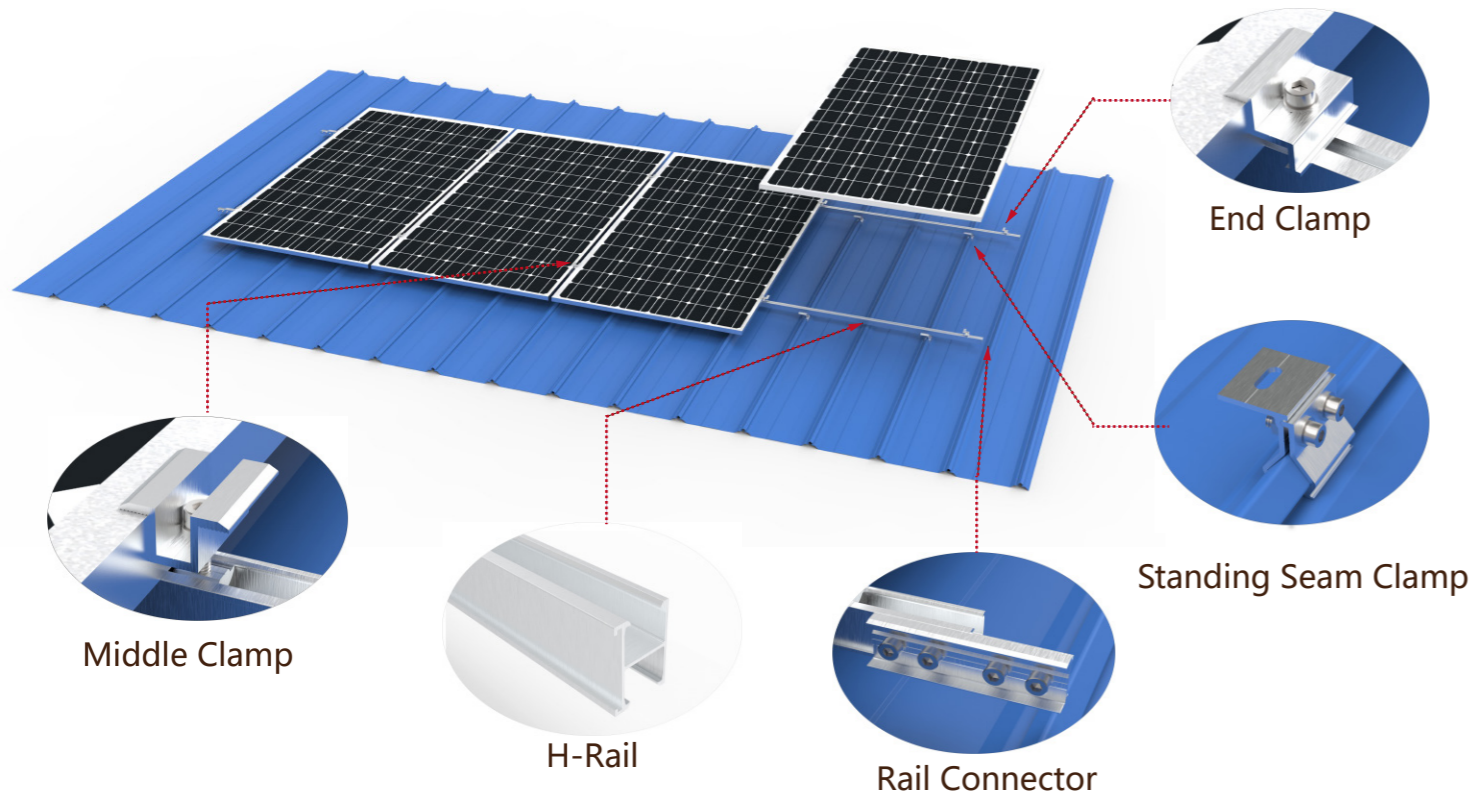
- Steel Carport Mount ————— 27

Other Solar Mounting Series

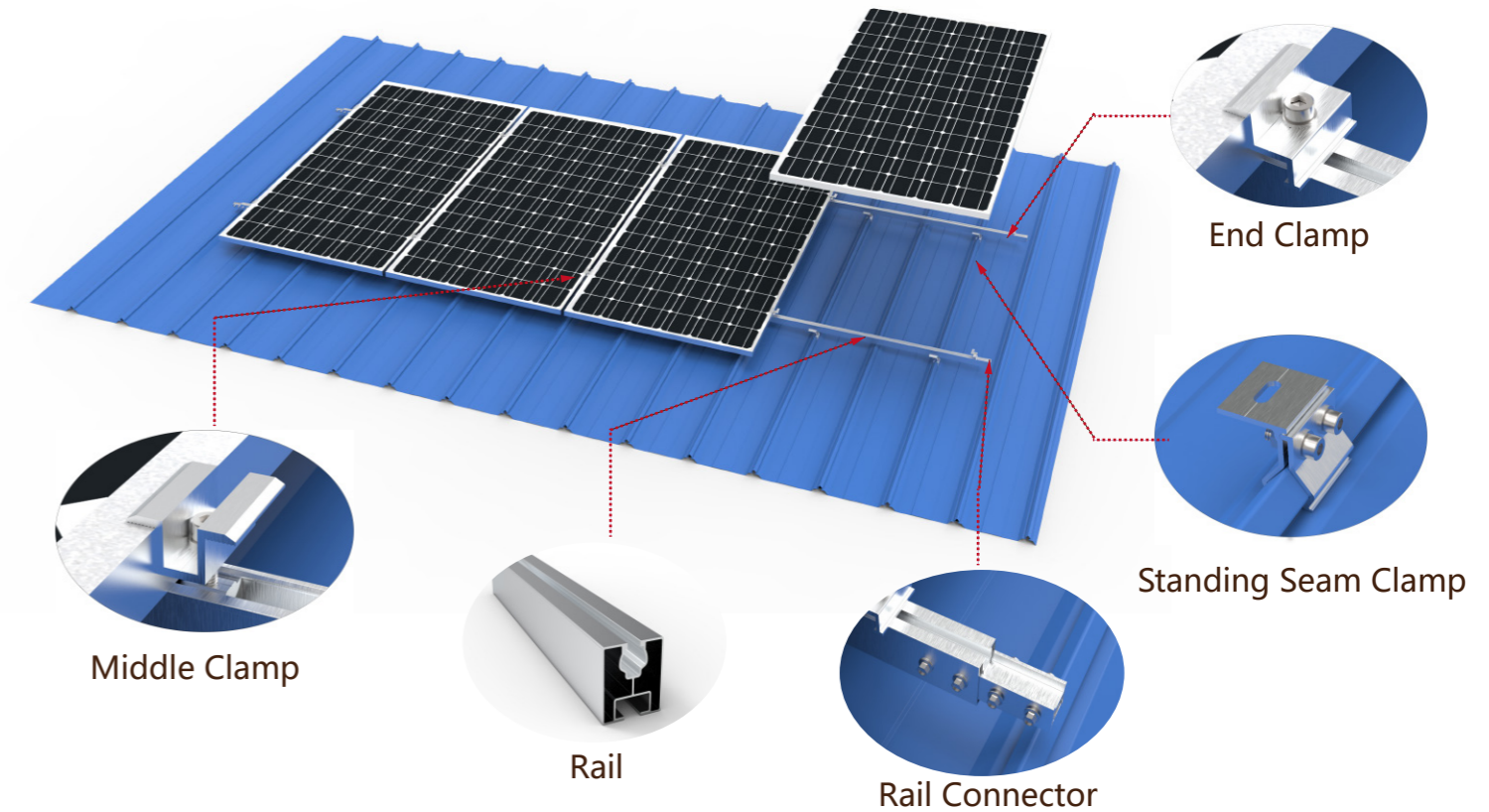
- Balcony Solar Mount ————— 28
- Vertical Solar Mount ————— 29
- Solar Farm Mount ————— 30

Roof Mount System

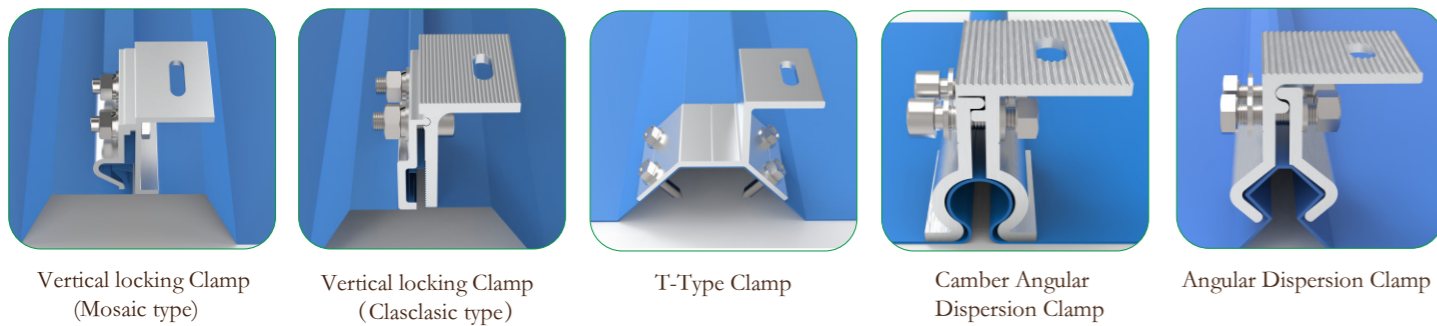
Metal Roof Mounting Series - H-Rail



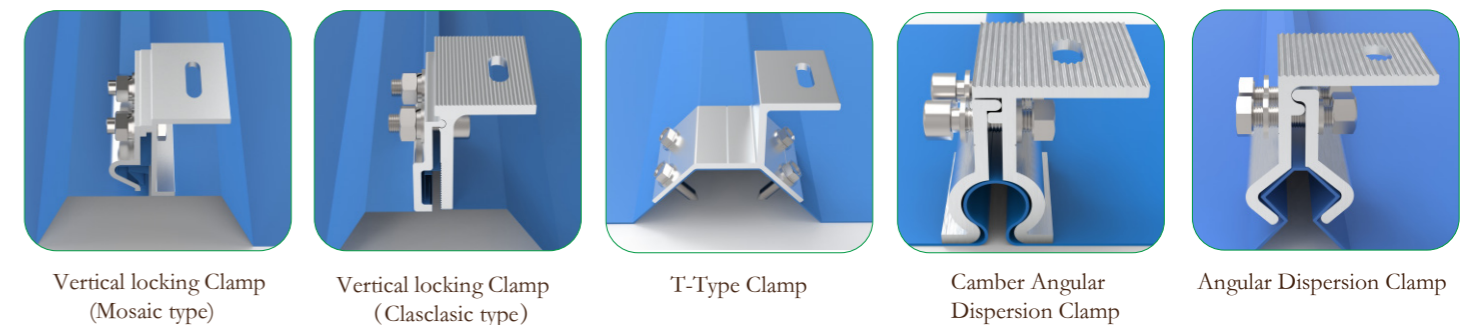
Metal Roof Mounting Series-UNB-Rail



Suitable For Metal Roof Type



Suitable For Metal Roof Type



- Technical Details:
 1. Installation site; Metal Roof.
 2. Module Orientation: : Module Vertical Or Landscape
 3. Clamp Pull-Out Resistance: $\geq 1.5\text{KN}$
 4. Wind load: $\leq 60\text{m/s}$
 5. Snow load: $\leq 1.6\text{KN/m}^2$
 6. Material: Aluminum AL6005-T5 (AA10~AA20)
 7. Surface Treatment: Natural anodized, Black anodized, And other color customizations
 8. Quality Warranty 12 years, Service life of 25 years.

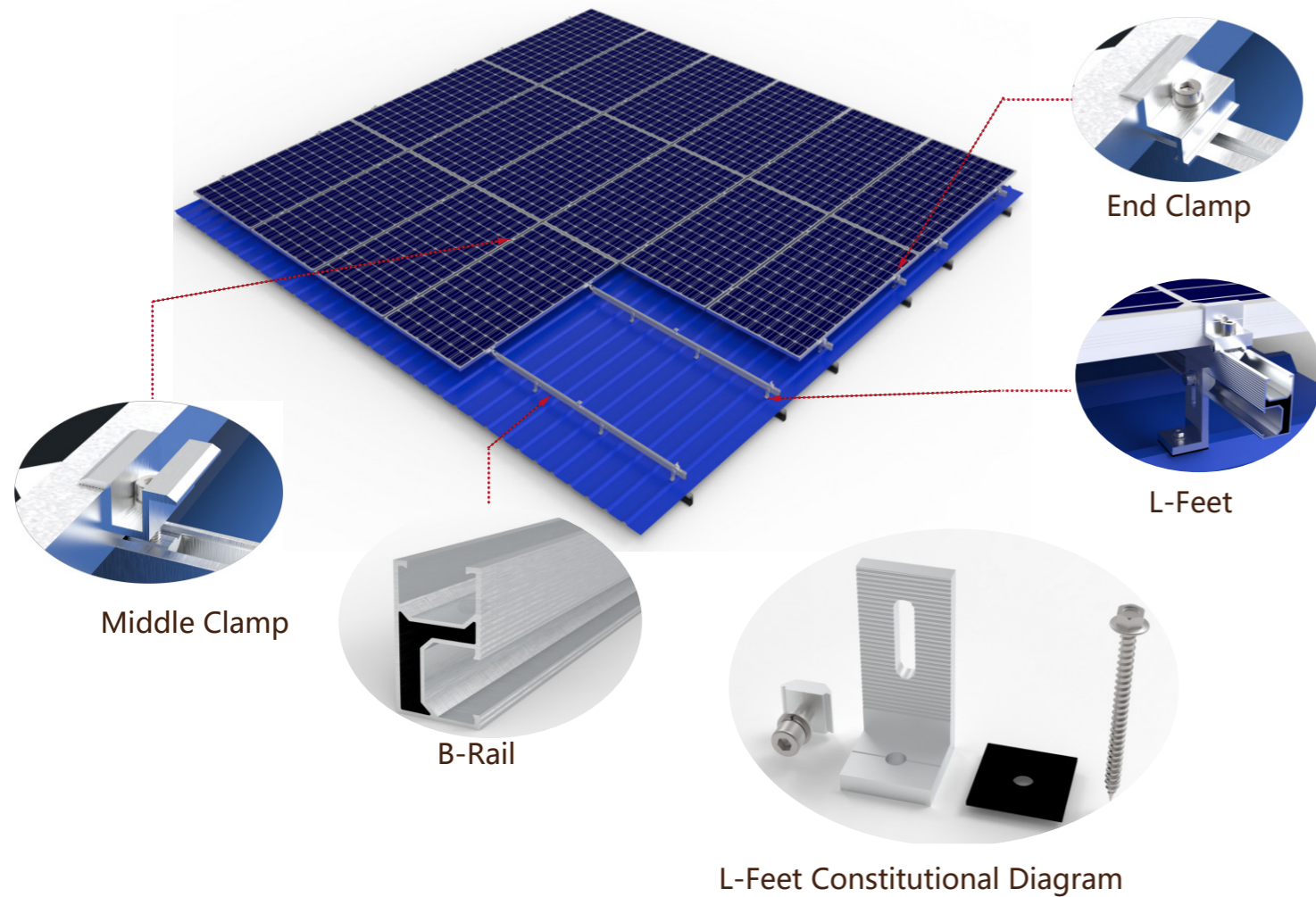
■ Applicable standard: Japan JIS C8955:2017, China GB 50009 2001, Europe EN 1991-1-4:2005, India: IS:875, Australia AS NZ 1170, USA ASCE7 wind load, Malaysia MS 1553:2002 And other national standards.

- Technical Details:
 1. Installation site; Metal Roof.
 2. Module Orientation: : Module Vertical Or Landscape
 3. Clamp Pull-Out Resistance: $\geq 1.5\text{KN}$
 4. Wind load: $\leq 60\text{m/s}$
 5. Snow load: $\leq 1.6\text{KN/m}^2$
 6. Material: Aluminum AL6005-T5 (AA10~AA20)
 7. Surface Treatment: Natural anodized, Black anodized, And other color customizations
 8. Quality Warranty 12 years, Service life of 25 years.

■ Applicable standard: Japan JIS C8955:2017, China GB 50009 2001, Europe EN 1991-1-4:2005, India: IS:875, Australia AS NZ 1170, USA ASCE7 wind load, Malaysia MS 1553:2002 And other national standards.

Roof Mount System

Metal Roof L-Feet Serise



PRODUCT INTRODUCTION

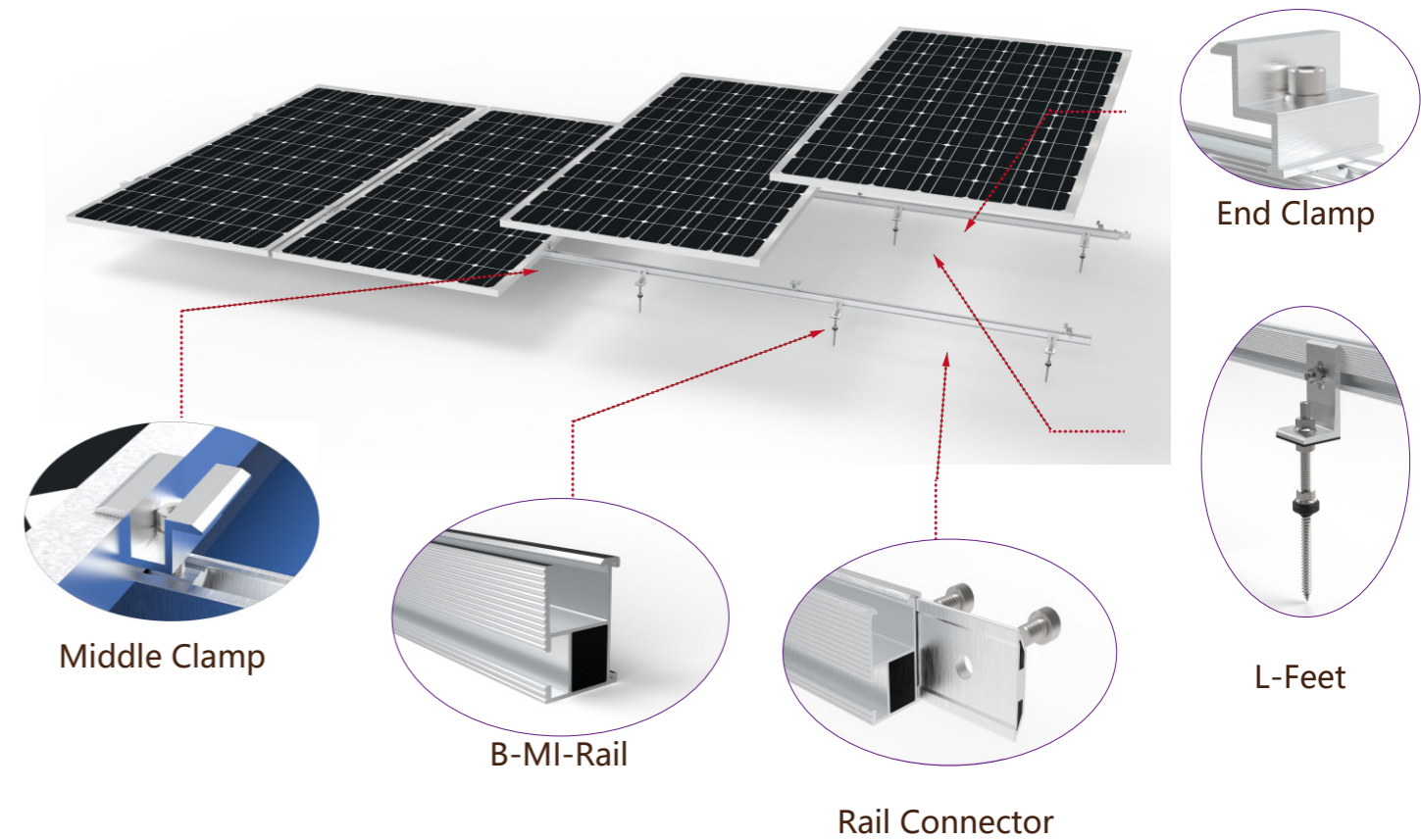
Application scenario: Metal Roof

Metal Foof L-Feet Serise,Material aluminum Al6005-t5, through professional design to make the support parts and accessories perfectly connected, easy to install, safe and reliable.

- Technical Details:
 - 1.Installation site; Metal Roof.
 - 2.Module Orientation: : Module Vertical Or Landscape
 - 3.L-Feet Pull-Out Eesistance: $\geq 1.2\text{KN}$
 - 4.Wind load: $\leq 60\text{m/s}$
 - 5.Snow load: $\leq 1.6\text{KN}/\text{m}^2$
 - 6.Material: Aluminum AL6005-T5 (AA10~AA20)
 - 7.Surface Treatment: Natural anodized、Black anodized、And other color customizations
 - 8.Quality Warranty 12 years, Service life of 25 years.

Applicable standard: Japan JIS C8955:2017、China GB 50009 2001、Europe EN 1991-1-4:2005、India: IS:875、Australia AS NZ 1170、USA ASCE7 wind load、Malaysia MS 1553:2002 And other national standards。

Metal Foof L-Feet Serise



PRODUCT INTRODUCTION

Application scenario: Metal Roof

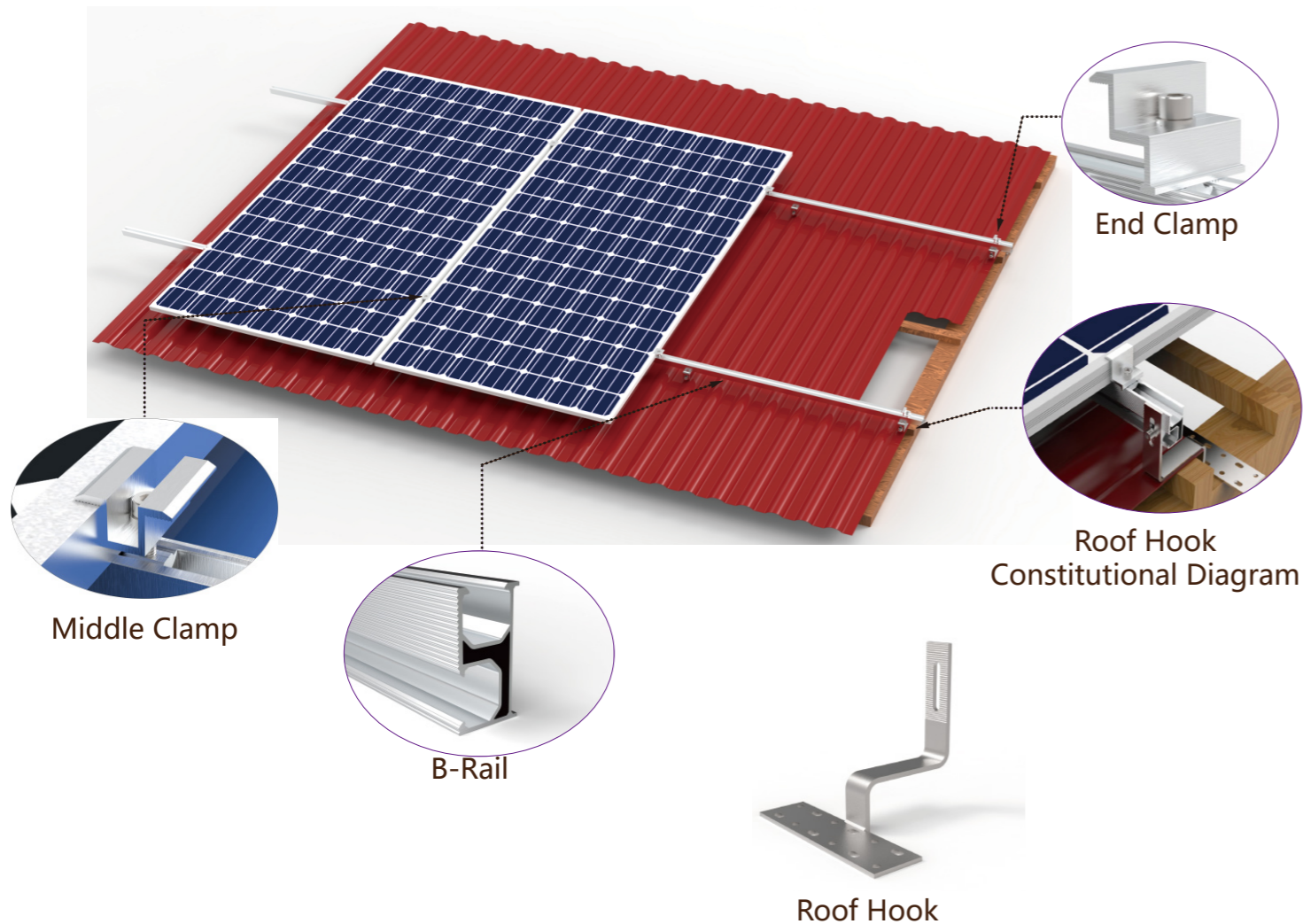
Metal Foof L-Feet Serise,Material aluminum Al6005-t5, through professional design to make the support parts and accessories perfectly connected, easy to install, safe and reliable.

- Technical Details:
 - 1.Installation site; Metal Roof.
 - 2.Module Orientation: : Module Vertical Or Landscape
 - 3.L-Feet Pull-Out Eesistance: $\geq 1.2\text{KN}$
 - 4.Wind load: $\leq 60\text{m/s}$
 - 5.Snow load: $\leq 1.6\text{KN}/\text{m}^2$
 - 6.Material: Aluminum AL6005-T5 (AA10~AA20)
 - 7.Surface Treatment: Natural anodized、Black anodized、And other color customizations
 - 8.Quality Warranty 12 years, Service life of 25 years.

Applicable standard: Japan JIS C8955:2017、China GB 50009 2001、Europe EN 1991-1-4:2005、India: IS:875、Australia AS NZ 1170、USA ASCE7 wind load、Malaysia MS 1553:2002 And other national standards。

Roof Mount System

Roof Hook Series



PRODUCT INTRODUCTION

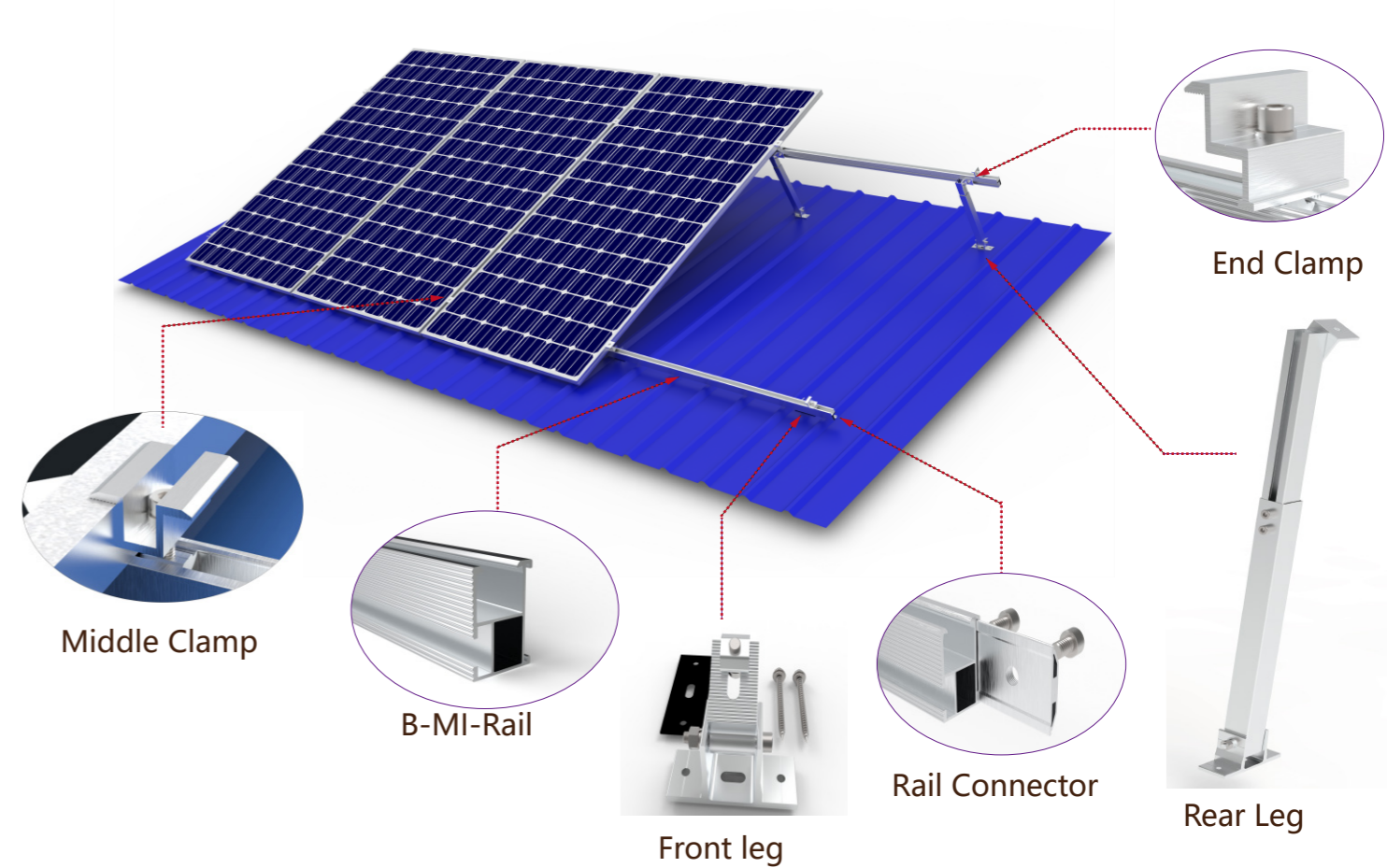
Application scenario: Pitched Tile Roof/Asphalt shingle roofs

Roof Hook Series, Material Stainless steel, aluminum Al6005-t5, through professional design to make the support parts and accessories perfectly connected, easy to install, safe and reliable..

- | | |
|------------------------------------------------------------------------------------------------------------------------------------------------------------------------------------------------------------------------------------------------------------------------------------------------------------------------------------|-----------------------------------------------------------------------------------------------------------------------------------------------------------------------------------------------------------------------------------------------------------------------------------------------------------------------------------------------------------------|
| <ul style="list-style-type: none"> ■ Technical Details: 1. Installation site: Pitched Tile/Asphalt shingle Roof. 2. Module Orientation: : Module Vertical Or Landscape 3. Hook Pull-Out Resistance: $\geq 1.2\text{KN}$ 4. Wind load: $\leq 60\text{m/s}$ | <ul style="list-style-type: none"> 5. Snow load: $\leq 1.6\text{KN}/\text{m}^2$ 6. Material: Stainless steel/Aluminum AL6005-T5 (AA10~AA20) 7. Surface Treatment: Shot Blasting, Natural anodized, Black anodized, And other color customizations. 8. Quality Warranty 12 years, Service life of 25 years. |
|------------------------------------------------------------------------------------------------------------------------------------------------------------------------------------------------------------------------------------------------------------------------------------------------------------------------------------|-----------------------------------------------------------------------------------------------------------------------------------------------------------------------------------------------------------------------------------------------------------------------------------------------------------------------------------------------------------------|

■ Applicable standard: Japan JIS C8955:2017, China GB 50009 2001, Europe EN 1991-1-4:2005, India: IS:875, Australia AS NZ 1170, USA ASCE7 wind load, Malaysia MS 1553:2002 And other national standards.

Adjustable From And Rear Leg Series



PRODUCT INTRODUCTION

Application scenario: Metal/Flat Roof

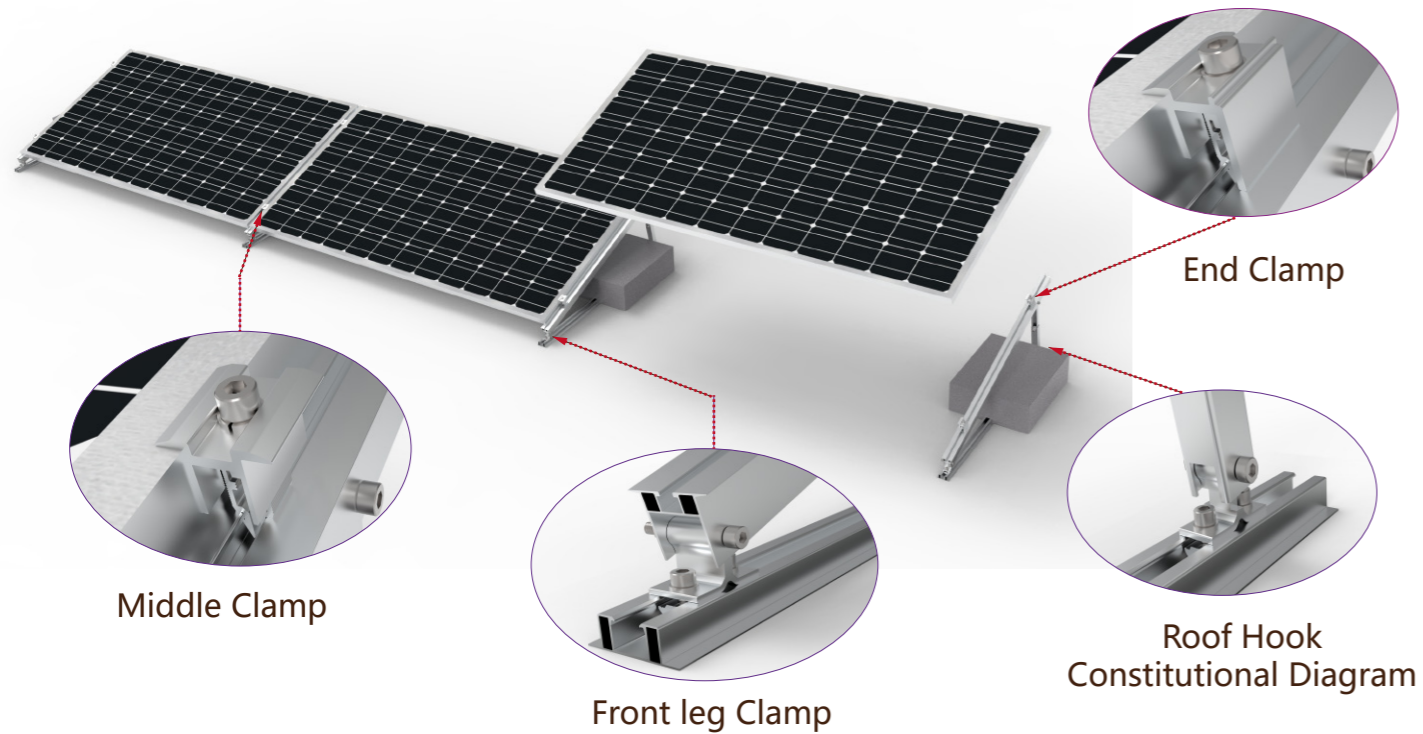
Adjustable From And Rear Leg Series, Material aluminum Al6005-t5, through professional design to make the support parts and accessories perfectly connected, easy to install, safe and reliable.

- | | |
|------------------------------------------------------------------------------------------------------------------------------------------------------------------------------------------------------------------------------------------------------------------------------------------------------------------------------------------------------------------|----------------------------------------------------------------------------------------------------------------------------------------------------------------------------------------------------------------------------------------------------------------------------------------------------------------------------------|
| <ul style="list-style-type: none"> ■ Technical Details: 1. Angle: $5\sim 10^\circ / 10\sim 20^\circ / 15\sim 30^\circ / 20\sim 40^\circ$ 2. Module Orientation: : Module Vertical Or Landscape 3. Pull-Out Resistance: $\geq 1.2\text{KN}$ 4. Wind load: $\leq 60\text{m/s}$ | <ul style="list-style-type: none"> 5. Snow load: $\leq 1.6\text{KN}/\text{m}^2$ 6. Material: Aluminum AL6005-T5 (AA10~AA20) 7. Surface Treatment: Natural anodized, Black anodized, And other color customizations. 8. Quality Warranty 12 years, Service life of 25 years. |
|------------------------------------------------------------------------------------------------------------------------------------------------------------------------------------------------------------------------------------------------------------------------------------------------------------------------------------------------------------------|----------------------------------------------------------------------------------------------------------------------------------------------------------------------------------------------------------------------------------------------------------------------------------------------------------------------------------|

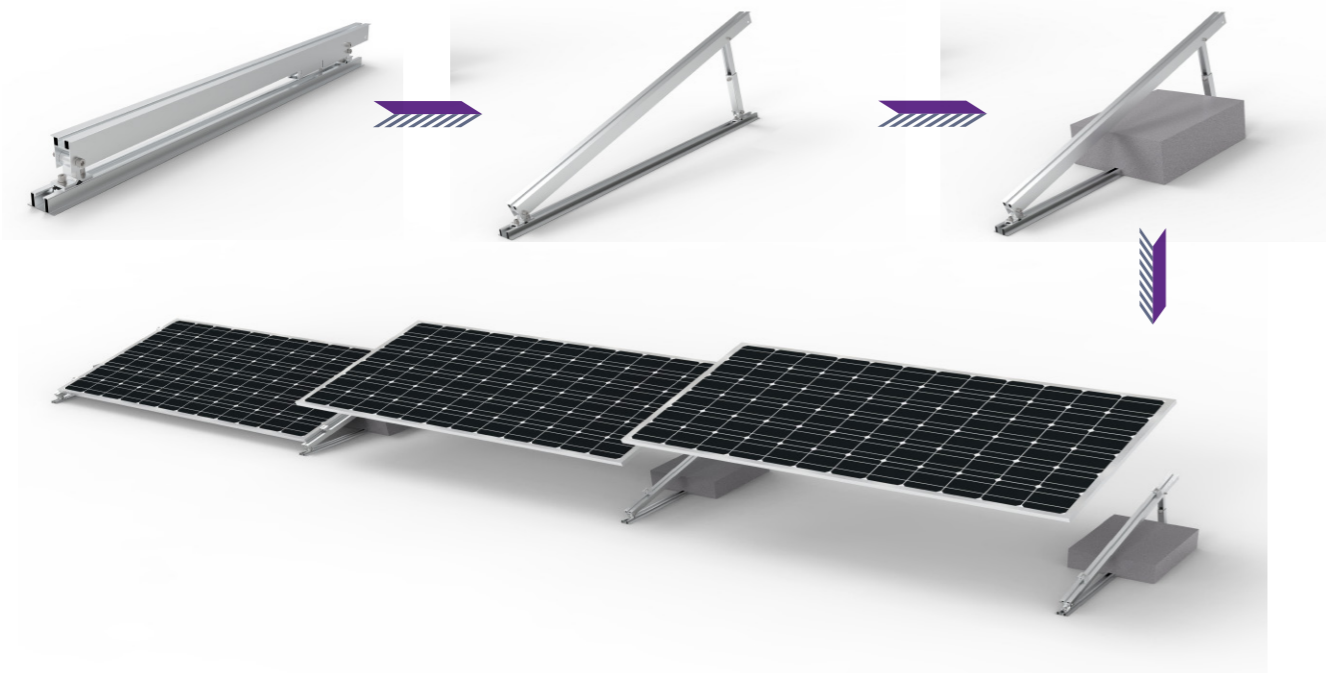
■ Applicable standard: Japan JIS C8955:2017, China GB 50009 2001, Europe EN 1991-1-4:2005, India: IS:875, Australia AS NZ 1170, USA ASCE7 wind load, Malaysia MS 1553:2002 And other national standards.

Roof Mount System

Flat Roof Mounting Series-Ballast Brack



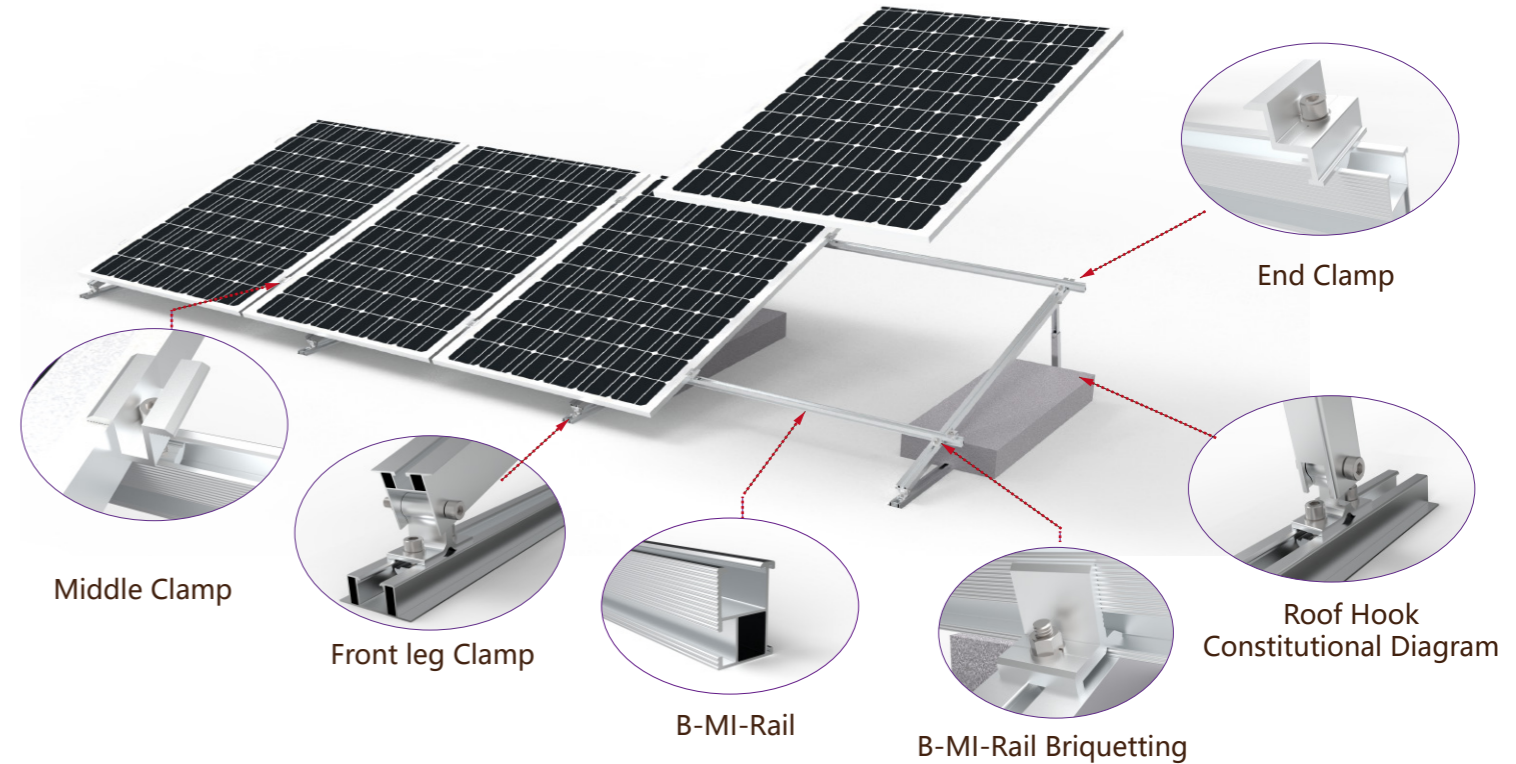
Brief Installation Guide



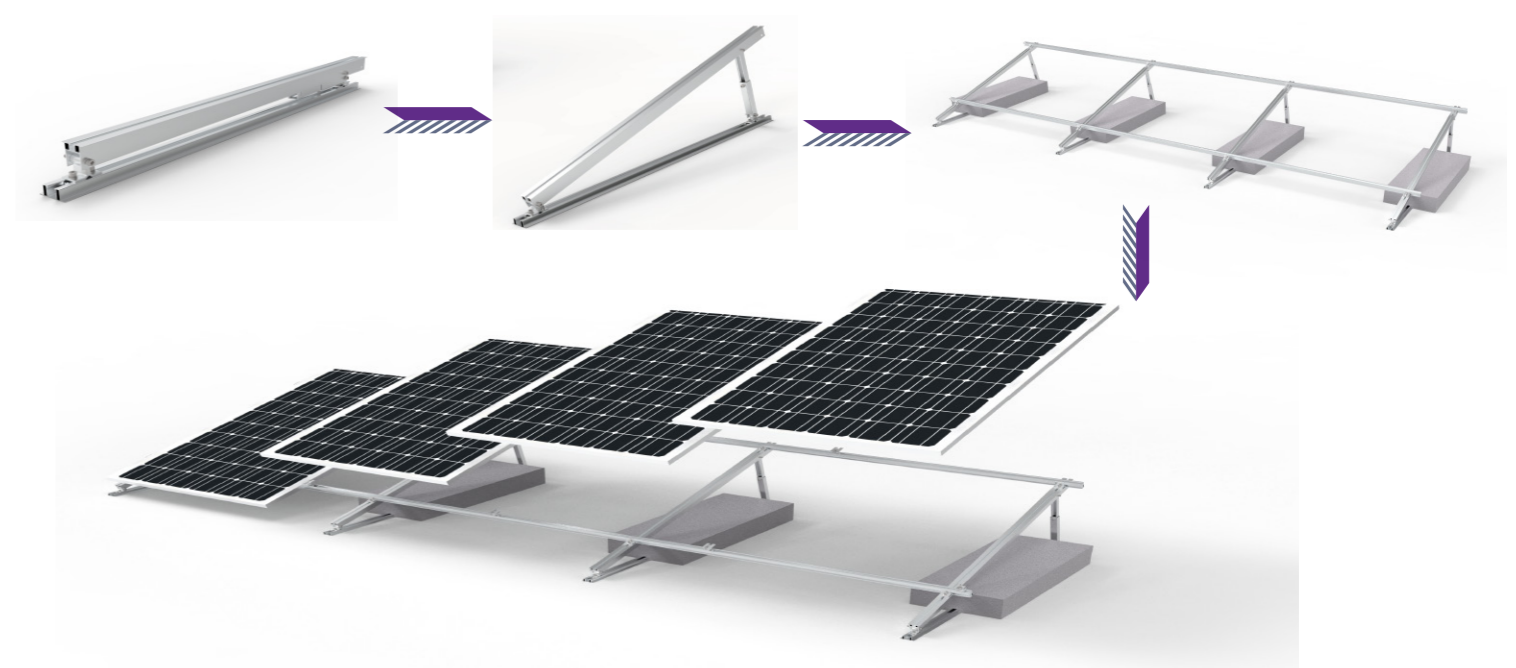
- Technical Details:
 - 1.Installation site; Flat Roof
 - 2.Module Orientation; Landscape
 - 3.Angle; 5~10° / 10~20° / 15~30° / 20~40°。
 - 4.Wind load: ≤60m/s
 - 5.Snow load; ≤1.6KN/ m²
 - 6.Material;Aluminum AL6005-T5 (AA10~AA20)
 - 7.Surface Treatment: Natural anodized、Black anodized、And other color customizations
 - 8.Quality Warranty 12 years, Service life of 25 years.

■ Applicable standard: Japan JIS C8955:2017、China GB 50009 2001、Europe EN 1991-1-4:2005、India: IS:875、Australia AS NZ 1170、USA ASCE7 wind load、Malaysia MS 1553:2002 And other national standards。

Flat Roof Mounting Series-Ballast Brack(Add Rail)



Brief Installation Guide

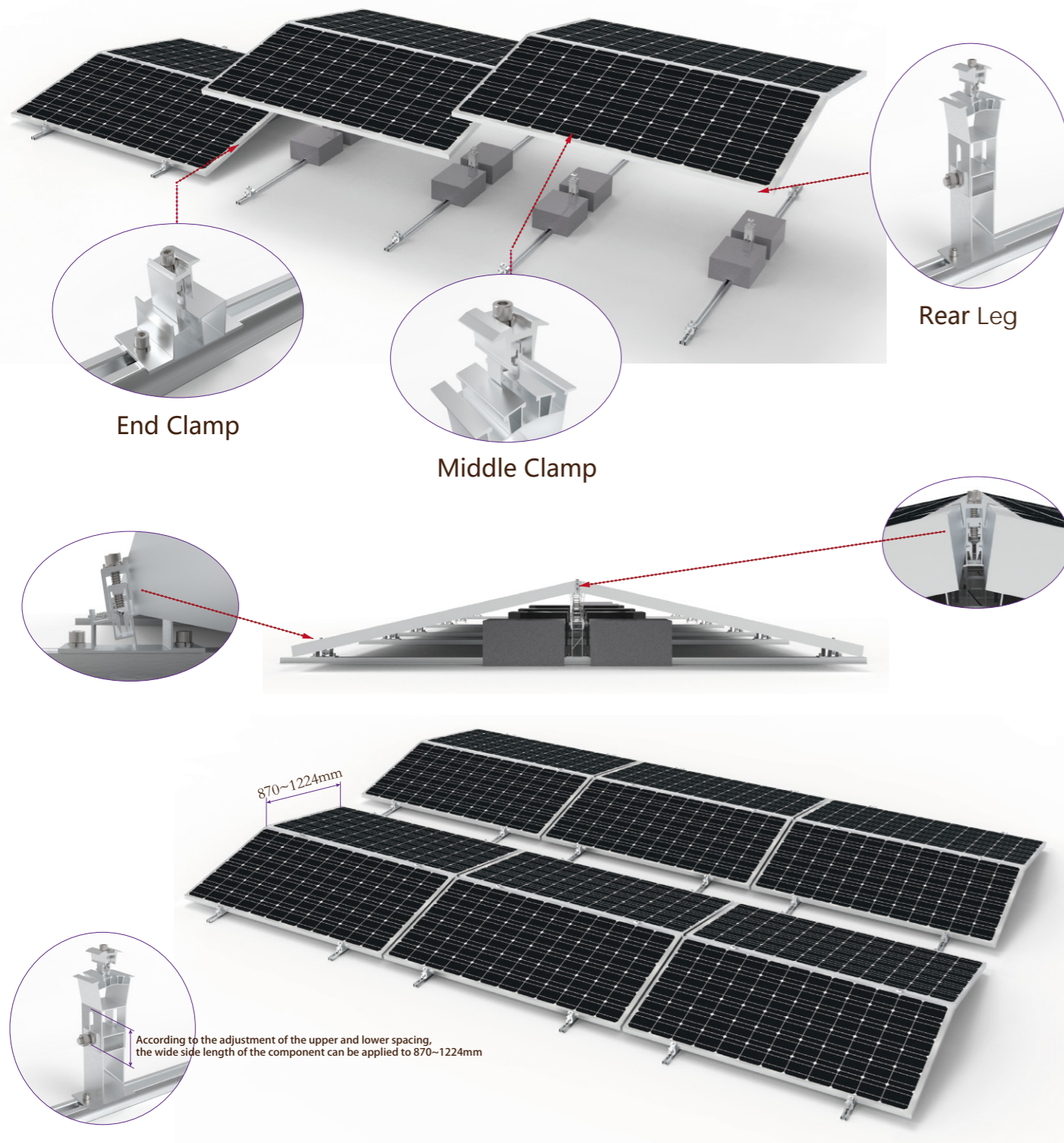


- Technical Details:
 - 1.Installation site; Flat Roof
 - 2.Module Orientation; Module Vertical
 - 3.Angle; 5~10° / 10~20° / 15~30° / 20~40°。
 - 4.Wind load: ≤60m/s
 - 5.Snow load; ≤1.6KN/ m²
 - 6.Material;Aluminum AL6005-T5 (AA10~AA20)
 - 7.Surface Treatment: Natural anodized、Black anodized、And other color customizations
 - 8.Quality Warranty 12 years, Service life of 25 years.

■ Applicable standard: Japan JIS C8955:2017、China GB 50009 2001、Europe EN 1991-1-4:2005、India: IS:875、Australia AS NZ 1170、USA ASCE7 wind load、Malaysia MS 1553:2002 And other national standards。

Roof Mount System

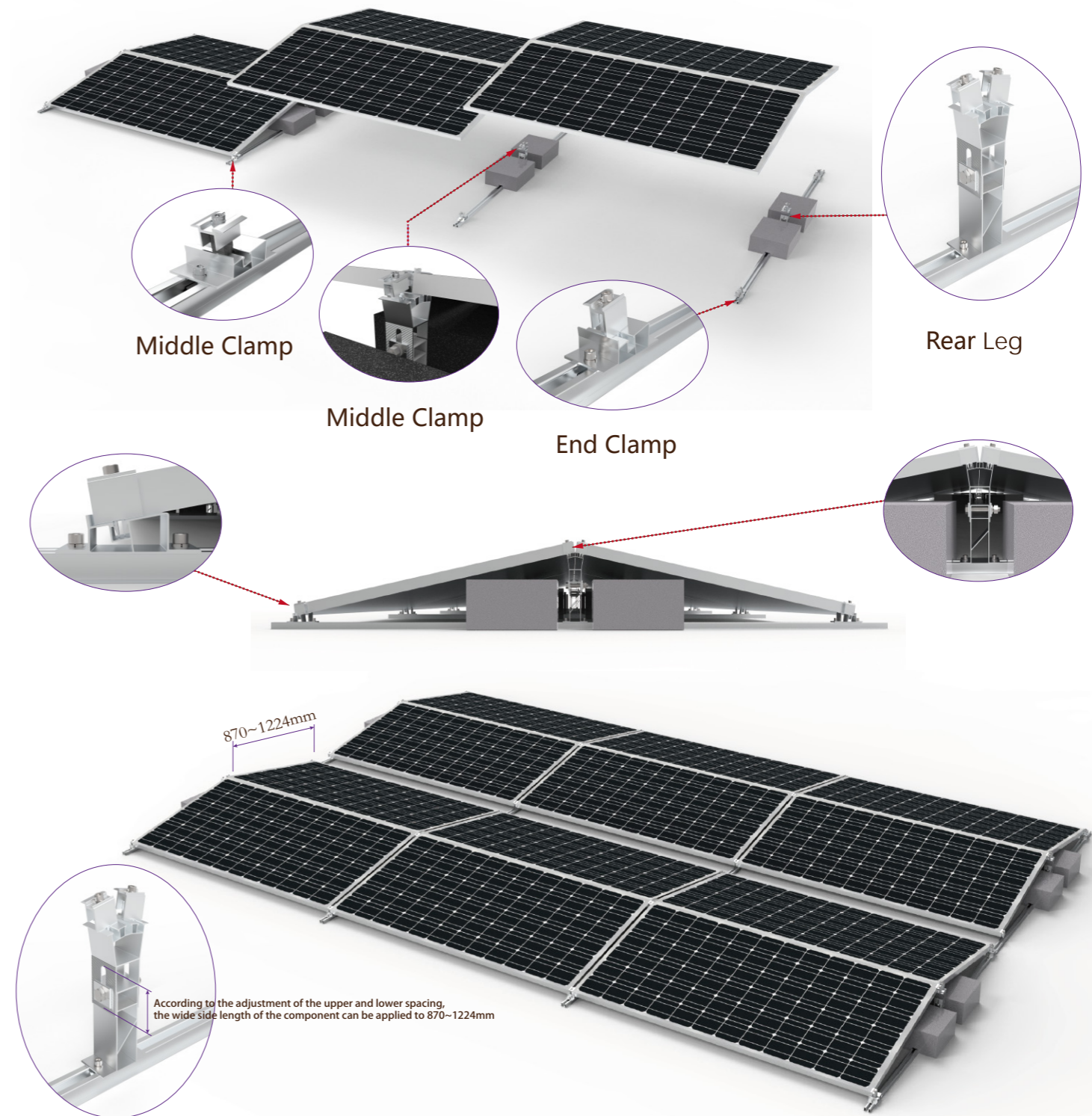
Flat Roof Ballast Brack(FRONT & REAR FOOT)



- Technical Details:
 - 1.Installation site; Flat Roof
 - 2.Module Orientation; Landscape
 - 3.Angle; 10°
 - 4.Wind load; ≤ 60m/s
 - 5.Snow load; ≤ 1.6KN/ m²
 - 6.Material; Aluminum AL6005-T5 (AA10~AA20)
 - 7.Surface Treatment; Natural anodized、 Black anodized、 And other color customizations
 - 8.Quality Warranty 12 years, Service life of 25 years.

■ Applicable standard: Japan JIS C8955:2017、 China GB 50009 2001、 Europe EN 1991-1-4:2005、 India: IS:875、 Australia AS NZ 1170、 USA ASCE7 wind load、 Malaysia MS 1553:2002 And other national standards。

Flat Roof Ballast Brack(FRONT & REAR FOOT)

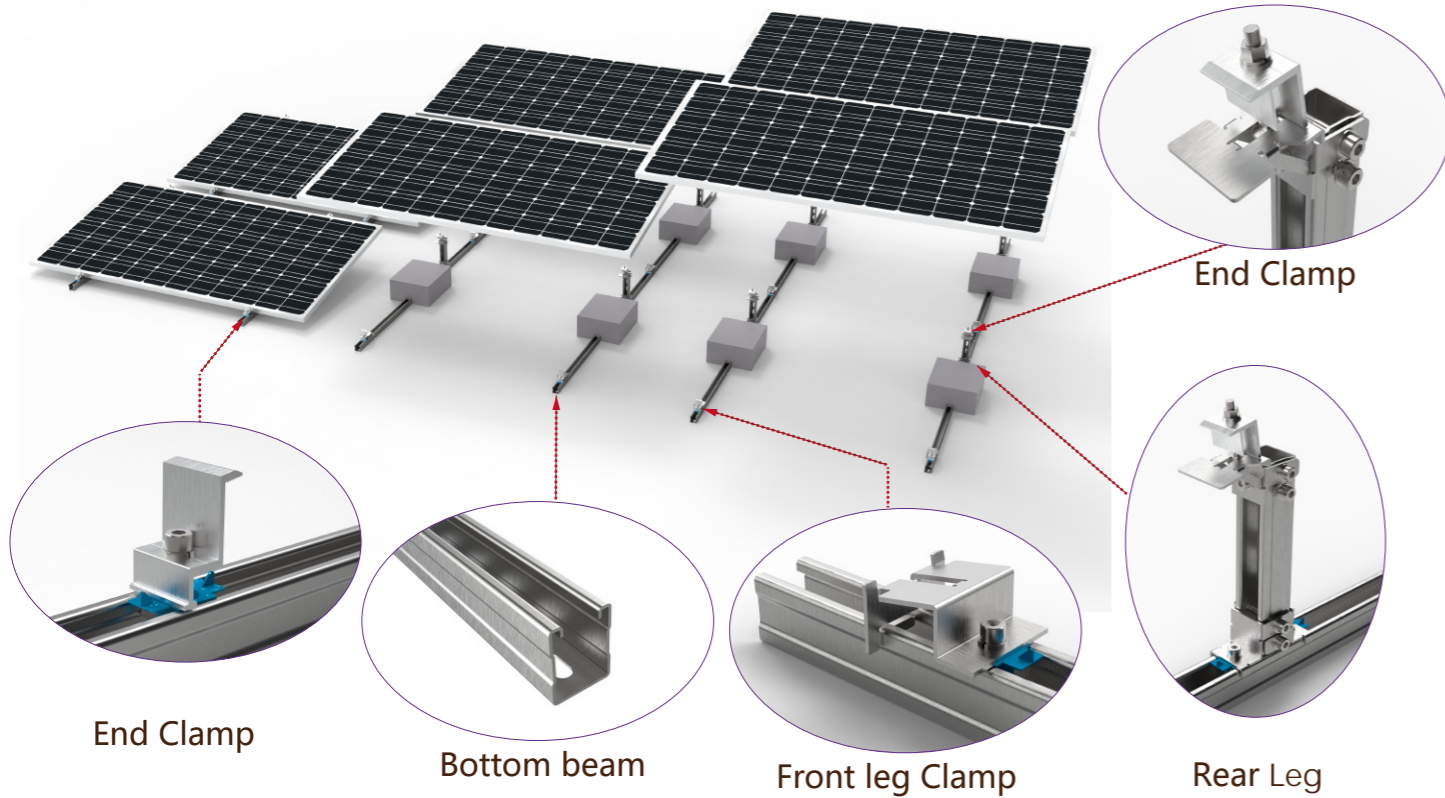


- Technical Details:
 - 1.Installation site; Flat Roof
 - 2.Module Orientation; Landscape
 - 3.Angle; 10°
 - 4.Wind load; ≤ 60m/s
 - 5.Snow load; ≤ 1.6KN/ m²
 - 6.Material; Aluminum AL6005-T5 (AA10~AA20)
 - 7.Surface Treatment; Natural anodized、 Black anodized、 And other color customizations
 - 8.Quality Warranty 12 years, Service life of 25 years.

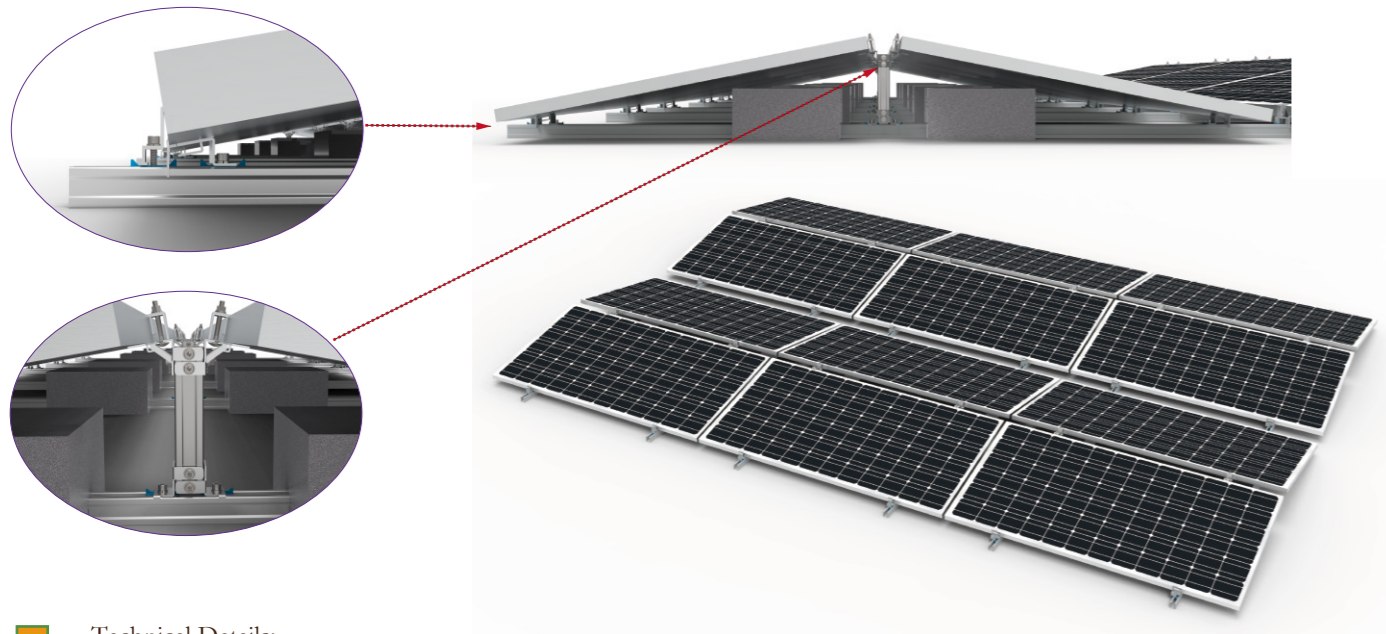
■ Applicable standard: Japan JIS C8955:2017、 China GB 50009 2001、 Europe EN 1991-1-4:2005、 India: IS:875、 Australia AS NZ 1170、 USA ASCE7 wind load、 Malaysia MS 1553:2002 And other national standards。

Roof Mount System

Flat Roof Mounting Series-Steel Ballast Brack



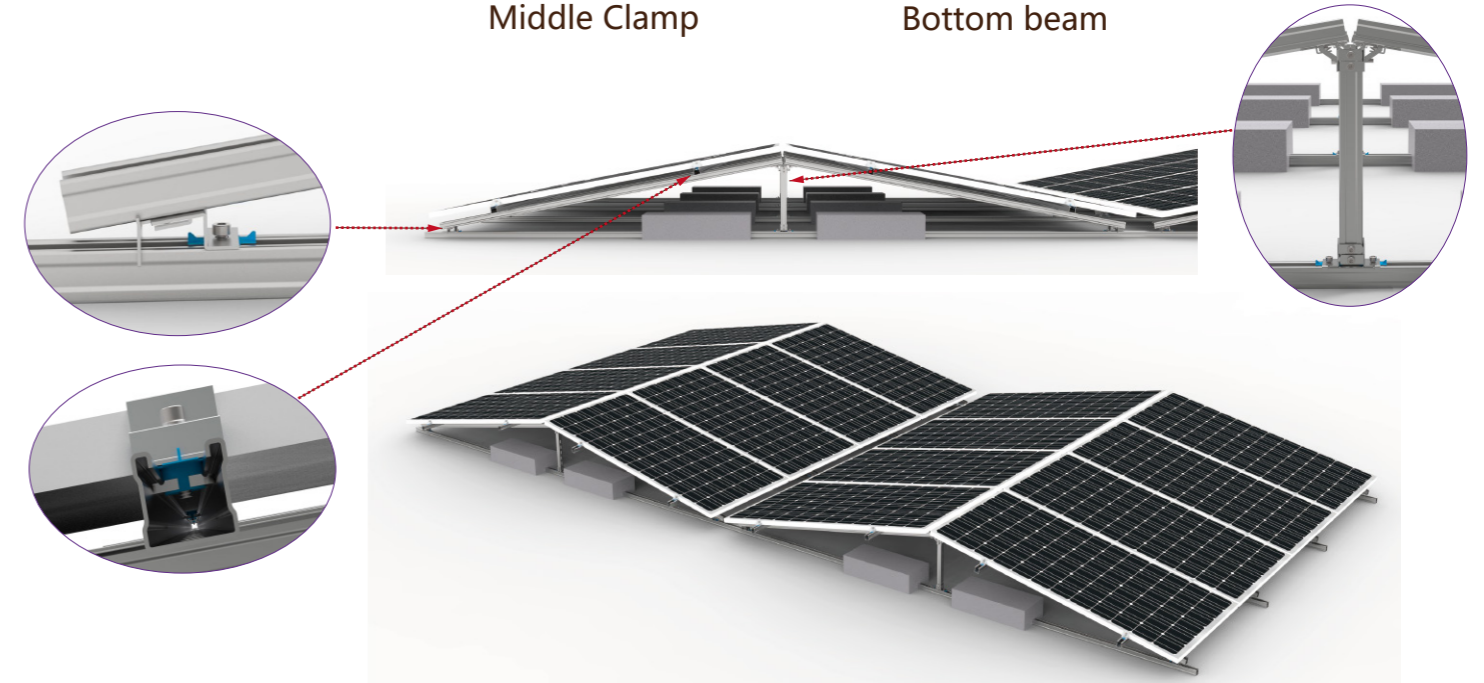
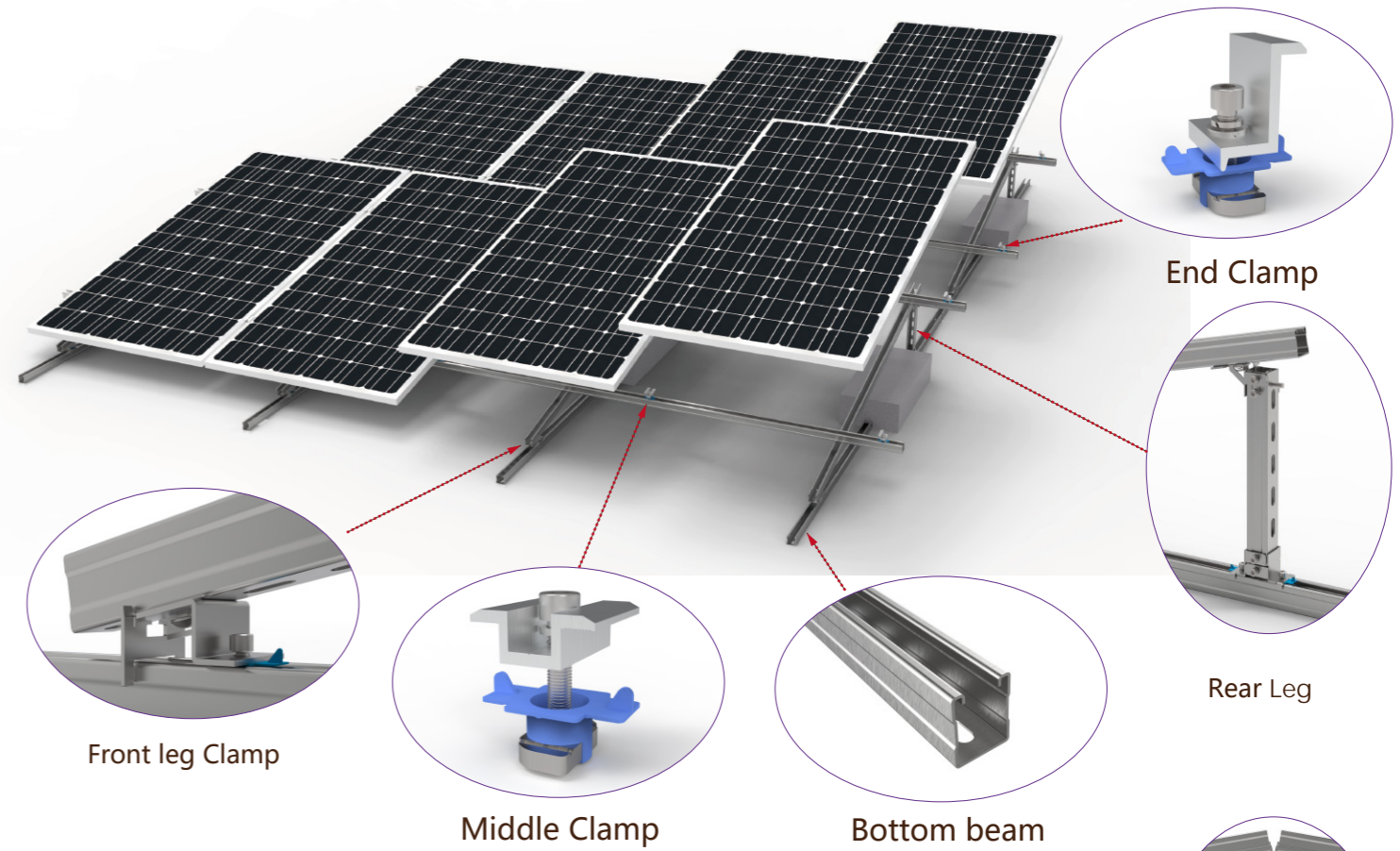
Bidirectional Array



- Technical Details:
 1. Installation site; Flat Roof
 2. Module Orientation; Landscape
 3. Angle; 10°、15°、20°。
 4. Wind load: ≤60m/s
 5. Snow load; ≤1.6KN/ m²
 6. Material; Galvanized Steel/ZMA-Steel
 7. Surface Treatment: Galvanized/ZMA Coating
 8. Quality Warranty 12 years, Service life of 25 years.

Applicable standard: Japan JIS C8955:2017、China GB 50009 2001、Europe EN 1991-1-4:2005、India: IS:875、Australia AS NZ 1170、USA ASCE7 wind load、Malaysia MS 1553:2002 And other national standards.

Flat Roof Mounting Series-Steel Ballast Brack (With Rail)

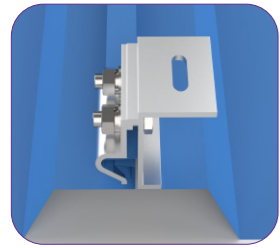


- Technical Details:
 1. Installation site; Flat Roof
 2. Module Orientation; Landscape
 3. Angle; 10°
 4. Wind load; ≤60m/s
 5. Snow load; ≤1.6KN/ m²
 6. Material; Galvanized Steel/ZMA-Steel
 7. Surface Treatment: Galvanized/ZMA Coating
 8. Quality Warranty 12 years, Service life of 25 years.

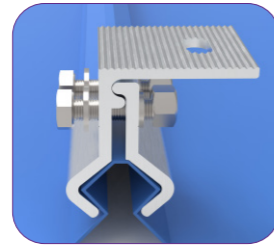
Applicable standard: Japan JIS C8955:2017、China GB 50009 2001、Europe EN 1991-1-4:2005、India: IS:875、Australia AS NZ 1170、USA ASCE7 wind load、Malaysia MS 1553:2002 And other national standards.

Roof Mount System

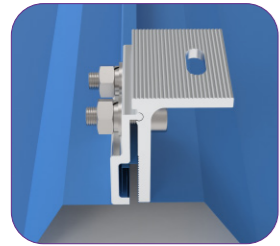
ACCESSORIES - Metal Roof Clamp Series



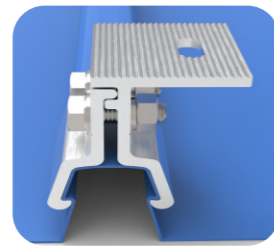
SXRoof-CG-Standing Seam 01
 Material: AL6005-T5
 Surface Treatment : Anodized
 Color: Natural / Black or Customize
 Customize : Customize or Spot Supply



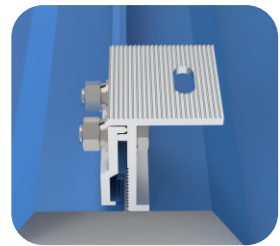
SXRoof-CG-KlipLok 01
 Material: AL6005-T5
 Surface Treatment : Anodized
 Color: Natural / Black or Customize
 Customize : Customize or Spot Supply



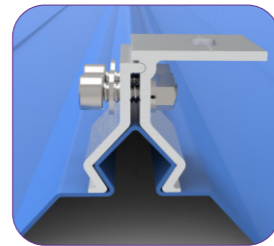
SXRoof-CG-Standing Seam 02
 Material: AL6005-T5
 Surface Treatment : Anodized
 Color: Natural / Black or Customize
 Customize : Customize or Spot Supply



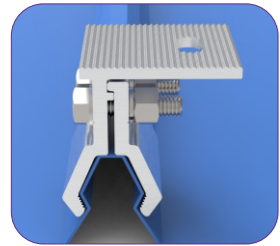
SXRoof-CG-KlipLok 02
 Material: AL6005-T5
 Surface Treatment : Anodized
 Color: Natural / Black or Customize
 Customize : Customize or Spot Supply



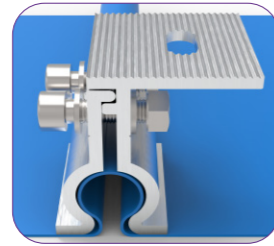
SXRoof-CG-Standing Seam 03
 Material: AL6005-T5
 Surface Treatment : Anodized
 Color: Natural / Black or Customize
 Customize : Customize or Spot Supply



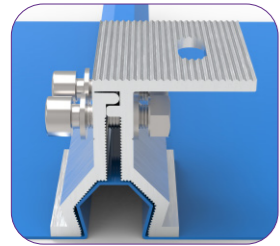
SXRoof-CG-KlipLok 03
 Material: AL6005-T5
 Surface Treatment : Anodized
 Color: Natural / Black or Customize
 Customize : Customize or Spot Supply



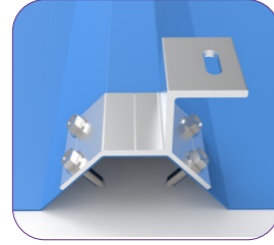
SXRoof-CG-KlipLok 04
 Material: AL6005-T5
 Surface Treatment : Anodized
 Color: Natural / Black or Customize
 Customize : Customize or Spot Supply



SXRoof-CG-Standing Seam01
 Material: AL6005-T5
 Surface Treatment : Anodized
 Color: Natural / Black or Customize
 Customize : Customize or Spot Supply



SXRoof-CG-KlipLok 05
 Material: AL6005-T5
 Surface Treatment : Anodized
 Color: Natural / Black or Customize
 Customize : Customize or Spot Supply



SXRoof-CG-Single Hook01
 Material: AL6005-T5
 Surface Treatment : Anodized
 Color: Natural / Black or Customize
 Customize : Customize or Spot Supply

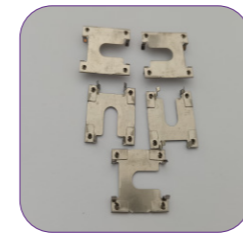


SXRoof-CG-KlipLok 06
 Material: AL6005-T5
 Surface Treatment : Anodized
 Color: Natural / Black or Customize
 Customize : Customize or Spot Supply



SXRoof-CG-KlipLok 07
 Material: AL6005-T5
 Surface Treatment : Anodized
 Color: Natural / Black or Customize
 Customize : Customize or Spot Supply

ACCESSORIES - Grounding Clip And Cable Clip Series



Grounding Clip SX01
 Material:Stainless Steel
 Color:Natural Silver
 Specification:Customize or Spot Supply



Grounding Clip SX08
 Material:Stainless Steel
 Color:Natural Silver
 Specification:Customize or Spot Supply



Cable Clip SXNO2
 Material:Stainless Steel
 Color:Natural Silver
 Specification:Customize or Spot Supply



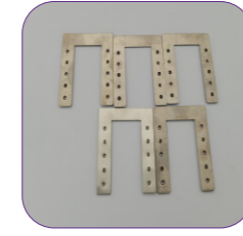
Grounding Clip SX02
 Material:Stainless Steel
 Color:Natural Silver
 Specification:Customize or Spot Supply



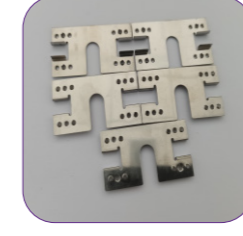
Grounding Clip SX09
 Material:Stainless Steel
 Color:Natural Silver
 Specification:Customize or Spot Supply



Cable Clip SXNO3
 Material:Stainless Steel
 Color:Natural Silver
 Specification:Customize or Spot Supply



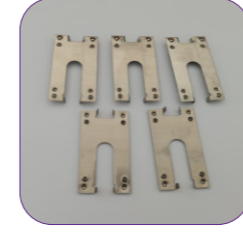
Grounding Clip SX03
 Material:Stainless Steel
 Color:Natural Silver
 Specification:Customize or Spot Supply



Grounding Clip SX10
 Material:Stainless Steel
 Color:Natural Silver
 Specification:Customize or Spot Supply



Cable Clip SXNO4
 Material:Stainless Steel
 Color:Natural Silver
 Specification:Customize or Spot Supply



Grounding Clip SX04
 Material:Stainless Steel
 Color:Natural Silver
 Specification:Customize or Spot Supply



Grounding Clip SX11
 Material:Stainless Steel
 Color:Natural Silver
 Specification:Customize or Spot Supply



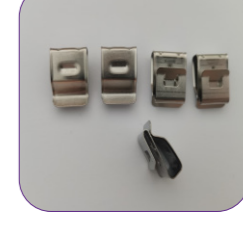
Cable Clip SXNO5
 Material:Stainless Steel
 Color:Natural Silver
 Specification:Customize or Spot Supply



Grounding Clip SX05
 Material:Stainless Steel
 Color:Natural Silver
 Specification:Customize or Spot Supply



Grounding Clip SX12
 Material:Stainless Steel
 Color:Natural Silver
 Specification:Customize or Spot Supply



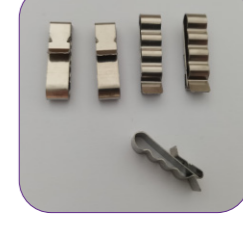
Cable Clip SXNO6
 Material:Stainless Steel
 Color:Natural Silver
 Specification:Customize or Spot Supply



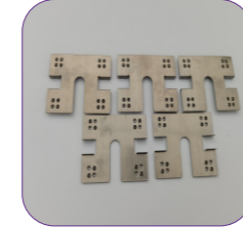
Grounding Clip SX06
 Material:Stainless Steel
 Color:Natural Silver
 Specification:Customize or Spot Supply



Grounding Clip SX13
 Material:Stainless Steel
 Color:Natural Silver
 Specification:Customize or Spot Supply



Cable Clip SXNO7
 Material:Stainless Steel
 Color:Natural Silver
 Specification:Customize or Spot Supply



Grounding Clip SX07
 Material:Stainless Steel
 Color:Natural Silver
 Specification:Customize or Spot Supply



Cable Clip SXNO1
 Material:Stainless Steel
 Color:Natural Silver
 Specification:Customize or Spot Supply



Cable Clip SXNO8
 Material:Stainless Steel
 Color:Natural Silver
 Specification:Customize or Spot Supply

Roof Mount System

ACCESSORIES - Roof Hook Series



SX-1# Fixing Tile Hook
 Material: Stainless Steel SUS304
 Surface Treatment : Shot Blasting
 Color: Natural
 Customize: Customize or Spot Supply



SX-1# Twist Fixing Tile Hook
 Material: Stainless Steel SUS304
 Surface Treatment : Shot Blasting
 Color: Natural
 Customize: Customize or Spot Supply



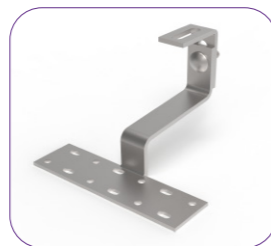
SX-1# Narrow Fixing Tile Hook
 Material: Stainless Steel SUS304
 Surface Treatment : Shot Blasting
 Color: Natural
 Customize: Customize or Spot Supply



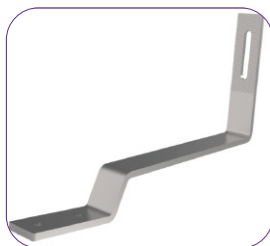
SX-1# Adjusting Fixing Tile Hook
 Material: Stainless Steel SUS304
 Surface Treatment : Shot Blasting
 Color: Natural
 Customize: Customize or Spot Supply



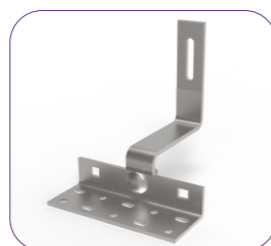
SX-3# Adjusting Fixing Tile Hook
 Material: Stainless Steel SUS304
 Surface Treatment : Shot Blasting
 Color: Natural
 Customize: Customize or Spot Supply



SX-4# Adjusting Fixing Tile Hook
 Material: Stainless Steel SUS304
 Surface Treatment : Shot Blasting
 Color: Natural
 Customize: Customize or Spot Supply



SX-6# Fixing Tile Hook
 Material: Stainless Steel SUS304
 Surface Treatment : Shot Blasting
 Color: Natural
 Customize: Customize or Spot Supply



SX-8# Fixing Tile Hook
 Material: Stainless Steel SUS304
 Surface Treatment : Shot Blasting
 Color: Natural
 Customize: Customize or Spot Supply



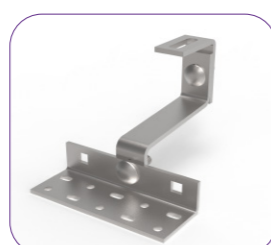
SX-9# Fixing Tile Hook
 Material: Stainless Steel SUS304
 Surface Treatment : Shot Blasting
 Color: Natural
 Customize: Customize or Spot Supply



SX-10# Fixing Tile Hook
 Material: Stainless Steel SUS304
 Surface Treatment : Shot Blasting
 Color: Natural
 Customize: Customize or Spot Supply



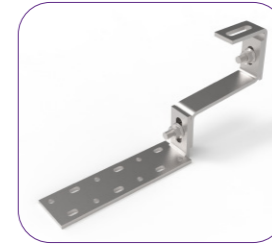
SX-12# Fixing Tile Hook
 Material: Stainless Steel SUS304
 Surface Treatment : Shot Blasting
 Color: Natural
 Customize: Customize or Spot Supply



SX-13# Adjusting Fixing Tile Hook
 Material: Stainless Steel SUS304
 Surface Treatment : Shot Blasting
 Color: Natural
 Customize: Customize or Spot Supply



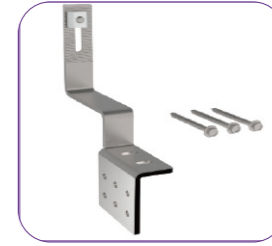
SX-14# Adjusting Fixing Tile Hook
 Material: Stainless Steel SUS304
 Surface Treatment : Shot Blasting
 Color: Natural
 Customize: Customize or Spot Supply



SX-15# Adjusting Fixing Tile Hook
 Material: Stainless Steel SUS304
 Surface Treatment : Shot Blasting
 Color: Natural
 Customize: Customize or Spot Supply



SX-16# Adjusting Fixing Tile Hook
 Material: Stainless Steel SUS304
 Surface Treatment : Shot Blasting
 Color: Natural
 Customize: Customize or Spot Supply



SX-17# Fixing Tile Hook
 Material: Stainless Steel SUS304
 Surface Treatment : Shot Blasting
 Color: Natural
 Customize: Customize or Spot Supply

ACCESSORIES - OTHERS



SX-11# Single Hook
 Material: Stainless Steel SUS304
 Surface Treatment : Shot Blasting
 Color: Natural
 Customize: Customize or Spot Supply



SX-11# Adjusting Single Hook
 Material: Stainless Steel SUS304
 Surface Treatment : Shot Blasting
 Color: Natural
 Customize: Customize or Spot Supply



SX-7# Adjusting Single Hook
 Material: Stainless Steel SUS304
 Surface Treatment : Shot Blasting
 Color: Natural
 Customize: Customize or Spot Supply



Adjusting End Clamp 30-45 Kit
 Material: AL6005-T5
 Surface Treatment : Anodized
 Color: Natural / Black or Customize
 Customize: Customize or Spot Supply



Hanger Bolt & L Feet Kit
 Material: AL6005-T5
 Surface Treatment : Anodized
 Color: Natural / Black or Customize
 Customize: Customize or Spot Supply



Hanger Bolt Kit
 Material: Stainless Steel SUS304
 Surface Treatment : Shot Blasting
 Color: Natural
 Customize: Customize or Spot Supply



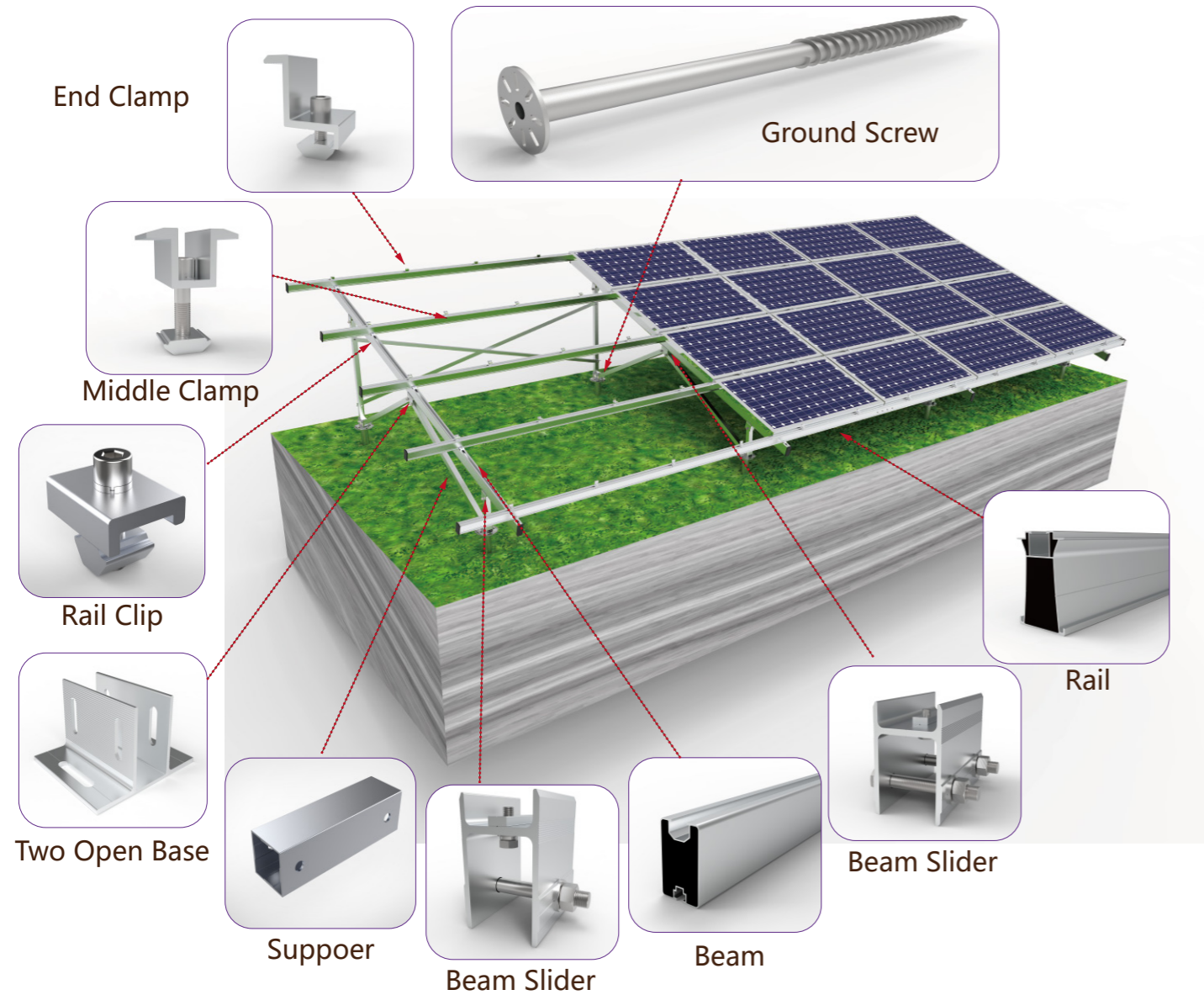
Grounding Lug Kit
 Material: AL6005-T5
 Surface Treatment : Anodized
 Color: Natural / Black or Customize
 Customize: Customize or Spot Supply



FASTENING ELEMENTS
 Material: SUS304/316
 Diameter: Customize
 Length: Customize
 Customize: Customize or Spot Supply

Ground Solar Mounting Series

Aluminum Ground Mount



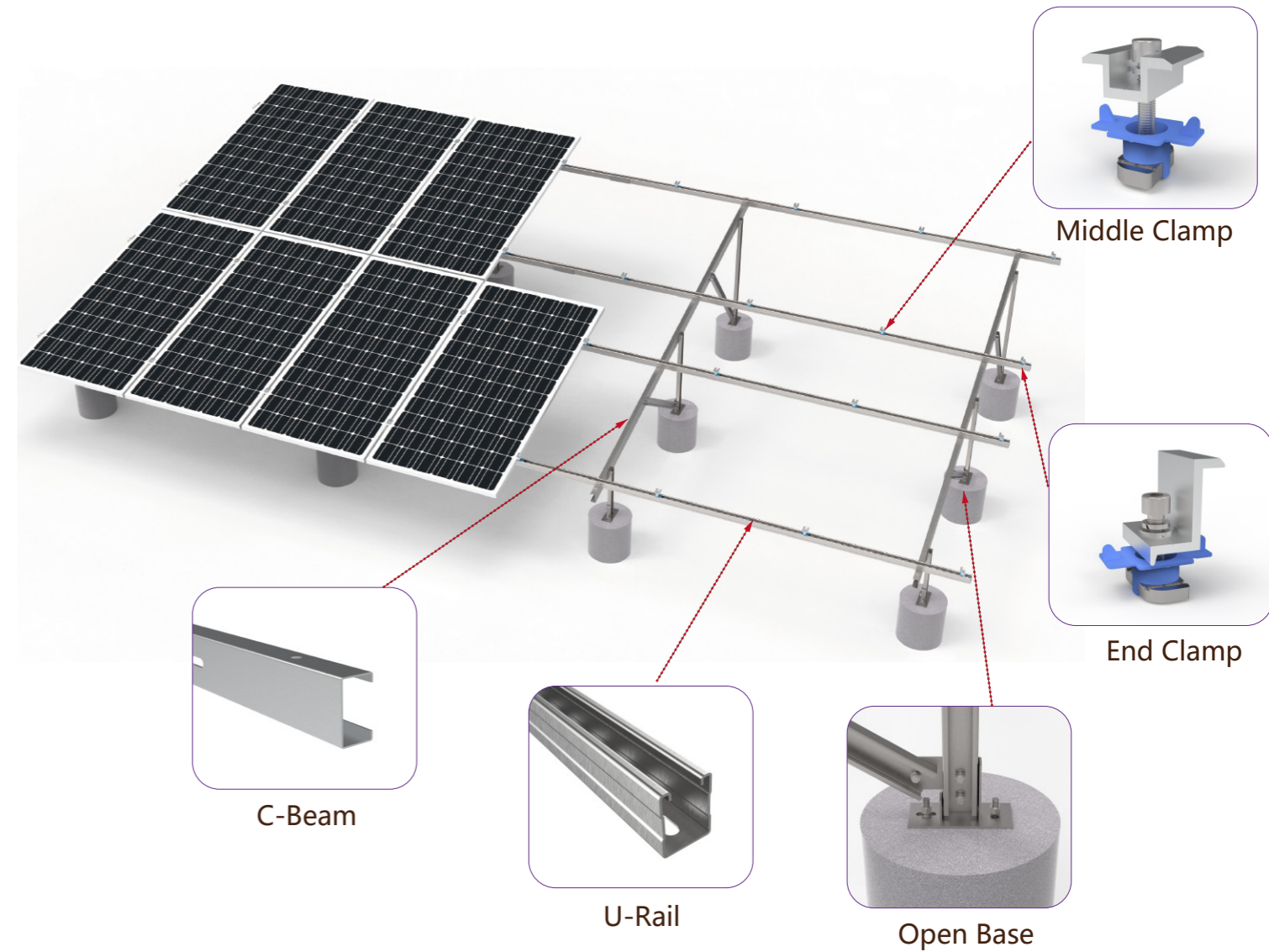
PRODUCT INTRODUCTION

Aluminum Ground Mount,Material aluminum Al6005-t5, through professional design to make the support parts and accessories perfectly connected, easy to install, safe and reliable.

- Technical Details:
 1. Angle: 0~60°
 2. Module Orientation: : Module Vertical Or Landscape
 3. Wind load: ≤ 60m/s
 4. Snow load: ≤ 1.6KN/ m²
 5. Material: Aluminum AL6005-T5 (AA10~AA20)
 6. Surface Treatment: Natural anodized, Black anodized, And other color customizations.
 7. Quality Warranty 12 years, Service life of 25 years.

Applicable standard: Japan JIS C8955:2017、 China GB 50009 2001、 Europe EN 1991-1-4:2005、 India: IS:875、 Australia AS NZ 1170、 USA ASCE7 wind load、 Malaysia MS 1553:2002 And other national standards.

Steel Ground Mount (U+C)



PRODUCT INTRODUCTION

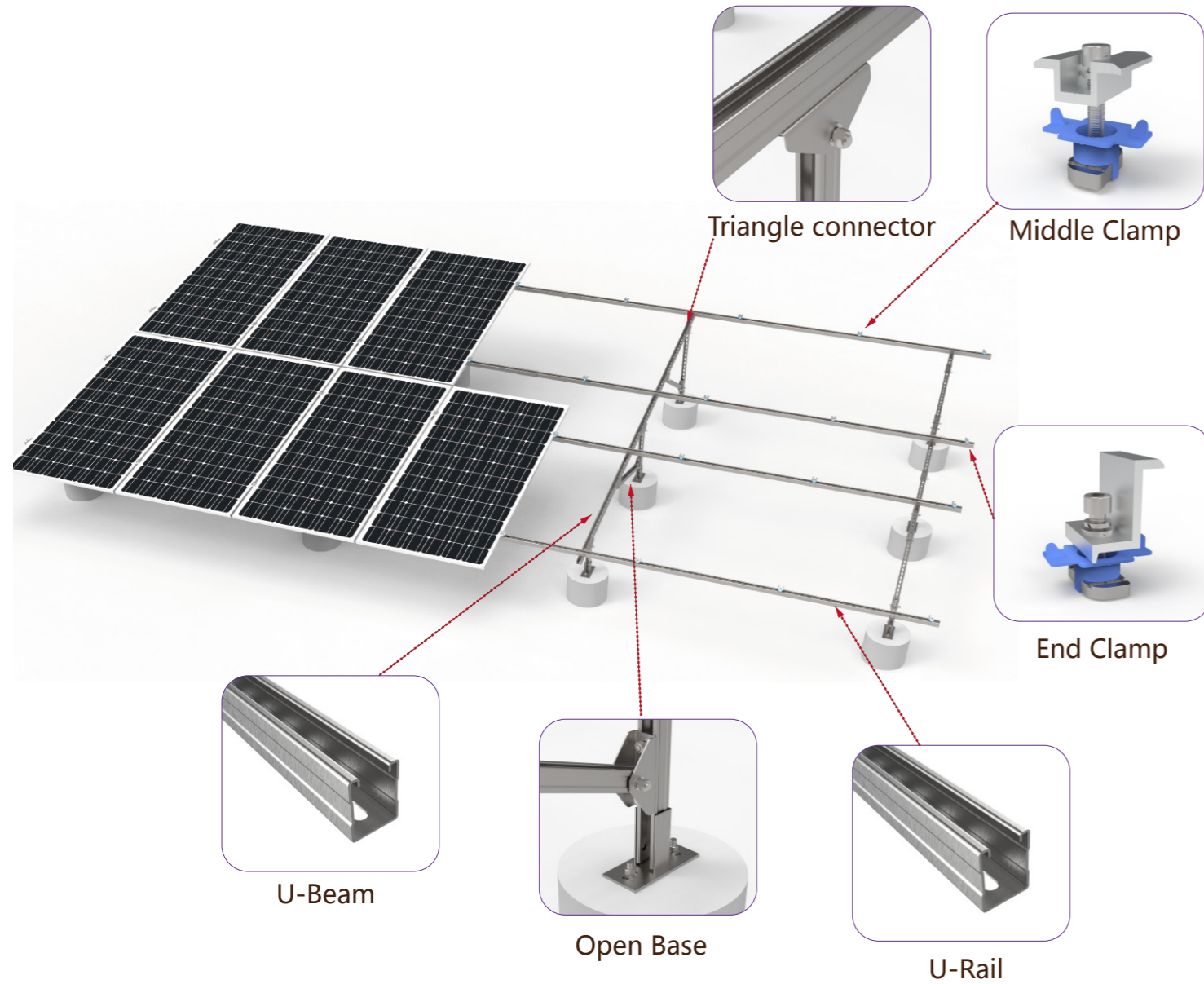
Steel Ground Mount,Material Galvanized steel/ZMA-Steel, through professional design to make the support parts and accessories perfectly connected, easy to install, safe and reliable.

- Technical Details:
 1. Angle: 0~60°
 2. Module Orientation: : Module Vertical Or Landscape
 3. Wind load: ≤ 60m/s
 4. Snow load: ≤ 1.6KN/ m²
 5. Material: Galvanized steel/ZMA-Steel
 6. Surface Treatment: Galvanized/ZMA Coating
 7. Quality Warranty 12 years, Service life of 25 years.

Applicable standard: Japan JIS C8955:2017、 China GB 50009 2001、 Europe EN 1991-1-4:2005、 India: IS:875、 Australia AS NZ 1170、 USA ASCE7 wind load、 Malaysia MS 1553:2002 And other national standards.

Ground Solar Mounting Series

Steel Ground Mount (U)



PRODUCT INTRODUCTION

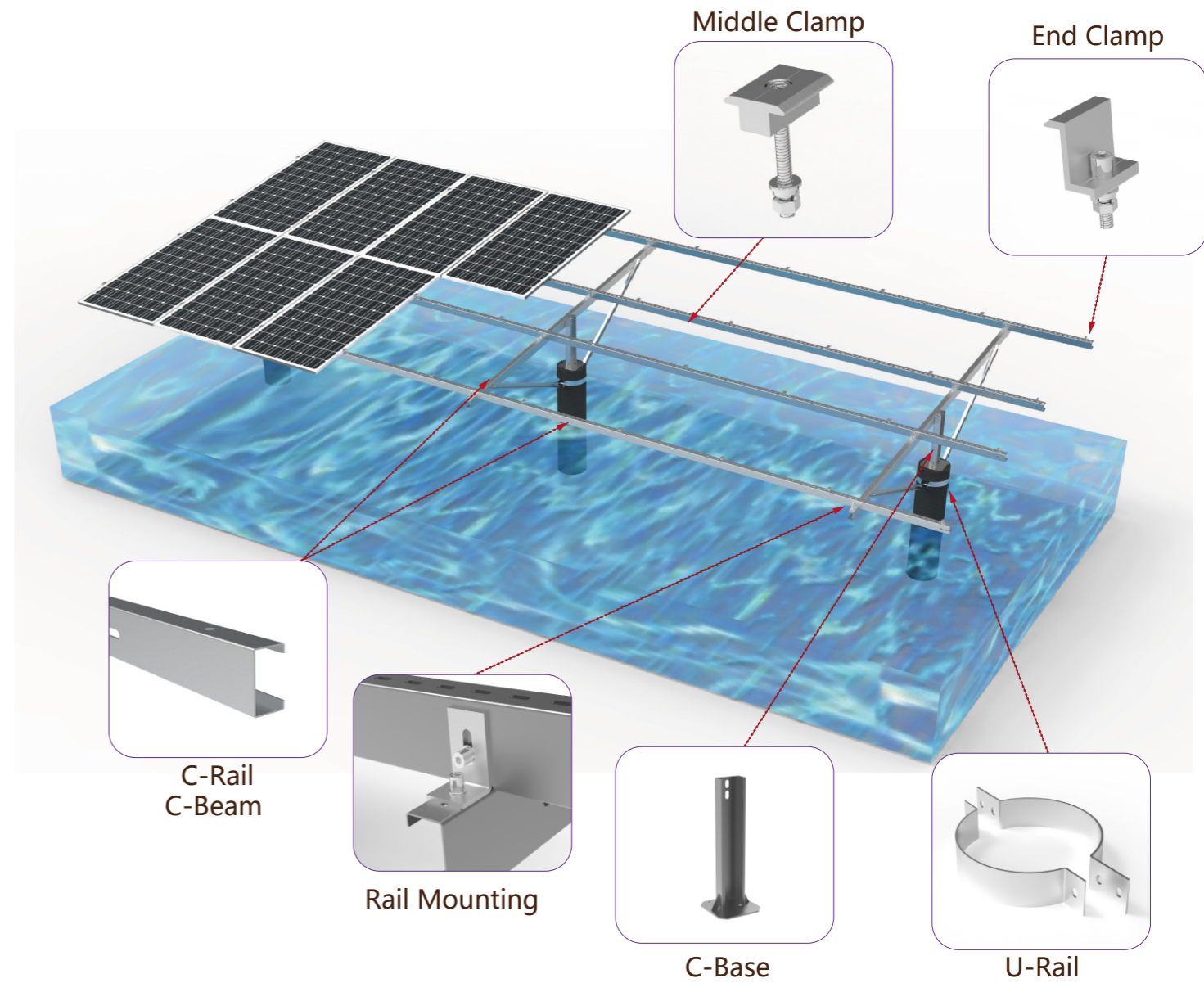
Steel Ground Mount, Material Galvanized steel/ZMA-Steel, through professional design to make the support parts and accessories perfectly connected, easy to install, safe and reliable.

Technical Details:

- | | |
|-------------------------------------------------------|---------------------------------------------------------|
| 1. Angle; 0~60° | 5. Material: Galvanized steel/ZMA-Steel |
| 2. Module Orientation: : Module Vertical Or Landscape | 6. Surface Treatment: Galvanized/ZMA Coating |
| 3. Wind load: ≤ 60m/s | 7. Quality Warranty 12 years, Service life of 25 years. |
| 4. Snow load: ≤ 1.6KN/㎡ | |

Applicable standard: Japan JIS C8955:2017、China GB 50009 2001、Europe EN 1991-1-4:2005、India: IS:875、Australia AS NZ 1170、USA ASCE7 wind load、Malaysia MS 1553:2002 And other national standards.

PHC PILE GROUND MOUNT



PRODUCT INTRODUCTION

PHC Pile Ground Mount, Material Galvanized steel/ZMA-Steel, through professional design to make the support parts and accessories perfectly connected, easy to install, safe and reliable.

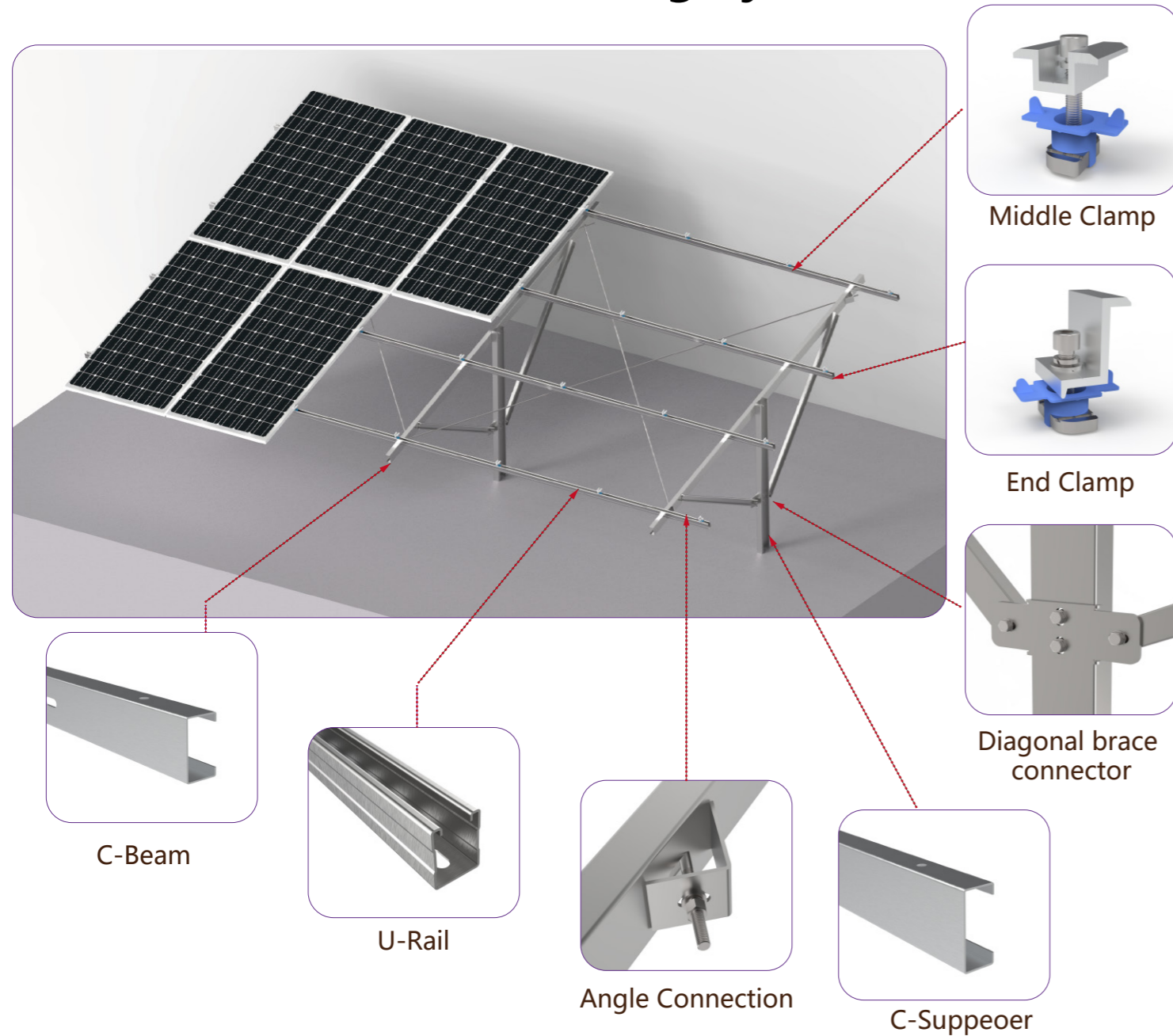
Technical Details:

- | | |
|-------------------------------------------------------|---------------------------------------------------------|
| 1. Angle; 0~60° | 5. Material: Galvanized steel/ZMA-Steel |
| 2. Module Orientation: : Module Vertical Or Landscape | 6. Surface Treatment: Galvanized/ZMA Coating |
| 3. Wind load: ≤ 60m/s | 7. Quality Warranty 12 years, Service life of 25 years. |
| 4. Snow load: ≤ 1.6KN/㎡ | |

Applicable standard: Japan JIS C8955:2017、China GB 50009 2001、Europe EN 1991-1-4:2005、India: IS:875、Australia AS NZ 1170、USA ASCE7 wind load、Malaysia MS 1553:2002 And other national standards.

Ground Solar Mounting Series

Pole Steel Ground Mounting System



PRODUCT INTRODUCTION

Pole Steel Ground Mounting System, Material Galvanized steel/ZMA-Steel, through professional design to support pieces and lighting tile perfect connection, easy installation, safe and reliable.

Technical Details:

- | | |
|-------------------------------------------------------|---------------------------------------------------------|
| 1. Angle; 0~60° . | 5. Material: Galvanized steel/ZMA-Steel |
| 2. Module Orientation: : Module Vertical Or Landscape | 6. Surface Treatment: Galvanized/ZMA Coating |
| 3. Wind load: ≤ 60m/s | 7. Quality Warranty 12 years, Service life of 25 years. |
| 4. Snow load: ≤ 1.6KN/ m ² | |

Applicable standard: Japan JIS C8955:2017、 China GB 50009 2001、 Europe EN 1991-1-4:2005、 India: IS:875、 Australia AS NZ 1170、 USA ASCE7 wind load、 Malaysia MS 1553:2002 And other national standards.

Ground Screw Solar Mounting System



PRODUCT INTRODUCTION

Ground Screw Solar Mounting System, Material Galvanized steel/ZMA-Steel, through professional design to support pieces and lighting tile perfect connection, easy installation, safe and reliable.

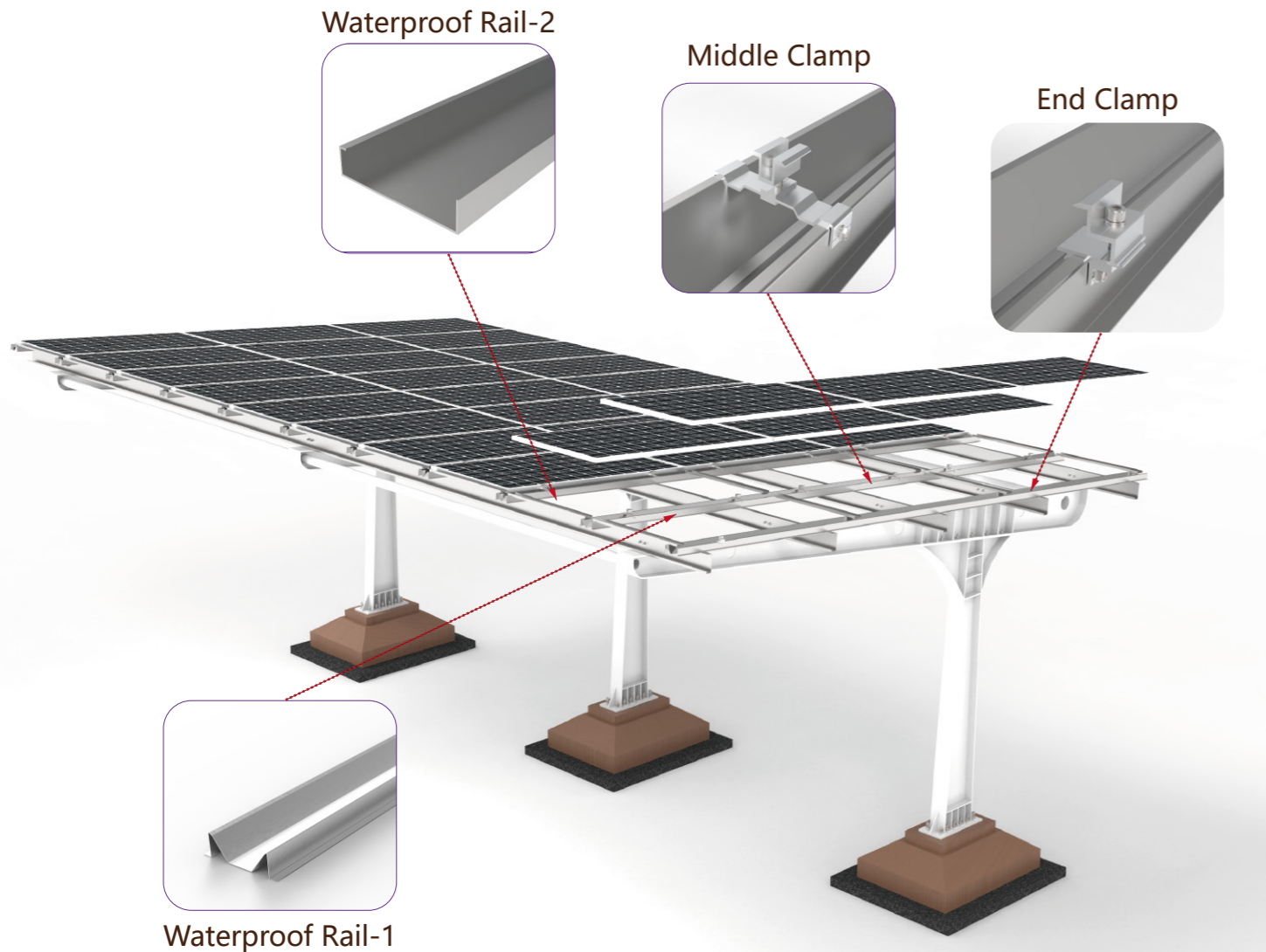
Technical Details:

- | | |
|-------------------------------------------------------|---------------------------------------------------------|
| 1. Angle; 0~60° . | 5. Material: Galvanized steel/ZMA-Steel |
| 2. Module Orientation: : Module Vertical Or Landscape | 6. Surface Treatment: Galvanized/ZMA Coating |
| 3. Wind load: ≤ 60m/s | 7. Quality Warranty 12 years, Service life of 25 years. |
| 4. Snow load: ≤ 1.6KN/ m ² | |

Applicable standard: Japan JIS C8955:2017、 China GB 50009 2001、 Europe EN 1991-1-4:2005、 India: IS:875、 Australia AS NZ 1170、 USA ASCE7 wind load、 Malaysia MS 1553:2002 And other national standards.

SOLAR CARPORT SYSTEM

Single Cantilever Carport



PRODUCT INTRODUCTION

Single Cantilever Carport, Material Galvanized steel/ZMA-Steel, through professional design to make the support parts and accessories perfectly connected, easy to install, safe and reliable.

Technical Details:

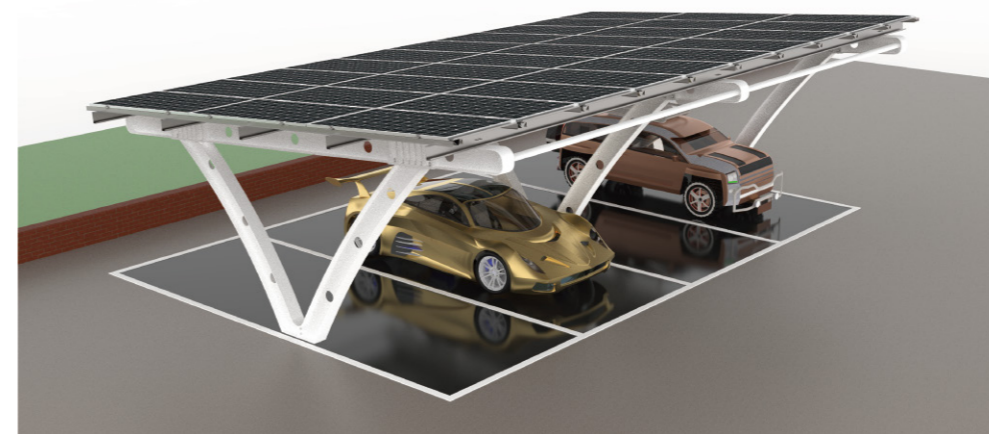
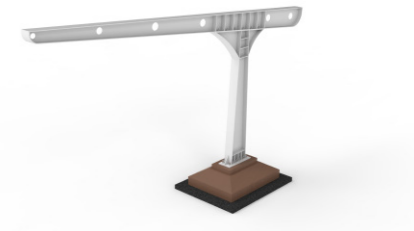
- | | |
|-------------------------------------------------------|---------------------------------------------------------|
| 1. Angle: 0~15° | 5. Material: Galvanized steel/ZMA-Steel |
| 2. Module Orientation: : Module Vertical Or Landscape | 6. Surface Treatment: Galvanized/ZMA Coating |
| 3. Wind load: $\leq 60\text{m/s}$ | 7. Quality Warranty 12 years, Service life of 25 years. |
| 4. Snow load: $\leq 1.6\text{KN/m}^2$ | |

Applicable standard: Japan JIS C8955:2017、China GB 50009 2001、Europe EN 1991-1-4:2005、India: IS:875、Australia AS NZ 1170、USA ASCE7 wind load、Malaysia MS 1553:2002 And other national standards.

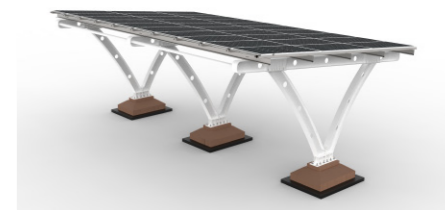
Single Cantilever Carport



Front Solar Carport Effect Picture



Front Solar Carport Effect Picture

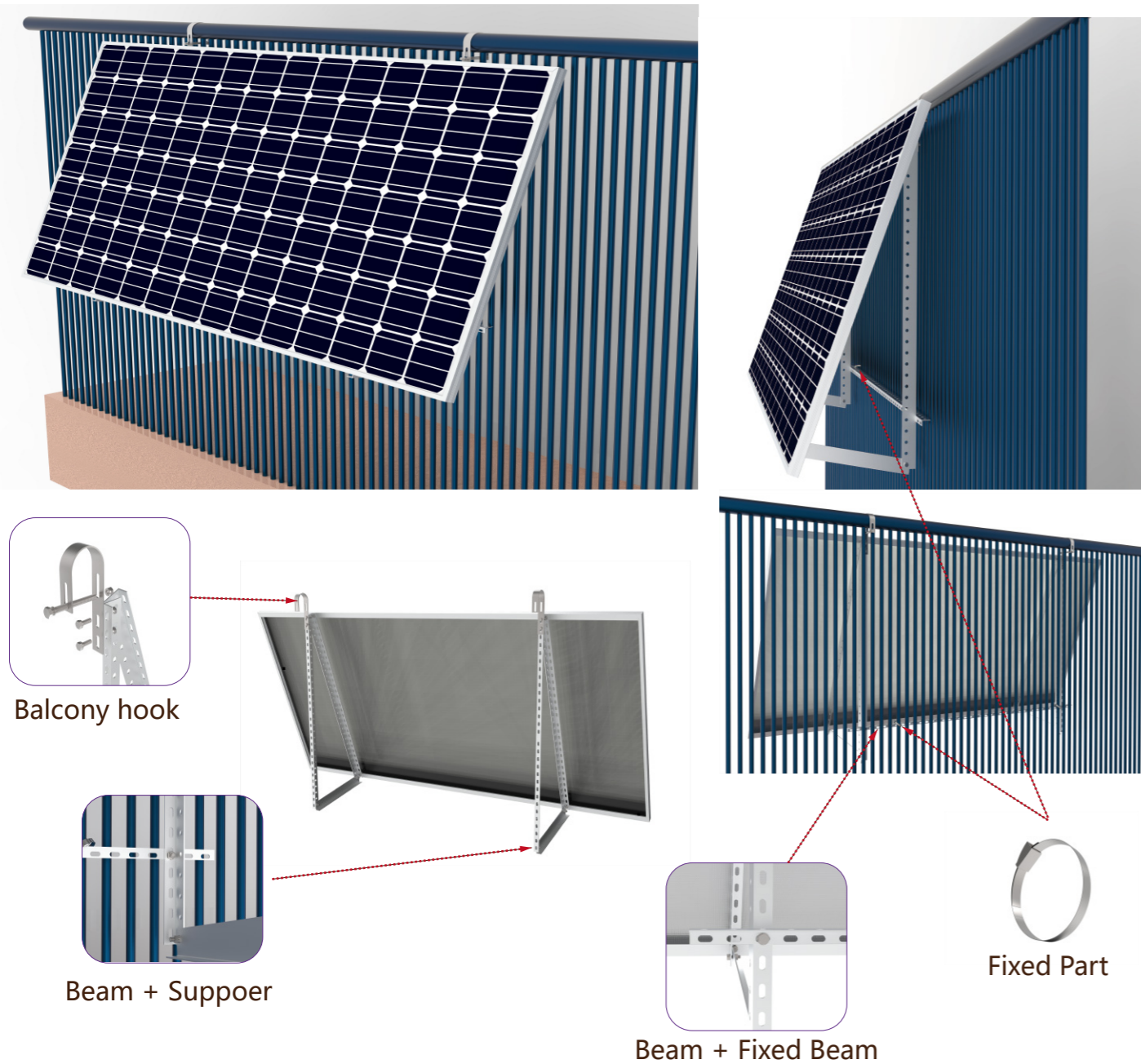


Arc Single Column Solar Carport Effect Picture



OTHERS Solar Mounting Series

Balcony Solar Mount



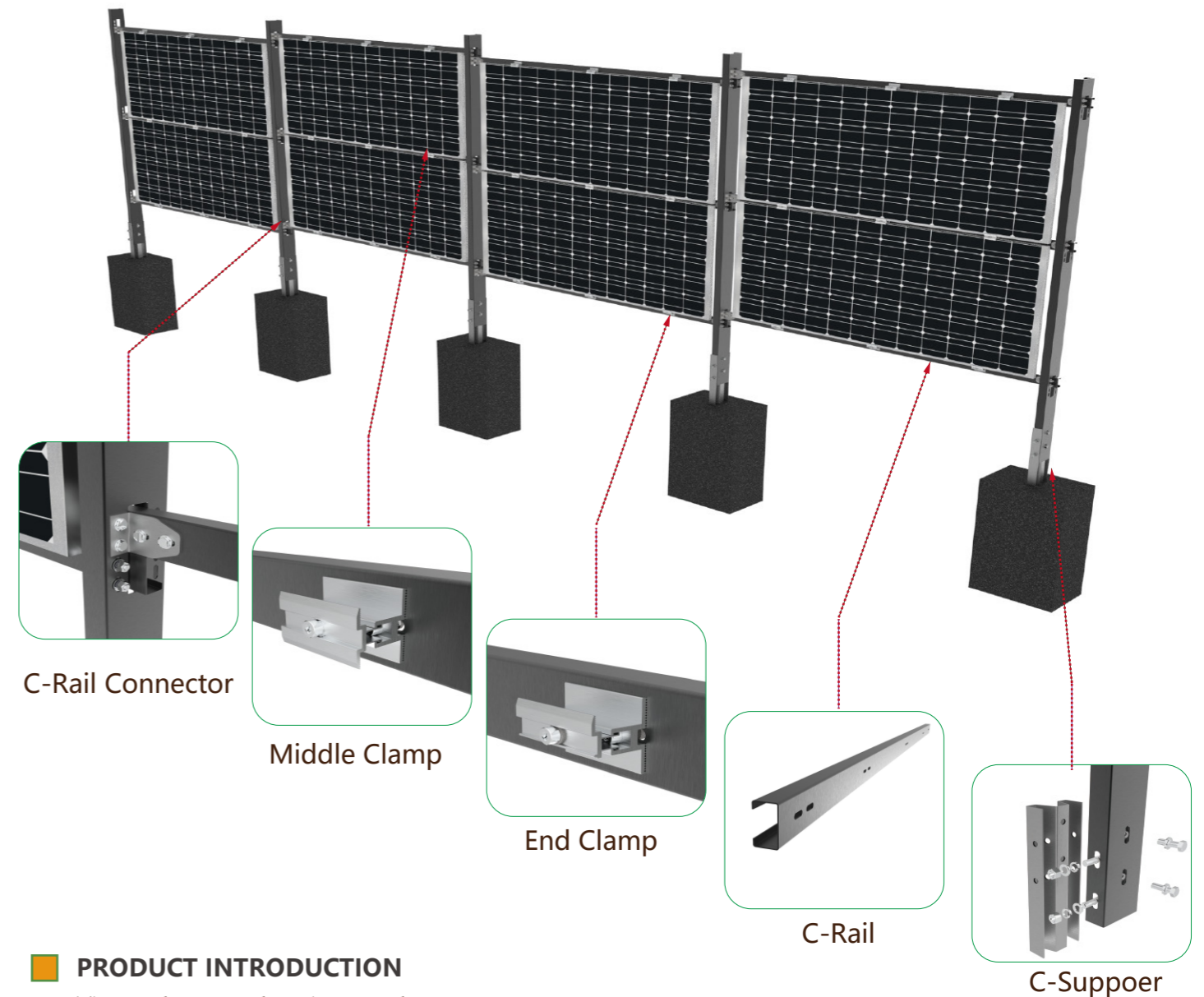
Application scenario: Metal/Flat Roof

Balcony Solar Mount, Material aluminum AL6005-t5, through professional design to make the support parts and accessories perfectly connected, easy to install, safe and reliable.

- Technical Details:
 - 1. Angle: 0~45°
 - 2. Module Orientation: : Module Vertical Or Landscape
 - 3. Pull-Out Resistance: ≥1.2KN
 - 4. Wind load: ≤60m/s
- 5. Snow load: ≤1.6KN/ m²
 - 6. Material: Aluminum AL6005-T5 (AA10~AA20)
 - 7. Surface Treatment: Natural anodized, Black anodized, And other color customizations.
 - 8. Quality Warranty 12 years, Service life of 25 years.

■ Applicable standard: Japan JIS C8955:2017、China GB 50009 2001、Europe EN 1991-1-4:2005、India: IS:875、Australia AS NZ 1170、USA ASCE7 wind load、Malaysia MS 1553:2002 And other national standards.

Vertical Solar Mount



PRODUCT INTRODUCTION

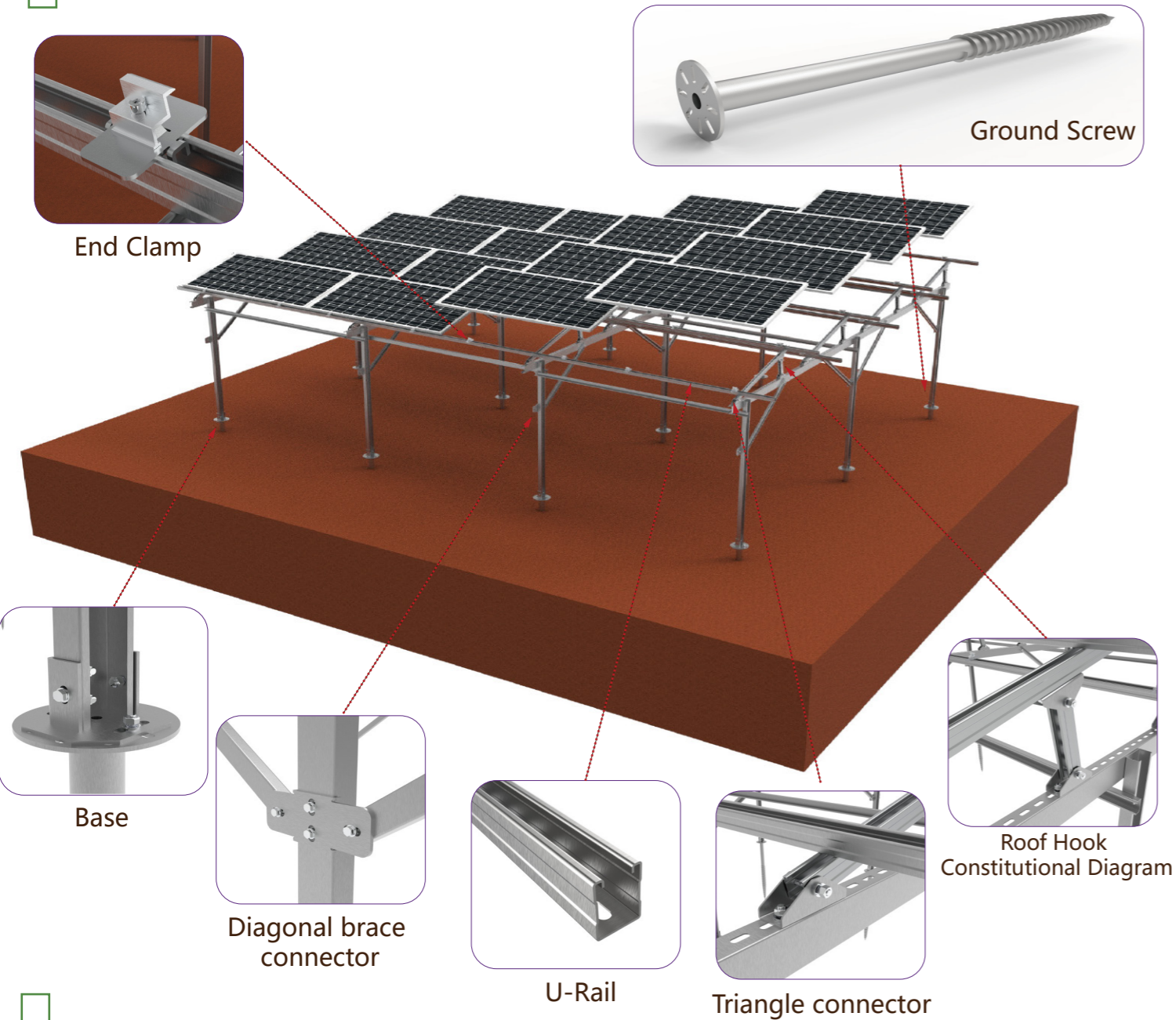
This product is used on the ground, and the main structure is combined with galvanized steel and ZMA steel. through professional design to make the support parts and accessories perfectly connected, easy to install, safe and reliable.

- Product system parameters:
 - 1. Installation position; The ground.
 - 2. Component direction: Based on actual requirements
 - 3. Pull strength: according to the design definition
 - 4. Wind carrying capacity: 38m/s
- 5. Snow load capacity: 1.6KN/ m²
 - 6. Material: Galvanized steel and ZAM steel
 - 7. Color: natural color, black and other colors custom
 - 8. Warranty 12 years, service life: 25 years

■ Applicable standard: Japan JIS C8955:2017、China GB 50009 2001、Europe EN 1991-1-4:2005、India: IS:875、Australia AS NZ 1170、USA ASCE7 wind load、Malaysia MS 1553:2002 And other national standards.

OTHERS Solar Mounting Series

Solar Farm Mounting System



PRODUCT INTRODUCTION

Solar power plant installation system, the material of galvanized steel/zma steel, through professional design to make the support parts and accessories perfectly connected, easy to install, safe and reliable.

- Technical Details:
 1. Angle: 0~30°
 2. Module Orientation: : Module Vertical Or Landscape
 3. Wind load: ≤ 60m/s
 4. Snow load: ≤ 1.6KN/ m²
 5. Material: Galvanized steel/ZMA-Steel
 6. Surface Treatment: Galvanized/ZMA Coating
 7. Quality Warranty 12 years, Service life of 25 years.

Applicable standard: Japan JIS C8955:2017、China GB 50009 2001、Europe EN 1991-1-4:2005、India: IS:875、Australia AS NZ 1170、USA ASCE7 wind load、Malaysia MS 1553:2002 And other national standards.

CERTIFICATIONS



GLOBAL PROJECTS

