

# ANKRA ENERGIES

Your Journey Our Experties

## Product Catalouge



**GSTIN:** 09ACHFA8895N1ZD

**Registered Office:** H-316, Govind Puram,  
Ghaziabad, 201013, UP

**Corporate Office:** 156, Dakshin Dari Road, South  
Dum Dum (M) Sribhumi, North 24 Paraganas, West  
Bengal, 700048



## Photovoltaic(PV) Panels

PV Panels are made of interconnected solar cells, typically made of silicon. Solar panels come in three main types: Polycrystalline (poly) panels, Monocrystalline panels, and Bi-facial panels, each offering varying levels of efficiency and cost.

Range - 300W - 650W

Brands - Adani, Waree, Vikram, REIL



## Inverters

Inverters convert the DC electricity generated by solar panels into AC electricity that can be used in homes and businesses. We are dealing in On-Grid Inverters, Off-Grid Inverters and Hybrid Inverters.

Range - 48V - 240V

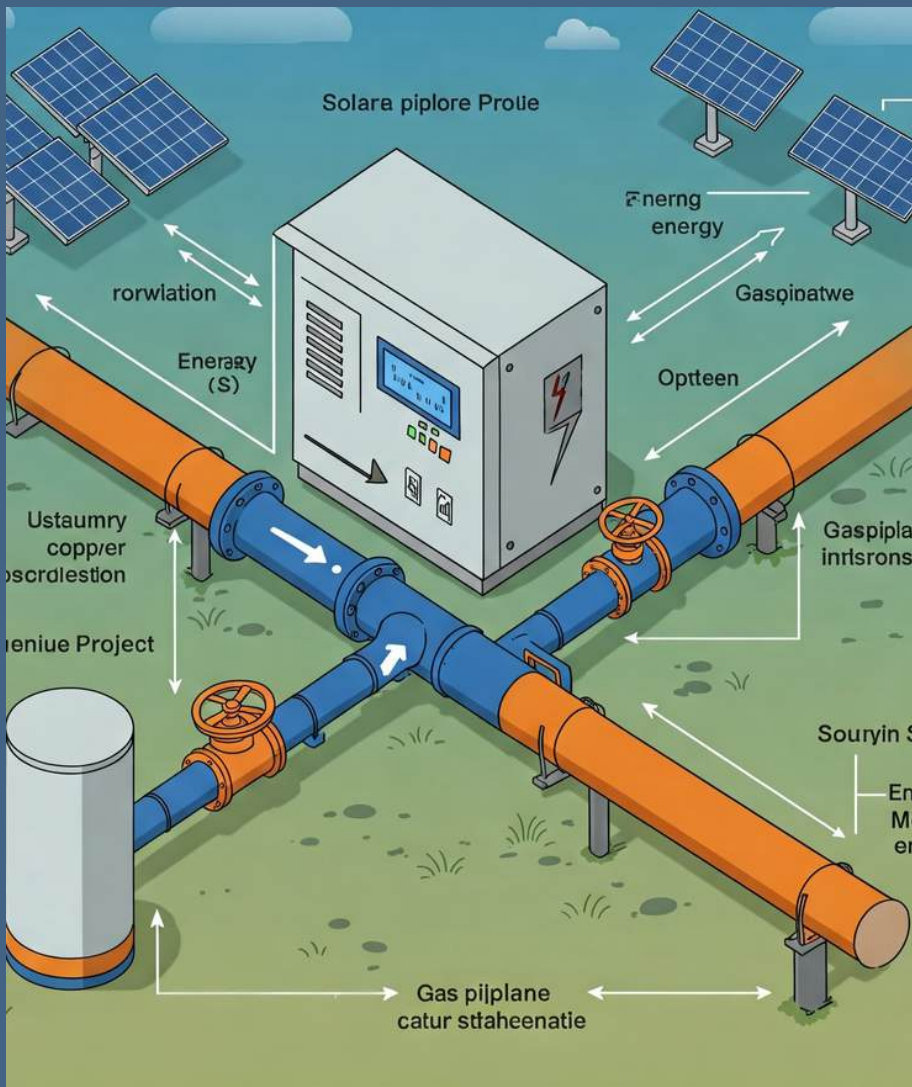
Brands - Statcon Energia, Solis, Deye



## MMS Structure

Module Mounting Structures are the frameworks that hold and support solar panels on rooftops, ground mounts, or other installations. We will provide two types of structure - Roof mounted and Ground mounted structure.

We are dealing in Household, commercial and oil and gas pipeline projects.



## Grid Charger & Components

A grid charger ensuring uninterrupted power supply for essential monitoring, protection, and control systems. It enhances the reliability of pipeline operations by efficiently managing power conversion, distribution, and backup energy storage.

We are dealing in AJB (Array Junction Box), ACDB (AC Distribution Box), DCDB (DC Distribution Box), Solar Charge Controller.



## Batteries

We supply high-performance energy storage solutions, including VRLA (Valve Regulated Lead Acid) batteries and LiFePO<sub>4</sub> (Lithium Iron Phosphate) batteries, designed for various industrial, renewable energy, and backup power applications.

- VRLA (Valve Regulated Lead Acid) Batteries
- LiFePO<sub>4</sub> (Lithium Iron Phosphate) Batteries



## Solar Street Lights

We offer a wide range of solar lights to suit your needs. Our lights are available in a variety of styles, including

- Flame Proof
- Non-Flame Proof

We also offer lights with different IP ratings -

- IP66
- IP55
- IP44

Brand - PyroTech, Philips, Finolex or equi.



## Battery Energy Storage System (BESS)

BESS solutions to enhance the efficiency, reliability, and sustainability of power systems.

Technical Specification -

Battery Type - Lithium-ion (Li-ion), Lithium Iron Phosphate (LiFePO<sub>4</sub>), Lead-Acid

Capacity - 1KWH - 10MWH

Life Cycle - 1500 - 6000+

Operating Voltage - 12.8V / 25.6V / 48V / 51.2V / 96V / 240V / 480V

Protection - IP 20 / IP 54 / IP 65

Integration - Compatible with Solar PV, Wind, Diesel Generators, and Grid



## EV Batteries

We provides high-performance EV batteries designed for various electric vehicle categories, ensuring superior efficiency, long life, and robust safety.

Technical Specification -

Type	Voltage (V)	Capacity (Ah)	Cycle Life
L2	48V / 60V	12Ah - 30Ah	1500+ cycles
L3	60V / 72V	25Ah - 50Ah	2000+ cycles
L4	48V / 60V	80Ah - 150Ah	2500+ cycles
L5	72V / 96V	150Ah - 250Ah	3000+ cycles



## LiFePO<sub>4</sub> (Lithium Iron Phosphate) Cell Trading

We offer a wide range of high-quality LiFePO<sub>4</sub> cells ideal for EVs, solar energy storage, UPS systems, and industrial power solutions.

Types -

- Cylindrical LiFePO<sub>4</sub> Cells
- Prismatic LiFePO<sub>4</sub> Cells
- Pouch LiFePO<sub>4</sub> Cells

Technical Specification -

Voltage - 3.2V per cell

Capacity Range - 10Ah - 500Ah

Cycle Life - 1500 - 6000+

Safety Features - Overcharge, Over-discharge, Short circuit, and Temperature protection



## BOS (Balance of System)

We supply a comprehensive range of Balance of System (BOS) components that ensure the efficient and reliable operation of solar and electrical systems. Our BOS offerings include:

1. **Cables** - High-quality DC and AC cables designed for power transmission in solar and industrial applications.

Technical Specifications:

- Voltage Rating: 1.1kV / 600-1000V
- Conductor Material: Copper / Aluminum
- Insulation: XLPE / PVC / EPR
- Sheathing Material: FRLS / HRPVC / LSZH
- Temperature Range: -40°C to +90°C
- UV & Weather Resistance: Yes

Types:

- Solar DC Cables (PV Cables) – 2C x 50, 2C x 10, 2C x 16, 2C x 25, 2C x 95
- LT Power Cables – Single-core & multi-core
- HT Cables – Up to 33kV rating

**Brand: Finolex, PolyCab, KEI, PyroTech, Ultra Cable, Avo Cab, Suyog, Paramount or equivalent**

2. **Lugs** – Copper and aluminum lugs for secure electrical connections.

Technical Specifications:

- Material: Electrolytic Copper / Aluminum
- Plating: Tin-plated for corrosion resistance
- Operating Temperature: Up to 120°C
- Standards: IS 8309, BS 7609

Types:

- Copper Lugs (Ring, Pin, Fork, Spade)
- Aluminum Lugs
- Compression Lugs

**Brand: Dowells, Stokes, Braco or equivalent**

3. **Glands** – secure and terminate cables in electrical enclosures, protecting them from dust, moisture, and mechanical stress.

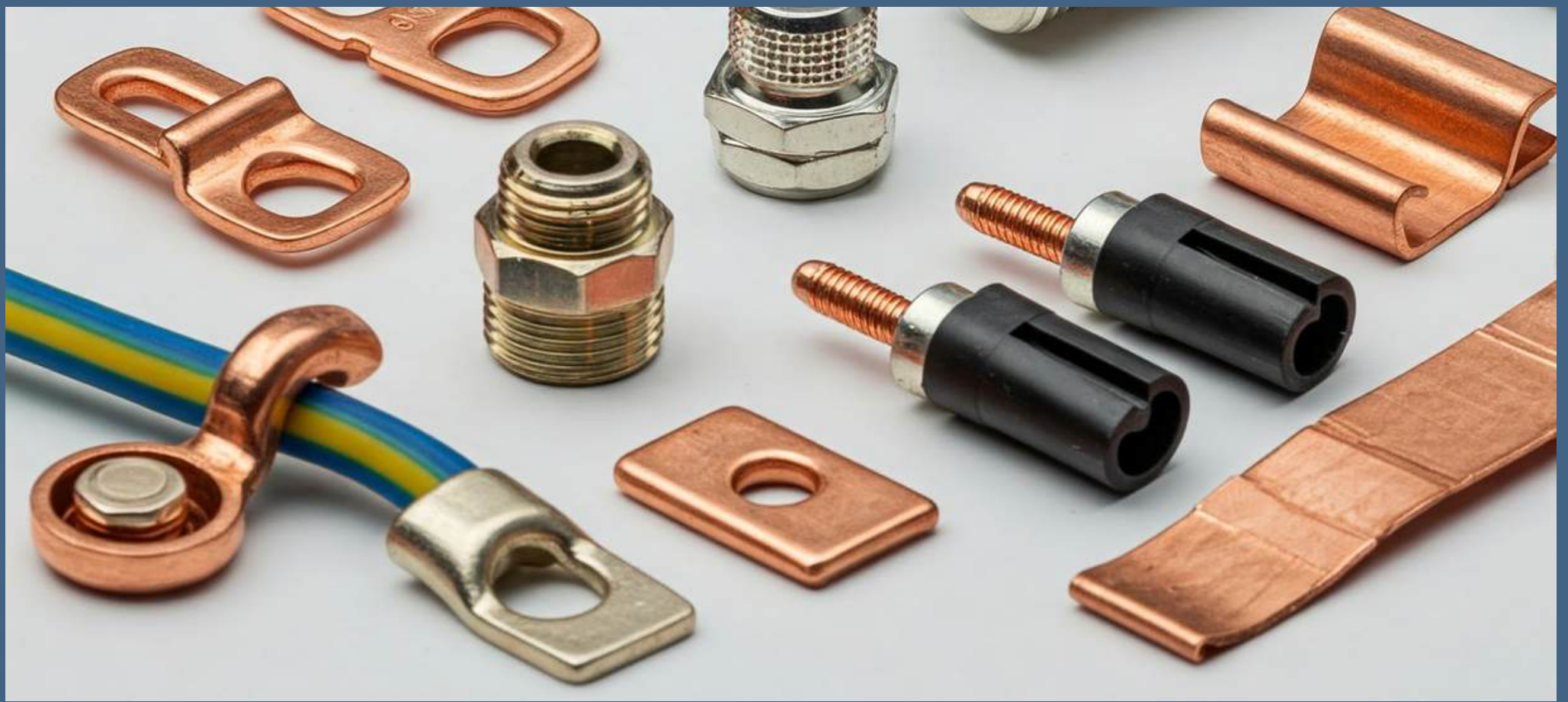
Technical Specifications:

- Material: Brass / SS / PVC / Polyamide
- IP Rating: IP67 / IP68
- Thread Type: Metric / PG / NPT
- Temperature Range: -40°C to +100°C

Types:

- Single Compression Glands
- Double Compression Glands
- Flameproof & Explosion-proof Glands

**Brand: Dowells, Stokes, Braco or equivalent**



## BOS (Balance of System) Continue ...

4. **Thimbles** – Thimbles are used to strengthen the loop ends of wire ropes or cables, preventing wear and tear.

Technical Specifications:

- Material: Galvanized Steel / Stainless Steel / Copper
- Size: 1mm to 50mm diameter
- Standards: DIN 6899, IS 8337

Types:

- Closed-End Thimbles
- Open-End Thimbles
- Heavy-Duty Thimbles

**Brand: Dowells, Stokes or equivalent**

5. **Earthing Cables** - Earthing cables provide a direct path for fault currents, protecting electrical systems from short circuits and voltage surges.

Technical Specifications:

- Conductor Material: Copper / GI / Aluminum
- Size Range: 16mm<sup>2</sup> to 240mm<sup>2</sup>
- Insulation: PVC / Bare Copper

Types:

- Bare Copper Earth Cables
- PVC Insulated Earth Cables

**Brand: TruePower, HEX or equivalent**

6. **Earthing Insulators** - provide mechanical support and electrical isolation for earthing conductors.

Technical Specifications:

- Material: Porcelain / Polymer / Composite
- Dielectric Strength: Up to 30kV
- Operating Temperature: -40°C to +120°C

Types:

- Disc Insulators
- Pin Insulators
- Post Insulators

**Brand: TruePower, HEX or equivalent**

7. **Earthing Kit** - complete grounding solution designed to ensure safe electrical discharge and protection against faults, lightning, and voltage surges.

Types:

- Conventional Earthing Kit
- Copper Bonded Earthing Kit
- GI Earthing Kit
- Advanced Lightning Protection Earthing Kit

**Brand: TruePower, HEX or equivalent**



## BOS (Balance of System) Continue ...

**7. Conduit & Accessories** – protective tubing used to route and safeguard electrical wiring in installations. Conduit accessories include fittings that enhance the flexibility and security of conduit installations.

### Technical Specifications:

- Material: PVC / HDPE / Steel / GI
- Size Range: 16mm to 100mm
- Fire Resistance: Yes, IP 54 / IP 67
- Standards: IEC 61386, IS 9537

### Types:

- Rigid PVC Conduits
- Flexible Metallic Conduits
- Electrical Metallic Tubing (EMT)
- Elbow, Tees, Socket, Couplers
- Fiberglass Reinforced Plastic (FRP)

**Brand: SumiP, Finolex, PolyCab, Apollo, Astral or equivalent**

**8. Cable Trays** - provide structured support for electrical cables in industrial and commercial installations.

### Technical Specifications:

- Material: GI / Aluminum / Stainless Steel
- Load Capacity: Up to 150kg/m
- Width Range: 50mm to 1000mm
- Finishing: Hot-dip galvanized, Powder-coated

### Types:

- Ladder Type Cable Trays
- Perforated Cable Trays
- Solid Bottom Cable Trays
- Fiberglass Reinforced Plastic (FRP)

**Brand: SumiP, Elcon or equivalent**

**9. MC4 Connector** - ensure safe and efficient electrical connections between cables and devices.

### Technical Specifications:

- Material: Copper / Brass / Aluminum
- Voltage Rating: Up to 1000V
- IP Rating: IP65 / IP67
- Temperature Resistance: -40°C to +90°C

### Types:

- MC4 Solar Connectors
- Ring & Pin Type Connectors
- Crimp Connectors

**Brand: Elmex or equivalent**



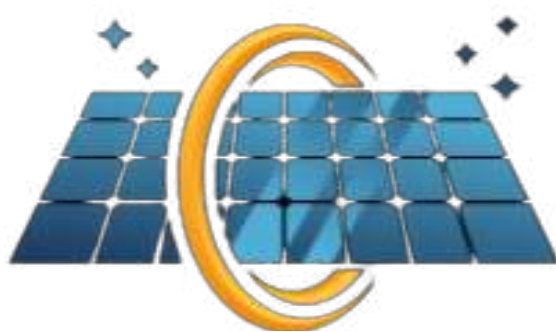
# KEEP IN TOUCH

Phone : +91-9818010156

Email : [sales@ankraenergies.com](mailto:sales@ankraenergies.com)

Website : [www.ankraenergies.com](http://www.ankraenergies.com)

Social : [@ankraenergies](#)



## **ANKRAENERGIES**

---

**Your Journey Our Experties**