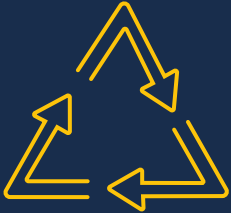


# FIMIC®

ITALIAN.MELT.FILTER



PAPER, RUBBER,  
PLASTIC CUTTING

# GUILLO TINES



READ IT  
IN YOUR  
LANGUAGE





# WE ARE FIMIC

When FIMIC was born, back in 1963, our first line of products was the manufacturing of guillotines for cutting of bales and rolls of industrial waste (paper, rubber and plastics). 60 years later, guillotines still retain their place as our flagship products thanks to our state-of-the-art and fully customized production approach, which sets them apart for the rest of the market.

FIMIC showcases a long-term experience in machines manufacturing, expanded through the years to different applications within the plastics recycling industry. This is how in 1996, we decided to improve the filtration method available at the time, which was fully done by hand, with the first FIMIC backflush melt filter entering into service the following year. Finally, just one year later, the "scraping" system came into play, and since then FIMIC's filtration technology is recognized world-wide, being the only company in the market offering a range of five different models of automatic melt filters and a series of screw pump solutions capable to target highly contaminated plastics, especially post-industrial and post-consumer waste streams.

FIMIC keeps improving its recycling technologies in order to meet and satisfy the needs (quality, characteristics) of recyclers & converters, facing at the same time the challenges of an industry in constant development.





# FULLY CUSTOMIZED HEAVY DUTY GUILLOTINES



# GUILLOTINES

FIMIC guillotines are built with the unmatched Italian expertise and craftsmanship, therefore they guarantee peerless resistance, strength and high safety standards. They require almost no maintenance and deliver a flawless result even after 25 years of use.

Two different kinds of materials including paper, rubber and plastics and to perform different cuts

## ECO SERIES

Our best seller and headliner, able to truly cut anything it is presented with! ECO series cutting power ranges from 30 ton up to 60 ton, making it suitable to cut with precision any type of material, especially rolls.

Type	ECO 30	ECO 60
Cutting Power	30 ton	60 ton
Cutting Dimension	1.300 x 1.200 mm 1.600 x 1.200 mm 1.600 x 1.600 mm 2.000 x 1.200 mm 2.000 x 1.600 mm	2.000 x 1.200 mm 2.000 x 1.600 mm 2.600 x 1.200 mm 2.600 x 1.600 mm



## C SERIES

Our strongest and most powerful guillotine, dedicated to more demanding applications, is presented in various models, delivering a cutting power from 60 ton up to 120 ton, depending on the input material's characteristics.

Type	C 60	C 100	C 120
Cutting Power	60 ton	100 ton	120 ton
Cutting Dimension	1.600 x 1.200 mm 1.600 x 1.600 mm 2.000 x 1.200 mm	1.600 x 1.200 mm 2.000 x 1.200 mm 2.600 x 1.200 mm 1.600 x 1.600 mm 2.000 x 1.600 mm	2.000 x 1.200 mm 2.600 x 1.200 mm

# GUILLOTINES CHARACTERISTICS



## Perfectly tailored

Every guillotine we manufacture is a unique piece, carefully tailored to its required task and customer's needs, to achieve just the perfect result.



## Unbreakable

Those who choose our guillotines know for a fact that 25 years later they'll still work like the first day. Such a feat is achieved through flawless design, heavy-duty execution and manufacture.



## State-of-the-art

FIMIC guillotines are recognizable at first glance, they're manufactured with the state of the art craftsmanship trademark: Made in Italy.



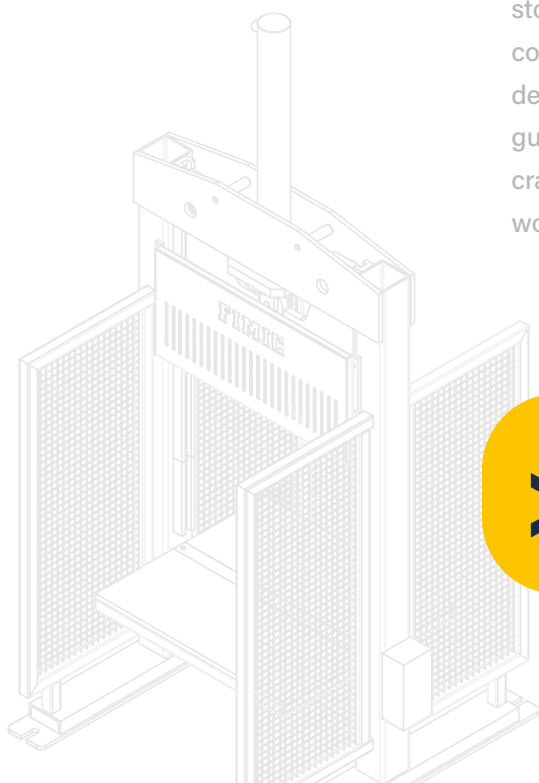
## Cutting edge

With a cutting power reaching up to 120 ton, FIMIC guillotines can truly cut through anything: applicable to paper, rubber and plastic waste!



## Customized

Almost entirely customizable by the customer, our guillotines can fit every need concerning layout, safety and output. Our designing team works hard on every single guillotine with the caring hands of expert craftsmen, treating them like their own works of art.



**>400**

**UNITS  
INSTALLED  
ALL OVER  
THE WORLD**

# GUILLOTINES OPTIONALS

## NOTHING IS OUT OF REACH

If you need it, we can build it. We know that every project is unique, therefore FIMIC's guillotines can be highly customized allowing you to create your project and have the solution that you need. Let's design your FIMIC guillotine together!



**Infrared safety barrier**  
Entry and/or Exit side



**Automatic discharge table**



**Cutting table's elongation**  
Entry and/or Exit side



**Conveyor belt**  
Entry and/or Exit side



**Fully or Semi-Automatic Operation**



**Motorized Roll conveyor**



**Adaptation of cutting height**



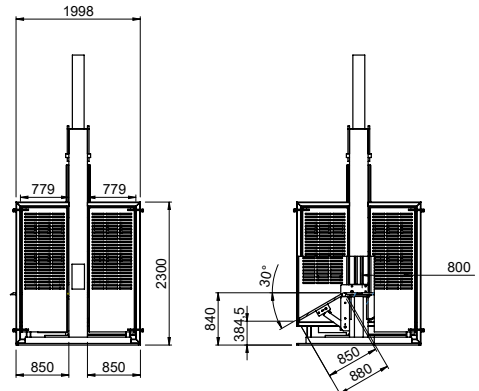
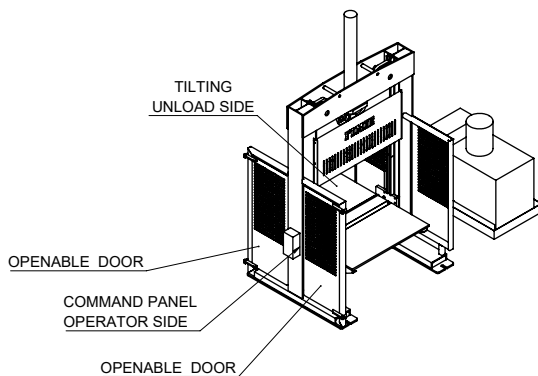
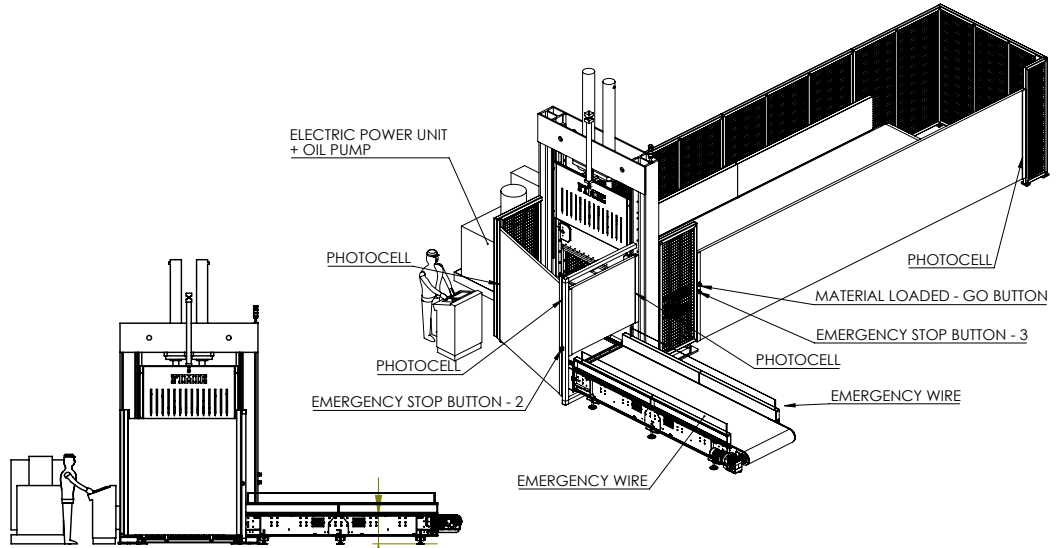
**Pushing system**  
(depending on dimensions)



**Protection gate**  
Entry and/or Exit side

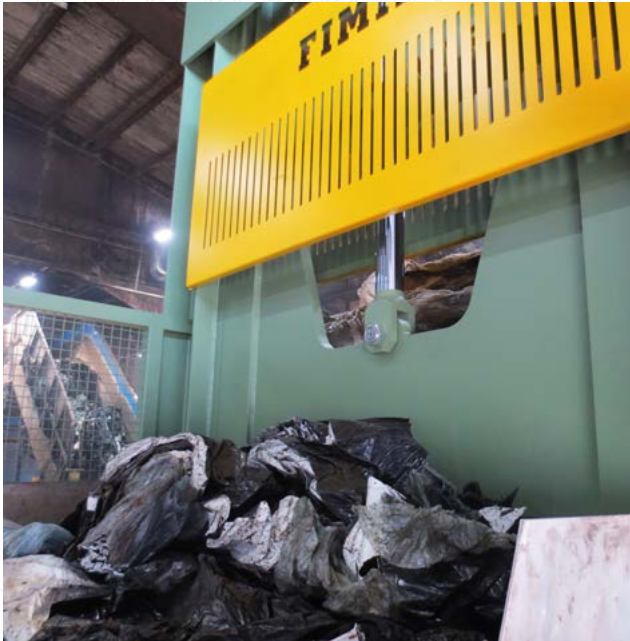
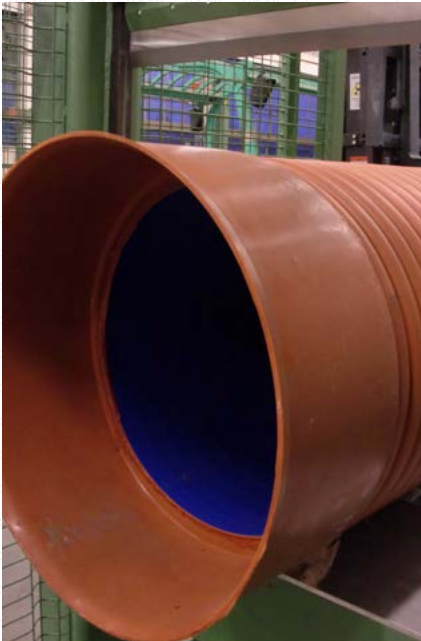
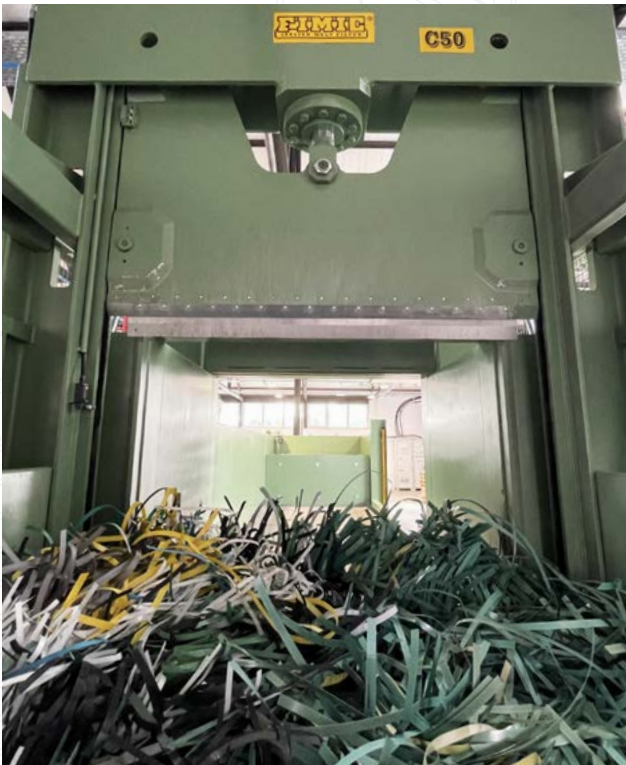
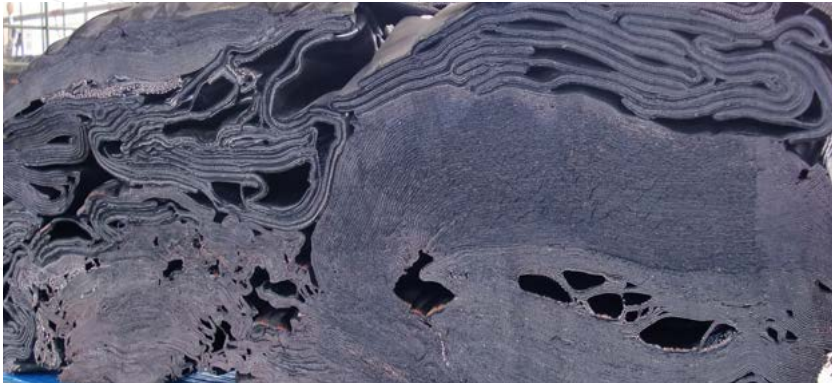


**Rapid cut system**  
(involving a different hydraulic unit and different parameters)





# SOME CUTTING EXAMPLES



... AND  
MANY  
MORE

WATCH OUR  
GUILLOTINES IN  
ACTION!



FIMIC

**FIMIC**<sup>®</sup>  
ITALIAN.MELT.FILTER

FIMIC srl Via Ospitale 44, 35010 Carmignano di Brenta - PD  
T. +39 049 595 71 63 F. +39 049 595 80 96 - [www.fimic.it](http://www.fimic.it)  
VAT-No. & C.F. IT04785520281

