

N F K international
NY|USA

HEALTHCARE TABLES
WOOD FINISHES AND ACCESSORIES

TABLE LEGS / TITI



P16



P18

Feet option only available on TITI range

TABLE LEGS / MOD. MIMI



P1



* P2

METAL INSERT FINISHING



F1



F3



F2



F4

- F1 - Chrome
- F2 - Mat Nickel
- F3 - Oxy Bronze
- F4 - Matt Black

WOOD FINISHINGS

CF Solvent-based beech wood stain colour



CF34



CF70



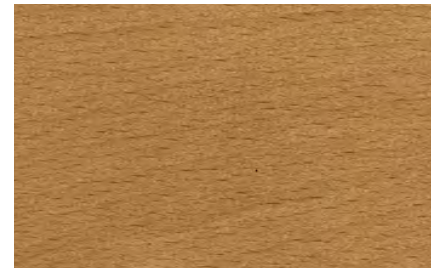
CF61



CF10



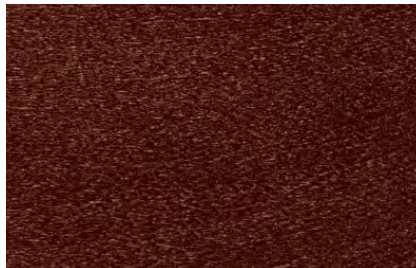
CF11



CF51



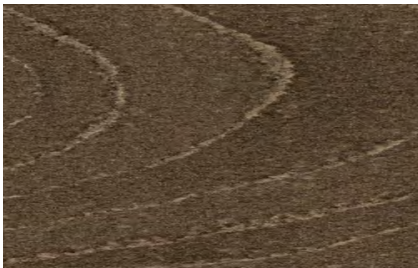
CF54



CF18



CF53



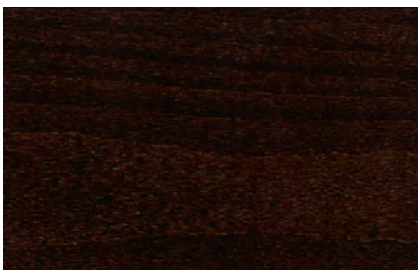
CF55



CF25



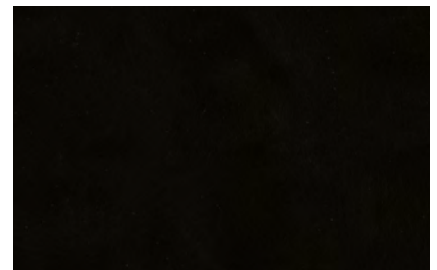
CF24



CF17



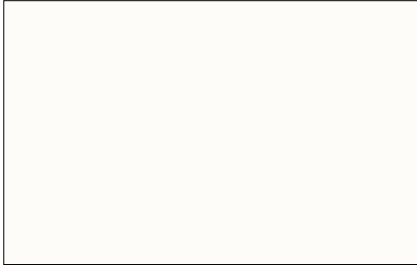
CF19



CF20

Colours are only indicative

LAMINATES



B 070 FA



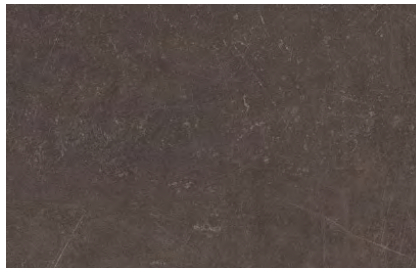
N 005 ROCHE



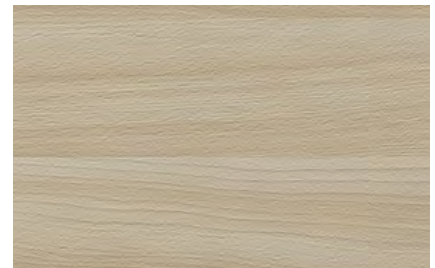
C 128 EXM



B 134 EXM



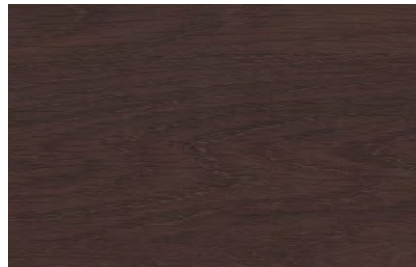
G 087 EXM



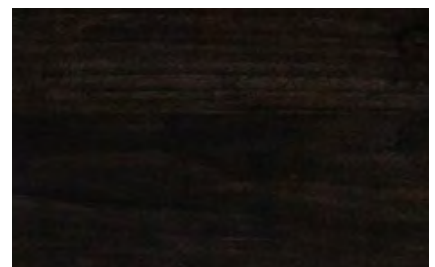
H 028 SEV



H 029 SEV



C 047 FA

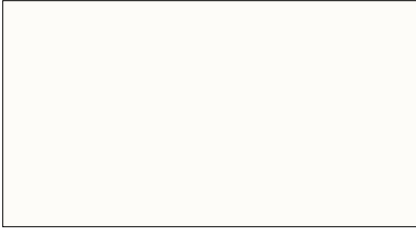


T 105 FA

For other colors, please consult us

Colours are only indicative

LAMINATE EDGES



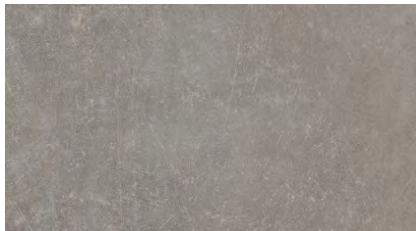
B 070 FA - OR



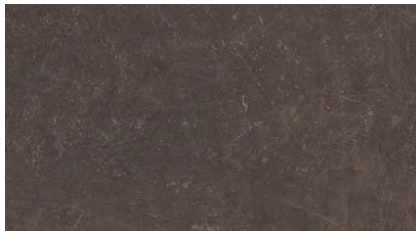
N 005 ROCHE - OR



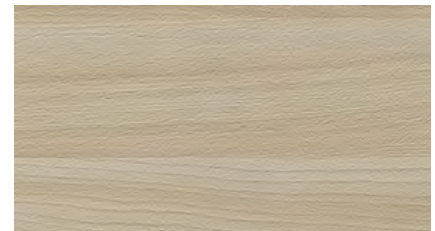
C 128 EXM - OR



B 134 EXM - OR



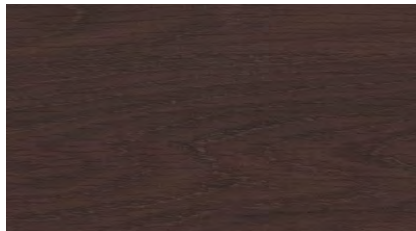
G 087 EXM - OR



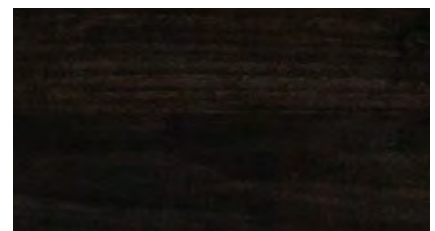
H 028 SEV - OR



H 029 SEV - OR



C 047 FA - OR



T 105 FA - OR

For other colors, please consult us

Colours are only indicative

MELAMINE



H 1486 ST36



H 1400 ST36



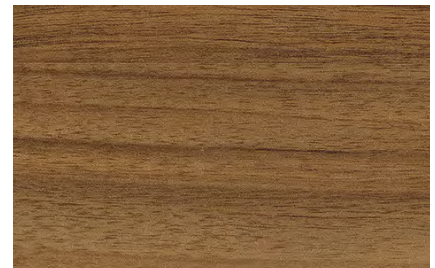
H 1277 ST9



H 1582 ST15



H 1615 ST9



H 3734 ST9



H 1150 ST10



D 854 BS

For other colors, please consult us

Colours are only indicative

MELAMINE EDGES



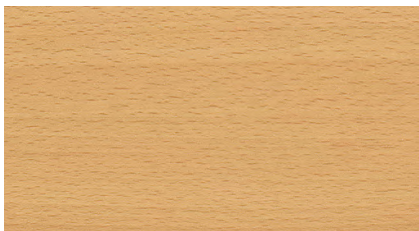
H 1486 ST36 - OR



H 1400 ST36 - OR



H 1277 ST9 - OR



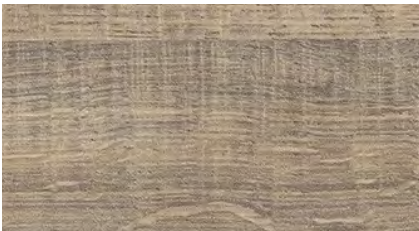
H 1582 ST15 - OR



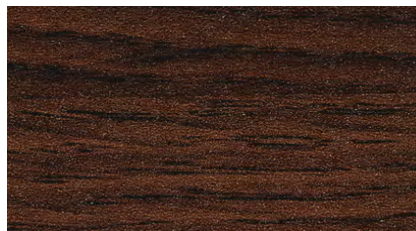
H 1615 ST9 - OR



H 3734 ST9 - OR



H 1150 ST10 - OR



D 854 BS - OR

For other colors, please consult us

Colours are only indicative