



HEALTHCARE SEATING  
WOOD FINISHES AND ACCESSORIES

GLIDES

D05 - WHITE

Tiled floor / Carpet



D05 - BROWN

Tiled floor / Carpet



D06 - WHITE

Parquet / Tiled floor



D06 - BROWN

Parquet / Tiled floor



D09 - WHITE

Tiled floor / Carpet



D09 - BROWN

Tiled floor / Carpet



D07

Carpet



\*

D15

Tiled floor / Carpet



\*

+ 8\$

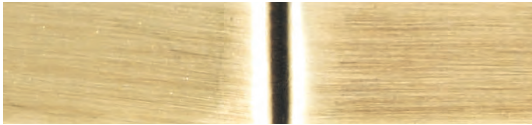
Set of 4 pcs

METAL FINISHING

F1



F3



F1 - Chrome

F3 - Oxy Bronze

F2



F4



F2 - Matt Nickel

F4 - Matt Black

WHEELS



RD01

33\$

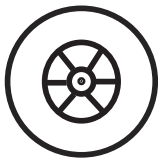
Set of 2 pcs



RD02

39\$

Set of 2 pcs



165 Lbs

3"



RD17

77\$

Set of 2 pcs



RD18

92\$

Set of 2 pcs



CH-0030

29\$

Set of 2 pcs



220 Lbs

4"



RD19

165\$

Set of 2 pcs



RD20

175\$

Set of 2 pcs

HANDLE



PX-013
38 \$

- PX-013 only available on chairs and armchairs

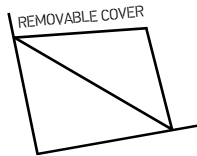


PX-014
39€

- PX-014 only available on lounge armchairs

REMOVABLE COVER

- Removable cover available on all models with removable seat system



A	25\$
B	32\$
C	37\$
D	42\$
E	59\$
F	68\$
C.O.M	22\$

HEADREST

- Headrest pillow only available on lounge armchairs



A	42\$
B	49\$
C	54\$
D	60\$
E	70\$
F	87\$
C.O.M	38\$

KIDNEY CUSHION



A	42\$
B	49\$
C	54\$
D	60\$
E	70\$
F	87\$
C.O.M	38\$

SEAT



- Removable seat

FABRIC

Extra charge for models upholstered in more than two fabrics	QTY	%
	1 - 6	+10%
	6 - 50	+6%
	50 - 100	+3%
	+100	+0%
Extra charge for models upholstered in leather	+5%	
Extra charge for striped or patterned fabrics	+5%	

TYPE OF SEWING STITCHES

COLLECTION	STITCH
AMIRA/EMMA	DCL20
ARIANA	TCL20
BEA/BEA	DCL20
BLAIRE	DCL20
CLARA	DCL20
NANCY	TCL20
TAYLOR	DCL20



DCL20



TCL20

## FOAM

- CMHR foam 66-88 lbs/1.30 yd<sup>3</sup> included in all models



## PACKAGING

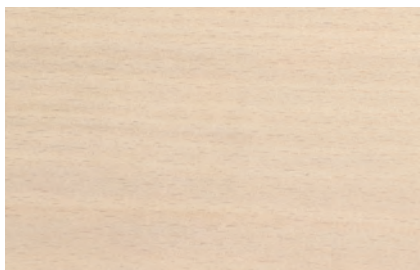


- All products are packed according to a high level of quality, in order to ensure the integrity of the product, protecting them during transportation until the final delivery. In order to achieve this, we use good quality thick carton boxes, as well as polyethylene protections corners and plastic bags assuring thus a better packaging of our products.

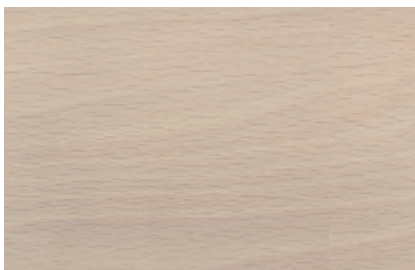


WOOD FINISHINGS

**CF** Solvent-based beech wood stain colour



CF34



CF70



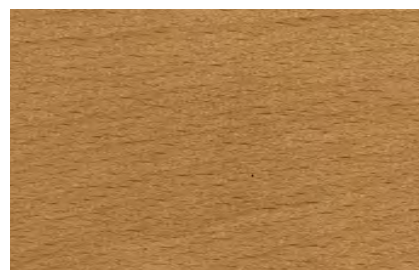
CF61



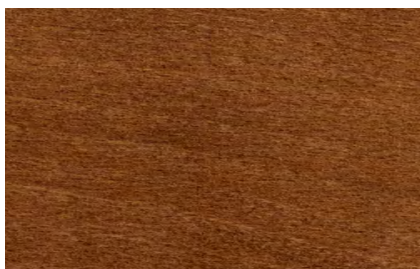
CF10



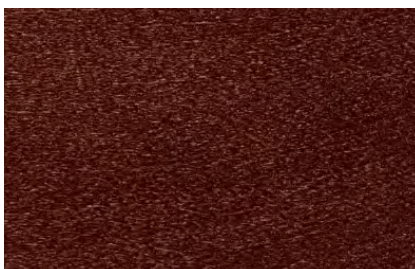
CF11



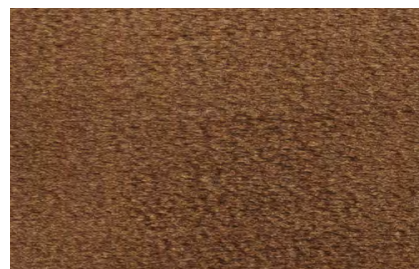
CF51



CF54



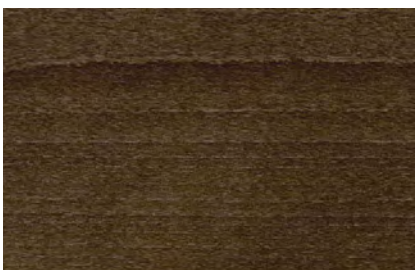
CF18



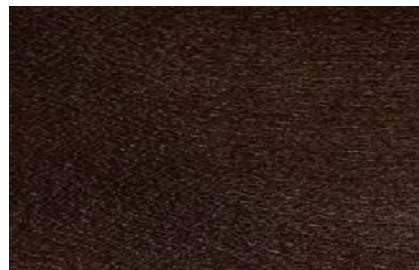
CF53



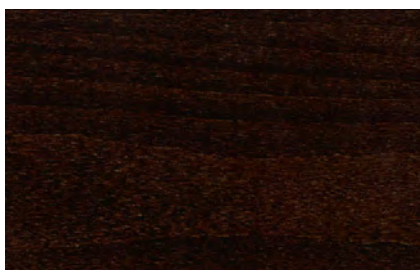
CF55



CF25



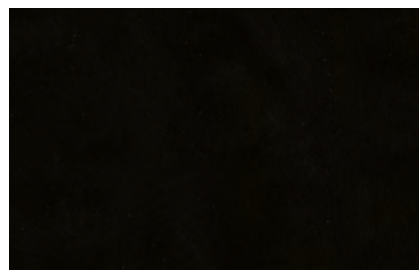
CF24



CF17



CF19



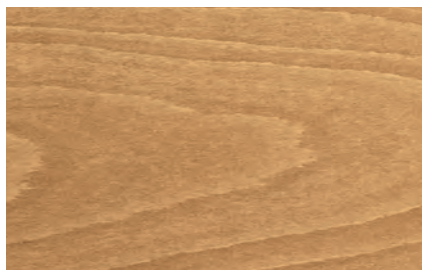
CF20

Colours are only indicative



WOOD FINISHINGS

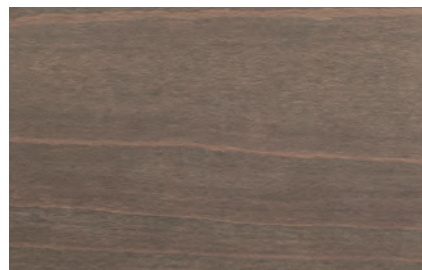
**CFA** Water-based beech wood stain colour



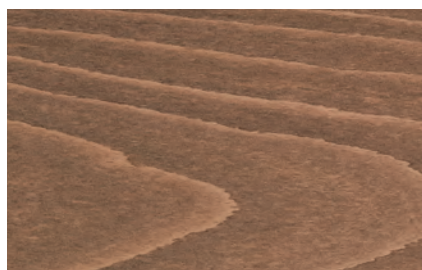
CFA111



CFA146



CFA159



CFA150



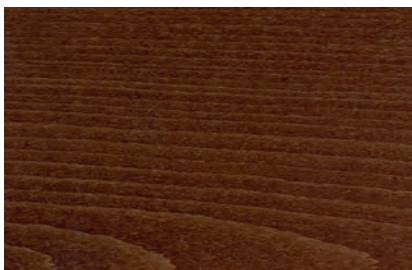
CFA151



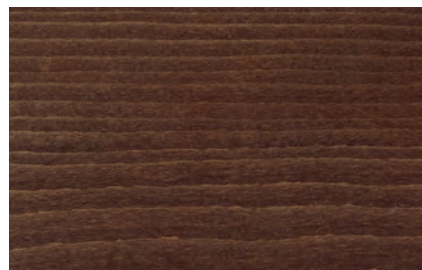
CFA123



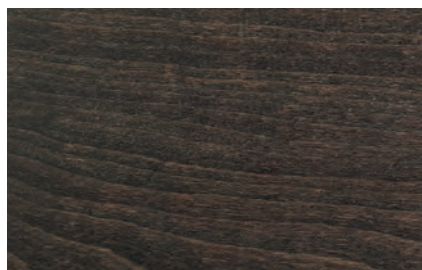
CFA152



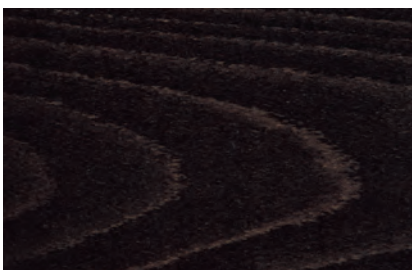
CFA116



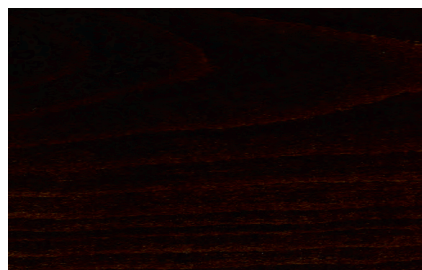
CFA125



CFA161



CFA124



CFA117

Colours are only indicative

WOOD FINISHINGS

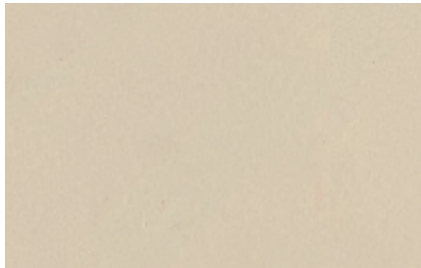
CFP Pigmented finishings



CFP87



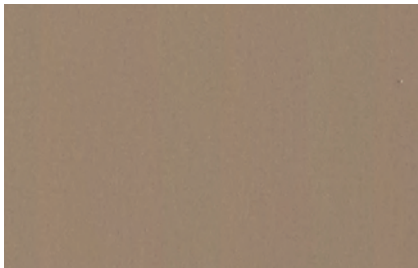
CFP72



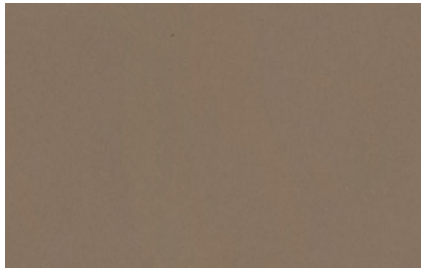
CFP73



CFP90



CFP91



CFP92



CFP83



CFP81



CFP88