

NFK international

NYIUSA

FABRICS

INDEX



CATEGORY A



Amsterdam

page 7.



Bombay

page 8.



Inca

page 9.



Angel

page 10.



Velvety

page 11.



Grisù

page 12.



Avantgarde

page 13.





Smart Collection

page 14.



Smart Velvet

Smart Chenille

Smart Super Structure

Smart Linen



Lani

page 15.



Ponza

page 16.



Sole

page 17.



Bhaluka

page 18.



California TB 117:2013

Ada

page 19.



Cosy

page 20.





Harper

page 21.



Wilson

page 22.



Colour Connect

page 24.



Zenith

page 24.



Soft Unito

page 26.

Ocean

page 27.



CATEGORY A



Amsterdam FR

DIN EN 1021-2

BS 5852 Source 1

BS 5852 Source 5 / Crib 5

UNI 9175 2010 CLASSE 1.IM

Composition 100% Polyester

Width 140 cm +/-2%

Weight 550 gr/m2 +/-5%

Category **Contract, Plain, Upholstery**

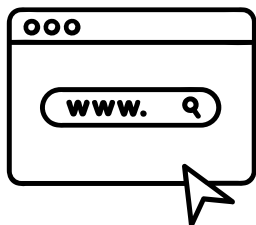
Usage  

Treatment  

Care     



ABRASION RESISTANCE >100.00



<https://www.mercis.si/product/amsterdam-fr/>

CATEGORY A













Bombay FR

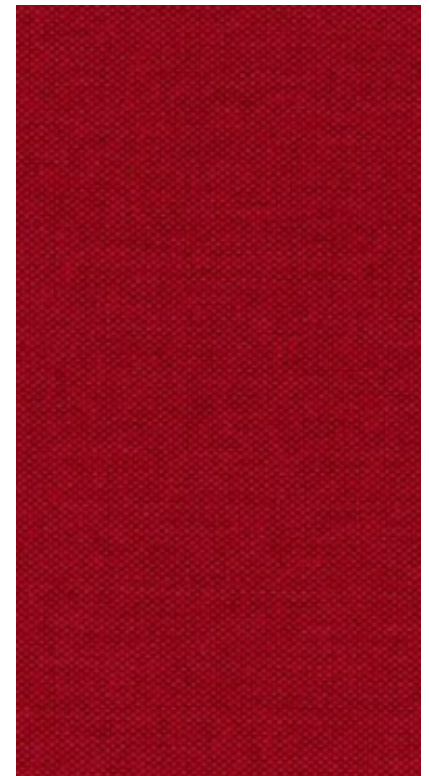
EN 1021-2

BS 5852 Source 1

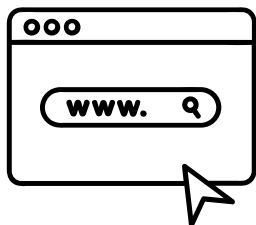
BS 5852 Source 5 / Crib 5

UNI 9175 2010 CLASSE 1.IM

Composition	Surface/Back: 100% Polyester/100% Polyester
Width	140 cm +/-2%
Weight	410 gr/m2 +/-5%
Category	Contract, Plain, Upholstery
Usage	 
Treatment	 
Care	     



ABRASION RESISTANCE >100.00



<https://www.mercis.si/product/bombay-fr/>

CATEGORY A



Inca

features

88% pvc, 6% polyester, 6% cotton.

width

cm ± 140.

weight

± 650 gr/m².

thickness

± 0,95 mm.

roll length

approx. 30 lm, can also be cut-to-length at an extra cost.

abrasion resistance

> 100.000 rubs, ISO 5470-2.

fastness to rubbing

dry 4, wet 4, ISO 105 X12.

tensile strength

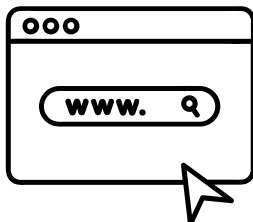
warp > 300 N/5 cm, weft > 200 N/5 cm, ISO 1421.

sustainability

phthalate free.

fire resistance

1IM - UNI 9175;
EN 1021 part 1/2;
BS 5852 part 1, is 0 and 1;
NF D-60 013 (AM. 18);
NFPA 260 Class 1;
California TB 117:2013;
IMO MED - Ftp 307 part 8;
ÖNOM B 3825 - schwer
brennbar.



<https://www.abitex.eu/en/inca/61/prdd.php>

CATEGORY A



Angel

features

100% polypropylene.

width

cm \pm 140.

weight

\pm 228 gr/m².

dyeing

solution dyed product.

roll length

approx. 35 lm, can also be cut-to-length at an extra cost.

abrasion resistance

> 100.000 rubs, ISO 12947-2.

fastness to rubbing

dry 5, wet 4/5, ISO 105 X12.

seam slippage

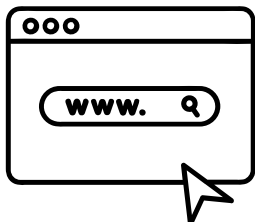
warp 3 mm, weft 4 mm, ISO 13936-2.

pilling

5, ISO 12945-2.

fire resistance

1IM - UNI 9175;
EN 1021 part 1/2;
BS 5852 crib 5;
NFPA 260 Class 1;
California TB 117:2013;
IMO MED - Ftp 307 part 8.



<https://www.abitex.eu/en/angel-fire-retardant-fabric-fabric-angel-fire-retardant-yarn/32/prdd.php>

CATEGORY A



Velvety

features

100% polyester.

width

cm \pm 150; upon request available in 300 cm width (only rolls).

weight

\pm 320 gr/m².

dyeing

piece dyed product.

roll length

approx. 30 lm., can also be cut-to-length at an extra cost.

abrasion resistance

> 50.000 rubs, ISO 12947-2.

fastness to rubbing

dry 5, wet 4, ISO 105 X12.

seam slippage

warp 3 mm, weft 3 mm, ISO 13936-2.

pilling

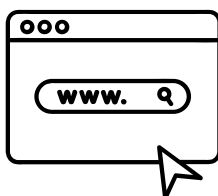
5, ISO 12945-2.

sound absorption

α_w 0,65 folded;
 α_w 0,55 not folded;
ISO 354 - G-100 type.

fire resistance

1IM - UNI 9175;
classe 1 - UNI 9177;
class 1 - EN 13773;
EN 1021 part 1/2;
BS EN 1021 part 1/2;
BS 7176 + A1 medium hazard;
BS 5852 crib 5;
BS 5867 part 2 type B;
BS 5867 part 2 type C;
NF-P 92 503 - M1;
NF D60-013 (AM18);
DIN 4102 - B1;
NFPA 701;
NFPA 260 Class 1;
California TB 117:2013;
IMO MED 3.20 - Ftp 307 part 8;
IMO MED 3.19 - Ftp 307 part 7;
ÖNOM B 3825 - schwer brennbar.



<https://www.abitex.eu/en/velvety/112/prdd.php>

CATEGORY A



Grisù

features

68% polyester, 32% polypropylene.

width

± 140 cm.

weight

± 400 g/m².

dyeing

solution dyed warp and yarn dyed weft.

roll length

aprox. 35 lm, can also be cut-to-length at an extra cost.

abrasion resistance

> 135.000 rubs, ISO 12947-2.

color fastness to light

> 6, ISO 105 B02.

seam slippage

warp 3 mm, weft 3 mm, ISO 13936-2.

pilling

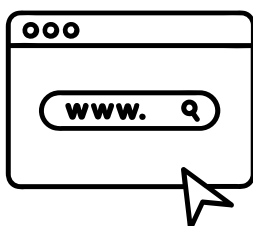
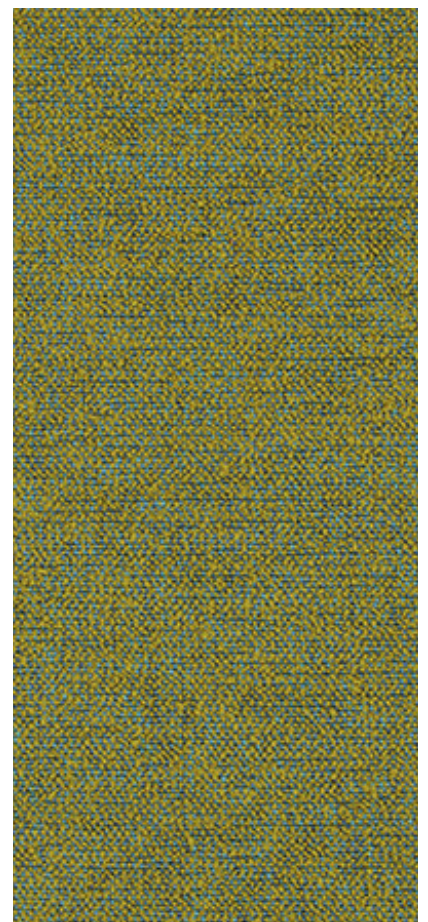
4/5, ISO 12945-2.

sound absorbtion

Cw 0,75 folded;
Cw 0,60 not folded;
ISO 354 - G type.

fire resistance

1IM - UNI 9175;
classe 1 - UNI 9177;
EN 1021 part 1/2;
NF D-60 013 - A18;
DIN 4102 - B1;
NFPA 260 Class 1;
California TB 117:2013;
IMO MED 3.20 - Ftp 307 part 8;
ÖNOM B 3825 - normal brennbar.



<https://www.abitex.eu/en/grisu-fire-retardant-frise-fabric-fabric-grisu-is-produced-with-fire-retardant-yarn/90/prdd.php>

CATEGORY A



Avantgarde

features

68% pvc - 1% polyurethane - 31% cotton.

width

cm \pm 140.

weight

\pm 630 gr/m².

thickness

\pm 1,0 mm.

roll length

approx. 25 lm, can also be cut-to-length at an extra cost.

abrasion resistance

> 50.000 rubs, ISO 5470-2.

fastness to rubbing

dry 4, wet 4, ISO 105 X12.

tensile strength

warp 550 N, weft 435 N, ISO 1241.

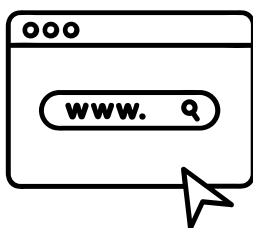
sustainability

phtalete free.

fire resistance

1IM - UNI 9175;
EN 1021 part 1/2;
BS 5852 part 1, is 0 and 1;
BS 5852 crib 5;
California TB 117:2013;
IMO MED - Ftp 307 part 8.

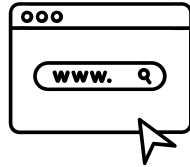
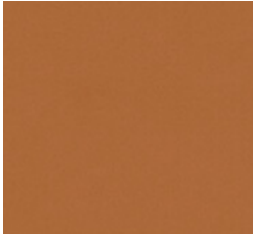
(in some tests the classification is subject to the used foam)



<https://www.abitex.eu/en/avantgarde/56/prdd.php>

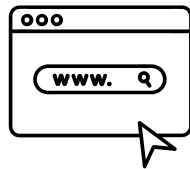
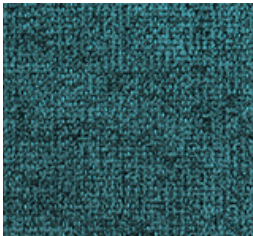
CATEGORY A

Smart Velvet



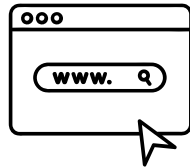
<https://www.abitex.eu/en/smart-velvet/171/prdd.php>

Smart Chenille



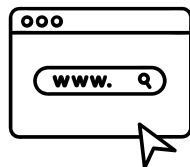
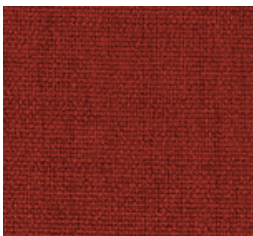
<https://www.abitex.eu/en/smart-chenille/168/prdd.php>

Smart Super Structure



<https://www.abitex.eu/en/smart-super-structure/170/prdd.php>

Smart Linen



<https://www.abitex.eu/en/smart-linen/164/prdd.php>

CATEGORY B



OEKO-TEX®
CONFIDENCE IN TEXTILES
STANDARD 100



Lani

Description

Tough, felted wool quality in modern applicable colours

Composition

80% wool / 20% polyamide

Width

± 140 cm, ± 55 inches

Weight

± 640 gr/m², ± 21 oz/yd²

Flame retardancy

EN 1021/1-2 , Pass

BS 5852 , Crib 5

NF P 92/503-507 or NF D 60-013 , M2

DIN 4102 , B2

UNI 9175 , Classe 1

Cal TB 117-2013, section 1 , Pass

IMO 2010 FTP part 8 , Pass

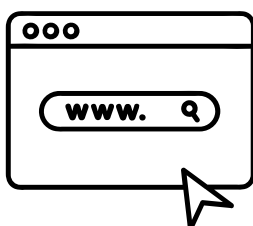
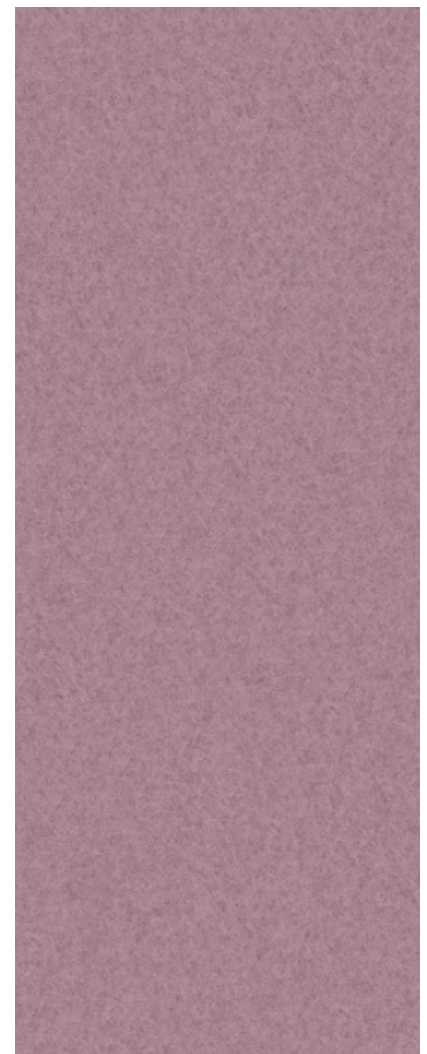
NFPA 260 , Class 1

Abrasion

ISO 12947-2 , >300.000 rubs Martindale

ASTM D3597/D4157 (#10 cotton duck) , 100.000

double rubs Wyzenbeek



<https://vescom.com/en/products/lani>

CATEGORY B



Ponza

Product

Upholstery

Description

Plain velvet upholstery fabric with an extreme soft hand and a natural luster

Composition

100% polyester FR

Width

± 140 cm, ± 55 inches

Weight

± 800 gr/m², ± 26 oz/yd²

Flame retardancy

EN 1021/1-2 , Pass

BS 5852 , Crib 5

NF P 92/503-507 or NF D 60-013 , M1

DIN 4102 , B1

Übereinstimmung , Pass

IMO 2010 FTP part 8 , Pass

Abrasion

ISO 12947-2 , 130.000 rubs Martindale

Pilling

ISO 12945-2

4-5 (scale 1-5)

Colorfastness to crocking

ISO 105 X12

wet 4-5 (scale 1-5) / dry 4-5 (scale 1-5)

Colorfastness to light

ISO 105 B02

4-5 (scale 1-8)

Seam slippage

ISO 13936-2 - warp

2 mm

ISO 13936-2 - weft

2 mm

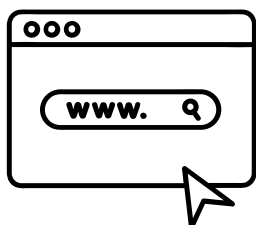
Breaking strength

ISO 13934-1 - warp

860 N

ISO 13934-1 - weft

1000 N



<https://vescom.com/en/products/lani>

CATEGORY B



Sole CS

COMPOSITION

100% Trevira CS

WIDTH

App. 140 cm

WEIGHT

525 g/m² (+/- 5%)

FLAMMABILITY

UNI 9177 - Classe 1
NF P 92-503-507 M1
California TB 117:2013
EN 1021.1&2 (C&M)
BS 5852 Part 0-1 (C&M)
DIN 4102 B1
UNI 9175 Classe 1.IM
NFPA 260
IMO MSC 307(88) Annex 1 Part 7-8
BS 5852-Crib5 (with coating)

ABRASION RESISTANCE

>50000 Martindale cycles (EN ISO 12947-2)

PILLING

4/5 (EN ISO 12945-2)

LIGHT FASTNESS

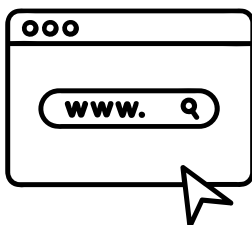
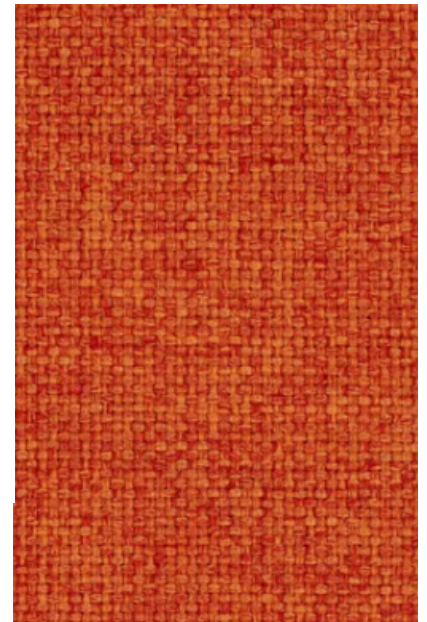
5 (EN ISO 105-B02)

SOUND ABSORPTION

UNI EN ISO 354:2003 α_w : 0,60

FASTNESS TO RUBBING

Wet 4/5; Dry 4/5 (EN ISO 105X12)



<https://onemariosirtori.com/fabrics/sole-cs>

CATEGORY B



California TB 117:2013

Bhaluka 01

COMPOSITION

70% Acrylic
23% Polyester
7% Cotton

WIDTH

App. 140 cm

WEIGHT

790 g/m² (+/- 5%)

FLAMMABILITY

California TB 117:2013
BS 5852 Part 0-1 (C&M)

ABRASION RESISTANCE

>38000 Martindale cycles (EN ISO 12947-2)

PILLING

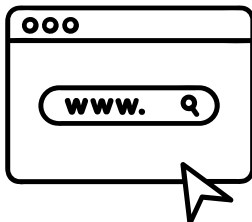
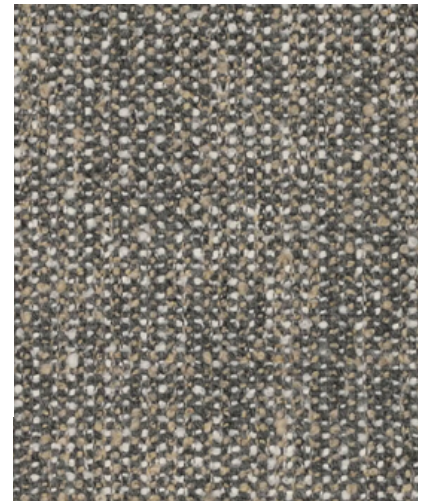
4 (EN ISO 12945-2)

LIGHT FASTNESS

5 (EN ISO 105-B02)

FASTNESS TO RUBBING

Wet 3/4; Dry 5 (EN ISO 105- X12)



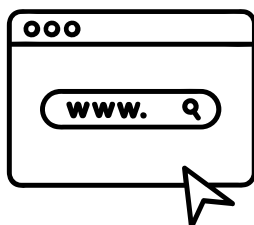
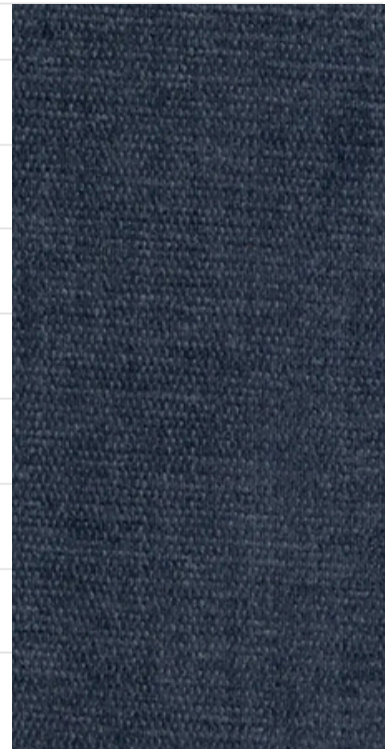
<https://onemariosirtori.com/fabrics/bhaluka-01>

CATEGORY B



Ada

Fabric width	approx. 140 cm
Weight per m ²	approx. 430 g/m ²
Repeat Pattern	no repeat
Composition	100% Polyester FR
Flame retardancy	IMO 2010 FTP Code Part 8, IMO 2010 FTP Code Part 7, M 1, 1 / M, C1, BS 5852 CRIB 5, BS 5867 Typ B, EN 13773, DIN EN 1021-2, DIN EN 1021-1, DIN 4102 / B1 Flammability performance is dependant on the foam used.
Light fastness	note 5
Wash fastness 40°C DIN EN ISO 105-C06	note 4-5
Wash fastness 60°C DIN EN ISO 6330 DIN EN ISO 5077	note 4-5
Wash fastness 72°C DIN EN ISO 6330 DIN EN ISO 5077	note 4-5
Dimensional change Washing 40°C DIN EN ISO 6330 DIN EN ISO 5077	warp approx. +/-1%, weft approx. +/-1%
Dimensional change Washing 60°C DIN EN ISO 6330 DIN EN ISO 5077	warp approx. +/-2%, weft approx. +/-1%
Dimensional change Washing 72°C DIN EN ISO 6330 DIN EN ISO 5077	warp approx. +/-3%, weft approx. +/-2%
Rubbing fastness DIN EN ISO 105-X12	dry: note 4-5, wet: note 4-5
Abrasion to Martindale DIN EN ISO 12947-2 DIN EN 14465-2006	approx. 100000 rubs



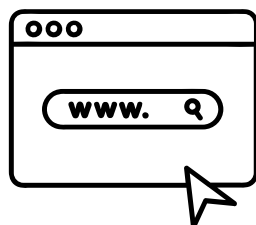
<https://delius.de/en/products/contract-fabrics/ada/>

CATEGORY B



Cosy

Fabric width	approx. 140 cm
Weight per m ²	approx. 500 g/m ²
Repeat Pattern	no repeat
Composition	100% Polyester FR
Flame retardancy	IMO 2010 FTP Code Part 8, 1 / M, BS 5852 CRIB 5, DIN EN 1021-2, DIN EN 1021-1, CAL TB 117, NFPA 260 Flammability performance is dependant on the foam used.
Light fastness	note 6
Wash fastness 40°C DIN EN ISO 105-C06	note 4-5
Wash fastness 60°C DIN EN ISO 6330 DIN EN ISO 5077	note 4
Dimensional change Washing 40°C DIN EN ISO 6330 DIN EN ISO 5077	warp approx. +/-3%, weft approx. +/-1%
Dimensional change Washing 60°C DIN EN ISO 6330 DIN EN ISO 5077	warp approx. +/-4%, weft approx. +/-1%
Rubbing fastness DIN EN ISO 105-X12	dry: note 4, wet: note 4-5
Abrasion to Martindale DIN EN ISO 12947-2 DIN EN 14465-2006	approx. 50000 rubs
Pilling DIN EN ISO 12945-2	Note 4-5 at 2000 rubs



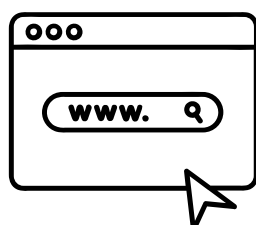
<https://delius.de/en/products/contract-fabrics/cosy/>

CATEGORY B



Harpen

Fabric width	approx. 140 cm
Weight per m ²	approx. 350 g/m ²
Repeat Pattern	no repeat
Composition	100% Polyester FR
Flame retardancy	IMO 2010 FTP Code Part 8, 1 / M, BS 5852 CRIB 5, DIN EN 1021-2, DIN EN 1021-1, CAL TB 117, NFPA 260 Flammability performance is dependant on the foam used.
Light fastness	note 6
Wash fastness 40°C DIN EN ISO 105-C06	note 4-5
Wash fastness 72°C DIN EN ISO 6330 DIN EN ISO 5077	note 3-4
Dimensional change Washing 30°C	warp approx. +/-1%, weft approx. +/-1%
Dimensional change Washing 40°C DIN EN ISO 6330 DIN EN ISO 5077	warp approx. +/-2%, weft approx. +/-1%
Dimensional change Washing 72°C DIN EN ISO 6330 DIN EN ISO 5077	warp approx. +/-4%, weft approx. +/-2%
Rubbing fastness DIN EN ISO 105-X12	dry: note 4-5, wet: note 4-5
Abrasion to Martindale DIN EN ISO 12947-2 DIN EN 14465-2006	approx. 75000 rubs
Pilling DIN EN ISO 12945-2	Note 3-4 at 2000 rubs



<https://delius.de/en/products/contract-fabrics/harper/>

CATEGORY B



Wilson

Product

Upholstery

Description

Plain upholstery fabric made from 100% recycled plastic waste, a matte non-directional structure with a soft touch

Composition

100% recycled polyester FR

Width

± 150 cm, ± 59 inches

Weight

± 771 gr/m², ± 25 oz/yd²

Flame retardancy

EN 1021/1-2 , Pass

BS 5852 , Crib 5

DIN 4102 , B1

Cal TB 117-2013, section 1 , Pass

IMO 2010 FTP part 8 , Pass

NFPA 260 , Class 1

Abrasion

ISO 12947-2 , 80.000 rubs Martindale

ASTM D3597/D4157 (#10 cotton duck) , 100.000 double rubs Wyzenbeek

Pilling

ISO 12945-2

4-5 (scale 1-5)

Colorfastness to crocking

ISO 105 X12

wet 4-5 (scale 1-5) / dry 4-5 (scale 1-5)

Colorfastness to light

ISO 105 B02

6 (scale 1-8)

Seam slippage

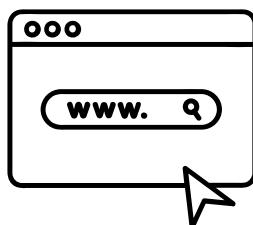
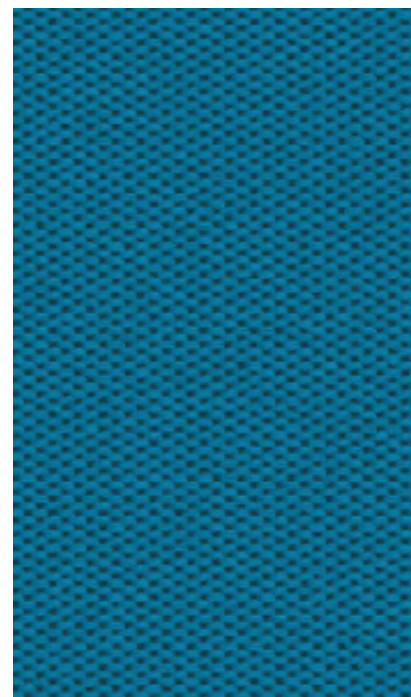
ISO 13936-2

warp 4 mm / weft 2 mm

Breaking strength

ISO 13934-1

warp 1480 N / weft 2500 N



<https://vescom.com/en/products/wilson>

CATEGORY B



OEKO-TEX®
CONFIDENCE IN TEXTILES
STANDARD 100

Crib5™
COMPLIANT

Colour Connect

Product

Upholstery

Description

Plain upholstery fabric in a large colour range

Composition

100% recycled polyester FR

Width

± 150 cm, ± 59 inches

Weight

± 435 gr/m², ± 14 oz/yd²

Flame retardancy

EN 1021/1-2, Pass

BS 5852, Crib 5

DIN 4102, B1

Cal TB 117-2013, section 1, Pass

IMO 2010 FTP part 8, Pass

NFPA 260, Class 1

Abrasion

ISO 12947-2, 60.000 rubs Martindale

ASTM D3597/D4157 (#10 cotton duck), 100.000

double rubs Wyzenbeek

Pilling

ISO 12945-2

4-5 (scale 1-5)

ASTM D3511

5 (scale 1-5)

Colorfastness to crocking

ISO 105 X12

wet 4-5 (scale 1-5) / dry 4-5 (scale 1-5)

AATCC 8

wet 5 (scale 1-5) / dry 5 (scale 1-5)

Colorfastness to light

ISO 105 B02

6 (scale 1-8)

AATCC 16.2 opt.1 or 16.3 opt. 3

5 (scale 1-5)

Seam slippage

ISO 13936-2

warp 3.3 mm / weft 2.3 mm

ASTM D4034

warp 121 lbf / weft 109 lbf

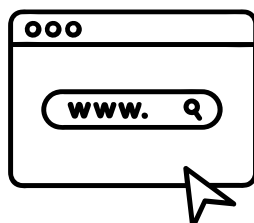
Breaking strength

ISO 13934-1

warp 1350 N / weft 1390 N

ASTM D5034

warp 268 lbf / weft 260 lbf



<https://vescom.com/en/products/colour-connect>

CATEGORY B



Zenith

Product

Upholstery

Description

Two-tonal woven grid upholstery fabric with a random all-over pixelated accent

Composition

100% recycled polyester FR

Width

± 146 cm, ± 58 inches

Weight

± 523 gr/m², ± 17 oz/yd²

Flame retardancy

EN 1021/1-2 , Pass

BS 5852 , Crib 5

NF P 92/503-507 or NF D 60-013 , M1

DIN 4102 , B1

Cal TB 117-2013, section 1 , Pass

IMO 2010 FTP part 8 , Pass

NFPA 260 , Class 1

Abrasion

ISO 12947-2 , 90.000 rubs Martindale

ASTM D3597/D4157 (#10 cotton duck) , 100.000

double rubs Wyzenbeek

Pilling

ISO 12945-2

4 (scale 1-5)

ASTM D3511

5 (scale 1-5)

Colorfastness to crocking

ISO 105 X12

wet 4-5 (scale 1-5) / dry 4-5 (scale 1-5)

AATCC 8

wet 5 (scale 1-5) / dry 5 (scale 1-5)

Colorfastness to light

ISO 105 B02

6 (scale 1-8)

AATCC 16.2 opt.1 or 16.3 opt. 3

5 (scale 1-5)

Seam slippage

ISO 13936-2

warp 4 mm / weft 3 mm

ASTM D4034

warp 139 lbf / weft 106 lbf

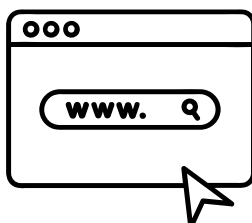
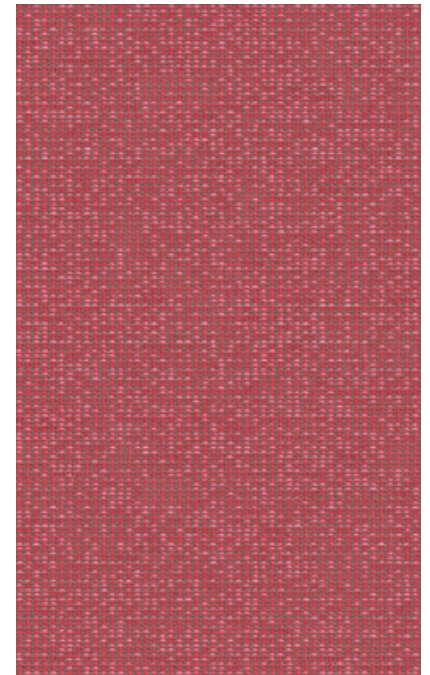
Breaking strength

ISO 13934-1

warp 860 N / weft 2510 N

ASTM D5034

warp 190 lbf / weft 340 lbf



<https://vescom.com/en/products/zenith>

REAL LEATHER

Soft Unito

Leather: BOVINE

Tanning: CHROMO

Dyeing: BARREL ANILINE

Dry rubbing - 500 cycles -- Grey scale > -4
(IUF 450)

Wet rubbing - 250 cycles -- Grey scale > -4
(IUF 450)

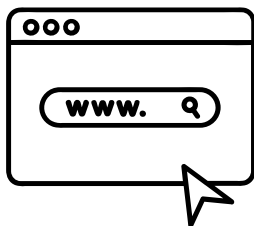
Perspiration - 80 cycles -- Grey scale > -3/4
(IUF 450)

Finish adhesion -- Newton/cm > =2
(IUF 470)

Colour fastness to light -- Blue scale > =5
(IUP 402)

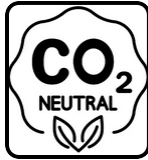
Tear resistance -- Newton > =20
(IUP 40)

Flexing endurance - 50.000 -- No surface damage or cracks > = 20.000



<https://www.tipiesse.eu/soft-unito>

REAL LEATHER



Ocean



European origin



Thickness
0.8–1.0 mm



Average size
52–54 sf

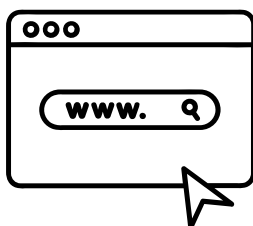


Chrome tanning



Dyed through

Analisi Test	Metodo di prova Test method	Unità di misura Measurement unit	Garantito Guaranteed
Resistenza allo strappo pantalone Tear strength (single edge tear)	UNI EN ISO 3377-1	N	≥ 20
Solidità del colore allo strofinio (secco, 500 cicli) Colour fastness to rubbing (dry, 500 cycles)	UNI EN ISO 11640:1998	Scala dei grigi Grey scale	≥ 4
Solidità del colore allo strofinio (umido, 250 cicli) Colour fastness to rubbing (wet, 250 cycles)	UNI EN ISO 11640:1998	Scala dei grigi Grey scale	≥ 4
Solidità del colore allo strofinio (sudore, 80 cicli) Colour fastness to rubbing (sweat, 80 cycles)	UNI EN ISO 11640:1998 ISO 11641 pH8	Scala dei grigi Grey scale	≥ 4
Resistenza alle flessioni (secco, 50.000 cicli) Flexing endurance (dry, 50.000 cycles)	UNI EN ISO 5402	-	Nessun danno No damage
Adesione della rifinitura (a secco) Finish adhesion (dry)	UNI EN ISO 11644	N/cm	≥ 2
Solidità del colore alla luce artificiale (energia di esp. 16.000 kj/m ²) Color fastness to artificial light (exp. energy 16.000 kj/sqm)	UNI EN ISO 105 B02 (MET. 5)	Scala dei blu Blue scale	≥ 5
Resistenza al fuoco, alla sigaretta e alla piccola fiamma Smolder resistance, cigarette and match flame	CAL TB-117 (2013, Sec 1) BS 5852: 1979, source 0-1 BS EN 1021-1-2:2006	-	Passa Pass



<https://www.mastrotto.com/en/collections/ocean>

NFK international

NYIUSA

1500 Old Country Road - PLAINVIEW, NY 11803

Phone number: 516 802 5346

nfkinternational@nfkinternational.com