



Indexer-25



DESCRIPTION:

The Indexer-25 is a robust, high-visibility line laser module purpose-built for use in the offshore oil and gas industry, where precision and durability are paramount. It provides a bright, stable green line for accurate pipe marking and alignment during downhole and rig-floor operations.

Constructed from **aerospace-grade anodised aluminium**, the housing offers exceptional corrosion resistance and strength in harsh marine environments. Integrated **neodymium magnets** allow secure attachment to metallic surfaces, while a **drop-prevention tether point** ensures safe use when working at heights or around the rotary table.

Powered by a **sub-5 mW 532 nm green laser source**, the Indexer-25 delivers one of the **brightest visible beams available** while maintaining compliance within the **Class 3R safety classification**, ensuring it remains safe for use by rig personnel.

APPLICATION:

Precise measurements against the drill string are often required offshore, and in many cases, simply marking the pipe at rotary level does not provide sufficient accuracy. The process of **indexing the pipe** eliminates measurement variances caused by factors such as rig heave and tide, which is critical during high-precision operations such as landing out or setting downhole tools.

The **Indexer-25** integrates with the rig's existing index line to support this precision process, ensuring accurate and repeatable results.

HIGHLY VISIBLE

Powered by a **custom-developed 532 nm green laser source** and precision laser driver, the Indexer-25 delivers exceptional visibility even in **the brightest offshore daylight conditions**. The vivid green line provides an unambiguous visual reference for alignment and positioning on the rig floor, deck, or derrick.

RED ZONE / NO-GO ZONE SAFETY

Engineered with **crew safety** as a primary consideration, the Indexer-25 can operate **continuously without personnel present** on the rig floor. Once aligned and activated, it can be left **unattended**, projecting a highly visible green reference line onto the **drill string or work area**. This visual guide assists drillers during **overpull operations, landing-out sequences, and jarring procedures**.

DROPS SAFETY

A **dedicated drop-prevention point** is integrated into the housing design, allowing the device to be **securely tethered** when used at heights or around rotating equipment such as the **rotary table**—meeting standard **Drops prevention requirements** for offshore lifting zones.

Indexer-25



ADDITIONAL EXTRAS

Tubular Mounting Bracket:

Enables the Indexer-25 to be securely mounted directly onto the drill string or other tubular components.

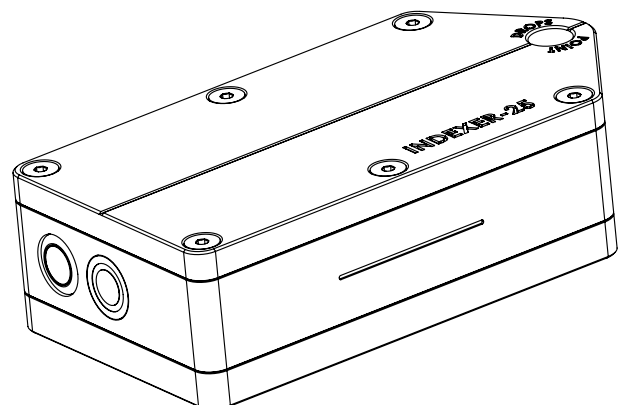
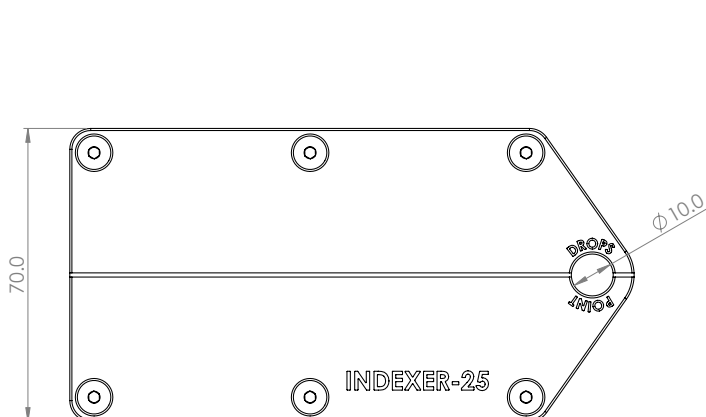
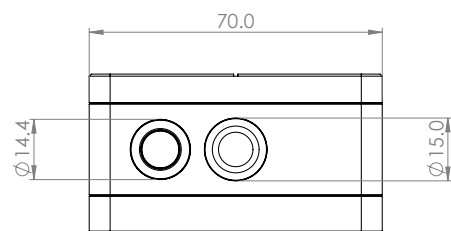
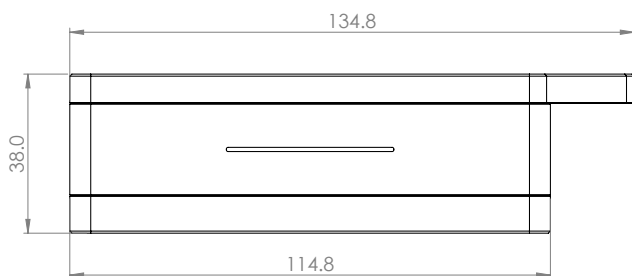
Dot Laser Module:

Ideal for applications requiring long-distance referencing. The standard line laser module can be removed and replaced with a dot laser module to suit specific measurement requirements.

DATA SHEET

LASER INFORMATION

Optical Specifications		Size and dimensions:	
Wavelength (nm)	532	Standard top plate installed: L: 70mm W: 114.8mm D: 38mm	Drops top plate installed: L: 70mm W: 134.8mm D: 38mm
Output Power (mW)	4.5		
Fan Angle (degree)	30		
Beam type	Gaussian		
Power requirements	3 x AA battery		
Technical Standard (pending certification):	IEC 60079 - Explosive Atmospheres		
Quality Standard:	ISO 9001:2015		
Laser source:	DXR532L006		



*Standard housing finish: high-visibility green anodising. Other colours available upon request.